



**STREET CO'**  
DISPLAY SOLUTION EXPERT  
[www.streetcommunication.com](http://www.streetcommunication.com)

# New Generation Ultra-Stable Outdoor Panel

Unlocking Infinite Display Possibilities



**PTA-8000 SERIES**  
Achieve long-term savings



8,000 nits



13,000:1



3,840 Hz

## What is PTA-8000?

outdoor copper wire high brightness solution



Fabulux copper wire leds(8,000nit)



Other copper wire leds(5,000-6,000nits)

## PTA-8000 High brightness solution for copper wires

With remarkable brightness, superior contrast, and distinct visibility in sunlight



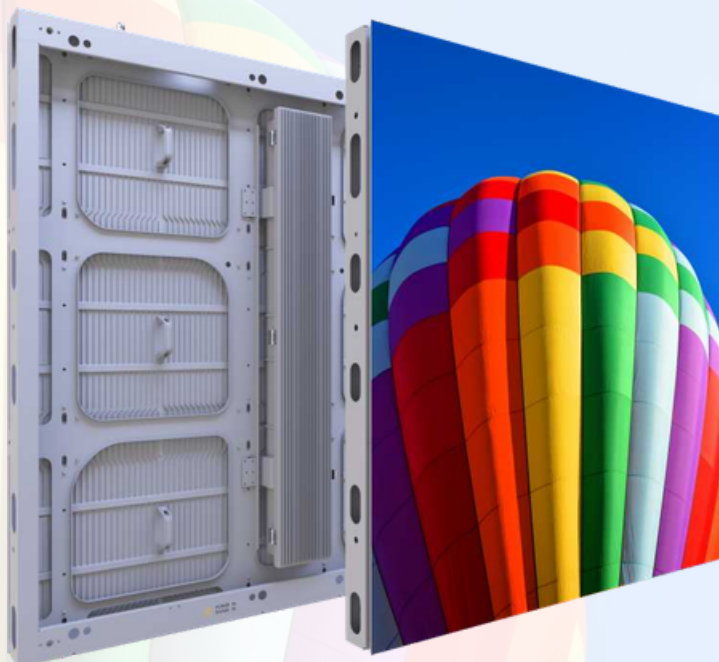
**8,000nits**

High Brightness



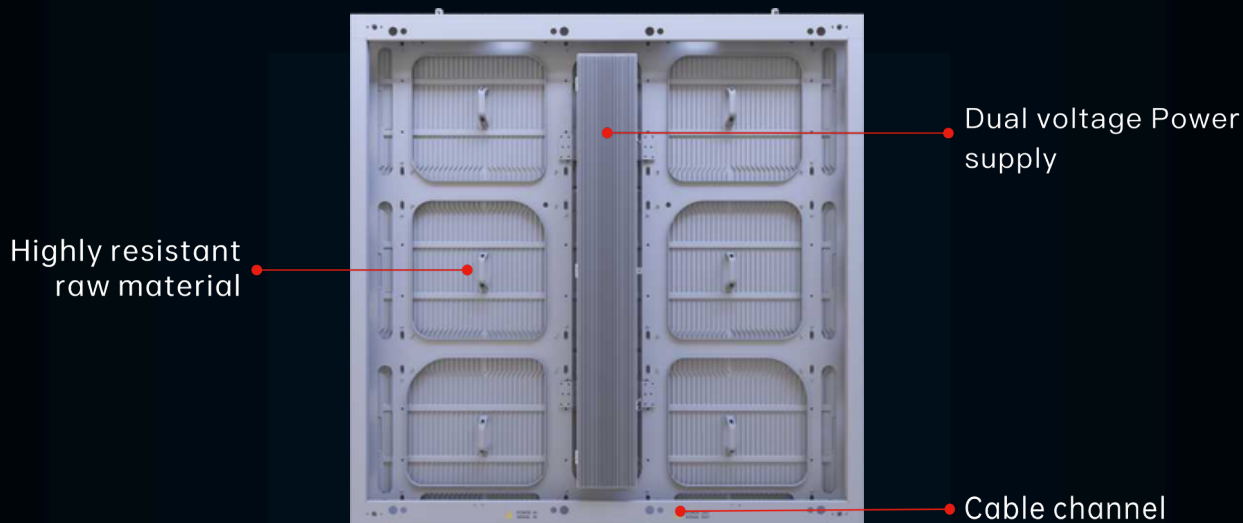
**13,000:1**

High Contrast



# Ultra-stable, as Bright as Platinum

Excellent quality, extraordinary effect



High temperature resistance



Heavy rain resistance



High humidity resistance



Low temperature resistance



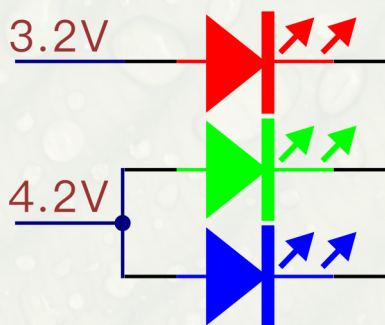
Salt spray proof



Typhoon resistance

## High ROI Screen, Super energy efficiency

Fabulux creates the PCB design and Power supply with separate voltage; the positive pole of Red LED chip is 3.2V; Green and Blue is 4.2V. It helps saving 30% power consumption at least, compared with the traditional 5V for Red, Green and Blue LEDs.



## High protection

Waterproof and fireproof significantly enhances its usability and safety.

**IP66** waterproof, **30** minutes test for **900**mm water



**5VB** fireproof, sturdy material provides dependable protection from potential fire hazards

## Easy Installation and Convenient Upgrade



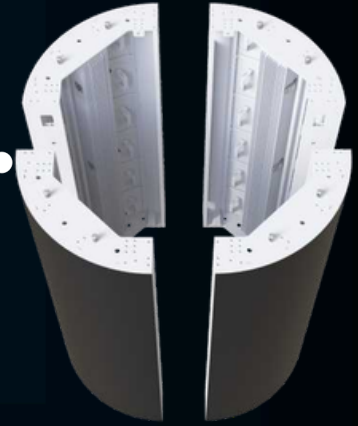
Module with 4 screws, stable and easy to remove, save repairing costs

Compatible design, upgrade only requires replacing the module



# Creative design, creat more dreams

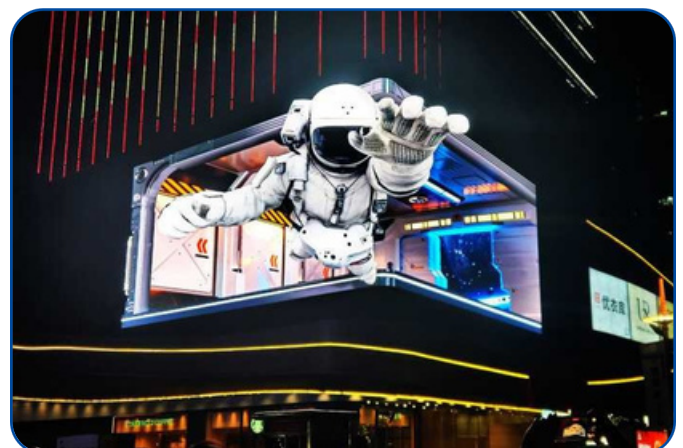
Immersive screen, Build falous visual world



VR corner

Customized corner solution, deep immersion experience

## Application



# Specifications

| Model Name                                    | PTA-8000 P5.7   | PTA-8000 P6.6         | PTA-8000 P8           | PTA-8000 P10 |
|---|---|-----------------------|-----------------------|--------------|
| Pixel Pitch (mm)                              | 5.71  | 6.67                  | 8                     | 10           |
| Pixel Density (dot/m <sup>2</sup> )           | 30,625  | 22,500                | 15,625                | 10,000       |
| LED Sealing Type                              | SMD 2727  | SMD 2727              | SMD 2727              | SMD 2727     |
| Module Resolution (PX)                        | 84 x 56   | 72 x 48               | 60 x 40               | 48 x 32      |
| Module Size (mm)                              | 480 x 320   | 480 x 320             | 480 x 320             | 480 x 320    |
| Module Weight (kg)                            | 1.9   | 1.9                   | 1.9                   | 1.9          |
| Module Thickness (mm)                         | 18  | 19                    | 20                    | 22           |
| Horizontal Viewing Angle (Deg)                | 160°  |                       |                       |              |
| Vertical Viewing Angle (Deg)                  | Upward 15° / Down 45°   | Upward 25° / Down 50° | Upward 15° / Down 50° |              |
| Brightness (cd/m <sup>2</sup> )               | 8,000   |                       |                       |              |
| Max Power Consumption (W/m <sup>2</sup> )     | 530 ± 5%  |                       |                       |              |
| Average Power Consumption (W/m <sup>2</sup> ) | 159   |                       |                       |              |
| Grey Scale (bit)                              | 14  |                       |                       |              |
| Refresh Rate (Hz)                             | 7,680   |                       |                       |              |
| Cabinet Size (mm)                             | 960 x 640 / 960 x 960 / 960 x 1,280 / 1,440 x 640 / 1,440 x 960 |                       |                       |              |
| Cabinet Thickness (mm)                        | 72  | 73                    | 74                    | 76           |
| Cabinet Weight (Kg/m <sup>2</sup> )           | 26  | 26                    | 26                    | 26           |
| Input Voltage (V)                             | AC 200 - 240 V  |                       |                       |              |
| Working Temperature (°C)                      | - 30 ~ + 55°C   |                       |                       |              |
| Working Humidity (RH)                         | 10% ~ 95% RH  |                       |                       |              |
| Storage Humidity (RH)                         | 10% ~ 60% RH  |                       |                       |              |
| Storage Temperature (°C)                      | - 40 ~ + 60°C   |                       |                       |              |
| Maintenance Type                              | Rear  |                       |                       |              |
| Working Environment                           | Outdoor   |                       |                       |              |
| Life Span                                     | > 100,000 hours   |                       |                       |              |
| Controlling System                            | Synchronous / Asynchronous                                      |                       |                       |              |
| Ingress Protection                            | IP68/IP66   |                       |                       |              |



**STREET CO**  
**DISPLAY SOLUTION EXPERT**

[www.streetcommunication.com](http://www.streetcommunication.com)