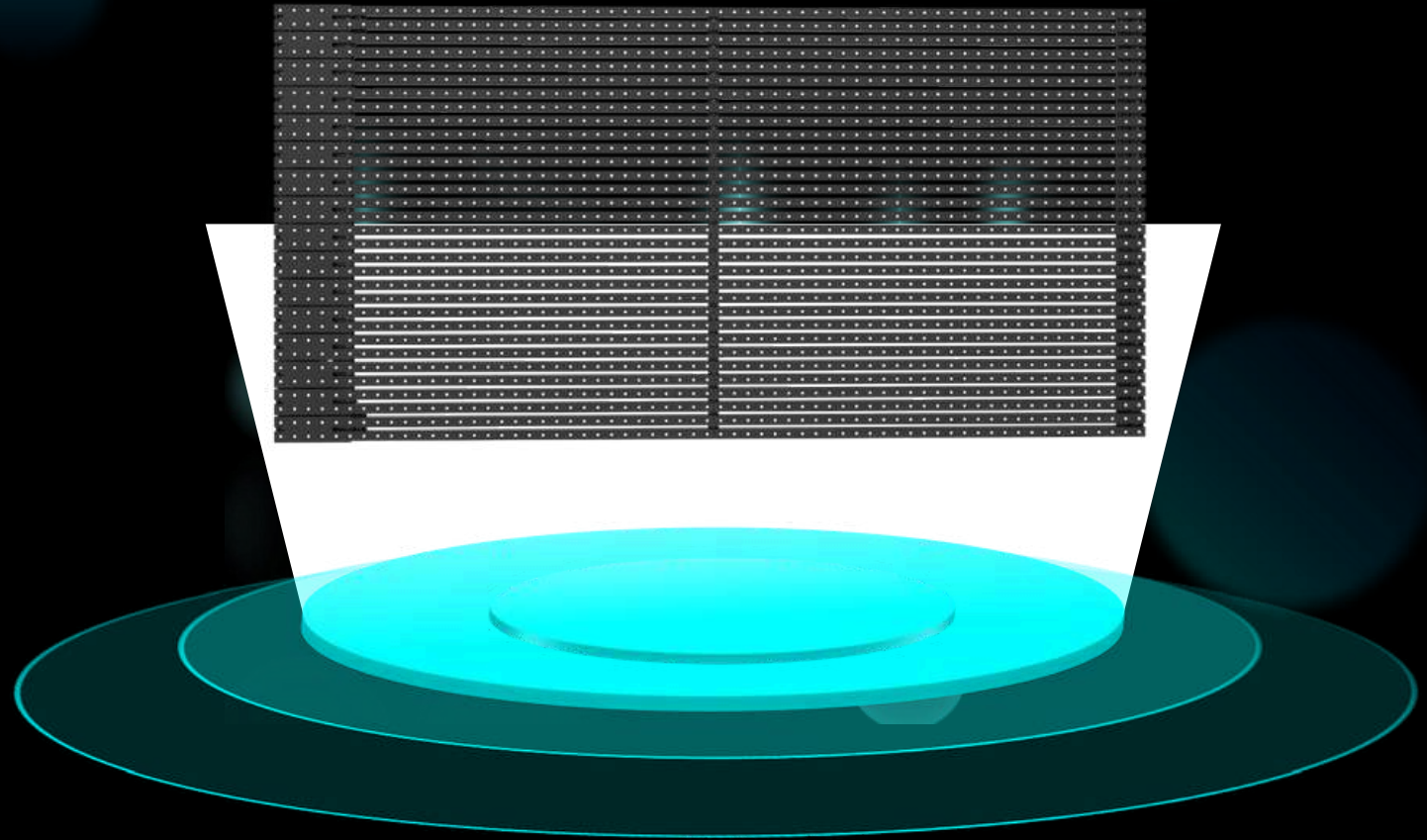




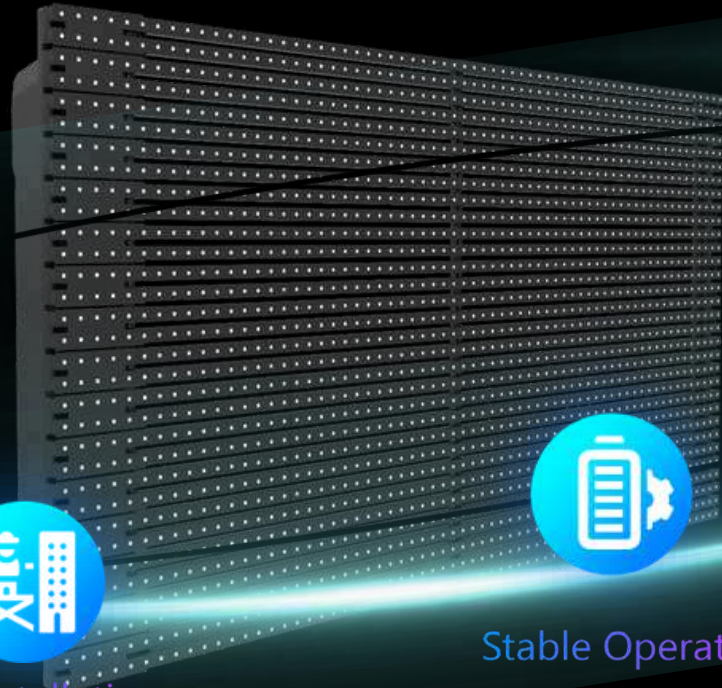
STREET CO'
DISPLAY SOLUTION EXPERT

F series Grille Screen

Outdoor Giant
Landmark Display



The Ultimate Solution for Urban Outdoor Landmark Displays



High-Transparency Energy-Efficient

- ☐ Max reach 8000nits
High Transparency & Ultra-Low Wind Resistance
- ☐ Energy-Saving Design for
- ☐ Low-Cost Operation



Easy Installation

- ☐ Light weight design & optional for non-steel structure mounting
- ☐ Front or Rear Installation
- ☐ Front & Rear maintenance
- ☐ Creative Installations (Curved, Irregular Shapes)



Stable Operation

- ☐ Self-Cooling Technology & No AC Required
- ☐ IP67
- ☐ All-Weather Reliability | Harsh Environment Resistant



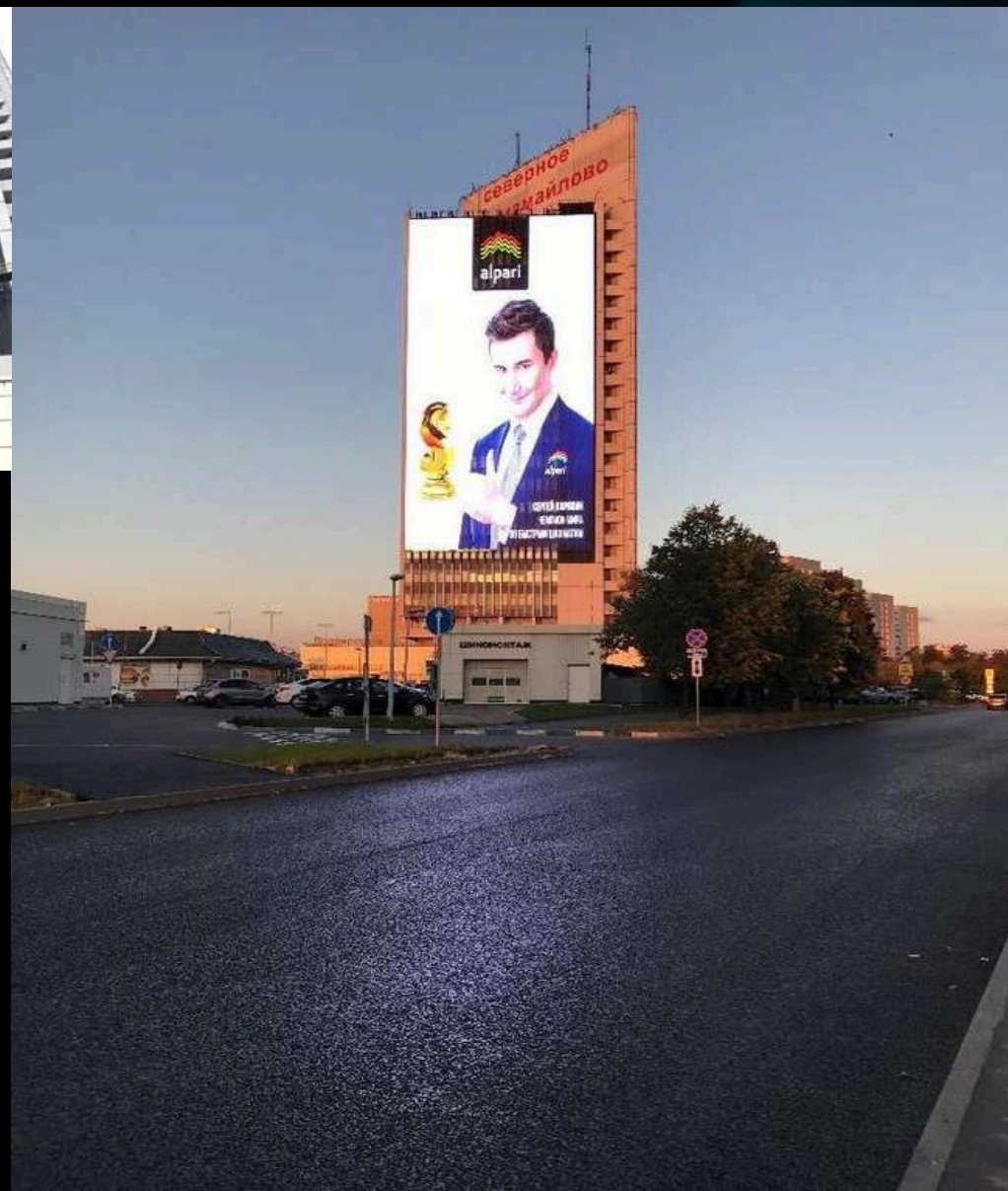
Comprehensive Post-Purchase Support

- ☐ Trusted Brand with global success cases
- ☐ Worldwide Service Network & localized support in selected regions

Application Scenarios



Building Facade



Application Scenarios



Creative Ceiling

Application Scenarios

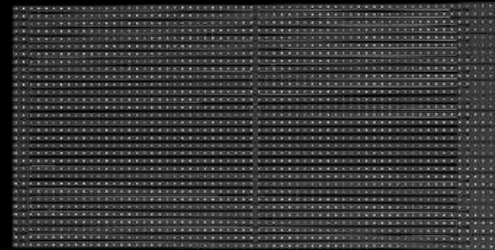


Billboard screen

The Premier Solution for Crafting Urban Outdoor Landmarks



VS



Traditional Sheet Metal cabinet
30-35kg/m²

F-Series Grille Display
≤17kg/m²

50%
Lighter

62%
Transparency

Advantages

Save
40%
Electricity

Not necessary
for a Steel
structure

8000nits

Outstanding visual performance



Max reach 8000nits

Adaptable to Diverse Outdoor Application Scenarios



3840Hz ensures stutter-free dynamic visuals playback



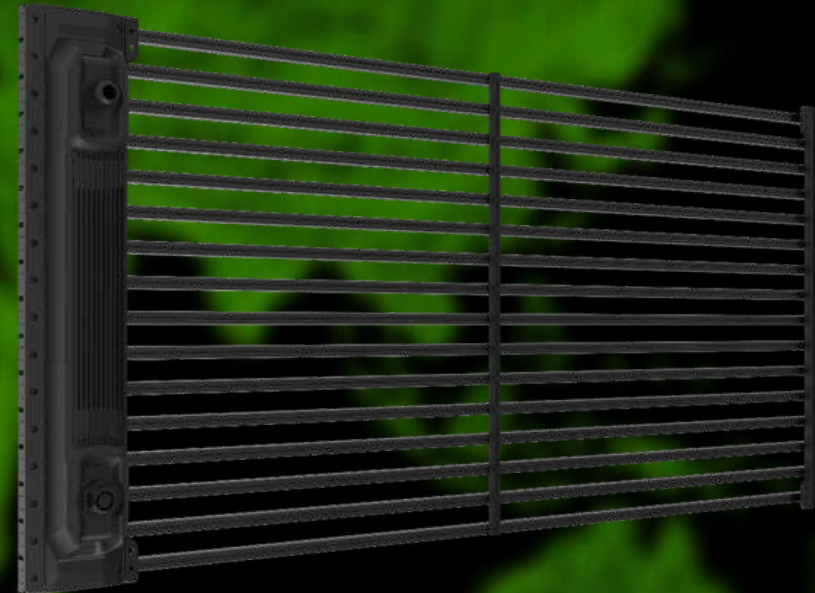
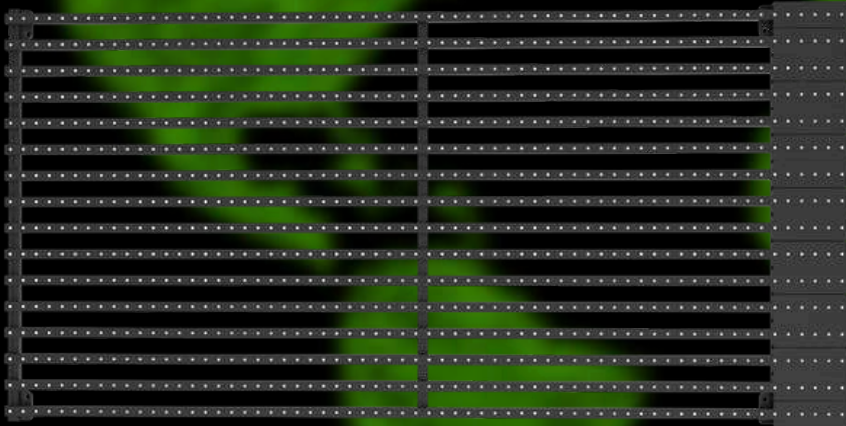
16-bit grayscale enables smoother color transitions



Low-Carbon Energy Efficiency

• **Max power consumption $\leq 500\text{w/m}^2$ at 5000nit**

- Low Operational Costs & Energy Efficiency—**At the same brightness level**, F-Series products **save 17% energy** compared to conventional SMD LED solutions, aligning with low-carbon city development principles



62% Ultra high transparency

IP67 Ultra-High Protection Rating

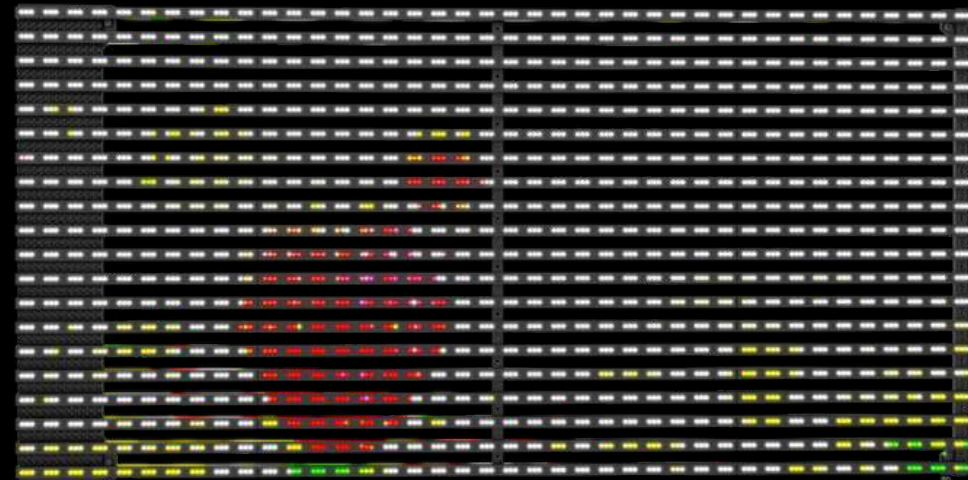
The F-Series achieves an **IP67 protection rate**, fully suited for outdoor use environments. Withstanding heavy rainstorms and harsh weather conditions.

Its ultra-high protection grade ensures stable operation and maximizes content delivery efficiency.

**Dust
Proof**

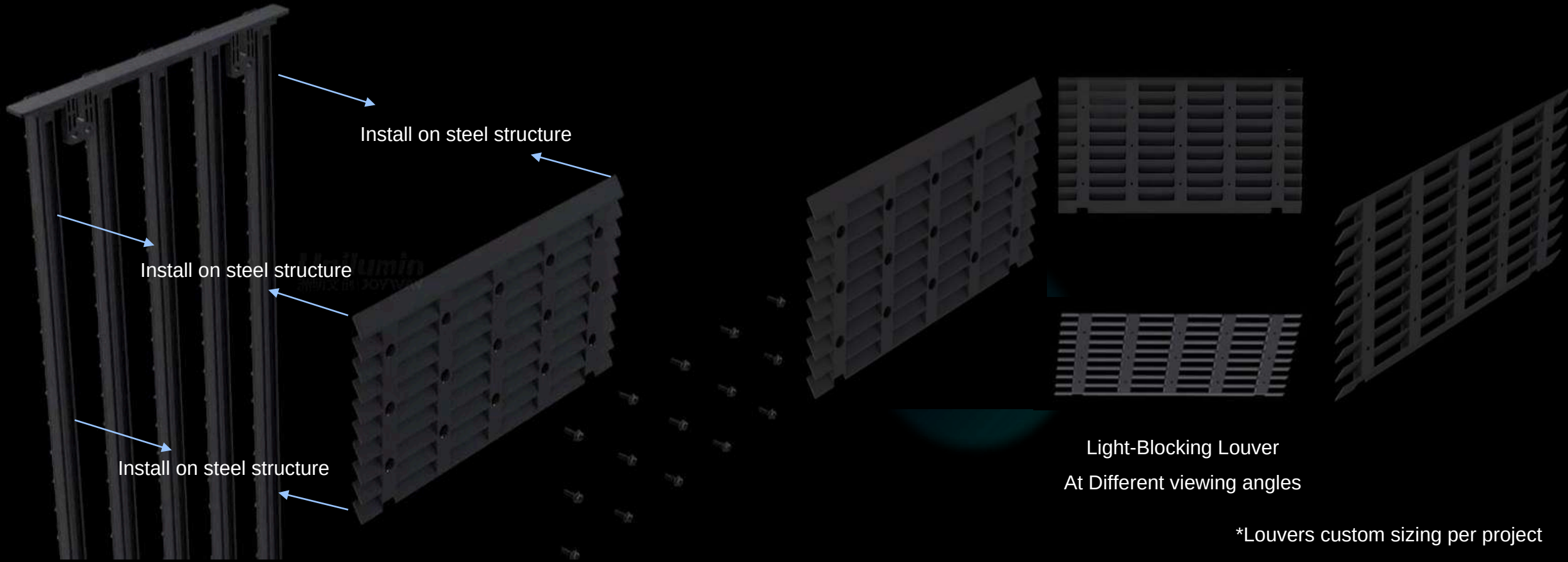


**Water
Proof**



Customized Ventilation-Optimized Light-Blocking Louver Light Barrier

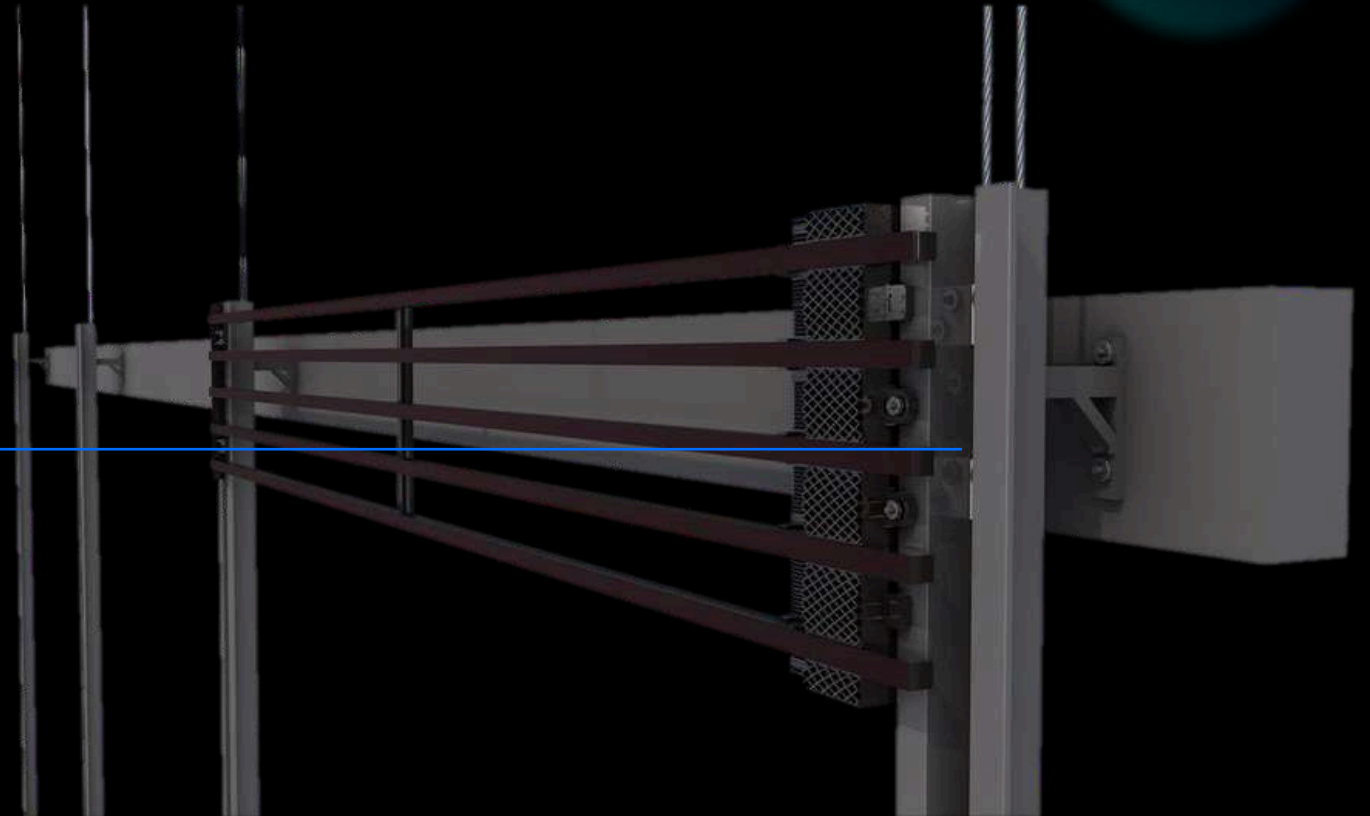
- **High-transparency openwork and self-cooling design** with customizable light transmittance (23%-62%), without affecting the original daylighting of the glass.
- For rooftop applications, **optional shading louvers** are available to ensure high-contrast, high-quality visuals even when installed on shaded sides.



Quick Installation option: without a steel structure

F-Series products secure with matching U-channels and support creative installations including [concave/convex arcs](#).

- [Option for non-steel structure installation](#)
- Overall installation thickness (including structure) ≤ 20 cm



Parameters

Model	F-1531B
Pixel pitch:Inside the light blade / Between light blades	15.625 mm / 31.25mm
Direction of the light blade	Horizontal or Vertical
Diode Type	SMD
Pixel density	2048 dot/sqm
Panel resolution	64 x 16 dot, Total 1024 dot (H) 16 x 64 dot, Total 1024 dot (V)
Panel Size	1000 x 500 x 138 mm (H) 500 x 1000 x 138 mm (V)
Transparency	62%
Weight	7.5 Kg (15.0 Kg/sqm)
Installation	Front or Rear installation
Maintenance	Front or Rear maintenance
Material	Aluminum profiles & PC mask (Customized colors are available)
Brightness	5000 nit
Gray scale	16 bit
Viewing Angle (Horizontal / Vertical)	110°/110°
Refresh Rate	3840 Hz
Video Frame Rate	≥60 Hz
Input Power <Max>	500 W/sqm
Input Power <Typical>	170 W/sqm
IP rating	IP67
Operating Temperature/Humidity	Temperature: -30°C to 60°C; Humidity: 10% -90%



Thank you!

Together, for a brighter future