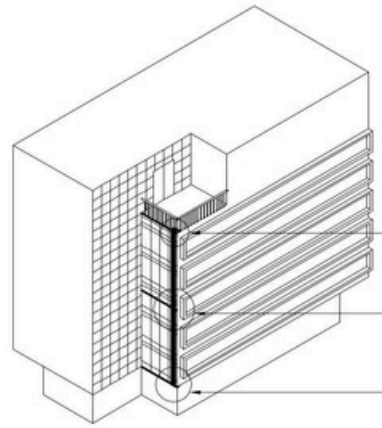
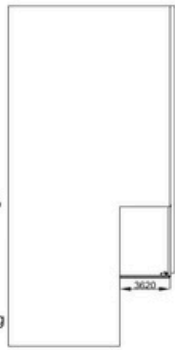
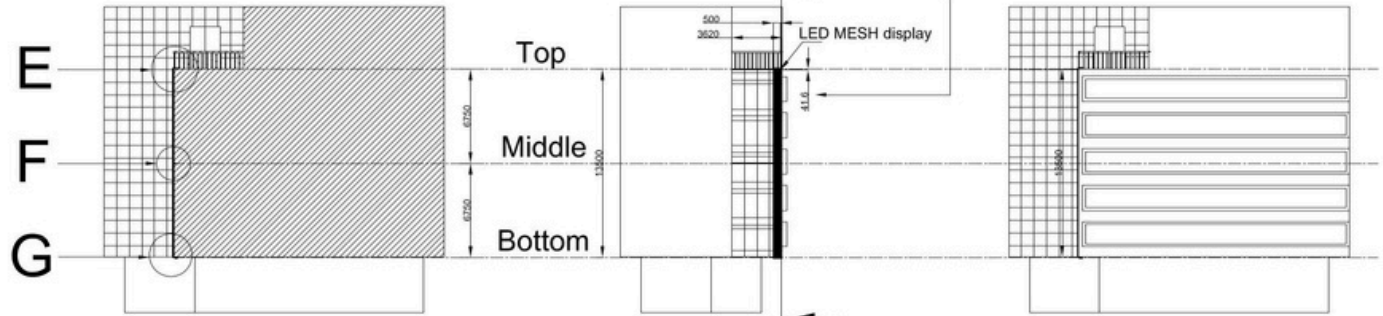


Our products are quick and easy to install. You only need to follow three steps to complete the installation

- Step 1: Weld or fasten the angle iron brackets to the designated areas of the building
- Step 2: Install the mesh display onto the bracket to complete the installation
- Step 3: Connect all the lines and debug the effect

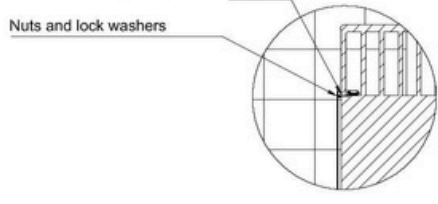


A
B
C

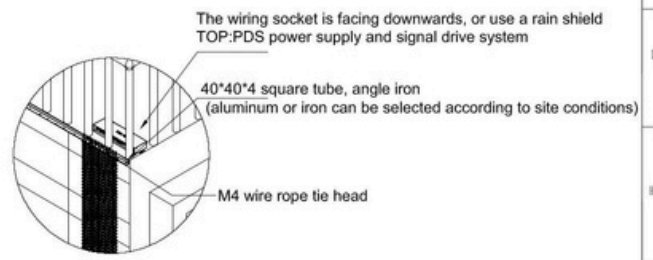


A The pixel spacing changes according to the needs of the project, such as P25 P31.25 P41.6.....and P71.42.....

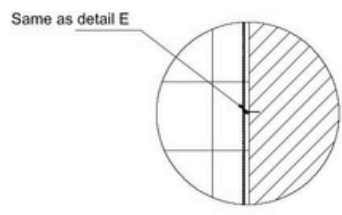
Use M8 and above bolts to fix according to the load-bearing capacity



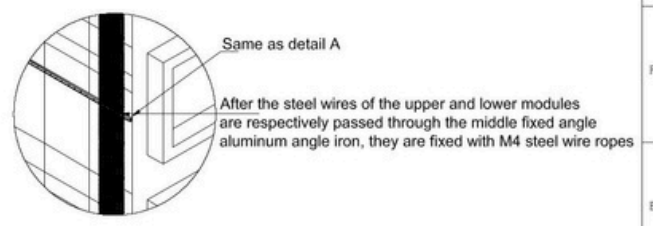
Detail view E



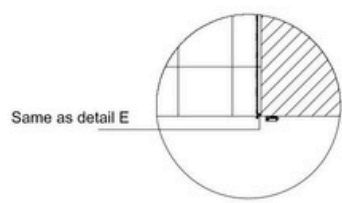
Detail view A



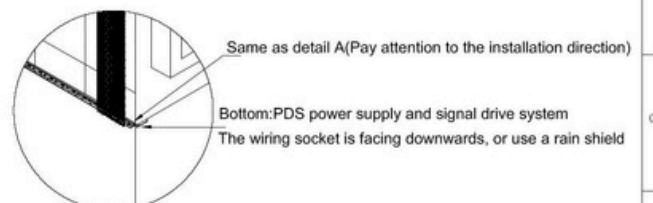
Detail view F



Detail view B



Detail view G



Detail view C

- Special Tips:**
- If it's blurry, you can check the 3D perspective, zoom in and see the details
 - This installation structure diagram is applicable to other projects, just change the size of the grille display screen and the angle iron size, In areas with strong winds, angle irons need to be replaced with galvanized square tubes (the thickness determines the load-bearing capacity)
 - Areas prone to geological disasters need to be notified in advance and the installation plan needs to be changed

		Date of first drawing	2025-10-28	STREET CO' DISPLAY SOLUTION EXPERT		<small>All rights reserved, can't be reproduced and copied without permission, violators will be prosecuted</small>					
Third perspective		VERSION	A/0	Materials		Name		Mesh 16 Installation Diagram			
		First drawing	Kelevin Yin	Hardness		Drawing number		Draw By		Approved By	EXAMINED BY
VERSION		DATE	Revised content	Finishing		Part number					
						SCALE 1:1					
						Unit mm					