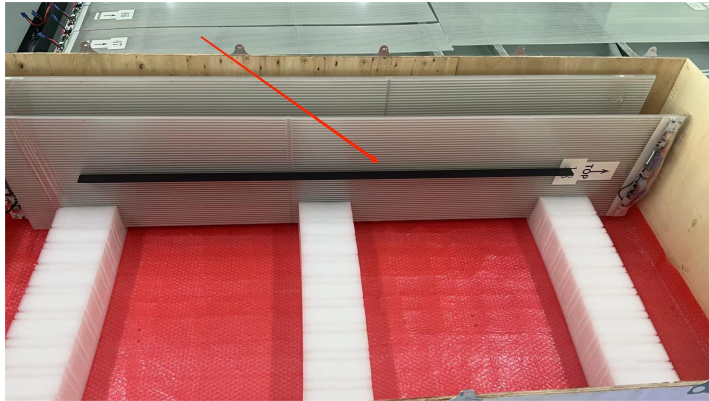


## Skyline film LED screen User manual

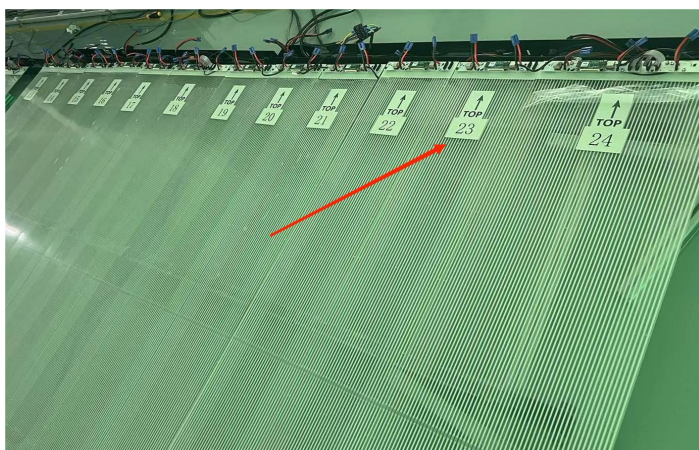
### Notice:

For long panels, each panel has a protection beam behind of panels, you can only take it out from panels after installed.



1, Clear glass firstly with alcohol or glass cleaner, especially new installation glass, must clear with alcohol to clear the oil on glass to paste on well.

2, Location the panels layout, and check the panels number according to drawing provided. (Front view normally)



**3, Test each panels with test button on HUB to avoid issues with leds or hub before install.**

**4, Then tear off the front protection film of glue-water stripes,each panel may have 2-3 strips on.**

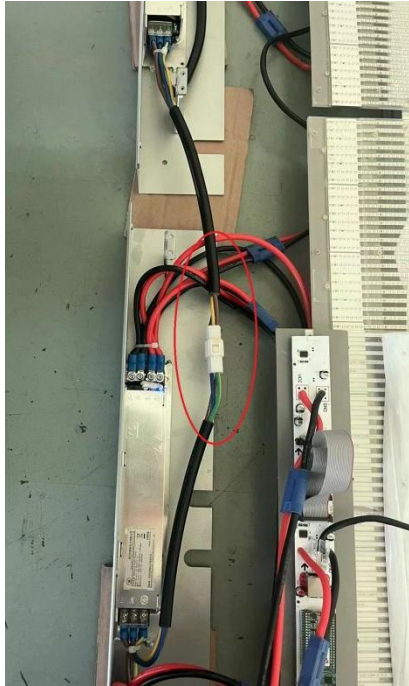


**5, Paste on window glass according to the layout of installation drawing label and fix LED film panels frame on door frame with screws. (Notice: Each project not same power box)**

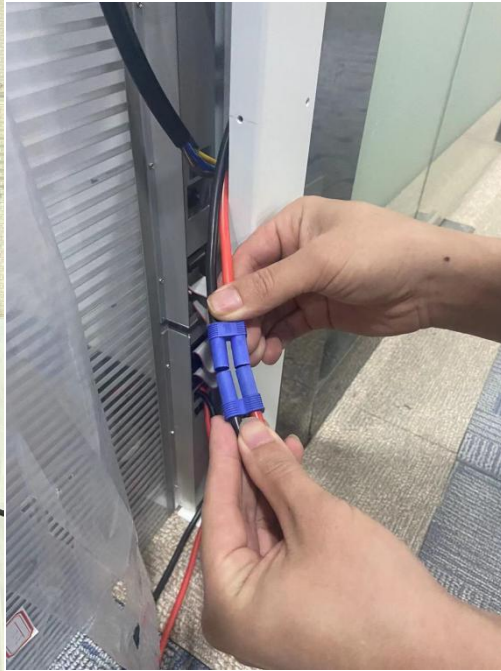


**6, Connect signal & power cables between LED film panel and controller box. (Follow to drawing)**

6.1 PSU connection



6.2 PSU to LED film connection



6.3 LED film signal cables connection, signal input from top.



**7, Connect LED film panel connection plates.**



**8, Power on all panels to check, if all work well, fix the cover of power box. (Each project may differ)**

