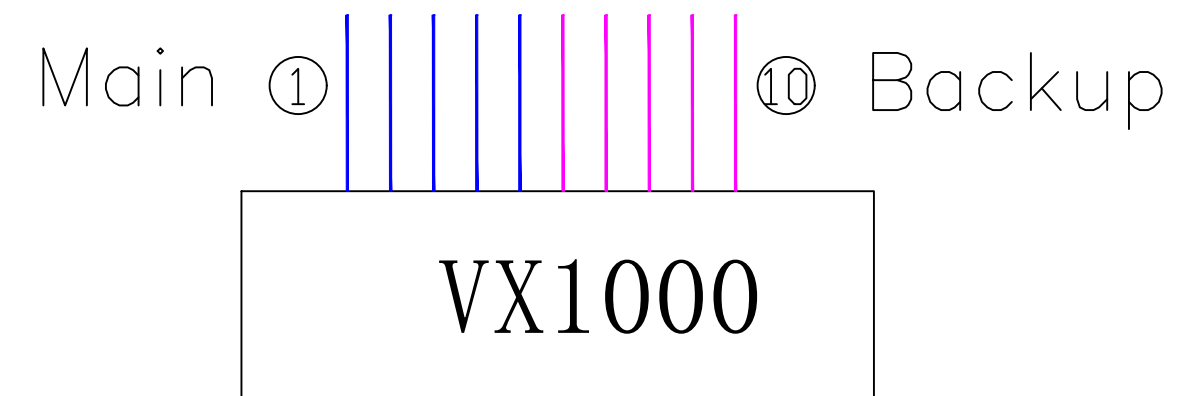
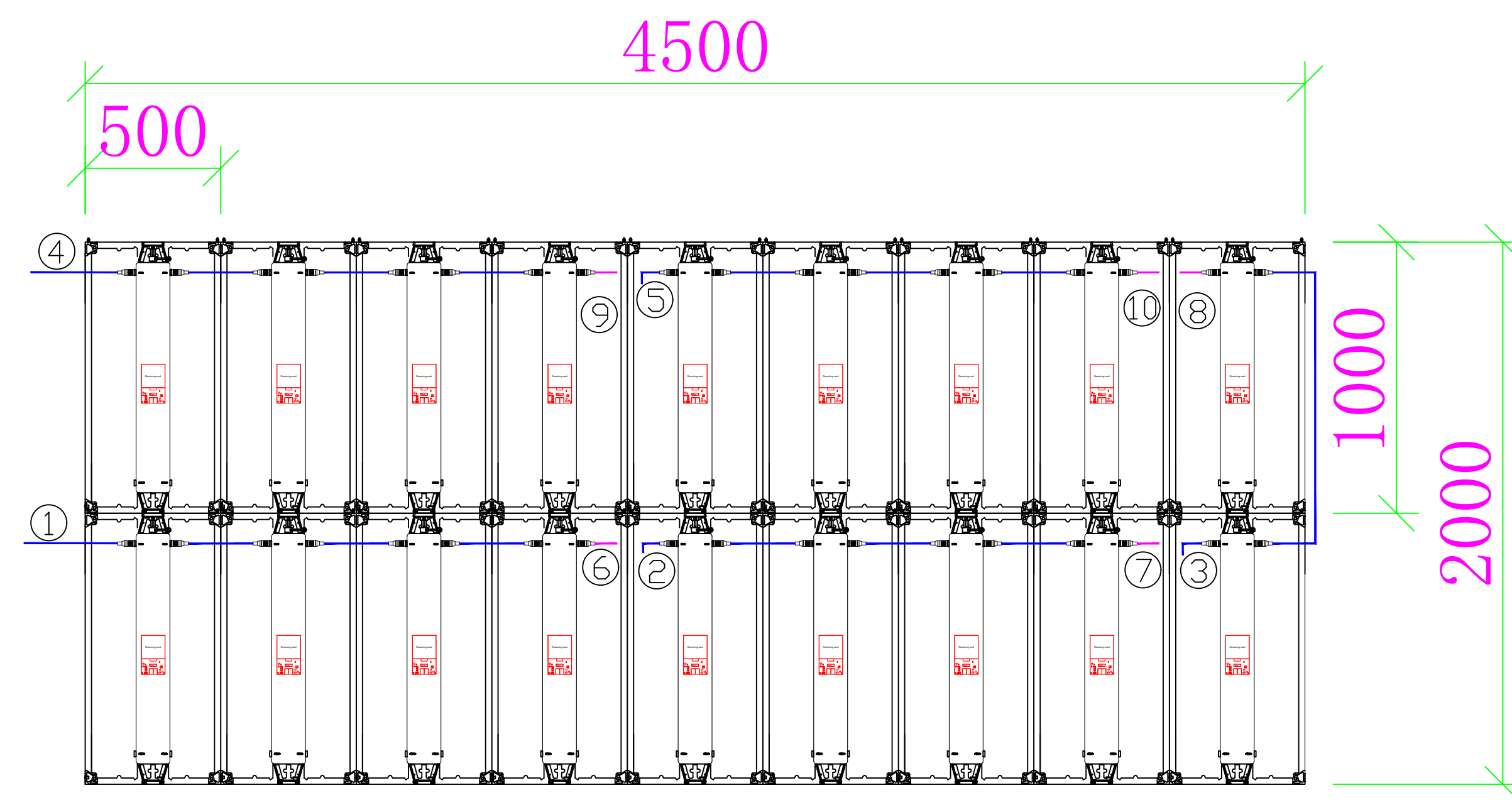


reference

Display Size:4.5*2m Kslim II 1.9
Display Resolution:2304*1024 pixels



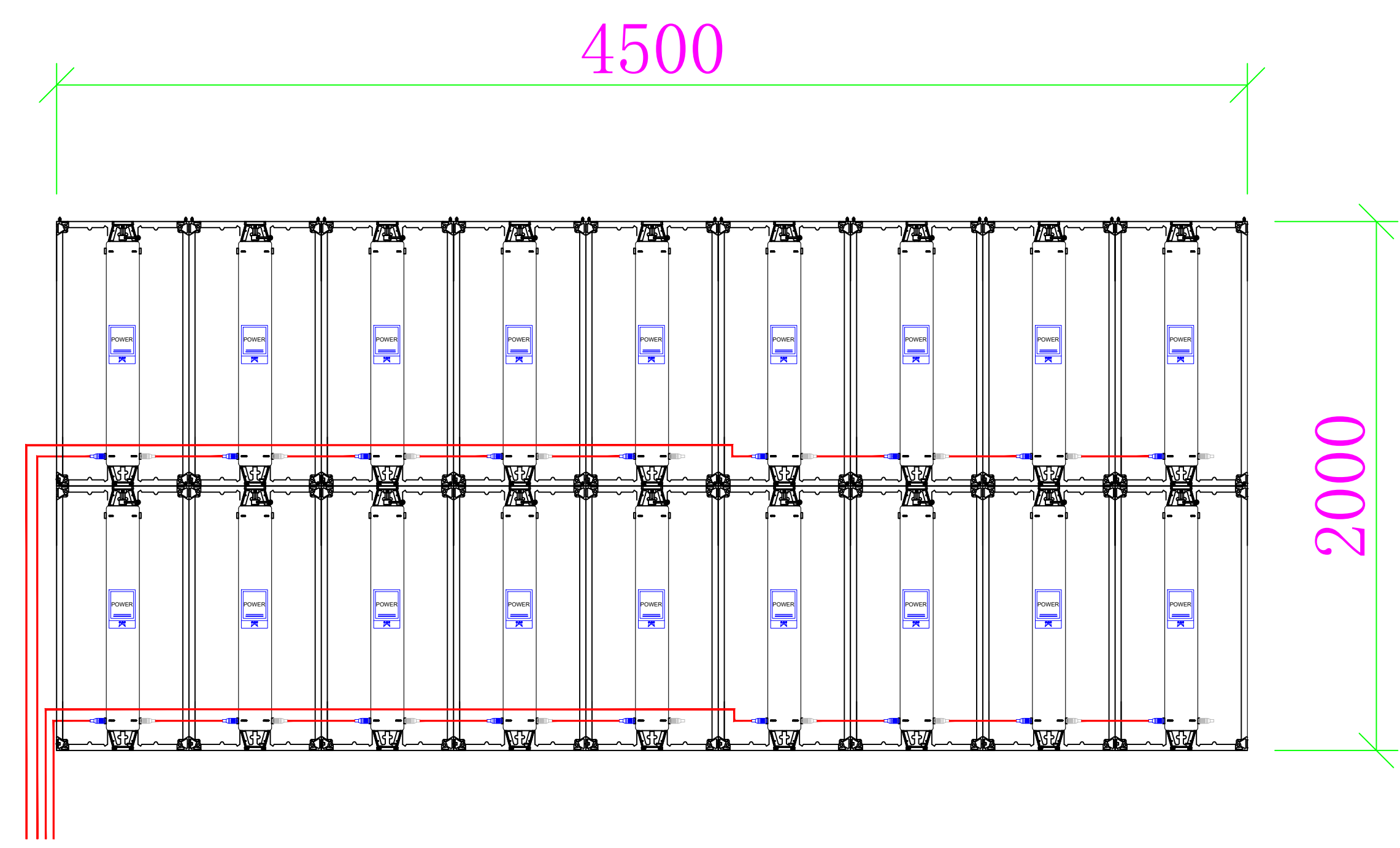
Explanation: (1)  The net cable: cat5e cable.

(2) The weight of a single box is 10KG, and the weight of the whole screen is 180KG

VER:00

Signal connection diagram(Back view)

reference



4PCS 110V 1.5mm² AC CABLE

Explanation: (1)  The AC power cable is 1X(3X1.5mm²) copper cable.

(2) The max power consumption of cabinet is about 0.48KW/SQM.

VER:00	AC power connection diagram(Back view)
--------	--