

GN SERIES

Space Creates Possibility



Display a better world for all



Catalogue

1. Product Overview

2. Scope of Application

3. Product Features



- 3.1 Appearance
- 3.2 Performance
- 3.3 Structure

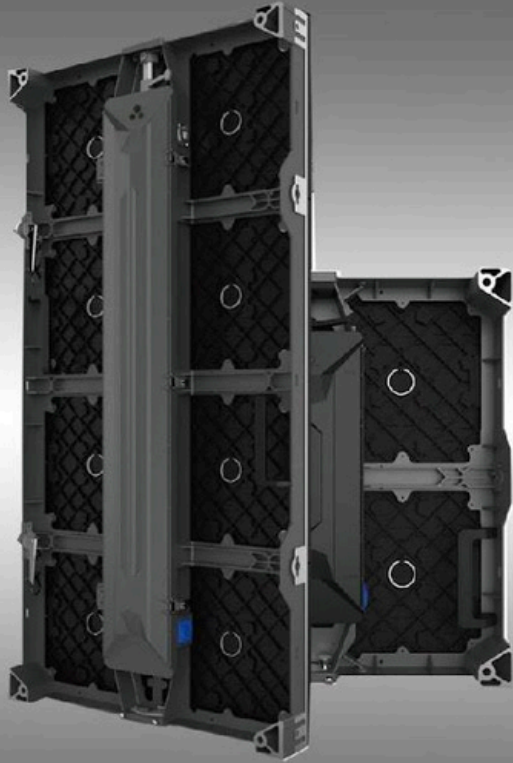
4. Product Specification



PART 1

Products Overview

DISPLAY A BETTER **WORLD** FOR ALL



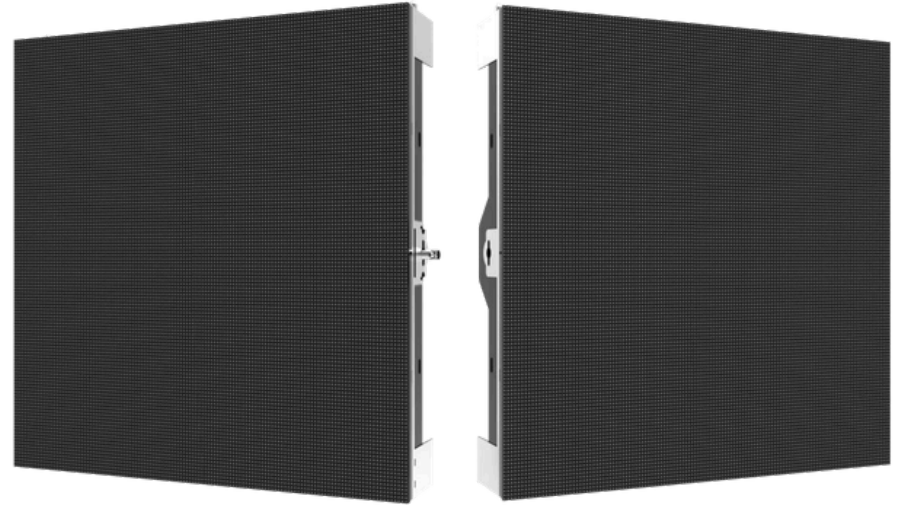
1. Products Overview

GN Series 1.9/2.6/2.8/3.1/3.9/4.8/5.9

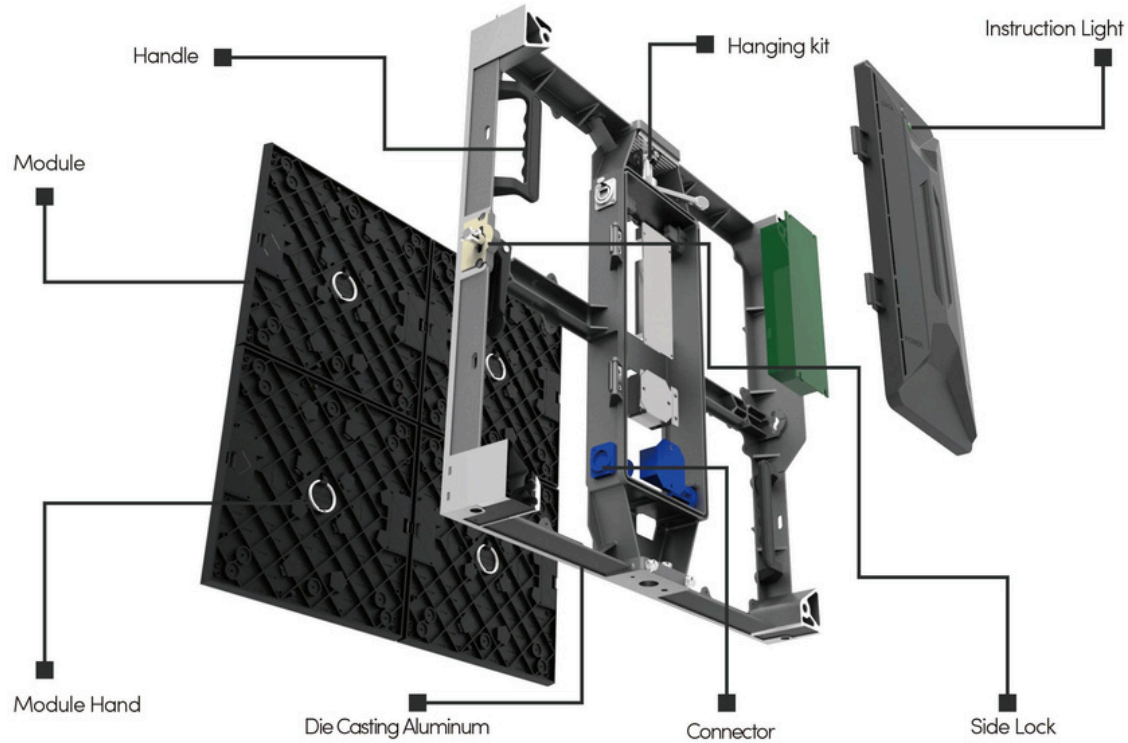
- Ultra HD LED Display
- Full Front Serviced
- Two Cabinets Size Options(500x500mm/ 500x1000mm)
(GN1.9 only support 500x500mm)
- Front Installation
- Unified Modules(250x250mm)
- Aluminum Cabinet

New Product GN1.9

- Smaller Pixel Pitch
- Higher Pixel Density
- Better visual effect



Product detailed vision



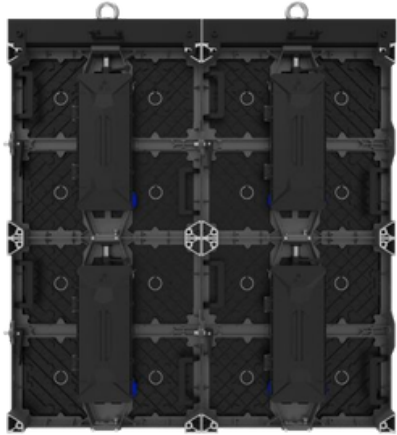


PART 2

Scope of Application

DISPLAY A BETTER **WORLD** FOR ALL

Typical and special solutions, Widely application



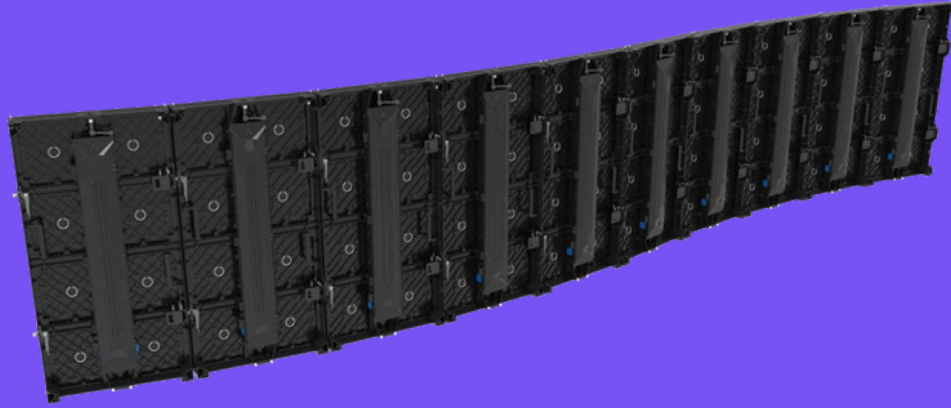
Hanging

Lighter weight and better thickness control of our cabinet with fast locks makes hanging more efficiently

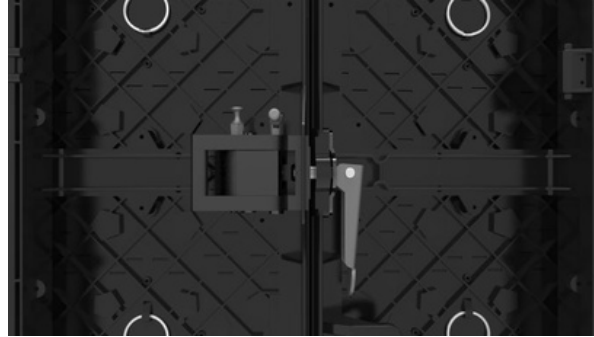
Stacking

Rigid and strong stacking frame , ensure the stability of product installation





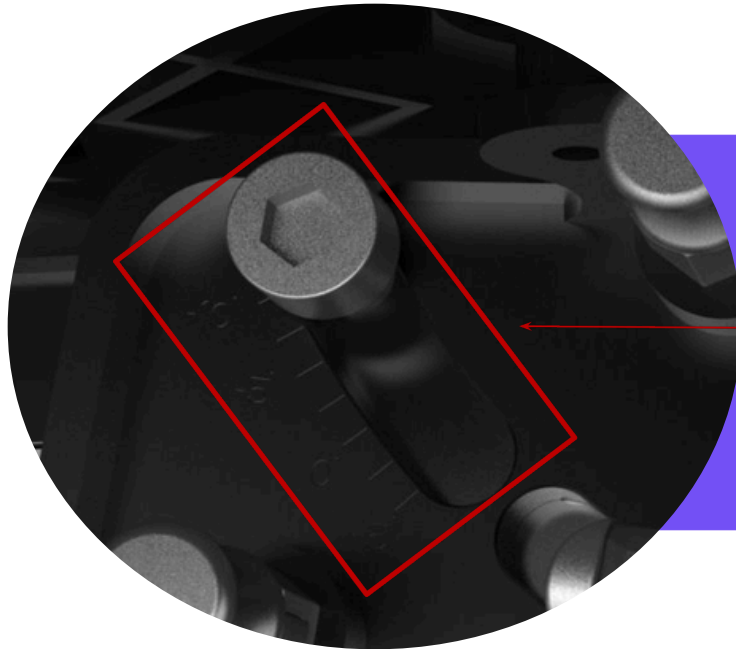
-5°-+10°

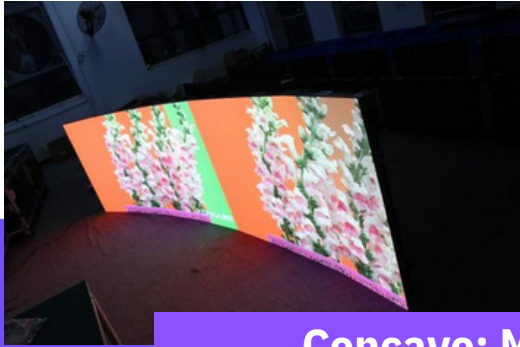


Curve

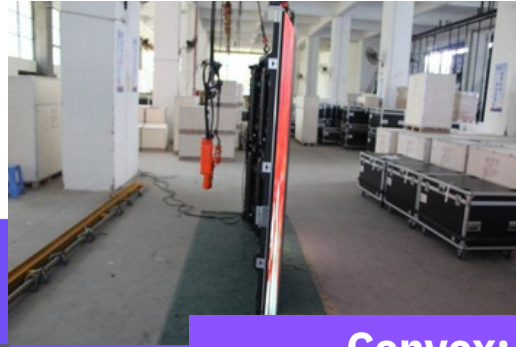
Curve cabinet unique design .Testing the product of mosaic technology, Display extraordinary LED effect and visual perception.

Accurate Adjustment





Concave: Max 10°



Convex: Max 5°





Corner-customized solution

Perfect solution to the column of LED display,
multi-dimension exhibition takes more attention
and benefit of the advertisement



PART 3

Product Features

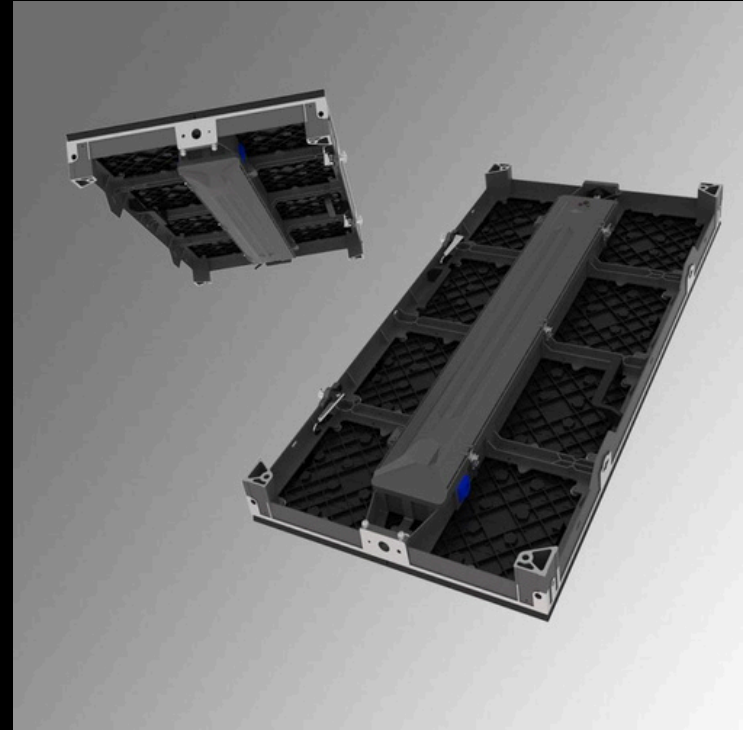
DISPLAY A BETTER **WORLD** FOR ALL

3.1·Appearance

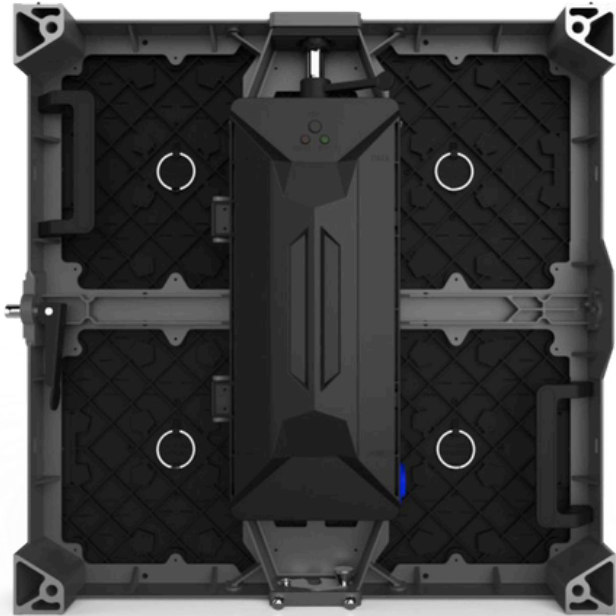
Simple Appearance, Delicate and Portable

Simple industrial design, free, noble, solemn, calm and stable, these characteristics gang together, in leading the fashion at the same time display the deep, mysterious, hidden strength side.

Simple and symmetrical shape design highlights the solemn, interpretation the beauty of the GN series.



Die-casting Aluminum, High Precision, High Strength



Testing by the authoritative testing institutions, die-casting aluminum material cabinets has high strength, tensile test can reached 15.69KN.

Testing by high and low temperature cold and hot cycle test, die-cast aluminum materials is more stable and difficult to deformation than magnesium alloy materials, so that the high precision of the cabinets can be guaranteed.



The tensile test report



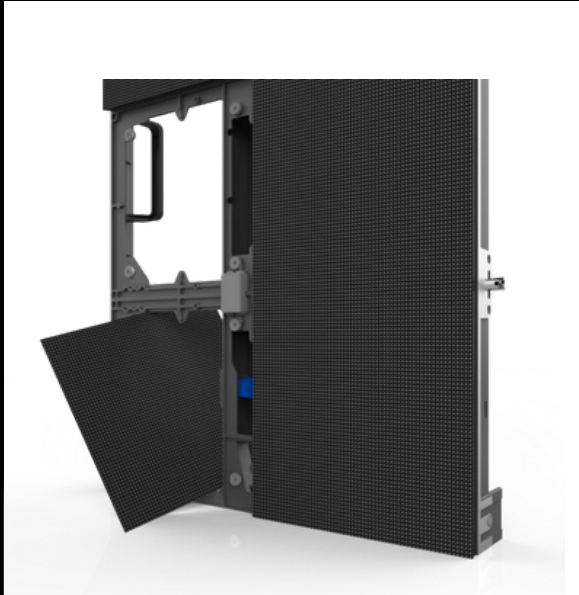
3.2·Performance



High definition images, dynamic animation effects, vivid video playing, support multiple broadcast format, widely application.

Stable Performance, High Definition

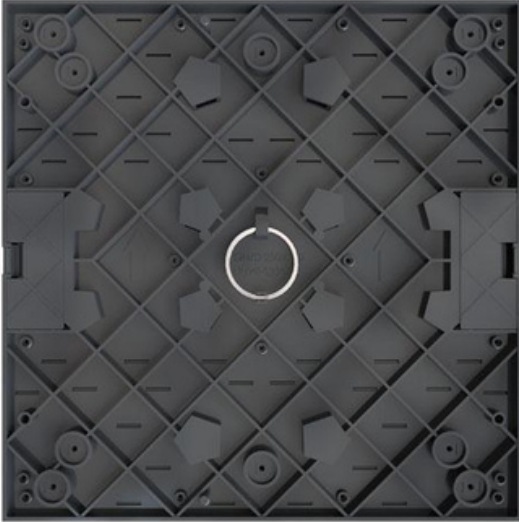
3.3 Structure



Full front serviced

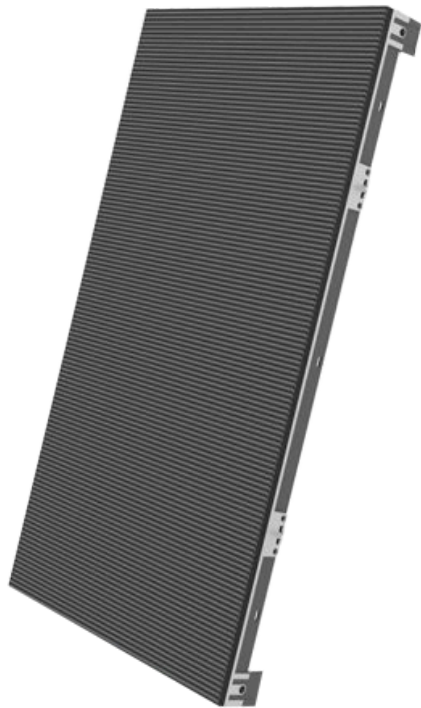
Front maintenance, no maintenance path needed each module is equipped with magnet cylinders, which connect the module onto the panel structure.

Unified Modules Design Platform



GN series with module size of 250x250mm provides magnet module assembling method for front and rear access.

Various options on pitches(available from P1.9 to P5.9)



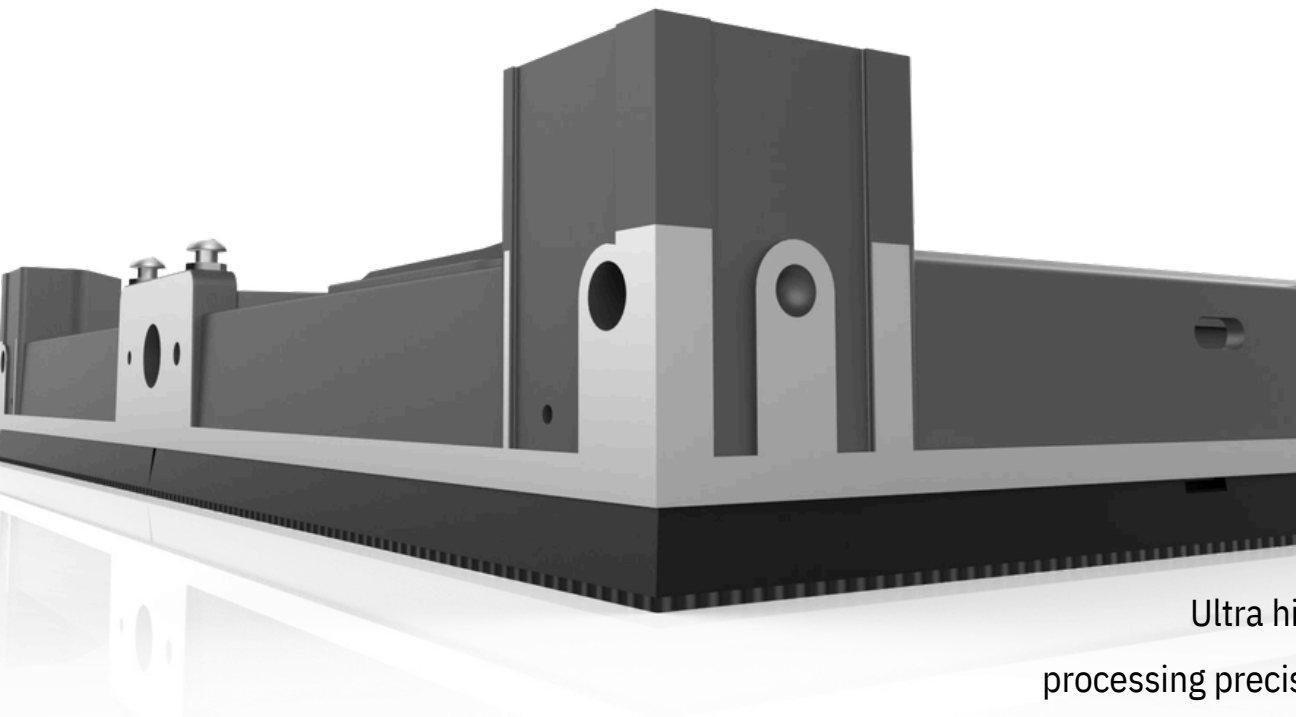
Vertical extremely wide viewing angle

Small pitch outdoor product will bring you exquisite display effect, and high brightness will ensure the visibility. The content will embrace you with vivid color and great visual impact.



Lighter, thinner, more convenient

The thickness of our product reduced by 96mm comparing with traditional cabinet is reduced, saving more transport and labor cost to be saved.



High quality cabinet

Ultra high precision CNC workmanship
processing precision $< 0.1\text{mm}$. Special seamless

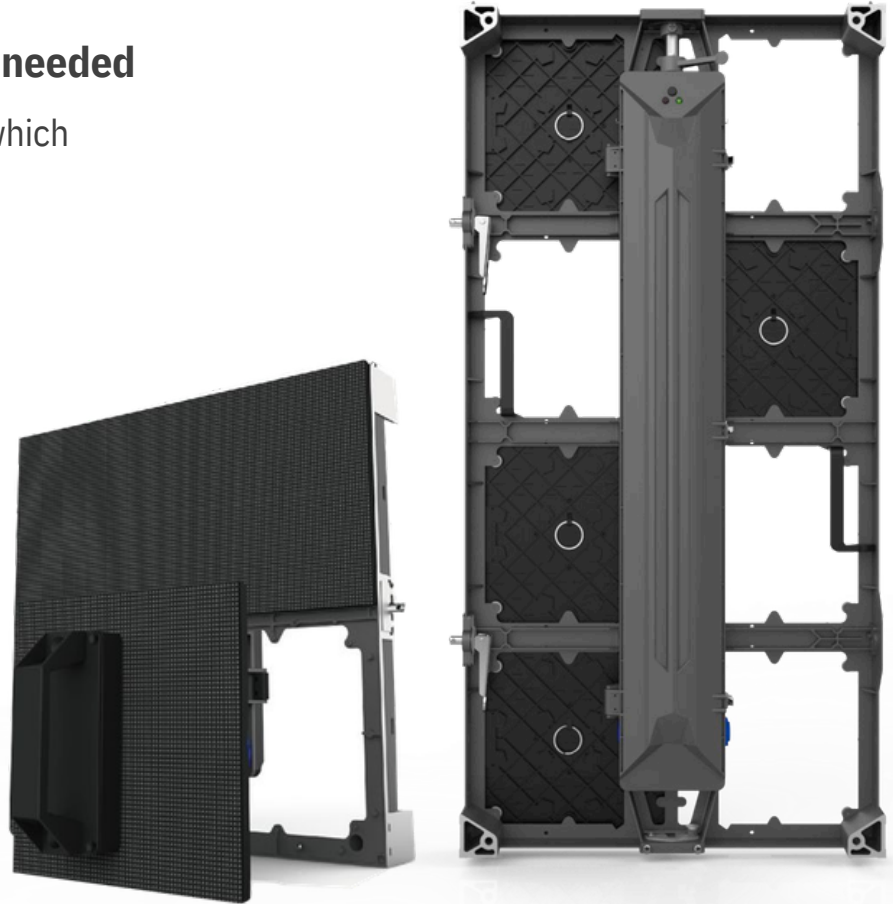
Connection design. Adjustable cabinet structure to control the gap within $\pm 0.03\text{mm}$

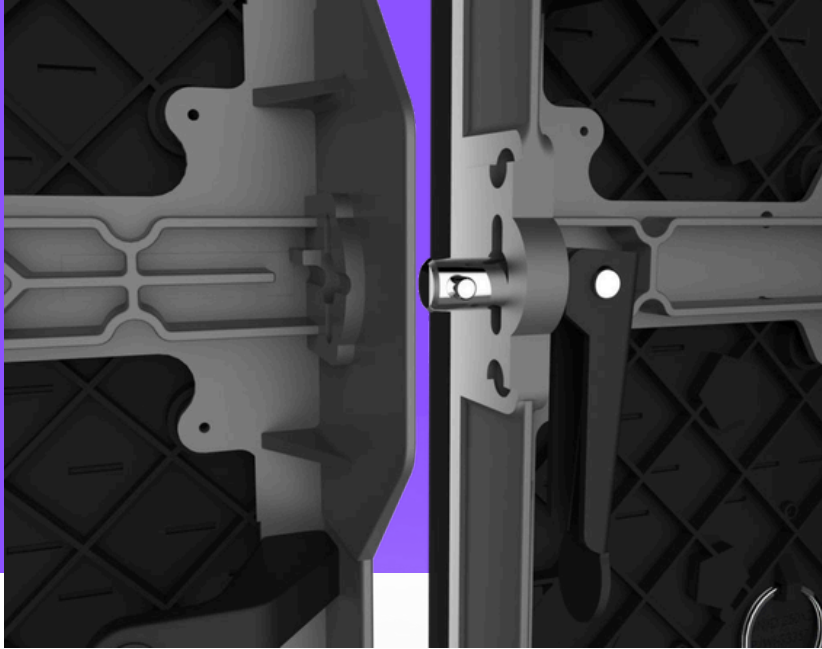
Front maintenance, no maintenance path needed

Each module is equipped with magnet cylinder, which connects the module onto the panel structure.

Smarter, high efficiency on maintenance.

This newest generation screen adopts full front Service, a breakthrough for easy maintenance without tools, which makes repairing and replacement more efficient. With a simple press on the module smart structure, users can replace the module within 10 sec, supply power and take out the receiving card from the front too.





Right and left fast locked

There are 1 set fast locks on cabinet right and left side which can splicing two cabinet quickly.



PART 4

Product Features

DISPLAY A BETTER **WORLD** FOR ALL

GN	GN-1.9	GN-2.5	GN-2.6	GN-3.1	GN-3.9	GN-4.8	GN-5.9
Series	SMD1010	SMD2020	SMD2020	SMD2020	SMD2020	SMD2020	SMD2020
LED Type							
Pixel Pitch	1.9mm	2.6mm	2.84mm	3.1mm3.9mm		4.8mm	5.9mm
Panel Dimensions	500x500x85mm			500x500x83/500x1000x85 mm			
Module Size				250x250mm			
Weight Per Panel	7.5/13.5kg	7.5/13.5kg	7.5/13.5kg	7.5/13.5kg7.5/13.5kg		7.5/13.5kg	7.8/13.5kg
Refresh Rate				1920-3840hz			
Driving Type	1/22 1/16		1/30	1/16 1/16		1/13	1/7
Brightness	600nits			900nits			
Max Power	640W/m ²	528W/m ²	445W/m ²	390W/m ²	432W/m ²	412W /m ²	480W /m ²
IP Rating				IP40/IP20			
Typical Value				100000Hrs			
Installation Type				Fix			
Panel Material				Die Casting Aluminum			