



# STREET CO'

DISPLAY SOLUTION EXPERT

[www.streetcommunication.com](http://www.streetcommunication.com)





### Transparent and invisible whole screen

The whole screen is transparent without frame; it is seamlessly spliced in a large area; the back side is invisible without floodlight.



### Holographic 3D suspension images

Display effect of 3D holographic and spatial suspension images.



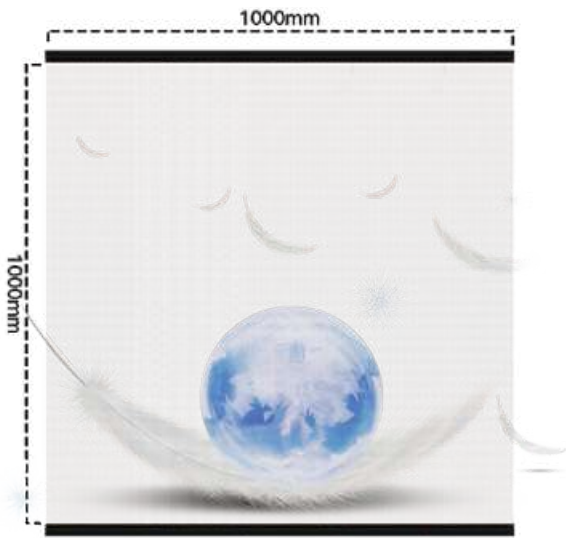
### Transparent and excellent image quality

Equally spaced pixel layout for high-definition image quality; static scanning with combined diver board for table images; 16bit gray scale with exquisite colors.



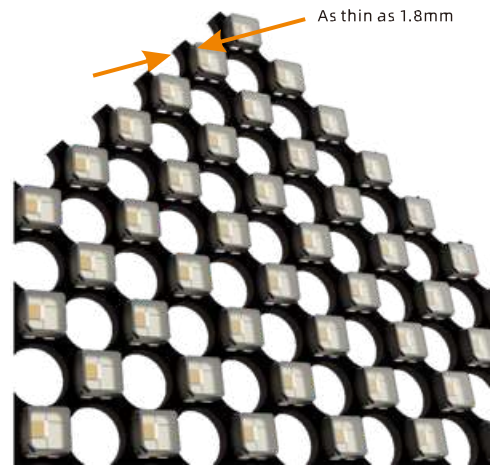
### High brightness & high contrast

9,000:1 (high contrast), 5,000cd/m<sup>2</sup> (high brightness), dazzling and eye-catching.



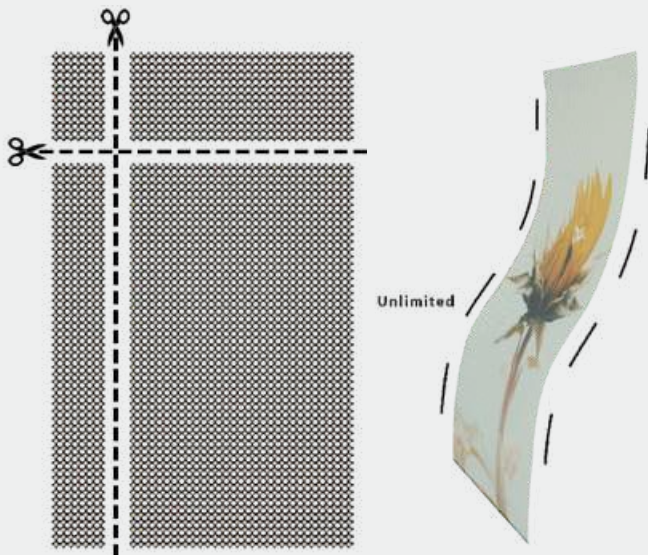
### Light weight of 6kg/m<sup>2</sup>

With professional aesthetic design, the display screen is lightweight and beautiful and weighs only 6kg/m<sup>2</sup>.



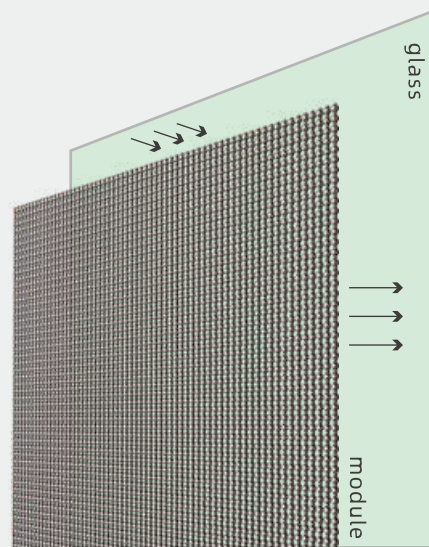
### As thin as 1.8mm

The thickness of the screen is less than 2mm, and it is seamlessly attached on a curved surface to show an integral whole on the transparent glass.



### Flexible and cuttable

Standard module can be bent and cut with flexible and skillful applications. It is the best partner of curved glass and irregular screens.

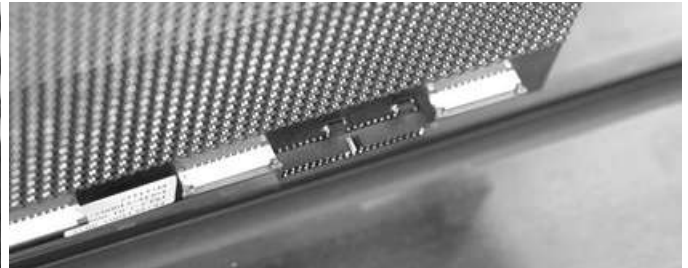
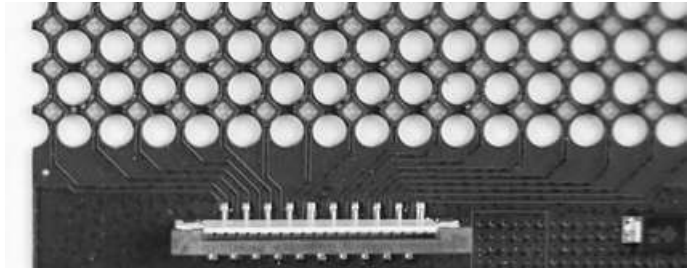
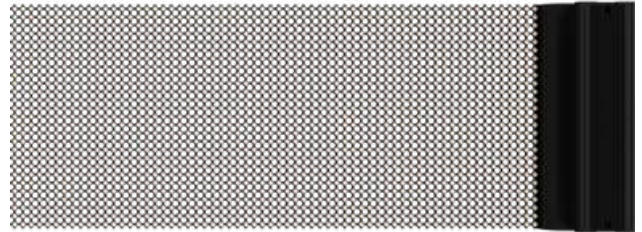


### Minimal installation and maintenance

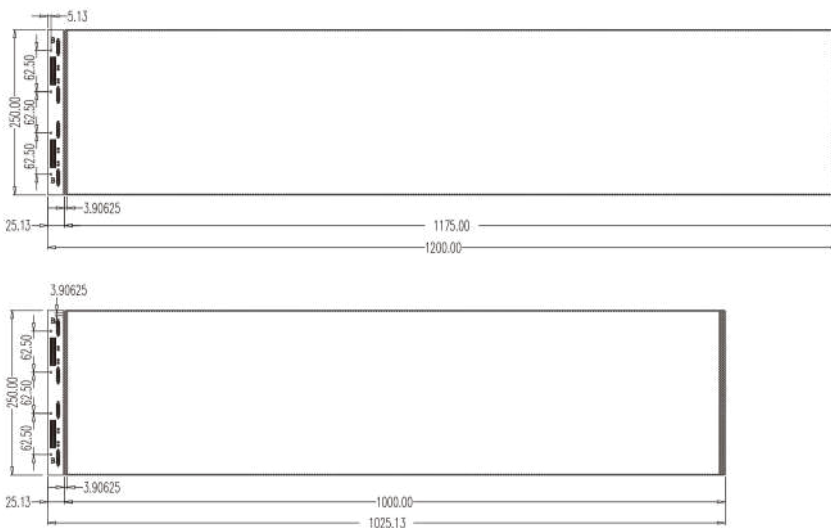
The product is modular and can be directly attached to the front or back side of transparent glass without damaging the original structure of the building or affecting indoor lighting.

## Holographic Invisible Screen • Series M

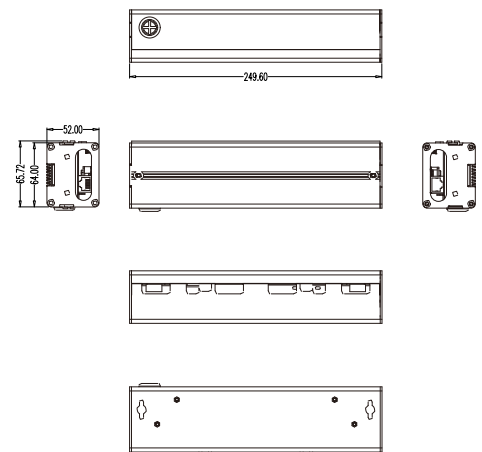
Ultra-clear and ultra-thin, high-transparency and high-temperature resistant high-end materials are used. The light board is perfectly designed to easily achieve a permeability of up to 80%. The overall mounting without a structural skeleton, the screen body can be spliced left and right, up and down, and can achieve a display height or width of 2.4-3 meters. Commercial window, glass curtain wall and other indoor and outdoor scenes.



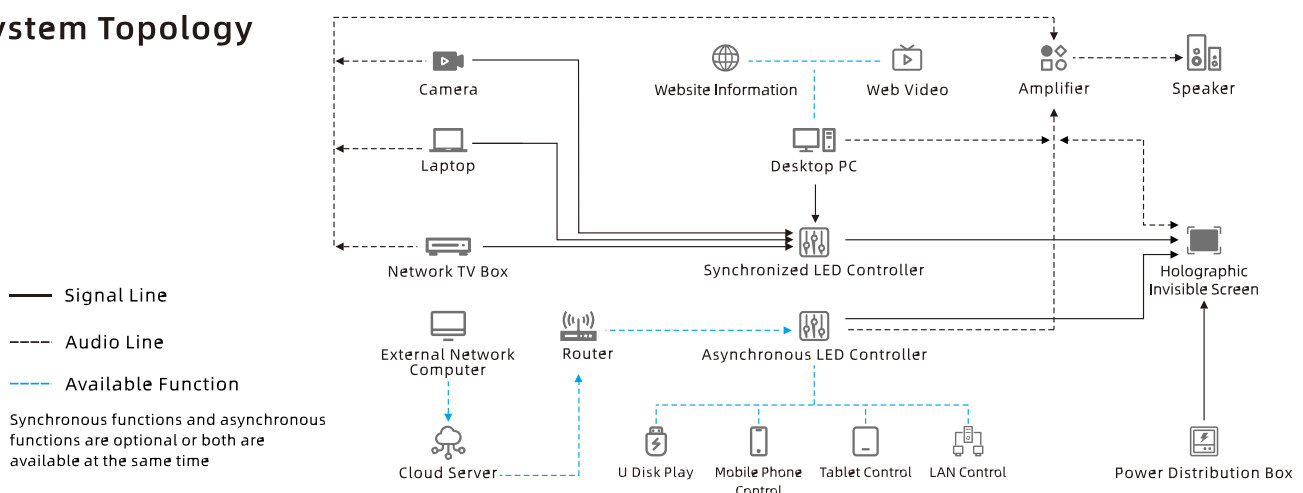
▼ Module dimensions: 0.25\*1.2m / 0.5\*1.2m



▼ Control Box



## System Topology



## Specifications

| Model   | M3   | M6   |
|---|--|--|
| Pixel Pitch (mm)(horizontal / vertical)       | P3.91/P3.91                                  | P6.25/P6.25                                  |
| Pixel Density(dot/m <sup>2</sup> )            | 65536  | 25600  |
| Transparency Rate                             | 80%  | 90%  |
| Display Dimension (mm) (w*h)                  | 250x1000/250x1200                            | 250x1200/250x1500                            |
| Resolution (dot) (w*h)                        | 64x256/64x300                                | 40x188/40x236                                |
| Brightness(cd/m <sup>2</sup> )                | ≥4000  | ≥5000  |
| Weight(Kg/m <sup>2</sup> )                    | 6  | 5  |
| Encapsulation Type                            | Light Board & Driving Board Integrated       | Light Board & Driving Board Integrated       |
| Scanning Mode                                 | Static Driving (Single Pixel Single Control) | Static Driving (Single Pixel Single Control) |
| Lifespan                                      | ≥100,000.00 hours                            | ≥100,000.00 hours                            |
| Pixel Configuration                           | 16bit  | 16bit  |
| Maximum Power Consumption (w/m <sup>2</sup> ) | 1200   | 1200   |
| Average Power Consumption (w/m <sup>2</sup> ) | 500  | 500  |
| Control System                                | Colorlight / Novastar                        | Colorlight / Novastar                        |
| Input Voltage                                 | AC100~240V 50/60 Hz                          | AC100~240V 50/60 Hz                          |
| Working Voltage for Module                    | DC 4.2V ± 0.2V                               | DC 4.2V ± 0.2V                               |
| Working Temperature                           | Temperature 0°C~50°C                         | Temperature 0°C~50°C                         |
| Working Humidity                              | Humidity: 20% -85% (Without Condensation)    | Humidity: 20% -85% (Without Condensation)    |
| Storage Temperature                           | Temperature -20°C~60°C                       | Temperature -20°C~60°C                       |
| Storage Humidity                              | Humidity: 10% -85% (Without Condensation)    | Humidity: 10% -85% (Without Condensation)    |
| Protection Degree                             | IP20   | IP20   |
| Frame Material                                | Aviation Aluminum Alloy                      | Aviation Aluminum Alloy                      |
| Installation Environment                      | Indoor                                       | Indoor                                       |
| Installation Way                              | Pearl Cotton+Wooden case/Airbox              | Pearl Cotton+Wooden case/Airbox              |

Statement: The relevant parameters in the table are subject to real-time update, and the data is for reference only.  
Upgrade will be made without further notice.