



Clemastine Fumarate in a Liquid Vehicle

**Antihistamine Treatment
for Multi-Symptom Relief**

| Titration-Friendly Dosing

| Established Therapy Option

Clemastine Fumarate Syrup

0.5 mg/5 mL 120 mL

NDC:
64950-324-12

INDICATIONS:

Clemastine Fumarate Syrup is indicated for the relief of symptoms associated with allergic rhinitis such as sneezing, rhinorrhea, pruritus and lacrimation. Clemastine Fumarate Syrup is indicated for use in pediatric populations (age 6 years through 12) and adults.

It should be noted that clemastine is indicated for the relief of mild uncomplicated allergic skin manifestations of urticaria and angioedema at the 2 mg dosage level only.

CONTRAINDICATIONS:

Antihistamines are contraindicated in patients hypersensitive to the drug or to other antihistamines of similar chemical structure.

Antihistamines should not be used in newborn or premature infants. Because of the higher risk of antihistamines for infants generally and for newborns and prematures in particular, antihistamine therapy is contraindicated in nursing mothers.

WARNINGS:

Antihistamines should be used with considerable caution in patients with: narrow angle glaucoma, stenosing peptic ulcer, pyloroduodenal obstruction, symptomatic prostatic hypertrophy, and bladder neck obstruction.

For full Prescribing Information, see attached Product Insert.

You are encouraged to report negative side effects of prescription drugs to the FDA. Visit fda.gov/medwatch or call 1-800-FDA-1088.



For Some Patients, Tablets Aren't the Best Fit

For patients with dysphagia (difficulty swallowing), clemastine fumarate syrup provides an easier alternative to tablets with flexible, accurate dosing.



Flexible Dosing

Easily titrate up or down as needed

Patient Friendly

Liquid formulation makes administration easier for those who struggle with tablets

Consistent Relief

Supports effective management of allergic conditions

Antihistamine Treatment For Allergic Rhinitis

Patients who use clemastine fumarate syrup for their allergic rhinitis symptoms can experience relief from:



Sneezing



Runny nose



Itchy skin



Lacrimation

HOW TO WRITE:

Clemastine Fumarate Syrup

Adults: 10-20 mL by mouth twice daily. (Max 6 mg/day).

0.5 mg/5 mL

Dispense as written.



Visit our website at:
FLEXDOSING.COM

©2026 Flexdosing.com
All rights reserved.
LB-FD-01 Rev. 04/2026

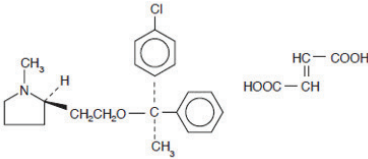
CLEMASTINE FUMARATE- clemastine fumarate syrup

Genus Lifesciences

**CLEMASTINE FUMARATE SYRUP, 0.5 mg/5 mL
(present as clemastine fumarate 0.67 mg/5 mL)
Rx only**

DESCRIPTION

Each 5 mL (teaspoonful) of Clemastine Fumarate Syrup for oral administration contains clemastine 0.5 mg (present as clemastine fumarate 0.67 mg). Other ingredients: Alcohol 5.5%, Flavors, Maleic Acid, Methylparaben, Propylene Glycol, Propylparaben, Purified Water, Saccharin Sodium, Sodium Hydroxide, and Sorbitol. Clemastine fumarate belongs to the benzhydryl ether group of antihistaminic compounds. The chemical name is (+)-(2R)-2-[2-[[[(R)-p-Chloro- α -methyl- α -phenylbenzyl]-oxy]ethyl]-1-methylpyrrolidine fumarate and has the following structural formula:



$C_{21}H_{26}ClNO \cdot C_4H_4O_4$ M.W. 459.97

Clemastine fumarate occurs as a colorless to faintly yellow, odorless, crystalline powder. Clemastine Fumarate Syrup has an approximate pH of 6.2.

CLINICAL PHARMACOLOGY

Clemastine fumarate is an antihistamine with anticholinergic (drying) and sedative side effects. Antihistamines competitively antagonize various physiological effects of histamine including increased capillary permeability and dilatation, the formation of edema, the "flare" and "itch" response, and gastrointestinal and respiratory smooth muscle constriction. Within the vascular tree, H₁-receptor antagonists inhibit both the vasoconstrictor and vasodilator effects of histamine. Depending on the dose, H₁-receptor antagonists can produce CNS stimulation or depression.

Most antihistamines exhibit central and/or peripheral anticholinergic activity. Antihistamines act by competitively blocking H₁-receptor sites. Antihistamines do not pharmacologically antagonize or chemically inactivate histamine, nor do they prevent the release of histamine.

Pharmacokinetics

Antihistamines are well-absorbed following oral

administration. Chlorpheniramine maleate, clemastine fumarate, and diphenhydramine hydrochloride achieve peak blood levels within 2-5 hours following oral administration. The absorption of antihistamines is often partially delayed by the use of controlled release dosage forms. In these instances, plasma concentrations from identical doses of the immediate and controlled release dosage forms will not be similar. Tissue distribution of the antihistamines in humans has not been established. Antihistamines appear to be metabolized in the liver chiefly via mono- and didemethylation and glucuronide conjugation.

Antihistamine metabolites and small amounts of unchanged drug are excreted in the urine. Small amounts of the drugs may also be excreted in breast milk.

In normal human subjects who received histamine injections over a 24-hour period, the antihistaminic activity of clemastine reached a peak at 5-7 hours, persisted for 10-12 hours and, in some cases, for as long as 24 hours. Pharmacokinetic studies in man utilizing 3H and 14C labeled compound demonstrates that: clemastine is rapidly absorbed from the gastrointestinal tract, peak plasma concentrations are attained in 2-4 hours, and urinary excretion is the major mode of elimination.

INDICATIONS AND USAGE

Clemastine Fumarate Syrup is indicated for the relief of symptoms associated with allergic rhinitis such as sneezing, rhinorrhea, pruritus and lacrimation. Clemastine Fumarate Syrup is indicated for use in pediatric populations (age 6 years through 12) and adults (see **DOSAGE AND ADMINISTRATION**).

It should be noted that clemastine is indicated for the relief of mild uncomplicated allergic skin manifestations of urticaria and angioedema at the 2 mg dosage level only.

CONTRAINDICATIONS

Antihistamines are contraindicated in patients hypersensitive to the drug or to other antihistamines of similar chemical structure (see **PRECAUTIONS- Drug Interactions**).

Antihistamines should not be used in newborn or premature infants. Because of the higher risk of antihistamines for infants generally and for newborns and premature in particular, antihistamine therapy is contraindicated in nursing mothers (see **PRECAUTIONS-Nursing Mothers**).

WARNINGS

Antihistamines should be used with considerable caution in patients with: narrow angle glaucoma, stenosing peptic ulcer, pyloroduodenal obstruction, symptomatic prostatic hypertrophy, and bladder neck obstruction.

Use with CNS Depressants

Clemastine has additive effects with alcohol and other CNS depressants (hypnotics, sedatives, tranquilizers, etc.).

Use in Activities Requiring Mental Alertness

Patients should be warned about engaging in activities requiring mental alertness such as driving a car or operating appliances, machinery, etc.

Use in the Elderly (approximately 60 years or older)

Antihistamines are more likely to cause dizziness, sedation, and hypotension in elderly patients.

PRECAUTIONS

General

Clemastine fumarate should be used with caution in patients with:

history of bronchial asthma, increased intraocular pressure, hyperthyroidism, cardiovascular disease, and hypertension.

Information for Patients

Patients taking antihistamines should receive the following information and instructions:

1. Antihistamines are prescribed to reduce allergic symptoms.
2. Patients should be questioned regarding a history of glaucoma, peptic ulcer, urinary retention, or pregnancy before starting antihistamine therapy.
3. Patients should be told not to take alcohol, sleeping pills, sedatives, or tranquilizers while taking antihistamines.
4. Antihistamines may cause drowsiness, dizziness, dry mouth, blurred vision, weakness, nausea, headache, or nervousness in some patients.
5. Patients should avoid driving a car or working with hazardous machinery until they assess the effects of this medicine.
6. Patients should be told to store this medicine in a tightly closed container in a dry, cool place away from heat or direct sunlight and out of the reach of children.

Drug Interactions

Additive CNS depression may occur when antihistamines are administered concomitantly with other CNS depressants including barbiturates, tranquilizers, and alcohol. Patients receiving antihis-

tamines should be advised against the concurrent use of other CNS depressant drugs. Monoamine oxidase (MAO) inhibitors prolong and intensify the anticholinergic effects of antihistamines.

Carcinogenesis, Mutagenesis, Impairment of Fertility

Carcinogenesis and Mutagenesis

In a 2-year oral study in the rat at a dose of 84 mg/kg (about 500 times the adult human dose) and an 85-week oral study in the mouse at 206 mg/kg (about 1300 times the adult human dose), clemastine fumarate showed no evidence of carcinogenesis. No mutagenic studies have been conducted with clemastine fumarate.

Impairment of Fertility

Oral doses of clemastine fumarate in the rat produced a decrease in mating ability of the male at 312 times the adult human dose. This effect was not found at 156 times the adult human dose.

Pregnancy

Teratogenic Effects

Pregnancy Category B

Oral reproduction studies performed with clemastine fumarate in rats and rabbits at doses up to 312 and 188 times the adult human doses respectively, have revealed no evidence of teratogenic effects.

There are no adequate and well-controlled studies of clemastine fumarate in pregnant women. Because animal reproduction studies are not always predictive of human response, this drug should be used in pregnancy only if clearly needed.

Nursing Mothers

Although quantitative determinations of antihistaminic drugs in breast milk have not been reported, qualitative tests have documented the excretion of diphenhydramine, pyrilamine, and tripeleminamine in human milk. Because of the potential for adverse reactions in nursing infants from antihistamines, a decision should be made whether to discontinue nursing or to discontinue the drug.

Pediatric Use

The safety and efficacy of Clemastine Fumarate Syrup has been confirmed in the pediatric population (age 6 years through 12). Safety and dose tolerance studies have confirmed pediatric patients 6 through 11 years tolerated dosage ranges of 0.75 to 2.25 mg clemastine. In pediatric patients particularly,

antihistamines in overdosage may produce hallucinations, convulsions and death. Symptoms of antihistamine toxicity in pediatric patients may include fixed dilated pupils, flushed face, dry mouth, fever, excitation, hallucinations, ataxia, incoordination, athetosis, tonic- clonic convulsions, and postictal depression (see **OVERDOSAGE**).

ADVERSE REACTIONS

The most frequent adverse reactions are italicized:

Nervous System

Sedation, sleepiness, dizziness, disturbed coordination, fatigue, confusion, restlessness, excitation, nervousness, tremor, irritability, insomnia, euphoria, paresthesia, blurred vision, diplopia, vertigo, tinnitus, acute labyrinthitis, hysteria, neuritis, convulsions.

Gastrointestinal System

Epigastric distress, anorexia, nausea, vomiting, diarrhea, constipation.

Respiratory System

Thickening of bronchial secretions, tightness of chest and wheezing, nasal stuffiness.

Cardiovascular System

Hypotension, headache, palpitations, tachycardia, extrasystoles.

Hematologic System

Hemolytic anemia, thrombocytopenia, agranulocytosis.

Genitourinary System

Urinary frequency, difficult urination, urinary retention, early menses.

General

Urticaria, drug rash, anaphylactic shock, photosensitivity, excessive perspiration, chills, dryness of mouth, nose and throat.

To report SUSPECTED ADVERSE REACTIONS, contact Allucent at 1-866-511- 6754 or FDA at 1-800-FDA-1088 or www.fda.gov/medwatch.

OVERDOSAGE

Antihistamine overdosage reactions may vary from central nervous system depression to stimulation. In children, stimulation predominates initially in a syndrome which may include excitement, hallucinations, ataxia, incoordination, muscle twitching, athetosis, hyperthermia, cyanosis convulsions, tremors, and hyperreflexia followed by postictal depression and cardio-respiratory arrest. Convulsions in children may be preceded by mild depression.

Dry mouth, fixed dilated pupils, flushing of the face, and fever are common. In adults, CNS depression, ranging from drowsiness to coma, is more common. The convulsant dose of antihistamines lies near the lethal dose. Convulsions indicate a poor prognosis.

In both children and adults, coma and cardiovascular collapse may occur.

Deaths are reported especially in infants and children.

There is no specific therapy for acute overdosage with antihistamines. The latent period from ingestion to appearance of toxic effects is characteristically short (1/2-2 hours).

General symptomatic and supportive measures should be instituted promptly and maintained for as long as necessary.

Since overdoses of other classes of drugs (i.e. tricyclic antidepressants) may also present anticholinergic symptomatology, appropriate toxicological analysis should be performed as soon as possible to identify the causative agent.

In the conscious patient, vomiting should be induced even though it may have occurred spontaneously. If vomiting cannot be induced, gastric lavage is indicated. Adequate precautions must be taken to protect against aspiration, especially in infants and children. Charcoal slurry or other suitable agents should be instilled into the stomach after vomiting or lavage. Saline cathartics or milk of magnesia may be of additional benefit.

In the unconscious patient, the airway should be secured with a cuffed endotracheal tube before attempting to evacuate the gastric contents. Intensive supportive and nursing care is indicated, as for any comatose patient.

If breathing is significantly impaired, maintenance of an adequate airway and mechanical support of respiration is the most effective means of providing adequate oxygenation.

Hypotension is an early sign of impending cardiovascular collapse and should be treated vigorously. Although general supportive measures are important, specific treatment with intravenous infusion of a vasopressor titrated to maintain adequate blood pressure may be necessary.

Do not use with CNS stimulants.

Convulsions should be controlled by careful

administration of diazepam or a short-acting barbiturate, repeated as necessary. Physostigmine may also be considered for use in controlling centrally mediated convulsions.

Ice packs and cooling sponge baths, not alcohol, can aid in reducing the fever commonly seen in children. A more detailed review of antihistamine toxicology and overdose management is available in Gosselin, R.E., et. al., "Clinical Toxicology of Commercial Products."

DOSAGE AND ADMINISTRATION

DOSAGE SHOULD BE INDIVIDUALIZED ACCORDING TO THE NEEDS AND RESPONSE OF THE PATIENT.

Pediatric

Children aged 6 to 12 years

For Symptoms of Allergic Rhinitis

The starting dose is 1 teaspoonful (0.5 mg clemastine) twice daily. Since single doses of up to 2.25 mg clemastine were well tolerated by this age group, dosage may be increased as required, but not to exceed 6 teaspoonfuls daily (3 mg clemastine).

For Urticaria and Angioedema

The starting dose is 2 teaspoonfuls (1 mg clemastine) twice daily, not to exceed 6 teaspoonfuls daily (3 mg clemastine).

Adults and Children 12 Years and Over

For Symptoms of Allergic Rhinitis

The starting dose is 2 teaspoonfuls (1 mg clemastine) twice daily. Dosage may be increased as required, but not to exceed 12 teaspoonfuls daily (6 mg clemastine).

For Urticaria and Angioedema

The starting dose is 4 teaspoonfuls (2 mg clemastine) twice daily, not to exceed 12 teaspoonfuls daily (6 mg clemastine).

HOW SUPPLIED

Clemastine Fumarate Syrup: clemastine 0.5 mg/5 mL (present as clemastine fumarate 0.67 mg/5 mL). A clear, colorless liquid with a citrus flavor (passion fruit), in 120 mL bottle.

120 mL bottle (NDC 64950-324-12)

Store at controlled room temperature, between 20° and 25°C (68° and 77°F) (see USP).

Distributed By:

Genus Lifesciences Inc.
Allentown, PA 18102
Rev. 09/24

PRINCIPAL DISPLAY PANEL - 120 mL Bottle Label

NDC 64950-324-12

Clemastine

Fumarate

Syrup

0.5 mg/5 mL *

Each 5 mL (teaspoonful) contains:

Clemastine 0.5 mg*

Alcohol 5.5%

*(present as clemastine fumarate 0.67 mg)

Rx only

120 mL

Genus

Lifesciences Inc.

MALEIC ACID (UNII: 91XW058U2C)

METHYLPARABEN (UNII: A2I8C7HI9T)

PROPYLENE GLYCOL (UNII: 6DC9Q167V3)

PROPYLPARABEN (UNII: Z8IX2SC1OH)

SACCHARIN SODIUM (UNII: SB8ZUX40TY)

SORBITOL (UNII: 506T60A25R)

WATER (UNII: 059QF0K00R)

SODIUM HYDROXIDE (UNII: 55X04QC32I)

Genus Lifesciences