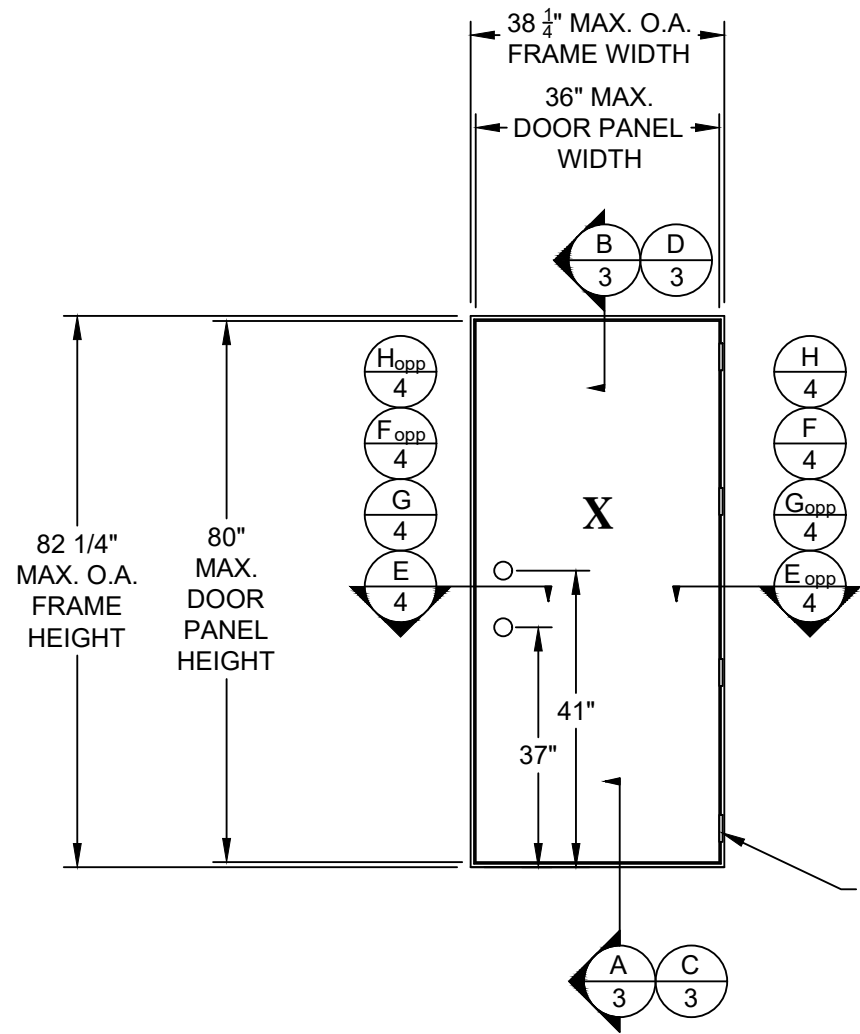


MODEL 407 NON-IMPACT OUTSWING VINYL LAMINATED STEEL DOOR INSTALLATION ANCHORAGE DRAWING

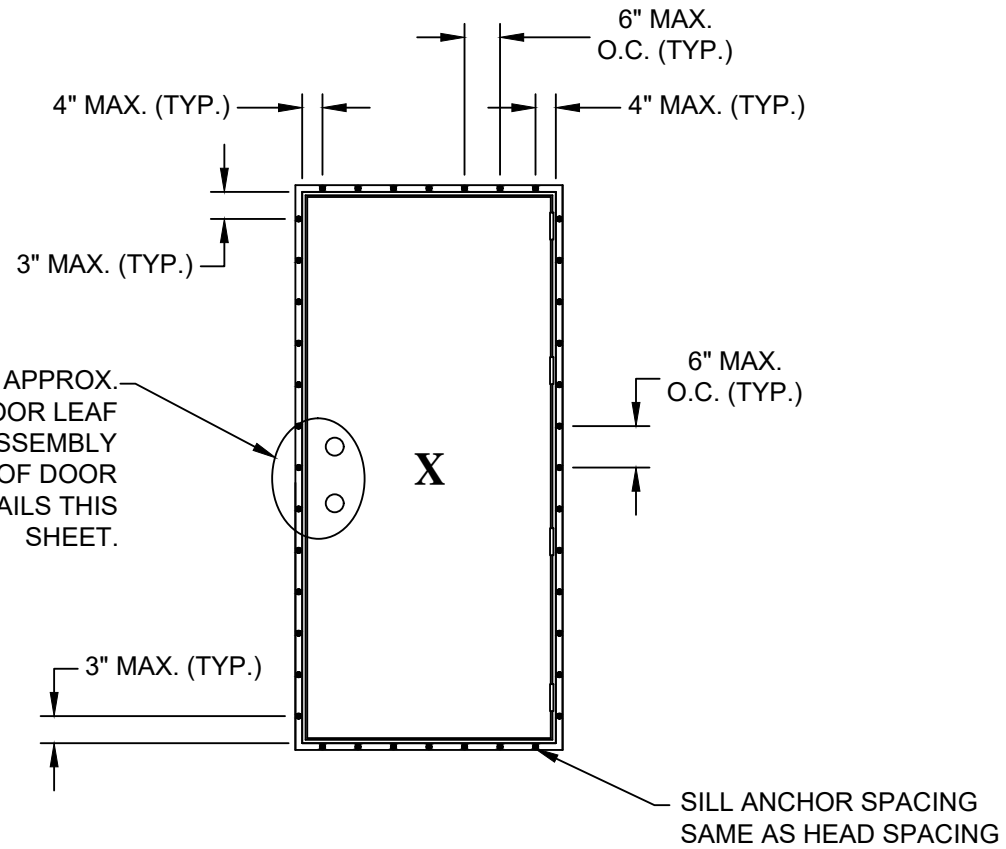
Robert J. Amoruso, P.E.
FL P.E. No. 49752



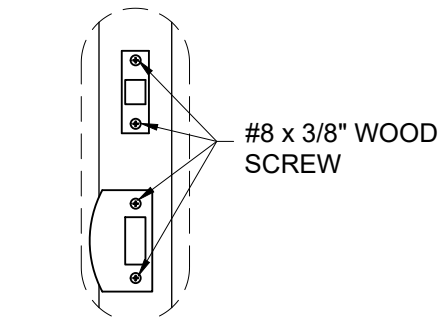
ELEVATION
EXTERIOR VIEW

FOUR HALF HINGES, 3" AND 21" FROM EACH END OF THE DOOR PANEL SECURED BY #8 X 3/4" SCREWS (TYP.)

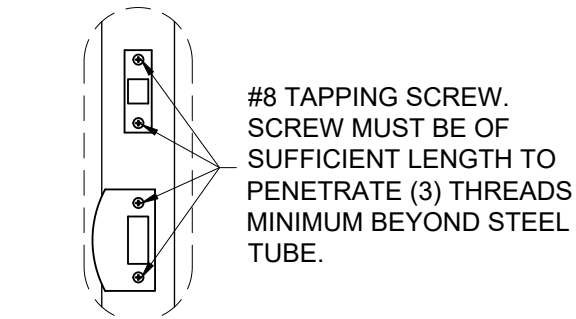
LOCK ASSEMBLY IS LOCATED APPROX. 37" ABOVE BOTTOM OF DOOR LEAF AND THE DEAD BOLT ASSEMBLY APPROX. 41" ABOVE BOTTOM OF DOOR LEAF. SEE STRIKE DETAILS THIS SHEET.



ANCHOR LAYOUT
EXTERIOR VIEW



**ENTRY DOOR
STRIKE DETAIL**
WOOD FRAME SUBSTRATE



**ENTRY DOOR
STRIKE DETAIL**
STEEL TUBING SUBSTRATE

ANCHORING NOTES:

1. MINIMUM NUMBER OF ANCHORS IN JAMBS IS 14. ANCHOR SPACING VARIES, BUT NOT TO EXCEED 6" MAXIMUM O.C.
2. MINIMUM NUMBER OF ANCHORS IN HEAD AND SILL IS 6. ANCHOR SPACING VARIES, BUT NOT TO EXCEED 6" MAXIMUM O.C.

PROJECT NUMBER: 419-0903

ELIXIR DOOR & METALS CO.

1215 POPE DRIVE
DOUGLAS, GEORGIA 31533

TITLE: MODEL 407 NON-IMPACT OUTSWING
VINYL LAMINATED STEEL DOOR
ELEVATION AND ANCHOR LAYOUT

PREPARED BY:

DRAWN BY: TJH

DATE: 02/29/12

SCALE: N.T.S.

DRAWING NO: ELIX0052

REV: B

SHEET: 2 OF 4

PTC PRODUCT DESIGN GROUP, LLC
PO BOX 520775
LONGWOOD, FLORIDA 32752
Phone: 321.690.1788
Fax: 321.690.1789
Email: info@ptc-corp.com

REV: B

SHEET: 2 OF 4

DESCRIPTION

DATE

BY

Robert J. Amoruso, P.E.
FL P.E. No. 49752



PREPARED BY:

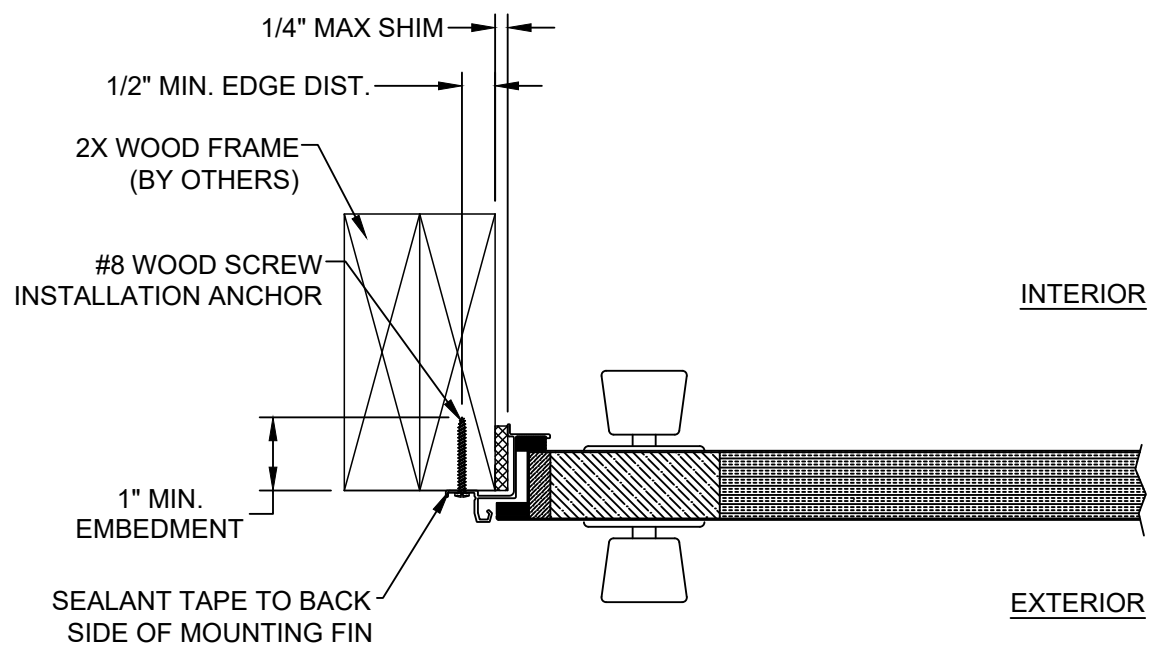
PFC

PFC PRODUCT DESIGN GROUP, LLC
PO BOX 520715
LONGWOOD, FLORIDA 32752
ERPE C.A. NO. 25935

Phone: 321.690.1786
Fax: 321.690.1789
Email: info@pfc-corp.com

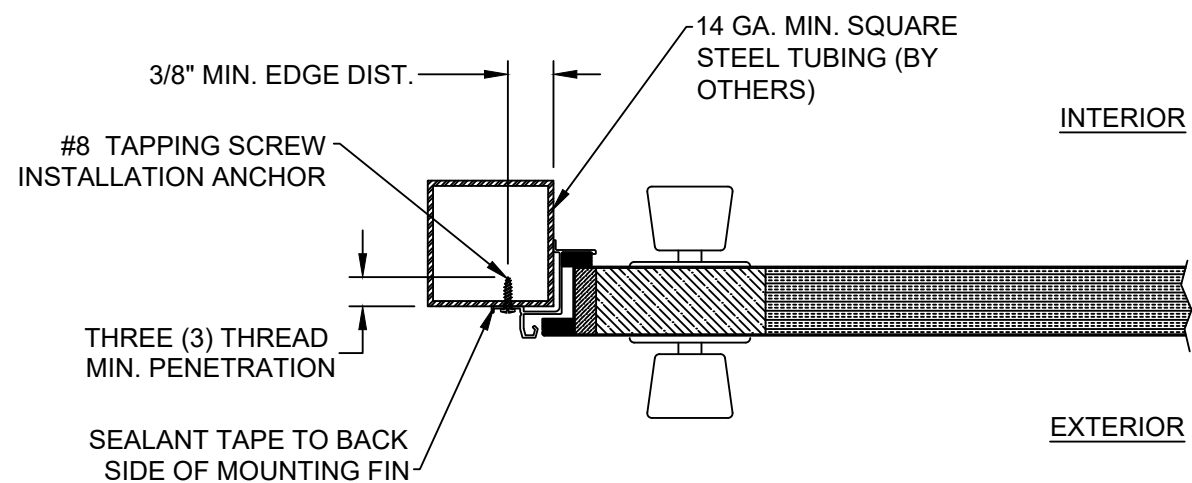
DRAWN BY:	TJH	DATE:	02/29/12
SCALE:	N.T.S.	DRAWING NO:	ELIX0052
REV:	B	SHEET:	3 OF 4

Robert J. Amoruso, P.E.
FL P.E. No. 49752

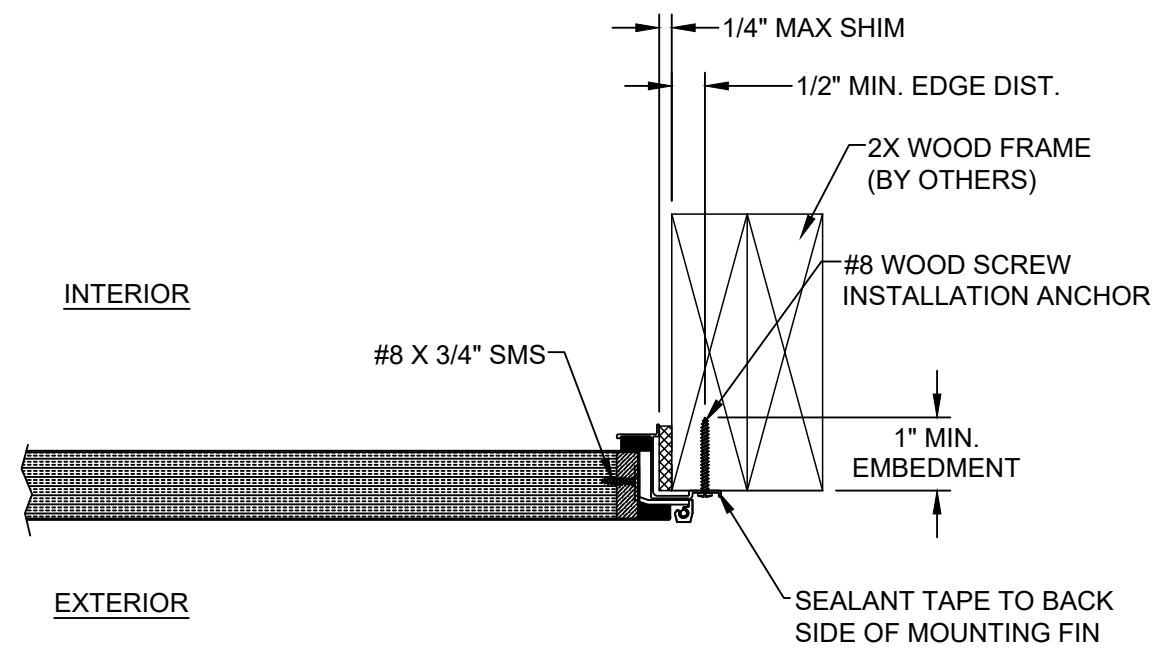


E HORIZONTAL SECTION

WOOD FRAME SUBSTRATE

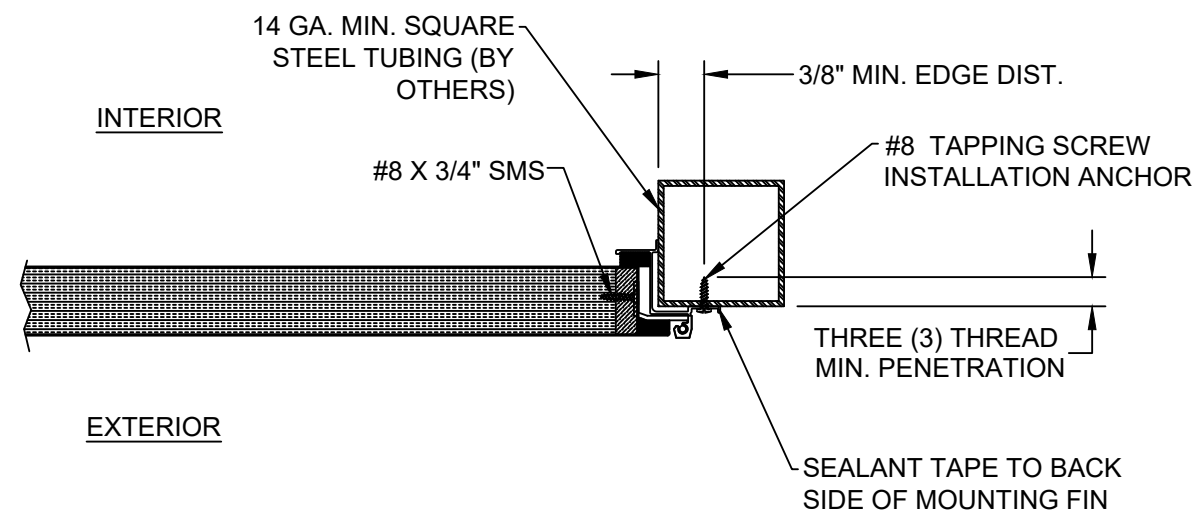


G **HORIZONTAL SECTION**
STEEL TUBING SUBSTRATE



F HORIZONTAL SECTION

WOOD FRAME SUBSTRATE



H HORIZONTAL SECTION

PROJECT NUMBER: 419-0903

ELIXIR DOOR & METALS CO.
1215 POPE DRIVE
DOUGLAS, GEORGIA 31533

TITLE: MODEL 407 NON-IMPACT OUTSWING VINYL LAMINATED STEEL DOOR VERTICAL CROSS SECTIONS

PREPARED BY:

PDC

PDC PRODUCT DESIGN GROUP, LLC
PO BOX 520775
LONGWOOD, FLORIDA 32752
FSPE C.A. NO. 25935

Phone: 321.690.1788
Fax: 321.690.1789
Email: info@pdc-corp.com

Robert J. Amoruso, P.E.
FL P.E. No. 49752

B	UPDATE TO CURRENT EDITION FBC	1/25/21	RJA
REV	DESCRIPTION	DATE	BY