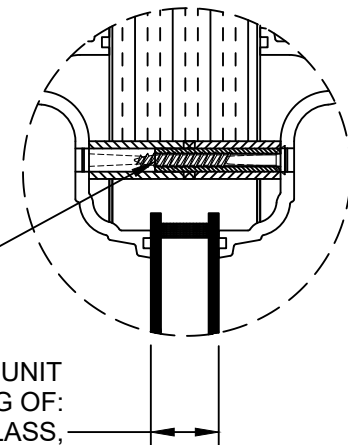
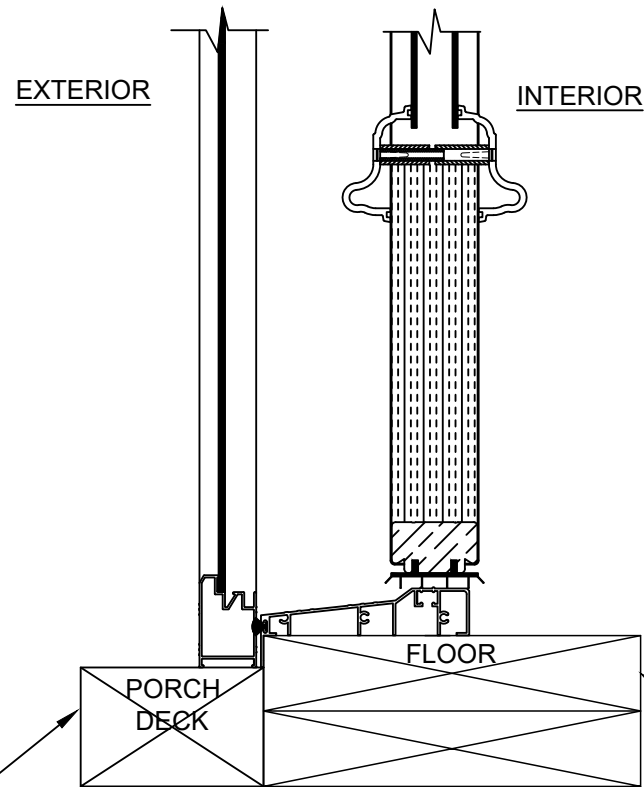


B VERTICAL SECTION
WOOD FRAME SUBSTRATE



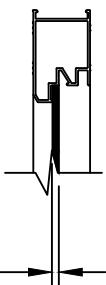
**DOOR PANEL
GLAZING DETAIL**



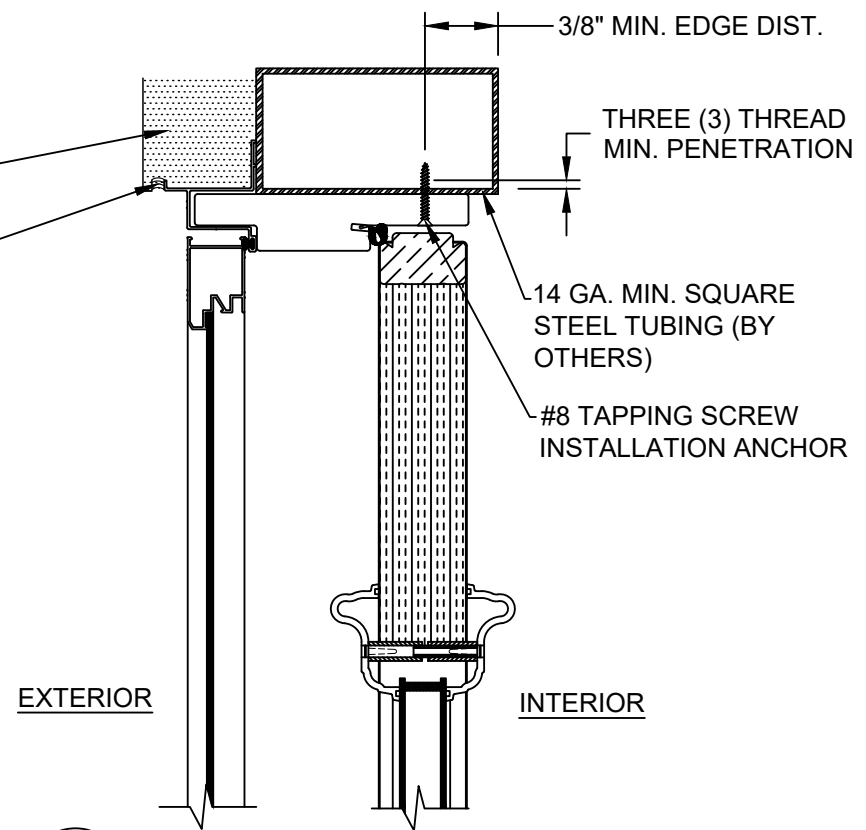
A VERTICAL SECTION
WOOD FRAME SUBSTRATE

1/8" TEMPERED GLASS

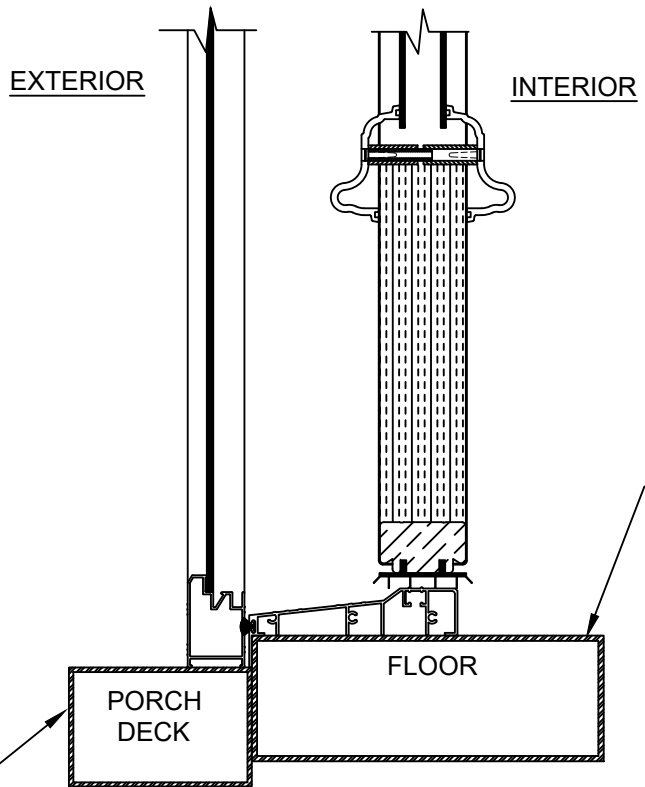
**STORM DOOR
GLAZING DETAIL**



14 GA. MIN. SQUARE
STEEL TUBING (BY
OTHERS)



D VERTICAL SECTION
STEEL TUBING SUBSTRATE



C VERTICAL SECTION
STEEL TUBING SUBSTRATE

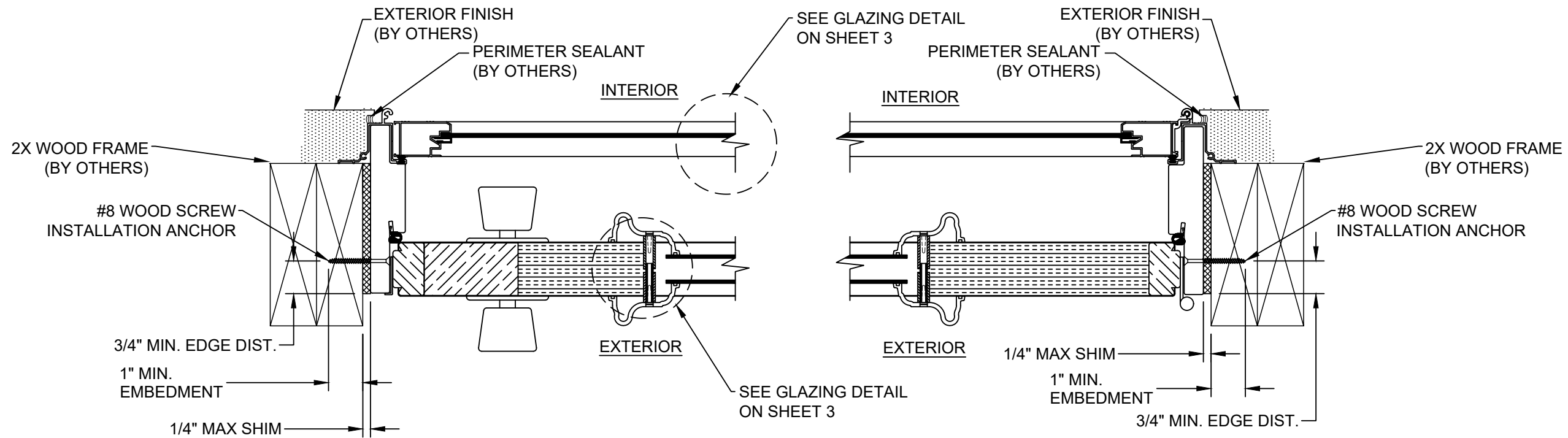
PROJECT NUMBER: 419-0903

ELIXIR DOOR & METALS CO.
1215 POPE DRIVE
DOUGLAS, GEORGIA 31533

TITLE: MODEL 7500 NON-IMPACT INSWING
VINYL LAMINATED STEEL DOOR W/STORM DOOR
VERTICAL CROSS SECTIONS AND GLAZING DETAIL

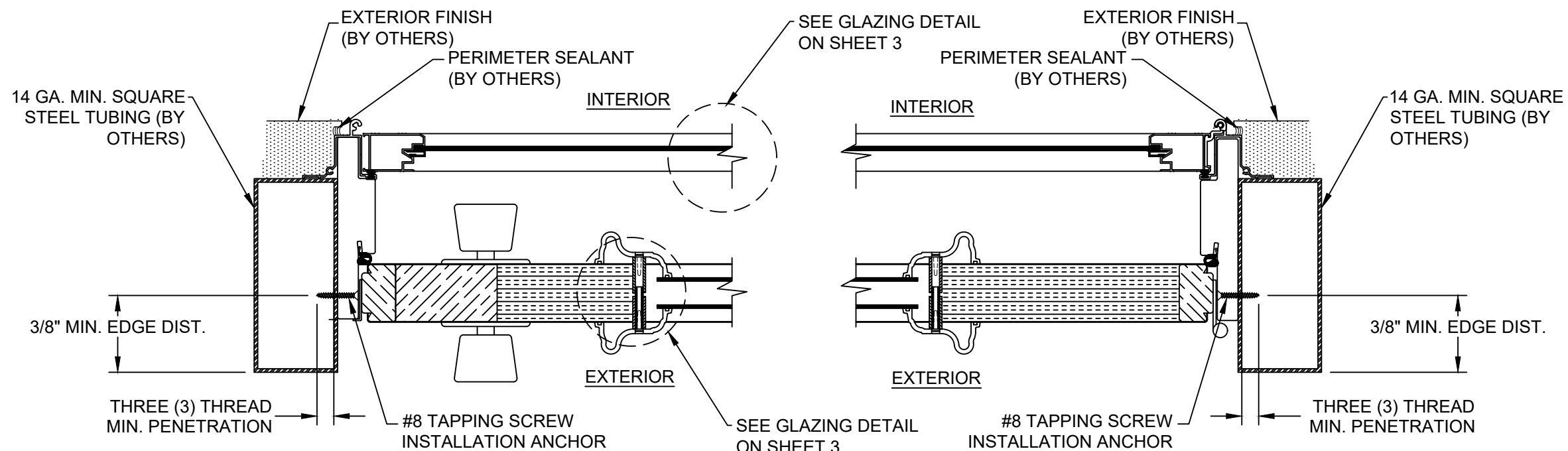
PREPARED BY: TJH
DATE: 02/29/12
SCALE: N.T.S.
DRAWING NO: ELIX0060
REV: B
SHEET: 3 OF 4

Robert J. Amoruso, P.E.
FL P.E. No. 49752



E HORIZONTAL SECTION
WOOD FRAME SUBSTRATE

F HORIZONTAL SECTION
WOOD FRAME SUBSTRATE



G HORIZONTAL SECTION
STEEL TUBING SUBSTRATE

H HORIZONTAL SECTION
STEEL TUBING SUBSTRATE

PROJECT NUMBER: 419-0903

ELIXIR DOOR & METALS CO.
1215 POPE DRIVE
DOUGLAS, GEORGIA 31533

TITLE: MODEL 7500 NON-IMPACT INSWING
VINYL LAMINATED STEEL DOOR W/STORM DOOR
HORIZONTAL CROSS SECTIONS

PREPARED BY: TJH
DATE: 02/29/12
SCALE: N.T.S.
DRAWING NO: ELIX0060
REV: B
SHEET: 4 OF 4

PTC PRODUCT DESIGN GROUP, LLC
PO BOX 520775
LONGWOOD, FLORIDA 32752
Phone: 321.690.1788
Fax: 321.690.1789
Email: info@ptc-corp.com
FPE CA NO 23585

Robert J. Amoruso, P.E.
FL P.E. No. 49752