

Examples of Stormwater Infrastructure

Single area inlet

- A receptacle designed to collect surface or stormwater from an open area

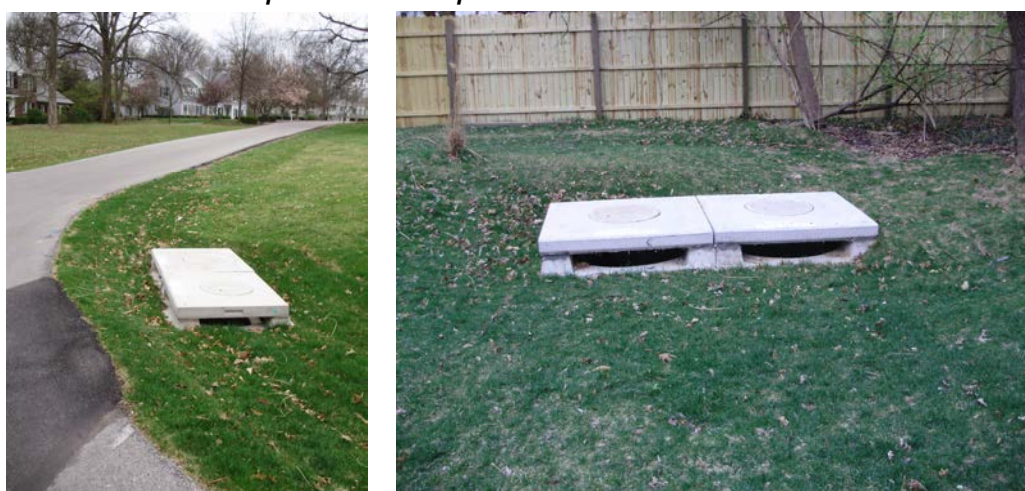
An example single area inlet during construction An example single area inlet completed



Double area inlet

- Same as above (single area inlet) but can collect more water at a time

Examples of completed double area inlets



Single curb inlet

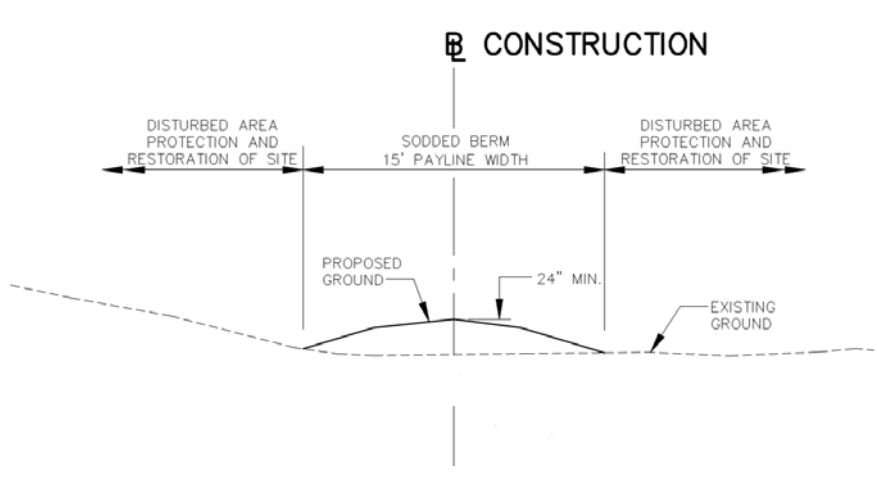
- An inlet built at the curbline of a street to admit gutter flow into the stormwater system

Single curb inlet with asphalt curbs Single curb inlet with concrete vertical curbs Single curb inlet with concrete mountable curbs



Berm

- A barrier constructed of compacted earth that restricts or directs the flow of water
- Berms and swales are often used together



Trench drain

- Grated drain that goes across a road or driveway

Typically one end of a trench drain has a manhole, as seen in the left picture



Manhole

- An opening in a sewer which allows access to the pipe underneath

Manhole (in foreground) Manhole in street



Double curb inlet

- Same as above (single curb inlet) but can collect more water at a time



Detention

- Many types of detention are available. Stormwater detention can reduce flooding, reduce erosion, and improve water quality. It can be above or below ground.



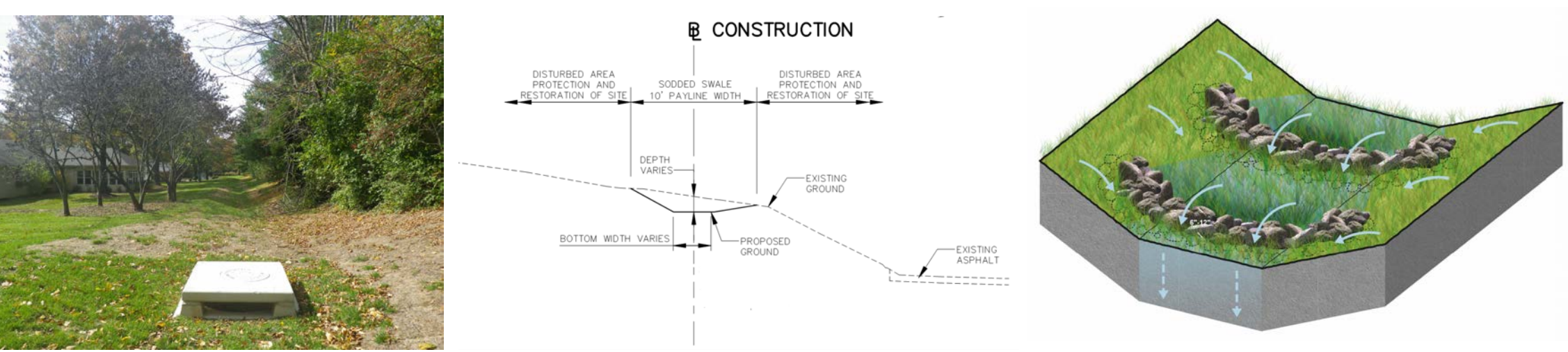
Flared end section (outfall)

- A type of outfall that releases stormwater onto the ground surface



Swale

- A broad, shallow, and gently sloped channel for conveying stormwater runoff. It may be lined with vegetation, compost, riprap, or other material. Berms and swales are often used together.



Types of curbs



Construction photos

- Construction techniques, schedule, and disturbance vary depending on site conditions and improvement type



Grated inlet

- An area inlet in an open area with a grate top



Grated street inlet

- An inlet built at the curbline of a street, but has a grated opening

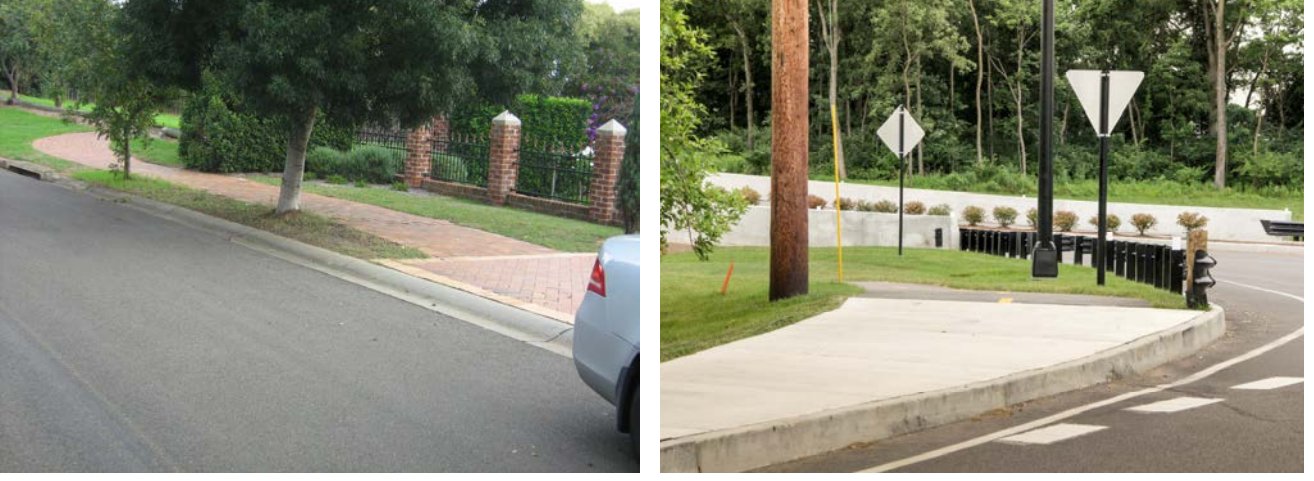


Regrade road

- Regrading the road can help direct street runoff to curb inlets or swales.



After placing pipe under an existing street



Yard restoration after construction

