








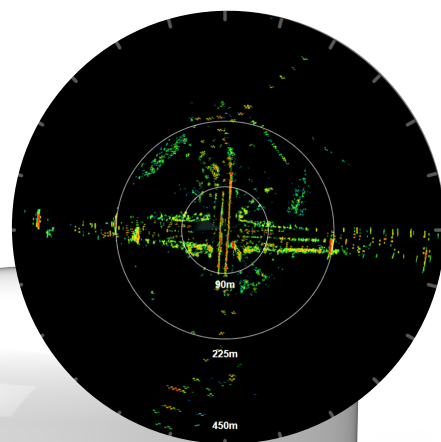
# RS24

## HIGH RESOLUTION SHORT RANGE RADAR




RS24 is a **high speed, high-resolution FMCW K-band** dome radar. K-band has a inherently higher resolution than the S or X bands, typically used for marine radar. Its short range capability makes it the preferred choice for situational awareness and hazard detection in **densely populated marine environments**. It can output radar images both to RS24 Dashboard and to third-party applications.

### BENEFITS

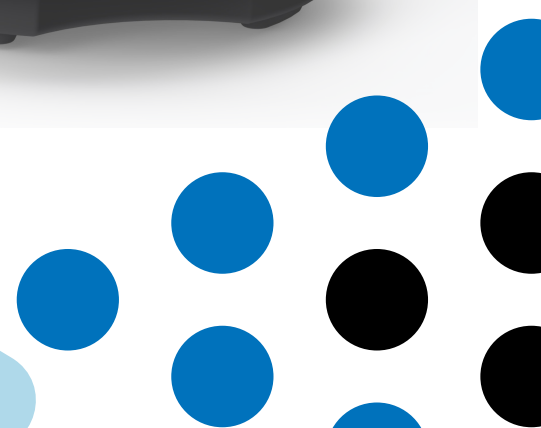
-  High-resolution situational awareness
-  Navigate with greater precision through busy waterways
-  Faster than any other radar with 60 RPM refresh rate
-  Identify and locate small crafts or navigation buoys
-  No radar blind spot



### APPLICATIONS

-  Autonomous / remote vessels
-  Passenger vessels and super yachts
-  Military and search and rescue vessels

Great for safe manoeuvring in harbours, fjords and locks.



# RS24 SPECIFICATIONS

Sensor Details	
Rotation	60rpm
Power	86-264VAC 1A RMS
Control Interface	Ethernet 100Base-T Gigabit Ethernet or faster networking equipment recommended
Image Format	ASTERIX
Operating Temperature	-25°C to +55°C
Ingress Protection	IPX6
SOLAS	System not certified or compliance with IMO SOLAS Ch.V
Target Detection	Automatic or by manual selection
Vertical Beam Height	+/- 5.5°

Radio Frequency Details	
Transceiver Type	Ultra-Linear FMCW
Frequency Band	K-Band ISM 24.05-24.25GHz
Transmit Power Nominal	100mW EIRP
Azimuth Beam Width	< 1.4° (-3dB width)
Elevation Beam Width	5° up and 40° down
Azimuth Side Lobe Suppression (System to two way)	Inside +10° > 25dB Outside +10° > 40 dB
Minimum Range	1m
Maximum Range - 1000m2 Target	1500m (maximum dependent upon Radar Cross Section)
Range Resolution	75cm

Computer Requirements	
Processor	Intel 6th Gen CPU or newer / AMD equivalent
Operating System	Windows 7 or newer
RAM	4Gb RAM or greater
Hard Drive Space	250 Gb or greater
Monitor Resolution	1280 * 1024 or higher (Full HD recommended)

Sensor Certification	
EMC	EN IEC 60945:2002
Safety	EN IEC 60945:2002
Environmental	EN IEC 60945:2002
Ingress Protection Rating	IP66
Equipment Marking	CE

Sensor Weight & Dimensions	
Diameter	500mm
Height	400mm
Weight	17kg



"RS24" is a registered trademark of Guidance Marine Ltd. All other brand or product names are trademarks or registered trademarks of their respective companies or organisations.

**Guidance Marine Ltd**  
[www.guidancemarine.com](http://www.guidancemarine.com)  
[info@guidancemarine.com](mailto:info@guidancemarine.com)

5 Tiber Way, Meridian Business Park, Leicester,  
 LE19 1QP, UK