








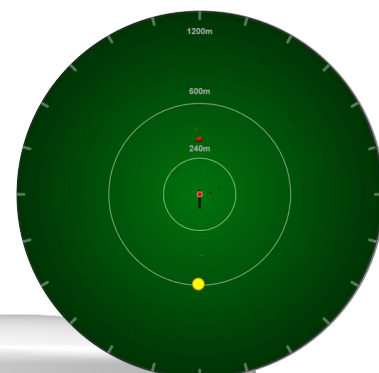
RADASCAN VIEW

SITUATIONAL AWARENESS FOR DP OPERATIONS




RadaScan View is the **only radar-based DP reference sensor** that also delivers **real-time situational awareness**. The sensor determines vessel position and heading by measuring the range and bearing of one or more **microwave targets**. Based on radar technology, it overcomes many of the limitations associated with DGPS, traditional laser, acoustic and taut-wire systems.

BENEFITS

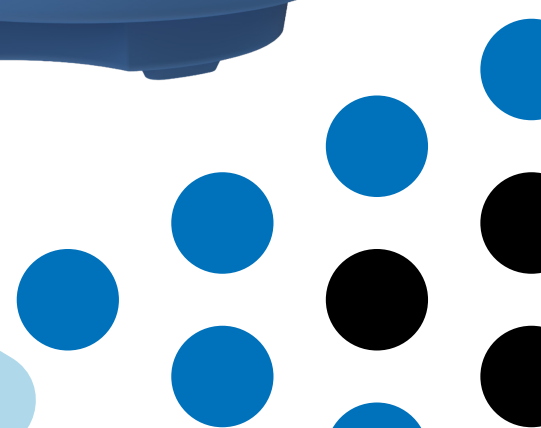
-  Suitable for 500m zone
-  Positioning, radar dashboard with situational awareness
-  Confirms RadaScan responder locations on the Asset
-  Provides an early warning against the inadvertent moving of responders
-  Low power enabling 24/7 radar imaging



APPLICATIONS

-  Platform, offshore and supply vessel operations
-  Wind farm service operation vessels
-  Dive and ROV support & crew boats

Also suitable for **DP applications** with mobile structures such as **track and ship follow** and **shuttle tanker loading**.



RADASCAN VIEW SPECIFICATIONS

Sensor Details

Transceiver Type	Frequency Modulated Continuous Wave (FMCW)
Frequency Band	9.2 to 9.3 GHz
Maximum Power Output	1W
Maximum Operating Range*	600m
Minimum Operating Range	10m
Range Repeatability**	0.25m (1 σ) up to 600m
Angular Repeatability**	0.2° (1 σ) up to 600m
Operating Field Of View	360°
Target Detection	Automatic
Vertical Beam Height	22°
Multiple Target Capability	Up to 4

Sensor Weight & Dimensions

Diameter	500mm
Height	400mm
Weight	21kg

Flight Case Weight & Dimensions

System Dimensions	620 x 620 x 730 mm
System Weight	63kg (with typical accessories such as computer, monitor, keyboard and mouse)

Vessel Interface

Sensor Power	100-240VAC 45-65Hz, 5A
Sensor Control	2 c Ethernet 100Base-T
Sensor DP Feed	1 x RS422
Supported DP Systems	Includes Beier Radio, GE Energy (Converteam), Kongsberg, Marine Technologies, Navis, Praxis, Rolls-Royce and Wartsila (L-3)
Sensor Control	Up to 9 control consoles (Master & Slaves)
Sensor Control Protocol	Ethernet TCP/IP
Supported DP Telegram Formats	Includes MDL single/multi-target and NMEA 0183 to IEC 61162-1:2010(E). Custom formats also available on application.

Environmental

Operating Temperature Range	-25°C to +55° C
Atmospheric Conditions	Operates in fog, heavy rain, snow and ice conditions
Standards Compliance	CE Certified, EN 60945, FCC Approved, IMO Resolution A962 (23) 'GREEN PASSPORT'
Ingress Protection Rating	IP66
RF Immunity	Resistant to S and X band Radar when installed as recommended



"RadaScan" is a registered trademark of Guidance Marine Ltd. All other brand or product names are trademarks or registered trademarks of their respective companies or organisations.

Guidance Marine Ltd
www.guidancemarine.com
info@guidancemarine.com

5 Tiber Way, Meridian Business Park, Leicester,
 LE19 1QP, UK