






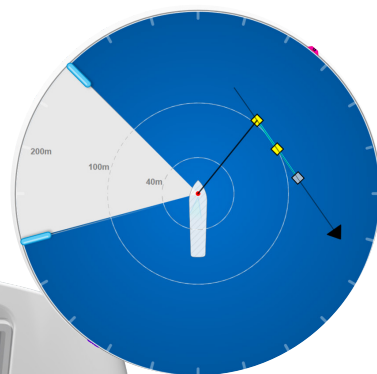
# CYSCAN AS

LONGEST RANGE  
LASER POSITION  
REFERENCE SENSOR




CyScan AS® | a high-performance **local position reference sensor** specifically engineered for marine Dynamic Positioning applications. Absolute Signature (AS) resolves long-standing, common industry challenges by providing an improved performance during target identification, acquisition and tracking.

## BENEFITS

-  Positively identifies AS targets
-  Longest range DP laser sensor on the market today
-  Can add additional targets to a multi-target session without interruption
-  Field proven false target reflection rejection
-  Plug and play legacy and competitor upgrade available



## APPLICATIONS

-  Platform, offshore and supply vessel operations
-  Wind farm service operation vessels
-  Dive and ROV support & crew boats

CyScan AS is also suitable for **DP applications** with mobile structures such as **track and ship follow** and **shuttle tanker loading**.



# CYSCAN SPECIFICATIONS

Sensor Details	
Laser Source	Pulsed laser diodes
Laser Classification	Class 1M
Operating Range (Nominal)	10-2500m (dependent on target size and atmospheric conditions)
Range Resolution	0.01m (DP Feed dependent)
Range Noise	50mm*
Bearing Noise	0.2 mrad
Beam Shape	12" vertical   0.13° horizontal
Total Vertical Coverage	52°
Wave Motion Compensation	Single axis gimbal   +/-20° absolute range
Maximum Detectable Targets	30
Maximum Trackable Targets	9

Target Details	
Typical Range	1.9, cylindrical 10m to 400m Prism 10m to 2500m (target type/ absolute signature technology dependent)

Levelling Optics	
Active Axis	Single axis with automatic dynamic stepper control
Tilt Compensation	-20° to +20° roll and pitch (combined)
Sensors	3 axis solid state gyro and accelerometers 2 axis inclinometer
Total Vertical Angular Coverage (typical)	52° (mechanical + optical)
Wave Motion Compensation	1.5° for 5 second wave period

Flight Case Weight & Measurements		Sensor Weight & Dimensions	
System Dimensions	680 x 570 x 910mm	Width	405mm
System Weight	ca. 78kg (typical accessories)	Depth	407mm
		Height	565mm
		Weight	28kg

Vessel Interface	
Sensor Power	85-264VAC   max 100W
Sensor Control Electrical Interface	Ethernet 100Base-T or Serial RS422
Sensor Control Software	Up to 10 simultaneous consoles (Ethernet)   Single control console serial connected sensors
Sensor DP Feed	2 x RS422 (Ethernet controlled sensors) or 1 x RS422 (serial connected sensor)
Supported DP Telegram Formats	NMEA0183R   NMEA0183P   ASCII17   MDL Standard
Custom DP Telegrams	BCD   Artemis   Marine Technologies   Rolls Royce

Environmental	
Operating Temperature Range	Min: - 25°C   Max: 55°C
Ingress Protection Rating	IP66 rated
Standard Compliance	EN60945   IEC670825



"CyScan" is a registered trademark of Guidance Marine Ltd. All other brand or product names are trademarks or registered trademarks of their respective companies or organisations.

**Guidance Marine Ltd**  
[www.guidancemarine.com](http://www.guidancemarine.com)  
[info@guidancemarine.com](mailto:info@guidancemarine.com)

5 Tiber Way, Meridian Business Park, Leicester, LE19 1QP, UK