



Green Leaf Lab®

251 Lathrop Way Suites D&E Sacramento, CA 95815
916-924-5227 / www.greenleaflabs.com
License#: C8-0000078-LIC

Quality Control Testing Official Report

Distributor

WNC Distribution
PO Box 17865
Asheville, NC 28816

Peach Rings THCA Rosin

Test RFID:

Source RFID: na

Lab Sample ID: S5A0242-07

Source Batch ID: na

Matrix: Inhalable Concentrate - weight

Batch Size: na

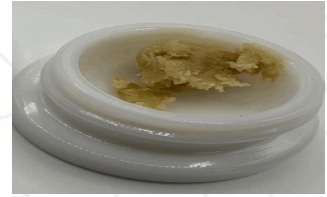
Date Sampled: 01/22/25

Date Received: 01/23/25

Harvest/Processing Date: na

Sample Size: 1 unit

Product Density: na



Results at a Glance

Overall Batch : **PASS**

Terpene Analysis Add On : **PASS**

Taylor Pearce
CA Lab Director - 1/27/2025

Page 1 of 3

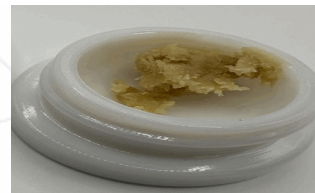
LQC samples were performed and met the prescribed acceptance criteria in 4 CCR section 15730; data available upon request. These results relate only to the sample included on this report. The report may not be reproduced except in full, without the written permission of Green Leaf Lab. The validity of results can be affected by the client supplied information.

This is for informational testing and is not compliance testing. The sample has been provided by the customer and lab results apply to the sample received



Distributor

WNC Distribution
PO Box 17865
Asheville, NC 28816



Peach Rings THCA Rosin

Test RFID:

Source RFID: na

Lab Sample ID: S5A0242-07

Source Batch ID: na

Matrix: Inhalable Concentrate - weight

Batch Size: na

Sample Size: 1 unit

Date Sampled: 01/22/25

Date Received: 01/23/25

Harvest/Processing Date: na

Product Density: na

Terpene Analysis by GCMS

Date/Time Extracted: 01/23/25 09:03

Analysis Method/SOP: T-001

Date/Time Analyzed: 01/24/25 21:57

Monoterpenes	%	mg/g	Monoterpenes	%	mg/g
3-Carene	< LOQ	< LOQ	alpha-Cedrene	< LOQ	< LOQ
alpha-Pinene	0.1560	1.56	alpha-Terpinene	< LOQ	< LOQ
beta-Myrcene	0.2843	2.843	beta-Pinene	0.3020	3.02
Borneol	< LOQ	< LOQ	Camphene	0.0325	0.325
Camphor	< LOQ	< LOQ	Farnesol isomer I	< LOQ	< LOQ
Endo-fenchyl alcohol	0.1861	1.861	Eucalyptol	< LOQ	< LOQ
Fenchone	< LOQ	< LOQ	gamma-Terpinene	< LOQ	< LOQ
Geranyl acetate	< LOQ	< LOQ	Hexahydrothymol	< LOQ	< LOQ
Isoborneol	< LOQ	< LOQ	Isopulegol	< LOQ	< LOQ
Limonene	1.2753	12.753	Linalool	0.3243	3.243
Nerol	< LOQ	< LOQ	Ocimene	< LOQ	< LOQ
Ocimene isomer I	< LOQ	< LOQ	Ocimene isomer II	< LOQ	< LOQ
p-Mentha-1,5-diene	< LOQ	< LOQ	Pulegone	< LOQ	< LOQ
Sabinene	< LOQ	< LOQ	Sabinene hydrate	< LOQ	< LOQ
Terpineol	0.1115	1.115	Terpinolene	< LOQ	< LOQ
Sesquiterpenes	%	mg/g	Sesquiterpenes	%	mg/g
alpha-Humulene	0.7123	7.123	beta-Caryophyllene	1.5109	15.109
cis-Nerolidol	< LOQ	< LOQ	Guaiol	0.2370	2.37
trans-Nerolidol	0.0608	0.608	Valencene	< LOQ	< LOQ
Total Terpenes	5.4663	54.663			

<LOQ - Results below the Limit of Quantitation

Taylor Pearce
CA Lab Director - 1/27/2025

Page 2 of 3



Distributor

WNC Distribution
PO Box 17865
Asheville, NC 28816

Peach Rings THCA Rosin

Test RFID:

Source RFID: na

Lab Sample ID: S5A0242-07

Source Batch ID: na

Matrix: Inhalable Concentrate - weight

Batch Size: na

Date Sampled: 01/22/25

Date Received: 01/23/25

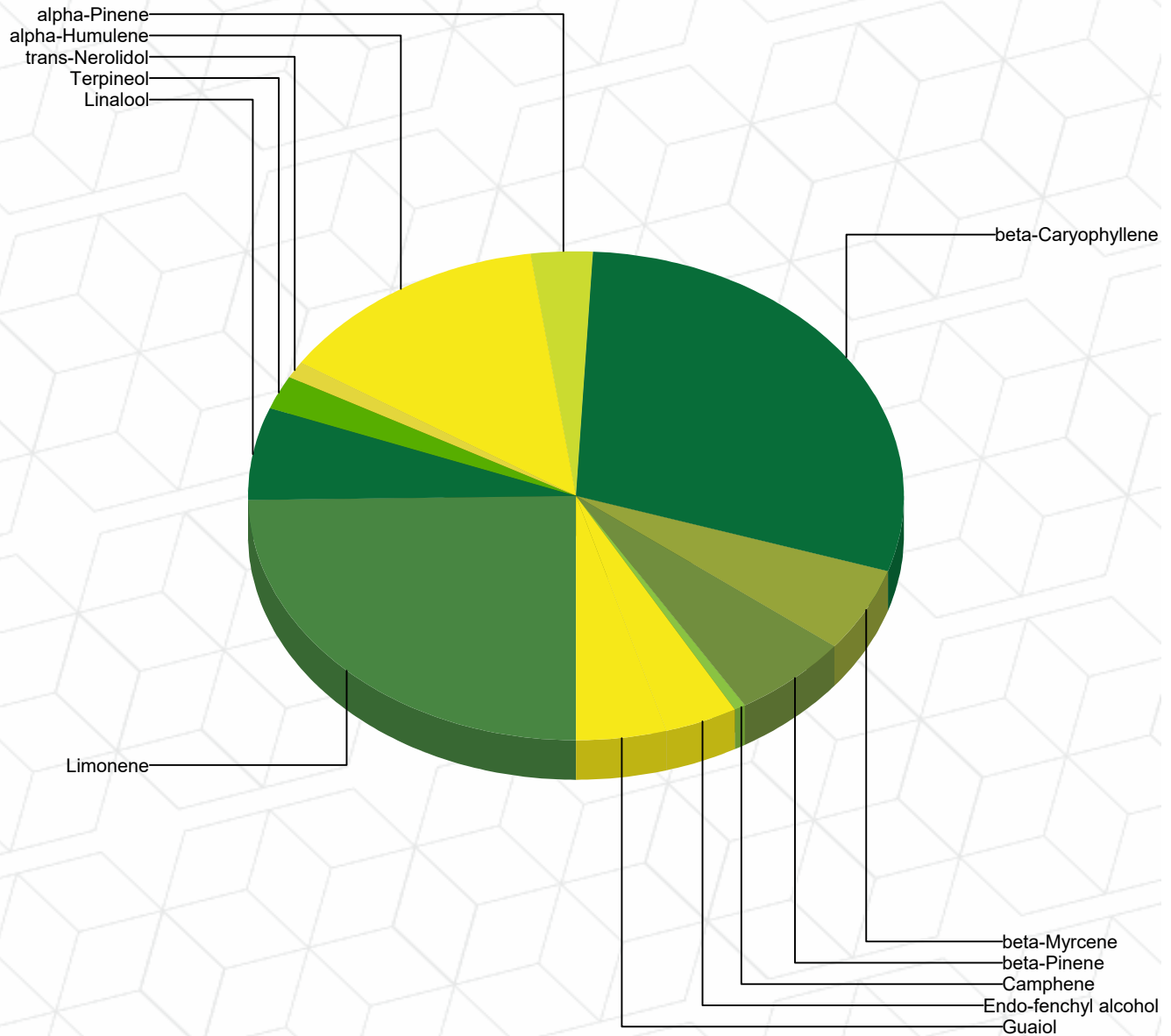
Harvest/Processing Date: na

Sample Size: 1 unit

Product Density: na



Terpene Profile



Percentage of Total Terpenes Identified

Taylor Pearce
CA Lab Director - 1/27/2025



Peach Ringz THCA Rosin

Sample ID: G4G0057-05

Matrix: Hemp Extracts & Concentrates

Test ID: 5034592

Source ID:

Date Sampled: 07/09/24

Date Accepted: 07/09/24

WNC CBD

info@wnc-cbd.com

Results at a Glance

Total THC : 75.97 %

Total CBD : <LOQ (0.0431%) %



Peach Ringz THCA Rosin

Sample ID: G4G0057-05

Matrix: Hemp Extracts & Concentrates

Test ID: 5034592

Source ID:

Date Sampled: 07/09/24

Date Accepted: 07/09/24

WNC CBD

info@wnc-cbd.com

Potency Analysis

Date/Time Extracted: 07/11/24 09:54

Analysis Method/SOP: 215

Batch Identification: 2428036

Cannabinoids	LOQ (%)	% by Wt.	mg/g	Cannabinoids Profile
Total THC	0.0005	75.97	759.7	<p>0.1</p> <p>85.0</p> <p> ■ THCA 85.0 ■ delta 9-THC 0.1 Total: 85.12 </p>
Total CBD	0.0431	< LOQ	< LOQ	
THCA	0.0005	84.98	849.8	
delta 9-THC	0.0005	0.144	0.014	
delta 8-THC	0.0934	< LOQ	< LOQ	
THCV	0.1052	< LOQ	< LOQ	
THCVA	0.0392	< LOQ	< LOQ	
CBD	0.0005	< LOQ	< LOQ	
CBDA	0.0005	< LOQ	< LOQ	
CBDV	0.1040	< LOQ	< LOQ	
CBDVA	0.0341	< LOQ	< LOQ	
CBN	0.0622	< LOQ	< LOQ	
CBG	0.0164	< LOQ	< LOQ	
CBGA	0.0164	< LOQ	< LOQ	
CBC	0.0186	< LOQ	< LOQ	
Total Cannabinoids		85.12	851.2	

Total THC = delta 9-THC + (THCA * 0.877)

Total CBD = CBD + (CBDA * 0.877)

Total CBG = CBG + (CBGA * 0.878)

LOQ=Limit of Quantification, the lowest measurable concentration of an analyte.

THCA, delta 9-THC, delta 8-THC, CBDA and CBD are accredited by TNI 2016 and ISO 17025



**ISO 17025
ACCREDITED
LABORATORY**

Nolan Mundie
Lab Director - 7/16/2024

These results relate only to the sample included on this report. The report may not be reproduced except in full, without the written permission of Green Leaf Lab.

This is for informational testing and is not compliance testing. Lab results apply to the sample as received.



Quality Control Potency

Batch: 2428036 - 215-Concentrates

Blank(2428036-BLK1)							
Analyte	Result	LOQ	Units	%Recovery Limits	Extracted	Analyzed	Notes
THCA	< LOQ	0.0005	%		07/11/24 09:54	07/11/24 20:57	
delta 9-THC	< LOQ	0.0005	%		07/11/24 09:54	07/11/24 20:57	
delta 8-THC	< LOQ	0.0934	%		07/11/24 09:54	07/11/24 20:57	
THCV	< LOQ	0.1052	%		07/11/24 09:54	07/11/24 20:57	
THCVA	< LOQ	0.0392	%		07/11/24 09:54	07/11/24 20:57	
CBD	< LOQ	0.0005	%		07/11/24 09:54	07/11/24 20:57	
CBDA	< LOQ	0.0005	%		07/11/24 09:54	07/11/24 20:57	
CBDV	< LOQ	0.1040	%		07/11/24 09:54	07/11/24 20:57	
CBDVA	< LOQ	0.0341	%		07/11/24 09:54	07/11/24 20:57	
CBN	< LOQ	0.0622	%		07/11/24 09:54	07/11/24 20:57	
CBG	< LOQ	0.0164	%		07/11/24 09:54	07/11/24 20:57	
CBGA	< LOQ	0.0164	%		07/11/24 09:54	07/11/24 20:57	
CBC	< LOQ	0.0186	%		07/11/24 09:54	07/11/24 20:57	

Reference(2428036-SRM1)							
Analyte	% Recovery	LOQ	Units	%Recovery Limits	Extracted	Analyzed	Notes
THCA	96.7	0.00005	%	90-110	07/11/24 09:54	07/11/24 21:25	
delta 9-THC	94.9	0.00005	%	90-110	07/11/24 09:54	07/11/24 21:25	
delta 8-THC	97.0	0.0088	%	90-110	07/11/24 09:54	07/11/24 21:25	
CBD	94.4	0.00005	%	90-110	07/11/24 09:54	07/11/24 21:25	
CBDA	95.6	0.00005	%	90-110	07/11/24 09:54	07/11/24 21:25	



Notes and Definitions

Regulatory Compliance samples were collected onsite at facility according to SOP-402 and SOP-403 and following Sampling Plan FN117. Quality Control samples were tested as received.
Results do not include uncertainty of measurements. Available upon request.

ATM	Non-cannabis matrix related interference or suppression of Internal standard
BLI	Baseline Interference - Cannabinoid peak interference in chromatographic baseline affecting QC recovery .
BLK	Analyte detected in method blank, but not associated samples.
BSH	Blank Spike High - Blank Spike recovery above method limit. no detections in samples.
BSL	Blank Spike Low - Blank Spike recovery below lower method limit, analyte chromatography reviewed
C	manually for all samples.
CBD	Interference due to co-elution
CV1	CBD matrix interference on GC Pest chromatography
CV2	CCV was above acceptance criteria, Non-detect samples are considered acceptable.
INF	CCV was below acceptance criteria, sample still exceeds regulatory limit.
ISH	One or more QC falls outside acceptance criteria. Data entered into LIMS for informational purposes only.
ISL	Internal Standard concentration is above acceptance criteria.
MSH	Internal Standard concentration is below acceptance criteria.
MSI	Matrix Spike High - Matrix Spike recovery above method limits.
MSL	Matrix Spike Interference - Matrix spike source sample contains analyte hit above calibration affecting
TPP	recovery accuracy in Matrix Spike.
U	Matrix Spike Low - Matrix Spike recovery below lower method limit, analyte chromatography reviewed
	manually for all samples.
	Internal Standard concentration outside control limit due to matrix interference