



Launch Fast. Sleep Well.

Integrated Apparel Manufacturing



Who we are

Your Low-Risk Upgrade to Global Manufacturing

At **PFD Style**, we are the international face of **Pakiza Knit & Woven**, one of Bangladesh's most advanced vertically integrated textile and apparel groups. Headquartered in Canada with offices in Germany, the UK, China, Pakistan, and Bangladesh, we provide our customers with something rare in apparel: **local partnership, global reach, and direct factory execution.**

With over 120,000 spindles, 20 tons per day of knitting, 90 tons per day of dyeing and finishing, and 100+ sewing lines delivering 4.5 to 5 million pieces per month, Pakiza Knit & Woven brings unmatched scale and technical capability. From spinning to weaving, knitting, dyeing, washing, printing, embroidery, and final garments, every stage of production is under our direct control, ensuring **quality, speed, and accountability.**

We are not middlemen; we are the manufacturers. PFD Style represents the combined strength of our Canadian governance and our South Asian manufacturing ecosystem. This model allows our customers to **launch faster, reduce risk, and sleep well knowing their supply chain is secure.**



Our Core Identity

- **Canada-based governance:** Transparent contracts, North American compliance standards, and direct accountability.
- **Bangladesh-integrated capacity:** Vertically integrated operations with 7.5 million units monthly capacity across knit, woven, denim, and specialty categories.
- **Design-driven sourcing:** In-house design studio and 3D modeling for rapid prototyping and fewer physical samples.
- **Sustainability at scale:** Certifications including Sedex, ISO, RSC, BSCI, GOTS, Oeko-Tex, and Global Recycled Standard.



Why This Matters

Global apparel sourcing is complex, but PFD simplifies it. We anchor every decision around three promises:

- **Time Compression:** Faster sample to purchase order cycles through integrated design and manufacturing.
- **Risk Reduction:** End-to-end compliance, audited facilities, and full visibility.
- **Ease of Doing Business:** A local partner in Canada aligned with your brand's expectations, backed by one of South Asia's most advanced manufacturing ecosystems.

PFD Style is more than a sourcing partner; we are the manufacturer behind your supply chain and a platform for profitable, sustainable growth in apparel.

The PAKIZA GROUP story



Chairman's Message
Bismillahir Rahmanir Rahim
Assalamu Alaikum

It is with great pleasure that I welcome you to Pakiza Group. Since our journey which began in 1982, we have been working with full commitment and endeavor that led us to become the largest manufacturer of sharees, Printed Fabrics, Lungees, Bed sheets, Shirting and Suiting locally in Bangla- desh. Like most of the companies, we faced a challenging business environment over the past years during the global economical turmoil. We have faced these challenges with great diligence and have succeeded in continuing our significant contribution to the economy of Bangladesh.

Since 2001 we have been supplying knit yarns for garment export. In 2014 we have started our new venture, Pakiza Knit Composite Ltd., a fully export knit garments manufacturing factory. Through our performance and feedback from our clients we have a positive sign that our export will grow over the years yet to come. To support our export, we are expanding vertically and horizontally.

1982

Mr. Rafiqul Islam Khan, Chairman Pakiza Group starts Pakiza, a small retail store selling Sharees and printed fabrics.

1984

Pakiza Dyeing & Printing Industries Ltd., a local dyeing and printing factory, starts production. The factory at present dyes, prints and finishes sharees, salwar kamiz, shirting and printed fabrics.

1991

High public demand leads the chairman of Pakiza Group to establishes a second local dyeing, printing and finishing factory named **Pakiza Textiles Ltd.** At present the company is the largest local dyeing, printing and finishing factory in Bangladesh.

1992

Garden Textile Mills (Pvt) Ltd., Pakiza's local woven fabric producing factory, opens. It has 274 looms at present and now produces 6 million yards of grey woven fabric for Sharees, printed fabrics, 3 piece salwar kamiz etc. every year.

1995

Chairman of Pakiza Group becomes director of **Phoenix Finance**

1997

Pakiza Spinning Mills Ltd. starts its production. This is Pakiza's first spinning mil. It is the most modern spinning mill of its time and produces 5000 tons yarn every year for both knitted and woven products.

2000

Mr. Rafiqul Islam Khan becomes director of **CityBank™**.

Pakiza Groups chairman becomes the director of **Phoenix Insurance Company Ltd.**, where in 2012 he retired from his directorship.

2001

Following the success of the first spinning mill, Pakiza launches its second spinning, **Pakiza Cotton Spinning Mills (Pvt) Ltd.** It has the capacity to produce 40 tons yarns per day for export knit garments.

2007

Chairman becomes director of **Phoenix Securities Limited.**

2013

Pakiza Knit Composite Ltd was established.

Pakiza Apparels Composite Ltd was established.

Pakiza Woven Composite Ltd was established.

Group



About US

Pakiza Group, a fabric-manufacturing giant, was successful in catching the early winds of the favorable enterprise in world-class textiles in Bangladesh and became a household name in this sector with its quarter century experience and enterprise. Established in 1982, Pakiza Group thrives with its bipolar segmentation of a huge range of textiles at home front. The range includes finest Sharees, Printed Fabrics, Lungees, Bed sheets, Shirting and Suiting. The growth of our enterprise that drove the logo of Pakiza to millions of people at home, lends a big tribute to the latest technology that we are prone to commission and our strictest compliance to the global textile production practices and environmental laws.

In the flow of gradual development, Pakiza Group has introduced its new compliant composite knit garment factory, "Pakiza Knit Composite Ltd". Pakiza Knit Composite Ltd (PKCL) has all the latest state of the art machineries and facilities, including ERP software for HR, accounts and production, Wi-Fi facilities, instant sampling, R&D sections, etc.



At A Glance

The scale to deliver. The systems to guarantee.

PFD Style leads with one of Bangladesh's largest vertically integrated operations. Beyond this, our long-standing trusted partners expand our offering even further, giving our clients access to specialized categories, additional volumes, and premium outerwear. Together, this creates one of the most comprehensive sourcing ecosystems in South Asia.

Our Global Footprint

- **Headquarters:** Canada
- **Manufacturing Hub:** Bangladesh
- **Regional Presence:** UK, Germany, China, Pakistan



Our Manufacturing Capacity

Section	Capacity	Key Products & Processes
Spinning	120,000 spindles, 70tons per day	Cotton, CVC, PC, melange yarn, counts from 20 Ne to 80 Ne
Knitting	20 tons per day plus additional partner capacity	Single Jersey, Rib, Jacquard, Lycra, Terry, Fleece, Bubble Knit, synthetic and cotton fabrics
Dyeing & Finishing	90 tons per day bulk, 1 ton per day sample	Cotton and synthetic dyeing, garment dyeing, fluorescent and pigment dyeing, washing
RMG (Garments)	100+ sewing lines, 5 to 8 million pcs per month (core). Expanded to over 12 million pcs per month with partners	T-shirts, Polos, Jackets, Joggers, Dresses, Activewear, Denim, Intimates, Kidswear, Women's wear
Printing	2.0 million pcs per month garment, 2.0 million pcs per month label	Rubber, Pigment, Discharge, Plastisol, High Density, Foil, Sublimation, Heat seal
All-Over Printing	25 tons per day	Rotary, flat-bed, glitter, burnout, pigment, discharge
Embroidery	1.0 million pcs per month plus partner capacity	Sequin, Chenille, Satin, advanced decorative embroide
Yarn Dyeing	15 tons per day	Cotton yarn, synthetic yarn, sewing thread dyeing
Woven	600,000 pcs per month (core). Additional partner capacity for 2 million plus pcs per month	Denim bottoms, chinos, cargo, workwear, winter jackets, work ja
Weaving	5.2 million meters per month (group level)	Twill, poplin, denim, viscose, canvas, stretch fabrics
Specialized Outerwear	Partner-enabled, 3 to 5 million pcs per year	Seam-sealed jackets, ski wear, padded and down jackets, technical winter outerwear

Our People and Infrastructure

- Workforce: Over 11,000 directly, expanded to 15,000 plus with trusted partner ecosystem
- Testing & QA: Full in-house labs with AQL 2.5 and 1.5 standards, 100 percent inspection for Japanese buyers
- Sustainability: Effluent treatment capacity 3,600 m³ per day, water recycling, solar energy projects, rainwater harvesting

Scale matters, but control matters more.

By combining our vertically integrated core with extended partner capacity, we deliver flexibility, volume, and specialized expertise under the same governance, quality systems, and accountability.

Product Spectrum

From everyday basics to complex outerwear, our spectrum covers the full journey of fashion.



Knits & Core Apparel

Our foundation is high-capacity knit production, powered by integrated spinning, knitting, and finishing. This allows us to deliver high-volume, fast-turnaround categories with uncompromising quality.

- **Menswear:** T-shirts, polos, joggers, cargo pants, chinos, denim jackets, sportswear
- **Womenswear:** Tops, blouses, trousers, leggings, dresses, denim, loungewear
- **Kidswear:** Rompers, t-shirts, shorts, dungarees, jackets

Capacity: 5 to 8 million pieces of Ready-Made Garments per month across men's, women's, kids, and infants.

Scan here to view our
interactive catalog



Wovenwear & Tailored Categories

Our woven division builds on vertical integration and trusted long-term partners, expanding reach into structured apparel and technical segments.

- **Shirts, trousers, and dresses** in poplin, twill, denim, and blended fabrics
- **Workwear and uniforms** for durability and compliance
- **Winter jackets and work jackets** built for warmth and resilience
- **Denim bottoms and chinos** with modern fits and finishes





Intimates & Lifestyle Apparel

Our expertise extends into lifestyle essentials and close-to-skin categories, produced with precision and comfort in mind.

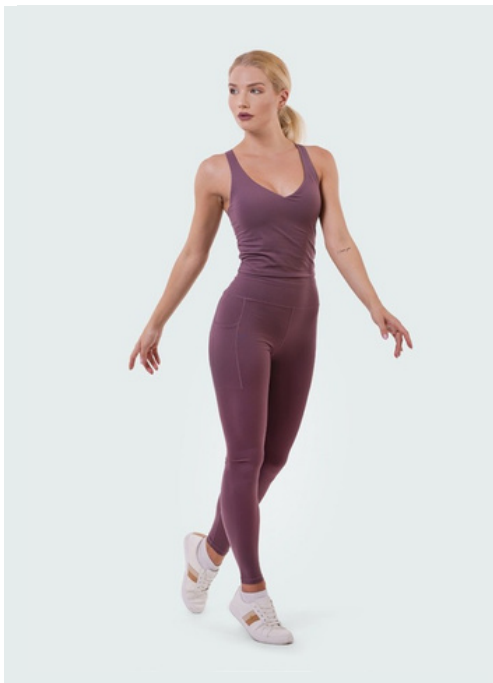
- **Intimates:** Boxers, underwear, singlets, nightwear
- **Loungewear and basics** with high fabric integrity and soft hand feel



Outerwear & Performance Garments

For high-performance apparel, we leverage advanced manufacturing processes and partner capacity to deliver technical products that meet demanding standards.

- Ski jackets, rainwear, seam-sealed garments engineered for weather resistance and technical performance
- Padded and down jackets for warmth and insulation



Specialty Capabilities

Beyond the core, our integrated ecosystem enables value-rich finishing and specialty production.

- **Leatherwear and trims** for premium collections
- **Embroidery and embellishments** with advanced detailing capacity
- **Printing:** 2 million garment prints per month, plus 25 tons per day of all-over printing
- **Yarn dyeing:** 15 tons per day with precision shade control
- **Garment dyeing and washing:** advanced treatments for denim, outerwear, and specialty finishes



Scalable Across Market Segments

Our product spectrum is designed for global brands across fashion, lifestyle, active, and utility categories. From high-volume basics to technical outerwear and premium specialty items, we deliver consistently at scale, backed by governance, sustainability, and trusted execution.

Customers

Trusted by global leaders across fashion, lifestyle, and performance.

Our customer network reflects the strength of our capabilities and the trust we have earned through consistency, quality, and delivery. From luxury fashion labels to global retailers and performance-driven brands, our clients choose us because we simplify complexity and deliver at scale.

Fashion & Lifestyle Brands

We support global fashion houses and lifestyle leaders with design-to-delivery solutions. Clients include:

- Karl Lagerfeld
- Mango
- Reiss
- Lee Cooper
- Cecil
- Ulla Popken
- Joule
- Bonmarché
- Bench
- Camp David
- Next
- Sergent-Major

Sportswear & Performance

Our technical expertise and advanced finishing make us a reliable partner for performance brands. Clients include:

- Kappa France
- FILA
- Converse
- intersport
- Alpine Pro
- Tesla

Retail & Wholesale Giants

We are trusted suppliers to some of the world's largest retailers, helping them deliver value and consistency across their markets. Clients include:

- Aldi
- Lidl
- Woolworth
- Costco
- Kohl's
- Otto
- Zalando
- SanMar (ATC)
- Li & Fung
- F&F
- Rewe
- Pepco

**KARL
LAGERFELD**

MANGO

REISS



CECIL

**ULLA
POPKEN**

joule
Manufacturing Excellence

Bonmarché



BENCH/

CAMP DAVID



**ULLA
POPKEN**

next



KOHL'S

OTTO

REWE



F&F



zalando



Woolworth



INTERSPORT



TESLA

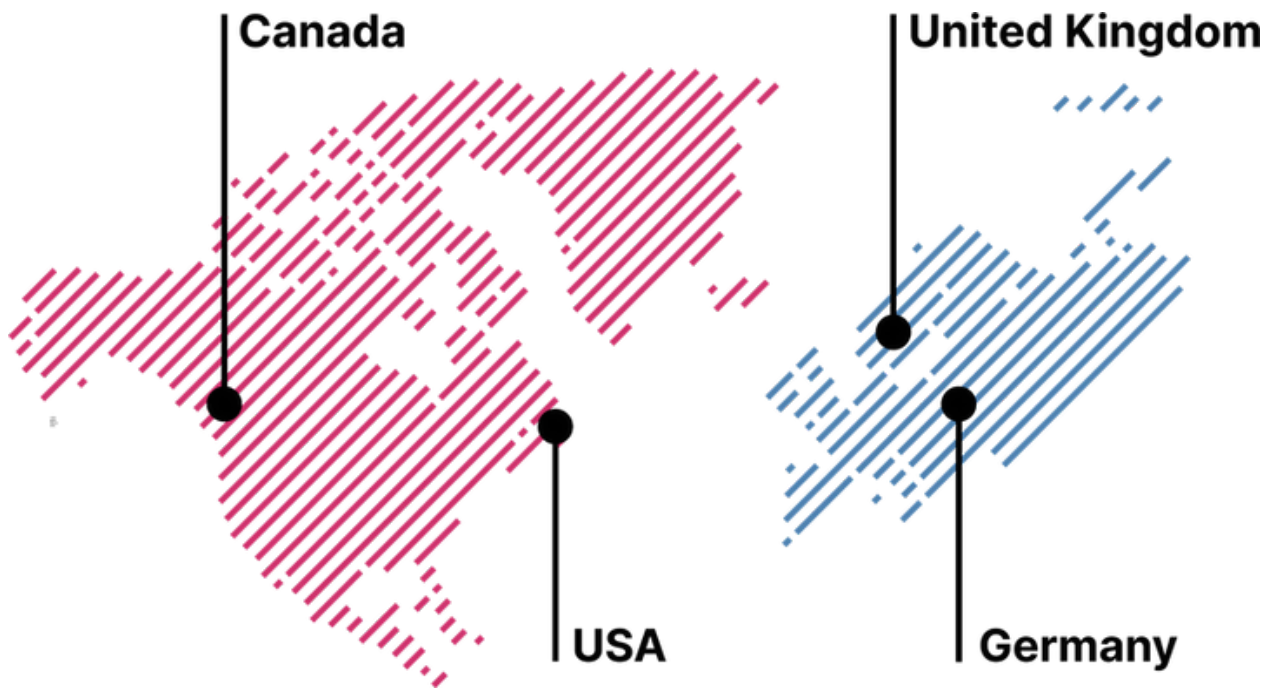


LOTTO



Why They Choose Us

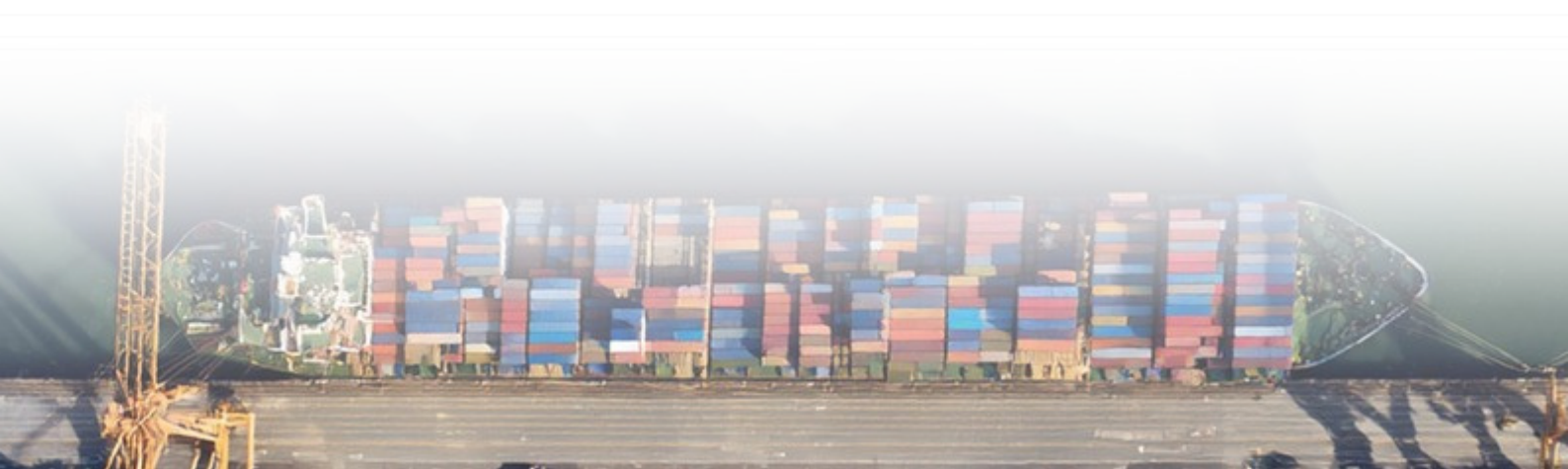
- **Scale and reliability:** Our integrated ecosystem allows us to deliver consistently on both high-volume and specialty programs.
- **End-to-end visibility:** Brands gain full transparency across design, sampling, and production stages.
- **Value creation:** From fashion collections to technical outerwear, we help clients compress lead times, reduce risk, and improve margins.



Global Reach, Local Partnership

Our client base spans Europe, North America, and Asia, giving us a diverse perspective on consumer markets. The consistency of our partnerships proves one thing: whether serving a luxury label, a performance brand, or a global retailer, our customers value the same promise of reliability, accountability, and innovation.

These names represent only part of our customer base. Many more trust us for long-term growth and consistent delivery.



Facilities



Modern, compliant, and built for scale.

Our facilities are more than production sites. They are environments designed for efficiency, compliance, and the wellbeing of the people who power them. Every location under our group and trusted partner network is equipped to deliver world-class apparel manufacturing while adhering to international standards of safety, sustainability, and quality.



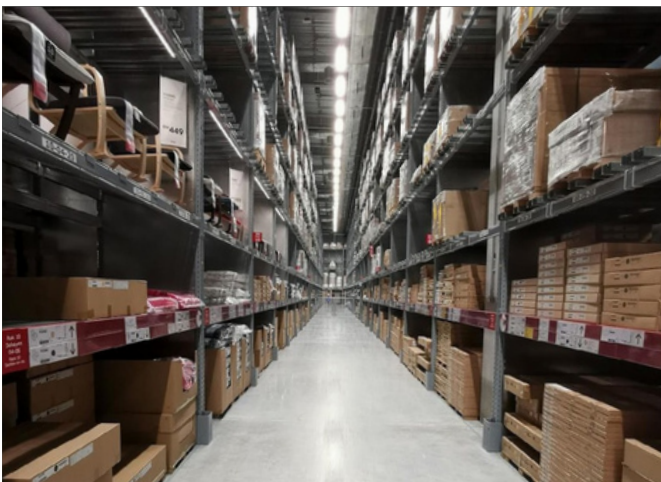
Infrastructure and Space

Our facilities combine modern layouts with robust infrastructure to optimize workflow. Multiple multi-story buildings and dedicated sheds house specialized operations such as knitting, dyeing, sewing, embroidery, and printing. Each site includes expansive production floors, warehousing areas, and inspection zones to streamline the flow from yarn to finished goods.



People & Workforce Support

Behind the machinery is a workforce of over 15,000 skilled associates across our integrated group and trusted partners. To ensure their wellbeing, every facility is equipped with medical centers, daycare services, worker dining areas, and safe recreational spaces. Programs such as worker compliance workshops, and welfare initiatives reinforce a culture of trust and accountability.



Safety & Compliance Systems

We maintain stringent safety protocols aligned with global best practices. Facilities are monitored by CCTV across critical access points, supported by professional security teams, and equipped with comprehensive fire protection systems including alarms, extinguishers, hydrants, and evacuation routes. All employees are trained regularly in fire safety, emergency response, and occupational health practices.

Sustainability in Operations

Our facilities are designed with sustainability at the core. Investments in effluent treatment plants, water recycling, rainwater harvesting, and renewable energy reduce environmental impact. Wastewater treatment systems operate at industrial scale, ensuring compliance with international sustainability frameworks. Continuous monitoring under the Higg Index and OEKO-TEX STeP programs reinforces our commitment to responsible manufacturing.



On-Site Quality Assurance

Every facility includes modern laboratories for fabric and garment testing. Equipment is calibrated to global standards, ensuring shade consistency, fabric performance, and garment durability. Buyer inspection zones are integrated into our facilities, giving customers the confidence of direct verification before shipments leave our premises.



Our facilities are built to inspire confidence. With robust infrastructure, worker-focused programs, safety and sustainability systems, and on-site quality assurance, we offer an environment where scale meets responsibility.



Certifications

Independent validation of trust and compliance.

Our certifications reflect a deep commitment to transparency, responsibility, and quality. Independent third-party audits and globally recognized standards confirm that our operations meet the highest expectations of international buyers. For our customers, these certifications are not just logos on paper. They are evidence of reliable systems, ethical practices, and world-class execution.

Social and Ethical Compliance

We believe that apparel manufacturing must uphold people's rights and dignity. Our facilities and partners are certified by programs that verify fair treatment of workers, safe environments, and ethical practices.



Environmental Responsibility

Sustainability is embedded in how we operate, and this is independently verified through rigorous global standards. Certifications ensure that we responsibly manage chemicals, water, and waste, while actively lowering emissions and supporting a circular economy.



Quality and Process Management

Strong systems are essential to delivering at scale. Our quality and process certifications ensure every product and every stage of production is managed with discipline and consistency.



Woven & Denim

From classic denim to technical workwear, our woven division brings precision, durability, and scale.

Core Capabilities

Our woven division is structured to handle both high-volume basics and technically demanding categories. Dedicated sewing lines, advanced weaving units, and specialized finishing processes ensure flexibility across fashion and utility needs. Products include:

- Denim bottoms and jackets
- Cargo pants and chinos
- Dresses, skirts, and tailored pieces
- Structured fashion garments for men, women, and kids

Denim Excellence

Denim remains a core strength, supported by modern weaving and washing facilities. With in-house fabric development, we deliver stonewashed, distressed, and garment-dyed finishes at industrial scale. This vertical setup allows us to compress lead times and provide consistent quality across every order.

Workwear and Utility

Our woven division extends into durable workwear, uniforms, and performance garments. Partner-enabled facilities give us capacity for heavy-duty categories including:

- Industrial and corporate uniforms
- Protective work jackets
- Winter jackets designed for insulation and durability
- Seam-sealed outer layers for weather protection



Finishing and Value-Added Services

The woven division is supported by specialized finishing lines to enhance fabric performance and appearance. Capabilities include:

- Enzyme, silicone, and softener washes
- Functional coatings for water resistance and durability
- Precision embroidery and embellishments
- Integrated trim and accessory solutions for ready-to-sell packages

Capacity and Scale

Through a combination of our own vertical units and trusted long-term partners, the woven division delivers over two million pieces per month across denim, casual wovenwear, and outerwear. This scale gives us the flexibility to handle both core programs for global retailers and high-value seasonal collections for fashion brands.

The woven and denim division offers more than garments. It delivers reliability, versatility, and technical depth, making it possible for our customers to launch workwear, denim, and outerwear collections with confidence.





Vertically Integrated Technology

Advanced machinery and digital services working together.

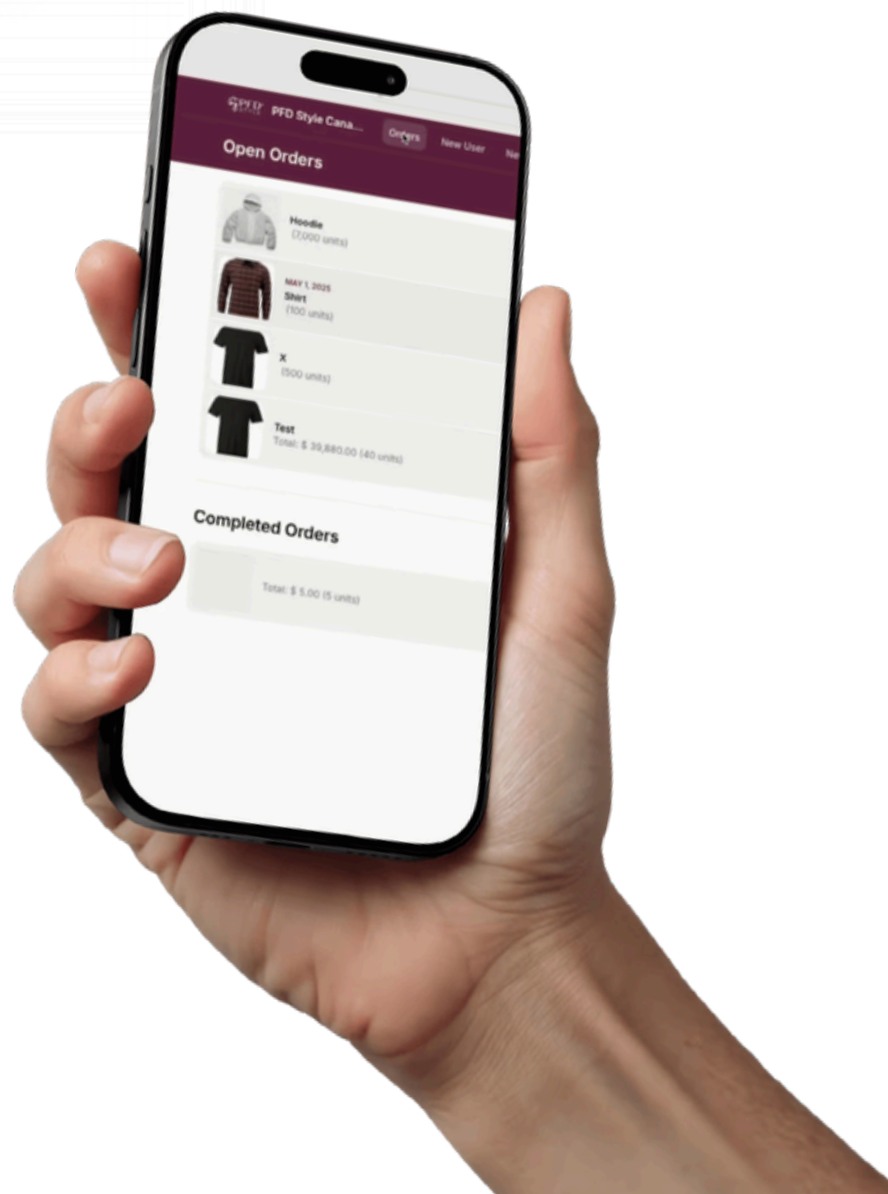
At PFD Style, technology is both tangible and digital. We invest in advanced production systems and value-added services that give customers speed, transparency, and reliability. By combining state-of-the-art machinery with ERP, PLM, and business intelligence tools, we deliver a sourcing model built for today's demands.

Spinning & Yarn

- 120,000 spindles with Trützschler, Toyota, Rieter, and Murata technology
- 70 tons of yarn produced per day across cotton, CVC, PC, and melange blends
- Automated contamination removal and yarn quality monitoring

Knitting & Fabric Development

- 64 circular knitting machines from Mayer & Cie, Pai Lung, and Pilotelli
- 9 flat knitting machines for specialty gauges
- Partner-enabled capacity of more than 1,200 computerized jacquard linking machines



Dyeing & Finishing

- 90 tons of bulk fabric dyed and finished per day, plus 1 ton per day sample capacity
- Sclavos Athena dyeing lines optimized for water and energy efficiency
- Bruckner stenters, Ferraro and Lafer compactors for precision finishing and shrinkage control
- Automated shade matching through

Garment Production

- 65 garment lines equipped with Juki, Pegasus, and Yamato machines
- Core production capacity of 5 to 8 million pieces per month, expandable to more than 12 million pieces with partners
- Specialized machinery for seam-sealed jackets padded down outerwear, and technical garments

Knitting & Fabric Development

- 64 circular knitting machines from Mayer & Cie, Pai Lung, and Pilotelli
- 9 flat knitting machines for specialty gauges
- Partner-enabled capacity of more than 1,200 computerized jacquard and linking machines
- Fabrics include Single Jersey, Rib, Terry, Fleece, Jacquard, and technical blends

Printing, Embroidery, and Yarn Dyeing

- 2 million garment prints per month
- 25 tons per day all-over printing capacity
- 1 million embroidery pieces per month with sequin, chenille, and decorative detailing
- 15 tons per day yarn dyeing capacity for cotton, blends, and synthetics

Testing & Quality Assurance

- In-house labs equipped with James Heal and DataColor systems
- AQL 2.5 and 1.5 standards applied across production
- 100 percent inspection capability for sensitive markets such as Japan

Digital Design & ERP Services

- 3D prototyping with Clo3D and Techpacker for rapid approvals and reduced sampling
- Virtual showrooms and interactive catalogues for instant product visualization
- ERP and PLM systems providing real-time dashboards, QA logs, and compliance documents
- Automatic alerts for order progress, milestones and shipment readiness

Business Intelligence & Insight

- Proprietary tools for demand forecasting and fabric risk assessment
- AI-driven insights for trend alignment and product planning
- Custom reports for lead-time compression, cost savings, and margin optimization

Technology at PFD is more than machinery. It is the combination of advanced production systems and digital intelligence that gives customers speed, accuracy, and confidence at every stage of their supply chain.





Sustainability

Responsible manufacturing built into every stage.

Our sustainability approach is more than compliance. It is a blueprint for how apparel manufacturing can reduce impact while creating long-term value. With advanced machinery, certified processes, and innovative material use, we ensure every garment reflects responsibility from start to finish.

Energy & Emissions

- Targeting 70 percent solar energy use by 2027
- Modern dyeing lines such as Sclavos Athena configured for low energy consumption
- Waste heat recovery systems to recycle thermal energy
- Continuous investment in partner facilities to scale renewable power adoption

Water Stewardship

- 1.8 million liters of rainwater harvested annually through collection and storage systems
- Advanced Effluent Treatment Plant with 3,600 cubic meters per day capacity
- Water Treatment Plant and recycling units minimizing fresh water intake
- Automated controls in dyeing machines to cut water use per kilogram of fabric

Waste Reduction

- Garbage into Garments upcycling program transforming textile waste into new products
- On-site systems for reclaiming cotton and polyester blends for reuse
- All-over printing facilities with 25 tons per day capacity designed for reduced pigment waste

Sustainable Materials

- Certified organic cotton programs
- Recycled polyester and nylon fabrics aligned with GRS and OCS standards
- Coffee-based fibers and other next-generation materials developed with long-term partners
- Yarn dyeing capacity of 15 tons per day supporting efficient use of sustainable inputs

Social & Worker Impact

- Workforce of more than 15,000 with access to medical care, dining, daycare, and training centers
- Partner programs that employ differently abled workers and invest in education for local communities
- Ongoing compliance with international frameworks such as Better Work and Amfori BSCI

Tech For Sustainability

- Bruckner stenters and Ferraro compactors configured for efficiency and lower emissions
- Automatic chemical dosing machines to reduce discharge and improve safety
- James Heal and DataColor systems used for right-first-time dyeing to avoid reprocessing

Sustainability is not a side initiative. It is the way we operate. By targeting renewable energy, harvesting water, reducing waste, and adopting next-generation fabrics, we give global brands the confidence to grow responsibly with us.



Social Responsibility

Empowering people, protecting communities, and sustaining trust.

At **PFD Style**, as part of Pakiza Knit & Woven and supported by trusted long-term partners, social responsibility is embedded in how we operate. We invest in the wellbeing of our people, the

Workforce Commitment

Our collective workforce exceeds 15,000 skilled associates across our facilities and partner divisions. Every worker is supported with fair wages, safe conditions, and opportunities to grow. Training in compliance, technical skills, and leadership ensures that our people advance alongside our company.

Medical & Family Support

- Free clinics staffed by MBBS doctors and qualified nurses ensure healthcare is accessible for all workers Daycare centers provide safe
- environments for children, complete with doctors, caregivers, and entertainment facilities Dining halls offer subsidized meals and rest spaces,
- giving workers comfort and dignity during their day

Safety & Wellbeing

Safety is central to our operations. Facilities are equipped with:

- CCTV monitoring across all production and access points
- Firefighting systems, alarms, and regular evacuation drills Clean water monitoring to
- safeguard health Modern machines including Juki,
- Pegasus, Yamato sewing lines and Mayer & Cie knitting units with integrated safety features



Community Engagement

We invest in the communities around us, extending impact beyond the factory walls:

- Support for local schools, orphanages, and mosques
- Scholarship programs reaching more than 200 children
- Tree planting and environmental awareness initiatives
- Partner-led social programs focusing on education and youth empowerment

Women Empowerment

We are committed to advancing women into leadership roles, with a target of 55 percent of supervisor positions held by women by 2027. Training, mentorship, and inclusive recruitment programs help break barriers and create pathways to leadership.

Verified by Global Standards

Our approach is validated through independent audits and certifications including Sedex, Amfori BSCI, WRAP, and Better Work. These frameworks confirm our alignment with international standards for worker rights, safety, and social development.

Social responsibility is not an obligation for us, it is our identity. By ensuring medical care, family support, safe workplaces, and community development, we build an apparel ecosystem where every garment strengthens both global brands and local lives.



Leadership

Vision, accountability, and industrial strength at the top.



Mr. Rafiqul Islam Khan, Chairman, Pakiza Group

Mr. Rafiqul Islam Khan is the founder and chairman of the Pakiza Group. His vision transformed a small family venture into one of Bangladesh's largest and most respected textile and apparel conglomerates. Under his leadership, Pakiza grew into a vertically integrated powerhouse with spinning, knitting, dyeing, printing, weaving, garments, and specialty divisions. His commitment to continuous investment in modern machinery, worker wellbeing, and international compliance frameworks has established the foundation on which the group continues to expand.



Mr. Rakibul Islam Khan, Managing Director, Pakiza Knit Group & PFD

Mr. Rakibul Islam Khan represents the new generation of leadership, combining entrepreneurial drive with operational discipline. As Managing Director, he oversees strategic direction, technology investment, and expansion into global markets. His role ensures that machine-led productivity remains at the core of the group, with more than 120,000 spindles, advanced Mayer & Cie and Pai Lung knitting machines, and Juki and Yamato sewing lines forming the backbone of production. He is focused on expanding partnerships, diversifying product categories, and scaling new opportunities for growth.



Mushfiqur Rahman, CEO, PFD Enorsia Canada Corporation

Mushfiqur Rahman leads the Canadian headquarters, focusing on management, marketing, technology, and customer service. He is the bridge between global brands and South Asian production, ensuring transparency, governance, and seamless execution. His strengths lie in building customer relationships, managing complex sourcing programs, and introducing digital tools that enhance speed and visibility. From marketing strategy to service delivery, he ensures buyers experience reliability, responsiveness, and innovation at every stage of engagement.



Why PFD?

We reduce uncertainty from apparel sourcing.

Most brands face delays, inconsistent quality, and hidden risks. We provide a clear alternative. Our purpose is simple: give buyers the confidence to launch collections faster and grow without sleepless nights.

We deliver speed without compromise.

Our vertical integration means we manage every stage from yarn to finished garment. With 120,000 spindles, 64 circular and 9 flat knit machines, and more than a hundred garment lines, we can move from design to bulk with unmatched efficiency. Advanced testing systems ensure the first sample matches full production, while large-scale printing and embroidery capacity allow programs to scale reliably.

We offer accountability you can trust.

Headquartered in Canada with operations in the UK, Germany, China, Pakistan, and Bangladesh, we combine global service standards with South Asia's strongest manufacturing base. Customers know exactly where their products are made, how they are monitored, and who is responsible.

We create long-term value.

Working with PFD means more than garments. Brands gain reliability, stability, and a partner who anticipates challenges before they appear. For our workers, partners, and buyers, we build opportunity, consistency, and sustainable growth.

At PFD Style, our promise is simple: **Launch Fast. Sleep Well.** That is why people choose us, stay with us, and grow with us.



PFD Enorsia Canada Corporation Launch Fast. Sleep Well.

Head Office – Canada 777

Hornby Street, Suite 600,
Vancouver, BC, V6Z 1S4

contact@pfdstyle.com

+1 (778) 902-2901

Global Offices



Los Angeles, USA

12100 Wilshire
Blvd, 8th Floor



Fritzlar, Germany

Gewerbering 1



London, United Kingdom

102 Langley Road,
Watford WD17 4PJ



Dhaka, Bangladesh

Grameen Banglar Akshay
Tower, 51 Madani Avenue

