


STUDY SET

SOLARIS

- 

2,627 SQ FT
- 

DOUBLE GARAGE
- 

1-STORY
- 

3 BEDROOMS
- 

2 BATHROOMS
- 

2 HALF BATHS



This Study Set is a handy, print-ready bundle of SOLARIS’s key drawings and performance data. It lets you review the design, evaluate how it fits on your site, and begin initial discussions with builders. Please note that the Study Set is intended strictly for conceptual and informational purposes and cannot be used legally for construction.

INTRODUCING SOLARIS

Meet SOLARIS. A modern, energy-efficient home designed around the principles of Scandinavian style. More than just a look, it's about creating a better everyday life by focusing on well-being and efficiency. Scandinavian-style living in SOLARIS means:

LIGHT-FILLED INTERIORS

Natural light throughout the home creates bright spaces that feel open and energizing.

ENERGY EFFICIENCY

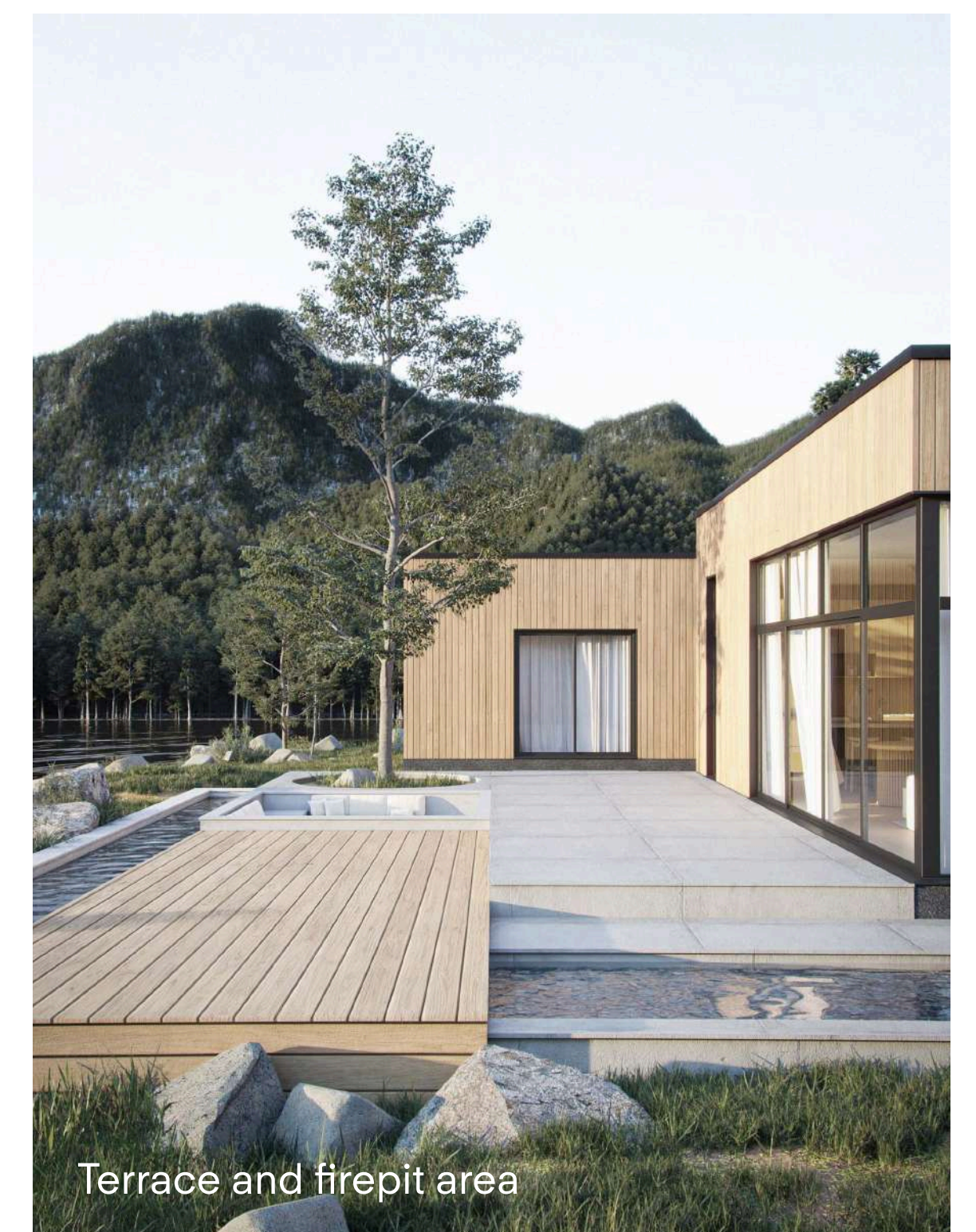
A flat roof with solar panels, high-performance windows, and ENERGY STAR® appliances ensure lower energy usage.

PRACTICAL LAYOUTS

Thoughtfully designed spaces support daily routines and adapt to changing needs.

NATURAL MATERIALS

A minimalist aesthetic grounded in warm, natural finishes brings a sense of calm and timeless beauty.

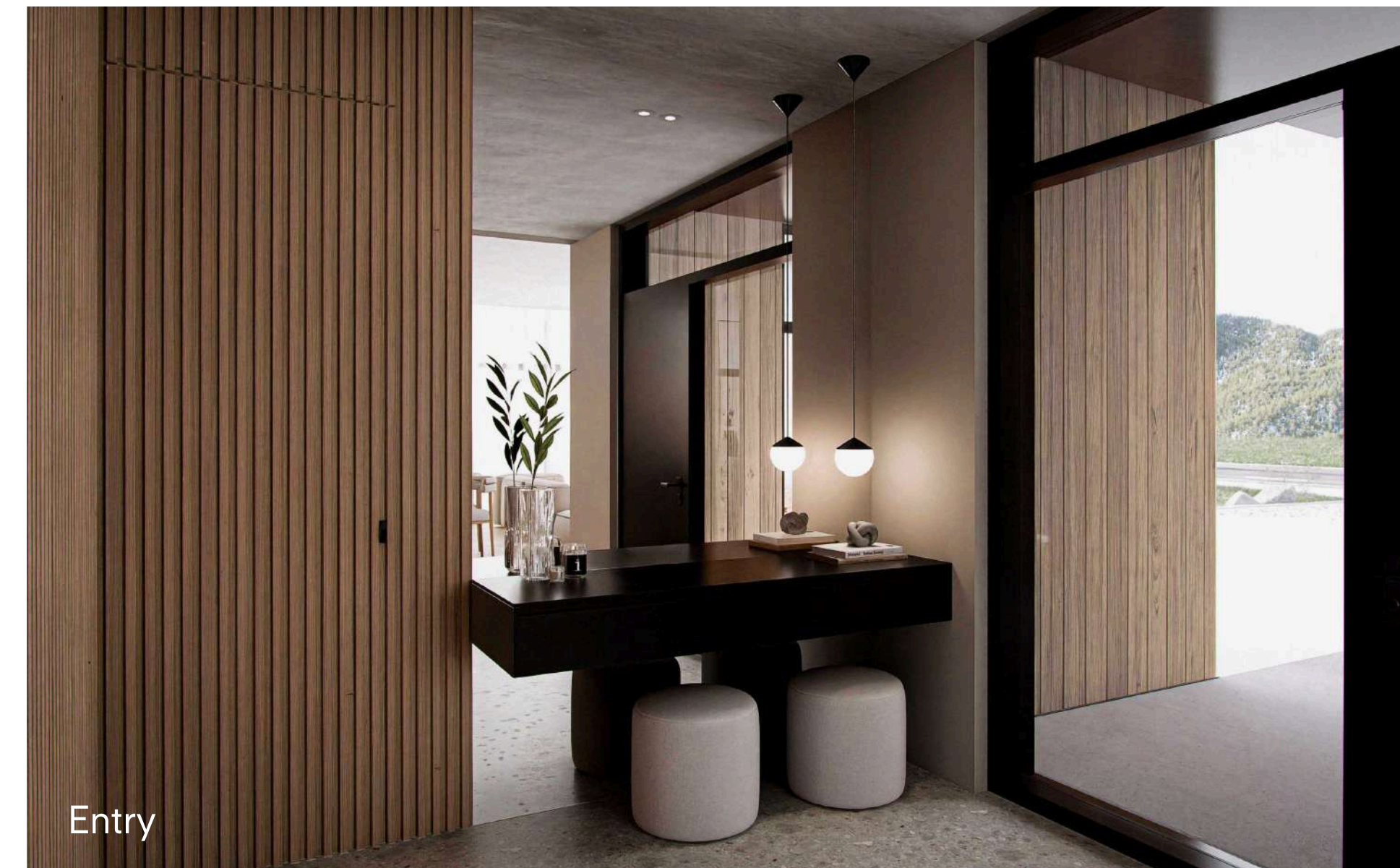


LAYOUT SOLARIS

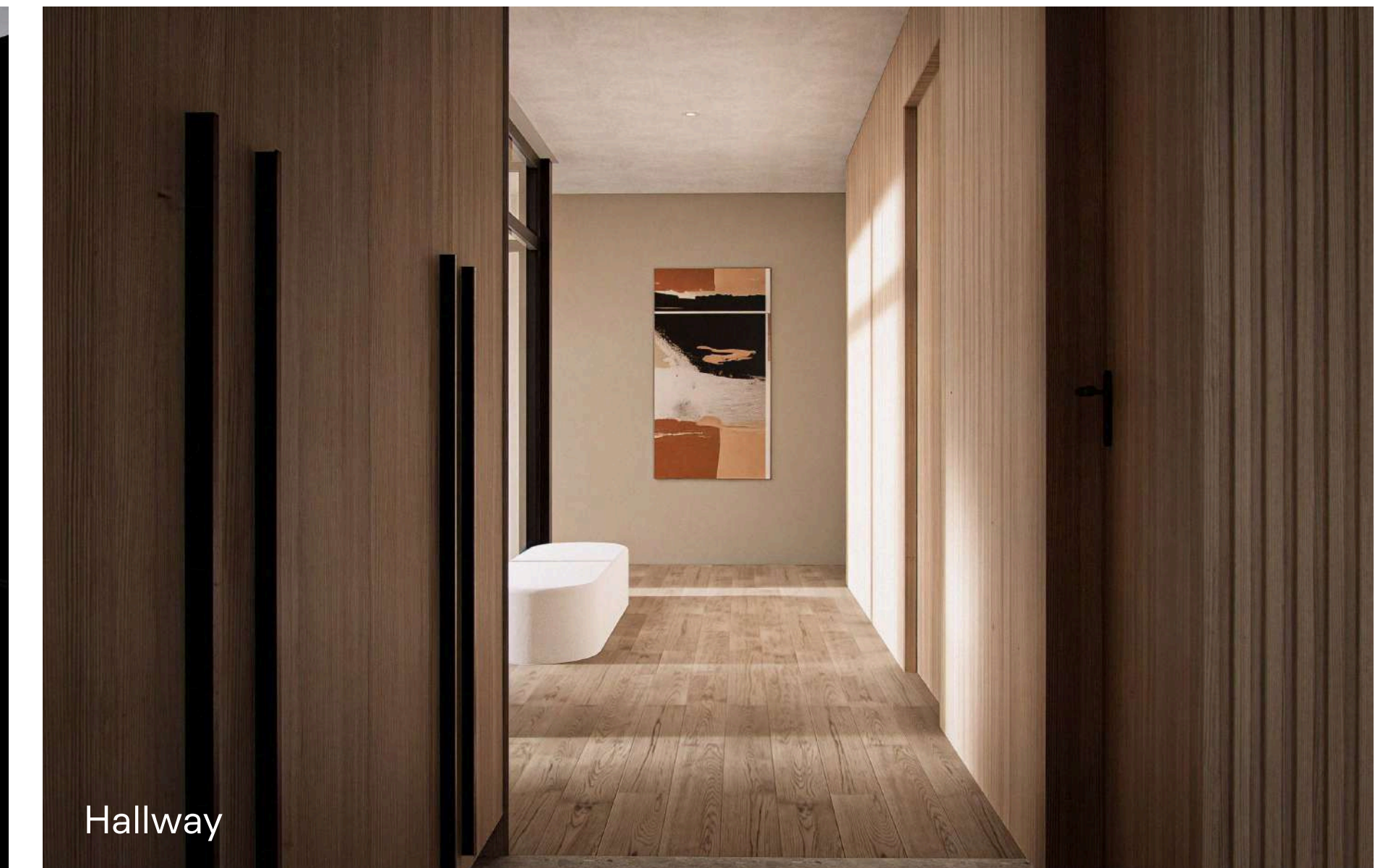
SOLARIS brings the heart of Scandinavian living into every corner of your home. Large floor-to-ceiling windows invite natural light to pour in, creating a bright, uplifting atmosphere throughout the day. Natural daylight helps improve sleep, boost your mood, and support your overall well-being by keeping your body's natural rhythm in balance.

The layout is designed to make everyday life easy and enjoyable. With a spacious, open-plan living area, the home feels welcoming from the moment you walk in. Whether you're hosting friends or just enjoying a quiet evening, there's room to breathe.

A double garage with direct access to the living area adds convenience, especially during busy days or bad weather. There's a practical mudroom with outdoor access to help keep the rest of the house clean, plus dedicated laundry, storage, and utility rooms to keep your space organized and clutter-free.



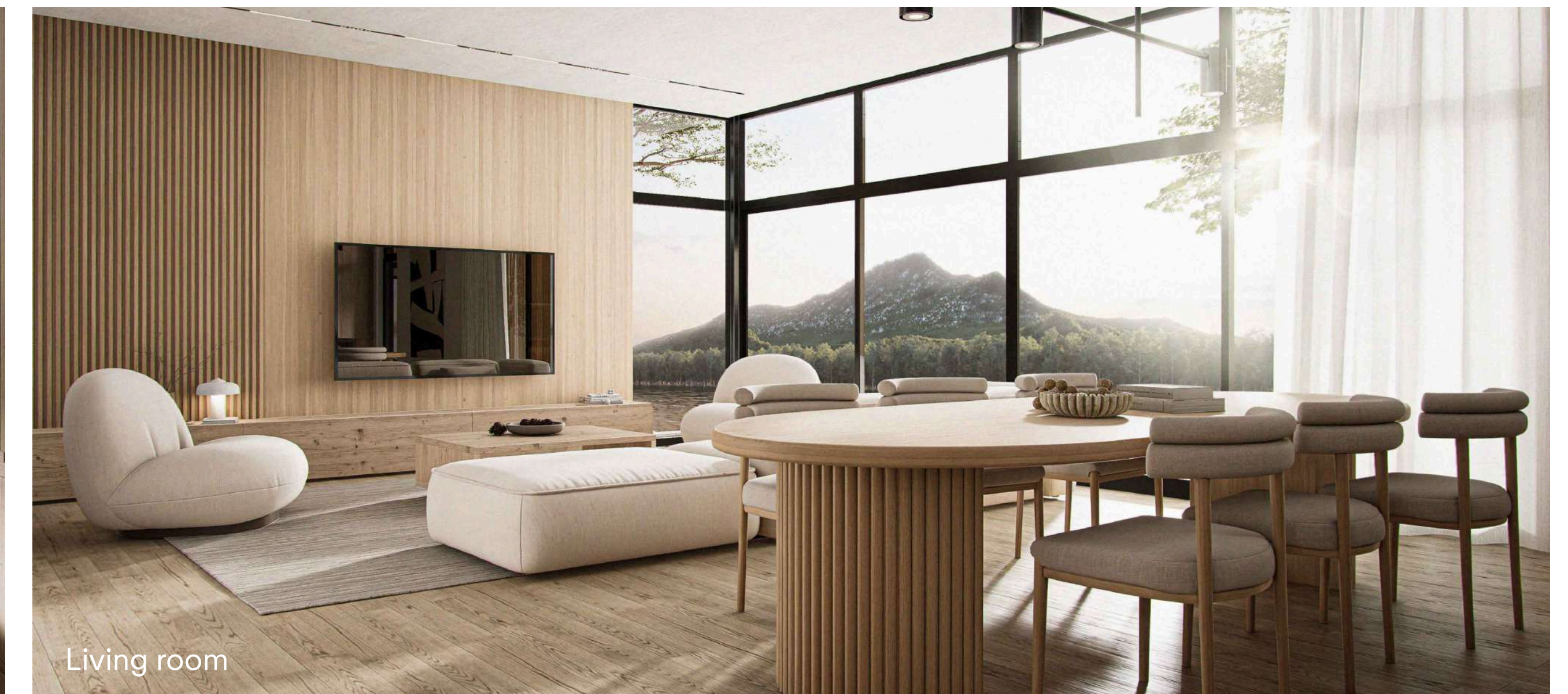
Entry



Hallway



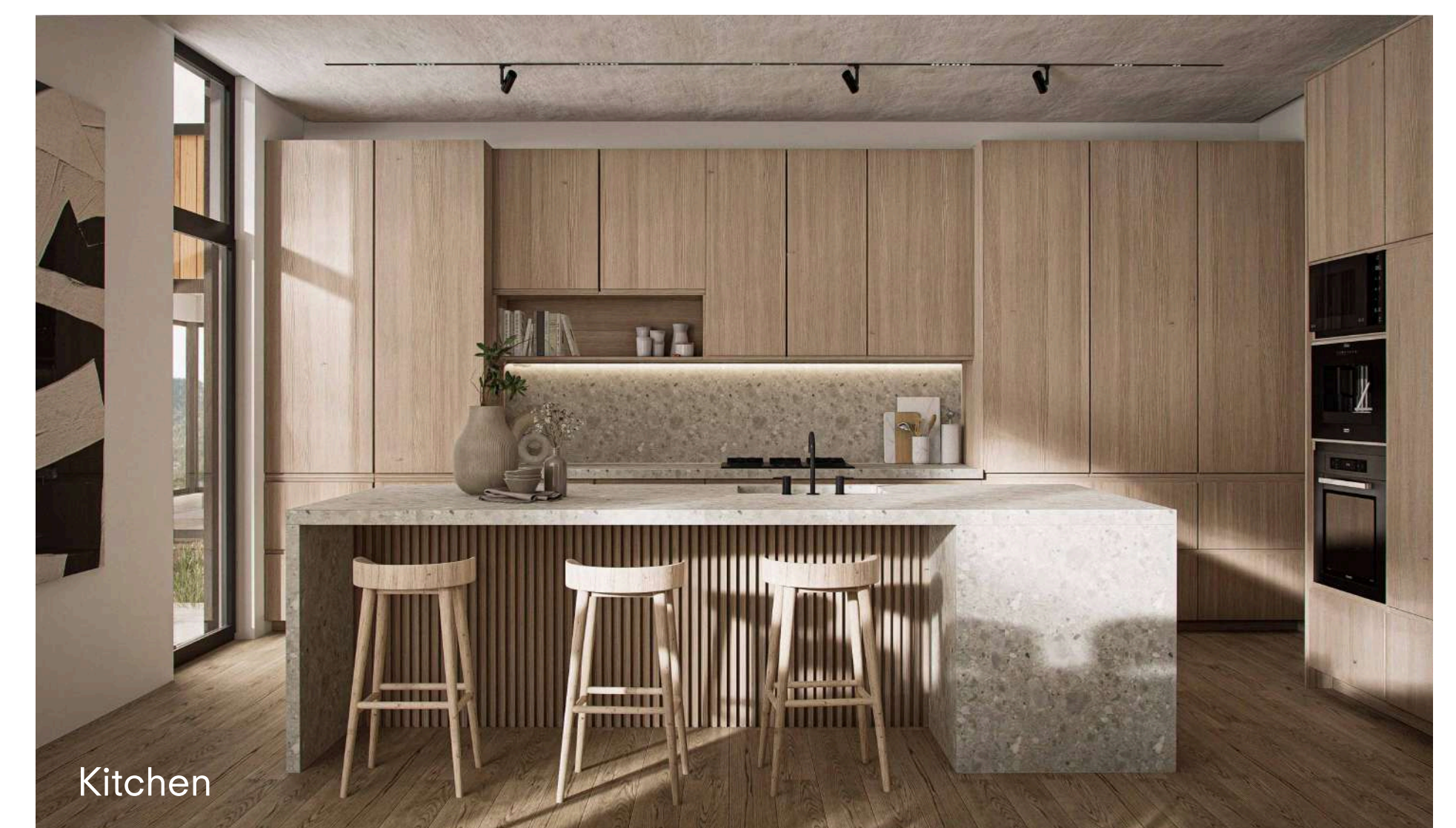
Kitchen



Living room



Living room

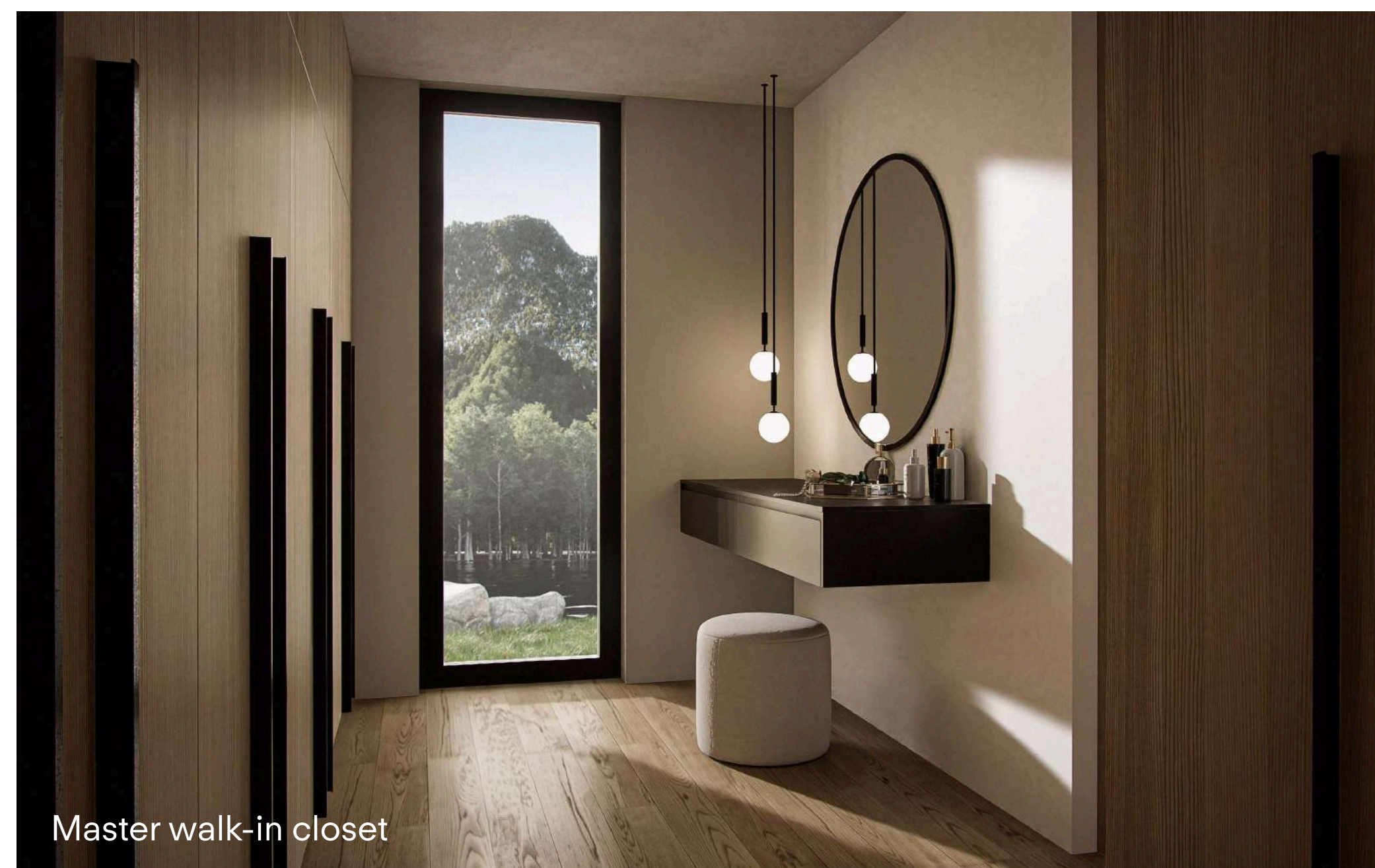
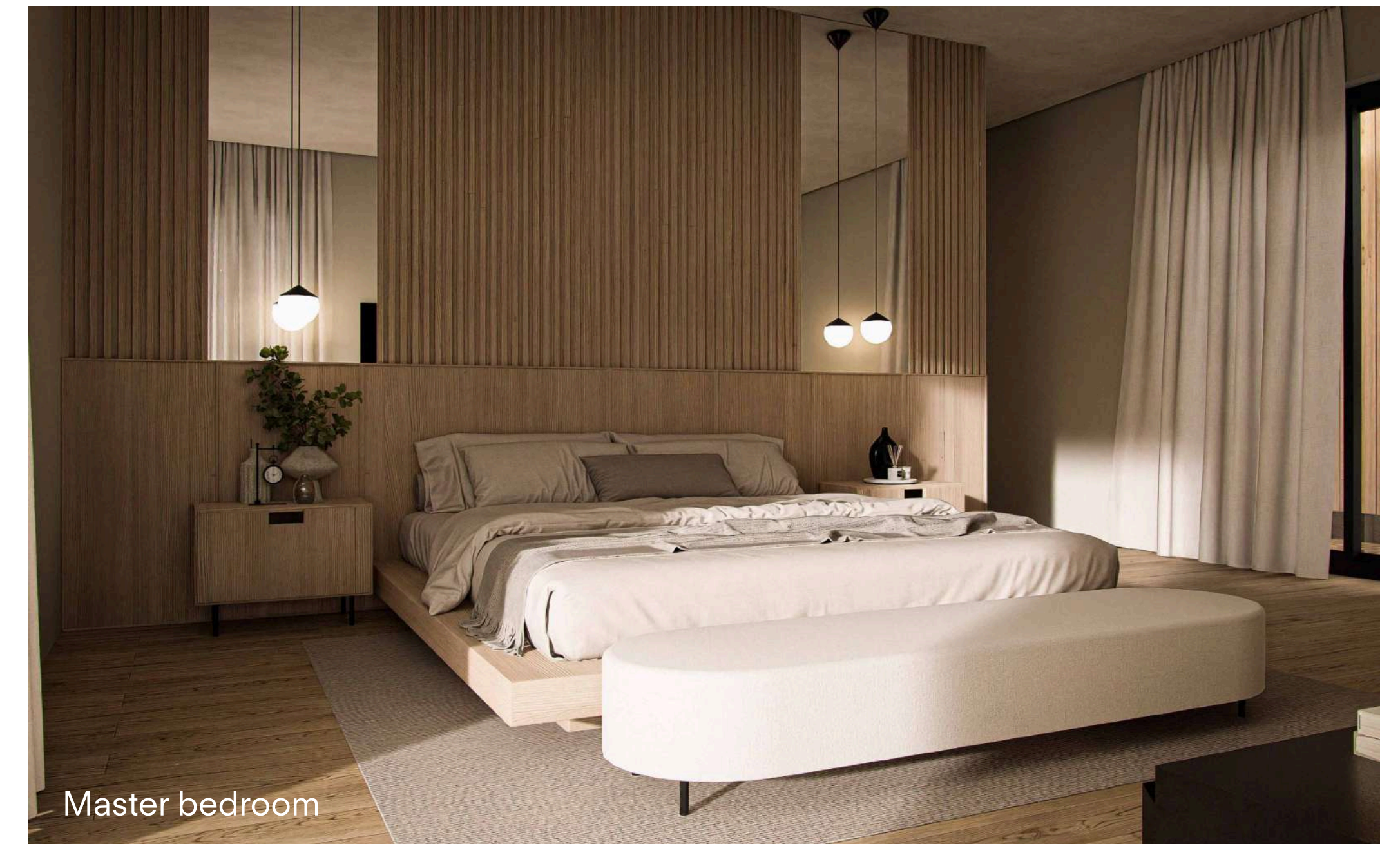
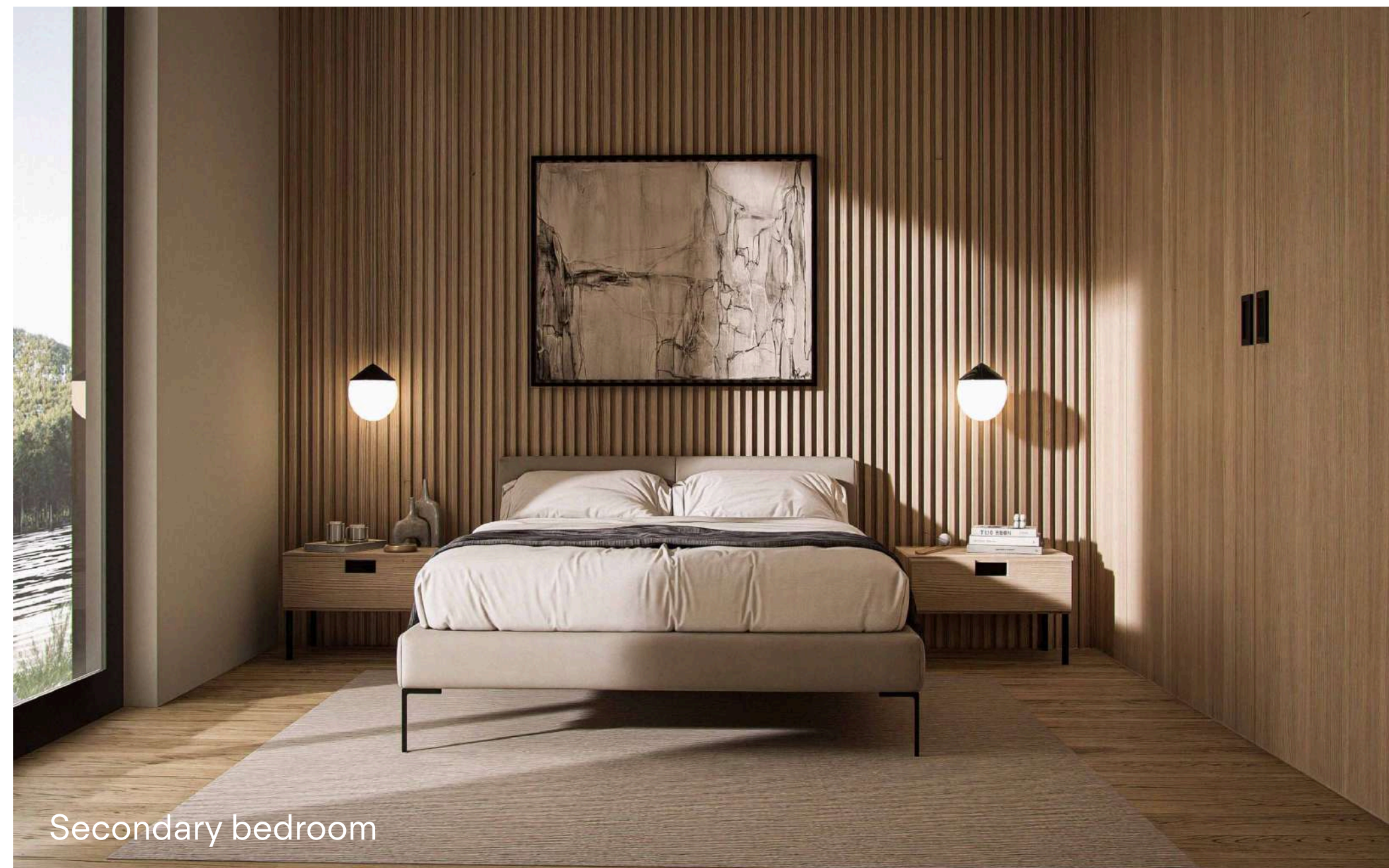


Kitchen

LAYOUT SOLARIS

The home's layout includes a private bedroom wing with a spacious master suite, complete with a walk-in closet and a modern en-suite bathroom. Two additional well-sized bedrooms offer comfort for family or guests and share a functional, well-designed bathroom.

One of the standout features of this design is its flexibility for future expansion. The layout has been thoughtfully arranged to allow for easy modifications, whether you're looking to add more living space, a home office, or additional bedrooms as your needs evolve over time.



SPECIFICATIONS

SOLARIS

SOLARIS features traditional timber framing, natural mineral wool insulation, ENERGY STAR® appliances, and high-efficiency Low-E argon-filled windows and doors. Below are the key features and main dimensions of the home.

Ground Floor

- Views and access to a large terrace

Floor-to-ceiling windows

Entrance pavilion

Separated living and sleeping areas
- Open-concept living area

Kitchen island with a sink

Laundry room

Storage room

Garage

- Double garage with front entry

Direct access to the living space
- Discreet mudroom

Utility room

Outdoor Spaces

- Covered entry terrace

Large terrace with access from the master bedroom, living room, and kitchen
- Sunken fire pit with seating area

Water feature

Master Bedroom

- King-size bed with two nightstands

Floor-to-ceiling windows

Spacious walk-in closet

Direct access to the bathroom
- Freestanding bathtub

Double sinks

Enclosed toilet room

Direct access to the terrace

Secondary Bedrooms

- Queen-size bed with two nightstands

Nearby access to the shared bathroom
- Built-in closet

Floor-to-ceiling windows

HERS® Index

- HERS® Index score from -21 to 44, depending on the climate zone
- Annual energy savings up to \$5,000

Area

- Total Heated Area (THA)

Ground Floor

Second Floor

Basement

Garage
- 2,627 sq ft

2,627 sq ft

-

-

616 sq ft (not included in THA)

Dimensions

- Width

Depth

Height (above grade)
- 73' 4"

66' 0"

14' 6"

Beds/Baths

- Bedrooms

Bathroom

Half Baths
- 3 (Master Bedroom + 2 Secondary Bedrooms)

2 (Full Bath + Shower Room)

2

Ceiling Heights

- Ground Floor

Second Floor

Basement

Garage
- 9' 0" (10' 0" Kitchen and Living Room)

-

-

9' 6"

Construction Type

- Foundation Type

Exterior Walls

Roof

Windows

Exterior Doors
- Slab-on-Grade

Wood Frame | 2×6 | Vertical Wood Cladding

Flat roof with installed solar panels

Aluminum frames with Low-E argon-filled glass

Insulated steel doors with Low-E argon-filled glass

HVAC System

- Heating and Cooling

Air Distribution

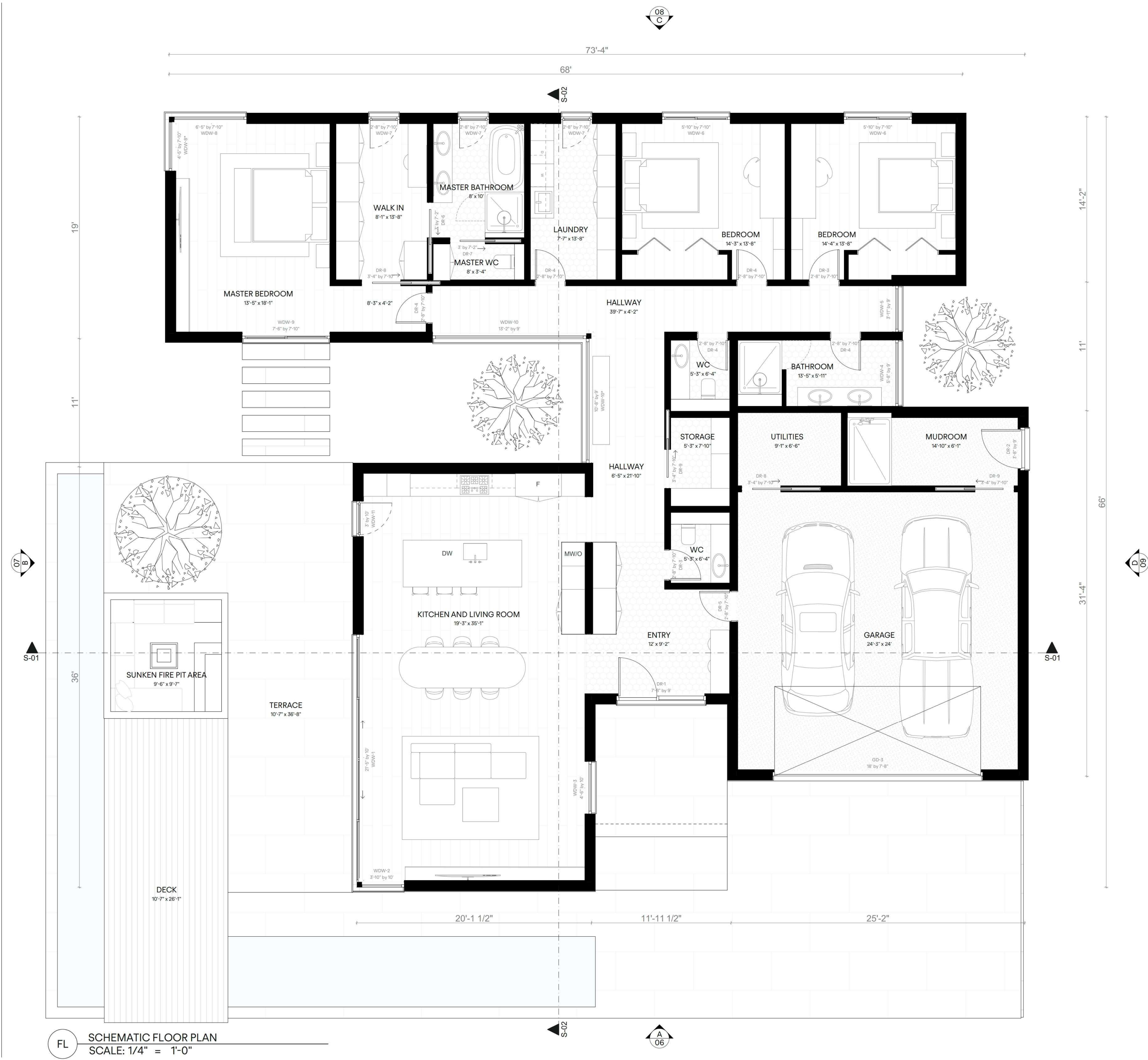
Energy Efficiency

Exhaust Ventilation
- Two high-efficiency split-system heat pumps

Two multi-position, variable-speed air handlers

Energy-recovery ventilator (ERV)

Six quiet ENERGY STAR certified exhaust fans



ROOM-SPECIFIC SQUARE FOOTAGE	
ROOM NAME	MEASURED AREA sq ft
BATHROOM	79
BEDROOM	194
BEDROOM	194
ENTRY	135
GARAGE	583
HALLWAY	279
KITCHEN AND LIVING ROOM	674
LAUNDRY	103
MASTER BATHROOM	81
MASTER BEDROOM	277
MASTER WALK-IN	110
MASTER WC	27
MUDROOM	92
STORAGE	42
UTILITIES	59
WC	33
WC	33
2 995 ft²	

All measurements are taken from the inside faces of the stud walls.

AREA SCHEDULE	
AREA NAME	MEASURED AREA sq ft
GARAGE	616
OUTDOOR LIVING SPACES	901
TOTAL HEATED AREA	2 627
GROUND LEVEL FOOTPRINT	3 243

The measurements of GLA and GARAGE are taken from the outside faces of the exterior stud walls.

FLOOR COVER MATERIALS			
	TILES		HARDWOOD DECKING
	NATURAL HARDWOOD PARQUET		LIMESTONE TILES
	POLISHED CONCRETE		

nordichomeplans

The Nordic Way of Living

NOTES

This plan is provided for conceptual and informational purposes only and is not intended for construction.

Any use of this plan for building purposes is strictly prohibited.

You are responsible for compliance with all applicable laws and codes and no warranties are provided.

To use this plan, you have to adhere to the terms of use available at www.nordichomeplans.com.

DRAWING NOTES

- TOTAL SQUARE FOOTAGE TYPICALLY ONLY INCLUDES CONDITIONED SPACE AND DOES NOT INCLUDE GARAGES, PORCHES, BONUS ROOMS, OR DECKS.

PROJECT

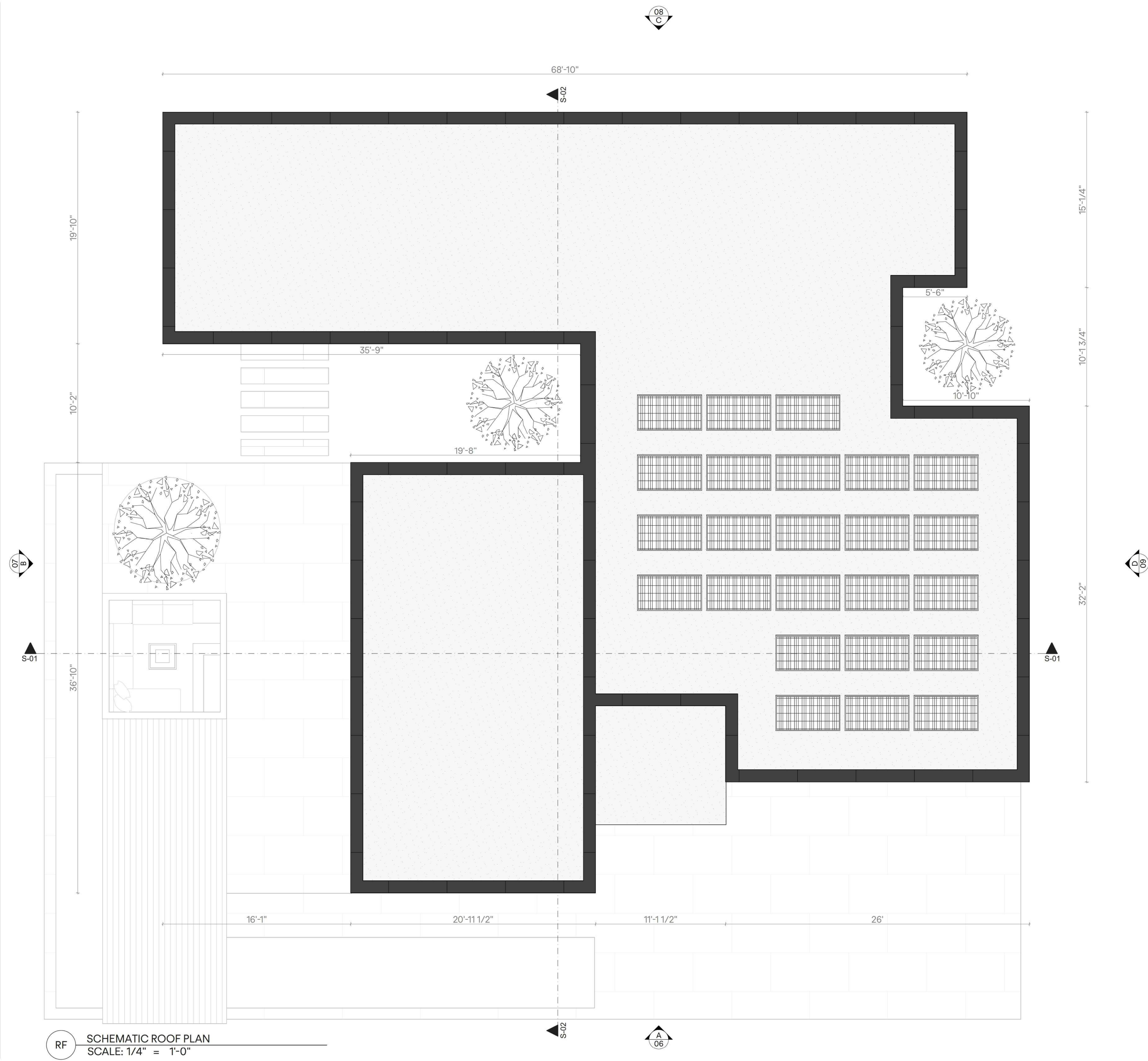
SOLARIS
STUDY SET
NHP


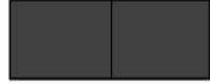
DRAWING NAME Schematic Floor Plan
DATE 2025
SCALE 1/4" = 1'-0"
SHEET SIZE 24"x36"
DRAWN BY Gertrud Palm, Ragnar Palm

www.nordichomeplans.com

SHEET NO

SH 1.1



ROOF COVER MATERIALS			
	ELASTOMERIC MEMBRANE		PARAPET WALL CAP

nordichomeplans

The Nordic Way of Living

NOTES

This plan is provided for conceptual and informational purposes only and is not intended for construction.

Any use of this plan for building purposes is strictly prohibited.

You are responsible for compliance with all applicable laws and codes and no warranties are provided.

To use this plan, you have to adhere to the terms of use available at www.nordichomeplans.com.

DRAWING NOTES

PROJECT

SOLARIS
STUDY SET
NHP

DRAWING NAME Schematic Roof Plan

DATE 2025

SCALE 1/4" = 1'-0"

SHEET SIZE 24"x36"

DRAWN BY Gertrud Palm, Ragnar Palm

www.nordichomeplans.com

SHEET NO

SH 1.2

NOTES

This plan is provided for conceptual and informational purposes only and is not intended for construction.

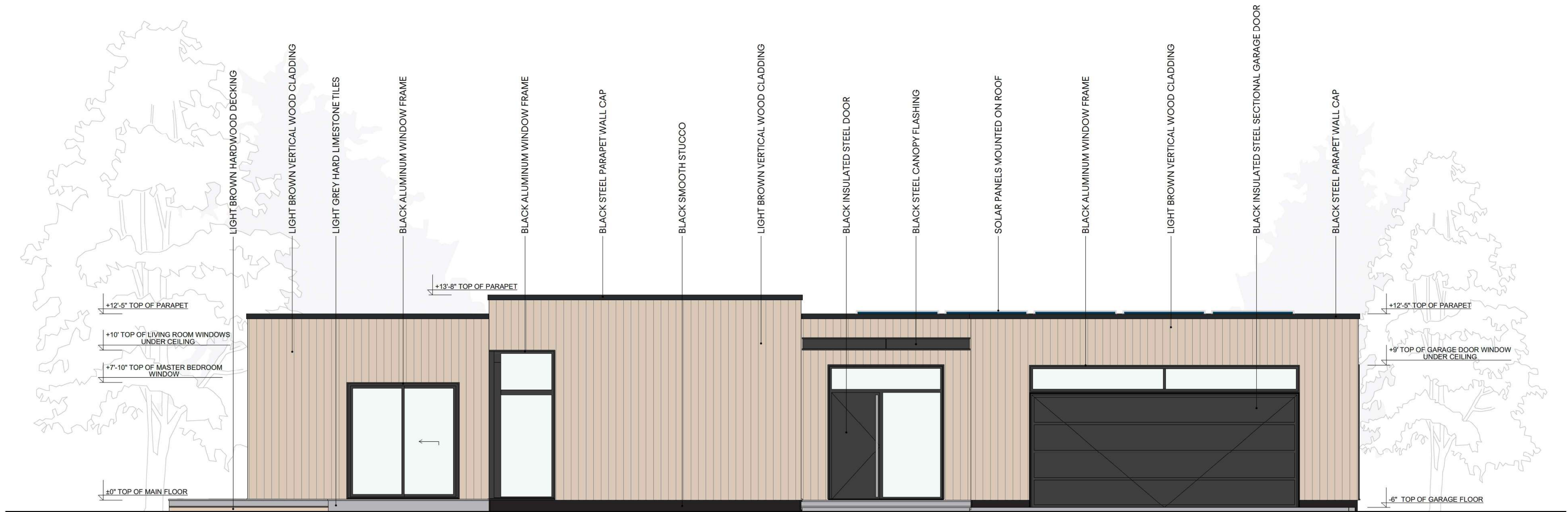
Any use of this plan for building purposes is strictly prohibited.

You are responsible for compliance with all applicable laws and codes and no warranties are provided.

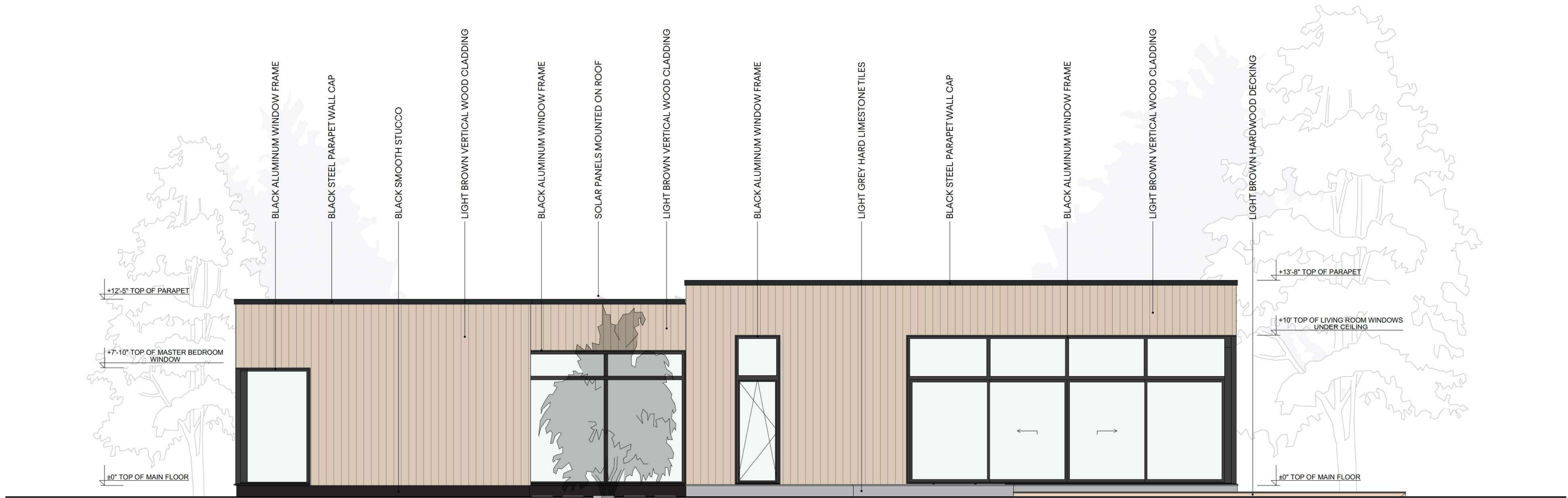
To use this plan, you have to adhere to the terms of use available at www.nordichomeplans.com.

DRAWING NOTES

- ALL COLORS SHOWN IN THE PLANS CAN BE ADJUSTED BY THE CLIENT DURING THE CONSTRUCTION PROCESS IF NEEDED.



A FRONT ELEVATION
SCALE: 1/4" = 1'-0"



B LEFT SIDE ELEVATION
SCALE: 1/4" = 1'-0"

PROJECT

SOLARIS
STUDY SET
NHP

DRAWING NAME Schematic Exterior Elevations A&B

DATE 2025

SCALE 1/4" = 1'-0"

SHEET SIZE 24"x36"

DRAWN BY Gertrud Palm, Ragnar Palm

www.nordichomeplans.com

SHEET NO

NOTES

This plan is provided for conceptual and informational purposes only and is not intended for construction.

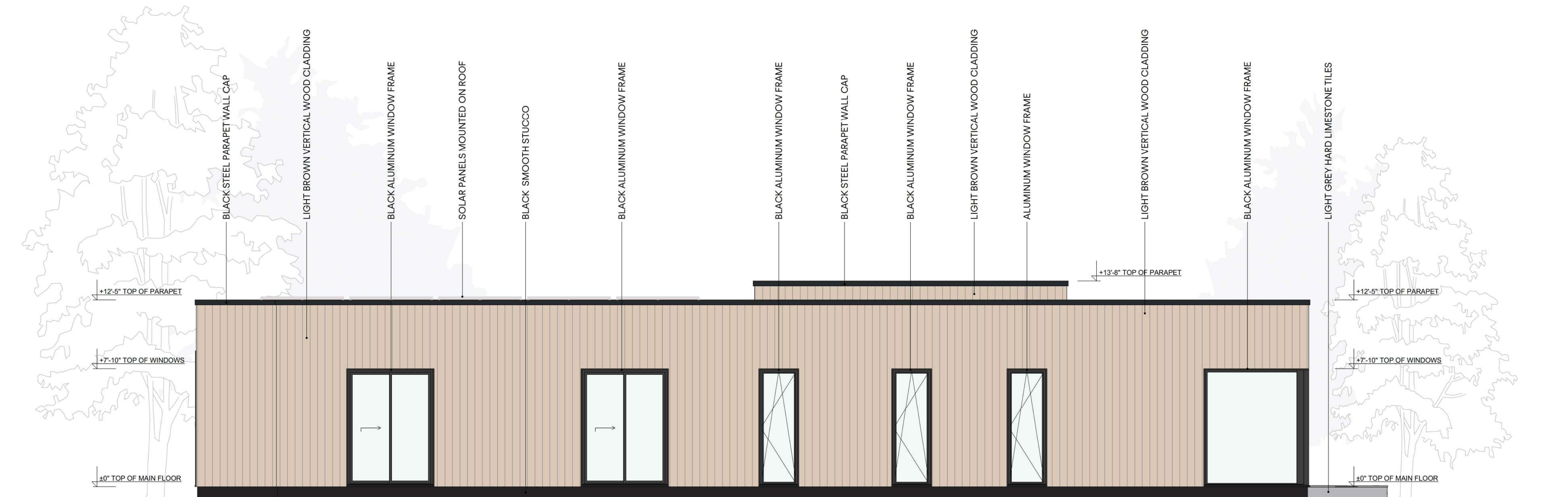
Any use of this plan for building purposes is strictly prohibited.

You are responsible for compliance with all applicable laws and codes and no warranties are provided.

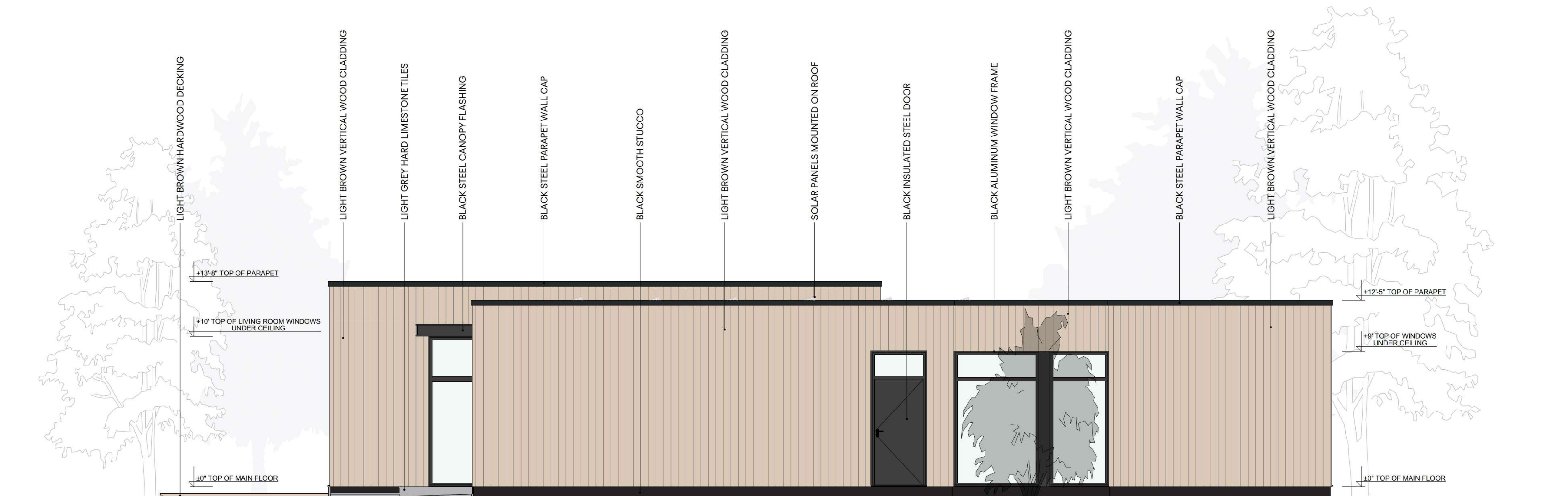
To use this plan, you have to adhere to the terms of use available at www.nordichomeplans.com.

DRAWING NOTES

- ALL COLORS SHOWN IN THE PLANS CAN BE ADJUSTED BY THE CLIENT DURING THE CONSTRUCTION PROCESS IF NEEDED.



C BACK ELEVATION
SCALE: 1/4" = 1'-0"



D RIGHT SIDE ELEVATION
SCALE: 1/4" = 1'-0"

PROJECT

SOLARIS
STUDY SET
NHP

DRAWING NAME Schematic Exterior Elevations C&D

DATE 2025

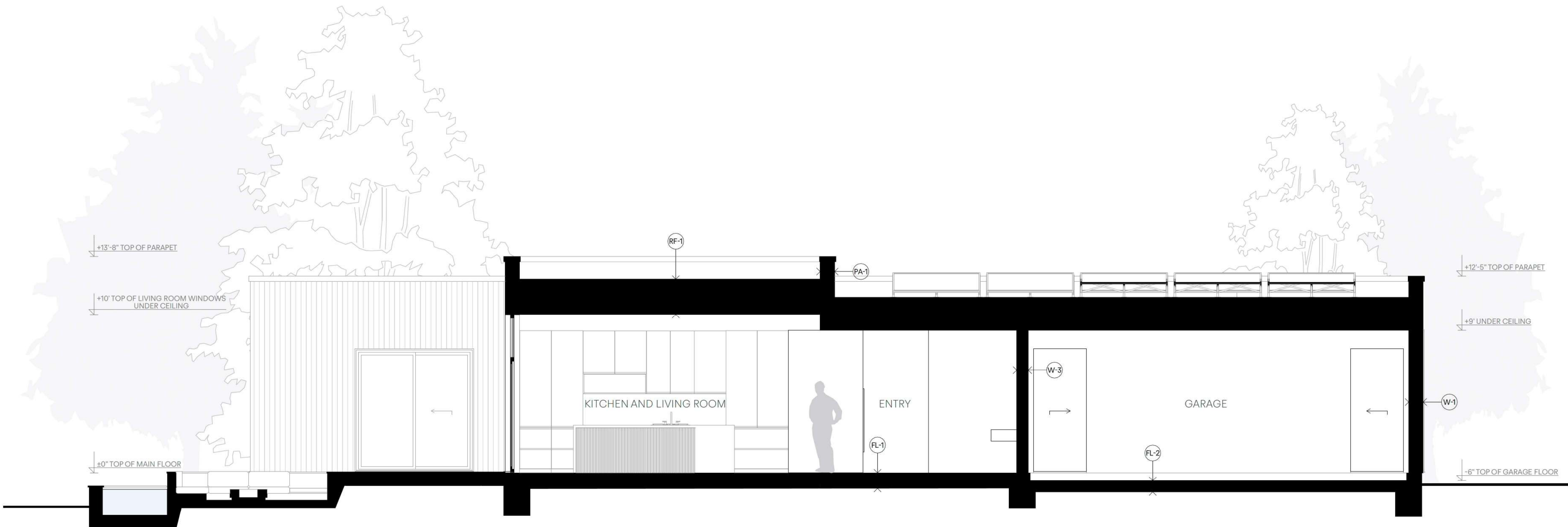
SCALE 1/4" = 1'-0"

SHEET SIZE 24"x36"

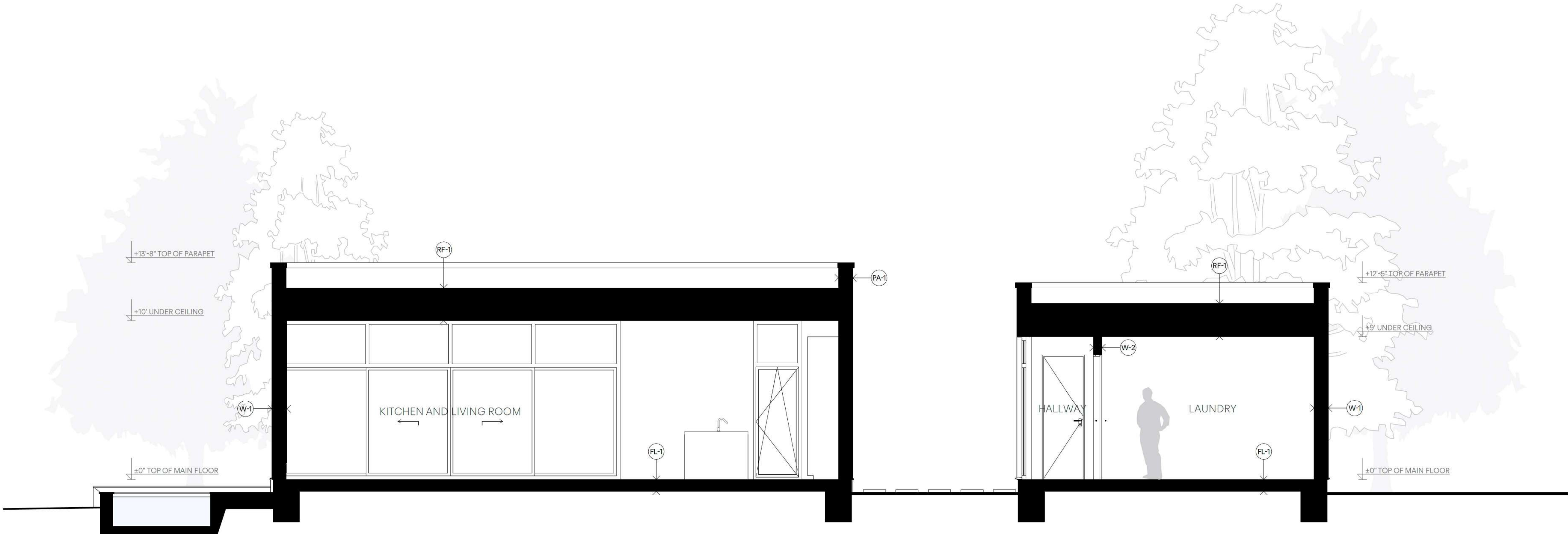
DRAWN BY Gertrud Palm, Ragnar Palm

www.nordichomeplans.com

SHEET NO



S-01 BUILDING SECTION
SCALE: 1/4" = 1'-0"



S-02 BUILDING SECTION
SCALE: 1/4" = 1'-0"

COMPOSITION DESCRIPTION

W-1 EXTERIOR WALL - LIGHT CLADDING

- EXTERIOR COATING (SEE EXTERIOR SIDING LEGEND FOR SPECIFICATION)
- FURRING 1"x3" @ 16" O.C
- WOOD STUD ACCORDING TO STUD FURRING
- TYVEK PAPER
- 1" R-5 CONTINUOUS RIGID INSULATION
- 3/8" SHEATHING
- 2"x6" WOOD STUD @ 16" O.C WITH R-21 MINERAL WOOL BETWEEN
- VAPOR BARRIER
- 1"x3" FURRING @ 16" O.C
- 1/2" DRYWALL
- INTERIOR COATING (PAINT, WALLPAPER OR TILES)

W-2 STANDARD INTERIOR PARTITION - APPLICABLE TO ALL UNLESS OTHERWISE INDICATED

- INTERIOR COATING (PAINT, WALLPAPER OR TILES)
- 1/2" DRYWALL
- 1"x3" FURRING @ 16" O.C
- VAPOR BARRIER
- 2"x4" STUDS @ 16" O.C WITH MINERAL WOOL BETWEEN
- VAPOR BARRIER
- 1"x3" FURRING @ 16" O.C
- 1/2" DRYWALL
- INTERIOR COATING (PAINT, WALLPAPER OR TILES)

W-3 INTERIOR LOAD-BEARING PARTITION

- INTERIOR COATING (PAINT, WALLPAPER OR TILES)
- 1/2" DRYWALL
- 1"x3" FURRING @ 16" O.C
- VAPOR BARRIER
- 2"x6" STUDS @ 16" O.C WITH MINERAL WOOL BETWEEN
- VAPOR BARRIER
- 1"x3" FURRING @ 16" O.C
- 1/2" DRYWALL
- INTERIOR COATING (PAINT, WALLPAPER OR TILES)

W-4 INTERIOR PARTITION NON INSULATED

- INTERIOR COATING (PAINT, WALLPAPER OR TILES)
- 1/2" DRYWALL
- 2"x4" STUDS @ 16" O.C
- 1/2" DRYWALL
- INTERIOR COATING (PAINT, WALLPAPER OR TILES)

FL-1 FLOOR

- FLOOR COVER (SEE LEGEND)
- 4" REINFORCED CONCRETE SLAB
- 0.006" POLYETHYLENE VAPOR BARRIER, SEALED JOINTS
- 4" R-20 EXTRUDED POLYSTYRENE INSULATION ON ALL THE SURFACE
- 4-6" COMPACTED GRANULAR FILLING 0-3/4"
- UNRELAPPED SOIL

FL-2 GARAGE FLOOR

- 4" REINFORCED CONCRETE SLAB, POLISHED
- 0.006" POLYETHYLENE VAPOR BARRIER, SEALED JOINTS
- 4" R-20 EXTRUDED POLYSTYRENE INSULATION ON ALL THE SURFACE
- 4-6" COMPACTED GRANULAR FILLING 0-3/4"
- UNRELAPPED SOIL

RF-1 FLAT ROOF

- ELASTOMERIC MEMBRANE OF CONTINUOUS FINISH ON THE ROOF, WELDED JOINTS
- CONTINUOUS ELASTOMERIC UNDERLAYMENT MEMBRANE ON THE ROOF, WELDED JOINTS
- 3/4" ROOF SHEATHING
- ROOF TRUSSES @ 24" O.C WITH BLOWN-IN MINERAL WOOL INSULATION R-49 BETWEEN
- VAPOR BARRIER
- 1"x3" FURRING @ 16" O.C
- 1/2" SCREWED DRYWALL
- INTERIOR COATING (PAINT)

PA-1 PARAPET - COORDINATE SIDING WITH ELEVATIONS

- EXTERIOR CLADDING (SEE EXTERIOR SIDING LEGEND FOR SPECIFICATION)
- FURRING 1"x3" @ 16" O.C OR AIR STRIP
- TYVEK BARRIER
- 1" R-5 CONTINUOUS RIGID INSULATION
- 3/8" SHEATHING
- 2"x6" WOOD STUD @ 16" O.C WITH R-21 MINERAL WOOL BETWEEN
- 1/2" SHEATHING
- CONTINUOUS ELASTOMERIC UNDERLAYMENT MEMBRANE ON THE ROOF, WELDED JOINTS
- ELASTOMERIC MEMBRANE OF CONTINUOUS FINISH ON THE ROOF, WELDED JOINTS

nordichomeplans

The Nordic Way of Living

NOTES

This plan is provided for conceptual and informational purposes only and is not intended for construction.

Any use of this plan for building purposes is strictly prohibited.

You are responsible for compliance with all applicable laws and codes and no warranties are provided.

To use this plan, you have to adhere to the terms of use available at www.nordichomeplans.com.

DRAWING NOTES

PROJECT

SOLARIS
STUDY SET
NHP

DRAWING NAME Schematic Building Sections 1-1 / 2-2

DATE 2025

SCALE 1/4" = 1'-0"

SHEET SIZE 24"x36"

DRAWN BY Gertrud Palm, Ragnar Palm

www.nordichomeplans.com

SHEET NO

SH 1.5

ENERGY EFFICIENCY SOLARIS

We wanted to prove officially that SOLARIS is really energy-efficient and not just a big claim. So we reached out to certified Home Energy Rater professionals to determine exactly how efficient SOLARIS is. The result is an official HERS® certificate for each major climate zone in the United States, showing the real energy savings and lower utility bills SOLARIS can offer.

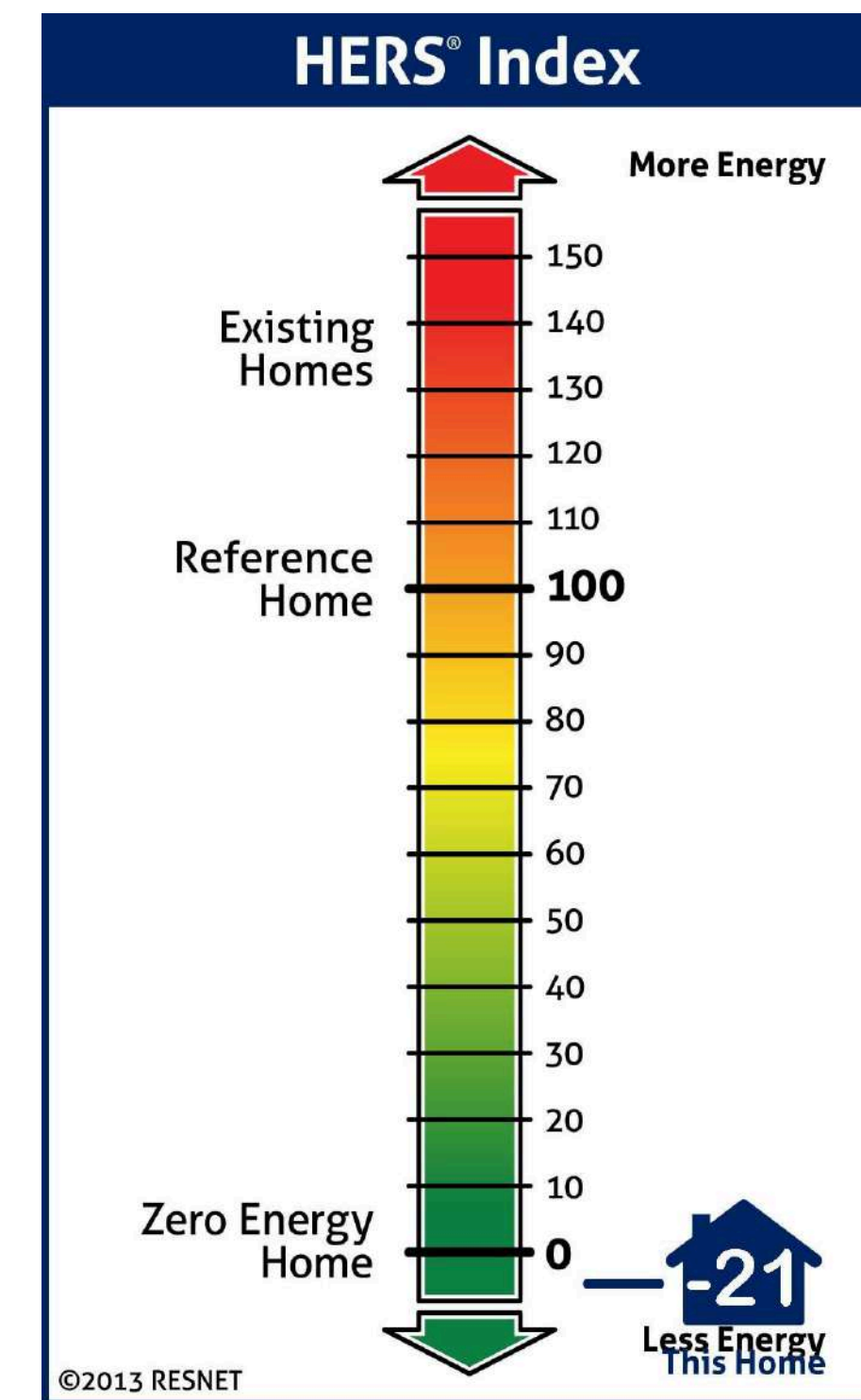
What is HERS® Index?

The HERS® Index measures a home's energy efficiency with a performance score: the lower the score, the better!

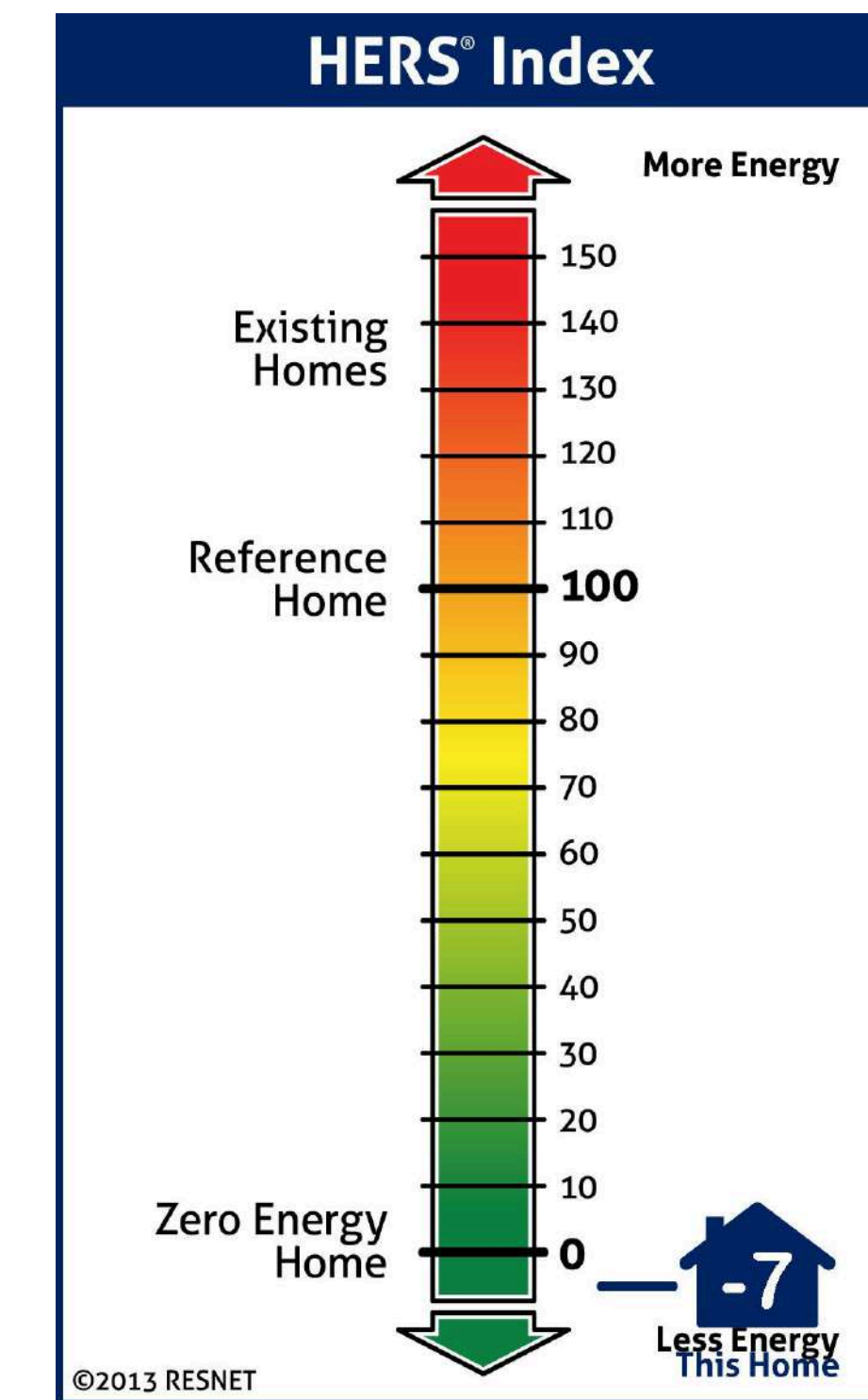
A score of 100 matches a typical new home, while 0 means the home produces as much energy as it uses, also known as a net-zero home. Understanding your HERS® Index can help you save on energy bills, improve comfort, and boost your home's value while reducing its environmental impact.

The climate zone where the home is located determines its energy use for heating and cooling, directly impacting the energy index. To determine your climate zone, use a climate zone lookup tool, either by entering your [ZIP code](#) or using a [map](#). Once you've identified your climate zone, simply look the corresponding zone image to get the HERS® Index for SOLARIS home in your area.

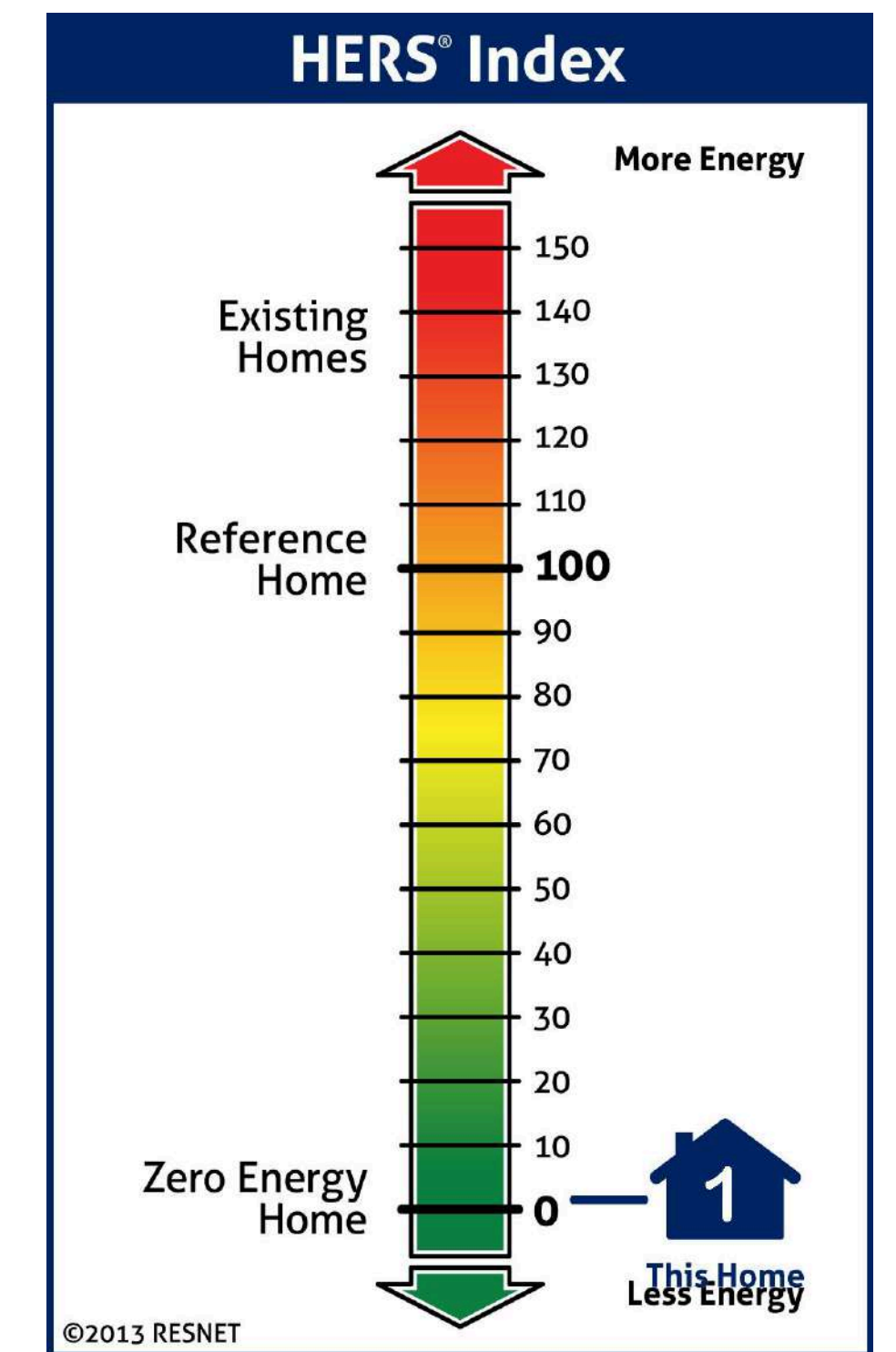
We offer HERS® Index ratings for six primary climate zones, as these are the most common and widely used. However, if you're in a different climate zone, we can still provide a HERS® Index for your area upon request. Just let us know, and we'll be happy to accommodate your specific needs.



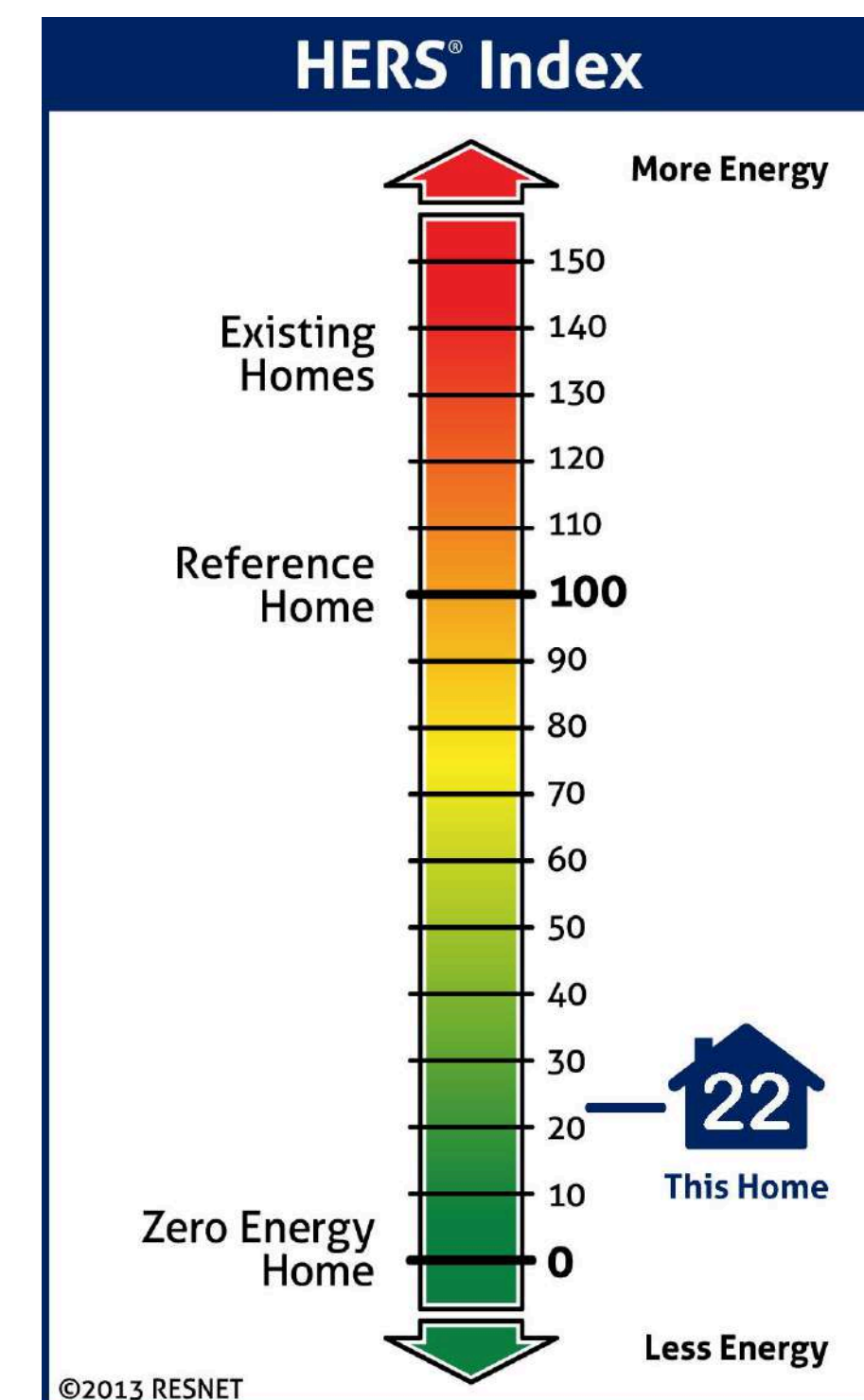
CLIMATE ZONE 2
HERS Index of -21: The home produces substantially more energy than it uses, and any surplus can be sold back to the grid.



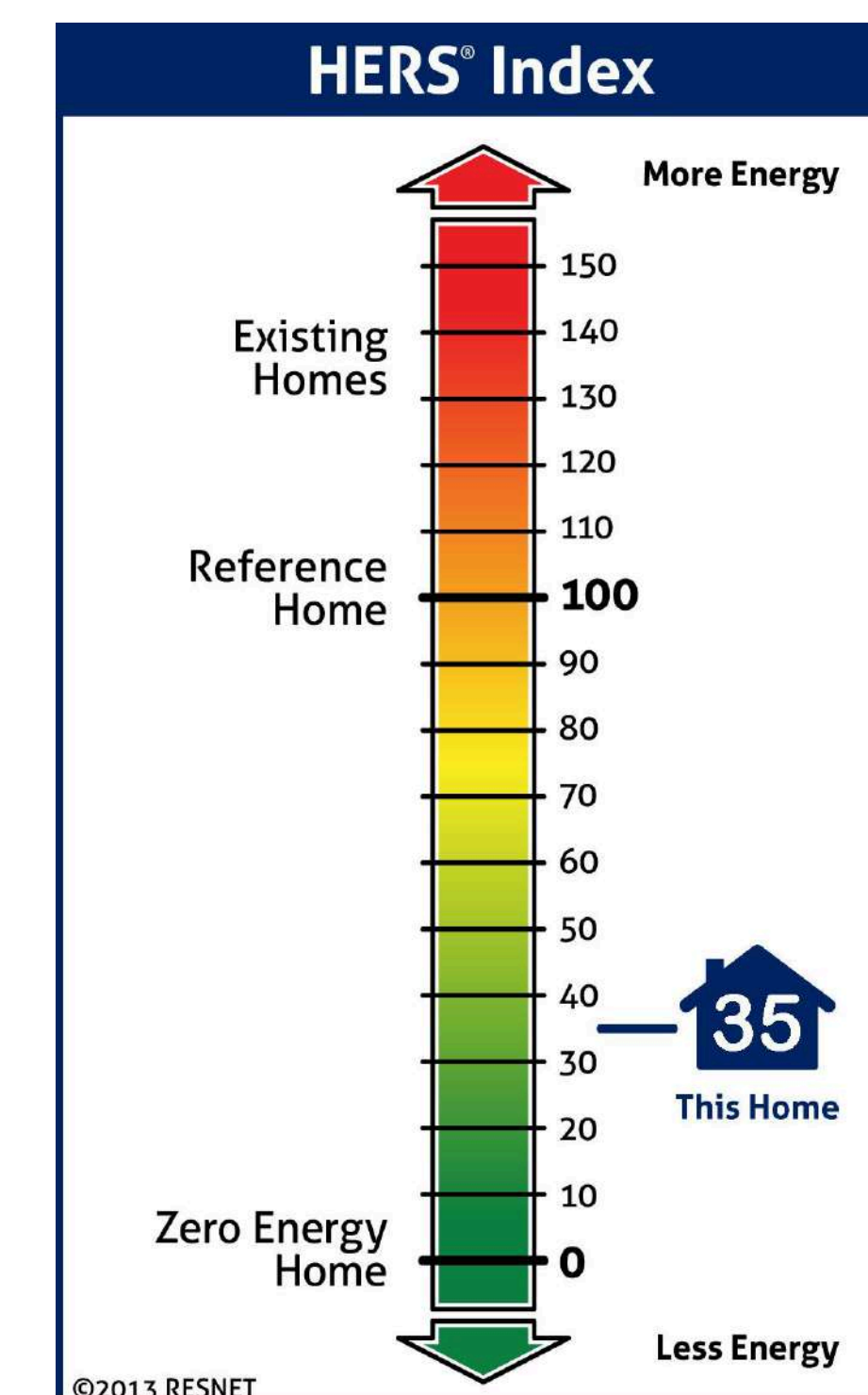
CLIMATE ZONE 3
HERS Index of -7: The home produces still more energy than it uses, and any surplus can be sold back to the grid.



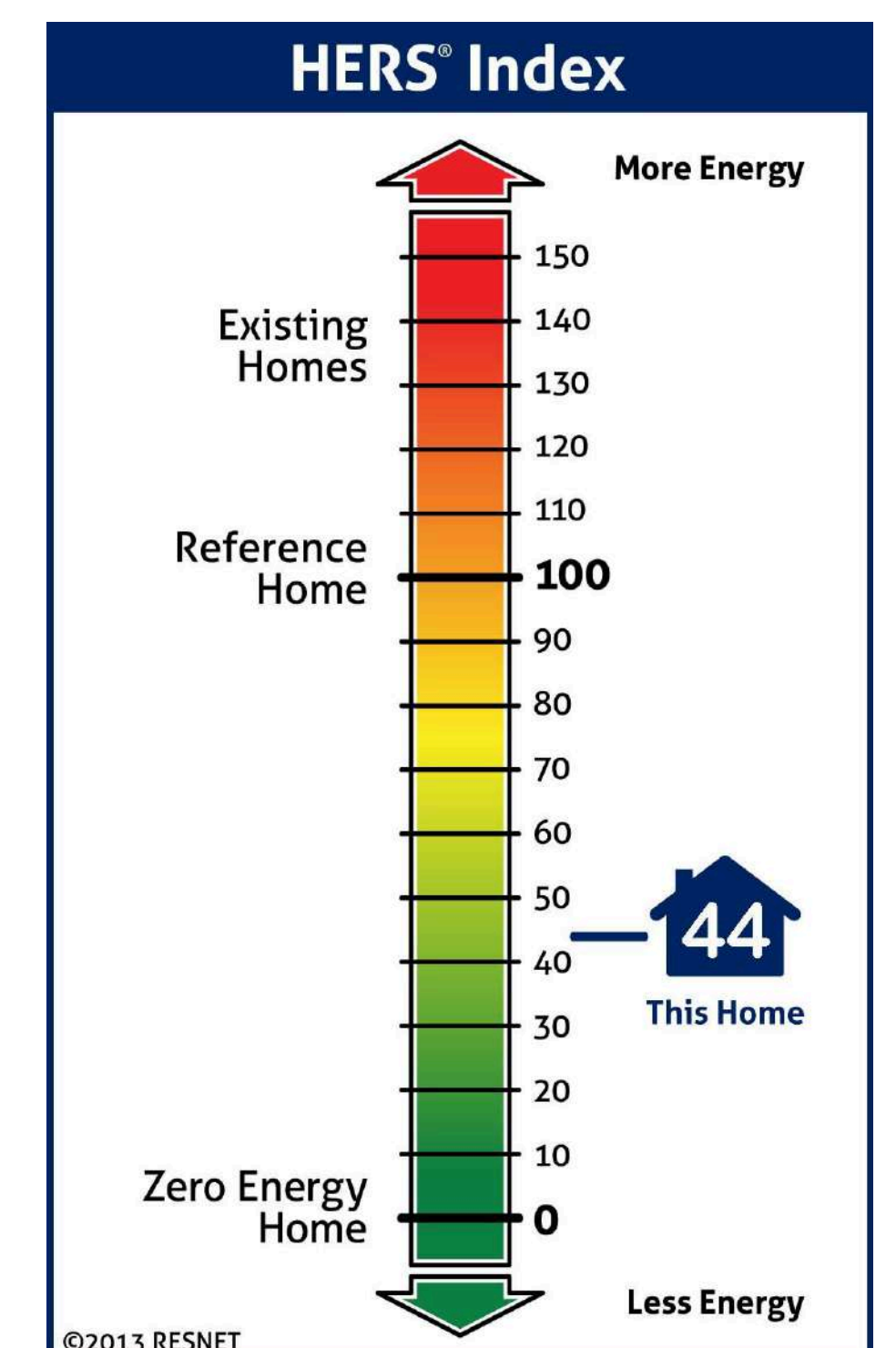
CLIMATE ZONE 4
HERS Index of 1: The home produces the same amount of energy it consumes, achieving net-zero performance.



CLIMATE ZONE 5
A HERS score of 22: The home uses about 78 % less energy than a standard new home. It falls just short of net-zero, so a modest amount of purchased energy is still needed



CLIMATE ZONE 6
A HERS score of 35: The home uses roughly 65 % less energy than a standard new home meaning the utility bills are significantly lower.



CLIMATE ZONE 7
A HERS score of 44: The home uses 56% less energy than a standard new home, resulting in roughly half the utility bills.

NEXT STEPS

SOLARIS

We hope this Study Set has helped you explore the SOLARIS home in depth and given you a clear overview of its layout and design. While the Study Set serves as an introductory file with its 4 sheets of schematic plans and general information, it is legally not intended for construction.

To move forward with your build, we offer two comprehensive upgrade options:

Building Set

The Building Set includes 14 sheets of fully construction-ready drawings that provide a much deeper level of detail. It contains everything needed for smooth construction process, including structural drawings, MEP plans, a complete material list, and energy efficiency certificates. All the drawings come in both PDF and CAD formats.

These detailed packages are designed to give your builder everything they need to start construction confidently and efficiently. Explore the comparison table to find the right option for your build.

Premium 3D Set

The Premium 3D Set includes everything from the Building Set plus SketchUp, BIMx, and Revit model files - perfect for advanced planning and customization. With these tools, you can take virtual walkthroughs of your future home, try out different furniture layouts, and explore various materials and finishes.

	Study Set	Building Set	Premium 3D Set
Cover Sheet	●	●	●
Schematic Floor Plan	●	●	●
Schematic Roof Plan	●	●	●
Schematic Exterior Elevations	●	●	●
Schematic Building Sections with Material Descriptions	●	●	●
All Plans in PDF	●	●	●
Collection of 3D Images	●	●	●
General Specifications	●	●	●
Foundation Plan	●	●	●
Floor Plan	●	●	●
Roof Plan	●	●	●
Exterior Elevations	●	●	●
Building Sections with Construction Details & Material Descriptions	●	●	●
Framing Plan	●	●	●
Roof Truss Layout	●	●	●
Window & Door Schedule	●	●	●
Lighting Plan	●	●	●
Power Plan	●	●	●
Plumbing Plan	●	●	●
Plumbing Riser Plan	●	●	●
HVAC Plan	●	●	●
All Plans in CAD (.dwg)	●	●	●
Full Material List	●	●	●
Cost Estimate	●	●	●
Home Energy Rating System (HERS) Certificate	●	●	●
FREE Plan Customization	●	●	●
SketchUp 3D Model File	●	●	●
BIMx 3D Model File	●	●	●
Revit 3D Model File	●	●	●

BUYING OPTIONS

SOLARIS

Thank you for exploring the SOLARIS Study Set. If you're ready to move forward with your dream home, choose between two upgrade options to get complete construction-ready plans.

Both the Building Set and Premium 3D Set include everything required for your builder to confidently begin the project with clear, detailed drawings and technical documentation. The Premium 3D Set also unlocks powerful digital tools for planning, customizing, and visualizing your future home.

With either set, you can use our free plan customization option to adapt SOLARIS to better suit your lifestyle, site conditions, or design preferences.

Choose the option that fits your goals best and take the next step toward building smarter - just follow the matching link on the right to get started.



Building Set

\$2,999.00

- ✓ Detailed Construction Drawings & Material Descriptions
- ✓ Plans for Water Supply, Plumbing, Electrical, and HVAC Systems
- ✓ Full Material List with Cost Estimate
- ✓ Home Energy Rating System (HERS) Certificate
- ✓ FREE Plan Customization*

[GET BUILDING SET HERE](#) ↗

Premium 3D Set

\$4,999.00

- ✓ Everything Included in the Building Set
- ✓ SketchUp 3D Model File
- ✓ BIMx 3D Model File
- ✓ Revit 3D Model File
- ✓ FREE Plan Customization*

[GET PREMIUM 3D SET HERE](#) ↗

*FREE Plan Customization is valid for one round of modifications within 6 months of purchase and applies to changes to the plans only.