

**HALIFAX
CONVENTION
CENTRE**

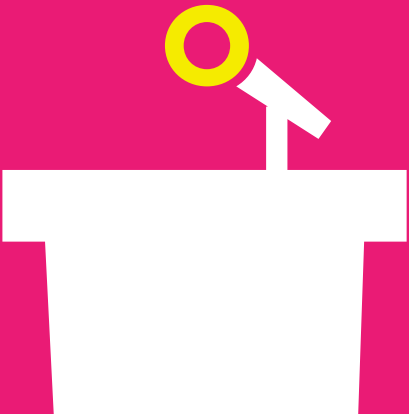
Where it all comes together.



Our in-house culinary team is dedicated to providing exceptional dining experiences for our guests. We believe that food is not just fuel, but an experience that brings people together and our team is proud to showcase the best of Nova Scotia's culinary offerings. We look forward to welcoming you to our table!

Events made easy.

From defining your technology requirements to planning your unique table settings, our skilled event professionals are always here to help. Together, with our official in-house partners for audiovisual and trade show services, Encore and Global Convention Services Ltd., we'll provide seamless support to deliver an unforgettable event experience.





On the edge of North America. In the centre of it all.

It's easy to make the most of every moment in Nova Scotia. Discover our famous Maritime hospitality as you explore Halifax's vibrant and historic city streets. Find outdoor adventure, scenic beaches, wineries, golf and much more all less than an hour away.



Halifax is the ultimate walkable city. We're just minutes away from hotels, shops, restaurants, and more. Step outside, into the streets and spaces of our city and truly experience what it's like to love Nova Scotia like a local.

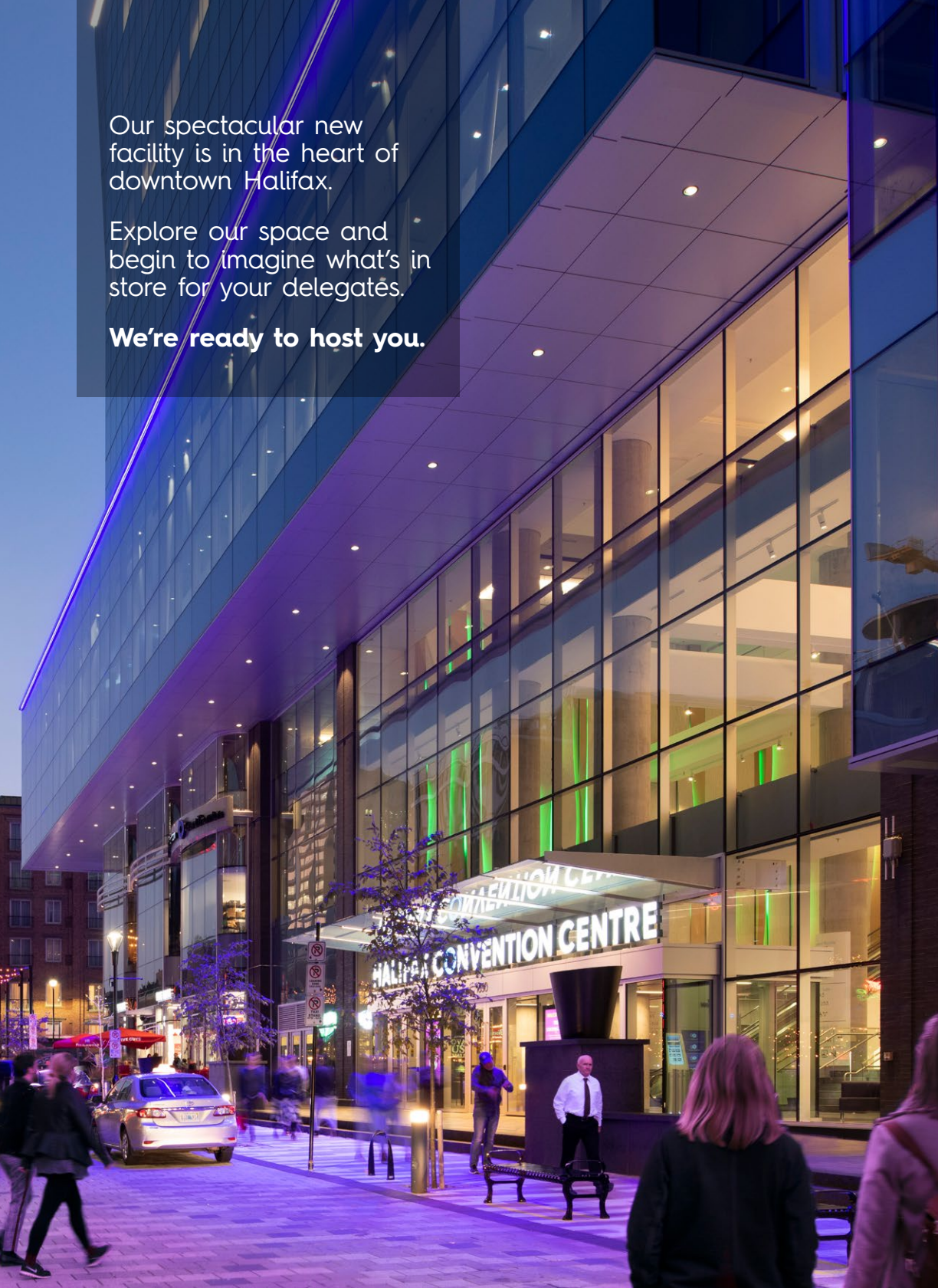
The natural world is never far from your door. Walk the waterfront, take in a farmers' market or explore a seaside trail in your unplanned moments.

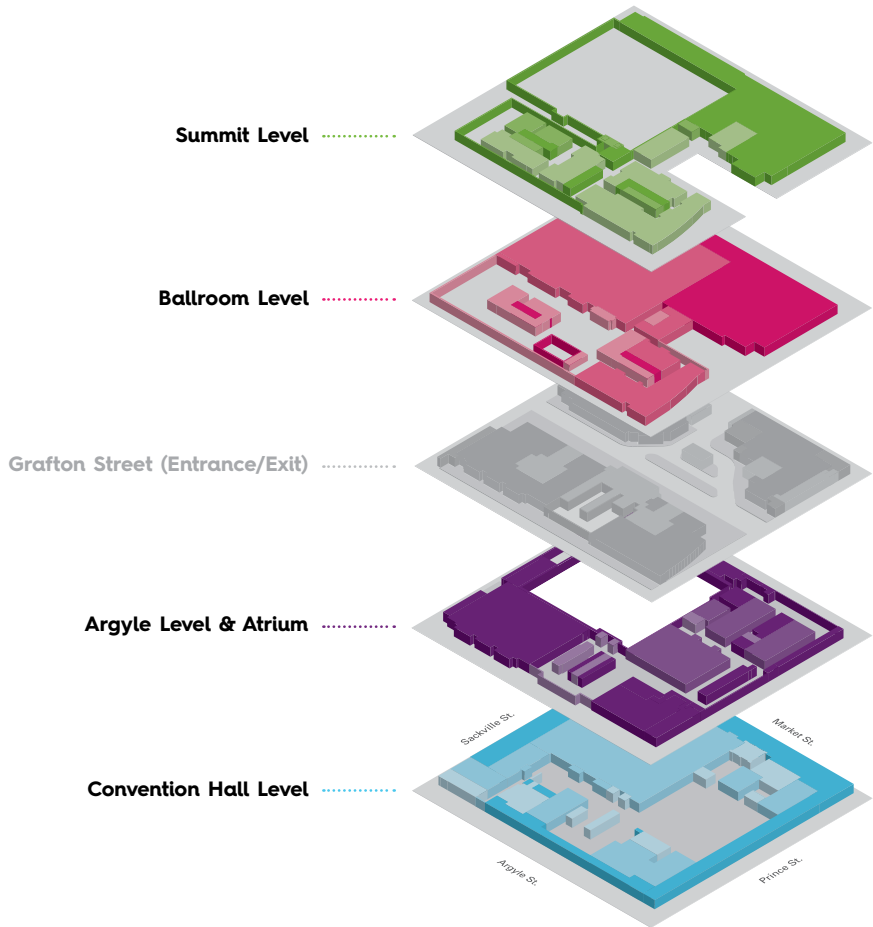
Business is booming in Nova Scotia, thanks to our 23 universities and colleges and exciting emerging sectors ranging from ICT and life sciences to ocean tech and financial services.

Our spectacular new
facility is in the heart of
downtown Halifax.

Explore our space and
begin to imagine what's in
store for your delegates.

We're ready to host you.

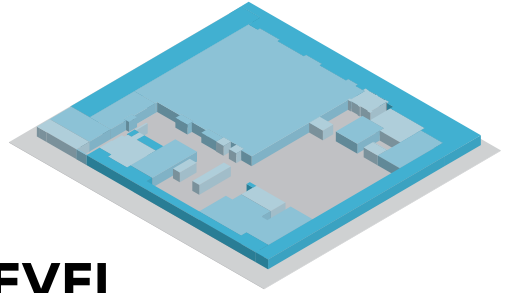




Facility at-a-glance:

- » Just 100 steps from the ocean, find natural light, expansive cityscapes and beautiful ocean views throughout our certified LEED Gold building.
- » Our bright and iconic Argyle Level & Atrium welcomes every guest to over 120,000 square feet of event space.
- » Spacious and flexible, our facility can divide into two independent convention levels, allowing for privacy and optimal traffic flow during multiple events.

We've got the perfect space for you: Look across the city from our spectacular 30,000 square foot ballroom, explore nearly 50,000 square feet of multi-purpose convention space, including the Convention Hall, or choose from 40,000 square feet of intimate meeting space.



CONVENTION HALL LEVEL

Our Convention Hall is our most versatile and flexible event space. Easy to access from our main Argyle Street entrance, this independent convention floor features a column-free hall with adjacent meeting space, ample pre-function space, and a secondary Convention Hall. Easily adjusted to suit your event's needs, this is the perfect space for trade shows, dinners or general sessions.

	L	W	SQ. FT.	Theatre AV/Stage	Classroom AV/Stage	Ovals of 10 AV/Stage	Reception	10x10 Booth	U Shape	Hollow Square	Board Room
Convention Hall	154	163	25000	2500	1200	1500	3000	144	*	*	*
Section C1	154	60	9240	650	460	500	650	51	*	*	*
Section C2	154	57	8778	860	453	500	1100	50	*	*	*
Section C3	56	46	2576	215	105	160	300	12	*	*	*
Section C4	91	46	4186	340	180	230	500	21	*	*	*
Sections C3-C4	147	46	6762	600	315	400	850	36	*	*	*
Sections C1-C2A	154	89	13700	1300	660	700	1625	77	*	*	*
Sections C2B-C3-C4	154	74	11300	1100	530	600	1400	60	*	*	*
Section C5	124	100	12400	*	*	500	1372	46	*	*	*
Room 101	48	31	1488	125	60	80	200	*	33	42	38
Room 102	48	31	1488	125	60	80	200	*	33	42	38
Room 103	59	28	1652	150	90	100	225	*	51	60	50
Room 104	59	29	1711	150	90	100	225	*	51	60	50
Room 105	37	29	1073	90	42	50	135	*	27	36	25
Room 106	29	33	957	60	42	50	60	*	27	36	25
Room 107	31	33	1023	90	42	50	125	*	27	36	25
Room 106-107	60	33	1980	180	100	110	250	*	51	60	50
Room 108	50	28	1400	130	70	90	175	*	45	54	38
Room 109	63	31	1953	180	95	120	250	*	51	60	50

TOTAL LEVEL SQ. FT. **50145**



*Space C2A is not available to book as its own rental space.

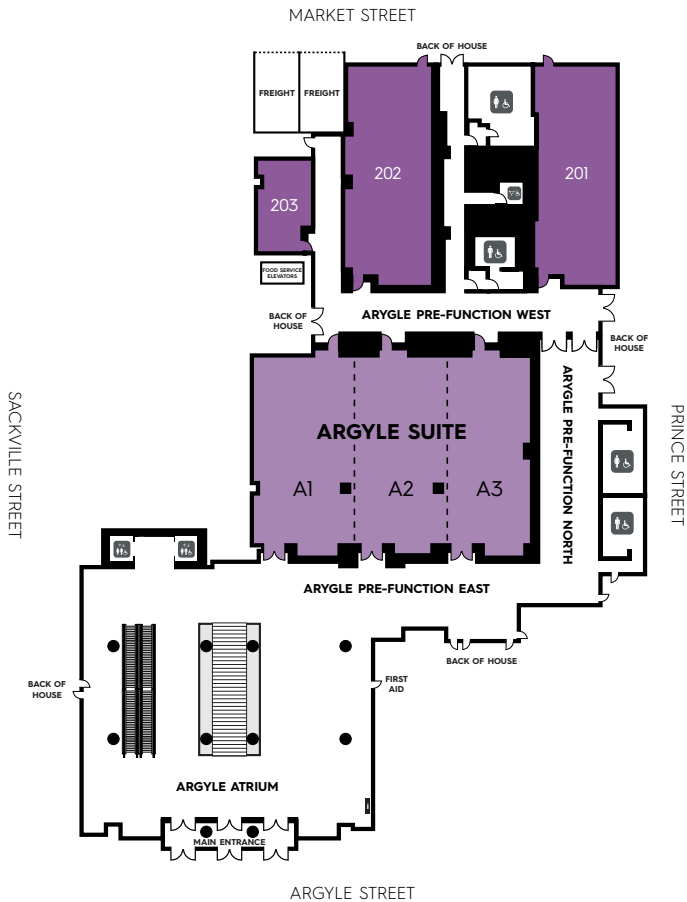
Level at-a-glance

- » Approximately 50,000 square feet of rentable space
- » Two signature spaces: main Convention Hall and secondary Convention Hall that combine to provide over 37,000 square feet of convention space
- » Main Convention Hall is column-free and divisible
- » 24 foot ceilings in main Convention Hall
- » Nine meeting rooms for breakout sessions



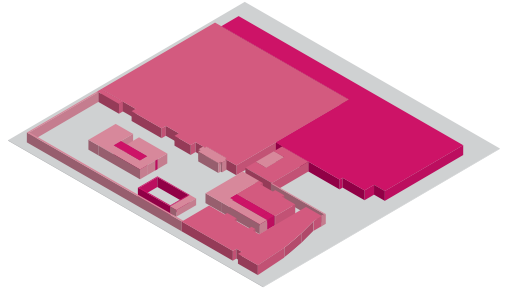
The versatile Argyle Suite can be used as three individual spaces or combined into one large ballroom, perfect for an upscale dinner or intimate conference.

	L	W	SQ. FT.	Theatre AV/Stage	Classroom AV/Stage	Ovals of 10 AV/Stage	Reception	10x10 Booth	U Shape	Hollow Square	Board Room
Argyle Suite (A1-A3)	66	95	6270	600	275	360	800	30	•	•	•
Section A1	66	32	2112	200	102	120	250	10	57	66	•
Section A2	66	32	2112	200	102	120	250	10	57	66	•
Section A3	66	31	2046	200	102	120	250	10	57	66	•
Sections A1-A2	66	64	4224	400	200	240	500	20	57	66	•
Sections A2-A3	66	63	4158	400	200	240	500	20	57	66	•
Room 201	71	30	2130	200	102	120	250	10	57	66	50
Room 202	71	30	2130	200	102	120	250	10	57	66	50
Room 203	35	19	665	30	18	20	50	•	15	18	20
TOTAL LEVEL SQ. FT.			11195								



Level at-a-glance

- » Signature lobby and welcoming area on the doorstep of Argyle Street
- » Flexible Atrium can act as a convenient registration area or delegate meeting point
- » Approximately 11,000 square feet of meeting space throughout six meeting rooms, including the versatile Argyle Suite



BALLROOM LEVEL

Our breathtaking Ballroom will take your event to a whole new level. Featuring 30,000 square feet, floor-to-ceiling windows and stunning panoramic views of the city, this is your perfect backdrop to any gala, banquet or conference plenary.

While your dinner or trade show is unfolding, use our flexible Ballroom Salon for receptions, lunch breaks, registration and more. The pre-function area is great for relaxed seating or your event’s internet café.

	L	W	SQ. FT.	Theatre AV/Stage	Classroom AV/Stage	Ovals of 10 AV/Stage	Reception	10x10 Booth	U Shape	Hollow Square	Board Room
Ballroom Pre-function			9500	*	*	*	1200	28	*	*	*
Ballroom Salon	108	56	6000	*	*	360	800	14	*	*	*
Ballroom	156	192	30000	2900	1600	2000	3000	170	*	*	*
Section B1	156	74	11544	975	570	660	975	67	*	*	*
Section B2	156	53	8268	725	380	440	950	41	*	*	*
Section B3	156	65	10140	950	500	550	1137	56	*	*	*
Sections B1-B2	156	127	19812	1825	1000	1300	2275	107	*	*	*
Sections B2-B3	156	118	18408	1725	950	1200	2275	106	*	*	*
Room 501	36	27	972	100	48	50	120	*	33	42	26
Room 502	36	30	1080	100	48	50	130	*	33	42	26
Room 501-502	36	57	2052	165	70	100	250	*	51	60	44
Room 503	36	48	1728	110	60	60	225	*	39	48	36
Room 504	32	31	992	50	24	30	120	*	21	30	20
Room 505	23	31	713	40	24	30	60	*	18	24	20
Room 506	27	31	837	55	24	30	100	*	18	24	20
Room 507	27	32	864	55	27	40	100	*	18	24	20
Room 506-507	27	63	1701	120	60	90	200	*	39	48	44
Room 508 (with Studio Kitchen)	30	25	750	40	27	30	60	*	18	24	20

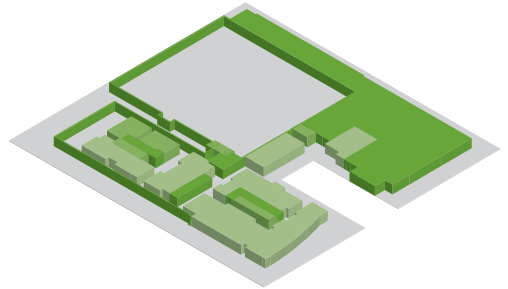
TOTAL LEVEL SQ. FT.

43936



Level at-a-glance

- » Over 40,000 square feet of rentable space with an additional 9,500 square feet of adjacent pre-function space
- » 30,000 square foot column-free Ballroom with 24 foot ceilings
- » 6,000 square foot Ballroom Salon
- » Eight breakout rooms, most with natural light
- » Room 508 boasts natural light and an intimate Studio Kitchen for unique culinary experiences

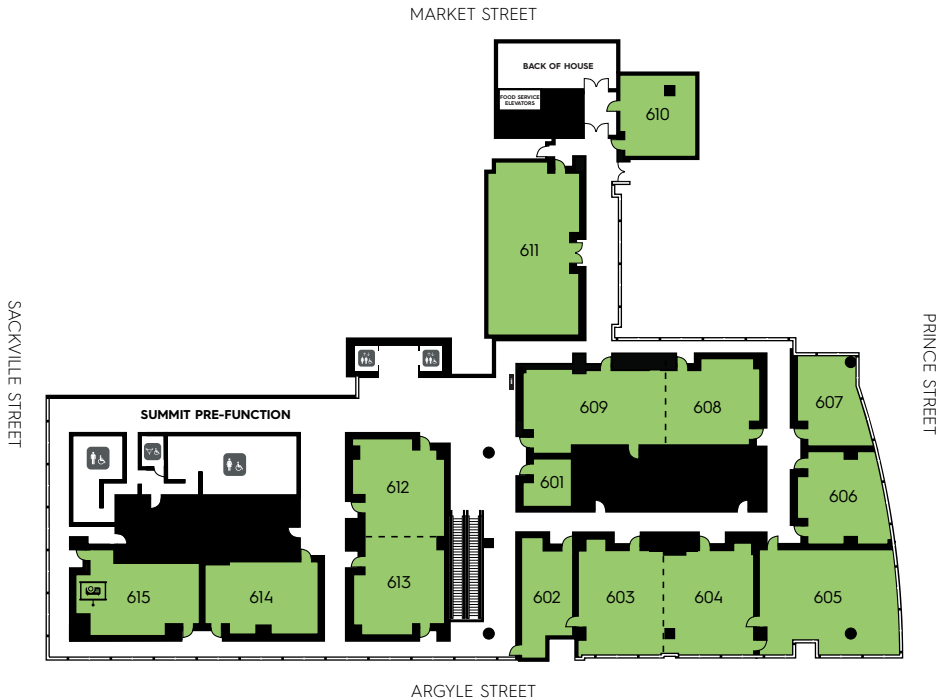


SUMMIT LEVEL

For an intimate meeting or lunch, our self-contained meeting rooms are always a simple choice. Used independently or with any other level as extra breakout space, they're accessible and come with every amenity you could ask for.

	L	W	SQ. FT.	Theatre AV/Stage	Classroom AV/Stage	Ovals of 10 AV/Stage	Reception	10x10 Booth	U Shape	Hollow Square	Board Room
Room 601	18	19	342	20	12	20	25	•	15	18	12
Room 602	29	20	580	40	18	30	50	•	24	30	20
Room 603	37	28	1036	100	48	50	120	•	33	42	26
Room 604	37	30	1110	100	48	50	130	•	33	42	26
Room 603-604	37	58	2146	180	77	120	250	•	51	60	44
Room 605	48	37	1776	110	60	60	225	•	39	48	36
Room 606	31	32	992	50	24	30	125	•	21	30	20
Room 607	31	23	713	40	24	30	60	•	18	24	20
Room 608	32	27	864	55	24	30	100	•	18	24	20
Room 609	49	27	1323	120	54	60	150	•	42	48	38
Room 608-609	81	27	2187	175	80	100	250	•	60	66	56
Room 610	28	26	728	30	18	20	40	•	21	24	20
Room 611	58	31	1798	155	72	100	225	•	45	54	44
Room 612	34	32	1088	85	40	50	120	•	27	36	26
Room 613	29	32	928	70	40	50	100	•	27	36	26
Room 612-613	63	32	2016	165	80	100	200	•	51	60	44
Room 614	40	24	960	90	45	50	100	•	30	36	32
Room 615 (Exec. Boardroom)	40	24	960	•	•	•	•	•	•	•	19

TOTAL LEVEL SQ. FT. 15198



Level at-a-glance

- » Approximately 15,000 square feet of meeting space
- » 15 flexible meeting rooms with quick, easy access from the Ballroom Level
- » Ample natural light throughout the level and in many of the rooms
- » Technology-enabled Executive Boardroom



Boston	1.25 hrs.
New York	1.75 hrs.
Ottawa	1.75 hrs.
Toronto	2 hrs.
Philadelphia	2 hrs.
Chicago	3 hrs.
Washington	4 hrs.
Reykjavik	4.5 hrs.
London	6 hrs.
Frankfurt	7 hrs.







Where it all
comes together.

HalifaxConventionCentre.com

We're ready to host you.

Connect with our sales team today.

1.902.421.8686 sales@halifaxconventioncentre.com