

WATERWORKSEVENTS

# Indulge in the art of *gathering.*

HERITAGE BUILDING

---

CULINARY DESTINATION

---

STUNNING EVENT SPACES

---

FULL SERVICE PLANNING



# Our History

The Waterworks Food Hall is situated on a site with a rich history. It initially served as a public market, then as a public works space, and now as a landmark destination offering a unique culinary experience.



## *A history of taste*

The site once housed St. Andrew's Market. Originally built in 1850, a grander market, designed in the Renaissance Revival style was opened in 1873 to house everything from fresh produce to a police station and public library. Due to waning popularity, the market was closed and the building was demolished in the late 1920s.

## *The industrial era*

The Waterworks Building was designed by Chief Architect J.J. Woolnough as part of a government initiative to create jobs during the Great Depression. Built in 1932 in the Art Deco style, it housed the City of Toronto's Water Works offices and machine shop until 2013 and was awarded heritage status in 2017.



## *An industrial evolution*

In 2016, Woodcliffe Landmark Properties, in partnership with MOD Developments, purchased the site as part of a mixed-use development that includes 297 condominiums, a 60,000 sq ft YMCA, 75 underground parking spaces, and a 55,000 sq ft European-inspired food hall with multiple event spaces.

# Unforgettable events happen *here*.

A culinary destination in the King West neighbourhood



With exposed brick walls, a soaring 44-foot ceiling, skylights, steel beams and brick columns, the Waterworks Food Hall is a stunning heritage building and a rich setting for your event. We offer over 12,000 sf of unique event space, perfect for private events, intimate gatherings, holiday celebrations, corporate functions, weddings and more. Choose from a restaurant-style catering menu, or let your guests explore a variety of fares and artisanal cuisines in the food hall.

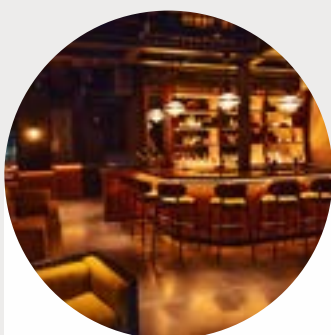
## *The Spaces*



### Event Hall\*

210 SEATED | 400 STANDING

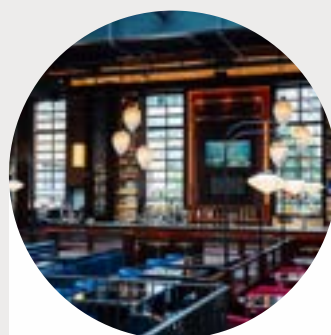
5,440 SF



### East Annex Lounge

80 SEATED | 115 STANDING

2,000 SF



### Civil Works Bar

90 SEATED | 100 STANDING

2,150 SF

\*Combines East Hall & West Hall



# Event Hall

The Event Hall combines two adjacent spaces, the East Hall and West Hall, to form our largest and most dramatic venue. Greet your guests in the lower level reception area off our Maud Street entrance with a private elevator to the main event. Located on the upper level, overlooking the vibrant Food Hall below, the Event Hall features natural light from overhead skylights and century old brick walls, steel beams, brick columns and polished concrete floors. It can accommodate up to 400 guests and is ideal for corporate events, trade shows, product launches and social gatherings.

## *Guest capacity*

SEATED	STANDING
210 guests	400 guests
5,440 SF	

## *Features*

Private bar  
Full catering  
Coat check  
Reception area  
AV equipment  
Wheelchair accessible  
High speed Wi-Fi  
Paid on-site parking

## *Rental Rate*

\$5,500-\$9,000

[FLOOR PLAN](#)



# East Hall

This elegant space, situated on the upper level of the food hall, offers polished concrete floors, heritage brick walls, steel chandeliers overlooking the food hall below. A private bar with a flat-screen TV and plug-and-play options is built-in, providing convenience for any event. Easily accessible by elevator or the main stairwell, this fully customizable venue is perfect for seated dinners, cocktail receptions, team-building activities, corporate meetings or intimate celebrations.

## *Guest capacity*

SEATED	STANDING
80 guests	150 guests
1,870 SF	

## *Features*

Built-in bar  
Full on-site catering  
Customizable layout  
Flat screen TV  
Wheelchair accessible  
High speed Wi-Fi  
On-site paid parking

## *Rental Rate*

\$1,500-\$3,500

[FLOOR PLAN](#)





# *East Hall photo gallery*





# West Hall

The West Hall is a sophisticated venue spanning two floors. Welcome your guests in our reception area off Maud Street, then ascend to the main event space. Sleek polished concrete floors, steel beams and mirrored walls create a contemporary atmosphere within a heritage building. The hall features a private restroom and convenient access to both a guest elevator from the main level and a service elevator from the loading dock. Versatile and adaptable, the West Hall can accommodate a variety of events, from intimate gatherings and formal dinners to product launches and corporate meetings.

## *Guest capacity*

SEATED	STANDING
130 guests	250 guests
3,560 SF	

## *Features*

Bar service  
Full catering  
Coat check  
Reception area  
Wheelchair accessible  
High speed Wi-Fi  
Paid on-site parking

## *Rental Rate*

\$3,500-\$5,500

[FLOOR PLAN](#)





## *West Hall photo gallery*





# Reception

Our ground-level reception area offers a sophisticated urban ambiance, perfect for intimate gatherings. With polished concrete floors and exposed heritage brick walls, this space exudes a contemporary yet timeless charm. A dramatic staircase to the upper level provides a striking focal point and is ideal for capturing memorable group photos. Whether celebrating an engagement, hosting an elegant dinner or enjoying pre-drinks before heading upstairs, this versatile space is ideal for your special occasion.

## *Guest capacity*

SEATED	STANDING
30 guests	50 guests
1,240 SF	

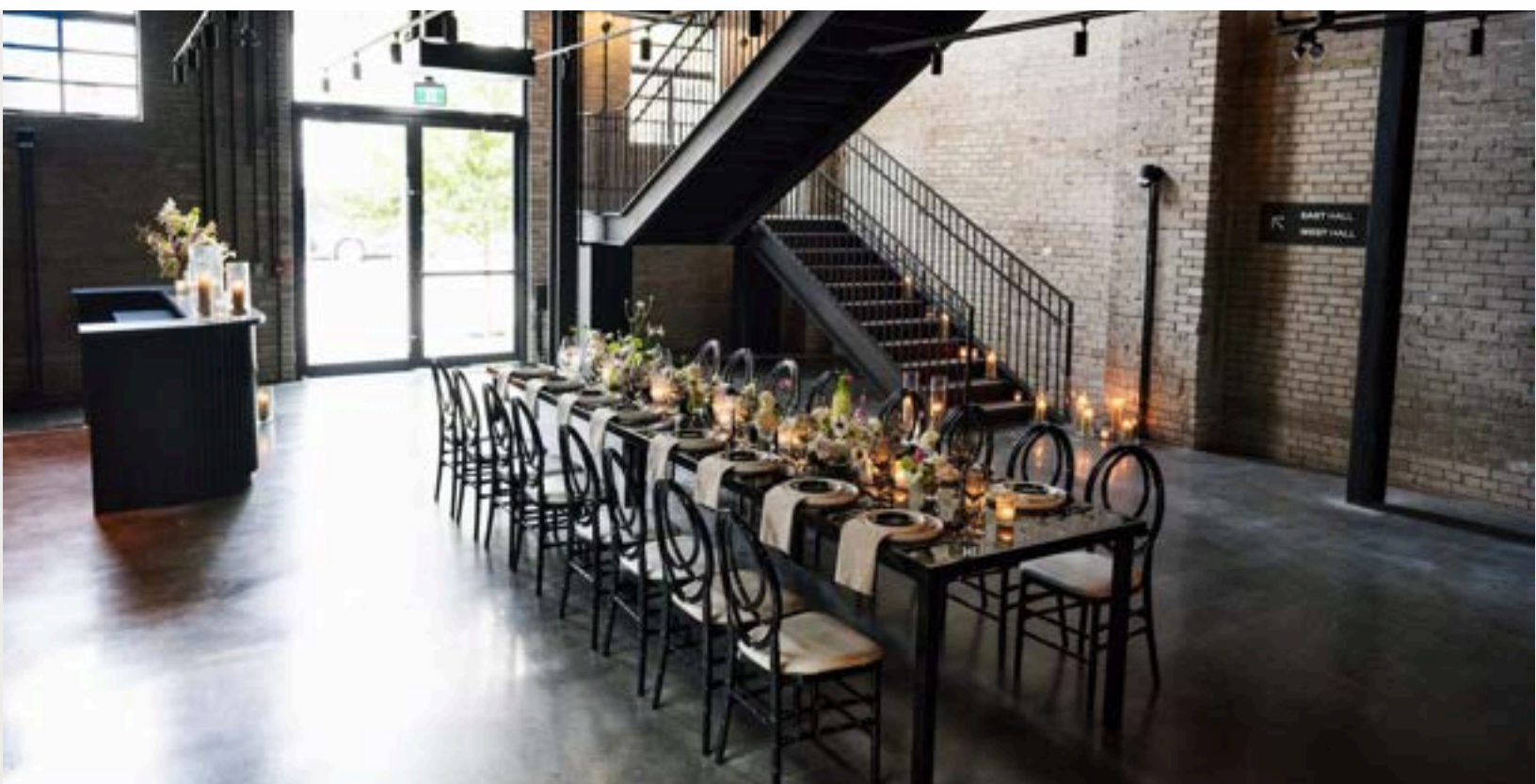
## *Features*

Bar service  
Cocktail catering  
Coat check  
Wheelchair accessible  
High-speed Wi-Fi  
Paid on-site parking

## *Rental Rate*

\$500-\$1,500

[FLOOR PLAN](#)



# *Reception photo gallery*





# Event Hall Spaces

The Event Hall is comprised of three spaces that can be rented exclusively or together. The West Hall is ideal for larger cocktail receptions, product launches and trade shows, while the East Hall features its own private bar and lends itself well to social gatherings and networking events.



## *Guest capacity*

### **WEST HALL**

130 seated  
250 standing reception  
150 theatre style  
3,560 SF

## *Features*

Bar service  
Full catering  
Coat check  
Reception area  
Plug & play sound system  
Wheelchair accessible  
High speed Wi-Fi  
Paid on-site parking

## *Rental rate*

\$3,500-\$5,500

**FLOOR PLAN**



## *Guest capacity*

### **EAST HALL**

80 seated  
150 standing reception  
100 theatre style  
1,870 SF

## *Features*

Built-in bar  
Full catering  
Flat screen TV  
Wheelchair accessible  
High-speed Wi-Fi  
Paid on-site parking

## *Rental rate*

\$1,500-\$3,500

**FLOOR PLAN**



## *Guest capacity*

### **RECEPTION**

30 seated  
50 standing  
1,240 SF

## *Features*

Bar service  
Cocktail catering  
Coat check  
High-speed Wi-Fi  
Paid on-site parking

## *Rental rate*

\$500-\$1,500

**FLOOR PLAN**

# East Annex Lounge

The East Annex Lounge is a sophisticated retreat, perfect for hosting exclusive events. Tucked away on the main level of the food hall, the lounge captures the elegance of 1930s speakeasies and features tufted leather banquet seating, marble tabletops and plush club chairs. Its intimate softly lit ambiance, full-service built-in bar, and walk-out patio make this an exceptional venue for corporate functions, personal gatherings and private celebrations.

## *Guest capacity*

SEATED	STANDING
80 guests	115 guests
2,000 SF	

## *Features*

- Private bar
- Cocktail style catering
- Gift card dining option
- Built-in lounge furniture
- Shared patio access
- Wheelchair accessible
- High speed Wi-Fi
- Paid on-site parking

## *Rental Rate*

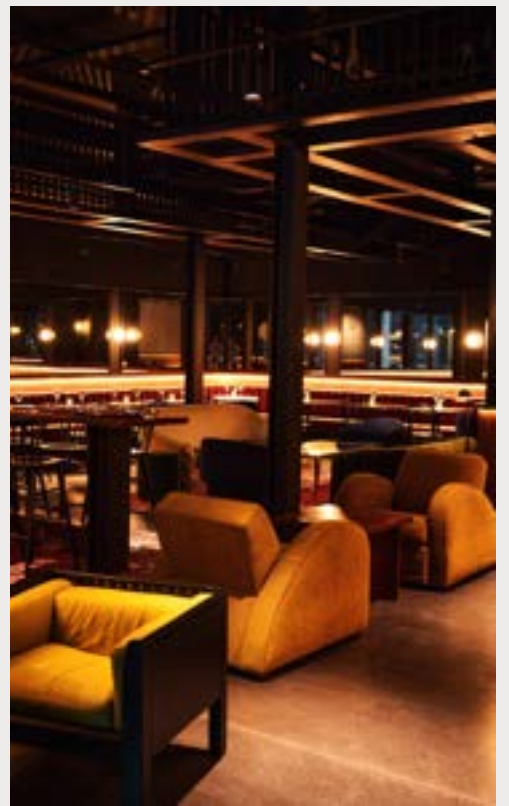
\$1,500-\$3,500

[FLOOR PLAN](#)





## *East Annex Lounge photo gallery*





# Civil Works Bar

Influenced by the building's rich history, Civil Works showcases an Art Deco-inspired design enhanced with modern touches. The space blends the industrial charm of the building with timeless glamour, featuring vintage furniture and rich materials that evoke the spirit of an era. Located on the mezzanine level off Brant Street, the bar overlooks the vibrant food hall below and offers a view of the art installations floating above. With ample seating, including a 25 foot, two sided communal bar, this space is truly unique for hosting celebrations.

## *Guest capacity*

SEATED	STANDING
90 guests	100 guests
2,150 SF	

## *Features*

Full private bar  
Built-in lounge furniture  
Communal bar seating  
Private washrooms  
High speed Wi-Fi  
Paid on-site parking

## *Rental Rate*

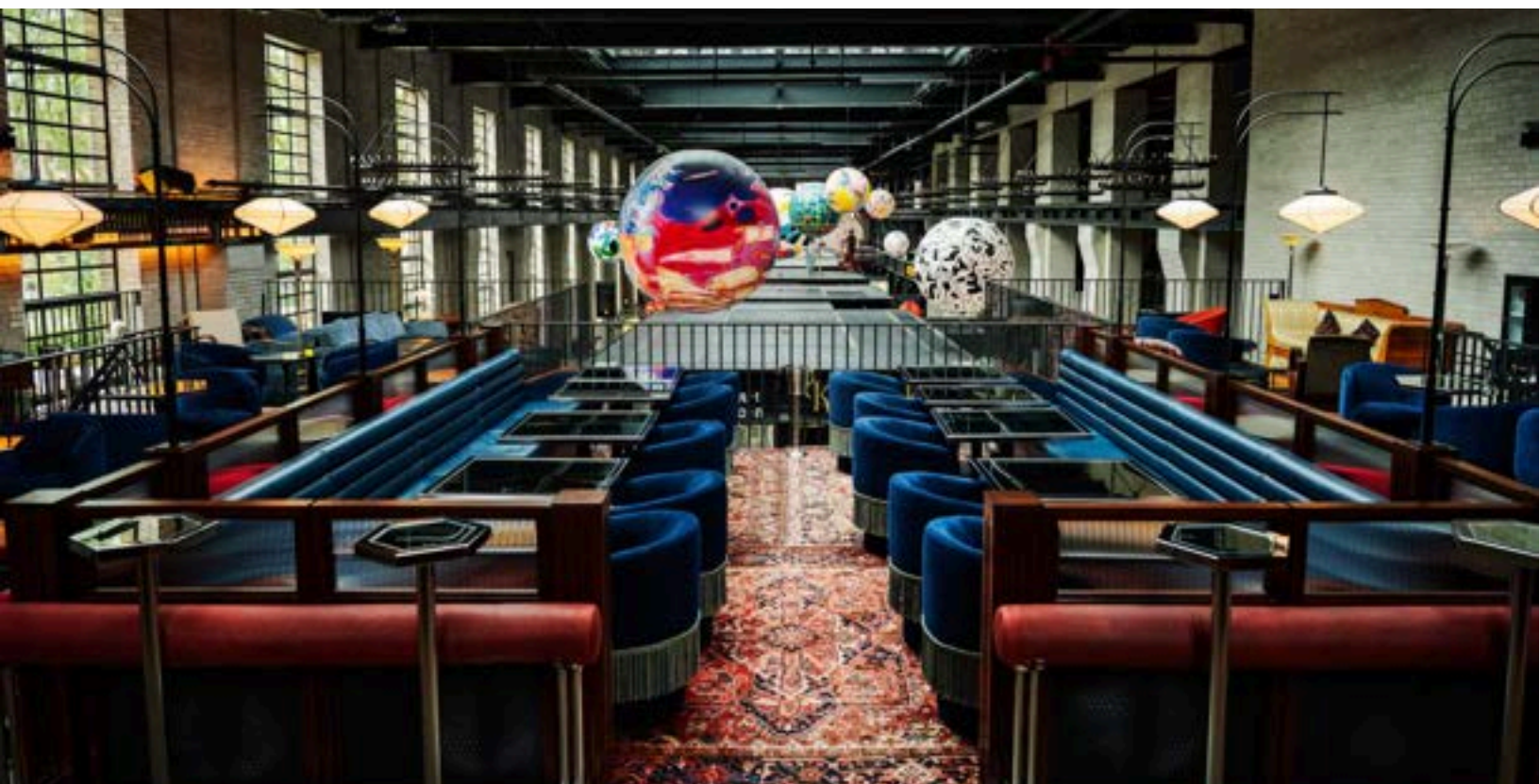
\$1,500-\$2,500

## *Rental Hours \**

Mon to Sun 8am - 3pm

**FLOOR PLAN**

\*For evening buy-outs, contact us for minimum spend and rental fees.





# *Civil Works photo gallery*





WATERWORKSEVENTS

# Indulge in the art of *gathering*.

---

GET IN TOUCH:

RACHAEL IRWIN, EVENT SALES MANAGER  
[RIRWIN@WATERWORKSEVENTS.COM](mailto:RIRWIN@WATERWORKSEVENTS.COM)

---

