

# AUTOMATIC CALORIMETER

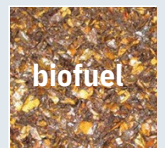
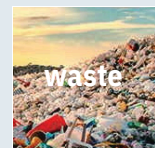
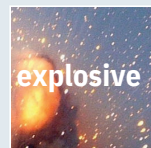
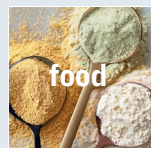
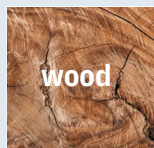
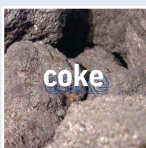
## IC 340



### Fully Automatic Usage and High Precision

Calorimeter is used for determining calorific value of solid and liquid samples.

For Every Sample Type



✉ [support@debyetechnic.com](mailto:support@debyetechnic.com)

☎ (+90312) 485 40 42

🌐 [www.debyetechnic.com](http://www.debyetechnic.com)

✉ [info@debyetechnic.com](mailto:info@debyetechnic.com)

☎ (+90312) 485 40 42

in DEBYE TECHNIC

# CALORIMETER IC 340



- Calorimeter IC340 provides a fully automatic operation for more precise calorific value measurements
- New design combined with our upgraded software technology for faster and easier applications.
- Easy to operate software with simple interface, automatized analysis control, data/graphic viewing and exporting, user-defined settings and simplified data handling, for scientific applications.

## Calorimeter IC340 - Technical Data

Calorimeter IC340	Information
Measuring Mode Water Filling and Draining Water Flow Meter	Isoperibol Automatic
Analysis Duration	Digital
Preparation Time for Operator	8 min. or 14 min.
Range of Measurement	~ 2 min.
Reproducibility	40 000 J
Operating Oxygen Pressure	RSD <0,05%
Vessel Test Pressure	30-40 bar
Vessel Material	min. 220 bar
Analysis Chamber Material	Stainless Steel
	Enhanced isolation material
Temperature Measurement	Digital Sensor
Temperature Measurement Resolution	0.0001 K
Ignition	Automatic
Gas Filling	Automatic
Degasification	Automatic
Water Filter	Included
Cooling / Heating Medium(OPTINAL)	Water Circulator
Halogen (Decomposition) Vessel	Optional
Rated Voltage	120V / 220V
Protection Class	III
Ambient Temperature	15-35 °C
Ambient Humidity	< 85%
Frequency	50/60 Hz.
Protection Class According to DIN	IP 20
Analysis According to	ISO 1928 ISO 18125 ISO 9831 ISO 1716 ASTM D5865 ASTM D5468 ASTM D4809 ASTM D240 ASTM E711 DIN 51 900 and other

Software	Information
Choosing Analysis Type	Calibration/Standard
Calculation	Gross/ Net Calorific Value
Recalculation on Previous Analysis	Yes
Excel / PDF Output	Yes
Results Unit	Cal/g J/g Btu/lb
Operating on Software While Analysis in Progress	Yes
During Analysis Graphic Progress	Yes
Analysis Graphic Output	Yes
Log File Encryption	Yes
User Registration	Unlimited
After Analysis	List and Review Analysis
Listing	Username/Analysis Name/Date
Service Authorisation	Full Authorisation Log File Access
Service Feedbacks	Warnings and Auto Problem Identification
Operating System	Windows
Interface	USB
Languages	EN/TR

Water Circulator	Information
Operating Options	Heating/Cooling
Temperature Range	5 / 40 °C
Bath Capacity	7 L
Temperature Stability	±0,03
Heating Capacity	1,1 kW
Cooling Capacity	0,25 kW
Power Requirements	220-240 V / 50-60 Hz



## CONTACT US FOR MORE INFORMATION

✉ [info@debyetechnic.com](mailto:info@debyetechnic.com)

🌐 [www.debyetechnic.com](http://www.debyetechnic.com)

☎ (+90312) 485 40 42

in DEBYE TECHNIC