

CALORIMETER

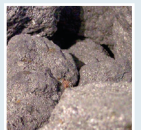
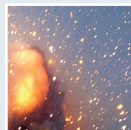
IC 210



Simple Usage and Precise Results

Calorimeter is used for determining calorific value of solid and liquid samples.

It can be used in a large variety of samples like COAL, COKE, WOOD, BIOFUEL, WASTE, EXPLOSIVE, OIL, FOOD and more.



ABOUT CALORIMETER IC 210



- Calorimeter IC210 provides fast and accurate calorific data for a wide range of samples.
- Special design combined with our software technology for highly precise analysis output and ease of use.
- Easy to operate software with simple interface, automatized analysis control, data/graphic viewing and exporting, user-defined settings and simplified data handling, for scientific applications.

Calorimeter IC210 - Technical Data

Calorimeter IC210	Information
Measuring Mode	Isoperibol
Water Filling and Draining	Automatic
Analysis Duration	10min. or 16 min.
Preperation Time for Operator	~ 2 min.
Range of Measurement	40 000 J
Reproducibility	RSD <0,05%
Operating Oxygen Pressure	30-40 bar
Vessel Test Pressure	min. 220 bar
Vessel Material	Stainless Steel
Temperature Measurement	Digital Sensor
Temperature Measurement Resollution	0.0001 K
Ignition	Automatic
Gas Filling	Oxygen Charger
Degasification	Manuel
Water Filter	Included
Cooling Medium	Water Circulator
Halogen (Decomposition) Vessel	Optional
Rated Voltage	120V / 220V
Dimensions	498x678x396 mm
Protection Class	III
Ambient Temperature	15-35 °C
Ambient Humidity	< 85%
Frequency	50/60 Hz.
Protection Class According to DIN	IP 20
Analysis According to	ISO 1928 ISO 18125 ISO 9831 ISO 1716 ASTM D5865 ASTM D5468 ASTM D4809 ASTM D240 ASTM E711 DIN 51 900 and other
Interface	USB
Languages	EN/TR

Software	Information
Choosing Analysis Type	Calibration/Standard
Calculation	Gross/ Net Calorific Value
Recalculation on Previous Analysis	Yes
Excel / PDF Output	Yes
Results Unit	Cal/g J/g Btu/lb
Operating on Software While Analysis Continues	Yes
During Analysis Graphic Progress	Yes
Analysis Graphic Output	Yes
File Encryption	Yes
User Registration	Unlimited
After Analysis	List and Review Analysis
Listing	Username/Analysis Name/Date
Service Authorisation	Full Authorisation Log File Access
Service Feedbacks	Warnings and Auto Problem Identification
Operating System	Windows

Water Circulator	Information
Operating Options	Heating/Cooling
Temperature Range	-20 / 100 °C
Bath Capacity	7 L
Temperature Stabilitiy	±0,03
Heating Capacity	1,1 kW
Cooling Capacity	0,25 kW
Power Requirements	220-240 V / 50-60 Hz



CONTACT US FOR MORE INFORMATION

✉ info@debyetechnic.com

☎ (+90312) 485 40 42

🌐 www.debyetechnic.com

📌 DEBYE TECHNIC

