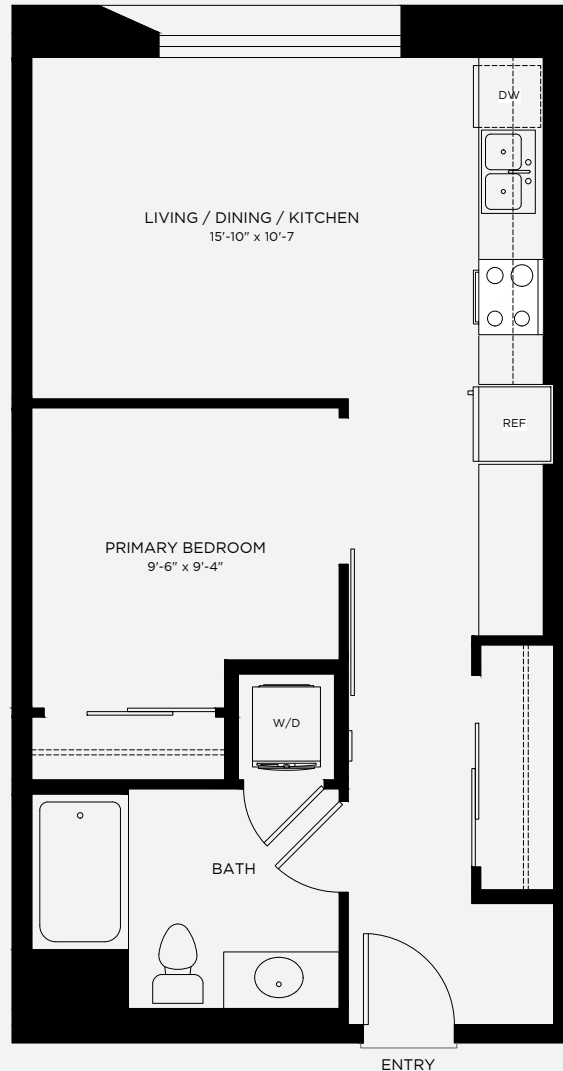


# S2 alt

Jr. 1 Bedroom  
1 Bathroom  
~ 550 sq. ft.



## CASPIAN

RESIDENCES

### Residence Features

- Keyless Entry
- Citywide Luxury Vinyl Plank Flooring Throughout
- Quartz Kitchen Counters
- Designer Cabinetry
  - White Pacific with Brushed Chrome Pulls (floors 3 – 5)
  - Qualicum Pacific with Brushed Chrome Pulls (floors 6 & 7)
- Grohe® Chrome Single Handle Pull-Down Kitchen Faucet
- Moen® Stainless Steel Kitchen Sink
- InSinkErator® Garbage Disposal
- Samsung® Stainless Steel Appliances
  - Electric Range
  - Microwave with Built-In Range Hood
  - Dishwasher, ENERGY STAR Rated®
  - Refrigerator, ENERGY STAR Rated®
- Whirlpool ENERGY STAR Certified® Front Load Washer & Dryer
- Grohe® Chrome Bathroom Fixtures
- Quartz Bathroom Counters
- Sterling 60" Vikrell® Tub/Shower Surround
- Wired for Fiber Internet with Speeds Up to 1GB
- High-Efficiency Dual-Pane Windows
- Window Treatments
- Private Patio or Balcony (select homes)

### Community Amenities

- ButterflyMX® Virtual Doorman
- Luxer One™ Package Lockers
- Community Lounge & Game Room
- Co-Working Lounge with Private Conference Room
- Two Landscaped Courtyards Featuring Lounge Seating, Cabanas, Spa, BBQ & Dining Areas
- Two Social Rooms with Outdoor Lounges Featuring Panoramic Views (located on 7th Floor)
- Fitness Center Featuring Peloton Bikes
- Bike Parking Storage Room
- Bike Repair & Maintenance Station
- Pet Wash Station
- Laundry Locker by Mulberry's®
- Common Areas WiFi
- Move-In Loading Dock

CaspianOakland.com

© 2025, 260 BB Way Development, LLC | These marketing materials are for informational purposes only. 260 BB Way Development reserves the right to change floor plans, elevations, specifications, materials, colors, features or sales pricing without prior notice. Such changes may not always be reflected in our model homes. All renderings, floor plans and handouts are artist's conceptions and are not intended to be an actual depiction of the buildings, walks, driveways or landscaping. Pricing, terms and features are subject to change without notice. Square footages are approximate. Homes pictured do not represent actual homes for sale. Real estate consulting, sales and marketing by Polaris Pacific – a licensed California, Arizona, Colorado, Hawaii, Oregon and Washington broker – CA DRE license #01499250.

