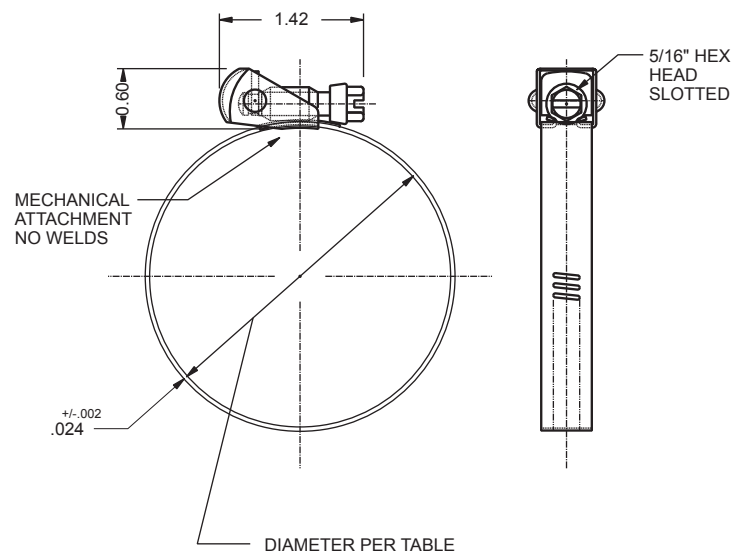
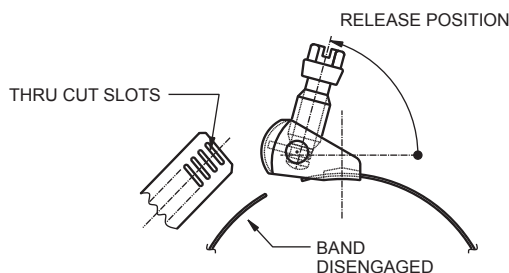
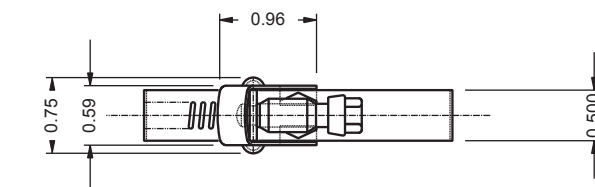


Type "F" Quick Release Clamp

- 200 series stainless steel band, housing and screw with 400 series stainless steel thrust block
- Easy to install and remove due to the swivel action locking of the screw
- Large clamping range, making them very versatile
- Typically used for closed system installations where the clamp must be opened to be fitted
- Other material configurations available

| Part Number | Diameter (inch) | | Diameter (mm) | |
|-------------|-----------------|--------|---------------|--------|
| | Open | Closed | Open | Closed |
| QR104S2 | 7.00 | 2.00 | 171 | 51 |
| QR128S2 | 8.500 | 2.00 | 216 | 51 |
| QR152S2 | 10.00 | 2.00 | 254 | 51 |
| QR188S2 | 12.25 | 2.00 | 311 | 51 |
| QR232S2 | 15.00 | 2.00 | 381 | 51 |
| QR258S2 | 16.63 | 2.00 | 422 | 51 |
| QR288S2 | 18.50 | 2.00 | 470 | 51 |
| QR312S2 | 20.00 | 2.00 | 508 | 51 |



Email Your Purchase Order
to orderentry@murraycorp.com