



Mountain apartment Proxima Centauri

| 2
Floor

| 3 bed
Layout

| 140 m²
Total area*

| BJ05
Apartment unit designation

All visible constellations and shining stars seem within arm's reach in God's Gift (Boží Dar). You can easily purchase one in the mountain residential complex Slunečná – for example, Proxima Centauri.

It is part of the Centaurus constellation and, after the Sun, is our nearest known star. As such, it has often been suggested as the first destination for a revolutionary interstellar journey. While such a journey has not taken place yet, your new mountain apartment will certainly not lack comfort.

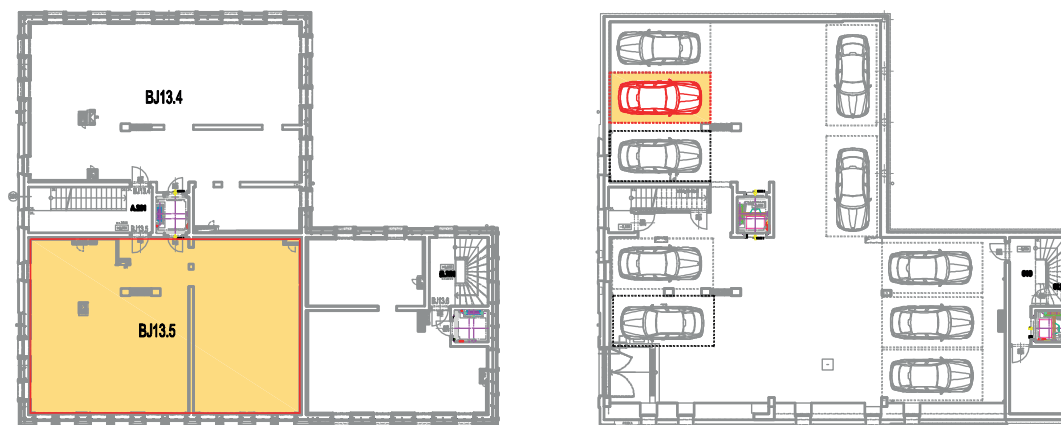
- Currently, the layout is being adjusted by the Ivanka Kowalski studio for maximum utilization of the living space.
- During Q1/2024, it is still possible to consider client modifications according to their requirements for the layout of the apartment unit.

This drawing was created for marketing purposes. The apartment area is in accordance with the project documentation. The developer reserves the right to make changes. Interior furnishings are not included. The scope of delivery is specified in the standard flat description.

* The total area of the apartment corresponds to the project documentation

The sale of mountain apartments is managed by the RWProjekt company.

+420 720 027 377
wolf@rwprojekt.cz



Slunečná & Slovanka
Krušné hory
Boží Dar