



DESIRA

# Mountain apartment **Asterion**

| 3  
Floor

| 1 bed/M  
Layout

| 56 m<sup>2</sup>  
Total area\*

| BJ09  
Apartment unit designation

**All visible constellations and shining stars seem within arm's reach in God's Gift (Boží Dar). You can easily purchase one in the mountain residential complex Slunečná – for example, Asterion.**

Its spectrum since 1943 has served as one of the anchor points for the classification of other stars, and there is no doubt that our Asterion will be a stable point in your universe. Additionally, in 2006, the star was marked as a place where we should look for extraterrestrial life. That is a different story, but to be sure, always check under the bed...

- Currently, the layout is being adjusted by the Ivanka Kowalski studio for maximum utilization of the living space.
- During Q1/2024, it is still possible to consider client modifications according to their requirements for the layout of the apartment unit.

This drawing was created for marketing purposes. The apartment area is in accordance with the project documentation. The developer reserves the right to make changes. Interior furnishings are not included. The scope of delivery is specified in the standard flat description.

\* The total area of the apartment corresponds to the project documentation

**The sale of mountain apartments is managed by the RWProjekt company.**

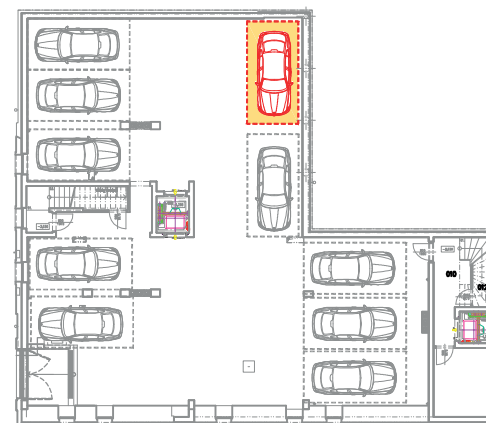
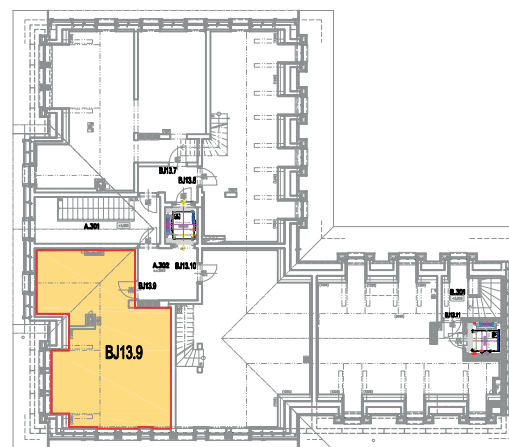
**+420 720 027 377**  
**wolf@rwprojekt.cz**



WESTERN VIEW WITH ENTRANCE



SOUTHERN VIEW



**Slunečná & Slovanka**

Krušné hory  
Boží Dar



DESIRA

# Mountain apartment **Bellatrix**

| 3  
Floor

| 1 bed/M  
Layout

| 117 m<sup>2</sup>  
Total area\*

| BJ10  
Apartment unit designation

**All visible constellations and shining stars seem within arm's reach in God's Gift (Boží Dar). You can easily purchase one in the mountain residential complex Slunečná – for example, Bellatrix.**

The blue giant hidden under the poetic name co-creates the Orion constellation and can be seen from all inhabited areas of our globe. The best time for observation, however, is from January to March, so a cosy base close to the sky will undoubtedly come in handy.

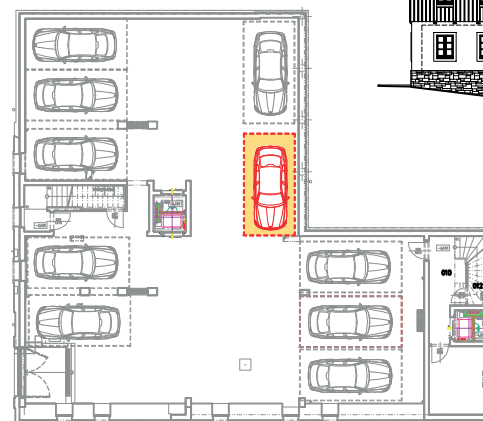
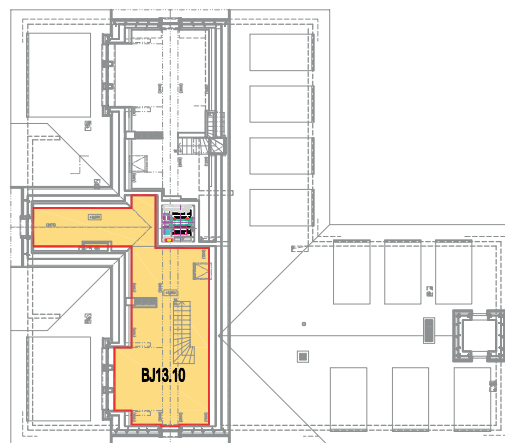
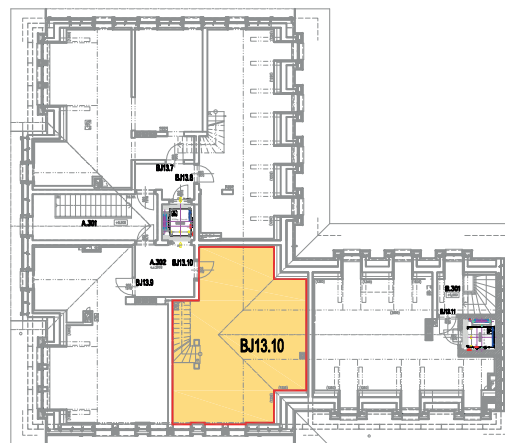
- Currently, the layout is being adjusted by the Ivanka Kowalski studio for maximum utilization of the living space.
- During Q1/2024, it is still possible to consider client modifications according to their requirements for the layout of the apartment unit.

This drawing was created for marketing purposes. The apartment area is in accordance with the project documentation. The developer reserves the right to make changes. Interior furnishings are not included. The scope of delivery is specified in the standard flat description.

\* The total area of the apartment corresponds to the project documentation

**The sale of mountain apartments is managed by the RWProjekt company.**

**+420 720 027 377**  
**wolf@rwprojekt.cz**



**Slunečná & Slovanka**

Krušné hory  
Boží Dar



DESIRA

# Mountain apartment Capella

3  
Floor

1 bed  
Layout

52 m<sup>2</sup>  
Total area\*

BJ11  
Apartment unit designation

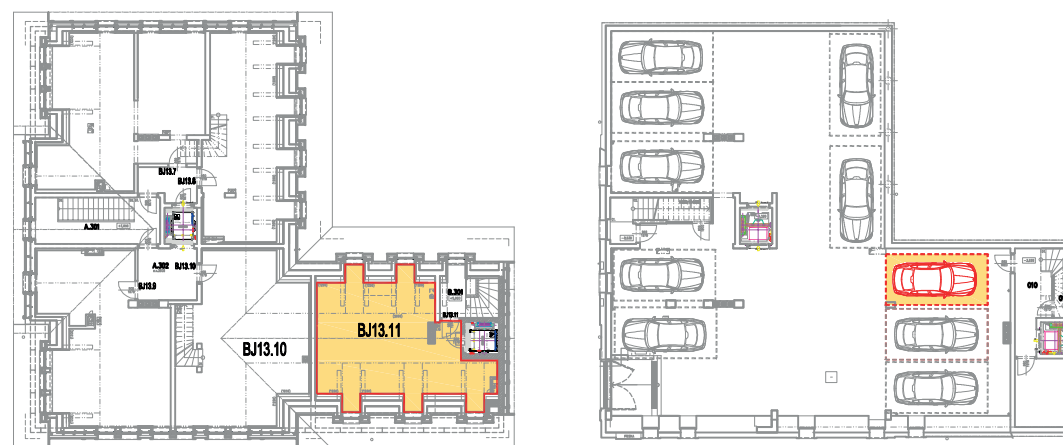
**All visible constellations and shining stars seem within arm's reach in God's Gift (Boží Dar). You can easily purchase one in the mountain residential complex Slunečná – for example, Capella.**

In our conditions, it is considered a circumpolar star – a star that never sets below the horizon. However, Capella is so close that, during observation in mountainous terrain, it may momentarily get lost. But you will undoubtedly always find your way back to Slunečná.

- Currently, the layout is being adjusted by the Ivanka Kowalski studio for maximum utilization of the living space.
- During Q1/2024, it is still possible to consider client modifications according to their requirements for the layout of the apartment unit.

This drawing was created for marketing purposes. The apartment area is in accordance with the project documentation. The developer reserves the right to make changes. Interior furnishings are not included. The scope of delivery is specified in the standard flat description.

\* The total area of the apartment corresponds to the project documentation



**The sale of mountain apartments is managed by the RWProjekt company.**

**+420 720 027 377**  
**wolf@rwprojekt.cz**



**Slunečná & Slovanka**

Krušné hory  
Boží Dar





# Mountain apartment **Electra**

| 3  
Floor

| 1 bed  
Layout

| 64 m<sup>2</sup>  
Total area\*

| BJ07  
Apartment unit designation

**All visible constellations and shining stars seem within arm's reach in God's Gift (Boží Dar). You can easily purchase one in the mountain residential complex Slunečná – for example, Electra.**

It gained its name from one of the seven mythological Pleiades and forms one of the bright points of the Taurus constellation. Even though it may occasionally be occulted by the moon, you will not have to fear any eclipses in your mountain apartment.

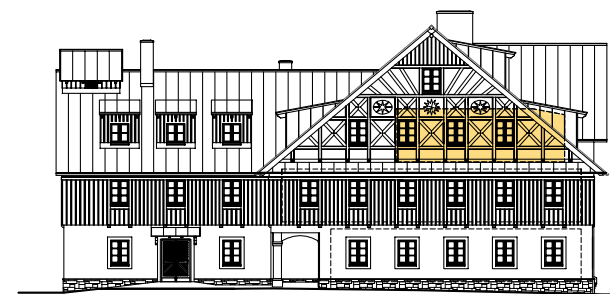
- Currently, the layout is being adjusted by the Ivanka Kowalski studio for maximum utilization of the living space.
- During Q1/2024, it is still possible to consider client modifications according to their requirements for the layout of the apartment unit.

This drawing was created for marketing purposes. The apartment area is in accordance with the project documentation. The developer reserves the right to make changes. Interior furnishings are not included. The scope of delivery is specified in the standard flat description.

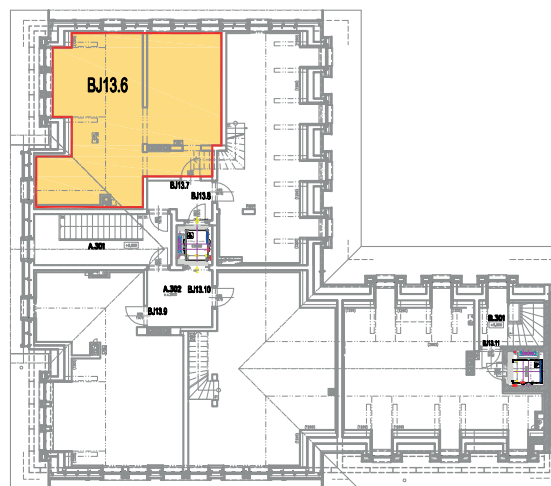
\* The total area of the apartment corresponds to the project documentation



WESTERN VIEW WITH ENTRANCE



NORTHERN VIEW



**The sale of mountain apartments is managed by the RWProjekt company.**

**+420 720 027 377**  
**wolf@rwprojekt.cz**



**Slunečná & Slovanka**

Krušné hory  
Boží Dar



# Mountain apartment **Maia**

| 2  
Floor

| 1 bed  
Layout

| 75 m<sup>2</sup>  
Total area\*

| BJ06  
Apartment unit designation

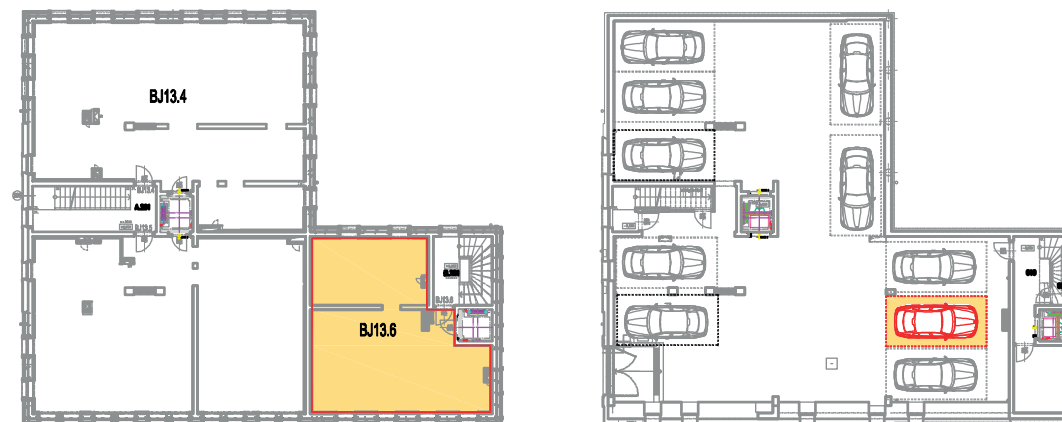
**All visible constellations and shining stars seem within arm's reach in God's Gift (Boží Dar). You can easily purchase one in the mountain residential complex Slunečná – for example, Maia.**

The star named after the oldest mythological Pleiad is a shining part of the Taurus constellation and promises only the brightest futures for your new mountain apartment.

- Currently, the layout is being adjusted by the Ivanka Kowalski studio for maximum utilization of the living space.
- During Q1/2024, it is still possible to consider client modifications according to their requirements for the layout of the apartment unit.

This drawing was created for marketing purposes. The apartment area is in accordance with the project documentation. The developer reserves the right to make changes. Interior furnishings are not included. The scope of delivery is specified in the standard flat description.

\* The total area of the apartment corresponds to the project documentation



**The sale of mountain apartments is managed by the RWProjekt company.**

**+420 720 027 377**  
**wolf@rwprojekt.cz**



**Slunečná & Slovanka**  
Krušné hory  
Boží Dar



DESIRA

# Mountain apartment Naos

| 1  
Floor

| 1 bed  
Layout

| 65 m<sup>2</sup>  
Total area\*

| BJ03  
Apartment unit designation

**All visible constellations and shining stars seem within arm's reach in God's Gift (Boží Dar). You can easily purchase one in the mountain residential complex Slunečná – for example, Naos.**

It can boast the title of the brightest star in the Milky Way, and undoubtedly, your apartment in Slunečná will be a bright spot in your life.

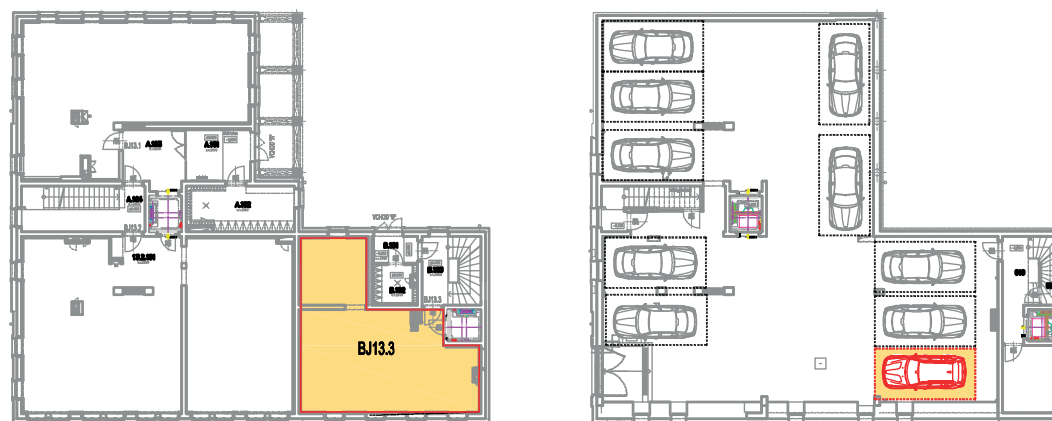
- Currently, the layout is being adjusted by the Ivanka Kowalski studio for maximum utilization of the living space.
- During Q1/2024, it is still possible to consider client modifications according to their requirements for the layout of the apartment unit.

This drawing was created for marketing purposes. The apartment area is in accordance with the project documentation. The developer reserves the right to make changes. Interior furnishings are not included. The scope of delivery is specified in the standard flat description.

\* The total area of the apartment corresponds to the project documentation

**The sale of mountain apartments is managed by the RWProjekt company.**

**+420 720 027 377**  
**wolf@rwprojekt.cz**



**Slunečná & Slovanka**  
Krušné hory  
Boží Dar





DESIRA

# Mountain apartment **Polaris**

| 2  
Floor

| 2 bed  
Layout

| 143 m<sup>2</sup>  
Total area\*

| BJ04  
Apartment unit designation

**All visible constellations and shining stars appear within arm's reach in God's Gift (Boží Dar). You can easily purchase one in the mountain residential complex Slunečná – for example, Polaris.**

The brightest star in the Ursa Minor constellation is currently the North Star and will undoubtedly remain so for millions of years.

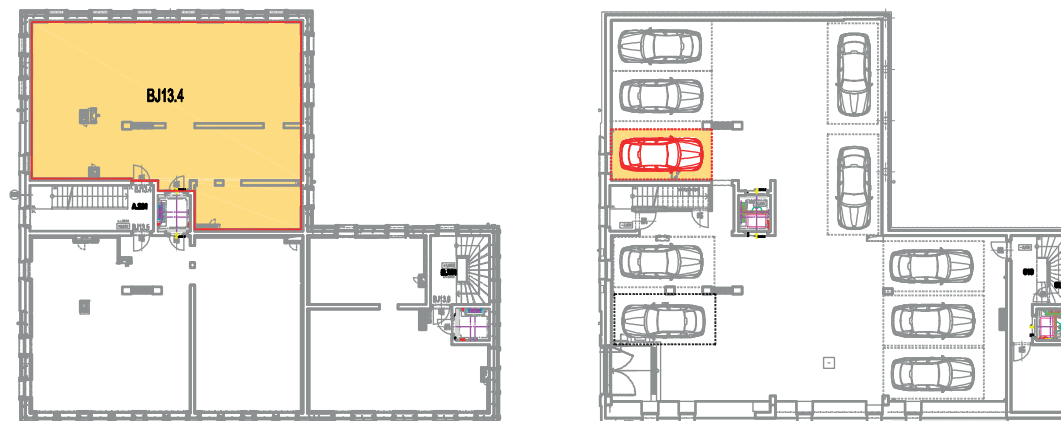
- Currently, the layout is being adjusted by the Ivanka Kowalski studio for maximum utilization of the living space.
- During Q1/2024, it is still possible to consider client modifications according to their requirements for the layout of the apartment unit.

This drawing was created for marketing purposes. The apartment area is in accordance with the project documentation. The developer reserves the right to make changes. Interior furnishings are not included. The scope of delivery is specified in the standard flat description.

\* The total area of the apartment corresponds to the project documentation

**The sale of mountain apartments is managed by the RWProjekt company.**

**+420 720 027 377**  
**wolf@rwprojekt.cz**



**Slunečná & Slovanka**  
Krušné hory  
Boží Dar



DESIRA

# Mountain apartment Proxima Centauri

| 2  
Floor

| 3 bed  
Layout

| 140 m<sup>2</sup>  
Total area\*

| BJ05  
Apartment unit designation

**All visible constellations and shining stars seem within arm's reach in God's Gift (Boží Dar). You can easily purchase one in the mountain residential complex Slunečná – for example, Proxima Centauri.**

It is part of the Centaurus constellation and, after the Sun, is our nearest known star. As such, it has often been suggested as the first destination for a revolutionary interstellar journey. While such a journey has not taken place yet, your new mountain apartment will certainly not lack comfort.

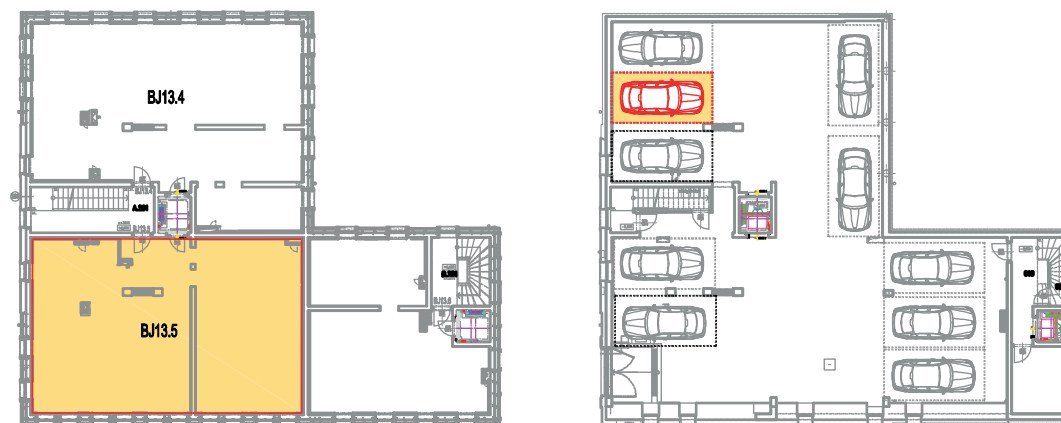
- Currently, the layout is being adjusted by the Ivanka Kowalski studio for maximum utilization of the living space.
- During Q1/2024, it is still possible to consider client modifications according to their requirements for the layout of the apartment unit.

This drawing was created for marketing purposes. The apartment area is in accordance with the project documentation. The developer reserves the right to make changes. Interior furnishings are not included. The scope of delivery is specified in the standard flat description.

\* The total area of the apartment corresponds to the project documentation

**The sale of mountain apartments is managed by the RWProjekt company.**

**+420 720 027 377**  
**wolf@rwprojekt.cz**



**Slunečná & Slovanka**  
Krušné hory  
Boží Dar





DESIRA

# Mountain apartment Regulus

| 1  
Floor

| 1 bed  
Layout

| 83 m<sup>2</sup>  
Total area\*

| BJ01  
Apartment unit designation

**All visible constellations and shining stars seem within arm's reach in God's Gift (Boží Dar). You can easily purchase one in the mountain residential complex Slunečná – for example, Regulus.**

And you will live there truly royally! The name can be translated from Latin as "Little King" or "Prince," and it is expected to live up to its name. Together with its three neighbours, it used to belong to the so-called royal stars – the year got divided into four seasons because of them.

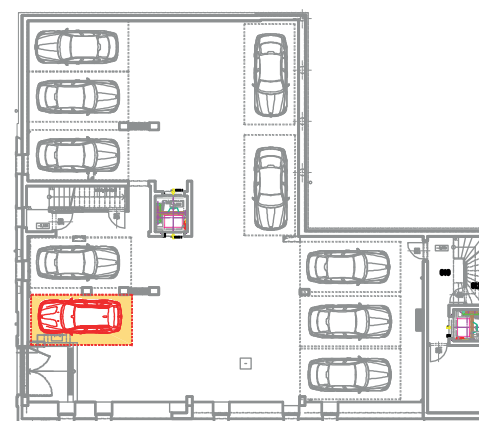
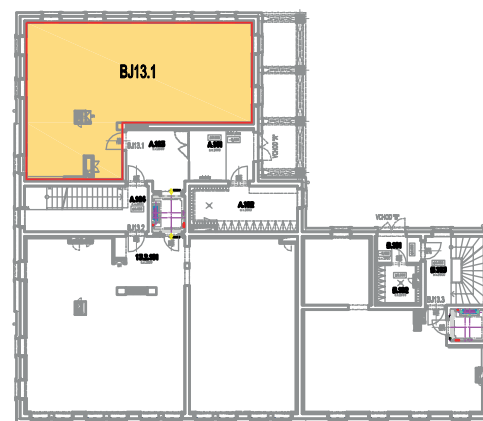
- Currently, the layout is being adjusted by the Ivanka Kowalski studio for maximum utilization of the living space.
- During Q1/2024, it is still possible to consider client modifications according to their requirements for the layout of the apartment unit.

This drawing was created for marketing purposes. The apartment area is in accordance with the project documentation. The developer reserves the right to make changes. Interior furnishings are not included. The scope of delivery is specified in the standard flat description.

\* The total area of the apartment corresponds to the project documentation

**The sale of mountain apartments is managed by the RWProjekt company.**

**+420 720 027 377**  
**wolf@rwprojekt.cz**



**Slunečná & Slovanka**  
Krušné hory  
Boží Dar



DESIRA

# Mountain apartment Sirius

| 1  
Floor

| 3 bed  
Layout

| 140 m<sup>2</sup>  
Total area\*

| BJ02  
Apartment unit designation

**All visible constellations and shining stars seem within arm's reach in God's Gift (Boží Dar). You can easily purchase one in the mountain residential complex Slunečná – for example, Sirius.**

Nick-named Dog Star, it is visible from every inhabited place on Earth. It is the brightest star in the sky and has its fixed place in the Canis Major constellation. However, there is no need to worry – the Slunečná residence is open to dogs of all sizes.

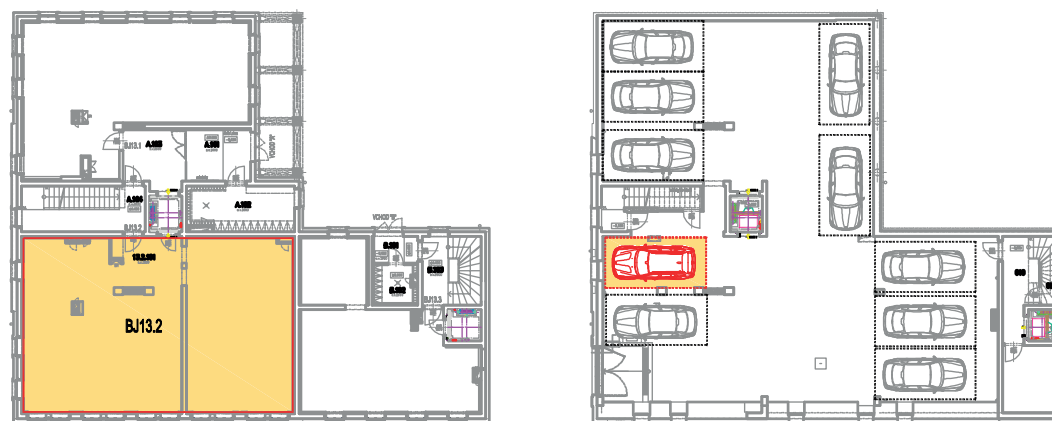
- Currently, the layout is being adjusted by the Ivanka Kowalski studio for maximum utilization of the living space.
- During Q1/2024, it is still possible to consider client modifications according to their requirements for the layout of the apartment unit.

This drawing was created for marketing purposes. The apartment area is in accordance with the project documentation. The developer reserves the right to make changes. Interior furnishings are not included. The scope of delivery is specified in the standard flat description.

\* The total area of the apartment corresponds to the project documentation

**The sale of mountain apartments is managed by the RWProjekt company.**

**+420 720 027 377**  
**wolf@rwprojekt.cz**



**Slunečná & Slovanka**  
Krušné hory  
Boží Dar



# Mountain apartment **Vega**

3  
Floor

1 bed/M  
Layout

87 m<sup>2</sup>  
Total area\*

BJ08  
Apartment unit designation

**All visible constellations and shining stars seem within arm's reach in God's Gift (Boží Dar). You can easily purchase one in the mountain residential complex Slunečná – for example, Vega.**

Known as the brightest star in the Lyra constellation, apart from the Sun, it is considered the most studied of stars. The mountain apartment of the same name will undoubtedly prove to be an excellent study object.

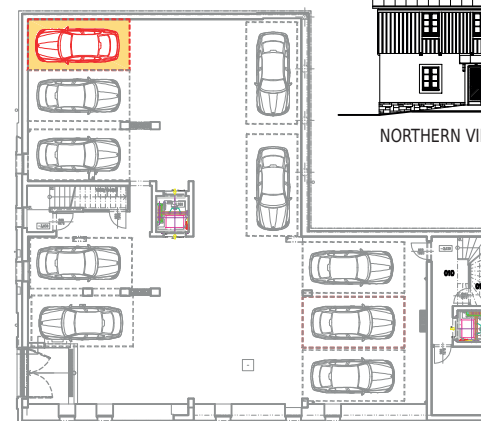
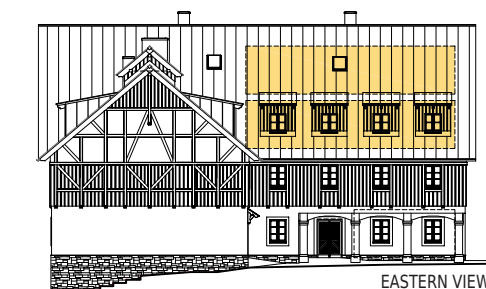
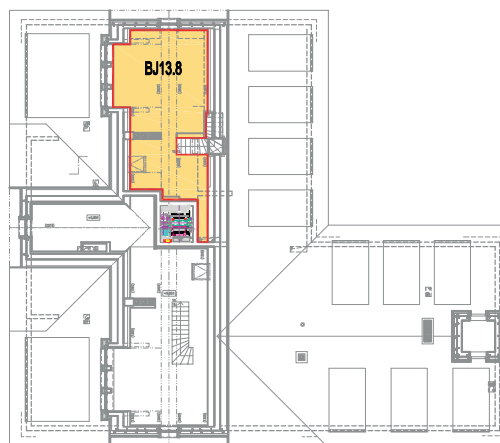
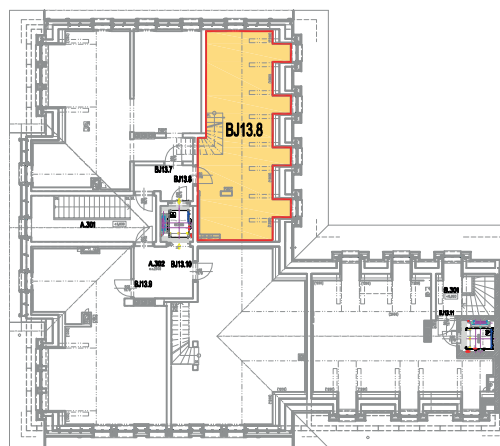
- Currently, the layout is being adjusted by the Ivanka Kowalski studio for maximum utilization of the living space.
- During Q1/2024, it is still possible to consider client modifications according to their requirements for the layout of the apartment unit.

This drawing was created for marketing purposes. The apartment area is in accordance with the project documentation. The developer reserves the right to make changes. Interior furnishings are not included. The scope of delivery is specified in the standard flat description.

\* The total area of the apartment corresponds to the project documentation

**The sale of mountain apartments is managed by the RWProjekt company.**

**+420 720 027 377**  
**wolf@rwprojekt.cz**



**Slunečná & Slovanka**  
Krušné hory  
Boží Dar