

# Custom Multi-Panel Garden Specifications

## Turnkey Garden Installations

Crafted with Preserved Plants & Installed by GOTW Trained Crew



| Model        | Gardens with Moss Combinations                | Gardens with Foliage with Flower Foliage                               |
|--------------|---|--|
| Tier 1       | Up to 50% Moss coverage over Flat Moss canvas | Up to 50% Foliage/Moss coverage over Flat Moss canvas                  |
| Special Tier | Ball Moss or Lichen dominant designs          | 50 to 75% Foliage coverage over Flat Moss, Ball Moss, or Lichen canvas |
| Tier 2       | N/A   | 75 to 100% Foliage/Moss coverage over Flat Moss canvas                 |

### Garden Panel Components:

- Preserved Plants:** Preserved Moss, Lichen, Forest, Grass, Fern, Eucalyptus, Flower Foliage & Hydrangea species.
- Backing Board:** ¼" thick maple plywood laminated with formaldehyde-free (NAF-No-Added formaldehyde), soy-based assembly process.
- Adhesive:** A solvent-free adhesive that meets the strict requirements of Indoor Environmental Quality (IEQ).
- Standard Frame (Add on):** ¾" thick, 3" deep AWI premium-grade wood with satin white or satin black finish, includes ¾" plywood backing. (Typical Section details on page 4-6).
- Metal Angle 1 (Add on):** 1/16" thick, 1 1/4" x 1 1/4" metal angle with black finish. (Typical Section details on page 7-9).
- Metal Angle 2 (Add on):** 1/8" thick, 2" x 2" metal angle with black finish, includes ¾" plywood backing. (Typical Section details on page 10-12).
- Frameless Finish (Add on):** Special finish to disguise the edges of the garden panels. (Typical Section details on page 13-15).

While all gardens are custom created, it's important to maintain the structural integrity & morphology of the preserved plants used. To maintain the utmost longevity & visual standards, below are the requirements for sizes:

| Model        | Size/Minimum   |
|--------------|--|
| Tier 1       | 12" minimum. For sizes 6" – 12" is priced at Special Tier level. Less than 6" not possible |
| Special Tier | 4" minimum for Lichen and 6" minimum for Flat Moss canvas designs                          |
| Tier 2       | 6" minimum. Preserved plant selection may be limited due to scale                          |

### Weight:

**lbs 1.4 - 1.8/sqft** depending on preserved plants and Model# selection (excludes add on frame weight).

### How to Specify:

- Pattern** is rendered by Garden on the Wall<sup>®</sup> for approval as a part of the submittal process.
- Color/Plant Species** TBD during Design Rendering as a part of the submittal process.
- Size TBD per CD.** All dimensions will be coordinated with Shop Drawings and verified in the field.

### Installation & Edge Details:

- Minimum of 1" depth required** for seamless integration that ensures the edges of our gardens panels are disguised. An integration that conceals the edges of our gardens panels is essential. If a recessed installation isn't possible, an alternative edging solution - such as picture framing, trim, metal angles, or a frameless finish must be used (to be provided by GOTW or others.)
- ¾" Plywood Blocking** to be provided by GC.
- Garden panels are attached** to the vertical surfaces with screws.
- A 7-year warranty certificate** is to be issued by Garden on the Wall<sup>®</sup> upon completion of the Installation and Touch-up/ Micro-mossing.

### Spec Division:

Division 9 Special Wall Surfaces 097700.

**3\_Part Spec** available upon request.

### Sustainability, Health & Safety Credentials with 3<sup>rd</sup> Party Testing:

- Publishing Health Product Declaration HPD (v2.3).
- Red List Free
- Flame Spread and Smoke Index per ASTM E84: Class 1 or A.
- Declare Label
- 100% Bio-based Carbon Content per ASTM 6866.
- Complies with:
  - California Department of Public Health (CDPH) VOC standards for both Classroom and Office Scenarios.
  - BREEAM Building Standards.
- Listed in:
  - Mindful MATERIALS database.
  - Sustainable Minds Transparency Catalog.

### Credit/Points Contribution:

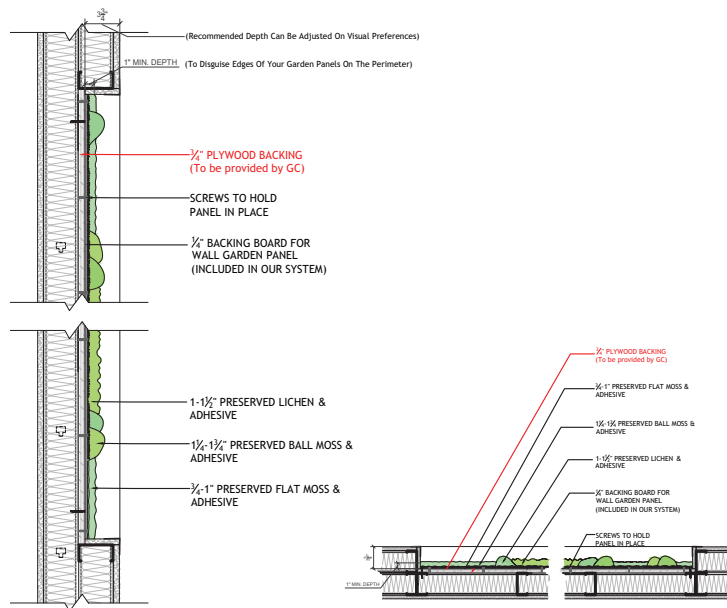
- LEED<sup>®</sup> v4 and LEED<sup>®</sup> v4.1
- The WELL v2 Building Standard™
- fitwel<sup>®</sup>

### NRC/Sound Absorption Test:

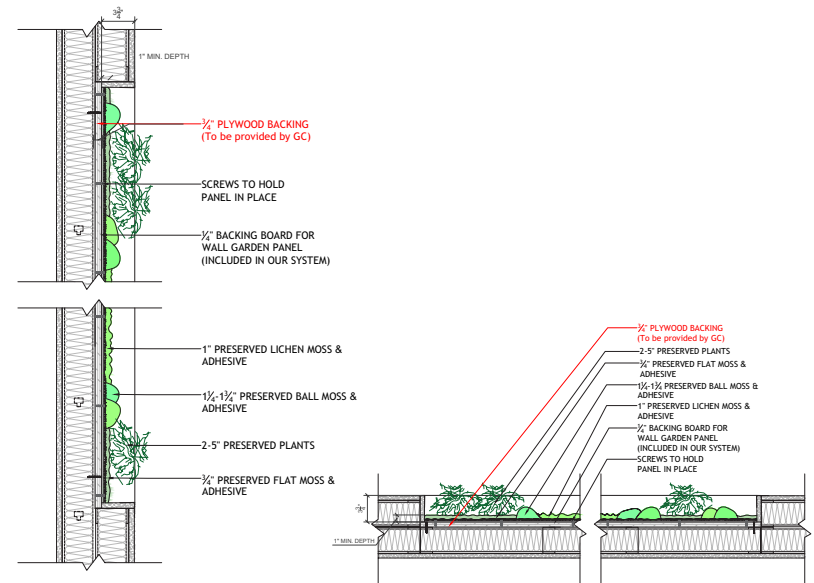
**0.44 for all Model#** Selections.

Please contact [info@gardenonthewall.com](mailto:info@gardenonthewall.com) for additional documentation support.

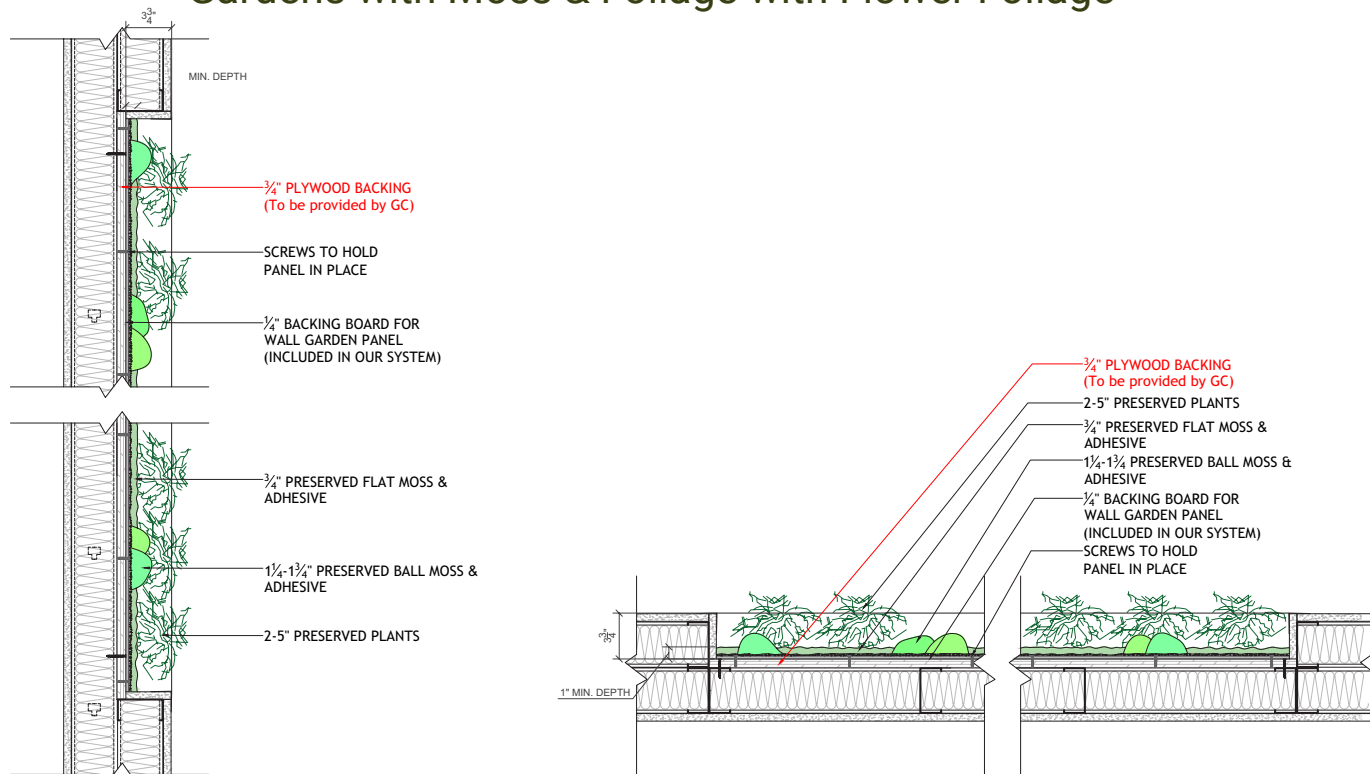
### Gardens with Moss Combinations



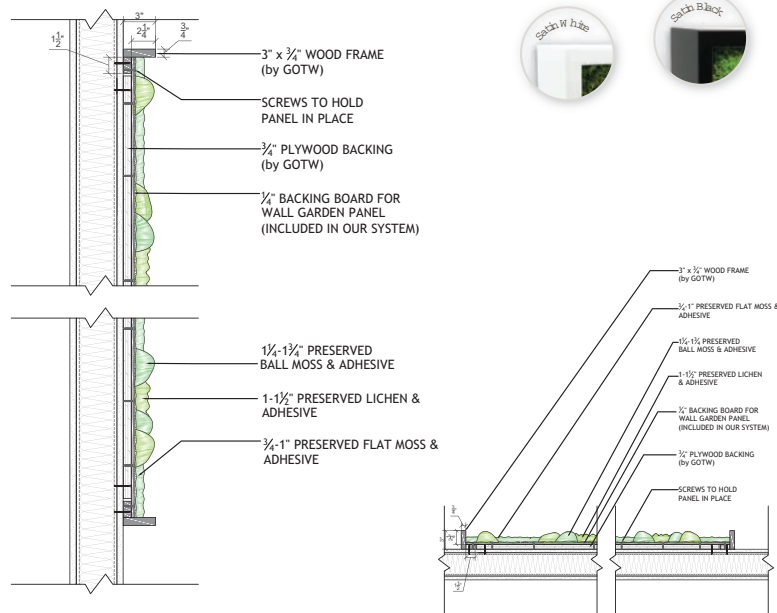
### Gardens with Moss & Foliage with Flower Foliage



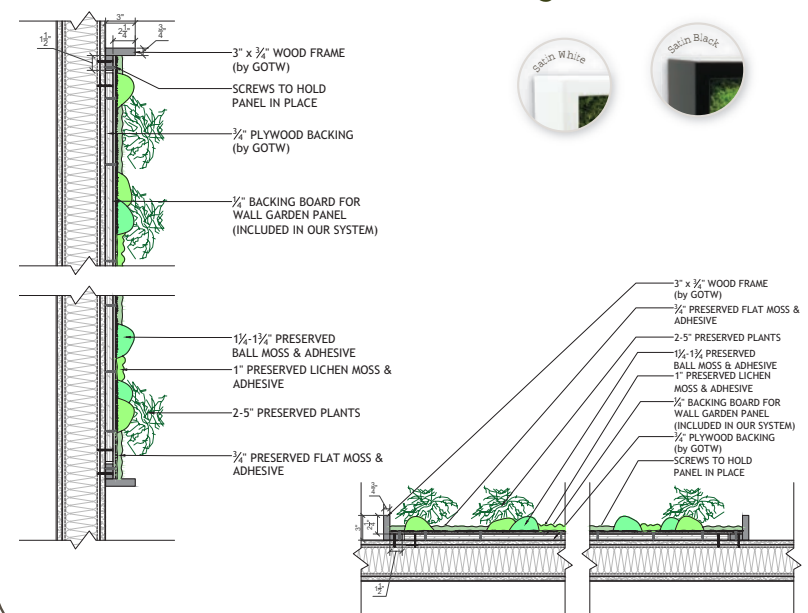
### Gardens with Moss & Foliage with Flower Foliage



### Gardens with Moss Combinations

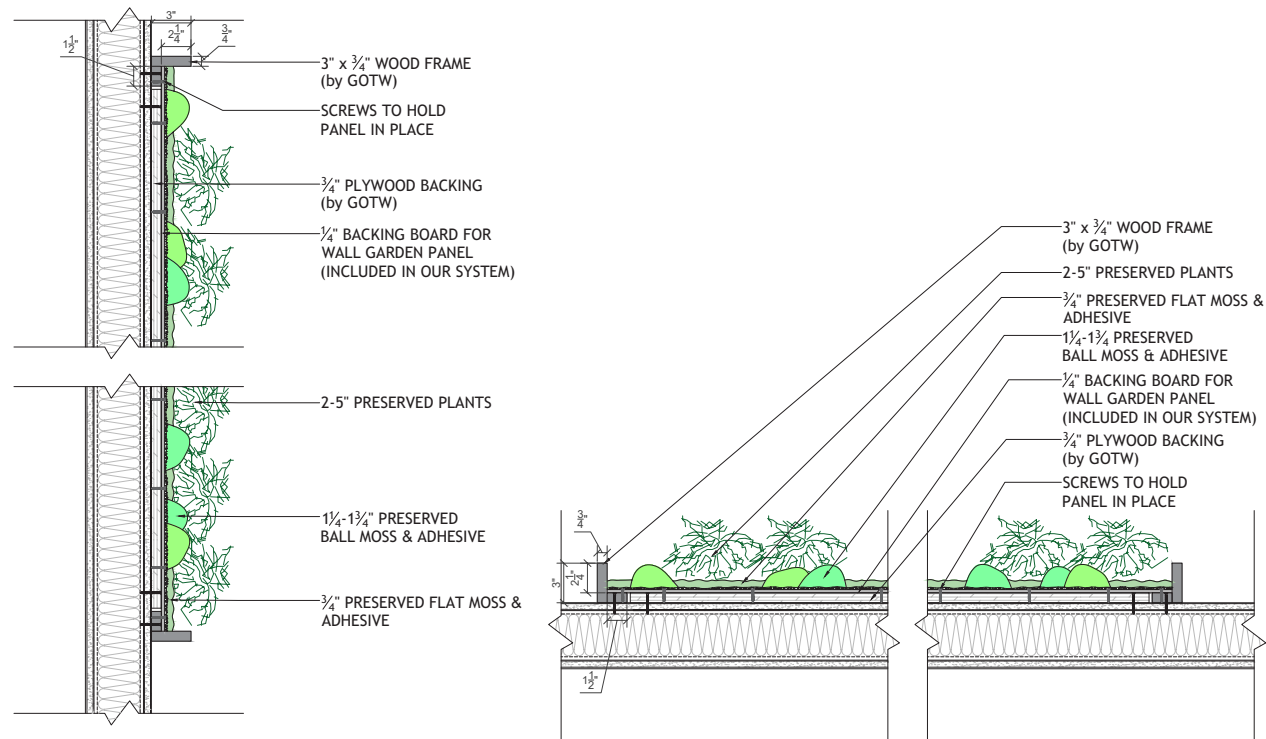


### Gardens with Moss & Foliage with Flower Foliage



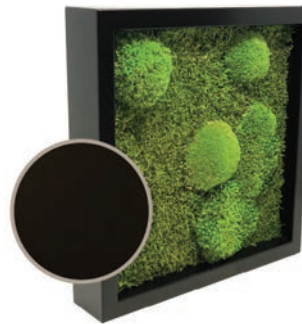


### Gardens with Moss & Foliage with Flower Foliage





SATIN WHITE



SATIN BLACK



BRUSHED  
WHITE OAK



BRUSHED/FLAMED  
WHITE OAK



ANIEGRE WOOD

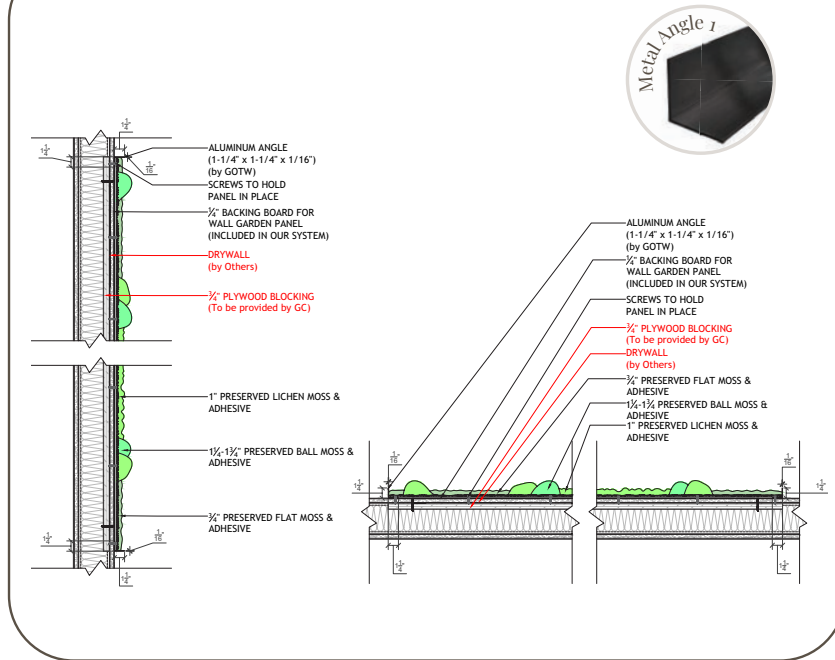


FLAMED MAPLE

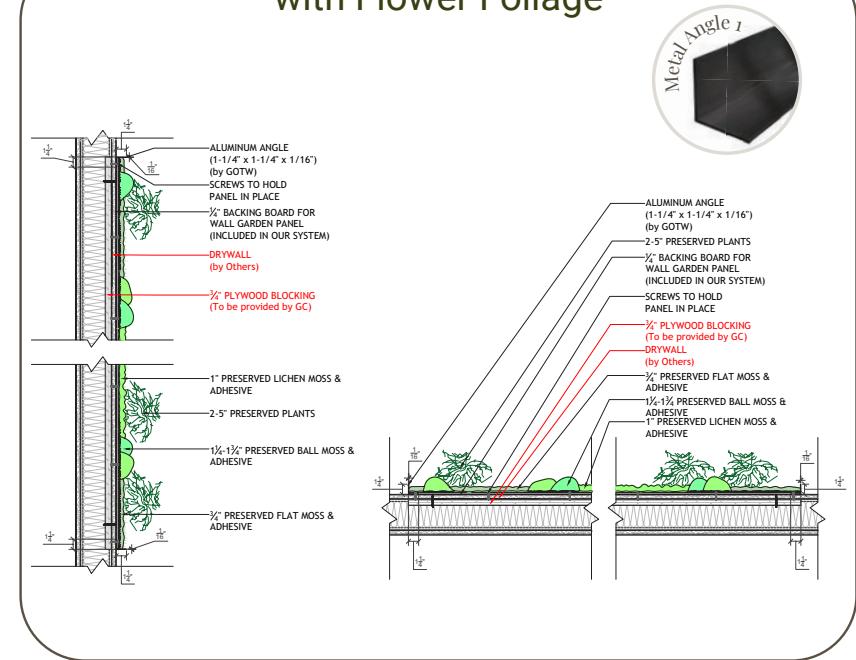
Rectilinear only

3/4" Thick & 3" Deep Wood

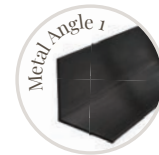
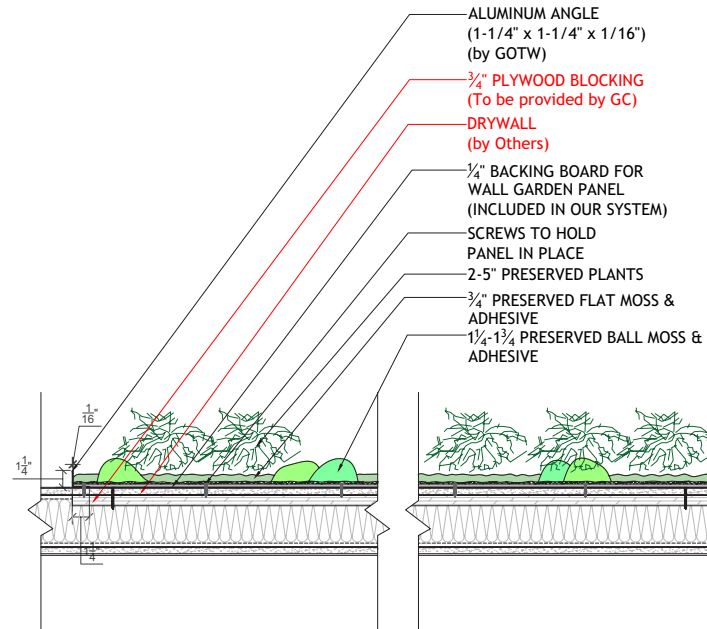
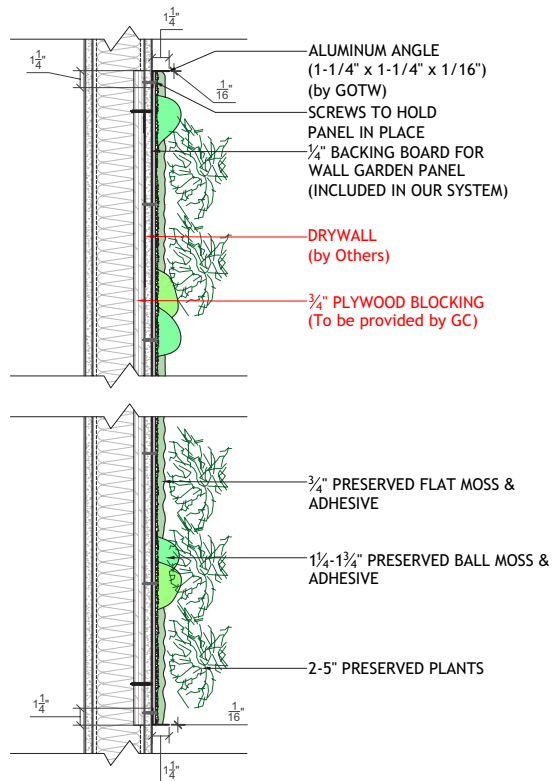
### Gardens with Moss Combinations

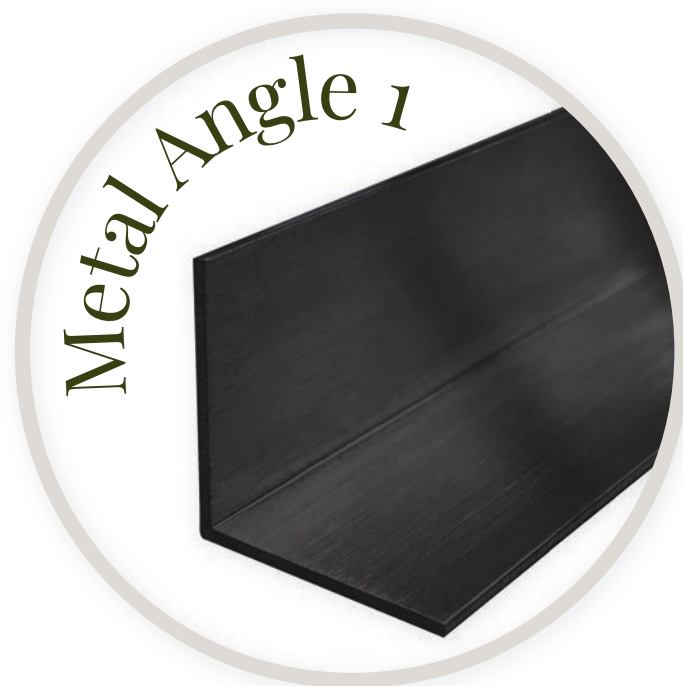


### Gardens with Moss & Foliage with Flower Foliage



### Gardens with Moss & Foliage with Flower Foliage



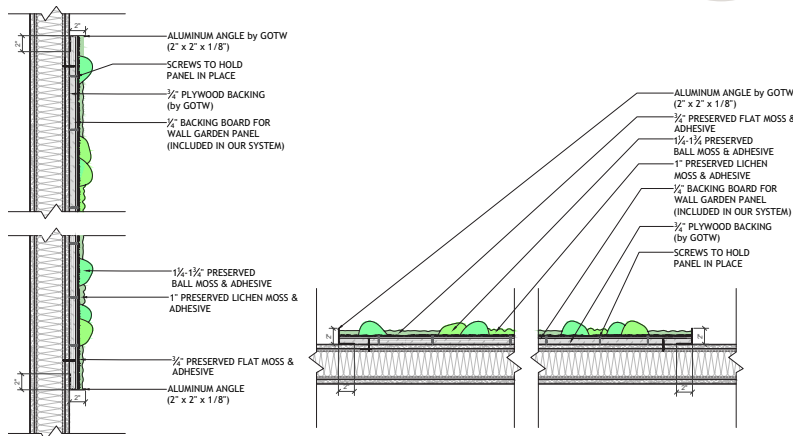
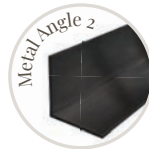


$\frac{1}{16}$ " X  $1\frac{1}{4}$ " X  $1\frac{1}{4}$ "

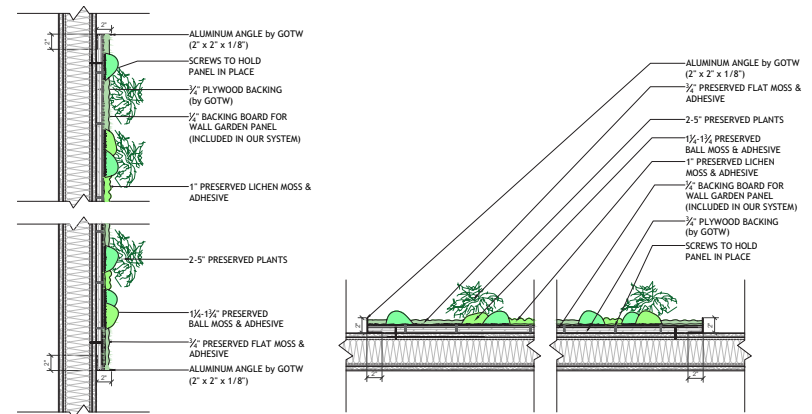
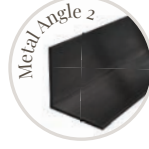
**Metal Angle 1 (Add on)**

**Typical Section/Plan Details**

### Gardens with Moss Combinations

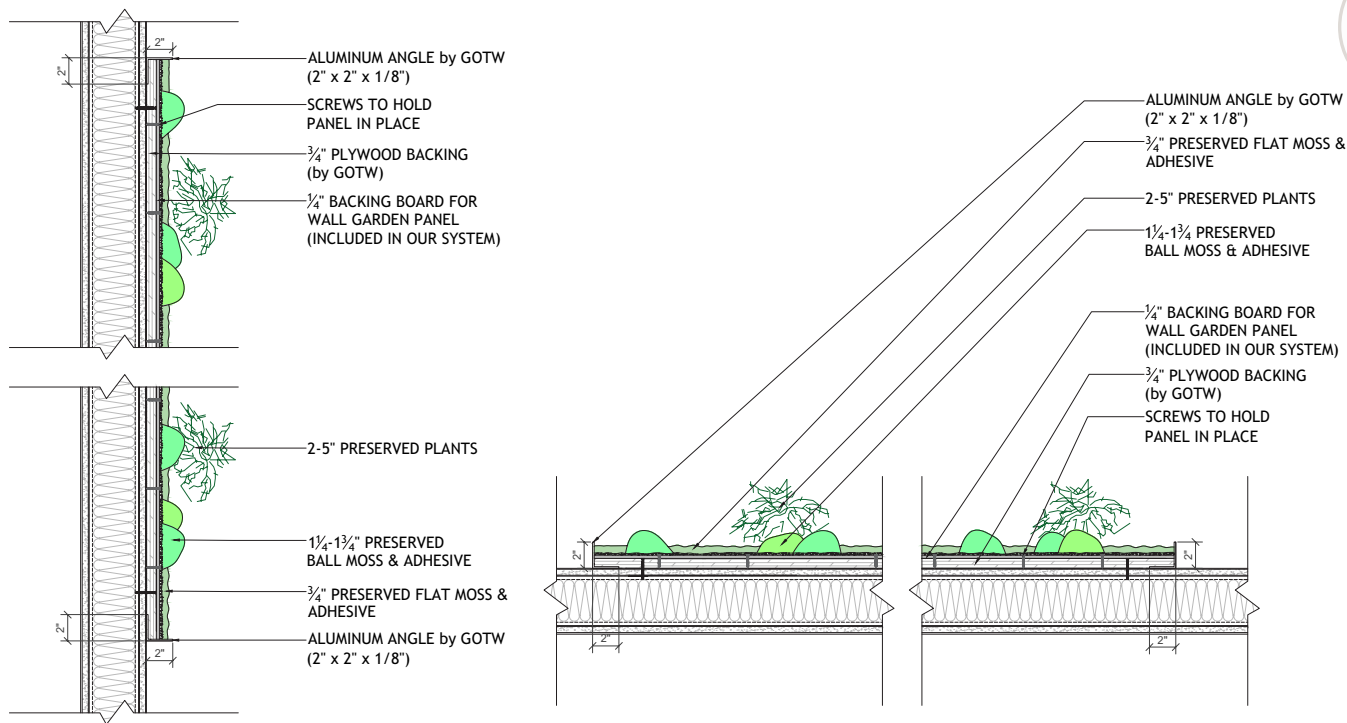


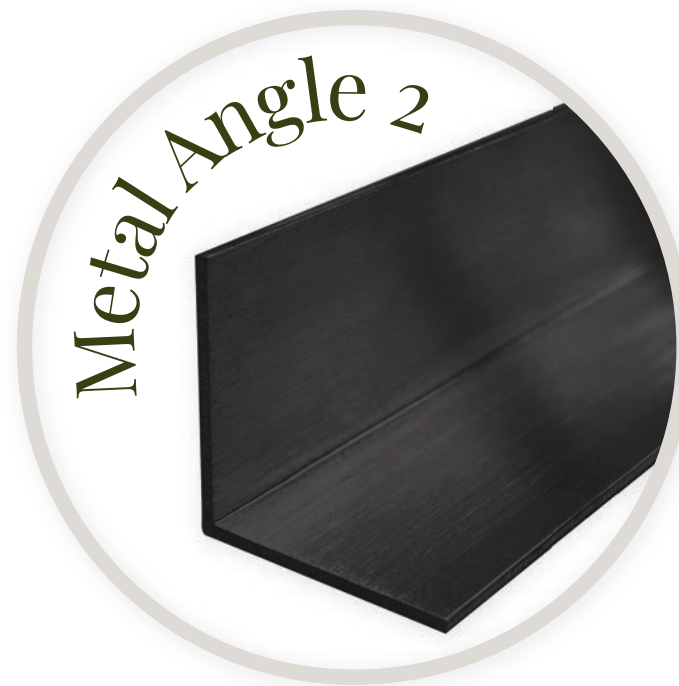
### Gardens with Moss & Foliage with Flower Foliage





### Gardens with Moss & Foliage with Flower Foliage



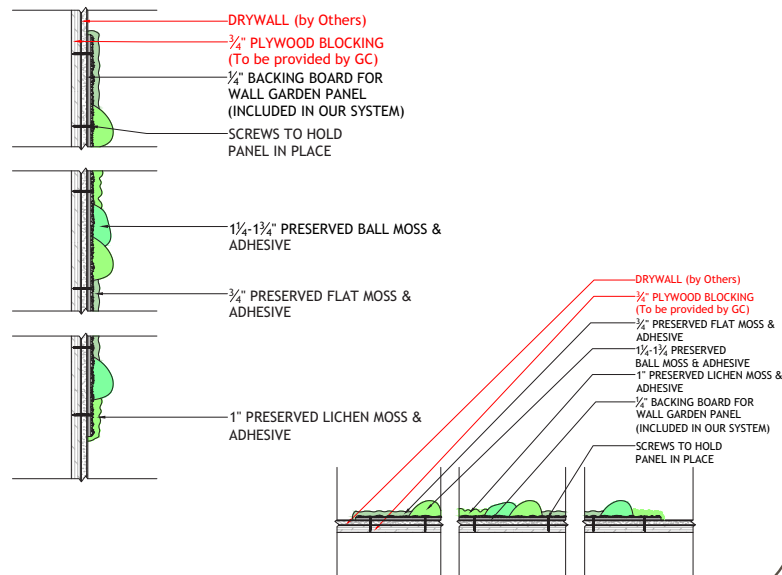


1/8" x 2" x 2"

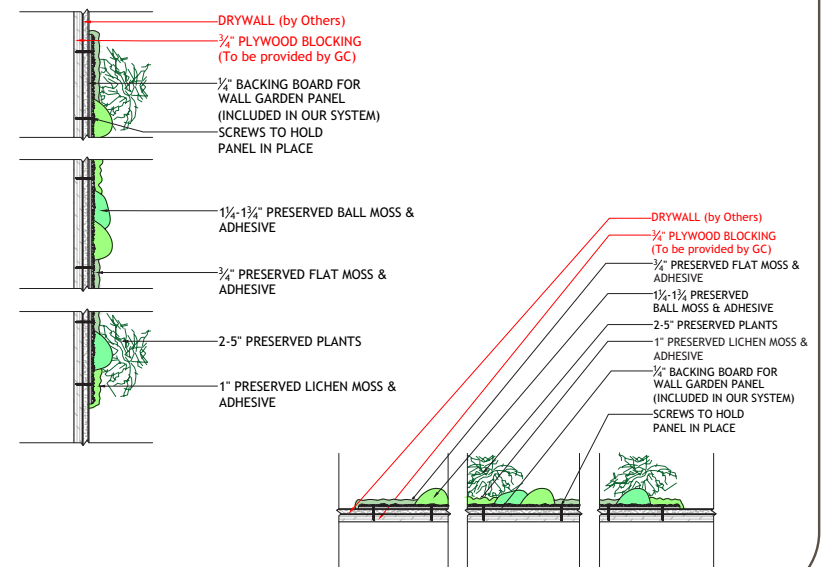
**Metal Angle 2 (Add on)**

**Typical Section/Plan Details**

### Gardens with Moss Combinations



### Gardens with Moss & Foliage with Flower Foliage



### Gardens with Moss & Foliage with Flower Foliage

