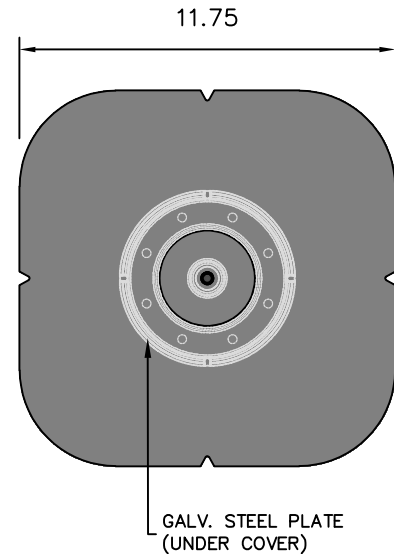
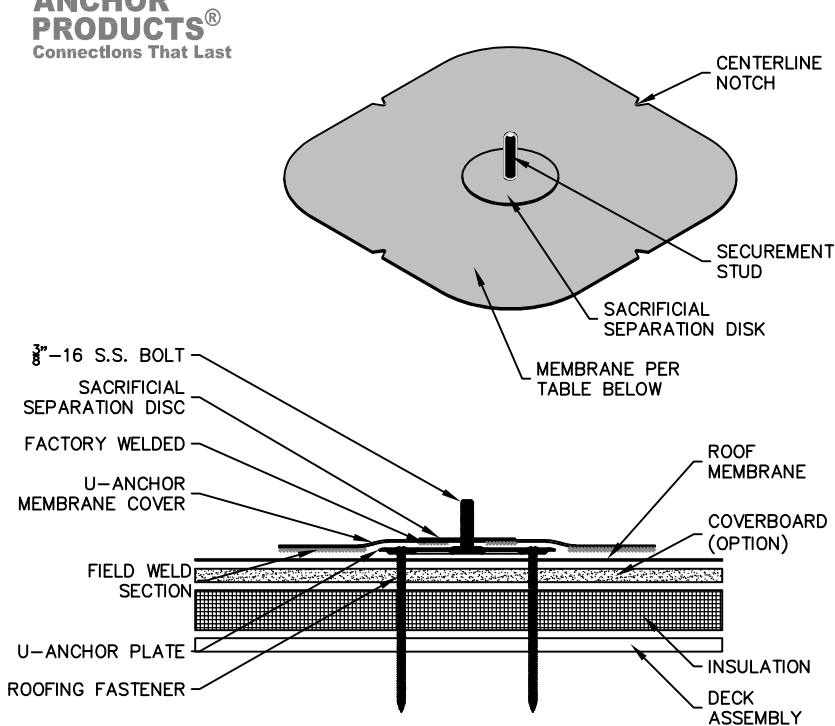




TECHNICAL DATA SHEET

U-ANCHOR - SERIES 2600

**ANCHOR
PRODUCTS®**
Connections That Last



NOTES:

1. ALL HARDWARE IS TO BE STAINLESS STEEL.
2. INSTALLATION SHALL BE PERFORMED BY CERTIFIED INSTALLERS AND COMPLY WITH THE ROOFING MANUFACTURER'S AND ANCHOR PRODUCT'S INSTALLATION SPECIFICATIONS.
3. FASTENER HARDWARE SHALL BE INSTALLED PER THE FASTENER MANUFACTURE'S SPECIFICATIONS TO THE SUBSTRATE INCLUDING DECK PENETRATION AND OTHER SPECIFIED STANDARDS.
4. SEAM WELDS MUST COMPLY WITH THE ROOFING MANUFACTURER'S REQUIREMENTS. THE AREA SHOULD BE CLEANED AND FREE OF DEBRIS AS PER THE ROOFING MANUFACTURER'S SPECIFICATION. TYPICAL SEAM WELDS ARE A MINIMUM 1.5". SEAMS MUST BE PROBED TO ENSURE A SUFFICIENT WELD HAS BEEN ACHIEVED. USE CUT EDGE SEALANT AS MANDATED BY THE ROOFING MANUFACTURER.

SPECS:

TESTED IN ACCORDANCE WITH FM 4481.4.1 SF OF 2 SHOULD BE USED FOR ALLOWABLE LOADS. A SF OF 4 SHOULD BE USED IN LIFE SAFETY APPLICATIONS. BASED ON LAB TESTED RESULTS, IN-SITU RESULTS MAY VARY. CONTACT ANCHOR PRODUCTS DIRECTLY FOR ADDITIONAL ENGINEERING INFORMATION

1. BOLT IS 3/8"-16x1-3/8 304 STAINLESS STEEL
2. PLATE IS 5.5"Ø, 19ga THICK G90 GALVANIZED STEEL
3. FASTENER HOLES ARE 0.265"Ø
4. ANCHOR PERFORMANCE:
ULTIMATE LOADS
SHEAR: 2540 lbf.
TENSILE: 1740 lbf.

MEMBRANE OPTIONS

APP	ELEVATE, GEN FLEX, JM, MULE HIDE, CERTAINTED, DERBIGUM, GAF, GARLAND, MALARKEY, POLYGLASS, SIPLAST, SOPREMA, TREMCO
SBS\TORCH	ELEVATE, GEN FLEX, JM, MULE HIDE, CERTAINTED, DERBIGUM, GAF, GARLAND, MALARKEY, POLYGLASS, SIPLAST, SOPREMA, TREMCO
BUR	ELEVATE, GEN FLEX, JM, MULE HIDE, CERTAINTED, DERBIGUM, GAF, GARLAND, MALARKEY, POLYGLASS, SIPLAST, SOPREMA, TREMCO

HARDWARE

ROOF TYPE	HARDWARE KIT
METAL DECK (24ga MIN)	(8) #14 or #15 ROOF FASTENERS
PLYWOOD SHEETING (3/4" MIN)	(8) #14 ROOF FASTENERS
PARTICLE SHEETING (1" MIN)	(8) #14 ROOF FASTENERS
CONCRETE DECK (STD WEIGHT)	(6) #14 CONCRETE FASTENERS

Codes & Approvals



PROPRIETARY AND CONFIDENTIAL

The information contained in this drawing is the sole property of Anchor Products. Any reproduction in part or as a whole without written permission of Anchor Products is prohibited.

EFFECTIVE: APRIL 2025

MADE IN
U. S. A.