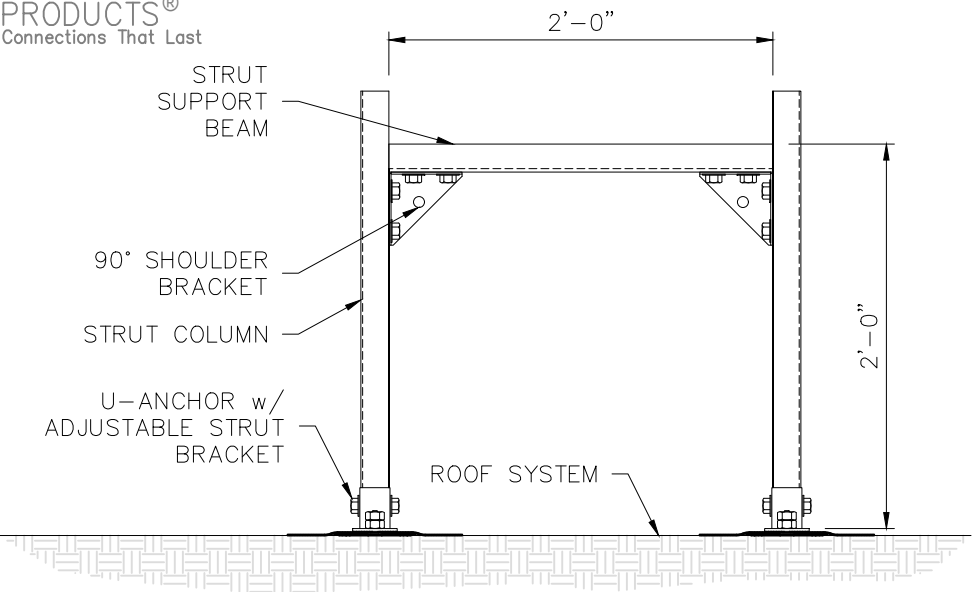




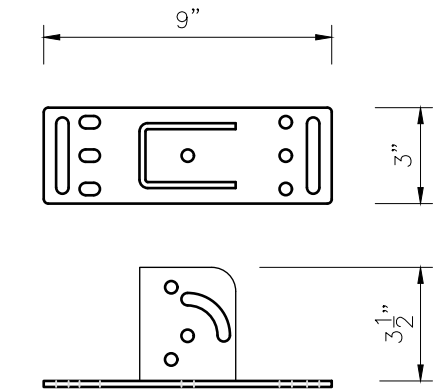
SYSTEM DATA SHEET

24"x24" STANDARD H-FRAME - w/ 3000 SERIES U-ANCHOR

ANCHOR  
PRODUCTS®  
Connections That Last



ELEVATION VIEW



ADJUSTABLE STRUT BRACKET

NOTES:

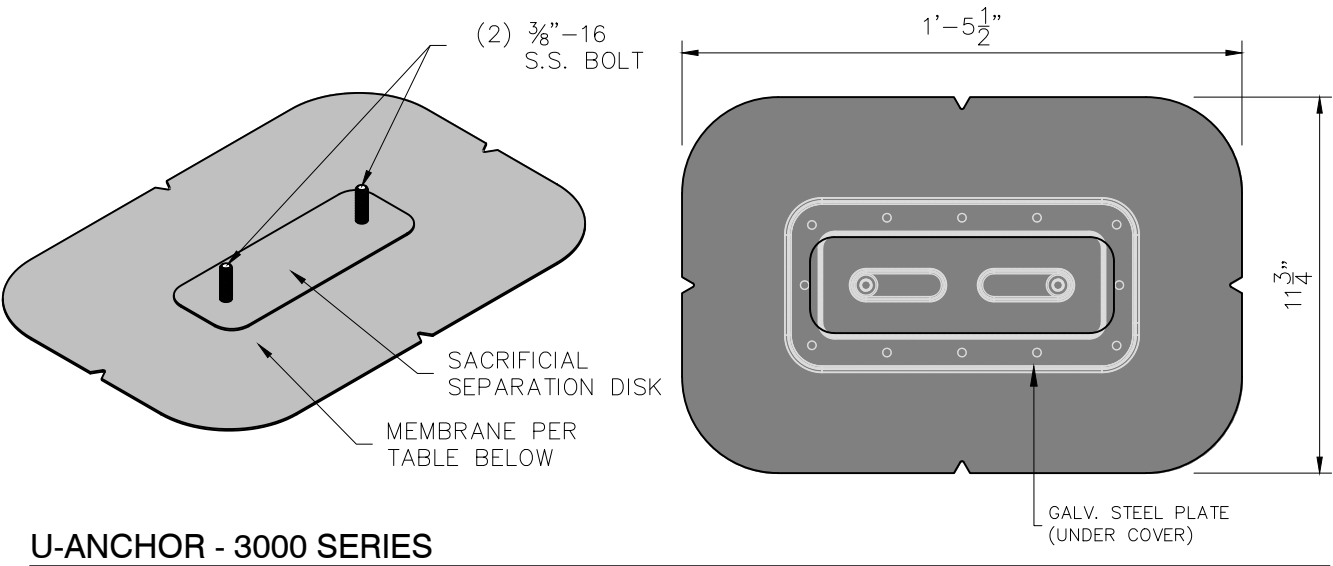
- 1. THE DESIGN AND APPLICATION OF THE H-FRAME SYSTEM MUST BE PERFORMED BY A QUALIFIED, LICENSED PROFESSIONAL ENGINEER.
- 2. ALL HARDWARE IS TO BE GALV. COATED OR STAINLESS STEEL.
- 3. INSTALLATION SHALL BE PERFORMED BY CERTIFIED INSTALLERS AND COMPLY WITH THE ROOFING MANUFACTURER'S AND ANCHOR PRODUCT'S INSTALLATION SPECIFICATIONS.
- 4. FASTENER HARDWARE SHALL BE INSTALLED PER THE FASTENER MANUFACTURE'S SPECIFICATIONS TO THE SUBSTRATE INCLUDING DECK PENETRATION AND OTHER SPECIFIED STANDARDS.
- 5. SEAM WELDS MUST COMPLY WITH THE ROOFING MANUFACTURER'S REQUIREMENTS. THE AREA SHOULD BE CLEANED AND FREE OF DEBRIS AS PER THE ROOFING MANUFACTURER'S SPECIFICATION. TYPICAL SEAM WELDS ARE A MINIMUM 1.5". SEAMS MUST BE PROBED TO ENSURE A SUFFICIENT WELD HAS BEEN ACHIEVED. USE CUT EDGE SEALANT AS MANDATED BY THE ROOFING MANUFACTURER.

SPECS:

IN THE EVENT THE H-FRAME SYSTEM IS INSTALLED, USED, OR APPLIED WITHOUT THE REQUIRED DESIGN AND DIRECTION OF A QUALIFIED, LICENSED PROFESSIONAL ENGINEER, THE USER AGREES TO INDEMNIFY, DEFEND, AND HOLD HARMLESS ANCHOR PRODUCTS, LLC, ITS OFFICERS, DIRECTORS, EMPLOYEES, AND AGENTS FROM AND AGAINST ANY AND ALL CLAIMS, LIABILITIES, LOSSES, DAMAGES, AND EXPENSES (INCLUDING REASONABLE ATTORNEY'S FEES) ARISING FROM OR RELATED TO SUCH NON-COMPLIANT USE.

TESTED IN ACCORDANCE WITH FM 4481.4.1 CONTACT AN ENGINEER FOR THE APPROPRIATE ALLOWABLE LOADING. BASED ON LAB TESTED RESULTS, IN FIELD RESULTS MAY VARY. CONTACT ANCHOR PRODUCTS DIRECTLY FOR ADDITIONAL ENGINEERING INFORMATION

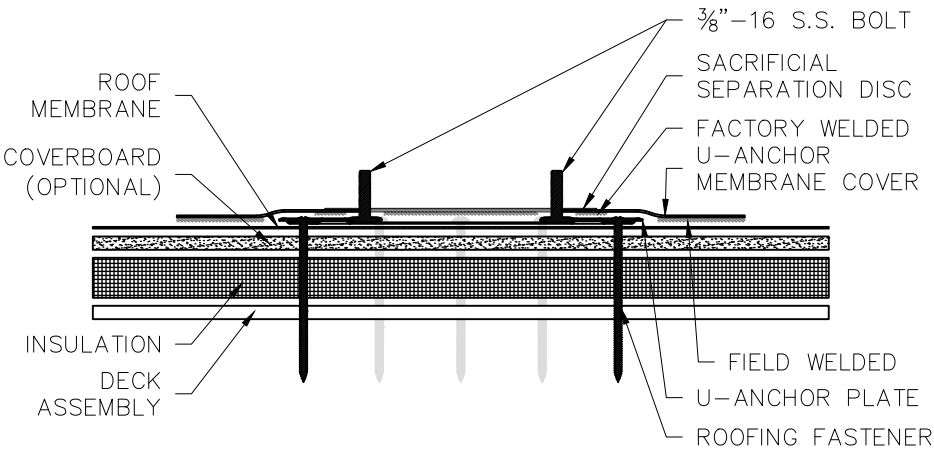
- 1. BOLT IS 3/8"-16x1 3/8" 304 STAINLESS STEEL
- 2. PLATE IS 5.5"Ø, 19ga THICK G90 GALVANIZED STEEL
- 3. FASTENER HOLES ARE 0.265"Ø
- 4. H-FRAME LOAD LIMITS
  - MAX POINT LOAD: 580 lbs.
  - MAX DISTRIBUTED LOAD: 290 plf
  - MAX LATERAL LOAD: 875 lbf.
- 5. ANCHOR PERFORMANCE: ULTIMATE LOADS
  - SHEAR: 2540 lbf.
  - TENSILE: 1740 lbf.



U-ANCHOR - 3000 SERIES

HARDWARE

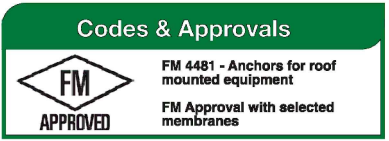
ROOF TYPE	HARDWARE KIT
METAL DECK (24ga MIN)	(8) #14 or #15 ROOF FASTENERS
PLYWOOD SHEETING (3/4" MIN)	(8) #14 ROOF FASTENERS
PARTICLE SHEETING (1" MIN)	(8) #14 ROOF FASTENERS
CONCRETE DECK (STD WEIGHT)	(6) #14 CONCRETE FASTENERS



U-ANCHOR CROSS-SECTION - 3000 SERIES

MEMBRANE OPTIONS

TPO	ELEVATE, GEN FLEX, JM, MULE HIDE, CARLISLE, DURALAST, GAF, IKO, VERSICO
PVC\KEE	ELEVATE, GEN FLEX, JM, MULE HIDE, CARLISLE, DURALAST, FIBERTITE, FLEX, GAF, IB, IKO, SIKA SARNAFIL, VERSICO, WEATHER BOND
EPDM	ELEVATE, GEN FLEX, JM, MULE HIDE, CARLISLE, VERSICO
APP	ELEVATE, GEN FLEX, JM, MULE HIDE, CERTAINTEED, DERBIGUM, GAF, GARLAND, MALARKEY, POLYGLASS, SIPLAST, SOPREMA, TREMCO
SBS\TORCH	ELEVATE, GEN FLEX, JM, MULE HIDE, CERTAINTEED, DERBIGUM, GAF, GARLAND, MALARKEY, POLYGLASS, SIPLAST, SOPREMA, TREMCO
BUR	ELEVATE, GEN FLEX, JM, MULE HIDE, CERTAINTEED, DERBIGUM, GAF, GARLAND, MALARKEY, POLYGLASS, SIPLAST, SOPREMA, TREMCO



PROPRIETARY AND CONFIDENTIAL  
The information contained in this drawing is the sole property of Anchor Products. Any reproduction in part or as a whole without written permission of Anchor Products is prohibited.

© ANCHOR PRODUCTS  
8313 AIRPORT FWY. STE. D, HALTOM CITY, TX 76117  
(888) 575-2131  
CONNECTIONS THAT LAST

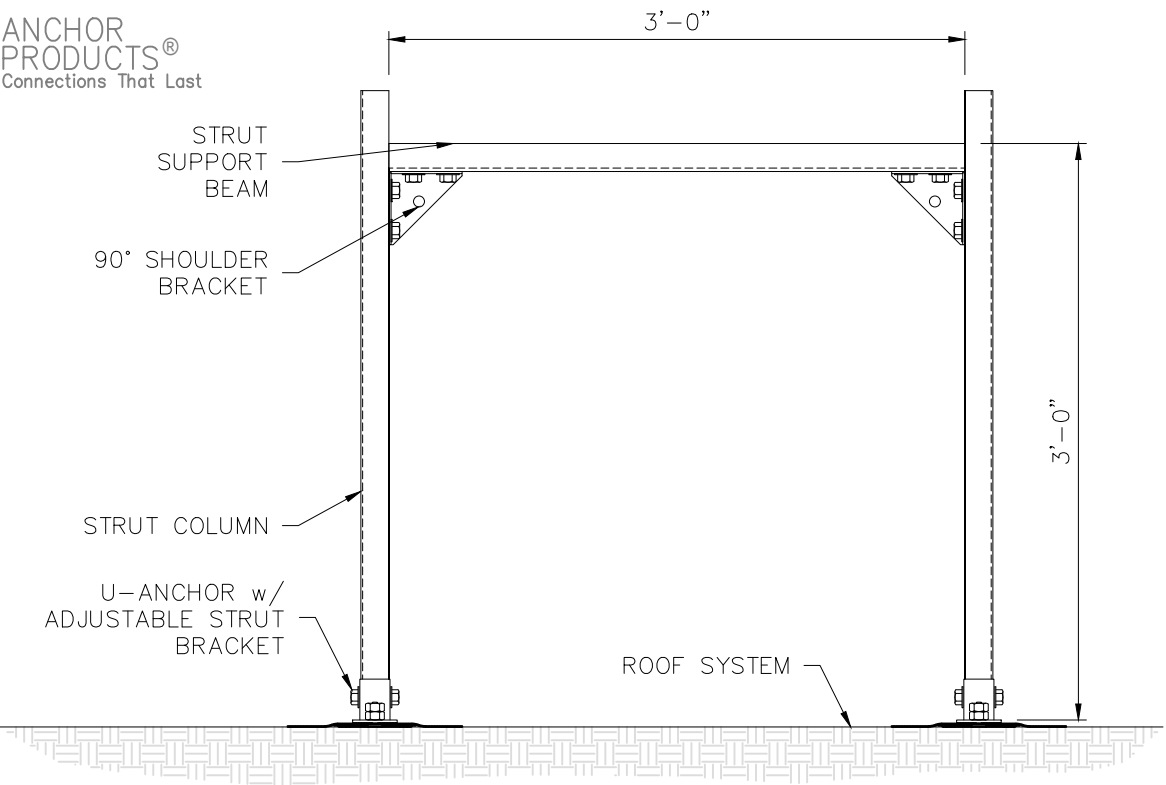




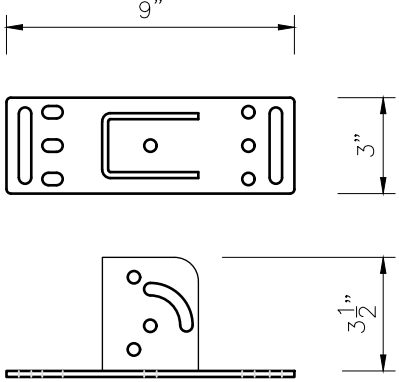
SYSTEM DATA SHEET

36"x36" STANDARD H-FRAME - w/ 3000 SERIES U-ANCHOR

ANCHOR  
PRODUCTS®  
Connections That Last



ELEVATION VIEW



ADJUSTABLE STRUT BRACKET

- NOTES:
1. THE DESIGN AND APPLICATION OF THE H-FRAME SYSTEM MUST BE PERFORMED BY A QUALIFIED, LICENSED PROFESSIONAL ENGINEER.
  2. ALL HARDWARE IS TO BE GALV. COATED OR STAINLESS STEEL.
  3. INSTALLATION SHALL BE PERFORMED BY CERTIFIED INSTALLERS AND COMPLY WITH THE ROOFING MANUFACTURER'S AND ANCHOR PRODUCT'S INSTALLATION SPECIFICATIONS.
  4. FASTENER HARDWARE SHALL BE INSTALLED PER THE FASTENER MANUFACTURE'S SPECIFICATIONS TO THE SUBSTRATE INCLUDING DECK PENETRATION AND OTHER SPECIFIED STANDARDS.
  5. SEAM WELDS MUST COMPLY WITH THE ROOFING MANUFACTURER'S REQUIREMENTS. THE AREA SHOULD BE CLEANED AND FREE OF DEBRIS AS PER THE ROOFING MANUFACTURER'S SPECIFICATION. TYPICAL SEAM WELDS ARE A MINIMUM 1.5". SEAMS MUST BE PROBED TO ENSURE A SUFFICIENT WELD HAS BEEN ACHIEVED. USE CUT EDGE SEALANT AS MANDATED BY THE ROOFING MANUFACTURER.

SPECS:

IN THE EVENT THE H-FRAME SYSTEM IS INSTALLED, USED, OR APPLIED WITHOUT THE REQUIRED DESIGN AND DIRECTION OF A QUALIFIED, LICENSED PROFESSIONAL ENGINEER, THE USER AGREES TO INDEMNIFY, DEFEND, AND HOLD HARMLESS ANCHOR PRODUCTS, LLC, ITS OFFICERS, DIRECTORS, EMPLOYEES, AND AGENTS FROM AND AGAINST ANY AND ALL CLAIMS, LIABILITIES, LOSSES, DAMAGES, AND EXPENSES (INCLUDING REASONABLE ATTORNEY'S FEES) ARISING FROM OR RELATED TO SUCH NON-COMPLIANT USE.

TESTED IN ACCORDANCE WITH FM 4481.4.1 CONTACT AN ENGINEER FOR THE APPROPRIATE ALLOWABLE LOADING. BASED ON LAB TESTED RESULTS, IN FIELD RESULTS MAY VARY. CONTACT ANCHOR PRODUCTS DIRECTLY FOR ADDITIONAL ENGINEERING INFORMATION

1. BOLT IS  $\frac{3}{8}$ "-16x1 $\frac{3}{8}$ " 304 STAINLESS STEEL
2. PLATE IS 5.5"Ø, 19ga THICK G90 GALVANIZED STEEL
3. FASTENER HOLES ARE 0.265"Ø
4. H-FRAME LOAD LIMITS
  - MAX POINT LOAD: 500 lbs.
  - MAX DISTRIBUTED LOAD: 175 plf
  - MAX LATERAL LOAD: 550 lbf.
5. ANCHOR PERFORMANCE:
  - ULTIMATE LOADS
    - SHEAR: 2540 lbf.
    - TENSILE: 1740 lbf.

MEMBRANE OPTIONS

TPO	ELEVATE, GEN FLEX, JM, MULE HIDE, CARLISLE, DURALAST, GAF, IKO, VERSICO
PVC\KEE	ELEVATE, GEN FLEX, JM, MULE HIDE, CARLISLE, DURALAST, FIBERTITE, FLEX, GAF, IB, IKO, SIKA SARNAFIL, VERSICO, WEATHER BOND
EPDM	ELEVATE, GEN FLEX, JM, MULE HIDE, CARLISLE, VERSICO
APP	ELEVATE, GEN FLEX, JM, MULE HIDE, CERTAINTEED, DERBIGUM, GAF, GARLAND, MALARKEY, POLYGLASS, SIPLAST, SOPREMA, TREMCO
SBS\TORCH	ELEVATE, GEN FLEX, JM, MULE HIDE, CERTAINTEED, DERBIGUM, GAF, GARLAND, MALARKEY, POLYGLASS, SIPLAST, SOPREMA, TREMCO
BUR	ELEVATE, GEN FLEX, JM, MULE HIDE, CERTAINTEED, DERBIGUM, GAF, GARLAND, MALARKEY, POLYGLASS, SIPLAST, SOPREMA, TREMCO

HARDWARE

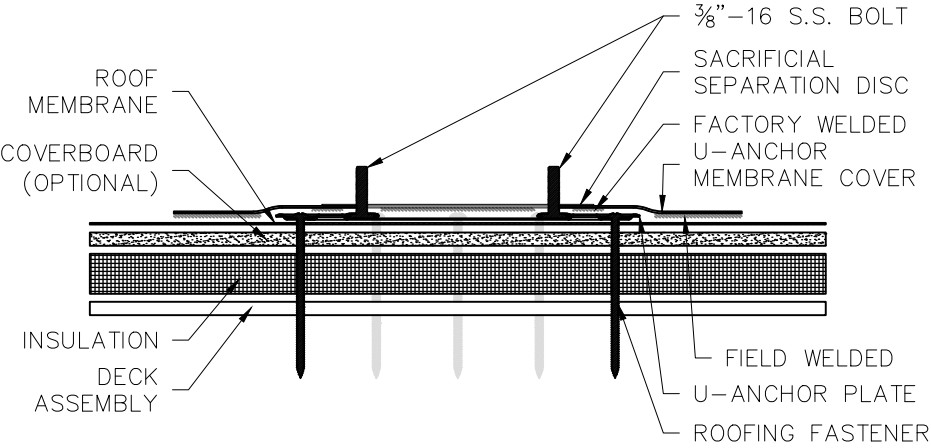
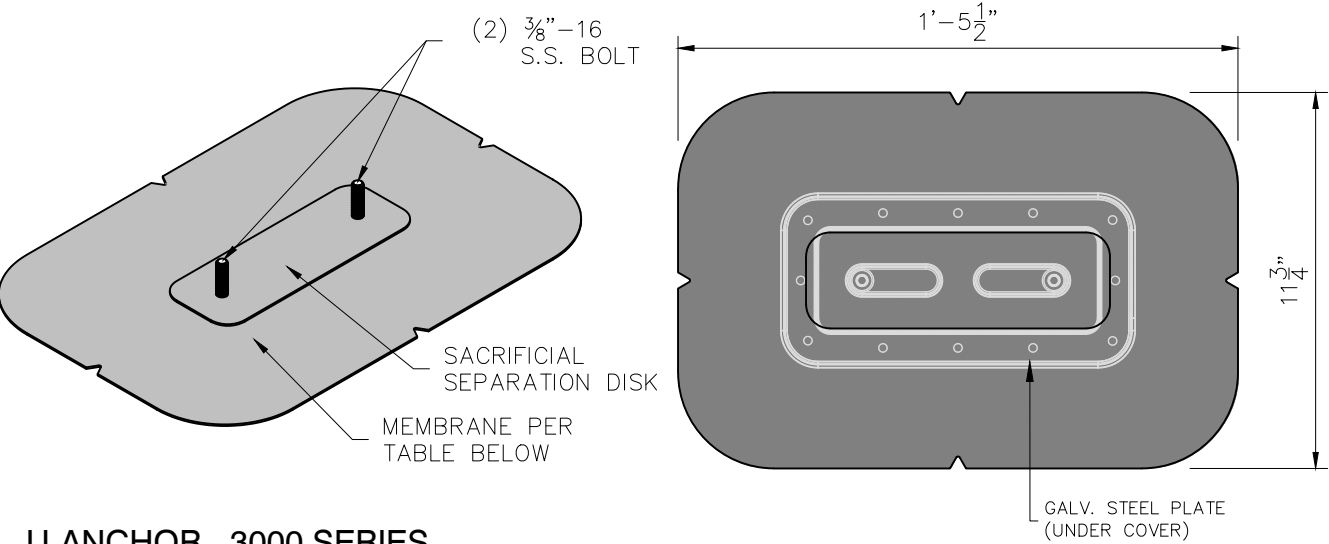
ROOF TYPE	HARDWARE KIT
METAL DECK (24ga MIN)	(8) #14 or #15 ROOF FASTENERS
PLYWOOD SHEETING ( $\frac{3}{4}$ " MIN)	(8) #14 ROOF FASTENERS
PARTICLE SHEETING (1" MIN)	(8) #14 ROOF FASTENERS
CONCRETE DECK (STD WEIGHT)	(6) #14 CONCRETE FASTENERS

Codes & Approvals



FM 4481 - Anchors for roof mounted equipment  
FM Approval with selected membranes

U-ANCHOR - 3000 SERIES



U-ANCHOR CROSS-SECTION - 3000 SERIES

PROPRIETARY AND CONFIDENTIAL  
The information contained in this drawing is the sole property of Anchor Products. Any reproduction in part or as a whole without written permission of Anchor Products is prohibited.

EFFECTIVE: SEPTEMBER 2025

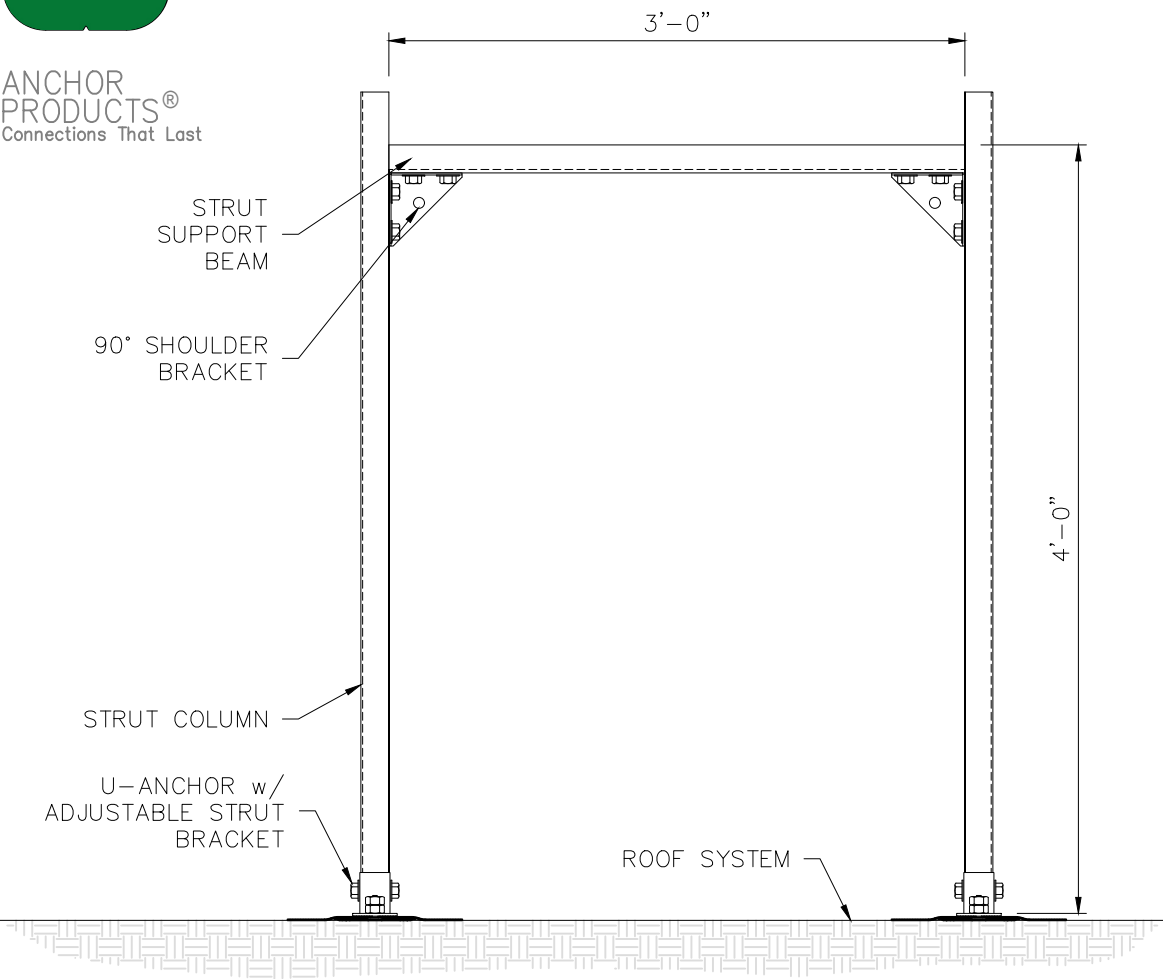
© ANCHOR PRODUCTS  
6313 AIRPORT FWY. STE. D, HALTOM CITY, TX 76117  
(888) 575-2131  
MADE IN U.S.A.  
CONNECTIONS THAT LAST



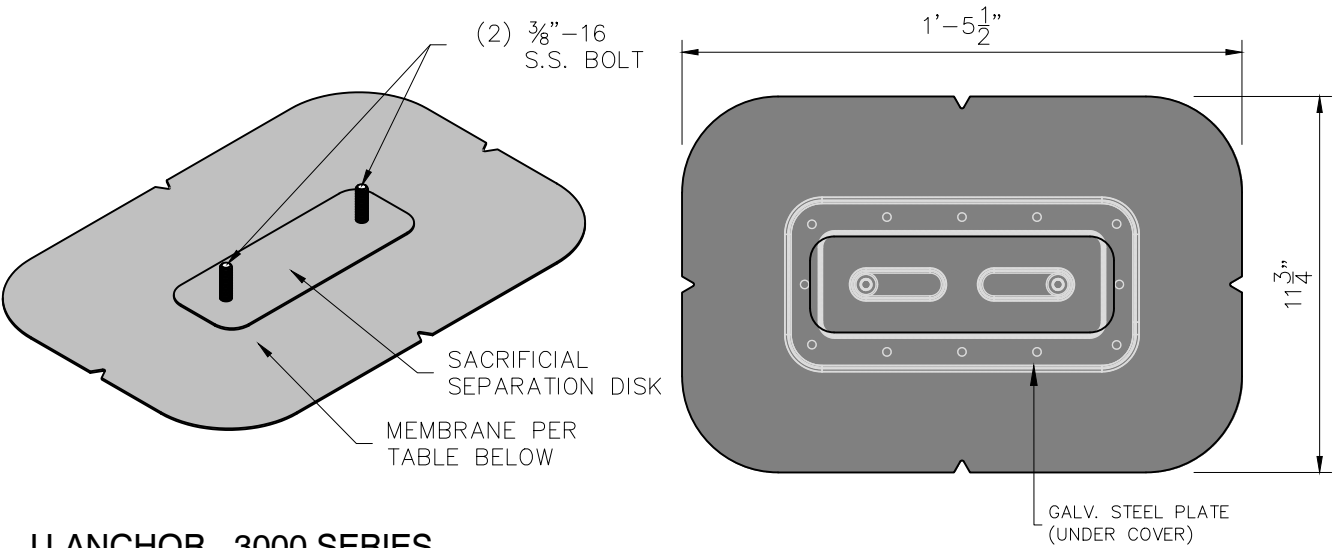
SYSTEM DATA SHEET

36"x48" STANDARD H-FRAME - w/ 3000 SERIES U-ANCHOR

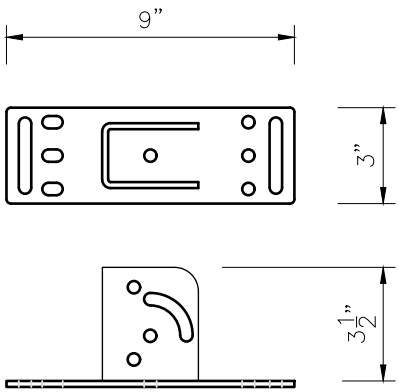
ANCHOR  
PRODUCTS®  
Connections That Last



ELEVATION VIEW



U-ANCHOR - 3000 SERIES



ADJUSTABLE STRUT BRACKET

NOTES:

1. THE DESIGN AND APPLICATION OF THE H-FRAME SYSTEM MUST BE PERFORMED BY A QUALIFIED, LICENSED PROFESSIONAL ENGINEER.
2. ALL HARDWARE IS TO BE GALV. COATED OR STAINLESS STEEL.
3. INSTALLATION SHALL BE PERFORMED BY CERTIFIED INSTALLERS AND COMPLY WITH THE ROOFING MANUFACTURER'S AND ANCHOR PRODUCT'S INSTALLATION SPECIFICATIONS.
4. FASTENER HARDWARE SHALL BE INSTALLED PER THE FASTENER MANUFACTURE'S SPECIFICATIONS TO THE SUBSTRATE INCLUDING DECK PENETRATION AND OTHER SPECIFIED STANDARDS.
5. SEAM WELDS MUST COMPLY WITH THE ROOFING MANUFACTURER'S REQUIREMENTS. THE AREA SHOULD BE CLEANED AND FREE OF DEBRIS AS PER THE ROOFING MANUFACTURER'S SPECIFICATION. TYPICAL SEAM WELDS ARE A MINIMUM 1.5". SEAMS MUST BE PROBED TO ENSURE A SUFFICIENT WELD HAS BEEN ACHIEVED. USE CUT EDGE SEALANT AS MANDATED BY THE ROOFING MANUFACTURER.

SPECS:

IN THE EVENT THE H-FRAME SYSTEM IS INSTALLED, USED, OR APPLIED WITHOUT THE REQUIRED DESIGN AND DIRECTION OF A QUALIFIED, LICENSED PROFESSIONAL ENGINEER, THE USER AGREES TO INDEMNIFY, DEFEND, AND HOLD HARMLESS ANCHOR PRODUCTS, LLC, ITS OFFICERS, DIRECTORS, EMPLOYEES, AND AGENTS FROM AND AGAINST ANY AND ALL CLAIMS, LIABILITIES, LOSSES, DAMAGES, AND EXPENSES (INCLUDING REASONABLE ATTORNEY'S FEES) ARISING FROM OR RELATED TO SUCH NON-COMPLIANT USE.

TESTED IN ACCORDANCE WITH FM 4481.4.1 CONTACT AN ENGINEER FOR THE APPROPRIATE ALLOWABLE LOADING. BASED ON LAB TESTED RESULTS, IN FIELD RESULTS MAY VARY. CONTACT ANCHOR PRODUCTS DIRECTLY FOR ADDITIONAL ENGINEERING INFORMATION

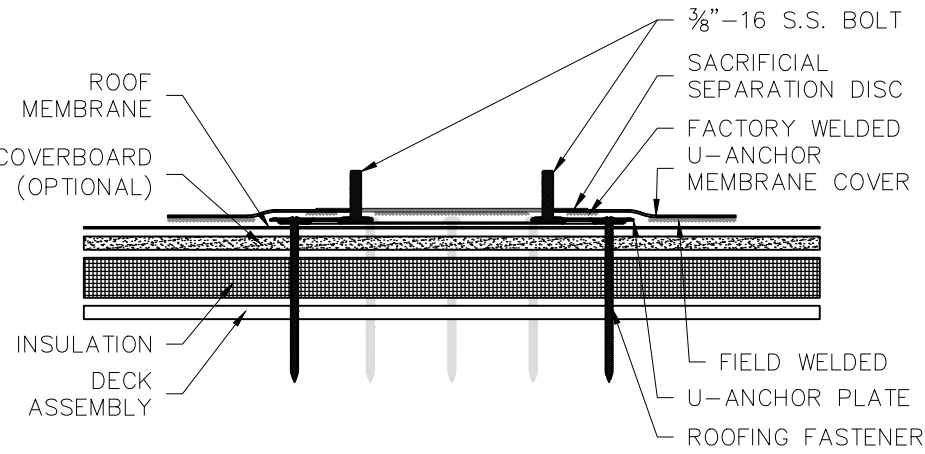
1. BOLT IS 3/8"-16x1 3/8" 304 STAINLESS STEEL
2. PLATE IS 5.5"Ø, 19ga THICK G90 GALVANIZED STEEL
3. FASTENER HOLES ARE 0.265"Ø
4. H-FRAME LOAD LIMITS  
MAX POINT LOAD: 500 lbs.  
MAX DISTRIBUTED LOAD: 175 plf  
MAX LATERAL LOAD: 450 lbf.
5. ANCHOR PERFORMANCE:  
ULTIMATE LOADS  
SHEAR: 2540 lbf.  
TENSILE: 1740 lbf.

MEMBRANE OPTIONS

TPO	ELEVATE, GEN FLEX, JM, MULE HIDE, CARLISLE, DURALAST, GAF, IKO, VERSICO
PVC\KEE	ELEVATE, GEN FLEX, JM, MULE HIDE, CARLISLE, DURALAST, FIBERTITE, FLEX, GAF, IB, IKO, SIKA SARNAFIL, VERSICO, WEATHER BOND
EPDM	ELEVATE, GEN FLEX, JM, MULE HIDE, CARLISLE, VERSICO
APP	ELEVATE, GEN FLEX, JM, MULE HIDE, CERTAINTEED, DERBIGUM, GAF, GARLAND, MALARKEY, POLYGLASS, SIPLAST, SOPREMA, TREMCO
SBS\TORCH	ELEVATE, GEN FLEX, JM, MULE HIDE, CERTAINTEED, DERBIGUM, GAF, GARLAND, MALARKEY, POLYGLASS, SIPLAST, SOPREMA, TREMCO
BUR	ELEVATE, GEN FLEX, JM, MULE HIDE, CERTAINTEED, DERBIGUM, GAF, GARLAND, MALARKEY, POLYGLASS, SIPLAST, SOPREMA, TREMCO

HARDWARE

ROOF TYPE	HARDWARE KIT
METAL DECK (24ga MIN)	(8) #14 or #15 ROOF FASTENERS
PLYWOOD SHEETING (3/4" MIN)	(8) #14 ROOF FASTENERS
PARTICLE SHEETING (1" MIN)	(8) #14 ROOF FASTENERS
CONCRETE DECK (STD WEIGHT)	(6) #14 CONCRETE FASTENERS



U-ANCHOR CROSS-SECTION - 3000 SERIES

Codes & Approvals



FM 4481 - Anchors for roof mounted equipment  
FM Approval with selected membranes

PROPRIETARY AND CONFIDENTIAL  
The information contained in this drawing is the sole property of Anchor Products. Any reproduction in part or as a whole without written permission of Anchor Products is prohibited.

© ANCHOR PRODUCTS  
6313 AIRPORT FWY. STE. D, HALTOM CITY, TX 76117  
(888) 575-2131  
CONNECTIONS THAT LAST

