



Flexible Control. Fewer Capsules.

Zanaflex® (Tizanidine Hydrochloride) Capsules 8 mg

NDC: 73352-090-60

NDC: 73352-089-60

INDICATIONS:

Tizanidine hydrochloride is indicated for the treatment of spasticity in adults.

CONTRAINDICATIONS:

Tizanidine is contraindicated in patients:

- Taking strong CYP1A2 inhibitors
- With a history of hypersensitivity to tizanidine or the ingredients in tizanidine. Symptoms have included anaphylaxis and angioedema

WARNINGS AND PRECAUTIONS:

Hypotension

Hypotension: Monitor for signs and symptoms of hypotension, in particular in patients receiving concurrent antihypertensives; tizanidine should not be used with other α_2 -adrenergic agonists.

Risk of liver injury: Monitor ALTs; discontinue tizanidine if liver injury occurs.

Sedation: Tizanidine may interfere with everyday activities; sedative effects of tizanidine, alcohol, and other central nervous system (CNS) depressants are additive.

Hallucinations: Consider discontinuation of tizanidine.

ADVERSE REACTIONS

The most common adverse reactions (greater than 10% of patients taking tizanidine and greater than in patients taking placebo) were dry mouth, somnolence, asthenia and dizziness.

For full Prescribing Information, see attached Product Insert.

You are encouraged to report negative side effects of prescription drugs to the FDA. Visit fda.gov/medwatch or call 1-800-FDA-1088.



Consider Zanaflex when targeted spasticity relief is needed.

Fast-acting, short-duration muscle relaxant designed for the management of muscle spasms.

COPAY INFORMATION

UP TO \$75 Off 1 Month script

UP TO \$120 Off 3 Month script

BIN #: 610600

PCN #: AS

GROUP #: 349

ID #: 34905139472

Help Desk: 877-274-3244

*Terms and conditions may apply.

HOW TO WRITE:

Zanaflex®

Take 1 capsule by mouth every 6 to 8 hours as needed.

8 mg

**Also Available
In Generic**



Visit our website at:
TRIFLUENTPHARMA.COM

©2026 Trifluent Pharma, LLC.
All rights reserved.
LB-TRI-02 Rev. 05/2026

Zanaflex®- tizanidine hydrochloride capsule
Trifluent Pharma, LLC

HIGHLIGHTS OF PRESCRIBING INFORMATION

These highlights do not include all the information needed to use TIZANIDINE HYDROCHLORIDE CAPSULES safely and effectively. See full prescribing information for TIZANIDINE HYDROCHLORIDE CAPSULES.

TIZANIDINE HYDROCHLORIDE capsules, for oral use

Initial U.S. Approval: 1996

RECENT MAJOR CHANGES

Recent Major Changes

Indications and Usage (1) 02/2025

Dosage and Administration (2.1, 2.2, 2.3, 2.4, 2.5, 2.6) 02/2025

Contraindications (4) 02/2025

Warnings and Precautions (5.1, 5.2, 5.4, 5.5) 02/2025

INDICATIONS AND USAGE

Tizanidine hydrochloride is a central alpha-2-adrenergic agonist indicated for the treatment of spasticity. (1)

DOSAGE AND ADMINISTRATION

- Monitoring of aminotransferase levels is recommended at baseline and 1 month after maximum dose is achieved. (2.1)
- Recommended starting dose: 2 mg by mouth every 6 to 8 hours, as needed, up to a maximum of 3 doses in 24 hours (2.2)
- Dosage can be increased by 2 mg to 4 mg per dose every 1 to 4 days; maximum total daily dose is 36 mg (2.2)
- Tizanidine pharmacokinetics differs between tablets and capsules, and when taken with or without food. These differences could result in a change in tolerability and control of symptoms. Consistent administration with respect to food is recommended. If substitution between dosage forms is necessary, take into consideration these pharmacokinetic differences. (2.1, 2.6, 12.3)
- Patients with renal impairment (creatinine clearance <25 mL/min or hepatic impairment: use lower individual doses during titration. If higher doses are required, individual doses rather than dosing frequency should be increased. (2.3, 2.4)
- To discontinue tizanidine hydrochloride, decrease dose slowly to minimize the risk of withdrawal adverse reactions. (2.5)

DOSAGE FORMS AND STRENGTHS

- Capsules: 8 mg (3)

CONTRAINDICATIONS

- Concomitant use with strong CYP1A2 inhibitors (4, 7.1)
- Patients with a history of hypersensitivity to tizanidine or the ingredients in tizanidine hydrochloride capsules (4, 5.5)

WARNINGS AND PRECAUTIONS

- Hypotension: monitor for signs and symptoms of hypotension, in particular in patients receiving concurrent antihypertensives; tizanidine should not be used with other α_2 -adrenergic agonists (5.1, 7.7)
- Risk of liver injury: monitor ALTs; discontinue tizanidine if liver injury occurs (5.2)
- Sedation: tizanidine may interfere with everyday activities; sedative effects of Tizanidine, alcohol, and other central nervous system (CNS) depressants are

additive (5.3, 7.4)

- Hallucinations: consider discontinuation of tizanidine (5.4)

ADVERSE REACTIONS

The most common adverse reactions (greater than 10% of patients taking tizanidine and greater than in patients taking placebo) were dry mouth, somnolence, asthenia and dizziness. (6.1)

To report SUSPECTED ADVERSE REACTIONS, contact Trifluent Pharma at 1-210-944-6920 or FDA at 1-800-FDA-1088 or www.fda.gov/medwatch.

DRUG INTERACTIONS

Moderate or weak CYP1A2 inhibitors: avoid concomitant use; may cause hypotension, bradycardia, or excessive drowsiness; if concomitant use is necessary and adverse reactions occur, reduce tizanidine dosage or discontinue. (7.2, 12.3)

USE IN SPECIFIC POPULATIONS

- Pregnancy: Based on animal data, may cause fetal harm (8.1)
- Geriatric use: Tizanidine should be used with caution in elderly patients because clearance is decreased four-fold (8.5)

See 17 for PATIENT COUNSELING INFORMATION

Revised 02/2026

FULL PRESCRIBING INFORMATION: CONTENTS*

1 INDICATIONS AND USAGE

2 DOSAGE AND ADMINISTRATION

- 2.1 Recommended Evaluation and Testing Before and After Initiating Tizanidine
- 2.2 Recommended Dosage
- 2.3 Recommended Dosage in Patients with Renal Impairment
- 2.4 Recommended Dosage in Patients with Hepatic Impairment
- 2.5 Discontinuation of Tizanidine
- 2.6 Switching Between With/Without Food and Different Tizanidine Dosage Forms

3 DOSAGE FORMS AND STRENGTHS

4 CONTRAINDICATIONS

5 WARNINGS AND PRECAUTIONS

- 5.1 Hypotension
- 5.2 Liver Injury
- 5.3 Sedation
- 5.4 Hallucinos/psychotic-Like Symptoms
- 5.5 Hypersensitivity Reactions
- 5.6 Withdrawal Adverse Reactions

6 ADVERSE REACTIONS

- 6.1 Clinical Trials Experience
- 6.2 Postmarketing Experience

7 DRUG INTERACTIONS

- 7.1 Strong CYP1A2 Inhibitors
- 7.2 Moderate or Weak CYP1A2 Inhibitors
- 7.3 Oral Contraceptives
- 7.4 Alcohol and Other CNS Depressants
- 7.5 α_2 -Adrenergic Agonists
- 7.6 Antihypertensive Medications

8 USE IN SPECIFIC POPULATIONS

- 8.1 Pregnancy
- 8.2 Lactation
- 8.3 Females and Males of Reproductive Potential
- 8.4 Pediatric Use
- 8.5 Geriatric Use
- 8.6 Renal Impairment
- 8.7 Hepatic Impairment

9 DRUG ABUSE AND DEPENDENCE

- 9.1 Controlled Substance
- 9.2 Abuse
- 9.3 Dependence

10 OVERDOSAGE

11 DESCRIPTION

12 CLINICAL PHARMACOLOGY

- 12.1 Mechanism of Action
- 12.2 Pharmacodynamics
- 12.3 Pharmacokinetics

13 NONCLINICAL TOXICOLOGY

- 13.1 Carcinogenesis, Mutagenesis, Impairment of Fertility

14 CLINICAL STUDIES

16 HOW SUPPLIED/STORAGE AND HANDLING

- 16.1 How Supplied

16 HOW SUPPLIED/STORAGE AND HANDLING

*Sections or subsections omitted from the full prescribing information are not listed.

FULL PRESCRIBING INFORMATION

1 INDICATIONS AND USAGE

Tizanidine hydrochloride is indicated for the treatment of spasticity in adults.

2 DOSAGE AND ADMINISTRATION

2.1 Recommended Evaluation and Testing Before and After Initiating Tizanidine

Monitoring of aminotransferase levels is recommended at baseline and 1 month after maximum dose is achieved [see Warnings and Precautions (5.2)]

2.2 Recommended Dosage

The recommended starting dose is 2 mg by mouth every 6 to 8 hours, as needed, to a maximum of three doses in 24 hours. Dosage can be gradually increased every 1 to 4 days by 2 mg to 4 mg at each dose based on clinical response and tolerability. The maximum total daily dosage is 36 mg. Single doses greater than 16 mg have not been studied. There are pharmacokinetic differences when administering tizanidine hydrochloride capsules between the fed or fasted state [see Clinical Pharmacology (12.3)]. Tizanidine hydrochloride capsules may be taken with or without food; however, consistent administration with respect to food is recommended to reduce variability in tizanidine plasma exposure. Because of the short duration of therapeutic effect, treatment with tizanidine hydrochloride capsules should be reserved for those daily activities and times when relief of spasticity is most important.

2.3 Recommended Dosage in Patients with Renal Impairment

In patients with creatinine clearance < 25mL/min, use lower individual doses during titration. If higher doses are required, the individual doses rather than dosing frequency should be increased [see Use in Specific Populations (8.6) and Clinical Pharmacology (12.3)].

2.4 Recommended Dosage in Patients with Hepatic Impairment

In patients with hepatic impairment, use lower individual doses during titration. If higher doses are required, individual doses rather than dosing frequency should be increased [see Use in Specific Populations (8.7) and Clinical Pharmacology (12.3)].

2.5 Discontinuation of Tizanidine

When discontinuing tizanidine, particularly in patients who have been receiving high doses for long periods or who

may be on concomitant treatment with narcotics, decrease the dosage by 2 mg to 4 mg per day to minimize the risk of withdrawal adverse reactions. [see Drug Abuse and Dependence (9.3)].

2.6 Switching Between With/Without Food and Different Tizanidine Dosage Forms

There are pharmacokinetic differences when:

- switching between administration of tizanidine hydrochloride capsules with or without food
- switching between dosage forms if being administered with food.

If these situations occur, monitor patients for therapeutic effect or adverse reactions [see Dosage and Administration (2.2) and Clinical Pharmacology (12.3)].

3 DOSAGE FORMS AND STRENGTHS

Capsules

8 mg: Size 2 hard gelatin capsule filled with off white to pale yellow granular powder.

Cap: Blue opaque, imprinted with "Λ" in black ink and Body: White opaque, imprinted with "A46" in black ink

4 CONTRAINDICATIONS

Tizanidine is contraindicated in patients:

- taking strong CYP1A2 inhibitors [see Drug Interactions (7.1)]
- with a history of hypersensitivity to tizanidine or the ingredients in tizanidine. Symptoms have included anaphylaxis and angioedema [see Warnings and Precautions (5.5)].

5 WARNINGS AND PRECAUTIONS

5.1 Hypotension

Tizanidine is an α_2 -adrenergic agonist that can produce hypotension [see Adverse Reactions (6.1) and Drug Interactions (7.5)]. Syncope has been reported in patients treated with tizanidine in the postmarketing setting. The risk of hypotension may be minimized by dose titration; monitoring for signs and symptoms of hypotension prior to dosage increase may minimize the risks associated with hypotension. In addition, patients moving from a supine to fixed upright position may be at increased risk for hypotension and orthostatic effects. Monitor for hypotension when tizanidine is used in patients receiving concurrent antihypertensive therapy. It is not recommended that tizanidine be used with other α_2 -adrenergic agonists. Clinically significant hypotension (decreases in both systolic and diastolic pressure) has been reported with concomitant administration of tizanidine and strong CYP1A2 inhibitors [see Clinical Pharmacology (12.3)]. Therefore, concomitant use of tizanidine hydrochloride capsules with strong CYP1A2 inhibitors is contraindicated [see Contraindications (4) and Drug Interactions (7.1)].

5.2 Liver Injury

Tizanidine may cause hepatocellular liver injury. Liver function test abnormality and hepatotoxicity have been observed with tizanidine [see Adverse Reactions (6.1, 6.2)]. Monitoring of aminotransferase levels is recommended for baseline and 1 month after maximum dose is achieved, or if hepatic injury is suspected [see Dosage and Administration (2.1) and Use in Specific Populations (8.7)].

5.3 Sedation

Tizanidine can cause sedation, which may interfere with everyday activity. In the multiple dose studies of tizanidine, the prevalence of patients with sedation peaked following

the first week of titration and then remained stable for the duration of the maintenance phase of the study [see Adverse Reactions (6.1)]. The CNS depressant effects of tizanidine with alcohol and other CNS depressants (e.g., benzodiazepines, opioids, tricyclic antidepressants) may be additive [see Drug Interactions (7.4)]. Monitor patients who take tizanidine with another CNS depressant for symptoms of excess sedation.

5.4 Hallucinosi s/Psychotic-Like Symptoms

Tizanidine use has been associated with hallucinations. Formed, visual hallucinations or delusions have been reported in 5 of 170 patients (3%) in two North American controlled clinical studies. Most of the patients were aware that the events were unreal. One patient developed psychosis in association with the hallucinations. One patient among these 5 continued to have problems for at least 2 weeks following discontinuation of tizanidine. Hallucinations have also been reported with tizanidine use in the postmarketing setting. Consider discontinuing tizanidine in patients who develop hallucinations.

5.5 Hypersensitivity Reactions

Tizanidine can cause anaphylaxis. Signs and symptoms of hypersensitivity, including respiratory compromise, urticaria, and angioedema of the throat and tongue, have been reported. Tizanidine is contraindicated in patients with a history of hypersensitivity reactions to tizanidine [see Contraindications (4)].

5.6 Withdrawal Adverse Reactions

Tizanidine can cause withdrawal adverse reactions, which include rebound hypertension, tachycardia, and hypertonia. To minimize the risk of these reactions, particularly in patients who have been receiving high doses of tizanidine (20 to 28 mg daily) for long periods of time (9 weeks or more) or who may be on concomitant treatment with narcotics, the dosage should be decreased slowly) [see Dosage and Administration (2.5)].

6 ADVERSE REACTIONS

The following clinically significant adverse reactions are described elsewhere in other sections of the prescribing information:

- Hypotension [see Warnings and Precautions (5.1)]
- Liver Injury [see Warnings and Precautions (5.2)]
- Sedation [see Warnings and Precautions (5.3)]
- Hallucinosi s/Psychotic-Like Symptoms [see Warnings and Precautions (5.4)]
- Hypersensitivity Reactions [see Warnings and Precautions (5.5)]
- Withdrawal Adverse Reactions [see Warnings and Precautions (5.6)]

6.1 Clinical Trials Experience

Because clinical studies are conducted under widely varying conditions, adverse reaction rates observed in the clinical studies of a drug cannot be directly compared to rates in the clinical studies of another drug and may not reflect the rates observed in clinical practice. The safety of tizanidine has been evaluated in three double-blind, randomized, placebo-controlled clinical studies [see Clinical Studies (14)]. Two studies were conducted in patients with multiple sclerosis and one in patients with spinal cord injury. Each study had a 13-week active treatment period which included a 3-week titration phase to the maximum tolerated dose up to 36 mg/day in three divided doses, a 9-week plateau phase where the dose of tizanidine was held constant and a 1-week dose tapering period. In all, 264 patients received tizanidine and 261 patients received

placebo. Across the three studies approximately 51% of patients were women, and the median dose during the plateau phase ranged from 20 to 28 mg/day. The most common adverse reactions (>10% of patients treated with tizanidine) reported in multiple dose, placebo-controlled clinical studies involving 264 patients with spasticity were dry mouth, somnolence/sedation, asthenia (weakness, fatigue and/or tiredness) and dizziness. Three-quarters of the patients rated the events as mild to moderate and one-quarter of the patients rated the reactions as being severe. These events appeared to be dose related. Table 1 lists adverse reactions that were reported in greater than 2% of patients in three multiple dose, placebo-controlled studies who received tizanidine where the frequency in the tizanidine group was greater than the placebo group.

Table 1: Multiple Dose, Placebo-Controlled Studies - Adverse Reactions Reported in >2% of Patients Treated with Zanaflex Tablets and Incidence Greater than

Adverse Reaction	Placebo	Zanaflex
	N = 261 %	Tablet N = 264 %
Dry mouth	10	49
Somnolence	10	48
Asthenia *	16	41
Dizziness	4	16
UTI	7	10
Infection	5	6
Liver test abnormality	2	6
Constipation	1	4
Vomiting	0	3
Speech disorder	0	3
Amblyopia (blurred vision)	<1	3
Urinary frequency	2	3
Flu syndrome	2	3
Dyskinesia	0	3
Nervousness	<1	3
Pharyngitis	1	3
Rhinitis	2	3

* includes weakness, fatigue, and/or tiredness

In the single dose, placebo-controlled study involving 142 patients with spasticity due to multiple sclerosis (Study 1) [see Clinical Studies (14)], the patients were specifically asked if they had experienced any of the four most common adverse reactions: dry mouth, somnolence (drowsiness), asthenia (weakness, fatigue and/or tiredness) and dizziness. In addition, hypotension and bradycardia were observed. The occurrence of these reactions is summarized in Table 2. Other events were, in general, reported at a rate of 2% or less.

Table 2: Single Dose, Placebo-Controlled Study - Common Adverse Reactions Reported with Zanaflex

Adverse Reaction	Placebo	Zanaflex	Zanaflex
	N = 48 %	Tablets 8 mg, N = 45 %	Tablets 16 mg, N = 49 %
Somnolence	31	78	92
Dry mouth	35	76	88
Asthenia *	40	67	78
Dizziness	4	22	45
Hypotension	0	16	33
Bradycardia	0	2	10

6.2 Postmarketing Experience

The following adverse reactions have been identified during post approval use of tizanidine. Because these reactions are reported voluntarily from a population of uncertain size, it is not always possible to reliably estimate their frequency or

establish a causal relationship to drug exposure.

- Cardiac Disorders: Ventricular tachycardia, decreased blood pressure
- Hepatobiliary disorders: Hepatotoxicity [see Warnings and Precautions (5.2)], hepatitis
- Musculoskeletal and Connective Tissue Disorders: arthralgia
- Nervous System Disorders: Convulsion, paresthesia, tremor, muscle spasms
- Psychiatric Disorders: Hallucinations [see Warnings and Precautions (5.4)], depression
- Skin and Subcutaneous Tissue Disorders: Stevens Johnson Syndrome, anaphylactic reaction [see Warnings and Precautions (5.5)], exfoliative dermatitis, rash

7 DRUG INTERACTIONS

7.1 Strong CYP1A2 Inhibitors

Concomitant use of tizanidine with strong cytochrome P450 1A2 (CYP1A2) inhibitors (e.g., fluvoxamine, ciprofloxacin) is contraindicated. Changes in pharmacokinetics of tizanidine when administered with a strong CYP1A2 inhibitor resulted in significantly decreased blood pressure, increased drowsiness, and increased psychomotor impairment [see Contraindications (4) and Clinical Pharmacology (12.3)].

7.2 Moderate or Weak CYP1A2 Inhibitors

Concomitant use of tizanidine with moderate or weak CYP1A2 inhibitors (e.g., zileuton, antiarrhythmics [amiodarone, mexiletine, propafenone, and verapamil], cimetidine, famotidine, oral contraceptives, acyclovir, and ticlopidine) should be avoided. If concomitant use is clinically necessary, and adverse reactions such as hypotension, bradycardia, or excessive drowsiness occur, reduce tizanidine dosage or discontinue tizanidine therapy [see Clinical Pharmacology (12.3)].

7.3 Oral Contraceptives

Concomitant use of tizanidine with oral contraceptives is not recommended. However, if concomitant use is clinically necessary, and adverse reactions such as hypotension, bradycardia, or excessive drowsiness occur, reduce or discontinue tizanidine therapy [see Clinical Pharmacology (12.3)].

7.4 Alcohol and Other CNS Depressants

Alcohol increases the exposure of tizanidine after administration of tizanidine. This was associated with an increase in adverse reactions of tizanidine. Concomitant use of tizanidine with CNS depressants (e.g., alcohol, benzodiazepines, opioids, tricyclic antidepressants) may cause additive CNS depressant effects, including sedation. Monitor patients who take tizanidine with another CNS depressant for symptoms of excess sedation [see Clinical Pharmacology (12.3)].

7.5 α 2-Adrenergic Agonists

Concomitant use of tizanidine with other α -adrenergic agonists is not recommended because hypotensive effects may be cumulative [see Warnings and Precautions (5.1)].

7.6 Antihypertensive Medications

Concomitant use of tizanidine with antihypertensive medications may cause additive hypotensive effects [see Warnings and Precautions (5.1)]. Monitor patients who take tizanidine with antihypertensive medications for hypotension.

8 USE IN SPECIFIC POPULATIONS

8.1 Pregnancy

Risk Summary

There are no adequate data on the developmental risk associated with use of tizanidine in pregnant women. In animal studies, administration of tizanidine during pregnancy resulted in developmental toxicity (embryofetal and postnatal offspring mortality and growth deficits) at doses less than those used clinically, which were not associated with maternal toxicity (see Animal Data). In the U.S. general population, the estimated background risk of major birth defects and miscarriage in clinically recognized pregnancies is 2% - 4% and 15% - 20%, respectively. The background risk of major birth defects and miscarriage for the indicated population is unknown.

Data

Animal Data

Oral administration of tizanidine (0.3 to 100 mg/kg/day) to pregnant rats during the period of organogenesis resulted in embryofetal and postnatal offspring mortality and reductions in body weight at doses of 30 mg/kg/day and above. Maternal toxicity was observed at the highest dose tested. The no-effect dose for embryofetal developmental toxicity in rats (3 mg/kg/day) is similar to the maximum recommended human dose (MRHD) of 36 mg/day on a body surface area (mg/m²) basis. Oral administration of tizanidine (1 to 100 mg/kg/day) to pregnant rabbits during the period of organogenesis resulted in embryofetal and postnatal offspring mortality at all doses. Maternal toxicity was observed at the highest dose tested. Oral administration of tizanidine (10 and 30 mg/kg/day) during the perinatal period of pregnancy (2-6 days prior to delivery) resulted in increased postnatal offspring mortality at both doses. A noeffect dose for embryofetal developmental toxicity in rabbit was not identified. The lowest dose tested (1 mg/kg/day) is less than the MRHD on a mg/m² basis. In a pre- and postnatal development study in rats, oral administration of tizanidine (3 to 30 mg/kg/day) resulted in increased postnatal offspring mortality. A no-effect dose for pre- and postnatal developmental toxicity was not identified. The lowest dose tested (3 mg/kg/day) is similar to the MRHD on a mg/m² basis, respectively.

8.2 Lactation

Risk Summary

There are no data on the presence of tizanidine in human milk, the effects on the breastfed infant, or the effects on human milk production. Animal studies have reported the presence of tizanidine in the milk of lactating animals. The developmental and health benefits of breastfeeding should be considered along with the mother's clinical need for tizanidine and any potential adverse effects on the breastfed infant from tizanidine or from the underlying maternal condition.

8.3 Females and Males of Reproductive Potential

There are no adequate and well-controlled studies in humans on the effect of tizanidine on female or male reproductive potential. Oral administration of tizanidine to male and female rats resulted in adverse effects on fertility [see Nonclinical Toxicology (13.1)].

8.4 Pediatric Use

Safety and effectiveness in pediatric patients have not been established.

Juvenile Animal Toxicity Data

Oral administration of tizanidine (0, 1, 3, 10 mg/kg/day) to juvenile rats from postnatal day (PND) 7 through PND 70 resulted in delayed sexual maturation in males at all doses, reduced body weight gain, delayed sexual maturation in

females, and bilateral corneal crystals at the mid and high doses. Corneal crystals were still observed at the mid and high doses after a three-week recovery period. Neurobehavioral deficits were observed on a learning and memory task at the high dose. A no-effect dose for adverse effects on postnatal development not identified.

8.5 Geriatric Use

Tizanidine is known to be substantially excreted by the kidney, and the risk of adverse reactions to this drug may be greater in patients with impaired renal function. Because elderly patients are more likely to have decreased renal function, care should be taken in dose selection, and it may be useful to monitor renal function. Clinical studies of tizanidine did not include sufficient numbers of subjects aged 65 and over to determine whether they respond differently than younger subjects. Pharmacokinetic data showed that younger subjects cleared tizanidine faster than the elderly subjects [see Clinical Pharmacology (12.3)]. In elderly patients with renal insufficiency (creatinine clearance < 25 mL/min), tizanidine clearance is reduced compared to healthy elderly subjects; this would be expected to lead to a longer duration of clinical effect. During titration, the individual doses should be reduced. If higher doses are required, individual doses rather than dosing frequency should be increased. Monitor elderly patients because they may have an increased risk for adverse reactions associated with tizanidine.

8.6 Renal Impairment

In patients with renal insufficiency (creatinine clearance < 25 mL/min), clearance of tizanidine was reduced [see Clinical Pharmacology (12.3)]. In these patients, dosage reduction if recommended [see Dosage and Administration (2.3)]. Because the risk of adverse reactions to tizanidine may be greater in patients with impaired renal function, monitor these patients closely for the onset or increase in severity of common adverse reactions [see Adverse Reactions (6.1)].

8.7 Hepatic Impairment

Tizanidine should be used with caution in patients with hepatic impairment. The influence of hepatic impairment on the pharmacokinetics of tizanidine has not been evaluated. Because tizanidine is extensively metabolized in the liver, hepatic impairment would be expected to have significant effects on pharmacokinetics of tizanidine. [see Warnings and Precautions (5.2) and Clinical Pharmacology (12.3)]. In patients with hepatic impairment, dosage reduction is recommended [see Dosage and Administration (2.4)].

9 DRUG ABUSE AND DEPENDENCE

9.1 Controlled Substance

Tizanidine hydrochloride capsules contains tizanidine, which is not a controlled substance.

9.2 Abuse

Abuse is the intentional, non-therapeutic use of a drug, even once, for its desirable psychological or physiological effects. Abuse potential was not evaluated in human studies. Rats were able to distinguish tizanidine from saline in a standard discrimination paradigm, after training, but failed to generalize the effects of morphine, cocaine, diazepam, or phenobarbital to tizanidine.

9.3 Dependence

Physical dependence is a state that develops as a result

of physiological adaptation in response to repeated drug use, manifested by withdrawal signs and symptoms after abrupt discontinuation or significant dose reduction of a drug. Tizanidine is closely related to clonidine, which is often abused in combination with narcotics and is known to cause symptoms of rebound upon abrupt withdrawal. Cases of rebound symptoms on sudden withdrawal of tizanidine have been reported. The case reports suggest that these patients were also misusing narcotics. Withdrawal symptoms are more likely to occur in cases where high doses are used, especially for prolonged periods, or with concomitant use of narcotics. If therapy needs to be discontinued, the dose should be decreased slowly to minimize the risk of withdrawal symptoms [see Dosage and Administration (2.5)].

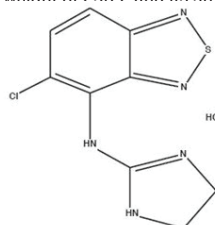
Monkeys were shown to self-administer tizanidine in a dose-dependent manner, and abrupt cessation of tizanidine produced transient signs of withdrawal at doses > 35 times the maximum recommended human dose on a mg/m basis. These transient withdrawal signs (increased locomotion, body twitching, and aversive behavior toward the observer) were not reversed by naloxone administration.

10 OVERDOSAGE

A review of the safety surveillance database revealed cases of intentional and accidental tizanidine overdose. Some of the cases resulted in fatality and many of the intentional overdoses were with multiple drugs including CNS depressants. The clinical manifestations of tizanidine overdose were consistent with its known pharmacology. In the majority of cases, a decrease in sensorium was observed including lethargy, somnolence, confusion and coma. Depressed cardiac function is also observed including most often bradycardia and hypotension. Respiratory depression is another common feature of tizanidine overdose. Should overdose occur, ensure the adequacy of an airway and monitor cardiovascular and respiratory function. Dialysis is not likely to be an efficient method of removing tizanidine from the body [see Description (11)]. In general, symptoms resolve within one to three days following discontinuation of tizanidine and administration of appropriate therapy. Because of the similar mechanism of action, symptoms and management of tizanidine overdose are similar to that following clonidine overdose. For the most recent information concerning the management of overdose, contact a poison control center.

11 DESCRIPTION

Tizanidine hydrochloride capsules contains tizanidine hydrochloride as the active ingredient, which is a central alpha 2-adrenergic agonist. Tizanidine Hydrochloride is a almost white to slightly yellow, crystalline powder. Tizanidine is slightly soluble in water and methanol. Its chemical name is 5-chloro-4-(2-imidazolyl-2-ylamino)-2,1,3- benzothiadiazole monohydrochloride. It has a molecular formula of C₁₂H₈ClN₅S-HCl and a molecular weight of 290.2 and its structural formula is:



Tizanidine Hydrochloride Capsules are supplied as 8 mg capsules for oral administration. Tizanidine Hydrochloride Capsules contain the active ingredient, tizanidine hydrochloride (9.16 mg equivalent to 8 mg tizanidine base), and the inactive ingredients microcrystalline cellulose, lactose monohydrate, hypromellose, colloidal silicon dioxide, croscarmellose sodium, stearic acid, gelatin, titanium dioxide, FD&C Blue 1 and FD&C Red 40. The imprinting ink contains shellac, isopropyl alcohol, propylene glycol, dehydrated alcohol, butyl alcohol, strong ammonium solution, black iron oxide and potassium hydroxide.

12 CLINICAL PHARMACOLOGY

12.1 Mechanism of Action

Tizanidine is a central alpha-2-adrenergic receptor agonist and presumably reduces spasticity by increasing presynaptic inhibition of motor neurons. The effects of tizanidine are greatest on polysynaptic pathways. The overall effect of these actions is thought to reduce facilitation of spinal motor neurons.

12.2 Pharmacodynamics

The CNS depressant effects of tizanidine and alcohol are additive [see Warnings and Precautions (5.3) and Drug Interactions (7.4)].

12.3 Pharmacokinetics

Tizanidine has linear pharmacokinetics over the doses studied in clinical development [1 mg (half the recommended dosage) to 20 mg]. Tizanidine capsules and tablets are bioequivalent to each other under fasting conditions, but not under fed conditions (see Absorption, Effect of Food).

Absorption

Following oral administration, tizanidine is essentially completely absorbed. The absolute oral bioavailability of tizanidine is approximately 40% (CV = 24%), due to extensive firstpass hepatic metabolism.

Effect of Food

There are pharmacokinetic differences between tizanidine capsules and tizanidine tablets with respect to administration with food. A single dose of either two 4 mg tablets or two 4 mg capsules was administered under fed and fasting conditions in an open-label, four-period, randomized crossover study in 96 volunteers, of whom 81 were eligible for the statistical analysis. Pharmacokinetics under fed conditions were different than under fasting conditions and vary by dosage form.

Tablets or Capsules - Fasting

- Tmax was 1.0 hours after dosing
- T1/2 was approximately 2 hours

Tablets - Fed

- Mean Cmax was increased by approximately 30%
- Median Tmax was increased by 25 minutes, to 1 hour and 25 minutes.
- Extent of absorption was increased approximately 30%

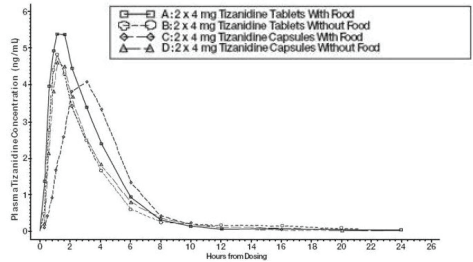
Capsules - Fed

- Mean Cmax was decreased by 20% (consequently, approximately 66% the Cmax for the tablet when administered with food)
- Median Tmax was increased 2 to 3 hours
- Extent of absorption was increased approximately 10% (consequently, approximately 80% of the amount absorbed from the tablet administered with food)

Capsule Content Sprinkled on Applesauce Compared to administration of an intact capsule while fasting:

- Cmax and AUC was increased 15%-20%
- Tmax was decreased 15 minutes

Figure 1: Mean Tizanidine Concentration vs. Time Profiles for Tizanidine Tablets and Tizanidine Capsules (2 X 4 mg) Under Fasting and Fed Conditions



Distribution

Tizanidine is extensively distributed throughout the body with a mean steady state volume of distribution of 2.4 L/kg (CV=21%) following intravenous administration in healthy adult volunteers. Tizanidine is approximately 30% bound to plasma proteins.

Elimination

Metabolism

Tizanidine has a half-life of approximately 2.5 hours (CV=33%). Approximately 95% of an administered dose is metabolized. The primary cytochrome P450 isoenzyme involved in tizanidine metabolism is CYP1A2. Tizanidine metabolites are not known to be active; their half-lives range from 20 to 40 hours.

Excretion

Following single and multiple oral dosing of C-tizanidine, an average of 60% and 20% of total radioactivity was recovered in the urine and feces, respectively.

Specific Populations

Geriatric Patients

No specific pharmacokinetic study was conducted to investigate age effects. Cross study comparison of pharmacokinetic data following single dose administration of 6 mg tizanidine showed that younger subjects cleared the drug four times faster than the elderly subjects [see Use in Specific Populations (8.5)].

Patients with Hepatic Impairment

The influence of hepatic impairment on the pharmacokinetics of tizanidine has not been evaluated. Because tizanidine is extensively metabolized in the liver, hepatic impairment would be expected to have significant effects on pharmacokinetics of tizanidine. [see 14 Use in Specific Populations (8.7)].

Patients with Renal Impairment

Tizanidine clearance is reduced by more than 50% in elderly patients with renal insufficiency (creatinine clearance <25 mL/min) compared to healthy elderly subjects; this would be expected to lead to a longer duration of clinical effect. [see Use in Specific Populations (8.6)].

Gender Effects

No specific pharmacokinetic study was conducted to investigate gender effects. Retrospective analysis of pharmacokinetic data following single and multiple dose administration of 4 mg tizanidine, however, showed that gender had no effect on the pharmacokinetics of tizanidine.

Drug Interactions CYP1A2 Inhibitors

The effects of coadministration of fluvoxamine and ciprofloxacin, both strong CYP1A2 inhibitors, on the pharmacokinetics of a single 4 mg dose of tizanidine was studied in 10 healthy subjects. The C_{max}, AUC, and half-life of tizanidine increased by 12-fold, 33-fold, and 3-fold, respectively, with coadministration of fluvoxamine. The C_{max} and AUC of tizanidine increased by 7-fold and 10-fold, respectively, with coadministration of ciprofloxacin [see Contraindications (4)]. There have been no clinical studies evaluating the effects of other CYP1A2 inhibitors on tizanidine [see Drug Interactions (7.2)]. In vitro studies of cytochrome P450 isoenzymes using human liver microsomes indicate that neither tizanidine nor the major metabolites are likely to affect the metabolism of other drugs metabolized by cytochrome P450 isoenzymes.

Oral Contraceptives

No specific pharmacokinetic study was conducted to investigate interaction between oral contraceptives and tizanidine. Retrospective analysis of population pharmacokinetic data following single and multiple dose administration of 4 mg tizanidine, however, showed that women concurrently taking oral contraceptives had 50% lower clearance of tizanidine compared to women not on oral contraceptives [see Drug Interactions (7.3)].

Acetaminophen

Tizanidine delayed the T_{max} of acetaminophen by 16 minutes. Acetaminophen did not affect the pharmacokinetics of tizanidine.

Alcohol

Alcohol increased the AUC and C_{max} of tizanidine by approximately 20% and 15%, respectively [see Drug Interactions (7.4)].

13 NONCLINICAL TOXICOLOGY

13.1 Carcinogenesis, Mutagenesis, Impairment of

Fertility Carcinogenesis

Tizanidine was administered to mice for 78 weeks at oral doses up to 16 mg/kg/day, which is 2 times the maximum recommended human dose (MRHD) of 36 mg/day on a body surface area (mg/m²) basis. Tizanidine was administered to rats for 104 weeks at oral doses up to 9 mg/kg/day, which is 2.5 times the MRHD on a mg/m basis. There was no increase in tumors in either species.

Mutagenesis

Tizanidine was negative in in vitro (bacterial reverse mutation [Ames], mammalian gene mutation, and chromosomal aberration test in mammalian cells) and in vivo (bone marrow micronucleus, and cytogenetics) assay.

Impairment of Fertility

Oral administration of tizanidine to rats prior to and during mating and continuing during early pregnancy in females resulted in reduced fertility in male and female rats at doses of 30 and 10 mg/kg/day, respectively. No effect on

fertility was observed at doses of 10 (male) and 3 (female) mg/kg/day, which are approximately 3 times and similar to the MRHD, respectively, on a mg/m basis.

14 CLINICAL STUDIES

The efficacy of tizanidine for the treatment of spasticity was demonstrated in two adequate and well-controlled studies in patients with multiple sclerosis or spinal cord injury (Studies 1 and 2).

Single-Dose Study in Patients with Multiple Sclerosis with Spasticity

In Study 1, 140 patients with spasticity caused by multiple sclerosis were randomized to receive single oral doses of 8 mg or 16 mg of tizanidine, or placebo. Patients and assessors were blind to treatment assignment and efforts were made to reduce the likelihood that assessors would become aware indirectly of treatment assignment (e.g., they did not provide direct care to patients and were prohibited from asking questions about side effects).

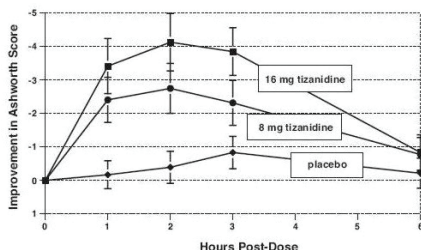
Response was assessed by physical examination; muscle tone was rated on a 5 point scale (Ashworth score) as follows:

- 0 = normal muscle tone
- 1 = slight spastic catch
- 2 = more marked muscle resistance
- 3 = considerable increase in tone, making passive movement difficult
- 4 = a muscle immobilized by spasticity

Spasm counts were also collected. Assessments were made at 1, 2, 3 and 6 hours after treatment. A statistically significant reduction of the Ashworth score for tizanidine compared to placebo was detected at 1, 2 and 3 hours after treatment. Figure 2 below shows a comparison of the mean change in muscle tone from baseline as measured by the Ashworth scale. The greatest reduction in muscle tone was 1 to 2 hours after treatment. By 6 hours after treatment, muscle tone in the 8 and 16 mg tizanidine groups was indistinguishable from muscle tone in patients who received placebo. Within a given patient, improvement in muscle tone was correlated with plasma concentration. Plasma concentrations were variable from patient to patient at a given dose.

Although 16 mg produced a larger effect, adverse events including hypotension were more common and more severe than in the 8 mg group. There were no differences in the number of spasms occurring in each group.

Figure 2: Single Dose Study - Mean Change in Muscle Tone from Baseline as Measured by the Ashworth Scale +/- 95% Confidence Interval (A Negative Ashworth Score Signifies an Improvement in Muscle Tone from Baseline)



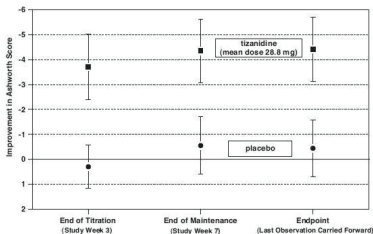
Seven-Week Study in Patients with Spinal Cord Injury with Spasticity

In a 7-week study (Study 2), 118 patients with spasticity secondary to spinal cord injury were randomized to either placebo or tizanidine. Steps similar to those taken in the first study were employed to ensure the integrity of blinding.

Patients were titrated over 3 weeks up to a maximum tolerated dose or 36 mg daily given in three unequal doses (e.g., 10 mg given in the morning and afternoon and 16 mg given at night). Patients were then maintained on their maximally tolerated dose for 4 additional weeks (i.e., maintenance phase). Throughout the maintenance phase, muscle tone was assessed on the Ashworth scale within a period of 2.5 hours following either the morning or afternoon dose. The number of daytime spasms was recorded daily by patients.

At endpoint (the protocol-specified time of outcome assessment), there was a statistically significant reduction in muscle tone and frequency of spasms in the tizanidine treated group compared to placebo. The reduction in muscle tone was not associated with a reduction in muscle strength (a desirable outcome) but also did not lead to any consistent advantage of tizanidine treated patients on measures of activities of daily living. Figure 3 below shows a comparison of the mean change in muscle tone from baseline as measured by the Ashworth scale.

Figure 3 - Seven Week Study - Mean Change in Muscle Tone 0.5-2.5 Hours After Dosing as Measured by the Ashworth Scale +/-95% Confidence Interval (A Negative Ashworth Score Signifies an Improvement in Muscle Tone from Baseline)



16 HOW SUPPLIED/STORAGE AND HANDLING

16.1 How Supplied

Zanaflex® (Tizanidine Hydrochloride) Capsules

Tizanidine Hydrochloride Capsules capsules are available as two-piece hard gelatin capsules containing tizanidine hydrochloride 9.16 mg equivalent to 8 mg tizanidine base.

- The 8 mg capsules have Size 2 Hard gelatin capsule filled with off white to pale yellow granular powder. Cap: Blue opaque imprinted with “Λ” in black ink and Body: White opaque, imprinted with “A46” in black ink; bottles of 60 capsules (NDC 73352-089-60)

16.2 Storage and Handling

Store at 20°C to 25°C (68 °F to 77°F); excursions permitted between 15°C to 30°C (59°F to 86°F) [see USP Controlled Room Temperature]. Dispense in containers with child resistant closure.

16 HOW SUPPLIED/STORAGE AND HANDLING

Serious Drug Interactions

Advise patients they should not take tizanidine if they are taking fluvoxamine or ciprofloxacin because of the increased risk of serious adverse reactions including

severe lowering of blood pressure and sedation. Instruct patients to inform their physicians or pharmacists when they start or stop taking any medication because of the risks associated with interaction between tizanidine and other medicines [see Contraindications (4) and Drug Interactions (7)].

Tizanidine Dosing and Administration

Tell patients to take tizanidine exactly as prescribed (consistently either with or without food) and not to switch between tablets and capsules [see Dosage and Administration (2)]. Inform patients that they should not take more tizanidine than prescribed because of the risk of adverse events at single doses greater than 8 mg or total daily doses greater than 36 mg. Tell patients that they should not suddenly discontinue tizanidine, because rebound hypertension and tachycardia may occur [see Warnings and Precautions (5.6)].

Hypotension

Warn patients that they may experience hypotension and to be careful when changing from a lying or sitting to a standing position [see Warnings and Precautions (5.1)].

Sedation

Tell patients that tizanidine may cause them to become sedated or somnolent and they should be careful when performing activities that require alertness, such as driving a vehicle or operating machinery [see Warnings and Precautions (5.3)]. Tell patients that the sedation may be additive when tizanidine is taken in conjunction with drugs (baclofen, benzodiazepines) or substances (e.g., alcohol) that act as CNS depressants. Remind patients that if they depend on their spasticity to sustain posture and balance in locomotion, or whenever spasticity is utilized to obtain increased function, that tizanidine decreases spasticity and caution should be used.

Hypersensitivity Reactions

Inform patients of the signs and symptoms of severe allergic reactions and instruct them to discontinue tizanidine and seek immediate medical care should these signs and symptoms occur [see Warnings and Precautions (5.5)].

Distributed by:

Trifluent Pharma, LLC
San Antonio, TX 78213

Rev. 01, 02/2026