



LASTING EXPRESSIONS

# PRODUCT CATALOGUE

1. JANUARY 2025



60Y SIXTY-YEAR WARRANTY

💡 CREATIVE POSSIBILITIES

🌱 ECO-FRIENDLY



## Our range of surfaces create expressions for future generations

Steni delivers the widest and most exciting array of solutions: combining multiple formatting opportunities for the facade industry. Delivering more than 50 million m2 of facades and 60 years in business, we stand as a reputable manufacturer of cost-effective facade solutions with lasting aesthetics. That is why we offer a 60-year functional warranty.

Steni works closely with building owners, architects and contractors to ensure long-term relationships. By combining experience with knowledge, innovation and enthusiasm – and by providing good BIM tools, our goal is that you, our customers, will experience increased value beyond the product itself. Our customers should expect quick and easy service, good logistics solutions and strong customer service.

At Steni we believe enduring aesthetics, quality and the environment are the keys to a good future. To verify this we have third-party verification and certificates to support our claims. We work hard to minimize waste, reduce CO2 emissions and ensure that the life cycle costs of the buildings are kept low.

## PRODUCT ADVANTAGES

- |   |  |
|---|--|
|  60-year functional warranty |  Durable                                      |
|  Pre-drilled and cut         |  Easy cleaning                                |
|  Impact resistant            |  Adviser competence                           |
|  Withstands frost and water  |  Range of surfaces, gloss levels and textures |
|  Wide range of colours       |  Reduced on site material waste               |
|  Eco-friendly                |  Easy to remove graffiti                      |
|  Easy installation           |  |

# CONTENTS

6  
STENI  
COLOUR



22  
TERRA BY  
STENI



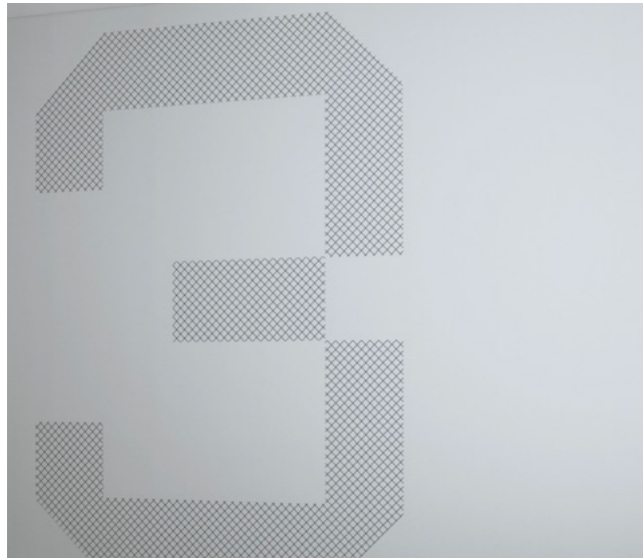
18  
STENI  
NATURE



19  
STENI  
NATURE  
GLAS



12  
STENI  
VISION



17  
GLOSS  
LEVELS



27  
FORMATS  
AND DRILLING

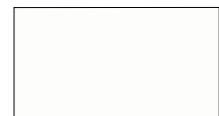


Values	3
Steni Colour	6
Steni Colour Plank	7
Steni Colour Reuse	10
Steni Vision	12
Gloss levels	17
Steni Nature	18
Steni Nature glass	19
Steni Protego	20
Terra by Steni	22
Original accessories	23
Formats and drilling	26
Steni Colour og Vision designelementer	28
Steni Nature designelementer	29
Handling utilities	30
Steni around the world	31

# STENI COLOUR 60<sup>Y</sup>

With Steni Colour façade panels you can play with colours, colour combinations and surfaces to give your building a perfect appearance.

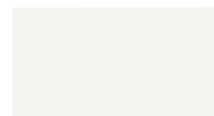
## STOCKED COLOURS OF STENI



**SN 8001**  
NCS S 0500-N  
Stocked: M-HM-HG



**SN 8010**  
NCS S 0502-Y  
Stocked: M-HM



**SN 8002**  
NCS S 1000-N  
Stocked: M-HM



**SN 8003**  
NCS S 2000-N  
Stocked: M



**SN 8020**  
NCS S 3000-N  
Stocked: M



**SN 8008**  
NCS S 8000-N  
Stocked: M-HM



**SN 8900**  
NCS S 9000-N  
Stocked: M-HM

**Standard Stock Format: 1195 x 2995 mm**

**Gloss levels:**

M - Matt  
HM - Half Matt  
HG - High Gloss  
See more about gloss levels page 17.

## STENI STANDARD FASTENERS (ACID-RESISTANT A4)

Product	Dimensions	No. per pack
Wood screw*	4.8 x 28/33 mm	500 pcs
Metal screw (self-drilling)	4.8 x 25 mm	500 pcs

We estimate 15 screws per m<sup>2</sup>. The formula for calculation is: number of m<sup>2</sup> x 15 / 500 (one pack contains 500 screws).  
The screws are supplied with a pan head and a T20 head (see page 23 for a complete overview).  
\* Stocked with untreated heads, and with painted heads in stock panel colours.

Steni Colour is easy to maintain, quick to install, with minimal waste. The panels are environmentally friendly, and thanks to the warranty of 60 years the total life-cycle cost is the lowest in their class.

Steni Colour is a fibreglass-reinforced stone composite panel suitable for cladding on all types of buildings. The panels should be installed in accordance with our installation instructions. Steni Colour is available in a wide range of standard colours and formats, and in three gloss levels, you will always be able to find a variant that is perfect for your project.

### HIGH FIRE CLASS

Steni Colour has B-s1, d0 fire classification  
[ref our technical datasheet]

## STENI COLOUR

With Steni Colour, you can choose from 80 standard colors and three gloss levels.

· Choose Steni Colour in the standard size of 1195x2995 mm if you plan to cut/drill the façade panels on-site.

· Choose for customized lengths and widths, as well as pre-drilled panels, to minimize waste and time at the construction site.

We offer all widths between 196 mm and 1195 mm, and all lengths between 850 mm and 3495 mm. The maximum size is 1195x3495 mm.

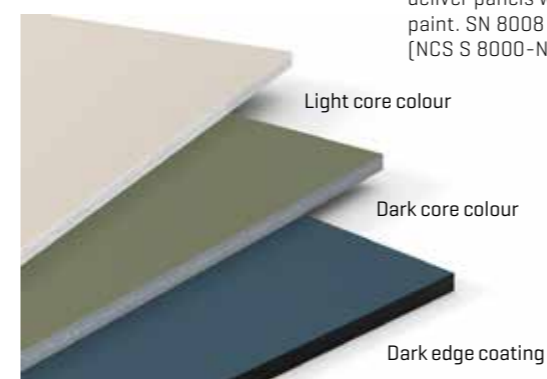
The full production width of 1195 mm is always charged.

For a complete overview of size options, see the table on page 26.



## COLOUR CORE

Steni Colour is supplied with coloured light or dark core colour. In addition, we do have the opportunity to deliver panels with edge paint. SN 8008 [NCS S 8000-N].



## STENI COLOUR PLANK (FS200)

- Minimum quantity: 50 m<sup>2</sup>.
- 80 standard colours available.
- Steni Colour Plank is available with a light or dark through-coloured core.
- If desired, Steni Colour Plank can be ordered with edge coating in the same colour as the surface color; in this case, the plank is produced with a light core.
- Steni Colour Plank is pre-drilled at the factory (adapted for vertical battens with 600 mm spacing).

Note: Since the planks overlap, you will need approximately 1.15 m<sup>2</sup> of Steni Colour Plank per m<sup>2</sup> of wall surface.

Dimensions (Height x Length), including pre-drilling

- 196 x 1795 mm
- 196 x 2395 mm
- 196 x 2995 mm



## ABOUT COLOUR CODES

All standard surfaces have a unique Steni code beginning with SN, e.g. SN 8010 [Colour], SN 100 [Nature]. In addition we give NCS colour codes for Steni Colour to make it easier for you to match the colour with other products.

## COLOUR PRECISION

We check the colour of Steni Colour using a spectrophotometer, which measures colour differences in accordance with the measuring methods specified in CIE 15:2004.  
The permitted variance within the same batch is  $\Delta E = 0.5$   
The permitted variance between different batches is  $\Delta E = 3.0$

## CAN'T FIND THE COLOUR YOU'RE LOOKING FOR?

We mix all of the colours for Steni Colour ourselves in the factory. This enables us to offer special colours within the NCS and RAL colour systems. We now have over 2,200 approved colours in our archive, so please contact us if you want a colour that is not in our standard range. Unused paint degrades over time, so all colours, whether standard or special colours, are mixed to order.

Even though our processes are high-precision, there may be small variations between mixes. You may wish to bear this in mind if your project is being planned with partial deliveries. Note that we are unable to offer exact colour matches between multiple production runs.



Find out more about why Steni is good for the environment.



Installation instructions: Scan the QR code or visit steni.com



Take a good look at our extensive range of surfaces.

STANDARD COLOURS STENI COLOUR


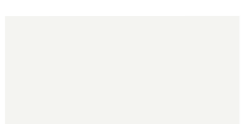



BASE COLOUR

 <b>SN 8010</b> NCS S 0502-Y Stocked: M-HM	 <b>SN 9500</b> NCS S 1002-Y	 <b>SN 9205</b> NCS S 1502-Y	 <b>SN 9501</b> NCS S 2002-G50Y	 <b>SN 8671</b> NCS S 3502-Y
 <b>SN 8011</b> NCS S 1005-Y20R	 <b>SN 8013</b> NCS S 1002-G50Y	 <b>SN 9505</b> NCS S 1604-Y22R	 <b>SN 8661</b> NCS S 3502-G	 <b>SN 9506</b> NCS S 3010-G90Y
 <b>SN 4072</b> NCS S 2010-Y10R	 <b>SN 3413</b> NCS S 1020-Y10R	 <b>SN 9512</b> NCS S 2020-Y10R	 <b>SN 9513</b> NCS S 2030-Y10R	 <b>SN 9514</b> NCS S 2020-Y20R
 <b>SN 9520</b> NCS S 2005-Y20R	 <b>SN 9521</b> NCS S 1704-Y50R	 <b>SN 9522</b> NCS S 1505-Y30R	 <b>SN 4012</b> NCS S 2010-Y30R	 <b>SN 4500</b> NCS S 2020-Y40R
 <b>SN 9527</b> NCS S 2503-Y80R	 <b>SN 9528</b> NCS S 2509-Y77R	 <b>SN 9507</b> NCS S 3010-Y70R	 <b>SN 9529</b> NCS S 3208-Y77R	 <b>SN 9530</b> NCS S 4010-Y70R
 <b>SN 9536</b> NCS S 2005-G60Y	 <b>SN 9308</b> NCS S 2010-G30Y	 <b>SN 9537</b> NCS S 3010-G50Y	 <b>SN 6362</b> NCS S 4010-G50Y	 <b>SN 9307</b> NCS S 5010-G30Y

SIGNAL COLOURS

 <b>SN 9103*</b> NCS S 7020-R	 <b>SN 9100*</b> NCS S 1580-Y90R	 <b>SN 9101*</b> NCS S 2070-Y60R	 <b>SN 9102*</b> NCS S 0876-Y44R	 <b>SN 9519*</b> NCS S 3040-Y20R
---	---	---	--	---





NEUTRAL GREYSCALE

 <b>SN 8001</b> NCS S 0500-N Stocked: M-HM-HG	 <b>SN 8002</b> NCS S 1000-N Stocked: M-HM	 <b>SN 8003</b> NCS S 2000-N Stocked: M	 <b>SN 8020</b> NCS S 3000-N Stocked: M	 <b>SN 8004</b> NCS S 4000-N
--	--	---	--	---





BASE COLOUR

 <b>SN 8672</b> NCS S 4502-Y	 <b>SN 8673</b> NCS S 5502-Y	 <b>SN 9502</b> NCS S 7502-Y	 <b>SN 9503</b> NCS S 7502-B	 <b>SN 9504</b> NCS S 8005-R20B
 <b>SN 4353</b> NCS S 3010-Y50R	 <b>SN 9508</b> NCS S 4005-Y20R	 <b>SN 9509</b> NCS S 4005-G80Y	 <b>SN 9510</b> NCS S 4010-Y10R	 <b>SN 9511</b> NCS S 4005-Y50R
 <b>SN 9515</b> NCS S 3020-Y20R	 <b>SN 9516</b> NCS S 4020-Y20R	 <b>SN 9517</b> NCS S 2030-Y20R	 <b>SN 9518</b> NCS S 3030-Y30R	 <b>SN 9523</b> NCS S 4020-Y40R
 <b>SN 4357</b> NCS S 3030-Y50R	 <b>SN 9524</b> NCS S 3917-Y66R	 <b>SN 9525</b> NCS S 4030-Y60R	 <b>SN 9526</b> NCS S 5020-Y50R	 <b>SN 9532</b> NCS S 5010-Y82R
 <b>SN 9531</b> NCS S 4020-Y80R	 <b>SN 9533</b> NCS S 5020-Y80R	 <b>SN 9534</b> NCS S 5030-Y80R	 <b>SN 2008</b> NCS S 4550-Y80R	 <b>SN 9535</b> NCS S 6020-Y80R
 <b>SN 9538</b> NCS S 5317-G40Y	 <b>SN 9539</b> NCS S 2703-B02G	 <b>SN 9540</b> NCS S 3605-R99B	 <b>SN 7020</b> NCS S 5010-R90B	 <b>SN 9541</b> NCS S 5217-R95B

SIGNAL COLOURS

 <b>SN 9200*</b> NCS S 1070-Y10R	 <b>SN 9302*</b> NCS S 0565-G50Y	 <b>SN 9300*</b> NCS S 1070-G30Y	 <b>SN 9304*</b> NCS S 5040-B30G	 <b>SN 9303*</b> NCS S 6530-B30G
---	---	---	---	---

NEUTRAL GREYSCALE

 <b>SN 8005</b> NCS S 5000-N	 <b>SN 8006</b> NCS S 6000-N	 <b>SN 8007</b> NCS S 7000-N	 <b>SN 8008</b> NCS S 8000-N Stocked: M-HM	 <b>SN 8900</b> NCS S 9000-N Stocked: M-HM
---	---	---	--	--

○ The samples indicated with a white dot have a light core colour as standard. ● The samples indicated with a dark dot have a dark core colour as standard.

\*Signal colours cannot be supplied in matt gloss [M]; only in half matt [HM] and high gloss [HG].  
Colours that have dark core colour as standard can also be delivered with a light core colour on request.  
Printed colours may deviate slightly from the actual colours. Please request a product sample.

# STENI COLOUR REUSE

The façade system designed for reuse



60<sup>Y</sup>

The Re Use of building materials is the current and future answer to several global environmental challenges. Steni Colour Reuse is a façade system designed to be used repeatedly.

Our façade panels are environmentally friendly and have an expected lifetime of more than 100 years which makes them a good choice for the environment and sustainability. Now we have taken the step further by launching Steni Colour Reuse, a set of standardised façade panels that systemise reuse.

These are façade panels that can be reused directly, when they have finished their service in a building. Steni Colour Reuse comes with a written 60-year functional warranty.

## STENI COLOUR REUSE PRODUCTION FORMATS [mm]

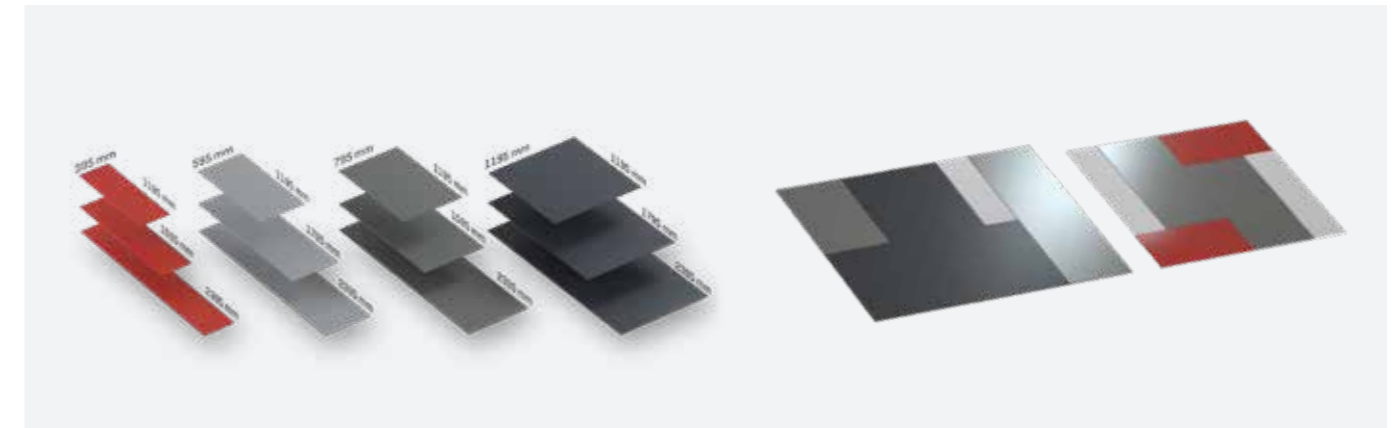
Minimum 10 m<sup>2</sup> per division.

Standard panel divisions*	Standard production length
395 + 395 + 395	1195 , 1595 , 2395
595 + 595	1195 , 1795 , 2395
795 + 395	1195 , 1595 , 2395
1195**	1195 , 1795 , 2395

\* All panels split from the same full-width panel must be of the same length.

\*\*No minimum quantity for 1195 mm width.

## PROPERTIES OF STENI COLOR REUSE



### SUSTAINABLE OPPORTUNITIES

A used Steni facade panel can be re-used as it is by adapting the boring on the new facade to the drill pattern on the used facade panel (standard c/c 400 mm or c/c 600 mm).

### ROOM FOR FLEXIBILITY AND CREATIVITY

Steni Colour Reuse comes in 12 different panel sizes corresponding to the mindset behind Lego<sup>®</sup>. The colour selection is the same as for Steni Colour, i.e. 80 standard colours, of which 70 can be supplied in three gloss levels; M, HM and HG and 10 can be supplied in two gloss levels; HM and HG.

### EASY TO ASSEMBLE AND DISASSEMBLE

Steni façade panels are robust and impact-resistant. They can be easily assembled, disassembled, and reassembled again - several times - without being broken in the processes.

### STANDARDIZED TO DRILL PATTERN

Steni Colour Reuse is available in 6 formats pre-drilled with standard drilling patterns adapted to c/c 400 mm and 6 formats pre-drilled with standard drilling patterns adapted to c/c 600 mm. The formats and drilling patterns are adapted for both horizontal and vertical mounting.

## FROM LINEAR TO CIRCULAR ECONOMY

At Steni we recognize the importance of contributing to a sustainable circular economy. One of our key features is durability and we want to send as little material as possible out of the cycle.

This is why, after reaching the end of one cycle, it is our goal that 100% of Steni Colour Reuse will be reused in either new projects or renovations.



Book a project meeting (follow the QR code).

# STENI VISION 60<sup>Y</sup>

Steni Vision panels are made of stone composite and can be used both internally and externally. When mounted according to our installation instructions.



## STANDARDPRINT STENI VISION

### STENI VISION - WOOD - ACACIA



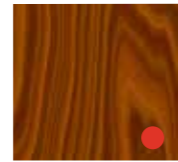
**Acacia Pale M**  
Scew colour: S 2010-Y10R  
Caulk colour: S 2010-Y10R\*



**Acacia Natural M**  
Scew colour: S 4550-Y30R  
Caulk colour: S 3040-Y30R\*



**Acacia Grey M**  
Scew colour: S 7000-N  
Caulk colour: S 7000-N\*

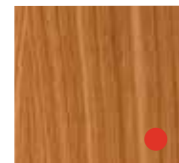


**Acacia Brown M**  
Scew colour: S 7020-Y40R  
Caulk colour: S 6020-Y50R\*

### STENI VISION - WOOD - OAK



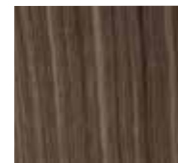
**Oak White M**  
Scew colour: S 3010-Y30R  
Caulk colour: S 3010-Y30R\*



**Oak Natural M**  
Scew colour: S 4550-Y30R  
Caulk colour: S 4550-Y30R\*



**Oak Dark M**  
Scew colour: S 5030-Y20R  
Caulk colour: S 5030-Y20R\*



**Oak Grey M**  
Scew colour: S 8000-N  
Fugefarge: S 8000-N\*

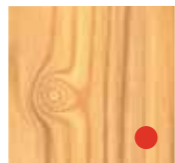
### STENI VISION - WOOD - PINE



**Pine Grey M**  
Scew colour: S 3000-N  
Caulk colour: S 3000-N\*



**Pine Brown M**  
Scew colour: S 4550-Y30R  
Caulk colour: S 4550-Y30R\*



**Pine Natural M**  
Scew colour: S 2040-Y20R  
Caulk colour: S 2040-Y20R\*



**Pine white M**  
Scew colour: S 2010-Y30R  
Caulk colour: S 2010-Y30R\*

### STENI VISION - WOOD - POPLAR



**Poplar Light M**  
Scew colour: S 4550-Y30R  
Caulk colour: S 4040-Y20R\*



**Poplar Grey M**  
Scew colour: S 3502-Y  
Caulk colour: S 3502-Y\*



**Poplar Brown M**  
Scew colour: S 6020-Y40R  
Caulk colour: S 6020-Y40R\*



**Poplar Dark M**  
Scew colour: S 8000-N  
Caulk colour: S 8000-N\*

## STENI VISION

Steni Vision Standard is available in 64 different designs. Each design comes with a predefined gloss level, with two additional gloss levels available upon request. Additionally, we can adjust color shades on our standard designs.

To minimize pattern repetition on the façade, we have developed multiple full-format files for each pattern.

We offer all widths between 196 mm and 1213 mm, and all lengths between 850 mm and 3190 mm. The full production width of 1195 mm is always charged. Maximum panel size is 1213 x 3190 mm.

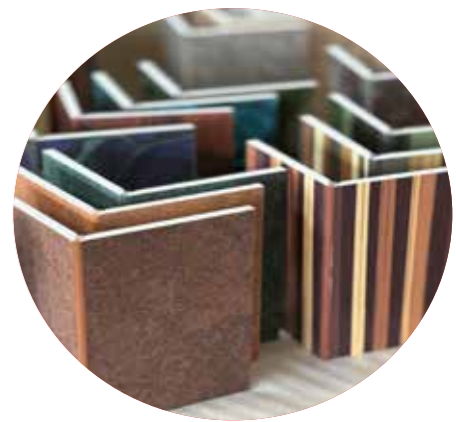
Panels are delivered with light-colored edges as standard, but dark edges are available for an additional cost.

Screw and joint colors are specified in NCS S [Second Edition] color codes, abbreviated as "S" followed by the color code.

For a complete overview of the available formats, see tables from page 27.

● The samples indicated with a red dot are available in both 17x24 cm and 10x15 cm. All other samples are available in 10x15 only.  
\*Caulk colour\* specifies the colour of the sealant in the corners of the L- and U-elements.

## STANDARDPRINT STENI VISION



### STENI VISION - METAL - ALUMINIUM



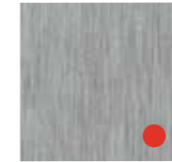
**Aluminium Brown HM**  
Scew colour: S 4550-Y30R  
Caulk colour: S 4040-Y30R\*



**Aluminium Gold HM**  
Scew colour: S 3030-Y  
Caulk colour: S 3030-Y\*

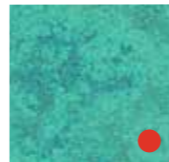


**Aluminium Aged HM**  
Scew colour: S 5020-690Y  
Caulk colour: S 5020-690Y\*



**Aluminium Natural HM**  
Scew colour: S 4000-N  
Caulk colour: S 4000-N\*

### STENI VISION - METAL - COPPER



**Copper Green M**  
Scew colour: S 4010-G10Y  
Caulk colour: S 3040-B90G\*



**Copper Aged M**  
Scew colour: S 7010-G30Y  
Caulk colour: S 7010-G30Y\*



**Copper Natural M**  
Scew colour: S 4550-Y30R  
Caulk colour: S 4030-Y30R\*



**Copper Brown M**  
Scew colour: S 6020-Y40R  
Caulk colour: S 6020-Y40R\*

### STENI VISION - METAL - CORTEN



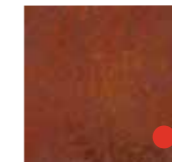
**Corten Light M**  
Scew colour: S 4550-Y30R  
Caulk colour: S 3030-Y30R\*



**Corten Yellow M**  
Scew colour: S 4550-Y30R  
Caulk colour: S 4050-Y30R\*



**Corten Orange M**  
Scew colour: S 2070-Y60R  
Caulk colour: S 4550-Y30R\*

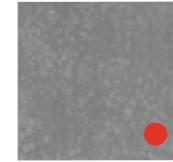


**Corten Rusty M**  
Scew colour: S 6030-Y70R  
Caulk colour: S 6030-Y70R\*

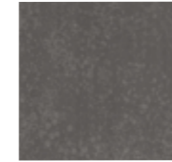
### STENI VISION - METAL - GALVANIZED STEEL



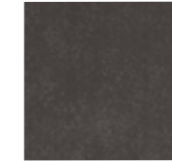
**Steel Light HM**  
Scew colour: S 4000-N  
Caulk colour: S 4000-N\*



**Steel Grey HM**  
Scew colour: S 4000-N  
Caulk colour: S 4000-N\*



**Steel Aged HM**  
Scew colour: S 7000-N  
Caulk colour: S 7000-N\*



**Steel Dark HM**  
Scew colour: S 8000-N  
Caulk colour: S 8000-N\*

### STENI VISION ELEMENT

All Steni Vision standard designs are also available in L- and U-elements. See page 28 for details.

### SAMPLES

All decors are made up of several shades of colours that will be perceived differently depending on the lighting conditions. Inspect the Steni Vision sample(s) outside in normal daylight.



Installation instructions:  
Scan the QR code or visit  
steni.com

## STANDARDPRINT STENI VISION

### STENI VISION - STONE - TRAVERTINE



**Travertine Dark M**  
Scew colour: S 7000-N  
Caulk colour: S 7000-N\*



**Travertine Beige M**  
Scew colour: S 3010-Y30R  
Caulk colour: S 4010-Y10R\*



**Travertine Light M**  
Scew colour: S 3010-Y30R  
Caulk colour: S 3010-Y30R\*



**Travertine Natural M**  
Scew colour: S 3010-Y30R  
Caulk colour: S 3010-Y30R\*

### STENI VISION - STONE - CHISELED MARBLE



**Marble White M**  
Scew colour: S 3000-N  
Caulk colour: S 3000-N\*



**Marble Grey M**  
Scew colour: S 4000-N  
Caulk colour: S 4005-650Y\*



**Marble Beige M**  
Scew colour: S 3010-Y30R  
Caulk colour: S 3010-Y30R\*



**Marble Dark M**  
Scew colour: S 6005-Y20R  
Caulk colour: S 6005-Y20R\*

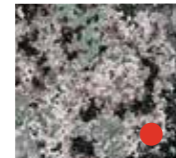
### STENI VISION - STONE - GRANITE



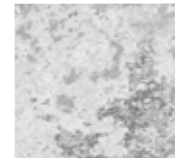
**Granite Dark HM**  
Scew colour: S 6005-Y20R  
Caulk colour: S 6005-Y20R\*



**Granite Beige HM**  
Scew colour: S 3010-Y30R  
Caulk colour: S 3010-Y30R\*



**Granite Mix HM**  
Scew colour: S 8000-N  
Caulk colour: S 8000-N\*



**Granite Light HM**  
Scew colour: S 2000-N  
Caulk colour: S 2000-N\*

### STENI VISION - STONE - CONCRETE



**Concrete Light M**  
Scew colour: S 2000-N  
Caulk colour: S 2000-N\*



**Concrete Grey M**  
Scew colour: S 4000-N  
Caulk colour: S 4000-N\*



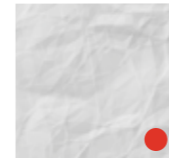
**Concrete Brown M**  
Scew colour: S 6010-Y10R  
Caulk colour: S 6010-Y10R\*



**Concrete Green M**  
Scew colour: S 7010-670Y  
Caulk colour: S 7010-670Y\*

## STANDARDPRINT STENI VISION

### STENI VISION - VARIETY - CURLED PAPER



**Curled Light M**  
Scew colour: S 2005-B20G  
Caulk colour: S 2005-B20G\*



**Curled Grey M**  
Scew colour: S 5010-690Y  
Caulk colour: S 5010-690Y\*



**Curled Dark M**  
Scew colour: S 7000-N  
Caulk colour: S 7000-N\*



**Curled Brown M**  
Scew colour: S 4550-Y30R  
Caulk colour: S 5030-Y30R\*

### STENI VISION - VARIETY - LAYERS



**Layers Green M**  
Scew colour: S 8000-N  
Caulk colour: S 8000-N\*



**Layers Blue M**  
Scew colour: S 8000-N  
Caulk colour: S 8000-N\*



**Layers Rusty M**  
Scew colour: S 6020-Y80R  
Caulk colour: S 6020-Y80R\*



**Layers Purple M**  
Scew colour: S 8000-N  
Caulk colour: S 8000-N\*

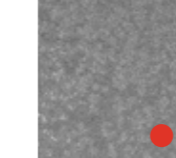
### STENI VISION - VARIETY - SPARKLE



**Sparkle Dark HM**  
Scew colour: S 8000-N  
Caulk colour: S 8000-N\*



**Sparkle Blue HM**  
Scew colour: S 7010-B10G  
Caulk colour: S 7010-B10G

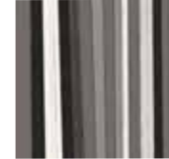


**Sparkle Grey HM**  
Scew colour: S 6000-N  
Caulk colour: S 6000-N\*



**Sparkle Beige HM**  
Scew colour: S 6020-Y40R  
Caulk colour: S 6020-Y40R\*

### STENI VISION - VARIETY - ZEBRANO



**Zebrano Grey HM**  
Scew colour: S 8000-N  
Caulk colour: S 8000-N\*



**Zebrano Brown HM**  
Scew colour: S 4550-Y30R  
Caulk colour: S 6020-Y80R\*



**Zebrano Natural HM**  
Scew colour: S 8008-N  
Caulk colour: S 8008-N\*



**Zebrano Green HM**  
Scew colour: S 8008-N  
Caulk colour: S 8008-N\*

Steni Vision is easy to maintain and quick to install, with minimal waste. The panels are environmentally friendly, and thanks to the lifetime warranty of 60 years the total life cost is the lowest in their class.

We have the opportunity to change colours on all standard Vision patterns at an additional cost.

### STENI STANDARD FESTEMIDLER [syrefast A4]

Product	Dimensions	No. per pack
Wood screw*	4,8 x 28/33 mm	500 pcs.
Metal screw [self-drilling]	4,8 x 25 mm	500 pcs.

\*Stocked with untreated heads.  
The screws are supplied with a pan head and a T20 head [see page 23 for a complete overview].



Take a deep dive into our ocean of surfaces. Use the QR code or see [steni.com](http://steni.com)



The digital print technology that we use in the production of Steni Vision enables you as the customer to create a completely unique effect for your façade.

We work closely with skilled graphic designers who can help you to realise your idea. Our partners can help you with everything from the initial concept to the finished, print-ready files. As is normal in the field of graphic design and printing, the printing technology is based on the CMYK colour system.

Visit our website to find out more about how to plan and realise your Vision project. Our experts will help you to achieve a brilliant result!

## STENI VISION GIVES YOU OPPORTUNITIES



**INTEGRATION**  
BLEND IN OR STAND OUT

Adapt your building to its surroundings, or give it a completely different look.



**INFORMATION**  
CLEAR MESSAGES

Clear information helps people to decide. Make it clear: who, what, where and why.



**IDENTITY**  
A PERSONAL TOUCH

Accentuate your building – give it a unique personality



**ILLUSION**  
AESTHETIC TRICKS

Things aren't always what they seem. Optical illusions provide a powerful way in which to highlight architectural expressions.

Steni Vision is easy to maintain and quick to install, with minimal waste. The panels are environmentally friendly, and thanks to the lifetime warranty of 60 years the total life-cycle cost is the lowest in their class.

### WANT A PARTICULAR PATTERN?

Specific formats and requirements apply. Get in touch with your local sales rep for more information and assistance.

### ONE WALL = ONE DESIGN

A single image can be divided up to cover all or part of the façade!

### DIGITAL PRINTING

Steni Vision has a surface that is produced using digital printing technology. This gives you, as a designer, a unique opportunity to create an individual look in an easy, modern manner.



See also our brochure: Designs & Patterns

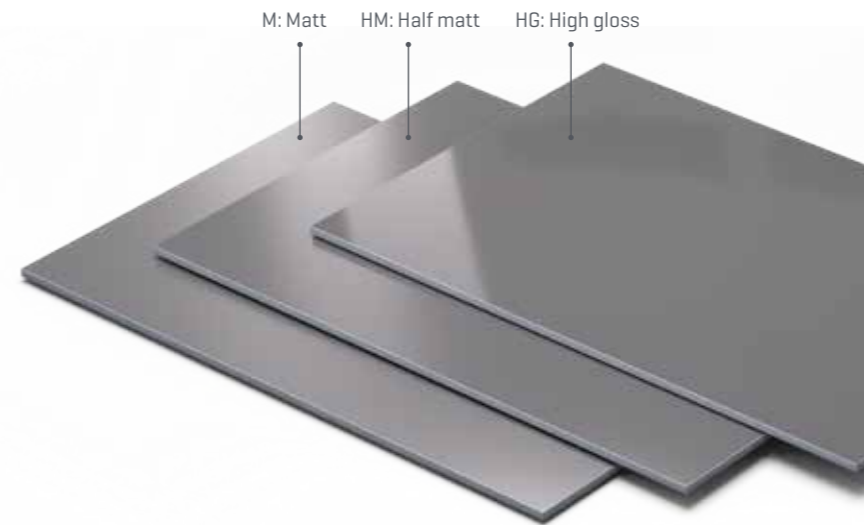


Be inspired! Download our façade brochure here or from steni.com

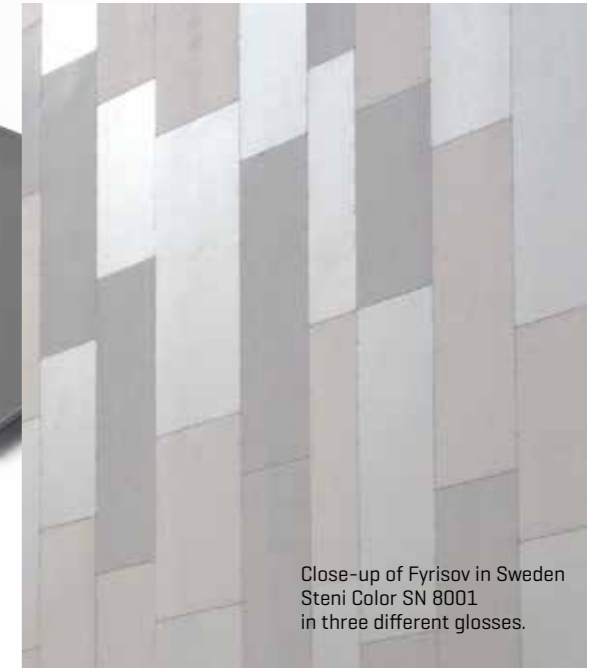
# GLOSS LEVELS

With our gloss levels, you can use the light to expand the colour palette and let nature create new effects every day.

STENI COLOUR AND VISION ARE AVAILABLE IN THREE DIFFERENT GLOSS LEVELS



Matt (M) is equivalent to gloss levels 1-4.  
Half matt (HM) is equivalent to gloss levels 6-20  
High gloss (HG) is equivalent to gloss levels 60-75.



Close-up of Fyrisov in Sweden Steni Color SN 8001 in three different glosses.



Fyrisov in Sweden Steni Colour in three gloss variations..

# STENI NATURE 60<sup>Y</sup>

A strong and natural façade panel with a surface of crushed natural stone.

## STENI NATURE STOCKED COLOURS



WHISPER WHITE/SN 100  
[WHITE]  
Screw colour - S 1002-G50Y M  
Stocked: F, M



CARBON/SN 305 (CARBON)  
Screw colour - S 8000-N M  
Standard: M  
Stocked: M



URBAN GREY/SN 117  
[PEARL GREY]  
Screw colour - S 4000-N M  
Stocked: F, M

Steni Nature stocked formats:  
1,195 × 2,995 mm.  
Full production width of 1195 mm is always charged.

## STENI STANDARD FASTENERS (acid-resistant A4)

Product	Dimensions	No. per pack
Wood screw*	4.8 × 28/33 mm	500 pcs
Metal screw (self-drilling)	4.8 × 25 mm	500 pcs

We estimate 15 screws per m<sup>2</sup>. The formula for calculation is: number of m<sup>2</sup> × 15 / 500 [one pack contains 500 screws].  
The screws are supplied with a pan, T20 head [see page 23 for a complete overview].  
\* Stocked with untreated heads, and with painted heads in stock panel colours.

### BATCHES

Colour differences may occur between different production so consider this when you order panels.

### HIGH FIRE CLASS

Steni Nature Coarse has A2-s1.d0 fire classification [ref our technical datasheet].

Steni Nature is easy to maintain and quick to install, with minimal waste. The panels are environmentally friendly, and thanks to their expected lifetime of over 60 years the total life-cycle cost is the lowest in their class.

Steni Nature is a fibreglass-reinforced stone composite panel suitable for use as external cladding on all types of buildings. The panels should be installed in accordance with our installation instructions.

Steni Nature is available in a multitude of surfaces, stone grades and formats. The panels blend in with the natural environment, making the timeless design an excellent alternative to plaster or brick.



See how easy it is to remove graffiti from STENI Nature.



Find out more about Nature: Scan the QR code or visit steni.com



See our reference projects. Scan the QR code or visit steni.com

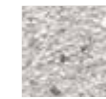
## STENI NATURE – STANDARD COLOURS



WHISPER WHITE/SN 100 (HVI)  
Screw colour: S 1002-G50Y M  
Stocked: F, M  
Standard: F, M, C



SIENNA/SN 140 (GIALLO SIENNA)  
Screw colour: S 2010-Y30R M  
Standard: F, M, C



SECRET BLEND/SN 20  
Screw colour: S 0502-Y M  
Standard: F



NORDIC LIGHT/SN 106 (BOTICINO)  
Screw colour: S 2010-Y30R M  
Standard: F, M



DUSTY RED MIX/SN 190 (FINNISH RED)  
Screw colour: S 5040-Y70R M  
Standard: FM, M



EXTRA WHITE/SN 500  
Screw colour: S 1002-G50Y M  
Standard: F



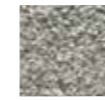
NORDIC SAND/SN 111 (SANDGRÅ)  
Screw colour: S 4502-Y M  
Standard: M



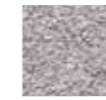
CARBON/SN 305 (CARBON)  
Stocked: M  
Screw colour: S 8000-N M  
Standard: FM, M



SCANDINAVIAN FOREST/SN 502  
Screw colour: S 5010-G30Y M  
Standard: M



URBAN GREY/SN 117 (PERLEGRÅ)  
Screw colour: S 4000-N M  
Stocked: F, M  
Standard: F, M, C



GRANITE/SN 315 (GRANIT)  
Screw colour: S 4502-Y M  
Standard: F



ICE AGE/SN 503  
Screw colour: S 4550-Y30R M  
Standard: C



HYDRO/SN 130 (VERDE ALPI)  
Screw colour: S 4502-Y M  
Standard: M



WHITE LINEN/SN 320 (ANTICO)  
Screw colour: S 1002-G50Y M  
Standard: M

## STENI NATURE GLASS

A strong and natural façade panel with a surface of recycled glass.



WHITE GLASS/SN 604  
[NATURE GLASS]  
Screw colour: S 0500-N M  
Standard: F, M



MIXED GLASS/SN 605  
[NATURE GLASS]  
Screw colour: S 1005-Y20R M  
Standard: F, M



FM: Fine Micro [1,2-1,8mm]  
Thickness: 5.5 ± 0.6 mm



F: Fine [1-3 mm]  
Thickness: 6.5 ± 0.6 mm



M: Medium [3-5 mm]  
Thickness: 8.0 ± 0.6 mm



C: Coarse [5-8 mm]  
Thickness: 14.0 ± 0.6 mm

Images are not 1:1 scale

### CAN'T FIND WHAT YOU'RE LOOKING FOR?

Steni Nature can be ordered with special stone or in a special grade. In that case, our laboratory must approve the type of stone in advance and ensure that the grade chosen is suitable for production. This will result in a unique production run that will give your façade the unique and robust look that you want. Our standards of quality and precision are just as stringent for special orders as they are for our standard colours, but we cannot guarantee that the same type of stone will be available in the future. Please take this into consideration when calculating the size of your order.

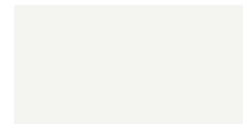
# STENI PROTEGO

Protego is a robust and weather-resistant roof panel. The roof panel is made of stone composite and is supplied with a smooth or rough surface.

- 40-year functional warranty and > 60-year expected product life.
- Frost resistant.
- Low weight, quick installation, the roof plate can be walked on.
- Suitable for adaptation to integrated "invisible" solar cells.



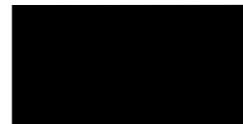
**STANDARD SURFACES** ○ The samples indicated with a white dot have a light core colour as standard. ● The samples indicated with a gray dot have a dark core colour as standard.



**SN 8002 HM**  
NCS S 1000-N



**SN 8008 HM**  
NCS S 8000-N



**SN 8900 M-HM**  
NCS S 9000-N



**SN 305 SAND**  
NCS S 9000-N

Other colours and surfaces can be project customized.

## FORMAT

595 x 595 (The number of panels must be divisible by 4).  
1195 x 1195

For straight or diagonal mounting.

## SOLAR CELLS

- Adapted to the format for integrated solar cells
- Roof tiles that are adapted to solar cells are normally coloured.
- Steni Protego roof tiles and solar cells can be installed continuously side by side in the same installation process.

Feel free to contact us for further information.

## DRILLING

Steni protego roof panels come pre-drilled.

## ACCESSORIES

Protego Wood Screw A2 w/washer, 4,8x50 mm  
Screws are supplied in the same colour as the panels.  
Sold in boxes of 250 pieces.



Protego Ribbed shank copper nail, 2,8x40 mm.  
Sold in boxes of 1000 pieces.



# terra by STENI® 25<sup>Y</sup>

A robust and natural foundation panel with a surface of crushed natural stone.

## STANDARD SURFACES IN STOCK



SN 100 – White  
Screw colour:  
S 1002-G50Y M



SN 201 – Grey  
Screw colour:  
S 4000-N M



SN 305 – Black  
Screw colour:  
S 8000-N M

## STANDARD INVENTORY FORMATS [mm]

TERRA by Steni is supplied undrilled.

Panel Width	Panel length	No. per pallet	No m <sup>2</sup> per pallet
1195	2395	48	137
595	2395	96	137
595*	1195	140	90,5

\*595x1195 not stocked in SN 100

## STENI STANDARD FASTENERS [acid-resistant A4]

Product	Dimensions	No. per pack
Wood screw powder-coated M	4.0 × 28 mm	200

The screws are supplied with a pan, R1 square head, painted grey, white or black. For installation, calculate approximately 16 screws per m<sup>2</sup>. Stocked with painted heads in stocked panel colours.

## BATCHES

Colour differences may occur between different production so consider this when you order panels.

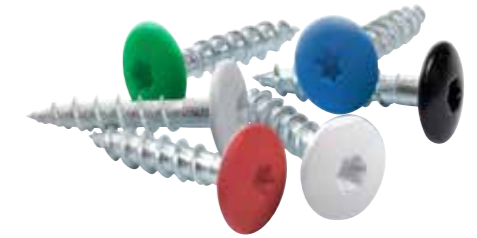
# ORIGINAL ACCESSORIES

Our products are fully tested, so you can be sure that all of the components will work together, the installation will go smoothly, and the desired result will be achieved.

## STENI STANDARD WOOD SCREWS [ACID-RESISTANT A4, PAN HEAD, TORX 20]

Product	Stock	Dimensions	No. per pack
Plain, untreated	X	4.8 × 28 mm	500 pcs
Painted high gloss	X	4.8 × 28 mm	500 pcs
Painted matt	X	4.8 × 28 mm	500 pcs
Painted matt	X	4.0 × 28 mm	200 pcs*
Plain, untreated	X	4.8 × 33 mm	500 pcs
Painted high gloss	X	4.8 × 33 mm	500 pcs
Painted matt	X	4.8 × 33 mm	500 pcs

\* Screws for Terra by STENI are supplied in packs of 200.



New and better screws! Now with even better traction!



Screws for TERRA by STENI

## STENI SELF-DRILLING SCREW [RTB] FOR STEEL AND ALUMINIUM [ACID-RESISTANT A4, PAN HEAD, TORX 20]

Product	Dimensions	No. per pack
Plain, untreated	4.8 × 25 mm	500 pcs
Painted high gloss	4.8 × 25 mm	500 pcs
Painted matt	4.8 × 25 mm	500 pcs

## SCREWS

Screws for wooden substructure are stocked in colours matching stocked panels. The colours of screws may deviate from the colours of panels

## CAN'T FIND WHAT YOU'RE LOOKING FOR?

All Steni screws are available with painted heads. The colour charts show the recommended screw colours for all standard products. Painted screws are stocked for all stocked panel variants. We can also supply painted screws to match most NCS and RAL colour codes. Our joint and corner profiles are also available painted black, white or natural [anodised] aluminium. Other colours are also available on request.

Terra by STENI is a fibreglass-reinforced stone composite panel suitable for use as external facing on foundation walls.



Find out more about Terra: Scan the QR code or visit [steni.com](http://steni.com)

Terra by STENI is available in three colours.



See our reference projects. Scan the QR code or visit [steni.com](http://steni.com)

Terra by STENI is very easy to cut and install, enabling you to refresh old foundation walls with a maintenance-free surface that will last for years.



See how easy it is to install Terra by STENI. Download the video here.

## STENI EPDM

Product	Dimensions	Colour (NCS code)
EPDM, rubber polymer	70 mm × 25 m per roll	Black [S 9000-N]
EPDM, rubber polymer	70 mm × 25 m per roll	Grey [S 6000-N]
EPDM, rubber polymer	70 mm × 25 m per roll	White [S 1005-Y20R]
EPDM, rubber polymer	95 mm × 25 m per roll	Black [S 9000-N]
EPDM, rubber polymer	95 mm × 25 m per roll	Grey [S 6000-N]
EPDM, rubber polymer	95 mm × 25 m per roll	White [S 1005-Y20R]
EPDM, rubber polymer	120 mm × 25 m per roll	Black [S 9000-N]
EPDM, rubber polymer	120 mm × 25 m per roll	Grey [S 6000-N]
EPDM, rubber polymer	120 mm × 25 m per roll	White [S 1005-Y20R]

## TOUCH-UP PEN

Product	Colour	Quantity,pr package
Uni Paint PX 30	Dark Colour	1 piece. [covers about 100 m panel edge].

This is a marker pen used for edge coating of panels cut on-site. Follow the procedure for using the edge coating pen [see our website]. No warranty or claim for the quality of the result after using the pen.

## STENI BITS, SAW BLADES AND CUTTING DISCS

Product	Dimensions	No. per pack
Steni Multiconstruction drill bit Steni Terra	Ø5,5 × 85 mm	1 pc
Steni Multiconstruction drill bit, Steni Colour/Vision/Nature	Ø6,5 × 100 mm	1 pc
Steni Jigsaw blade T-tang	100 mm	1 pc
Cutting disc for Steni	Ø150 × 2,6 × 30 mm	1 pc
30 mm bushing	Ø30/25,4 × 2,6 mm	1 pc
30 mm bushing	Ø30/22,2 × 2,6 mm	1 pc
30 mm bushing	Ø30/20,0 × 2,6 mm	1 pc

## STENI TOOLBOX

Product	Dimensions	No. per pack
Steni toolbox with accessories	360x440x250 mm	1 pc
Cutting disc for Steni	Ø150 × 2,6 × 30 mm	1 pc
Steni Multiconstruction drill bit, Steni Colour/Vision/Nature	Ø6,5 × 100 mm	1 pc
Steni Jigsaw blade T-tang	100 mm	1 pc
UniPaint PX-30	Dark Colour	1 piece. [covers about 100 m panel edge].
Steni Facade cleaner		1 pc
Microfiber Cloth	40 x 40 cm	1 pc
Spacer Block	5 mm	1 pc



## STENI ALUMINIUM CORNER AND JOINT PROFILES

PRODUCT	INTENDED USE (MM)	COLOUR	LENGTH (M)
Horizontal Joint profile: HFP 7-30	Steni façade panels (single panel thickness)	Natural (anodised) 15µ	3,0
		White (RAL 9010)	3,0
		Black (RAL 9005)	3,0
Horizontal Joint profile: HP 8-30	Steni Colour/Vision/Nature FM/F (single panel thickness)	Natural (anodised) 15µ	3,0
		White (RAL 9010)	3,0
		Black (RAL 9005)	3,0
Horizontal Joint profile: HP 12-30	Steni Nature M (single panel thickness)	Natural (anodised) 15µ	3,0
		White (RAL 9010)	3,0
		Black (RAL 9005)	3,0
Horizontal Joint profile: FP 6-30	Steni façade panels (single panel thickness)	Natural (anodised) 15µ	3,0
		White (RAL 9010)	3,0
		Black (RAL 9005)	3,0
Vertical profile external corner: CP 15-13	Steni façade panels (single panel thickness)	Natural (anodised) 15µ	3,0
		White (RAL 9010)	3,0
		Black (RAL 9005)	3,0
Vertical profile external corner: CP 15-18-33	Steni façade panels (single panel thickness)	Natural (anodised) 15µ	3,0
		White (RAL 9010)	3,0
		Black (RAL 9005)	3,0
Vertical profile external corner: CP 15-25-40	Steni façade panels (double panel thickness)	Natural (anodised) 15µ	3,0
		White (RAL 9010)	3,0
		Black (RAL 9005)	3,0

Can be painted in other colours upon request.



### DO YOU WANT TO ADHERE YOUR FACADE WITH ADHESIVE?

Our partners have tested and approved adhesive systems adapted to our Steni Colour facade panel. The products must be purchased directly from the distributors. Installation instructions for approved adhesive systems can be downloaded by scanning the QR code on the right side.



Installation instructions: Scan the QR code or visit steni.com

# FORMATS AND DRILLING

## ABOUT THE FORMAT TABLES

The panels are produced as a continuous sheet that is initially cut into lengths of 850–3,495 mm. These full-width panels are then divided in accordance with the widths stated in the format tables. Therefore, each full-width panel can only be divided into smaller panels of the same length. [see diagram].

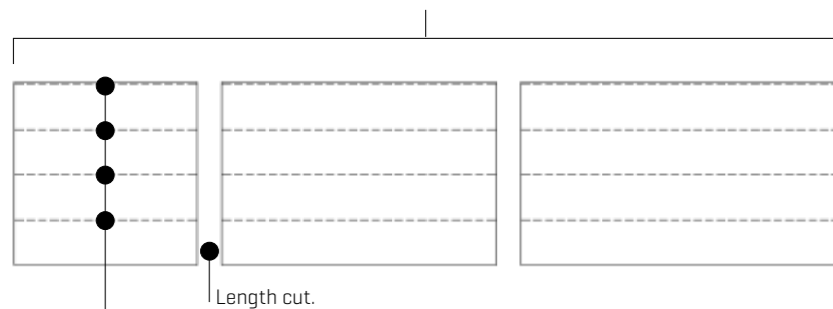
Smaller formats under 196x850 can be ordered on request and are usually delivered in full width, which must be adjusted on-site. These panels come with a drawing showing how they should be cut with minimal waste.

An optimal production requires that the number of split panels always adds up to the full-width panel produced. Unfortunately, in some cases parts of the full-width panel cannot be used. There are three things in particular that will affect this.

- Choice of width format
- Variation in length format
- Splitting up the order



Steni is committed to supplying sustainable solutions that make better use of our resources and reduce the strain on the environment. By discussing your project with us at an early stage, you as a customer can help us in this important work and also help to reduce your project costs.



Splitting full-width panel (here 4 × 295 mm): see the panel division column in the tables below for possible configurations. All panels split from the same full-width panel will always be of the same length.

## PRODUCTION FORMATS STENI COLOUR

Steni Colour Standard and Stocked Format: 1195 x 2995 mm

We deliver all widths between 196 mm and 1195 mm, and all lengths between 850 mm and 3495 mm. The full production width of 1195 mm will be charged for custom formats and is available at an additional cost.

Other formats are available upon request. Offcuts smaller than 150 mm will not be included in the order. Formats can be pre-drilled according to the standard drilling pattern [see QR code on page 27].

STANDARD PANEL FORMATS(W*L)	
1195	2995

CUSTOM FORMATS (W*L)	
196-1195	850-3495

RECOMMENDED WIDTH ADJUSTMENT
295 + 295 + 295 + 295
395 + 395 + 395
595 + 295 + 295
595 + 595
795 + 395
895 + 295
1195

The recommended widths in the table to the left will contribute to sustainable solutions for our customers with minimal waste and scrap on the construction site. For this to work efficiently, all the net panels within the same gross panel must have the same length [see figure].

## PRODUCTION FORMATS STENI NATURE

Steni Nature Standard and Stocked Format: 1195 x 2995 mm

We deliver all widths between 196 mm and 1195 mm, and all lengths between 850 mm and 3495 mm. The full production width of 1195 mm will be charged for custom formats and is available at an additional cost.

Other formats are available upon request. Offcuts smaller than 150 mm will not be included in the order. Formats can be pre-drilled according to the standard drilling pattern [see QR code on page 27].

STANDARD PANEL FORMATS (W*L)	
1195	2995

CUSTOM FORMATS (W*L)	
196-1195	850-3495

RECOMMENDED WIDTH ADJUSTMENT
295 + 295 + 295 + 295
395 + 395 + 395
595 + 295 + 295
595 + 595
795 + 395
895 + 295
1195

The recommended widths in the table to the left will contribute to sustainable solutions for our customers with minimal waste and scrap on the construction site. For this to work efficiently, all the net panels within the same gross panel must have the same length [see figure].

## PRODUCTION FORMATS STENI VISION

Steni Vision is not stocked.

The full production width of 1195 mm will be charged for custom formats and is available at an additional cost. Formats can be pre-drilled according to the standard drilling pattern [see QR code].

STANDARD PANEL FORMATS (W*L)	
1195	2995

CUSTOM FORMATS (W*L)	
1195-1213	850-3190

RECOMMENDED WIDTH ADJUSTMENT
295 + 295 + 295 + 295
395 + 395 + 395
595 + 295 + 295
595 + 595
795 + 395
895 + 295
1195

The recommended widths in the table to the left will contribute to sustainable solutions for our customers with minimal waste and scrap on the construction site. For this to work efficiently, all the net panels within the same gross panel must have the same length [see figure].



Download our standard drilling templates. Scan the QR code or visit steni.com

## PRE-DRILLING PANELS

Pre-drilling follows our standard drilling templates [see our website].

# STENI COLOUR AND STENI VISION DESIGN ELEMENTS

Steni Vision design elements here refer only to standard print designs. All items are delivered undrilled. NB: All dimensions are internal dimensions.

## L-ELEMENT

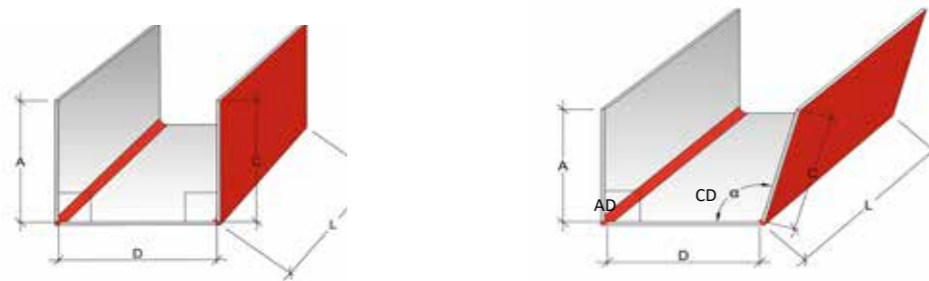
$\alpha AB$ [°]	A (mm)	B (mm)	A+B (mm)	Length (mm)
70 - 150	60 - 1192	60 - 1192	120 - 700	100 - 3495*
			701 - 800	100 - 3000
			801 - 1000	100 - 2400
			1001 - 1250	100 - 2000
			1251-1600	100 - 1500

\* The maximum length of Steni Vision elements is 3190 mm  
The maximum length of non-90° elements is 3300 mm  
Total price for elements = Production cost per. lm. (min. price 1 meter) + panel price per m2.

## U-ELEMENT

$\alpha AD$ [°]	$\alpha CD$ [°]	A (mm)	D (mm)	C (mm)	A+D+C (mm)	Length (mm)
90 - 150	90 - 150	60 - 592	100 - 1187	60 - 592	220 - 700	100 - 3495*
					701 - 800	100 - 3000
					801 - 1000	100 - 2400
					1001 - 1250	100 - 2000
					1251 - 1600	100 - 1500

\* The maximum length of Steni Vision elements is 3190 mm  
Total price for elements = Production cost per. lm. (min. price 1 meter) + panel price per m2.



Please remember that elements will be described as follows in order confirmation:

For L-elements: Wing A / Wing B x Length A / Length B - Angle

For U-elements: Wing A / Base D / Wing C / Length / Angle AD / Angle CD

To avoid any misunderstandings, please specify element dimensions in your purchase order the same way as above.

# STENI NATURE DESIGN ELEMENTS

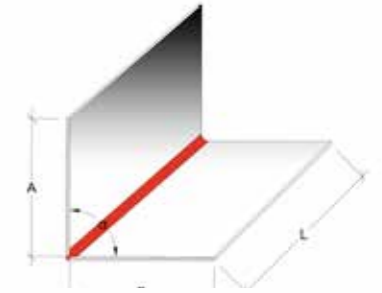
Steni Nature design elements provide smooth, even corners. All items are delivered undrilled. NB: All dimensions are internal dimensions.



## L-ELEMENT $\alpha = 90^\circ$

A (mm)	B (mm)	A+B (mm)	Length fine (mm)	Length medium (mm)	Length coarse (mm)
60 - 594	60 - 794	120 - 290	100 - 3495	100 - 2995	100 - 2995
		291 - 588	100 - 3200	100 - 2500	100 - 2500
		589 - 788	100 - 2995	100 - 2500	100 - 2000
		789 - 1188	100 - 1500	100 - 1500	-

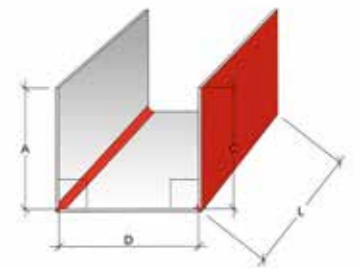
Total price for elements = Production cost per. lm. (min. price 1 meter) + plate price per m2.



## U-ELEMENT $90^\circ+90^\circ$

A (mm)	D (mm)	C (mm)	A+D+C (mm)	Length fine (mm)	Length medium (mm)
60 - 145	120 - 592	60 - 145	240 - 882	100 - 2995	100 - 2995
60 - 594	120 - 592	60 - 594	240 - 1184	100 - 2395	100 - 2395

Total price for elements = Production cost per. lm. (min. price 1 meter) + panel price per m2.



Steni Vision - Nickeby

Steni Nature - Era Contour.  
See more photo - [www.steni.com](http://www.steni.com)

# INSTALLATION

The new installation app makes the installation easier. To avoid costly mistakes on the construction site, we have developed an app in 8 language variants that provides installers with better guidance and added security.

Click on the QR code to access the installation app.



Examples of handling utilities.



Spacer Block for profile.



Spacer Block 5mm.



Glass vacuum lifter

# ADVICE FOR PURCHASERS

## BUY STENI

Steni only sells through building material dealers. If you are a private individual, you should contact your local supplier of building materials. If you are working on major projects requiring more follow-up, please contact one of our sales teams directly or scan the QR code below.

## STOCK ITEMS

If you order one of our stock items, your order will normally be shipped within two weeks.

## WHAT YOU GET

All our products are delivered on pallets, securely packed with protective plastic and straps. Each pallet is labelled with product and order numbers. Each pallet has a packing list providing information about its contents and brief instructions about storage and handling on site, as well as the necessary acceptance inspection.

There will also be information about where you can download installation instructions in your language.

Please remember that you will need to have a forklift truck available to unload the delivery at the construction site. If you do not have a forklift truck, a lorry crane will have to be ordered.

## WHAT TO CONSIDER

Firstly, as a customer, you must decide which products you want and what you want the façade to look like. The formats, colours and composition you choose have a great bearing on the result in terms of both appearance and total cost. If you cannot use our standard formats, we recommend that you contact your local sales representative, who will be able to help you so that together we can find the best solution for your project.

During this process, we will also consider the choice of colour and gloss level, how on-site logistics will be handled, and various other aspects that you as a customer will have to decide on when you purchase custom formats from us. A phone call to us at an early stage can save you a lot of work, time and cost later in the process.

You should order via your local supplier of construction products or through one of our sales teams. Steni will be happy to help you to set up your order and thereby ensure that we understand your needs. For more information, refer to our sales and delivery terms.



Book a project meeting  
(follow the QR code).

# STENI AROUND THE WORLD

Developing and manufacturing high-quality façades in Larvik, Norway since 1965.

Our products have been developed in the most demanding climate, and every day all over the world our façade panels are tested against the wind and weather, sun and rain and temperature fluctuations.

We have developed our products based on decades of experience and feedback, and today we can offer façade panels with a number of unique product advantages and a 60-year functional warranty.

Steni panels are both eco-friendly and pollution-resistant. Robust yet lightweight. Fireproof and frost-resistant. They keep their colour, and moisture just runs off. We call this Steni quality.

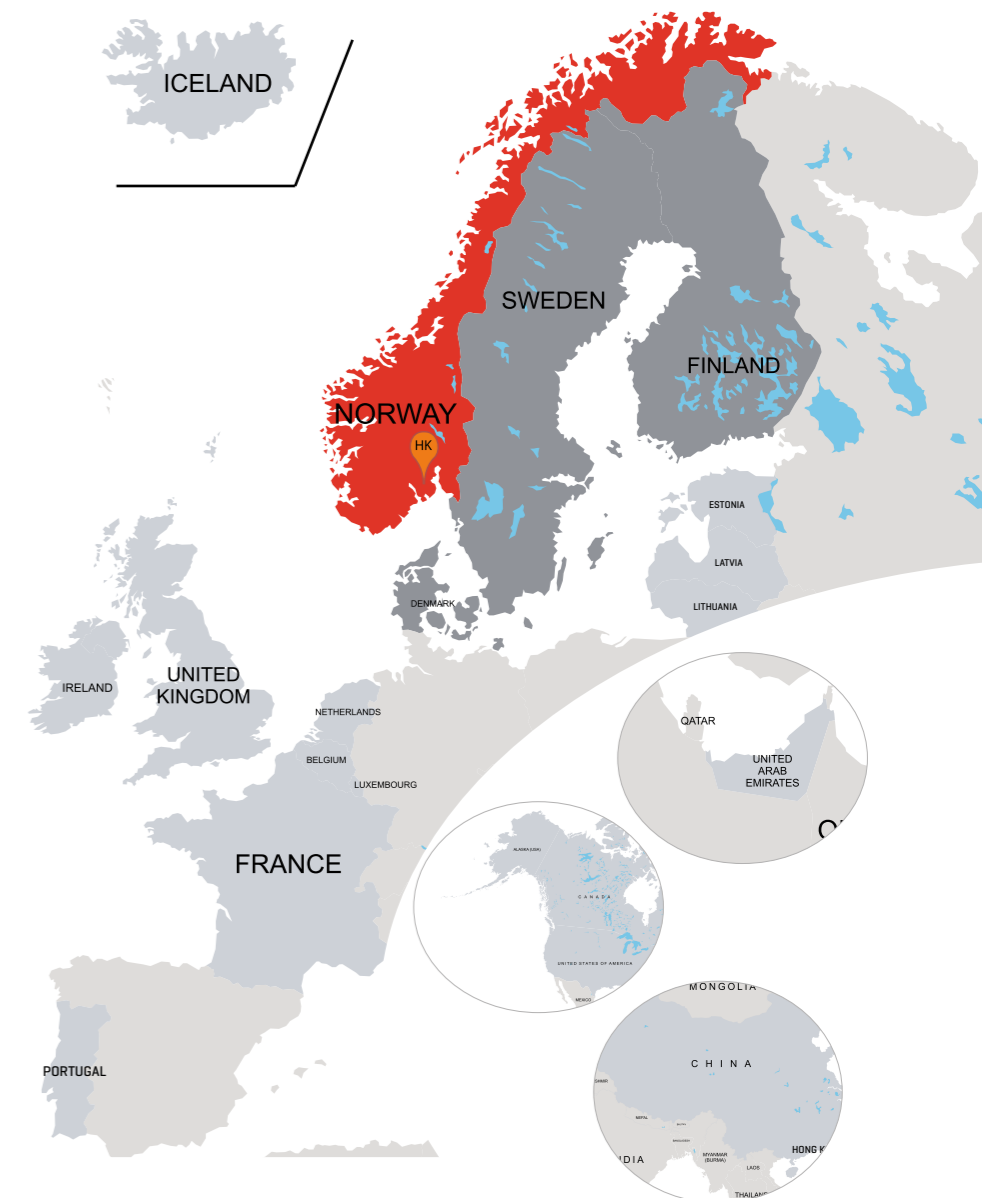
Today, we have sales companies and distributors throughout Europe, North America and the Middle East, and Steni façade panels protect and adorn buildings all over the world.

**HO**  
**Steni AS:**  
Head office [HO] and production  
Lågendalsveien 2633  
NO-3277 Steinsholt, Norway

**Steni sales companies**  
Norway  
Sweden  
Denmark  
Finland

**Steni distributors**  
Canada  
China  
France  
UK  
Hong Kong  
Israel  
Iceland  
Korea  
Latvia/Lithuania  
Mexico  
Belgium/Netherlands/Luxembourg  
Portugal  
US

Sales to other countries are handled by our export department in Norway.





## LASTING EXPRESSIONS

STENI NORWAY [international]  
Head office/Factory/Store outlet  
Lågendalsveien 2633  
NO-3277 Steinsholt  
Norway  
E: info@steni.no  
T: +47 33 15 56 00

### STENI EXPORT

Lågendalsveien 2633  
NO-3277 Steinsholt  
Norway  
E: exsport@steni.com  
T: +47 33 15 56 00

### STENI SWEDEN

Första Långgatan 22  
413 28 Gothenburg  
Sweden  
E: info@steni.se  
T: +46 (0) 31 706 08 50

### STENI DENMARK

Bækkeskovvej 5, 1. sal  
2665 Vallensbæk  
Denmark  
E: steni@steni.dk  
T: +45 70 27 01 22

### STENI FINLAND

Steni Finland Oy  
Rahtitie 3  
01530 Vantaa  
E: myynti@steni.fi  
T: +358 (0)9 855 3420