

Lincoln Local

Lincoln community newsletter

December 2025



Halloween Winners

Page 6

Local Recipe

Page 17

Lincoln Local

Page 18

Thank you to our sponsors



SURVEY

SHAPE YOUR COMMUNITY NEWSLETTER

First off, thank you. It's genuinely lovely to see how many of you read and engage with this newsletter each month. We only truly realised through this process how much people really care about Lincoln and our community — it's special.

Our favourite feedback was: "I really enjoy putting my phone down and spending time reading and connecting with the actual community."

It's important to us that you know this is truly your newsletter, driven entirely by your submissions. While our team is here to help curate and edit slightly for length and clarity, the heart of the content comes straight from you!

In this edition, we're excited to feature the results of our Halloween Competition (thanks for all the fantastic entries!), look ahead to the festive Santa Parade as the year winds down, and welcome the start of summer here in Lincoln.

To help us shape what comes next, we've put a short survey below. Your feedback is so valuable, so please take just a couple of minutes to fill it in and send your reply via email.

Just a couple of housekeeping details:

- We won't be publishing a January edition, due to the holidays but we'll be back in February.
- Submission deadlines are on the 20th of every month.
- Please note that we are all volunteers giving our time around other commitments, so keep that in mind if our replies are a little slow.

We look forward to reading your feedback and submissions!

Mark and Sha

SURVEY

Please email your responses to editor@lincolncommunity.co.nz

1. How are you currently reading this?
 - a. Physically: A copy was delivered to my letterbox
 - b. Physically: I picked up a copy from a location in town
 - c. Digitally: I'm reading the content online
2. What ads or sponsors can you recall from the last magazine?
3. What content would you like to see more of?
4. Have you received a newsletter in your mailbox in the past 3 months? If so were they in good condition?
5. Do you have a "no circulars" or something similar on your mailbox? Do you consider the newsletter a circular?
6. Do you think that the newsletter should be delivered to every mailbox? If so, why or why not?

Win a \$100 Pantry Voucher

Enter survey to go into the draw



WELCOME TO OUR DECEMBER ISSUE

The distribution of the Lincoln Local community newsletter, which is produced monthly, was a major discussion at our recent meeting. In the past it was delivered to letterboxes, but due to lack of funding only about half the town has been receiving one. Our goal is to get it into the homes of as many of our residents as possible.

The question is, if you are interested in getting it, HOW do you want to receive it? Various options are being considered: letterbox delivery, pickup locations such as the library or Community Care, and a digital version online. We need feedback from the community on this, and we are proposing an opinion survey. Look out for that, but you can contact us at any time by email or through our website (see details below).

At our November meeting, we were thrilled to have a full turnout of recently elected councilors, all enthusiastic to represent our community. Present were Aaron McGlinchy, Denise Carrick, and Sarah Barnsley representing Springs Ward (which includes Lincoln). Also present was Tracey MacLeod, elected as a 'Councilor at Large'. This role represents the whole Selwyn District, following a recent review that adjusted ward boundaries. Details aside, all councilors are very keen to be representing you and would be happy to hear of your specific concerns. LCRA is really happy to have their support.

LCRA Membership

A reminder that the Lincoln Community and Residents Association is reaching out for new members. We have created a two-level membership structure: COMMITTEE members and GENERAL MEMBERSHIP. If you are too busy for a large commitment, you are welcome to join the General Membership and simply be kept informed of the Association's workings.

On the other hand, we are very short of Committee Members, and if you are interested in decision-making with the minimum responsibility of 10 monthly meetings, please contact us. We are particularly looking for someone interested in being the Secretary. Another option is joining our newsletter subcommittee, who undertake a wide range of jobs. Email us or contact us through the website (details below).

On behalf of the committee, we are proud to be representing the Lincoln community and are always interested to hear your concerns.

All the best from LCRA

Lindsay Wilson – Chairperson



Official newsletter of the Lincoln Community and Resident's Association
Produced by Mark Song and Sha Jega.

PRINT
Selwyn Print

DESIGN
Justine Holmes Design

CONTACT US
editor@lincolncommunity.co.nz
lincolncommunity.co.nz

Lindsay Wilson (LCRA), Ruth Wood (Lincoln Envirotown), Kerry Thomason (Lincoln Senior Citizens), Lois Thomas (Selwyn Lions Club), Ross Metcalfe (Lincoln Golf Club), Selwyn District Council, Mike Noonan (Community Care), Claire Fahey (Lime Blue Photography, Agnes Owusu

Join our next meeting

7pm, Monday 9th February
Community Care



A close-up, low-angle shot of rain falling onto a green lawn. The raindrops are captured in mid-air, creating a sense of motion. The grass is vibrant green and slightly out of focus in the background. The overall tone is fresh and natural.

Every drop counts

**Help keep water flowing
for everyone this summer.**

**For water-saving tips visit:
selwyn.govt.nz/bewaterwise**

**Be
WATER WISE** 



SOLD 13 DAYS AFTER WHITEFOX TOOK THE REINS

You may have noticed a few more Whitefox signboards appearing around Lincoln lately.

If the name feels new, Whitefox is a boutique real estate agency making waves across Australia and New Zealand. Since launching in 2017, Marty Fox, now also a judge on The Block, has grown the brand to 17 locations, each known for bold, refined marketing and a fresh approach to premium real estate.

After years working in this wonderful community, I recently joined Whitefox to bring that world-class presentation and approach to our local market.

I've always believed in the power of crafting an experience around a listing. How a home is presented, the imagery, the atmosphere, and the story a buyer steps into all shape their first impression and emotional journey.

That belief was recently proven with a premium showhome in Lincoln. It had been listed with another agency for 12 months without success. We took over and completely reimagined the campaign, and the property sold in just 13 days.

That result was not luck; it came from intention and attention to detail.

We started with professional staging. Before marketing went live, a stager reimagined the

spaces. It was not about adding furniture but creating flow, warmth, and a sense of lifestyle

Next, we made sure the property looked as remarkable online as it did in person. High-quality photography and video captured every detail with intention, from the natural light and clean lines to the story each space told. In a market where buyers often fall in love before stepping inside, these visuals set the tone and created excitement from the first click.

Finally, we showed up. Real estate moves fast, and buyers move faster. I made it a priority to respond to every enquiry immediately, sometimes well into the evening. Delays of hours, let alone days, can cost a sale.

By combining elevated presentation, thoughtful storytelling, and responsive service, campaigns feel intentional and alive. This is the approach I bring to every home in Lincoln. If you're thinking about selling or curious about what a more considered approach could look like, I am happy to chat — no pressure, just honest advice on making your home stand out in today's market.



Sha Jega
Sales Advisor and Negotiator

HALLOWEEN COMPETITION WINNERS

What a frightfully fantastic Halloween season it has been for Lincoln! Our community has been absolutely buzzing with spooky-season activity, and it's events like these that remind us just why we love living here.

First off, a huge thank you to everyone who got involved! Seeing the streets full of little monsters for trick-or-treating, the energy at the Light Party, and the moves on the floor at the disco was incredible.

The community spirit was alive and well, proving that Lincoln knows how to celebrate!

We were truly blown away by the response to our competition giveaway. You all went above and beyond with your costumes and decorations, making judging incredibly tough!



Best Costume

The Headless Man!
Anna

Please join us in celebrating the incredible effort that went into the Best Costume entry this year. We were completely spooked by the commitment and creativity shown, and the fact that this impressive look was entirely handmade makes it even more amazing!



Best House Decorations

CSI: Lincoln!
The Locke Family

A heinous killer is on the loose, taking four poor souls at our property alone. Who knows where they might strike next? But make no bones about it, our very best are on the case. And all trick-or-treaters will be questioned about their involvement.

THANK YOU FOR YOUR SUBMISSIONS



NOVEMBER HIGHLIGHTS FROM AROUND LINCOLN

What a wonderful way to wind down the year here in Lincoln! You can truly feel the festive energy as we head into summer. It's been lovely seeing the community start to slow down and enjoy the warmer weather, perfect for end-of-year gatherings and celebrations.

The town recently enjoyed a lovely Plant Fair, showcasing great local work and offering plenty of inspiration. Of course, the countdown to Christmas is fully underway, and it's heartwarming to see decorations and cheerful activity. As the year draws to a close, we hope everyone finds time to relax, recharge, and enjoy all that December in Lincoln has to offer!



Lincoln High School Science Block Opens

The new Science Block at Lincoln High School, a key component of the school's Stage 1 redevelopment in Selwyn, is now officially open and actively in use by students and staff. Construction for the block, which began with foundations being poured in late 2023, has successfully delivered a state-of-the-art facility. The opening ceremony celebrated this milestone, with representatives highlighting the importance of the new building for the community.

The modern block provides 12 high-quality teaching spaces and flexible learning areas designed to encourage collaborative and hands-on investigation across the science curriculum. This crucial development ensures that students have access to up-to-date resources to enhance their science education.



Senior Day Out

Lincoln Senior Citizens

On November 4th, over 40 Lincoln Senior Citizens enjoyed a wonderful day out.

Our first stop was the beautiful local garden, "The Creamery Cottage." The 1800s cottage was surrounded by small gardens with roses in full bloom. The outbuildings, packed with old machinery and carts, triggered happy memories, with many members commenting, "I remember those from years ago." It was wonderful for them to recall their past.

Next, we headed to "Hoofbeats" for a delicious lunch, where the dessert "almost looked too good to eat, but of course we did and it was Yum!!" With full bellies, we took the scenic "Old Taitapu road" back to Lincoln, a fitting end to yet another wonderful day out.

Upcoming Events & Thanks

Christmas Party: Our last meeting for the year is the Christmas party on December 2nd at the Lincoln Bowling Club. Arrival is at 11 am for lunch, entertainment, raffles, and a surprise visit from the "Man in the Red Suit."

Thank You: A huge "THANK YOU" to Prebbleton Fresh Choice for their generous gift voucher, which will provide extra treats for our members.

New members are always welcome! Contacts: Evelyn (0277127195) or Gloria (0274346554).



A NEW GROUP AND EXISTING VENTURES

Support Group

Do you look after a loved one (spouse, parent, child, friend) suffering from an illness like Dementia, Parkinson's, brain injury, or recent loss? The new Support Cuppa Group provides caring help and mutual support. There is no judgement, just carers helping each other.

The group was started by women and mainly remains a women's group, but one male CCL Committee member has volunteered to start a men's group if needed.

Walking Groups

CCL now has three walking groups again.

- The Tuesday Group walks in Lincoln and surrounding areas on the 1st & 3rd Tuesdays and goes further afield on the 2nd and 4th Tuesdays. Much use is made of free bus rides for gold card holders. The coffee stop social at the end of each walk is carefully planned in advance.
- The Wednesday Group is run by Alastair and Jill and their walks are similar to the other groups. Their contingency plan is if the weather is bad, they meet as scheduled and just go to a café for coffee and talk.
- A Friday Group has started with the leadership is being shared, and plenty of room for new members.

Equipment Hire

CCL hires out a range of equipment from Shower Stools to Walking Frames, Wheelchairs, Crutches, Toilet Seats and more, right down to the sometimes very handy, Picker Uppers.

The big advantage of having Health Hire Equipment in Lincoln is that it saves clients having to travel into Christchurch to get the equipment and then having to take it back. Maybe you have an elderly family member coming to stay over Christmas who needs a walker or toilet seat. Rather than have the hassle of travelling with a toilet seat, just hire one.

Kind regards,
Community Care Lincoln

Web: www.lincolncomcare.co.nz

Facebook: facebook.com/lincolncommunitycare

Email: admin@lincolncomcare.co.nz

Phone: Sally on (03) 325-2007.



SUPPORTING OUR CAUSES

Our Club continues to support the international Lions' causes. This month it was those of YOUTH, PEACE and CANCER:

Selwyn Lions Club Scholarships for local School Students

Every year our Club presents a scholarship to a pupil from each of the three local High Schools (Ellesmere, Rolleston and Lincoln). The students apply for the scholarship and then our Trust decides whom is most deserving. This year Mikayla Reid from Ellesmere College and Pranavi Predisetti from Rolleston College were the recipients. Mikayla is going on to Ara Institute of Canterbury to do a 3 year course in Medical Imaging while Pranavi is going to Otago University to study Health Science. Well done girls!

Lions International Schools Peace Poster Competition

The Peace Poster competition has been running for over 4 decades. It is open to students from 11 to 13 years to express what peace means to them through art, this years focus was "Together as One". Our Selwyn winner was Lianna Wentworth from Rolleston Primary School, Lianna was presented with a certificate and a prize. Her entry goes on to the District Lions Competition and the

national winner goes on to the international competition. Here the entrants have the opportunity to be awarded \$5,000 for sharing their vision of what it means when a diverse group of people can come Together As One.

Lions Trust Skin Cancer Screening Bus

Recently the Lions Skin Cancer screening Bus visited Lincoln at our Clubs' invitation and when advertised, it was booked out very quickly. 46 people had the opportunity to be screened by a GP and our very own member, Mandy. A third of those screened were advised to see their GP. We are very grateful to driver Paul who not only drives the bus but is the driving force behind this free service.

Lois Thomas



COMMUNITY GARDENS REPORT

We have conducted three workshops lately. The first was conducted by Roger McLenaghan and Josie Mazzetto on soil types and quality. I have lost count of the years that Roger has so willingly shared his expertise in our “Don’t Treat Your Soil Like Dirt” workshop, and as always he attracted a keen audience. The participants took the opportunity to have their soil tested for its pH.

The second was our annual “Veges 101” workshop for beginning gardeners. It is rewarding to see people trying their hand at sowing seeds and leave the workshop keen to apply what they have learnt.

The third was Ben Hogan’s workshop on worm farming. He led us carefully through the steps in setting up a worm farm, selecting a good location and feeding of the worms. Ben also advised people who reported problems with their existing worm farm.

We have hosted visits as part of a heritage event organised by the Lincoln Historical Society, and participated in the open day for community gardens, organised by Selwyn District Council. And our young friends at Lincoln Kidsfirst Kindergarten spent some time recently planting their garden and setting up a scarecrow.

Our apple trees are looking promising, with good loads of fruit appearing (see photo). However, we will need to do some “thinning” of the clusters now to ensure we don’t get a surplus of small fruit. Some self-thinning of the trees may occur, but inevitably excess fruit will need to be removed by hand. Our practice is to carefully remove small or damaged fruit using scissors or secateurs, leaving just one or maybe two of the largest apples in each cluster. It takes time but your effort will be rewarded at harvest time.

As this is my final report for 2025, I would like to thank the Lincoln Envirotown Trust and our volunteers for their support this year. I am also grateful to Lincoln Hammer Hardware, Coffee Culture and Ellesmere Lions for their generosity, and those of you who have attended at least one of our nine Saturday morning workshops.

Ruth Wood

Coordinator at Lincoln Envirotown Community Gardens
ruth.wood@xtra.co.nz

LINCOLN GOLF CLUB NOVEMBER NEWS

Men's Section

November arrived with a rush, bringing calmer weather after the intense October winds. Thanks to the green staff's consistent preventative maintenance, the course handled the strong winds well—unlike some other local courses. The first summer trophy, the Evans Rosebowl (best 2 rounds out of 3 net), has been won by Alistair Stewart. Daylight Saving has kicked off our popular Twilight competition! It continues to be well-attended, attracting more players each year. Want to join in? Come out on Thursday nights from 4 pm. Our Lincoln North team made it to the Masters final against Hororata. In a hard-fought and tough game, they secured a commendable second place, losing 5.5 to 3.5. Great effort, team!

Ladies' Section

October was quiet, but the Pam Boon trophy was contested, with Judy Campbell coming out

victorious. Sally and Janelle played their Bronze Match, ignoring dreadful conditions—including hail, sleet, wind, and rain! Janelle won the difficult match and will now play in the Rosebowl competition on November 9th at Kaiapoi. Good luck to her!

Club & Course Updates

The course is in great shape, and we are seeing a high number of green fee players, with plenty of out-of-townners enjoying Lincoln. Our membership continues to increase, currently sitting at nearly 570 players. With more juniors joining, we are planning competitions and organised events to support golf across the community. The end of November features our annual match against Hokitika Golf Club. They are sending a large group over, hoping to keep the trophy we 'lent' them last year. I'm sure the Lincoln players will reclaim the silverware and put it back where it belongs!

MERRY

christmas

**HAVE A SAFE AND HAPPY HOLIDAY
FROM THE HARCOURTS LINCOLN TEAM**

If you need real estate advice over the summer break,
call the **Harcourts Lincoln** office and our
team will be in touch to help you take the next step.















Crystal Giles

Tarcille Roffey

Greg Brockbank

Ross Mitchell

Rachael McIntosh

Jeremy Andrews

Deepti Malik

Matthew Hale

Julian Twiss

Dane Petheram

Jan Green

Harcourts Four Seasons Realty

Lincoln Office ☎ 03 662 9933 ✉ lincoln@harcourts.co.nz

Harcourts

NATIONAL AWARDS 2024 - 2025

1ST CLIENT EXPERIENCE - LINCOLN OFFICE



LINCOLN CHRISTMAS PARADE AND MARKET

The beloved community event that celebrates the festive season in downtown Lincoln promises to be another exciting event; with some changes to the traditional parade route and market area.

EVENT DETAILS

- **Date:** Saturday December 13, 2025
- **Parade Time:** leaves the Event Centre at 10:30am - 11:15am approximately.
- **Bike Decoration Competition:** Gathering behind the fire station; starts at 9:30 -judging and prizes at 10:00 then join in the Parade.
- **Market Time:** 9:00am email if you would like a stall. lincolnxmas.stalls@gmail.com
- **Santa Grotto:** After parade: Take a photo with Santa

PARADE ROUTE AND MARKET AREA

Due to Gerald Street being upgraded this year the parade and market area has changed. Below is the new layout. The Christmas Market will be mainly located in and around Liffey Springs Reserve.

Street closures will be in place from 7:00am until 1:30pm, and a traffic diversion will be in effect.

HIGHLIGHTS

- **Float Competition:** All parade entrants will be judged, and a monetary prize; \$500 First prize, will be awarded
- Email on lincoln.xmasfloats@gmail.com and register your float to join the parade
- **Decorated Bikes Competition:** A popular event for kids up to year 8 with prizes and judging starting at 10:00am
- Just turn up with you bike or scooter and you decorated for the Christmas season.
- **Santa's Grotto:** Santa will be available for photos and gift requests at the grotto at the raised playground (swings) in the reserve off of North Belt and Liffey Place.
- **Food and Drink:** Expect a variety of stalls and caravans offering food, treats and refreshments.
- **Shopping:** Browse the market stalls for unique gifts and Christmas goodies, support our local crafts people and organisations.
- **Event Headquarters,** Extra loos, seating and shade tents available near "The Grotto"

See additional Information and watch for updates on the FB page



LINCOLN UNIVERSITY SPONSORS MATATŪ

Te Whare Wānaka o Aoraki Lincoln University is delighted to announce its sponsorship of Matatū, the South Island's Super Rugby Aupiki team.

Since 2023, the University has served as home to Matatū and the Black Ferns' South Island hub, providing access to its world-class sports fields, training facilities, and sport science capabilities.

The new partnership, officially starting 1 January 2026 for an initial three-year period, marks Lincoln University as Matatū's Tertiary Partner. The collaboration will be formally celebrated on Friday 5 December at Matatū's new on-site headquarters.

Enhanced Facilities and Investment

The agreement means Matatū moves into new, fit-for-purpose long-term premises on the Lincoln University campus. This includes renovated office space for administration staff and dedicated training areas, changing facilities, playing fields, and access to the state-of-the-art gym, Whare Hākinakina.

The Selwyn District Council has also invested \$60,000 to upgrade the grounds, benefiting both the women's super rugby team and local community teams. Mayor Lydia Gliddon noted that this investment reflects the district's strong sporting culture, stating that

Matatū, as a symbol of sporting excellence, inspires the community and brings economic benefits.

Shared Vision

Lincoln University Vice-Chancellor Professor Grant Edwards says the partnership is a natural fit for two organizations deeply committed to advancing women's sport nationally and internationally. He highlighted the University's history of contributing to economic and social development through sport, offering the greatest range of sport and recreation management programmes of any New Zealand university.

Matatū General Manager Sarah Munro says, "The Lincoln campus has felt like a welcoming and progressive space. Their investment in facilities and their focus on developing pathways for women in sport aligns perfectly with our Matatū values."

She added that this new chapter strengthens the foundations of Super Rugby Aupiki outreach, including coaching and leadership, will grow with the improved facilities. The Selwyn community will also have 40 hours of access to the grounds over the year, and Matatū is working with the Council to offer locals free tickets to selected games.



SPRING SUPPLIES

Composts And Blends Available

- Vege Mix,
- Mushroom Compost
- Garden Soil
- Natures Best
- Garden Gro
- Check Out Our Range...

SPECIALIZED SOILS

DRY PREMIUM SCREENED

SOIL

5 m3 \$315
10m3 \$575

GARDEN SOIL PREMIUM

COMPOST

5 m3 \$400
10m3 \$750

Priced For Local Delivery Including Gst *

Inquire Pricing for your Location



021 241 7908

1543 Springs Road, Lincoln

CONTACT US



BRIDGESTONE
LINCOLN

**TYRE
CENTRE**

📍 23 Gerald Street, Lincoln

☎ 03 325 2129 🌐 fb.com/bridgestonelincoln



Wishing You a Wonderful Festive Season.

Thank you to our community for your continued trust and support in 2025.
We look forward to another busy year in 2026!



Thinking of selling? We are here to help.

Anna James
027 222 2742

Dawn Pollard
022 073 7580

Tracy Stevenson
027 543 9029

Chelsea Palmer
021 0245 0395

Arizto Ltd. Licensed REAA 2008



LED STREETLIGHT UPGRADE COMPLETED

All 10,000 streetlights across the Waikirikiri Selwyn district have now been converted to energy-efficient LED technology, delivering major savings and sustainability benefits.

The five-year project by the Selwyn District Council and majority funded by the New Zealand Transport Agency Waka Kotahi, saw around 5,000 traditional sodium lamps upgraded to LEDs.

These modern lights use significantly less power, are cheaper to maintain, and boast a lifespan of up to 20 years—five times longer than the old bulbs, Council Executive Director Infrastructure and Property Tim Mason says.

“This is a great example of how smart infrastructure investments can deliver long-term financial and environmental benefits for our community. About 10% of our energy use is from streetlighting, so this change has a big impact. We’ve saved about \$536,000 on power

bills over the past four years and that doesn’t include the savings on maintenance costs. That helps keep our costs down and frees up funds for other road maintenance,” Mr Mason says.

The savings so far have helped the Council upgrade lighting around Whitecliffs and carry out more road maintenance.

Energy used has decreased too, falling by 21% since 2019, despite more lights being added each year across the district.

The initiative has also contributed to a significant reduction in greenhouse gas emissions, with analysis showing a drop of approximately 125 tonnes of CO₂ equivalent between the 2021/22 and 2023/24 financial years.



BABY ROASTED CARROTS WITH THYME HONEY, & WHIPPED RICOTTA



Claire Fahey
Lime Blue Photography

Serves 3-4

Time: 30 minutes

Carrots

1 bunch baby carrots*, scrubbed
Olive oil
Salt
1-2 tbsp Thyme honey**, warmed
Fresh thyme sprigs

Whipped Ricotta

1 cup ricotta
Pinch of salt
Squeeze of lemon
Black pepper (optional)

Method

1. Preheat oven to 220°C fan. Arrange the baby carrots on a lined tray.
2. Toss the carrots with a light drizzle of olive oil and a good pinch of salt.
3. Add one sprig of thyme to the tray.
4. Roast for 20-25 minutes, flipping once, until the carrots are golden and tender.
5. While they cook, blend the ricotta with cream or olive oil, salt, and a squeeze of lemon until smooth and fluffy. Chill until serving.
6. When the carrots come out of the oven, drizzle them immediately with warm honey so it melts and coats. Strip a few fresh thyme leaves over the top.
7. To serve, spread or swoosh the whipped ricotta onto a plate and gently pile the honeyed carrots over - top with extra thyme.



Gill Brothers Farm produce. We are proud to be a part of the Lincoln community, bringing you the freshest, highest quality produce
251 Tancreds Road, Lincoln



Welcome to **Bee My Honey**** — our little farm shop in Lincoln! We're all about fresh flavours, friendly faces, and keeping things local.
251 Tancreds Road, Lincoln



LIGHTING UP THE STAGE – MUSIC TUTOR’S SPOTLIGHT ON VOCAL HEALTH

Lincoln local Michelle Keating is passionate about performing arts and loves making a difference in the community as a music tutor. While sitting inside The Lincoln Pantry gazing out at the rain, she reminisced about performing on stage as a child. She now runs music lessons in Lincoln.

“I started Vocal Tones in 2022 after moving to Lincoln from Lower Hutt where I grew up. I teach singing, beginner piano, and help people with vocal injuries and voice disorders. I also work at Ashburton Hospital as a Speech Therapist working with people with serious illnesses. Getting a job there was also why I moved to Lincoln.”

Specialising in music and health science is rewarding for Michelle. She studied performing arts and speech pathology at university and was inspired by The Sound of Music star Julie Andrews who suffered from a vocal injury that permanently affected her singing voice. Vocal health is about protecting the voice, and it is becoming more recognised in New Zealand.

“Working in a hospital can be tough so it’s a good balance for me teaching music as well. It’s rewarding seeing my

students conquer a new song each week!”

Michelle recently travelled to Malta to attend a speech therapy conference and spent a few weeks holidaying in Spain soaking up the warm weather, history, and culture.

Still beaming from her trip, Michelle’s face lit up as she talked about what’s on the horizon. Her students are preparing for the Vocal Tones End of Year Showcase on 14th December at the Lincoln Event Centre. She is also keeping busy as co-vice president of the NZ Association of Teachers of Singing (NEWZATS) and looks forward to connecting and collaborating with music teachers in Selwyn.”

Agnes Owusu

Each month we spotlight a Lincoln community member. Know someone with a story to share?

Nominate them at editor@lincolncommunity.co.nz



SAT 1 Dec

Christmas Crafts

3:30pm – 4:30pm, Monday, December 1st

@ Lincoln Event Centre

Get into the festive spirit with our Christmas Crafts afternoon! We'll be making fun, easy crafts that are perfect for decorating your home or gifting to loved ones. All ages and skill levels welcome - just bring your holiday cheer and creativity!

\$5.00 + Booking Fee



FRI 5 Dec

Masterpieces & Mocktails

7pm - 9 pm, Friday 5 December 2025

@ Lincoln Event Centre

Join us for a fun, creative evening at our relaxed Paint 'n' Sip session. A professional will guide you step-by-step to create your own masterpiece to take home. Enjoy tasty snacks and refreshing mocktails while you paint.

16+ years. \$35 per person



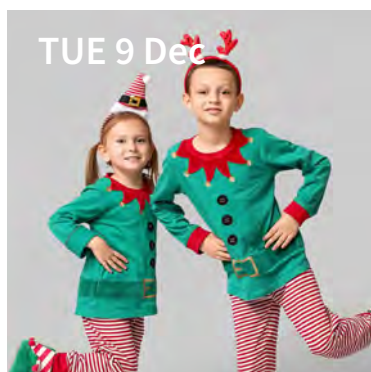
SAT 6 Dec

Christmas Storytime with Sarina Dickson

2–2.30pm, Saturday 6 December

Lincoln Library and Service Centre

A spectacular event packed with fun, food and entertainment for the whole community. Enjoy bouncy castles, face painting, fair games, emergency vehicles, pony rides, petting animals, live music and dance performances, art show, raffle, and a special visitor from the North Pole! Plus a white elephant sale, silent auction, food trucks, bake sale, Christmas market with local vendors, and more. Entry: \$5 per adult, kids free.



TUE 9 Dec

Little Dancing Elves

10.30–11am, Tuesday 9 December

Lincoln Event Centre

Jingle all the way to Christmas with our festive Little Dancing Feet classes! Enjoy the candy cane twist, reindeer freeze dance, and snowman stomp to groovy jingly jams. Dress in your best festive outfit and get ready to party like little dancing elves!

1–5 years. \$5.30 per child



SAT 20 Dec

Selwyn Community Choir

11.15am–12pm, Saturday 20 December,

Te Ara Ātea

Take some time out in the busy lead up to Christmas to relax and enjoy the voices of the Selwyn Community Choir. They'll perform a mix of songs from various genres, along with some well-loved Christmas favourites to get you in the festive spirit.

Drop-in



Sunday Music Sessions

Our Sunday Music Sessions run every Sunday from 3– 5pm

Sun 7 December Duopoly

Sun 14 December Henry McIlraith

Sun 21 December Anna & Damo

Sun 28 December Leah Kelsey

Come on down and enjoy the good food, good brews and good tunes!



Down By The Liffey Gallery

Opening hours: 11.30am – 2.30pm Thursday

10am – 4pm Friday to Sunday

Down By The Liffey Gallery, 1 James St, Lincoln

A wonderful range of artworks and sculptures created by members of the Down by the Liffey Gallery. This show has a wonderful assortment of styles, colour and subject matter - come and explore the world of art!

Dec 4 - Jan 11

GALLERY CLOSED: DEC 22 - JAN 7



Bring Your Own Bub Session

Every Wednesday 11:30am

17 West Belt Lincoln

If you haven't heard: BYOBs are back at The Apollo! We're thrilled to welcome you and your little ones back for our beloved BYOB — Bring Your Own Bubs (or someone else's!) screenings.

Designed with parents and caregivers in mind, babies are welcome, crying is accepted, and prams are encouraged! No bub? No problem! Everyone's invited to join us for a laid-back mid-morning cinema experience.



Your Healing Starts Today

Are you, a friend or family member navigating emotional struggles, life transitions, relationship challenges, mental health concerns, or something else? — I'm here to help.

Sharon Hess-Rossouw | Professional Counsellor
transitionscounselling.nz | 022 350 0382 | Book Online

For all your home Maintenance and Repairs



**SELWYN BUILDING
& MAINTENANCE**

Phone Shane 0224035450



BIG FILMS, TINY CINEMA, MAXIMUM VIBES

Snuggle into your seat (or, if you're coming with the family, maybe two seats!). December is rolling out a reel of stories worth leaving the house for. From high-stakes historical drama to the magic of the festive season and, of course, a little animated chaos, our cosy wee cinema is bringing the big screen to life in the most charming way possible.

Plenty of Apollo favourites are still lighting up the screen, including Prime Minister, and Wicked: For Good, but check out what's hitting the big screen this month: below — grab your Laboratory treats, and you just might find your new favourite film!



Eternity

Fantasy/Drama PG / 114 minutes / 4 December

A high-concept romantic comedy asking the ultimate question about lasting love. Arriving in the afterlife, Joan must choose between the husband she loved or her first love who has been waiting for her. This film is a truly bittersweet journey. at your heartstrings.



Nuremberg

Psychological Thriller M / 148 minutes / 4 December

Russell Crowe and Rami Malek star in this intense drama based on the WWII trials. A U.S. Army psychiatrist must interview Hermann Göring to crack his formidable facade and ensure justice is served. Is this the end of the road?



André Rieu's 2025 Xmas Concert Music/Event / 164 minutes / 6 December

Celebrate Christmas with the King of the Waltz! Join André Rieu and his orchestra for a joyful concert, filmed in his hometown of Maastricht. Expect beautiful waltzes, carols, and festive surprises.



Zootopia 2

Animation/Adventure / 108 minutes / 11 December

Judy Hopps and Nick Wilde are back to investigate a new case! A mysterious reptilian newcomer disrupts the city, testing their partnership. A colourful, hilarious sequel for all ages. we go to protect family.



Not Only Fred Dagg

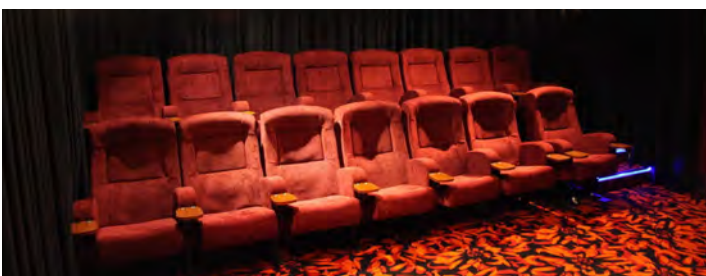
Documentary M / 103 minutes / 26 December

An intimate look at the life and genius of New Zealand's greatest satirist, John Clarke. Told by his daughter, this film reveals the man behind the iconic Fred Dagg character. Funny, heartfelt, and essential viewing.



The SpongeBob Movie: Search for SquarePants Animation/Comedy TBC / 96 minutes / 26 December

High stakes in Bikini Bottom! SpongeBob and Patrick must journey to the ocean depths to find his missing square pants. An epic quest facing the ghostly Flying Dutchman. Hilarious holiday fun! refuse to give up. Don't miss this



APOLLO
LINCOLN



Parents, help your child read and write with confidence

Word Whizz makes it easy for Kiwi parents to boost their child's early literacy skills, helping them catch up or excel in reading and writing.

14-Day Free Trial – wordwhizz.co.nz

★ Builds reading fluency ★ Strengthens spelling foundations

TIME TO PLAN A NEW

Adventure

Multi Award Winning Travel Brokerage



I understand that everyone's needs are different, and take the time to create a travel plan that's as individual as you are.

Travel with confidence, I'm available 24/7 while you travel so you can relax.



Sally Russ

TRAVEL MANAGER



021 632 099



sally@kbtravel.co.nz



Lincoln Local, Christchurch



kellybowatertravel.co.nz

Kelly Bowater
TRAVEL

Approved Travel Broker of Travel Managers Group Limited

USEFUL CONTACTS

Art Group of Lincoln	Faye 347 3399
Community Garden	021 074 3905
Death Café Lincoln	020 425 0369
Down by the Liffey Gallery	325 2877
Ellesmere Badminton Club	027 325 2044
Ellesmere Indoor Bowls	325 3143
Ellesmere Probus Club	325 6165
Junior Enviro Action Group	027 307 0767
Kaituna Golf Course	027 477 9425
Liffey Toastmasters	027 955 7996
Lincoln Badminton Club	347 9707
Lincoln Bowling Club	325 2289
Lincoln Bridge Club	325 3222
Lincoln Business Assn	325 2039
Lincoln Community Care	325 2007
Lincoln Cricket Club	029 240 0093
Lincoln & Districts Historical Soc.	325 3320
Lincoln Envirotown	329 5858
Lincoln Farmers Market	329 5757
Lincoln Girl Guides	027 462 8871
Lincoln Golf Club	325 2453
Lincoln ICONZ	347 8722
Lincoln Indoor Bowls	347 3212
Lincoln Masonic Lodge	349 9905
Lincoln Men's Shed	260 1348
Lincoln Netball Club	lincolnnetballsecretary@gmail.com
Lincoln Outdoor Bowls	325 2289
Lincoln Patchwork and Quilting	021 129 2833
Lincoln Plunket	325 2179
Lincoln Rugby Club	027 303 1879
Lincoln Scouts	021 258 5680 (text)
Lincoln Table Tennis Club	325 7694
Lincoln Tennis Club	lincolntennissnz@gmail.com
Lincoln Women's Institute	741 1549
Mother4Mother	357 4970
Rotary Club of Lincoln	029 999 8330
Selwyn Lions	325 7957
Selwyn Parenting Network	021 166 8603
Selwyn Printing Co.	741 3049
Senior Citizens Club	027 712 7195
SeniorNet	027 547 4793
Spinning/Knitting Group	325 3320
Springs Day Club	329 5634
Springston Evening Garden Club	344 5781
Springston Garden Club (daytime)	325 5002
Tai Tapu Garden Club	329 6268
Time Banking	423 0456
Toy Library	021 044 2407
U3A Ellesmere	028 415 4961
Community Dental	0800 846 983
Healthline	0800 611 116
Lincoln Comm. Response	325 7732
Lincoln Library	347 2876
Lincoln Police	378 0160
Lincoln Fire Station	325 2801
Nurse Maude	375 4200
Selwyn Community Patrol	info@selwyncommunitypatrol.org.nz

HER KEY TO OPENING DOORS? HARD WORK AND EMPATHY.

SHA JEGA
ADVISOR & NEGOTIATOR

027 375 3670
SHA@WHITEFOXREALESTATE.CO.NZ

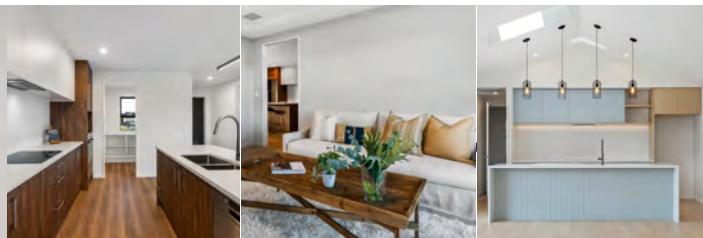
WHITEFOX

WHITEFOX NZ PTY LTD, LICENSED UNDER THE REA ACT 2008



HOMES BY

PARKLANE



New Builds in Lincoln From \$729,000*

At Homes by Parklane, we've been building quality homes across Canterbury for over 25 years, thoughtfully creating spaces where families thrive and communities grow.

Earlsbrook in Lincoln offers the perfect blend of peaceful living and modern convenience - surrounded by parks, great schools, cafés, and a welcoming community spirit.

Why Build with us?

- New builds from \$729,000*
- Contemporary designs with quality finishes
- Backed by a 10-Year Master Build Guarantee

Let's discuss your dream home build:

James Maher - 029 201 2453

Ashish Sapra - 021 265 9394

parklane.nz



*T's & C's Apply