

# Lincoln Local

Lincoln community newsletter

March 2026



Community Gardens Report  
Page 5

Lincoln Town Centre Update  
Page 10

Still forms, moving land  
Page 15

Thank you to our sponsors



## WELCOME TO OUR MARCH ISSUE

Hope this finds you all well amidst the very patchy summer weather. Please remember that if you have any particular community issues don't hesitate to contact us via the email address below or through our website - [Lincolncommunity.co.nz](http://Lincolncommunity.co.nz). Of a more personal nature you could contact Community Care.

While it is fantastic to continue producing this wonderful newsletter, it is with some disappointment to bring you the news that we don't believe it is sustainable to continue delivering it to letter boxes. From April the newsletter will be available at special stands at specific locations such as the library. The New World supermarket, Community Care, and others to be confirmed. It will also be available to read digitally on our website. The delivery to letter boxes will cease from April.

Selwyn Water (SWL) is up and running. Councillors have just been given budget details a week ago.

This council owned entity has been created to manage our districts water and waste water reticulation systems (not including rural water wells and septic tank systems). An independent public meeting was held recently (10 th Feb) at the Lincoln Event Centre with a small number of people attending along with four councillors. My brief bullet point summary from the meeting is as follows;

- No councillors present were supportive of the creation of this new entity as was voted on and approved by the previous council.
- No person in the room was supportive of the new entity with many details unclear and question unanswered.
- It was firstly established that SWL was here to stay and could not be disestablished without unacceptable cost to the rate payers.
- Despite work being underway to set up SWL for nearly 10 months Council were just being given budget details in the next day or two. As a result, not many questions could be answered.
- The councillors present with their collective suspicions were adamant that further progress would be under close scrutiny by the new council.

As a result, I don't think many folks would have gone home particularly satisfied and rightfully so. In conclusion all I can say is watch this space.

The town centre upgrade construction is well underway and I would be surprised if any of you have not been frustrated by resulting issues. Unfortunately, this project was always going to be difficult to cope with by everybody including the contractors and especially the businesses. Every business in the construction zone has been struggling and some more than others. The main point I would like to get across here is that it's vitally important to support your local businesses. It is critical to their survival. Secondly, I can tell you that our local councillors have been working hard to improve the effects it is having on our community and we all need to be patient.

### LCRA Membership

For several months now we have been on a membership campaign and I am very disappointed to report that we have had nobody coming forward. We are at the desperate stage now and we will be increasing our advertising effort to attract more membership. The town deserves an active community association but it needs people to drive it. So please, if you care about your community, contact us to find out more.

We have created a two-level membership structure, COMMITTEE members and GENERAL MEMBERSHIP. If you are too busy and don't want commitment or responsibility you welcome to join the General Membership. General Members will be kept informed of the Associations workings.

This association has the Lincoln community at heart and is committed to serving its residents. If you are interested in helping, please email us [lincolnresidentsinc@gmail.com](mailto:lincolnresidentsinc@gmail.com) or contact us through the website ([www.lincolncommunity.co.nz](http://www.lincolncommunity.co.nz))

All the best from LCRA ,

**Lindsay Wilson**

Chairperson

# Shape our community.

Join our monthly meeting. All welcome

- Featuring an elected councillor.
- Voice concerns.
- Make suggestions.

7pm, Monday 9th March  
Community Care



Official newsletter of the Lincoln Community and Resident's Association  
March 2026

#### CONTACT US

editor@lincolncommunity.co.nz  
lincolncommunity.co.nz

#### CONTRIBUTORS

Lindsay Wilson (LCRA), Lois Thomas (Selwyn Lions Club), Ross Metcalfe (Lincoln Golf Club), Ruth Wood (Lincoln Envirotown), Yvonne Morgan (St Patricks Craft and Friendship Group), Kerry Thomason (Lincoln Senior Citizens), Selwyn District

Lincoln Local is produced by:

## Lincoln's trusted real estate advisor

sha@officeroad.co.nz  
0273753670

Sha Jega  
Real Estate Advisor





## WISHING A HAPPY NEW YEAR TO OUR READERS!

Wishing a Happy New Year to our readers! Naturally activities for our Club were rather quiet over the festive season but 2026 promises to be bigger, busier and brighter than ever.

**Summer in Selwyn events:** Selwyn District Council are hosting a number of events across our district to bring residents together to celebrate summer. Our Club is honoured to be asked to support these by providing our 'Chef skills on the BBQs' at each event. In Rolleston on 23rd January, sponsored by Adam from Arbor Green, we cooked over 150 sausages for the Teddy Bears Picnic.

Sadly the weather wasn't really in our favour but we made just over \$300 profit to give back to our communities in the future. Then, on February 7th, the weather was perfect and we did it all again at the very popular Kite Day in Rolleston. We succeeded in raising \$1,000 which will also go back to the community. With another event scheduled in Darfield, we will have honed our cooking skills and raised even more funds for Selwyn residents in need.

**The Induction of another new member to our Club:** We always welcome new members with

open arms; they bring new skills and a vibrancy to our team. At our February Social meeting Teneale was inducted into the Club, supported by her sponsor Helen W. We look forward to having her assistance with our various projects and events.

**Ann's informative presentation:** At each of our Social meetings we invite a guest speaker; this time it was Ann Saunders from 'Heads Up For Kids' (HU4K). This Lions International project raises money to run programmes for young New Zealanders who would not otherwise get the opportunities.

The project incorporates members collecting old NZ decimal and pre-decimal currency as well as all foreign money. The moneys are redeemed for NZ dollars and used to fund the programmes. To date Lions Clubs have collected over 28.8 tons of coins and thousands of bank notes, totaling \$612,000. This is the equivalent in weight of 4 elephants or 460 cattle or 6450 cats. The Reserve Bank estimates there is still around 480 million old coins and \$20 million in notes still unaccounted for – wow!!



## LINCOLN ENVIROTOWN COMMUNITY GARDENS

As I reported previously in January, we have enjoyed a good growing season, despite the vagaries of our “summer”, with especially large crops of beans and brassicas. However, recent soil testing on all our vegetable plots, conducted by Keith Cameron of Lincoln University, has revealed some interesting results which indicate that we can improve vegetable production if we follow his recommendations. For example:

- Soil pH is high, so no lime is needed;
- Plant-available phosphorus is very high, so no more phosphorus fertiliser or manure is required;
- Soil calcium, magnesium and potassium levels are high, so none of these need to be applied;
- Soil sulphur and soil sulphate levels are below the optimum values, but these can be remedied by applying sulphate and sulphur respectively;
- Soil organic matter levels are high, due to the annual input of compost (this is good);
- The Carbon to Nitrogen ratio (C:N) is too high, and this will limit the nitrogen supply to plants.

This is a key finding because low nitrogen limits plant growth. Keith has recommended a programme of application of ammonium fertiliser (or blood and bone fertiliser in organic gardens) to reduce the imbalance Keith met with our volunteers recently to discuss

his findings, and to suggest how we can improve the quality of our soil for growing vegetables and berries, with addressing the high C:N ratio a priority.

Nashi pear trees (or Asian pears) arrived in New Zealand in 1982, and the fruit has become popular. Now there are four pear varieties growing here – Hosui, Nijisseiki, Kosui and Reddy Robin.

Our tree, a Nijisseiki, which has grown for about ten years, has been a poor performer, usually delivering just a few pears each season. These were attacked by birds and have often fallen before ripening – very disappointing. However, this season we have had a bumper crop. I’m not sure if this was because we covered the tree with nylon netting, or more favourable growing conditions.

Our sunflowers have also thrived this season, reaching two metres in height. Even though the community gardens area is quite sheltered, we had to tie them to stake to prevent them being blown over by the wind. Emily and Caleb helped with the harvest. The pine hedge that surrounds three sides of the garden and orchard area gives great wind protection, but can also shade the garden. Recently the hedge had grown too a point where it needed a major trim. Shawn at Elite Hedges did this job for a very reasonable price.

**Ruth Wood**  
Coordinator

## LINCOLN GOLF CLUB

The golfing New Year started off with some challenging weather, including rain, hail and thunder storms. Despite these challenges the first month ended with fantastic weather, a perfect warm and sunny day for the official opening.

The first event of the year was the most anticipated Shootout competition. From the last 2 months of last year, players (male and female) have been working hard to earn a position in the coveted final. It seems like it is getting more difficult each year as the score to get in are becoming lower and lower.

The shootout competition is a 9 hole knockout match where from just 10 starters 1 player is knocked out after each hole. Leaving just 2 to battle it out for the honours on the last hole. The pressure mounts from the first hole (no one wants to be the first out) and increases right to the last hole. Not to mention the large a number of spectators watching.

This year's worthy winners who were able to withstand the pressure were;

- Ladies – Carol Limber
- Men's – Ron McLaren

The end of January brought the official Opening Day competition, with a record number of players, 90 attending. Despite the record numbers the play went well and everyone had a good today.

Competition for the day was Mixed American

foursomes. Competition was tough with many ties for 2nd , 3rd and forth. However, coming out clear on top and taking away the Watson trophy was the team off; Sally Newton & Dave Shannon. Well done!

Lincoln Golf club is doing very well. So much so that there was a pause on new members for a while Current membership now stands at over 600.

### Lincoln Golf Club in the News.

The club was recently featured on TVNZ in regard to the Canterbury Golf Futures program which aims to capture the imagination of young people of all skill levels and backgrounds to be active for life, meet new friends, develop valuable life skills and provide opportunities for families to learn and play together.

Great to see the turnout of young players, and how we as a small club in Lincoln are contributing not just in the Selwyn District but for Canterbury as a whole. There maybe a few places left in the futures program please check it out at [www.futurescanterbury.co.nz](http://www.futurescanterbury.co.nz)

1. *Watson Winners = Sally Newton and Dave Shannon*
2. *Shootout – Ron McLaren (right) with Patron Morrie Henderson (left)*
3. *Shootout winner Ladies – Carol Limber (right) with Nancy Moroney (left)*



## LINCOLN SENIOR CITIZENS

The 3rd of February saw 41 of our fabulous Lincoln Senior Citizens members brave the horrible weather that we had on that day and come along to meet up at the Lincoln Bowling club rooms. It was great to see so many happy faces and to hear all “the chatter” as they caught up with their friends and all their news. There was, of course, lots of raffles and the always popular sales table.

Our guest speaker was Anne, who gave us a talk on her time as a nurse who has worked in several of our NZ prisons. She then opened the floor for any questions and there were quite a number. She was able to answer them all clearly and many of our members now understand the challenges that can arise in our prisons. Thank you Anne for making your time available it was appreciated by all. Then it was time for afternoon tea and it was very nice and popular with all again. A great time for more chat and interaction with others, it was another great day enjoyed by all.

### Upcoming Events.

Our next meeting is on the 3rd of March at the Lincoln Events Centre this time at 1.30pm and will be our AGM. Yes another year has slipped by how does that happen so quickly? Yes there will be our popular sales table and raffles and of course the afternoon tea and nibbles. There will be lots of time for a chat and catching up with friends.

So come along and vote for your 2026 Office holders.

The 7th of April will be our first bus trip for the year. We will visit the Resource recovery park at Rolleston and then head to Darfield for lunch. We look forward to seeing you all there again.

New members are always welcome and if you think this is for you and you would like to join us we would love to meet you. Come along and meet us.

Contacts are: Evelyn on 0277127195  
or Gloria on 0274346554.

## ST PATRICKS CRAFT AND FRIENDSHIP GROUP

We are a small group that meet at St Patrick’s Catholic church in Gerald St most Tuesdays from 1.30 pm, till 3.30pm. Everyone is welcome to join our group.

You are welcome to bring along a craft that you are doing or just join us for friendship and a cuppa. We have a couple of outings to visit somewhere of interest each year. In 2025 we went to The Gerbera growers on Days Road in Springston. A lot of people don’t even know they are there. You can buy their beautiful flowers directly. What a bonus!

We also went to Ashburton to Ashfords and learnt all about their spinning wheels and their looms. Then we went to a beautiful Maple Garden.



People are welcome to come along anytime and if they wish they can ring Yvonne on either 027 334 1151 or 366 9795 for any enquiries.



# Harvest Festival Selwyn

Visit  
[selwyn.nz](http://selwyn.nz)

**Saturday 14 March, 10am–3pm**  
**Rolleston Town Centre**



Presented by  
**ArborGreen**

Enjoy a bustling farmers’ market, live music, farmyard animals, bouncy castles, and rides – fun for the whole family!





## KURA NEWSLETTER

Ngā mihi nui e te whānau... it has been wonderful welcoming our tamariki back for the start of 2026. There is a real sense of energy and excitement across our school as classrooms fill again with laughter and the buzz of learning. I always love this time of year, it feels a little like launching a new voyage together, with fresh goals and big hopes for what our learners will achieve.

### Looking Ahead – Building for the Future

This year is a significant one for our school property journey. We are excited to be moving forward with:

- The relocation of the CEBUS (Te Waipuna – James Street) block
- The construction of our new 10-classroom teaching block
- The subsequent development of a new junior playground

These projects are essential as our school continues to grow and will help us create learning spaces that support our students and teachers.

Of course, large projects bring disruption. We know the changes to parking, site access, and pick-up and drop-off routines have required patience and flexibility from everyone. Thank you for your understanding

and support, it has made a real difference.

Our key priority throughout this period is very clear:

- Student and whānau safety comes first
- High-quality teaching and learning continues uninterrupted

As part of this, we ask that whānau do not use the staff carpark on James Street. Using this area means crossing the main footpath where many of our students are entering the school, and we want to minimise any risk in this busy area. We also ask that whānau take extra care when using the church carpark, as this is another high-traffic area with many pedestrians during drop-off and pick-up times. Thank you for helping us keep everyone safe.

### Curriculum Focus for 2026

Alongside our property developments, our learning focus continues to be the implementation of the refreshed English and Mathematics curriculum.

Over the past two years, our staff have worked incredibly hard to build strong programmes aligned with Te Mātaiaho, and the PYP framework. Because of this work, we are in a strong position for 2026.

This year we will continue to:

- Refine teaching programmes in Literacy and Mathematics
- Strengthen inquiry-based learning through our PYP journey
- Align learning progressions clearly for students and whānau

#### Assessment and Reporting to Whānau

We will also continue to strengthen our assessment and reporting practices to whānau. Last year we introduced new approaches aligned with Ministry expectations and began using clearer progress descriptors.

While some Ministry guidance has only recently been released, the changes we made in 2025 are very much in line with the new direction.

This means we are well placed to continue improving in 2026. This year will include:

Further refinement of reporting clarity for whānau

Continued alignment with the refreshed curriculum

Implementation of the new SMART assessment tool

Our aim is simple, clear, meaningful information that helps us work together to support your child's learning.

Thank you again for the way you have supported the school through changes to traffic flows, parking, and routines. Your care and cooperation show our tamariki what Kotahitanga, working together, really looks like.

This is going to be a big year for OUR school.

New buildings, new learning opportunities, and continued growth for our students and staff. As always, I feel incredibly proud to be part of such a supportive and forward-thinking community.

Here's to a fantastic start to 2026.

Ngā mihi nui, nā

Chris Nord

# CHANGE

## OF SEASON. CHANGE OF ADDRESS?

With our personalised service and in-depth knowledge of the local market, we'll support you every step of the way to ensure a smooth transition and help you **achieve the best possible price for your property.**

Contact us today for a free, no-obligation appraisal of your home and discover its true market value.

**Harcourts**

NATIONAL AWARDS  
2024 - 2025

**1ST CLIENT  
EXPERIENCE**

LINCOLN OFFICE



Tarcille Roffey

Greg Brockbank

Ross Mitchell

Rachael McIntosh

Jeremy Andrews

Deepti Malik

Matthew Hale

Julian Twiss

Dane Petheram

Jan Green

**Harcourts** Four Seasons Realty

Lincoln Office ☎ 03 662 9933 ✉ [lincoln@harcourts.co.nz](mailto:lincoln@harcourts.co.nz)

# LINCOLN TOWN CENTRE: PROGRESS TO DATE

## Progress to date and next steps

Work is steadily progressing on the Lincoln Town Centre project, with the team continuing to focus on safety and doing everything they can to reduce disruption for residents, businesses, and people travelling through the area.

Crews are currently working at depths of up to four metres to install essential underground infrastructure. This requires careful excavation and sequencing to ensure the work is completed safely and to a high standard. Throughout this phase, two lanes of traffic are being maintained on either side of the work zone to support smooth travel through the town centre.

Here are some stats as of February 2026:

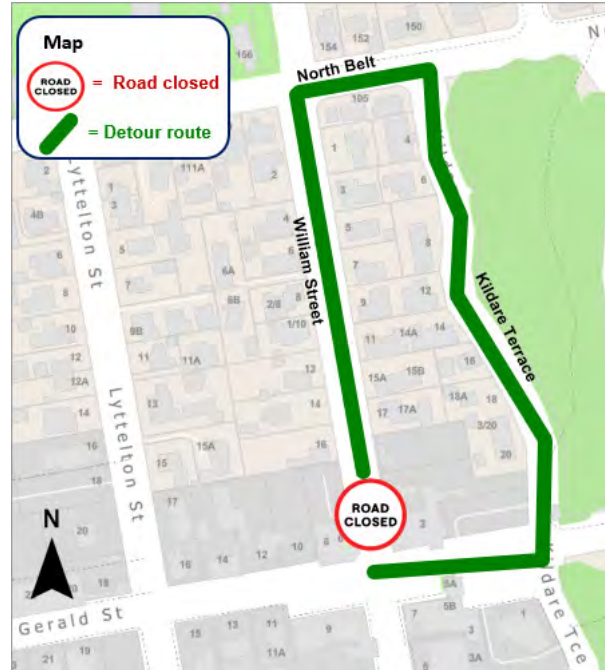
- 670m of 840m total of stormwater upgrades completed (the stormwater scope has increased by 244m from the original scope)
- 288m of 750m total of kerb and channel installed



## William Street temporary road closure

A temporary road closure will be in place at the William Street and Gerald Street intersection from Monday 2 March for one week, to allow safe installation of the new stormwater drainage.

Local residents and businesses in the area will receive a work notice with more detail on this. This traffic management layout is in addition to the existing traffic management in place in the Lincoln Town Centre.



Map of road closure and detour route for William Street temporary closure

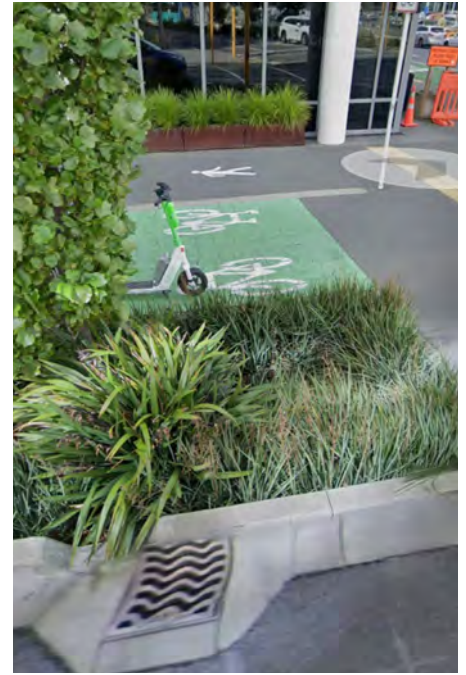
## Parking update

We want to make things as easy as possible for everyone who lives, works and visits here. One of the most common requests we've heard from the community was to relax parking enforcement during the works, so we are pleased to share that all public car parks in the Lincoln Town Centre are now available for all day parking for the duration of stage one.

By not enforcing the time limits it will give people more flexibility and make it simpler to get around while construction is underway. We hope this small temporary change helps ease some of the disruption and supports our local businesses by making it easier for customers to stay a little longer.



Map of car parks



**Modernising the stormwater**

Stormwater is what we call the rain that runs off roads, footpaths, roofs and driveways. It flows into gutters, through the stormwater network and then into streams, rivers and wetlands. Because it is not treated, anything it collects along the way such as litter, dirt, oil or other pollutants also enters our waterways.

What is changing in Lincoln:

As part of the town centre upgrade, the Lincoln Town Centre is receiving a new stormwater treatment system that cleans the water before it reaches local rivers. This is a new and important step for our community.

The system uses rain gardens placed along Gerald Street and nearby side streets. When it rains, water flows into these planted gardens where soil, plants and natural filtration help remove sediment and contaminants. Cleaner water then continues through the network and into our waterways.

The benefits:

Improving stormwater quality brings real environmental benefits such as:

- Cleaner waterways to support native plants, fish and birdlife
- Rain gardens reduce pollutants entering streams and rivers
- Natural filtration helps manage flooding during heavy rain

Greener streets make the town centre more attractive. Images of what the rain gardens looked like before they were installed, during installation and an example of how they can look once planting has been established (last image indicative only).

**Chat with Fulton Hogan**

Businesses and local residents are welcome to come and chat to Fulton Hogan in person.

- Where: 6/14 Gerald Street (next door to the Property Brokers)
- When: Drop in anytime between 11 am - 2 pm on a Tuesday or Thursday.

This is a great opportunity to ask questions, share feedback or just learn more about what is happening in your town centre.

If you can't make it during those times, call or email the Fulton Hogan team to ask questions or arrange a time that suits you better.

- Contact Fulton Hogan: 0800 ROAD FH (Monday–Friday, 8am–5pm) or [cant.info@fultonhogan.com](mailto:cant.info@fultonhogan.com)

Supporting Lincoln's growth from a rural township to a thriving town centre. We're future proofing our community with smart planning, plenty of safe parking and vibrant spaces where everyone can connect and thrive.



## KIM HILL HOT TOPIC - SOIL TO BRAIN

The popular “Hot Topic” discussion will take place on Thursday, March 26th, in the Stewart Building of Lincoln University from 6.30 pm.

As per tradition, the well-known Radio personality Kim Hill will lead a panel of experts who will discuss this year’s topic, “Soil to Brain”. Once the panel has deliberated on their various views, the audience will be invited to question the panel members.

This year, the expert panellists will examine how our relationship with soil and the means by which we grow our food might be affecting our mental health and general wellbeing. Also, the role of such things

as (ultra)processed foods, the use of antiseptics and antibiotics, dietary supplements, school lunches, and lab-grown food will be discussed and questioned.

The evening is always a stimulating and enjoyable occasion, and all are welcome. Food and refreshments are available.

More details and an invitation to register can be found at the link by visiting Humanitix ‘Kim Hill’; or actual link <https://events.humanitix.com/soil-to-brain> or Lincoln

Envirotown’s website or Facebook Page. We look forward to welcoming all who can attend.

**ELLESMERE LIONS PEA STRAW**

Help the Lions continue with their current fundraising projects. Small bales \$8 and medium bales at \$70. Price includes delivery in Lincoln and Selwyn District. Contact: Richard Boyce, phone 027 7141 324 or 325 2279 or Alex Hayward, phone 324 4094. Email [lionspeastraw02@gmail.com](mailto:lionspeastraw02@gmail.com) with name, address, telephone number and amount required.

**CARRS CHIMNEY CLEANING**  
 servicing Lincoln and surrounding areas

**\$90.00 a chimney**

phone Rodney on 033242999 and leave a message.



## REFRESHER COURSE FOR OLDER DRIVERS

### Stay Safe Behind the Wheel

When did you last have a refresher course for your driving? Have you kept up with changes to the road code? Do you know how aging can affect your driving? Or do you just want to check in to see if you're still the best driver you can be?

We all like to think we're safe behind the wheel, but sometimes we don't notice the risks around us.

New drivers might be more obvious, but even long-time drivers can become a little overconfident as habits and routines take over.

The Staying Safe Refresher Driver Course is a free, four-hour theory-based program run in collaboration with NZTA and the Police. It's designed to help older drivers check in on their skills, stay up to date with changes to the road code, and learn how age can affect driving. It's a practical, informative, and friendly way to make sure you're still the best driver you can be.

Last year's course at Lincoln saw an excellent turnout, with 44 participants enjoying the day.

Residents found it both useful and enjoyable, and we encourage anyone interested to book early — spaces can fill up quickly!

Comments from last year's refresher course held at CCL

- Very informative
- No matter how well we think we drive, there is always room for improvement
- Everybody should go on this course
- Excellent course
- Great refresher — a lot to think about on our busy roads
- My driving ability will benefit from this refresher course

Even driving around Lincoln can be more challenging these days, with new housing developments, increased traffic, changes to the main street, and the new Woolworths supermarket near Lincoln University. The course provides tips and strategies to help navigate these changes safely and confidently.

For more information or to book a place, contact Charlie Hudson at Age Concern Canterbury on 3317808 or email [chudson@ageconcerncan.org.nz](mailto:chudson@ageconcerncan.org.nz)

Don't miss out — book early to secure your spot!

Kind regards, Community Care Lincoln

Web: [www.lincolncomcare.co.nz](http://www.lincolncomcare.co.nz)

Facebook: [facebook.com/lincolncommunitycare](https://facebook.com/lincolncommunitycare)

Email: [admin@lincolncomcare.co.nz](mailto:admin@lincolncomcare.co.nz)



# OVER 60 YEARS OF COMBINED SELLING EXPERIENCE.

- ✔ \$12,500 <sup>+GST</sup> Flat Fee\*
- ✔ No Upfront Costs
- ✔ No Sale, No Fee



## Thinking of selling? We are here to help.

**Anna James**  
027 222 2742

**Dawn Pollard**  
022 073 7580

**Tracy Stevenson**  
027 543 9029

**Chelsea Palmer**  
021 0245 0395

**Helen Gilmore**  
027 503 9219

Arizto Ltd. Licensed REAA 2008 | \*Admin Fee + T&C's Apply

HOMES BY

# PARKLANE



## New Builds in Lincoln From \$729,000\*

At Homes by Parklane, we've been building quality homes across Canterbury for over 25 years, thoughtfully creating spaces where families thrive and communities grow.

Earlsbrook in Lincoln offers the perfect blend of peaceful living and modern convenience - surrounded by parks, great schools, cafés, and a welcoming community spirit.

### Why Build with us?

- New builds from \$729,000\*
- Contemporary designs with quality finishes
- Backed by a 10-Year Master Build Guarantee

### Let's discuss your dream home build:

James Maher - 029 201 2453

Ashish Sapra - 021 265 9394

[parklane.nz](http://parklane.nz)



\*T's & C's Apply



**NEW LINCOLN SHOW HOME COMING SOON!**  
STAY TUNED...

## STILL FORMS, MOVING LAND

Did you know there's an art gallery in Lincoln? Each month Down By The Liffey Gallery features a selection of talented artists in exciting exhibitions, showcasing local artists, emerging artists and community events with new displays every four weeks.

### Linda Burns

Based in Hoon Hay, Linda creates tactile ceramics inspired by nature. Her functional and sculptural pieces use organic textures and earthy tones to evoke the local landscape.



### Cakkie Lou

Geraldine artist Cakkie Lou paints expressive, metaphorical landscapes. Her atmospheric oil works explore the spiritual connection between humanity and the wild.



### Isabelle Wannenburg.

Lincoln-based Isabelle Wannenburg draws inspiration from Canterbury. Her textured oil paintings capture the region's dynamic light and the rugged beauty of the South Island.



## UPCOMING LINCOLN ENVIROTOWN EVENTS

It has been a busy season of growth for the Lincoln Envirotown Trust! We are thrilled to share our upcoming lineup of workshops and discussions that reflect our commitment to a sustainable future. Whether you are a local business owner or a curious resident, these events offer a space to learn, share ideas, and celebrate our unique local environment together. You can view tickets for all these initiatives by **searching Lincoln Envirotown on Humanitix**



### All About Bees

**10.30am – 11.30am, Saturday 7th March**  
**@Lincoln Envirotown Community Gardens**

Buzz along to hear all about bees and beekeeping. Lesley Hurst from Bee Awesome He Pi Miharo will show us some simple ideas we can use to help the bees, and the basics of getting started in beekeeping.

*Gold coin donation appreciated.*



### Basic Bonsai Techniques

**9.30am – 1.30pm, Saturday 21st March**  
**@ Lincoln Baptist Church**

Basic Bonsai Techniques is an introductory workshop for beginners presented by Tony Bywater, Christchurch Bonsai Society. The registration fee of \$25 covers the cost of the tree to take home, potting mix, grow bags, wire, and morning tea.

*\$25, booking essential*



### Mahoe Mini Bioblitz

**2pm – 4pm, Sunday 26th April**  
**@Mahoe Reserve, Boundary Road, Lincoln**

Join Canterbury Museum for a Mini Bioblitz at the Mahoe Native Reserve in Lincoln as part of the City Nature Challenge Ōtautahi. You'll be on the hunt for anything that flies, grows, crawls and hides! We need your help to find and record all the amazing plants and creatures that call Mahoe home! Free family event. See Humanitix for full details.



### Selwyn Trap Library

**10am - 12pm, Saturday 28th March**  
**@ Lincoln Farmers & Craft Market**

Come and see us for free trap hire and advice. We will lend you the right type of trap to remove pests like rats, hedgehogs, possums, and stoats. We can also advise you on bait and the best location for your trap. The library is usually open on the last Saturday of every month. Contact [selwyntraplibrary@gmail.com](mailto:selwyntraplibrary@gmail.com).

## FEATURED EVENTS



### Selwyn Sounds 2026

10:00am – 8:30pm, Saturday 7 March  
@ Lincoln Domain

Canterbury’s biggest outdoor music festival returns. Enjoy an incredible day of live music with a massive lineup including Ronan Keating, Tony Hadley (ex-Spandau Ballet), Mi-Sex, and Kiwi legends When The Cat’s Away and Opshop. Grab your picnic blanket and soak up the atmosphere with world-class production and a huge range of international food trucks.



### Harvest Festival

10:00am – 3:00pm, Saturday 14 March  
@ Rolleston Town Centre (Greenspace behind Te Ara Ātea)

Celebrate the best of the region’s food and community spirit. This free family event features a massive Farmers’ Market with local producers, live music, and farmyard animals. Don’t miss the annual Scarecrow Competition, hay bale maze, and pony rides for the kids while you sample the finest local wines and eateries.



### Shaping Selwyn Session

4:00pm – 5:30pm, Tuesday 24 March  
@ Stewart Lecture Theatre, Lincoln University

Join Mayor Lydia Gliddon for an engaging session on the choices shaping our district’s future. This talk focuses on the complex balance between rapid urban expansion, economic growth, and environmental stewardship. It’s a vital opportunity to hear how evidence-led planning is being used to foster resilient communities in one of Aotearoa’s fastest-growing regions.

## AROUND YOU



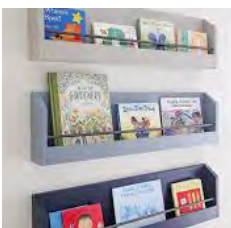
### Poetry Writing Workshop

6:30pm – 8:00pm  
Saturday 14 March  
@Lincoln Library



### Karma Keg with Lincoln Tennis Club

2:00pm – 4:00pm  
Saturday 28 March  
@The Laboratory



### Children’s Book Club

3:30pm – 4:30pm  
Tuesday 17 March  
@Lincoln Library



### Easter Craft

3:30pm – 4:30pm  
Thursday 2 April  
@ Lincoln Event Centre



## MUSIC AT THE LABORATORY

Our Sunday Music Sessions run every Sunday from 3- 5pm

- Sun 1 Mar – Dave & Mark
- Sun 8 Mar – Jack Thomson
- Sun 15 Mar – Fly by Night
- Sun 22 Mar – The Bends
- Sun 29 Mar – Matt Hantler

Come on down and enjoy the good food, good brews and good tunes!



## Down By The Liffey Gallery

Opening hours: 11.30am – 2.30pm Thursday  
10am – 4pm Friday to Sunday  
Down By The Liffey Gallery, 1 James St, Lincoln

This month's exhibition is 'Still Forms, Moving Land' bringing together works by Linda Burns, Cakkie Lou and Isabelle Wannenburg. Across painting and sculpture, these artists explore landscapes and form through abstraction, metaphor and carefully resolved sculptural works. These artists bring together a beautiful exhibition that you don't want to miss.

Mar 12 - Apr 5



## Join our community meeting

7pm, Monday 9th March  
Community Care



## Private Cinema Hire



Fancy having our intimate 15-seat cinema all to yourself?  
Kids parties - Birthday celebrations - Family & friends gatherings - Corporate Functions - Community get-togethers - Any old reason at all - From only \$195

Pop in & see us or email [goodparties@thelaboratory.co.nz](mailto:goodparties@thelaboratory.co.nz)

## APOLLO CINEMA

Our wee cinema is brimming with new releases, alongside some favourites still showing on the big screen — including EPiC: Elvis Presley in Concert, Fackham Hall, Wuthering Heights, and many more!

With the April school holidays just around the corner, we're also excited to welcome lots of family-friendly films to the line up. Thank you for continuing to fill our seats and share the movie magic — we look forward to seeing you at The Apollo soon.



### Holy Days

Comedy / Showing Now

A hilarious, heart warming 1970's Kiwi dramedy from the team behind Uproar. When young Brian sets out to save a convent of delightfully eccentric nuns, chaos and charm follow. A joyful road trip brimming with laughs, lovable characters, and plenty of heart!



### Project Hail Mary

Action / 19 Mar

Science teacher Ryland Grace (Ryan Gosling) wakes up alone on a spaceship, light years from home, with no memory of who he is or why he's there. As the truth unfolds, he must solve the mystery threatening Earth and discovers an unexpected friendship along the way.



### Hoppers

Adventure / 26 Mar

Scientists have figured out how to “hop” human minds into adorable robotic animals so people can chat with animals as animals! When Mabel gives it a go, she discovers a whole wild world of secrets, silliness, and surprises she never expected.



### I Swear

Drama / 26 Mar

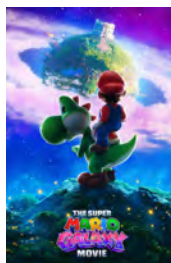
This true story follows Tourette Syndrome campaigner John Davidson in 1980s Britain. Misunderstood and alienated by society, John fights to live a “normal” life against the odds, finding unexpected champions along the way.



### The Magic Faraway Tree

Adventure / 26 Mar

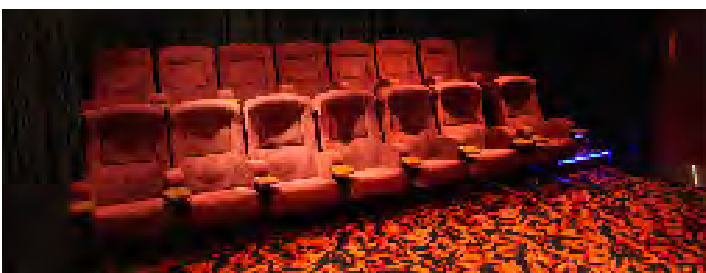
A modern family moves to the quiet English countryside, where the children discover a magical tree and its eccentric residents. Alongside Moonface, Silky, and Saucepan Man, they journey to fantastical lands, using these adventures to reconnect and bond as a family.



### The Super Mario Galaxy Movie

Adventure / 2 Apr

Mario's off the map — and into space! Join him as he explores cosmic worlds, takes on galactic challenges, and leaves the Mushroom Kingdom far behind.



APOLLO  
LINCOLN  
THE LABORATORY - 17 WEST BELT - LINCOLN  
apollo.thelaboratory.co.nz

**For all your home  
Maintenance and Repairs**



**SELWYN BUILDING  
& MAINTENANCE**

**Phone Shane 0224035450**



## USEFUL CONTACTS

Art Group of Lincoln	Faye 347 3399
Community Garden	021 074 3905
Death Café Lincoln	020 425 0369
Down by the Liffey Gallery	325 2877
Ellesmere Badminton Club	027 325 2044
Ellesmere Indoor Bowls	325 3143
Ellesmere Probus Club	325 6165
Junior Enviro Action Group	027 307 0767
Kaituna Golf Course	027 477 9425
Liffey Toastmasters	027 955 7996
Lincoln Badminton Club	347 9707
Lincoln Bowling Club	325 2289
Lincoln Bridge Club	325 3222
Lincoln Business Assn	325 2039
Lincoln Community Care	325 2007
Lincoln Cricket Club	029 240 0093
Lincoln & Districts Historical Soc.	325 3320
Lincoln Envirotown	329 5858
Lincoln Farmers Market	329 5757
Lincoln Girl Guides	027 462 8871
Lincoln Golf Club	325 2453
Lincoln ICONZ	347 8722
Lincoln Indoor Bowls	347 3212
Lincoln Masonic Lodge	349 9905
Lincoln Men's Shed	linolnmensshed@gmail.com
Lincoln Netball Club	lincolnnetballsecretary@gmail.com
Lincoln Outdoor Bowls	325 2289
Lincoln Patchwork and Quilting	021 129 2833
Lincoln Plunket	325 2179
Lincoln Rugby Club	027 303 1879
Lincoln Scottish Dance Club	3497126
Lincoln Scouts	021 258 5680 (text)
Lincoln Table Tennis Club	325 7694
Lincoln Tennis Club	lincolntennisnz@gmail.com
Mother4Mother	357 4970
Rotary Club of Lincoln	029 999 8330
Selwyn Lions	325 7957
Selwyn Parenting Network	021 166 8603
Selwyn Printing Co.	741 3049
Senior Citizens Club	027 712 7195
SeniorNet	027 547 4793
Spinning/Knitting Group	325 3320
Springs Day Club	329 5634
Springston Evening Garden Club	344 5781
Springston Garden Club (daytime)	325 5002
St Patricks Craft and Friendship Group	027 334 1151
Tai Tapu Garden Club	329 6268
Time Banking	423 0456
Toy Library	021 044 2407
U3A Ellesmere	028 415 4961
Community Dental	0800 846 983
Healthline	0800 611 116
Lincoln Comm. Response	325 7732
Lincoln Library	347 2876
Lincoln Police	378 0160
Lincoln Fire Station	325 2801
Nurse Maude	375 4200
Selwyn Community Patrol	info@selwyncommunitypatrol.org.nz

**WE NOW SUPPLY  
A RANGE OF  
BICYCLE  
TYRES, TUBES &  
ACCESSORIES**

**BRIDGESTONE** **TYRE CENTRE**  
**LINCOLN**

📍 23 Gerald Street, Lincoln

☎ 03 325 2129 🌐 fb.com/bridgestonelincoln