

# Lincoln Local

Lincoln community newsletter

April 2026



Lincoln Town Centre Update  
Page 4

Selwyn Monopoly  
Page 7

Anzac Day Commemorations  
Page 18

Thank you to our sponsors



## WELCOME TO OUR APRIL ISSUE

April is here already with busy 2026 agendas for everyone. The nagging annoyance for everybody will be the town centre upgrade. Unfortunately, the poor summer weather has had an effect on the construction with an extension of the work program being signalled. Completion is now projected to be September. While you as a resident may well be frustrated, the effected businesses are suffering major financial pressure. As stated previously it's vitally important that we support these local businesses. It is critical to their survival. What is helping is the improved access to parking and the improved pedestrian access especially from the northern carpark with a gap in the fence. This allows access to Gerald St past the Lincoln Family Barber and is open during business hours. We all need to be patient with the inconvenience and look forward to the end result.

As a minor part of the upgrade the council is pledging that flag tracks will be installed on every light-pole. This committee as well as the Christmas Parade have been promoting this and will be looking at purchasing new flags. Look forward to seeing flags up along both sides of the main street.

The Selwyn District Councils 2026-2027 Draft Annual Plan was finalised on the 18th March and is now out for a six-week consultation period. Submissions close on 26th April. Details can be found at [www.selwyn.govt.nz/annualplan](http://www.selwyn.govt.nz/annualplan). Council is looking forward to a large amount of feedback that will guide decision making.

**There will opportunities for people to be informed and have their say with the Mayor, Deputy mayor and various Councillors at the following event following the issuing of this newsletter:**

- 1: Lincoln Market, 18th April, 9.30am – 12.30pm
- 2: Casual 'coffee catchups' with Cr Carrick at;
  - The Good Home, Prebbleton, 9th April 4pm – 5pm
  - The Cottage Cafe, Lincoln, 23rd April 1.30pm – 2.30pm

As stated last month, our newsletter will soon cease to be delivered to letter boxes. It has been determined that this is not sustainable so from May it will only be available in special stands at specific locations such as the library, New World, Challenge service station, Community Care, and others to be confirmed. It will also be available to read digitally on our website.

### LCRA Membership

We are continuing a campaign to attract more membership. The town deserves an active community association but it needs people to drive it. We are in particular need of secretarial help either by volunteering or perhaps another arrangement. We are open to suggestions so if you have some skills and are that way inclined, please contact us.

We have also created a two-level membership structure comprised of COMMITTEE members and 'THE FRIENDS OF LINCOLN' (general membership). 'The Friends of Lincoln' has been created for those concerned about our community and want to be kept informed but are too busy for more commitment. If you are interested, please email us [lincolnresidentsinc@gmail.com](mailto:lincolnresidentsinc@gmail.com) or contact us through the website ([www.lincolncommunity.co.nz](http://www.lincolncommunity.co.nz)).

All the best from LCRA.

**Lindsay Wilson**  
Chairperson

### Other Committee Members

Andre Strauss (Deputy Chair)  
Tanya Douglas (Treasurer/Secretary)  
Kathryn Claridge, Ralph Scott, Neale Elder, Mark Song

Contact us by email: [lincolnresidentsinc@gmail.com](mailto:lincolnresidentsinc@gmail.com) or the website: [lincolncommunity.co.nz](http://lincolncommunity.co.nz)

Lincoln Local is produced by:

**Lincoln's trusted  
real estate advisor**

[sha@officeroad.co.nz](mailto:sha@officeroad.co.nz)  
0273753670

Sha Jega  
Real Estate Advisor



## Shape our community.



Join our monthly meeting.

- Featuring an elected councillor.
- Voice concerns.
- Make suggestions.

7pm, Monday 13th April  
Community Care

All welcome.

# Consultation is now open for Selwyn's Annual Plan

**Find out what Council has proposed, how it could help ease pressure on household rates, and what it means for you.**

Your feedback helps shape our priorities. Submissions close Sunday 26 April.

[selwyn.govt.nz/annualplan](http://selwyn.govt.nz/annualplan)

Āu Kōrero mō Waikirikiri  
**Your Say Selwyn**



**Official newsletter of the Lincoln Community and Resident's Association  
April 2026**

CONTACT US  
[editor@lincolncommunity.co.nz](mailto:editor@lincolncommunity.co.nz)  
[lincolncommunity.co.nz](http://lincolncommunity.co.nz)

### CONTRIBUTORS

Lindsay Wilson (LCRA), Bridie Frost (Selwyn Youth Council), Ruth Wood (Lincoln Envirotown), Emily Beaufoy (Dancing Through the Decades), Maree Parr (Selwyn Symphonic Bandits), Kerry Thomason (Lincoln Senior Citizens), Agnes Owusu (feature writer), Selwyn District Council, Mike Noonan (Community Care).

# LINCOLN TOWN CENTRE: PROGRESS TO DATE

@ 25 March 2026

We're pleased to share that we are now finishing up the last of the underground drainage works in the Lincoln Town Centre. This marks a significant milestone in the project and means we are moving into the next, more visible phase of construction.

As works progress above ground, you'll start to see more of the beautification elements taking shape. This includes the installation of new kerbs and paving, as well as preparation works ahead of the upcoming roading improvements. These changes will play a key role in improving the look, feel and functionality of the town centre for everyone.

Due to the scale and complexity of the roading works, there will still be a need for considerable traffic management in place. This is essential to ensure the safety of pedestrians, cyclists, motorists and our construction crews while work continues.

Where possible, we will continue to combine works to minimise disruption and keep the project moving efficiently. We appreciate the patience and cooperation of our community as we move through this next stage and look forward to delivering a refreshed and welcoming Lincoln Town Centre.

- Kerbs are now 780m complete of 1433m total for the project
- Drainage works will be 100% complete by Friday 27 March
- Paver Installation is 355m complete of 2650m total



### Lyttelton Street road closure extension

To allow additional improvements to be completed at the same time, the temporary road closure on Lyttelton Street (at the intersection with Gerald Street) has been extended until Thursday 24 April 2026.

By completing milling and asphalt paving together in one coordinated stage, this approach helps avoid the need for further closures later and reduces overall disruption for our community. What this means for you:

- No vehicle access will be available between Lyttelton Street and Gerald Street during this time
- Please follow the signposted detours via North Belt and William Street
- Footpath access will remain open, and access to properties and businesses will continue
- A temporary 30km/h speed limit is in place to keep everyone safe

Most work will take place Monday to Friday between 7am and 7pm, with some Saturday or night work if required. While there will be some construction noise, measures are in place to keep disruption to a minimum.

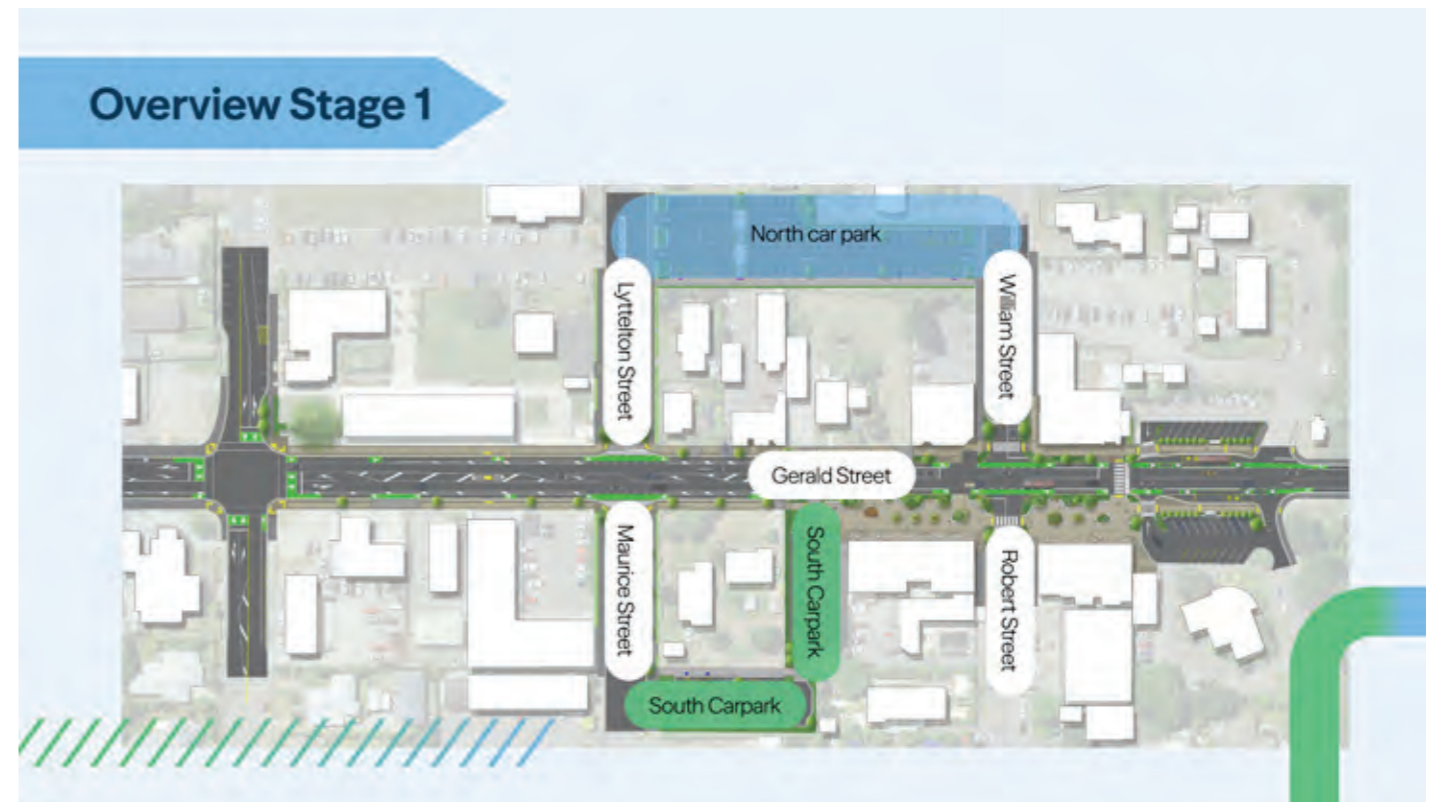
We encourage everyone travelling through the area to allow a little extra time, take care around the works, and follow onsite signage. Friendly staff will be available on site to help with any questions.

Thank you for your patience and understanding.

Please contact Fulton Hogan on **0800 7623 34** (0800 ROAD FH), Monday to Friday, 8am – 5pm, or email [cant.info@fultonhogan.com](mailto:cant.info@fultonhogan.com).

Urgent matters outside these hours can also be reported via this number.

New pavers on Gerald Street



### Chat with Fulton Hogan

Businesses and local residents are welcome to come and chat to Fulton Hogan in person.

- Where: 6/14 Gerald Street (next door to the Property Brokers)
- When: Drop in anytime between 11am – 2pm on a Tuesday or Thursday.

This is a great opportunity to ask questions, share feedback or just learn more about what is happening in your town centre.

If you can't make it during those times, call or email the Fulton Hogan team to ask questions or arrange a time that suits you better.

- Contact Fulton Hogan: 0800 ROAD FH (Monday – Friday, 8am – 5pm) or [cant.info@fultonhogan.com](mailto:cant.info@fultonhogan.com)

Supporting Lincoln's growth from a rural township to a thriving town centre. We're future proofing our community with smart planning, plenty of safe parking and vibrant spaces where everyone can connect and thrive.

### Stay updated

You can stay updated by visiting the Selwyn District Council Website and Facebook page.

If you have any questions, please email [lincolntcplan@selwyn.govt.nz](mailto:lincolntcplan@selwyn.govt.nz).

**Stages** The Lincoln Town Centre upgrade will happen in four stages.

**Key**  
■ Stage one ■ Stage two ■ Stage three ■ Stage four

**The Lincoln Town Centre Upgrade will be delivered in four stages to support Lincoln's growth and ensure works are carried out safely and efficiently.**

**We are currently in Stage One. Stage One focuses on upgrading Gerald Street between Kildare Terrace and West Belt, marking an important first step in future-proofing the town centre.**

**Stage One is focused on:**

- 124 new car parks (69 in the Northern carpark, and 47 in the Southern carpark), completed in August 2025
- Slow speed zone, safer for traffic, pedestrians and cyclists
- Adding cycle lanes
- New Gerald Street plaza to bring community together, more accessible for pedestrians
- Multiple pedestrian crossings.



## MARCH HIGHLIGHTS FROM AROUND THE DISTRICT

Selwyn's agricultural excellence was celebrated with the second annual Selwyn Harvest Festival. Over 12,000 people enjoyed the event on Saturday 14th March at Rolleston Town Centre.

Selwyn produces some of the finest food in the country and it brought together over 30 of Selwyn's top food producers, to showcase their products to residents at a vibrant farmers' market on the green space behind Te Ara Ātea. With the growing interest in paddock to plate eating, it was a fantastic opportunity for those businesses to showcase their products.

Alongside the marketplace, visitors enjoyed live music, community garden displays and family-friendly activities, along with the first ever scarecrow building competition!



## LOCAL VOICES SHAPING SELWYN'S OWN MONOPOLY EDITION

The Selwyn Youth Council has teamed up with global toy company Hasbro to create a unique Monopoly: Selwyn Edition, putting the district firmly on the board—literally.

The project aims to celebrate local identity, with all four Selwyn high schools set to feature as key properties on the board. In an inclusive move, every primary school across the district has been invited to appear on either Community Chest or Chance cards, ensuring young people from every corner of Selwyn see themselves represented.

Beyond the novelty, the initiative also brings real benefits to schools. Each participating school will have the opportunity to use the game as a fundraising tool when it launches later this year, creating a fun and engaging way to support school communities.

Over the summer months, Youth Council members, including Kiki the Kea (the Selwyn Youth Council mascot), have been out and about at community events, speaking with residents to gather ideas on what landmarks and local favourites should be included. From events and eateries to iconic Selwyn spots, the final board will reflect what the community values most.

"This is about creating something that truly represents Selwyn," a Youth Council spokesperson said. "We want people to feel proud when they play it."

Local businesses and organisations can also get involved, with sponsorship opportunities now open. Those interested can contact the Youth Council via email at [youth.council@selwyn.govt.nz](mailto:youth.council@selwyn.govt.nz) or through Facebook at Selwyn Youth.

The game is expected to launch later this year, bringing a distinctly local twist to a classic favourite.



Aged Concern Staying Safe driver refresher course

# COMMUNITY CARE LINCOLN'S (CCL) NEW LOOK

Recently Community Care Lincoln (CCL) has had its website upgraded. It was decided to see how Artificial Intelligence (AI) would take the information from the site when Gemini (AI) was asked to write about the services that CCL provides and comment on a driver refresher course that is being run in April. The response is presented in italics below. Also pictures can be generated by AI (Nano Banana Pro in this case) and you can compare what AI generated with actual CCL photos. Stay safe behind the wheel.

***Driving confidence and connection: How Community Care Lincoln supports our seniors***

*In the heart of the Selwyn district, independence is everything. For our older residents, the ability to stay connected to friends, attend medical appointments, and navigate our changing roads is key to a vibrant life. This is where Community Care Lincoln (Lincoln and Districts Community Care Association) steps in, serving as a vital lifeline for the community.*

*Far more than just a service provider, Community Care Lincoln is a neighbor helping neighbor. Their dedicated team of volunteers ensures that no one in our district needs to feel isolated. Whether it is coordinating transport for a hospital visit in Christchurch or simply providing a friendly face for a chat, they bridge the gap between necessity and comfort. Their services range from equipment hire to social gatherings, all designed to keep our seniors active and engaged.*

***Staying safe on the road***

*One of the most significant challenges for older residents is maintaining confidence behind the wheel as traffic volumes increase and road layouts change. Recognizing this, Community Care Lincoln has arranged a special Driver Refresher Seminar to be run by Age Concern.*

*This isn't a test—it's a confidence booster. The seminar is designed to help experienced drivers brush up on the latest road rules, navigate tricky intersections*

*(we all know roundabouts can be a headache!), and learn defensive driving techniques suited for modern traffic conditions. It is a fantastic opportunity to ask questions in a relaxed, supportive environment and ensure that you—or your loved ones—remain safe and mobile for as long as possible.*

***Get involved***

Community Care Lincoln thrives on the spirit of our district. Whether you need support, want to attend the driving seminar, or have a few hours to spare as a volunteer, they would love to hear from you. Let's keep Lincoln moving, together.

**The Age Concern 'Staying Safe' driver refresher course is being held on Monday 20 April 2026 from 10am – 2pm at CCL, 16 Lyttelton Street, Lincoln.**

For more information on the Driver Refresher Seminar or other services, please contact the Community Care Lincoln office.

Kind regards

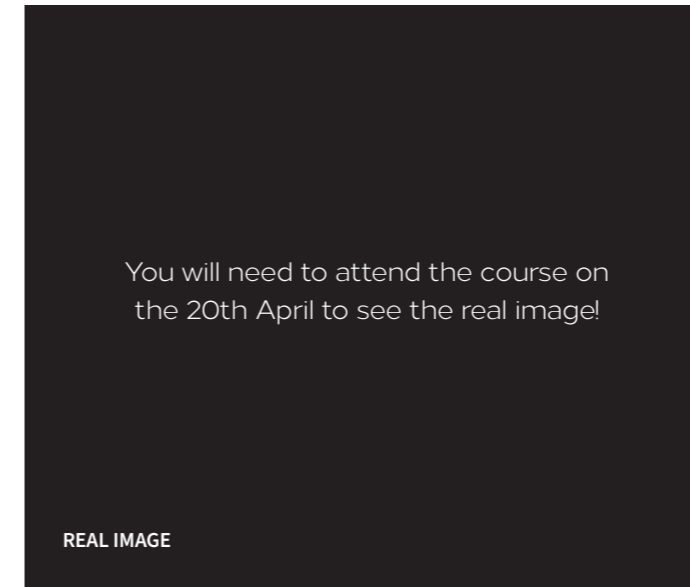
**Community Care Lincoln**

Web: [www.lincolncomcare.co.nz](http://www.lincolncomcare.co.nz)

Facebook: [facebook.com/lincolncommunitycare](https://facebook.com/lincolncommunitycare)

Email: [admin@lincolncomcare.co.nz](mailto:admin@lincolncomcare.co.nz)

Phone: (03) 325 2007



You will need to attend the course on the 20th April to see the real image!

REAL IMAGE



AI GENERATED IMAGE

**Tuesday Friendship Club**



REAL IMAGE



AI GENERATED IMAGE

**Meals-on-Wheels Delivery**



REAL IMAGE



AI GENERATED IMAGE



## LINCOLN ENVIROTOWN COMMUNITY GARDENS

I am sorry to report that a stalwart of our Community Gardens, Keith Dickson, died last month after a short illness. Keith became associated with us in 2011, and for every year until 2021 he conducted a workshop on pip-fruit production on Saturday mornings. With a lifetime of experience in horticulture, including managing the large Applefields orchard at Broadfield, Keith willingly shared his expertise. His workshops included tree selection, grafting, pruning for production, and dealing with the common problems encountered with apples and pear trees. His first workshop attracted around 70 participants, and subsequent workshops continued to be our most popular. Eventually, because of age, Keith had to cease running the workshops. However, he continued to be involved as a mentor, and he called in regularly to check on the state of our trees. Keith's mantra was "you can't control an apple tree by pruning; it needs to be controlled by production." He maintained that too heavy pruning only encourages the rampant growth of shoots and leaves, at the expense of fruit.

For the last few years, we have hosted a productive beehive. This has been supplied and maintained by Bee Awesome, whose mission is to educate the community, especially young people, "all about bees". Lesley Hurst, a Bee Awesome educator conducted a workshop on

14th March. The children who attended were provided with protective clothing so that they could get up close to the hive as Lesley dismantled it. Lesley said that the honey production this season was good, after the disappointment of all the bees suddenly leaving the hive last spring. Lesley demonstrated a smoker which is used to calm bees during hive inspections. When smoked, the bees prepare to leave the hive because they think it is on fire. This emergency stimulates them to eat lots of honey and they become docile, so they are less likely to sting. Lesley adds thyme and lavender or rosemary to the smoker because these are natural essences which keeps the bugs away.

**Ruth Wood**  
Coordinator, Lincoln Envirotown Community Gardens

*Images from top left clockwise:  
Keith Dickson sharing his expertise.*

*We recently hosted a lunchtime visit of the Gardening Interest Group from U3A Ellesmere.*

*Our productive beehive.*

*We believe in buying our supplies from local suppliers and encourage others to do the same. Hammer Hardware has been a longtime supporter of the Community Gardens, and recently Manny generously gifted us a wide range of gardening products.*

## CITY NATURE CHALLENGE ŌTAUTAHI



As part of the City Nature Challenge Ōtautahi, Lincoln Envirotown Trust are planning another Mini BioBlitz in the Mahoe Native Reserve in Lincoln on Sunday 26th April.

This challenge takes place globally as people all over the world look to see the diversity of life in our local areas. We welcome nature enthusiasts of all ages to this free event, where you will identify species found in the reserve and upload your observations to iNaturalist.NZ. We'll be on the hunt for anything that flies, grows, crawls and hides!

We are very grateful to Canterbury Museum's team, who will be helping everyone with identifying species, showing their collected species on the big screen and using the iNaturalist app to report all our findings. This free event was very successful last year, and we look forward to another enjoyable afternoon. *See details below.*



### Selwyn Trap Library

10 am – 12 pm, Saturday 25 April  
@ Lincoln Farmers & Craft Market

Come and see us for free trap hire and advice. We will lend you the right type of trap to remove pests like rats, hedgehogs, possums, and stoats. We can also advise you on bait and the best location for your trap. The library is usually open on the last Saturday of every month.

*Free family event. See Humanitix for full details.*



### Mahoe Mini Bioblitz

2pm – 4pm, Sunday 26 April  
@ Mahoe Reserve, Boundary Road, Lincoln

Join Canterbury Museum for a Mini Bioblitz at the Mahoe Native Reserve in Lincoln as part of the City Nature Challenge Ōtautahi. You'll be on the hunt for anything that flies, grows, crawls and hides! We need your help to find and record all the amazing plants and creatures that call Mahoe home!

*Free family event. See Humanitix for full details or call Dave 03 423 0445.*

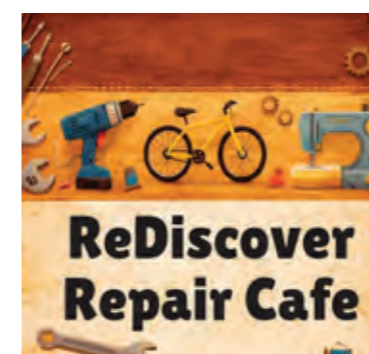


### Basic Bonsai Refresher Workshop

9.30am – 1.30pm, Saturday 2 May  
@ Lincoln Baptist Church

If you have already done a beginner's workshop, or have some bonsai of your own at home, here is a chance to get further input into the styling and care of your trees. Trees provided or bring one or more of your trees along for advice and assistance.

*\$25, booking essential. Contact Ruth Wood, ruth.wood@xtra.co.nz, 021 074 3905.*



### ReDiscover Repair Café

10am – 1pm, Saturday 23 May  
@ Pines Resource Recovery Park

We are planning to fix: Bikes, Clothing, Electronics, Jewellery, Household Appliances and Knife Sharpening.

*Free community event. See Humanitix for full details.*



## LINCOLN STUDENT STEPS UP FOR LIFE-CHANGING NEPAL EXPEDITION

Lincoln High School student Emily is on a mission, one that stretches far beyond the classroom and all the way to the Himalayas of Nepal.

Selected in October 2025 for a once-in-a-lifetime Student Leadership Expedition with Unearthed Education, Emily will travel to Nepal this November as part of a transformative programme designed to build real-world leadership skills through immersive experience. Unlike traditional learning, these expeditions place students in unfamiliar environments where they must collaborate, problem-solve, and take on active leadership roles within a team.

During the journey, Emily and her group will complete an eight-day trek through the Himalayas, spend time in the Langtang Valley, and visit both Kathmandu and Pokhara, offering a powerful contrast between rural and urban life. They will also contribute to community work in a local school, gaining firsthand insight into different cultures and ways of life.

To make the trip possible, Emily has been working tirelessly to raise the \$12,000+ required. So far, she has raised \$4,500 through a Givealittle page, market stalls, babysitting, and long hours working at events including



the Canterbury A&P Show, Selwyn Sounds, and the Selwyn Fireworks Spectacular. She also organised a successful quiz night at The Bridge Bar & Restaurant.

Her next major fundraiser, a dance fitness party class at the Lincoln Events Centre on 9th May, will bring together eight local instructors in a vibrant community effort.

Emily says, "I've been incredibly humbled by the support of businesses, friends, and family, it truly means more than I can say. This journey to Nepal is not just about the trip in November, but about every step of the path leading up to it. I'm also looking forward to coming home and turning what I've learned and experienced into something meaningful, creating positive change beyond the journey itself."

Those wishing to follow Emily's journey or support her fundraising efforts can find updates on her Facebook page, Emily's Nepal Challenge 2026.

## GET READY TO MOVE, GROOVE AND GIVE BACK!

Join me for an unforgettable evening of fun, fitness, and community spirit at the 'Dancing Through The Decades' dance fitness party class fundraiser! Our amazing local Zumba® and dance fitness instructors will bring the energy, the music, and the moves from some of your favorite decades, think roaring 20s, fabulous 60s, 90s house, and more. Dance to throwback hits that will have you smiling and moving all night long.

Choose your decade to celebrate, and dress up (if you like)—because there's a prize for the best dressed! Plus, we'll have a raffle on the night with local prizes up for grabs.

This isn't just a dance class; it's a chance to come together, have a blast, and make a positive difference in our community and beyond! So grab your friends and let's pack the room!

All profits from the night will be shared between my Nepal fundraising mission and a generous donation to Youthline, which provides vital support to young people across New Zealand. Youthline offers free helplines, counselling, mentoring, and mental health support to youth who may have nowhere else to turn.

"I'm incredibly grateful to our wonderful local Zumba® and dance fitness instructors who are generously volunteering their time and talents to make this event happen."

- Justine from ZUMBA HAPPY WITH JUSTINE
- Alec & Jane from AJ ZUMBA
- Marcia from ZUMBATASTIC FITNESS WITH MARCIA
- Evonne from RTD VONFIT DANCE FUN
- Gillian and crew from DANCE FITNESS CHRISTCHURCH
- Michelle from ZUMBA DANCE FITNESS WITH MICHELLE
- Sarah Summers from WEST MELTON

Many thanks  
Emily

### Dancing through the Decades

6.30pm – 8pm (door open 5.45pm), Saturday 9th May @ Lincoln Event Centre.

120 tickets only: Tickets \$15 + door sales \$20 (if not sold out).

For tickets email: emilysnepalfundraising@gmail.com



## ZUMBA® HAPPY with Justine

WE ARE YOUR LOCAL COMMUNITY ZUMBA® GROUP

- No joining or membership fee
- No need to book
- Runs through the year
- Great group of local people
- Zumba® Fitness
- Zumba® Toning
- Zumba® Gold

6.15pm Tuesday, Zumba Gold, LPS Hall  
9.30am Friday, Zumba Gold, LEC  
8.45am Saturday, Zumba Fitness, LPS Hall  
\$5 first class, 2nd class free, Casual or concessions thereafter.

FITNESS • FUN • FRIENDSHIP  
zumbahappywithjustine



# THE AUTUMN MARKET IS IN FULL SWING, NOW IS THE IDEAL TIME TO MAKE YOUR MOVE.

Discover what's on the market with one of our team!

Contact us today for a free, no-obligation appraisal of your home and discover its true market value.



Tarcille Roffey, Ross Mitchell, Rachael McIntosh, Jeremy Andrews, Deepti Malik, Matthew Hale, Julian Twiss, Dane Petheram, Jan Green

**Harcourts** Four Seasons Realty

Lincoln Office | 03 662 9933 | lincoln@harcourts.co.nz

Licensed Agent 16/01/2024



DR FLEUR HARRIS

## CHILDREN'S SPEECH & LANGUAGE THERAPIST



*"I empower parents to nurture their child's learning. I am passionate about cultivating children's learning for life."*

Are you wondering about your child's speech and language development? I have 43 years experience and am based right here in Lincoln. Contact me for a chat in a local café, free of charge.

Dr. Fleur Harris PhD • 027 498 8355  
info@nzwordtrees.com • www.nzwordtrees.com

JOIN THE **SELWYN SYMPHONIC BANDITS**

A Concert Band for Proficient Musicians Who Read Music & Play an Instrument

This band caters for students and adults in the Selwyn community who are keen to play a variety of music.

Rehearsals Friday 5.30-7pm  
Contact: school.band.chch@gmail.com  
Ph 027 658 7177



## HANKERING TO PLAY MUSIC AGAIN?

Are you hankering to play music again after a break from your instrument? Are you keen to join a fun and non competitive group of good musicians?

The Selwyn Symphonic Bandits is a local wind band primarily for proficient musicians who like to play a wide variety of music in a friendly and encouraging environment.

The band has grown out of the highly successful band programme based at Lincoln Primary School for the past eight years.

Lincoln Primary School is the base for other bands that include a beginner band with 45 students, a 50 piece concert band, a full size jazz band and two rock bands. The advanced musicians from this programme who move to various high schools, feed into the 'Bandits'.

Catering for advanced school students as well as adults from the district, the Bandits rehearse in the Lincoln Primary School hall on Fridays 5.30-7pm. It is led by Serge Beaton and various guest conductors.

Anyone who is interested to dust off their instrument is welcome to come along and sit in to see if they enjoy the experience.



There is always a seat for keen musicians. The band has music for flute, oboe, clarinet, bass clarinet, saxophone, bassoon, french horn, trumpet, trombone, tuba, baritone, bass guitar and percussion.

If you're interested feel free to contact Maree  
Email: school.band.chch@gmail.com  
Phone: 027 658 7177

*The band plays at local concerts, competitions and events.*

## LINCOLN SENIOR CITIZENS

On the 3rd of March there was a great turnout of our wonderful Lincoln Senior Citizen members at the Lincoln Events Centre for our Annual General Meeting. All of your 25/26 hard working officers and committee members had offered their services for another year. Clearly every one was very happy with their time and efforts to organise and run all the activities we have enjoyed, as they were all re elected to their positions. It does take a lot of time to communicate, manage and run things so well, so a big thanks TEAM and a very well done as our membership continues to grow. It is very rewarding to see so many new faces joining us, welcome to all. We then had a good general discussion with some ideas for the future, some laughs and even some poetry, followed of course by a fabulous afternoon tea and time for lots of chats and catch ups.

### Upcoming Events

Our next get together is on the 7th of April and this will be a coach trip leaving from the Lincoln Event Centre and going to the Rolleston Resource Recovery Park

please be there by 10.15am as we hope to be away by 10.30am. The Resource Recovery Park is kindly being opened on the Tuesday, especially for us to have a look around there and to be advised what they do there and what they offer back to all our community. You will be amazed at the size of their facilities and what is on offer and how much stock they have, it should be interesting and fun. Then we re board the coach for a scenic trip to the Darfield Hotel for lunch, should be yummy!

The next outing on the 5th of May, may be another coach trip this time to Rangiora. This may depend on the fuel situation, which is changing very rapidly due to events far away from us. We will try and keep you as well informed as we can in the near future.

New members are always welcome and if you think this is for you and you would like to join us we would love to meet you. Come along and meet us.

Contacts are: Evelyn on 027 712 7195 or Gloria on 027 434 6554.

## PERFECT PETALS

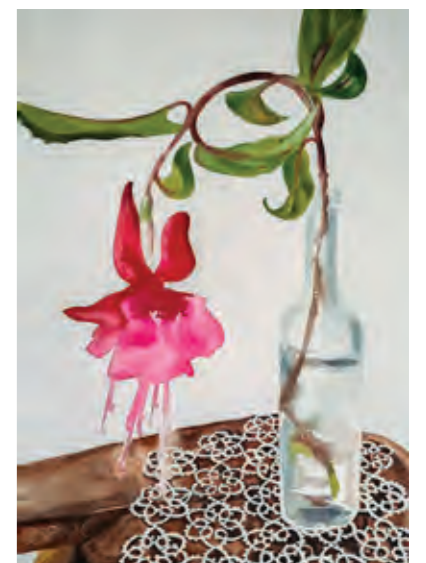


Did you know there's an art gallery in Lincoln? Each month Down By The Liffey Gallery features a selection of talented artists in an exciting exhibition.

This month's exhibition 'Perfect Petals' is on display from **9th April to the 3rd May**. Featuring artists **Faye Mather** and **Kristen Waldin**. Faye's beautiful paintings capture striking flowers creating a statement of blooms. Kristen's watermedia works explore still lifes of florals, botanicals and gathered objects.

### Opening hours are:

11.30am – 2.30pm Thursday  
10am – 4pm Friday to Sunday  
Down By The Liffey Gallery  
1 James St, Lincoln



**OVER 60 YEARS OF COMBINED SELLING EXPERIENCE.**

- ✔ \$12,500 <sup>+GST</sup> Flat Fee\*
- ✔ No Upfront Costs
- ✔ No Sale, No Fee



Thinking of selling? We are here to help.

<b>Anna James</b> 027 222 2742	<b>Dawn Pollard</b> 022 073 7580	<b>Tracy Stevenson</b> 027 543 9029	<b>Chelsea Palmer</b> 021 0245 0395	<b>Helen Gilmore</b> 027 503 9219
-----------------------------------	-------------------------------------	--	--	--------------------------------------

Arizto Ltd. Licensed REAA 2008 | \*Admin Fee + T&C's Apply

HOMES BY  
**PARKLANE**



## New Builds in Lincoln From \$729,000\*

At Homes by Parklane, we've been building quality homes across Canterbury for over 25 years, thoughtfully creating spaces where families thrive and communities grow.

Earlsbrook in Lincoln offers the perfect blend of peaceful living and modern convenience - surrounded by parks, great schools, cafés, and a welcoming community spirit.

### Why Build with us?

- New builds from \$729,000\*
- Contemporary designs with quality finishes
- Backed by a 10-Year Master Build Guarantee

### Let's discuss your dream home build:

James Maher - 029 201 2453

Ashish Sapra - 021 265 9394

[parklane.nz](http://parklane.nz)



\*T's & C's Apply

NEW LINCOLN  
SHOW HOME  
COMING SOON!  
STAY TUNED...



## FINDING HOME AWAY FROM HOME

Born in Ghana (West Africa), Osei spent his childhood in Auckland and Sydney before adopting Christchurch as home. After the major 2010 earthquake struck, Osei relocated to Auckland where he finished law school and started a family. Eleven years later Osei returned to the South Island with his wife and their two young daughters – out on a whim and fresh out of the COVID-19 lockdowns, they moved to Lincoln.

“It was a new beginning for us,” Osei reflects. “My wife and I met in Sydney, then we married in Auckland and lived in Wellington briefly. Now that we are in Lincoln, it feels like Christchurch was the home I could always come back to.”

It wasn't just Lincoln's tranquillity that drew them in. There was a good sense of community.

Sure enough, they built connections easily and found opportunities to give back to the community. Osei volunteers as a football coach at Prebbleton Football Club where his daughters play, Zarah (8) and Irié (5). He also volunteers as a sports coach at the youth unit in Christchurch's Men's Prison through a non-profit organisation, The Epic Sports Project.

“Sports is my passion and there is an abundance of facilities here. Coaching is one way I give to the community while doing something I love with my two girls. Seeing other parents show up for their kids early on Saturday mornings

– despite the week they've had – is the kind of positive environment and healthy lifestyle I want for my kids.”

Osei and his wife are homestay hosts to two Lincoln High School international students from Japan and China. For Osei, hosting students is another way of being community-focused while enriching someone's Canterbury experience. It has also sparked interest in his children to learn new languages.

Looking ahead, Osei hopes to set up an Immigration business. There are many late nights studying to become a licensed Immigration Adviser but his motivation is to keep pursuing things he values.

“Everything I take on is an extension of something I value. I don't see it as juggling – I see it as living because it's meaningful to me.”



By **Agnes Owusu**  
Feature writer

Each month we spotlight a Lincoln community member. Know someone with a story to share? Nominate them a [editor@lincolncommunity.co.nz](mailto:editor@lincolncommunity.co.nz)

## ANZAC DAY COMMEMORATION SERVICES SATURDAY 25 APRIL 2026



Join your local ANZAC Day commemoration service and remember the sacrifices of our servicemen and women. Services are organised by local Returned Services Associations and local community groups.

**Burnham, 6am Dawn Parade @ Army Camp gates** Service and wreath laying ceremony

**Leeston, 9am @ Ellesmere Public Cemetery, Returned Services Association section, 323 Feredays Road** Wreath laying

**Leeston, 10.30am @ Leeston Rugby Pavilion** Service followed by parade to the cenotaph and wreath laying ceremony

**Lincoln, 2pm @ Lincoln Event Centre** Service followed by wreath laying ceremony

**Prebbleton, 9am @ District War Memorial** Wreath laying ceremony

**Rolleston, 11am @ Town Square behind Te Ara Ātea** Parade attendees meet near the Scout Den, Service followed by wreath laying ceremony

**Springston, 10.30am @ Springston Hall** Service followed by wreath laying ceremony at the District War Memorial

**Springston, 12pm @ Springston South Soldiers Memorial Hall, Days Road, Springston** South RSA Service commemorating a Poppy Trail

**Tai Tapu 8.45am @ Meet at Tai Tapu School** Raise flag, march to the cenotaph, 9am Service and wreath laying, then march back to school.

## FEATURED EVENTS



### Easter Chillfest

Friday 3 April – Monday 6 April  
@ Selwyn Sports Centre

Selwyn's coolest new event is coming this Easter! Take a spin on the artificial ice skating rink, then dive into inflatables, games and heaps of family-friendly entertainment. Don't miss the Saturday indoor market plus tasty food trucks all weekend. Fun for all ages! Ice skating \$12-\$15, Inflatables \$6. Limited sessions, bookings essential at [selwyn.govt.nz/chillfest](http://selwyn.govt.nz/chillfest)



### The Gluten Free Food Festival

5-8pm, Friday 10 April / 10am – 4pm, Saturday 11 April  
@ Lincoln Event Centre

Get ready to eat, shop, and discover at the Canterbury Gluten Free Food Festival. With the rising prevalence of coeliac disease and other diseases The Gluten Free Food Festival is New Zealand's premier event dedicated exclusively to gluten free products and cuisine. Go to [www.iticket.co.nz/events/2026](http://www.iticket.co.nz/events/2026)



### The Walking Festival 2026: Liffey Stream and Wetlands Walk

10am to 11.30am, Tuesday 14 April  
@ Liffey Stream, Meet at the corner of Leinster Terrace and Moffat Drive

Take a guided 4km walk from Lincoln township, along the banks of the Liffey to the Lincoln Wetlands. Along the way, Selwyn District Council's Biodiversity team will provide educational insight about some of the flora and fauna in the area. An easy flat track, suitable for all ages that are able to maintain a good walking pace. Free. Register at [humanitix.com](http://humanitix.com)



### Have your say on the Selwyn District Councils 2026-2027 Draft Annual Plan

9.30am – 12.30pm, Saturday 18 April @ Lincoln Market

Have your say about the Selwyn District Draft Annual Plan with the Mayor, Deputy mayor and various Councillors at the above event.

Casual 'coffee catchups' with Cr Carrick are also on the following dates:  
4pm – 5pm, Thursday 9th April @ The Good Home, Prebbleton,  
1.30pm – 2.30pm, Thursday 23rd April @ The Cottage Cafe, Lincoln

## Join our community meeting

7pm, Monday 13th April  
Community Care



## AROUND YOU



### Karma Keg with Selwyn / Banks Peninsula

2-4pm  
Saturday 11 April  
@The Laboratory



### Flex Fitness Community Open Day

8am – 12pm  
Saturday 18 April  
@ Flex Fitness Lincoln



### Bean of Life

9.30am – 11.30am  
Every Tuesday during school term  
@ Lincoln Union Church



### April School Holiday Sessions

Check out @ Lincoln Library for kids activities and events these school holidays

## FUTURE EVENTS



### Selwyn Lions Charity Bridge Tournament – raising funds for Lions Cancer Screening Bus

9.30am – 2.30pm, Sunday 3 May  
@ Lincoln Event Centre



### Selwyn Community Patrol Social

2pm – 5pm, Sunday 7 May  
@ The Laboratory  
Pop in and meet us if you have thought about joining the patrol



### Wine Insights: Sauvignon Blanc and Pinot Noir

6.30pm – 7.30pm  
Thursday 21 May  
@ Lincoln Library



### Nurtured Ones Market 2026

9.30am – 2pm, Sunday 24 May  
@ Lincoln Event Centre  
Meijer Drive, Lincoln

### ELLESMERE LIONS PEA STRAW

Help the Lions continue with their current fundraising projects. Small bales \$8 and medium bales at \$70. Price includes delivery in Lincoln and Selwyn District. Contact: Richard Boyce, phone 027 7141 324 or 325 2279 or Alex Hayward, phone 324 4094. Email [lionspeastraw02@gmail.com](mailto:lionspeastraw02@gmail.com) with name, address, telephone number and amount required.

### Your Healing Starts Today

Are you, a friend or family member navigating emotional struggles, life transitions, relationship challenges, mental health concerns, or something else? – I'm here to help.

Sharon Hess-Rossouw | Professional Counsellor  
[transitions counselling.nz](http://transitions counselling.nz) | 022 350 0382 | Book Online



### Music at The Laboratory

Our Sunday Music Sessions run every Sunday from 3-5pm  
@ The Laboratory, 17 West Belt, Lincoln

- Sun 5 Apr DT Music
- Sun 12 Apr Henry McIlraith
- Sun 19 Apr Anna & Damo
- Sun 26 Apr Hannah May

Come on down and enjoy the good food, good brews and good tunes!



### Down By The Liffey Gallery

Opening hours: 11.30am – 2.30pm Thursday  
10am – 4pm Friday to Sunday  
@ Down By The Liffey Gallery, 1 James St, Lincoln

Each month Down By The Liffey Gallery features a selection of talented artists in an exciting exhibition. This month's exhibition *Perfect Petals* is on from Thursday 9 April – Sunday 3 May. Featuring artists Faye Mather and Kristen Waldin. Faye's beautiful paintings capture striking flowers creating a statement of blooms. Kristen's watermedia works explore still lifes of florals, botanicals and gathered objects.



### Mahoe Mini Bioblitz

2pm – 4pm, Sunday 26 April  
@ Mahoe Reserve, Boundary Road, Lincoln

Join Canterbury Museum for a Mini Bioblitz at the Mahoe Native Reserve in Lincoln as part of the City Nature Challenge Ōtautahi. You'll be on the hunt for anything that flies, grows, crawls and hides! We need your help to find and record all the amazing plants and creatures that call Mahoe home! For more information, contact the Coordinator, Ruth Wood phone 021 074 3905, Email [ruth.wood@xtra.co.nz](mailto:ruth.wood@xtra.co.nz) [www.lincolnnvirotown.org.nz](http://www.lincolnnvirotown.org.nz)



**HOP NOTCH**  
FRESH HOP  
TAP TAKEOVER

**LABORATORY**  
17 WEST BELT LINCOLN

**SATURDAY 18TH APRIL**  
FROM 11AM TIL LATE LIVE MUSIC 2-5PM  
FRESH AS BREWS FROM LOCAL BREWERIES!

## SCHOOL HOLIDAYS... WE'VE GOT YOU COVERED AT THE APOLLO!

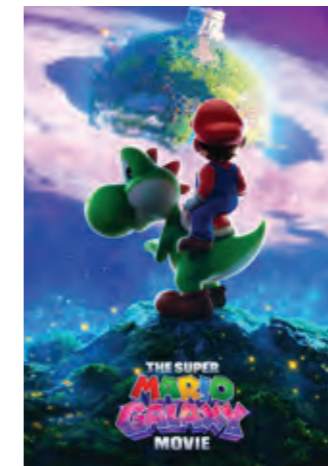
Bring the kids along for some big screen fun with family films including **Hoppers**, **The Magic Faraway Tree**, **The Super Mario Galaxy Movie** and more. Plus, make movie time even better with our **School Holiday Kids Snack Pack** including crisps, mixed lolly bag and a kid's sized drink for just \$10 per person.

Meanwhile, the grown-ups can enjoy a great lineup of films this month, with favourites still screening including **Project Hail Mary**, **Fackham Hall**, **Holy Days** and more. Check out what's coming up below!



**The Magic Faraway Tree**  
*Adventure / 26 Mar*

Enid Blyton's Magic Faraway Tree comes to the big screen! A family moves to the English countryside where the kids discover a magical tree and its odd residents. With Moonface, Silky and friends, they journey to fantastical lands and rediscover family connection through adventure.



**The Super Mario Galaxy**  
*Movie Adventure / 2 Apr*

Mario is blasting off the map and into space! Follow him through cosmic worlds, galactic challenges, and adventures far beyond the Mushroom Kingdom. Packed with action, fun and colour, it's a perfect pick for these school holidays!



**Fuze Action / 16 Apr**

Things get explosive in London when construction workers uncover an unexploded WWII bomb, forcing everyone to evacuate. Amid the chaos, a clever group of thieves sees the perfect opportunity to pull off a daring, high-stakes heist—can anyone stop them? A twisty thriller with an attractive cast, endlessly watchable!



**Michael**  
*Biography / 22 Apr*

Follow the story of 'King of Pop' Michael Jackson, played by his real-life nephew Jaafar Jackson. From his childhood leading The Jackson 5, through times of abuse by his father, to becoming a global superstar, blending personal moments with iconic early solo performances.



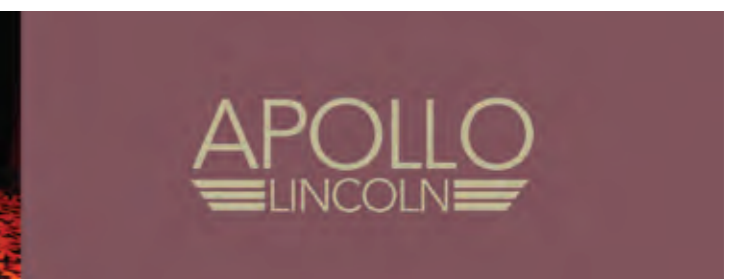
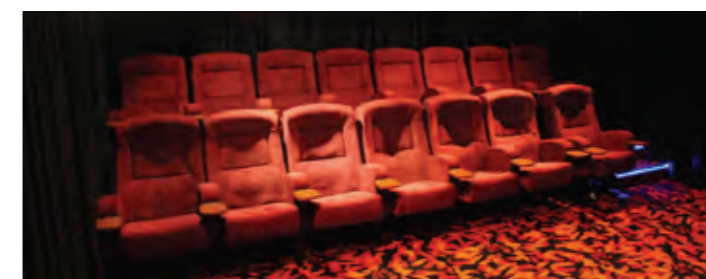
**The Devil Wears Prada 2**  
*Comedy / 30 Apr*

Date night sorted! Nearly twenty years after their iconic roles as Miranda, Andy, Emily and Nigel, Meryl Streep, Anne Hathaway, Emily Blunt and Stanley Tucci return to the fashionable streets of New York City and the sleek offices of Runway magazine.



**The Sheep Detectives** *Comedy / 7 May*

When their beloved shepherd is found dead, a flock of mystery-loving sheep decide to solve the crime. But leaving their peaceful meadow to investigate the human world proves far more complicated than the murder stories they've been listening to! A humorous detective parody starring Hugh Jackman & Emma Thompson.





**JUSTINE HOLMES**  
BRANDING &  
GRAPHIC DESIGN

Creating quality, effective branding and graphic design that is meaningful, functional and engaging. I work together with large and small clients to deliver tailor-made design solutions. With over 25 years design and advertising experience.



021 147 0206  
[www.justineholmesdesign.com](http://www.justineholmesdesign.com)



**BRIDGESTONE** **TYRE CENTRE**  
**LINCOLN**

📍 23 Gerald Street, Lincoln  
☎️ 03 325 2129 [fb.com/bridgestonelincoln](https://www.facebook.com/bridgestonelincoln)

## USEFUL CONTACTS

Art Group of Lincoln	Faye 347 3399
Community Garden	021 074 3905
Death Café Lincoln	020 425 0369
Down by the Liffey Gallery	325 2877
Ellesmere Badminton Club	027 325 2044
Ellesmere Indoor Bowls	325 3143
Ellesmere Probus Club	325 6165
Junior Enviro Action Group	027 307 0767
Kaituna Golf Course	027 477 9425
Liffey Toastmasters	027 955 7996
Lincoln Badminton Club	347 9707
Lincoln Bowling Club	325 2289
Lincoln Bridge Club	325 3222
Lincoln Business Assn	325 2039
Lincoln Community Care	325 2007
Lincoln Cricket Club	029 240 0093
Lincoln & Districts Historical Soc.	325 3320
Lincoln Envirotown	329 5858
Lincoln Farmers Market	329 5757
Lincoln Girl Guides	027 462 8871
Lincoln Golf Club	325 2453
Lincoln ICONZ	347 8722
Lincoln Indoor Bowls	347 3212
Lincoln Masonic Lodge	349 9905
Lincoln Men's Shed	<a href="mailto:linolnmensshed@gmail.com">linolnmensshed@gmail.com</a>
Lincoln Netball Club	<a href="mailto:lincolnnetballsecretary@gmail.com">lincolnnetballsecretary@gmail.com</a>
Lincoln Outdoor Bowls	325 2289
Lincoln Patchwork and Quilting	021 129 2833
Lincoln Plunket	325 2179
Lincoln Rugby Club	027 303 1879
Lincoln Scottish Dance Club	3497126
Lincoln Scouts	021 258 5680 (text)
Lincoln Table Tennis Club	325 7694
Lincoln Tennis Club	<a href="mailto:lincolnintennisz@gmail.com">lincolnintennisz@gmail.com</a>
Mother4Mother	357 4970
Rotary Club of Lincoln	029 999 8330
Selwyn Lions	325 7957
Selwyn Parenting Network	021 166 8603
Selwyn Printing Co.	741 3049
Senior Citizens Club	027 712 7195
SeniorNet	027 547 4793
Spinning/Knitting Group	325 3320
Springs Day Club	329 5634
Springston Evening Garden Club	344 5781
Springston Garden Club (daytime)	325 5002
St Patricks Craft and Friendship Group	027 334 1151
Tai Tapu Garden Club	329 6268
Time Banking	423 0456
Toy Library	021 044 2407
U3A Ellesmere	028 415 4961
Community Dental	0800 846 983
Healthline	0800 611 116
Lincoln Comm. Response	325 7732
Lincoln Library	347 2876
Lincoln Police	378 0160
Lincoln Fire Station	325 2801
Nurse Maude	375 4200
Selwyn Community Patrol	<a href="mailto:info@selwyncommunitypatrol.org.nz">info@selwyncommunitypatrol.org.nz</a>
Zumba & Zumba Gold (Lincoln)	<a href="mailto:zumbahappywithjustine@gmail.com">zumbahappywithjustine@gmail.com</a>