

# Lincoln Local

Lincoln community newsletter

May 2026



ANZAC Tribute  
Page 4

Selwyn Upper Huts  
Page 7

Support group  
Page 8

Thank you to our sponsors



## WELCOME TO THE MAY ISSUE

The Lincoln newsletter is a community newsletter proudly produced by the Lincoln Community and Residents Association (LCRA) with the gratefully received support from our sponsors listed at the bottom of the cover page.

ANZAC has been and gone with the traditional ceremony held at the memorial wall at the north end of the Event Centre. LCRA has revived the tradition of contributing a wreath that was laid at the wall as part of the ceremony. It was very special to be part of it again.

Stage 1 of the town centre upgrade is ongoing with completion now projected to be September. Evidence of the final product and quality are starting to emerge in some areas. It is exciting and should give us some confidence that the final outcome will be worth the current frustrations. It's going to look flash. The effected businesses however still have to suffer for a significant amount of time yet. It is very important that we support these local businesses. If we don't they may not survive.

I would like to take this opportunity to raise an issue that is becoming more prevalent. There is evidence that the community cares about community issues and its governance but it is now obvious that the next step of participation, engagement, or involvement, or whatever you would like to call it is a difficult one. We have heard that attracting people to the Selwyn Councils Annual Plan consultation meetings and getting feedback is proving difficult. At a recent public meeting at the Event Centre as part of a series of meetings, only 7 people showed up! This was less than the number of councillors and Selwyn Water folk present. It's very disappointing when the Annual Plan is the councils 26/27 work program, budget, and planned RATE RISE. The new

council received a huge mandate for change at last years elections and now they need more guidance with making these important decisions going forward. Submissions closed on 26 th April and those wishing to speak to their submission will have the opportunity between the 11th and 22nd May. If you took the opportunity to lodge a submission and want to speak to it, go to [www.selwyn.govt.nz/annualplan](http://www.selwyn.govt.nz/annualplan).

### LCRA Membership

The lack of community involvement in community affairs mentioned above is also being felt by LCRA. We are also struggling to attract interest at any level. We need more committee members as we are running at a bare minimum. We have also created a new general membership level called 'THE FRIENDS OF LINCOLN'. 'The Friends of Lincoln' has been created for those concerned about our community and want to be kept informed but are too busy for more commitment. If you are interested, please email us [lincolnresidentsinc@gmail.com](mailto:lincolnresidentsinc@gmail.com) or contact us through the website ([www.lincolncommunity.co.nz](http://www.lincolncommunity.co.nz))

All the best from LCRA

Lindsay Wilson – Chairperson

Other Committee Members - Andre Strauss (Deputy Chair), Tanya Douglas (Treasurer/Secretary)

Kathryn Claridge, Ralph Scott, Neale Elder, Mark Song

Our next meeting is at 7.00 on the 11 th May at Community Care. Our meetings are always open to public visitors.



**Official newsletter of the Lincoln Community and Resident's Association  
May 2026**

### CONTACT US

[editor@lincolncommunity.co.nz](mailto:editor@lincolncommunity.co.nz)  
[lincolncommunity.co.nz](http://lincolncommunity.co.nz)

### CONTRIBUTORS

Lindsay Wilson (LCRA), Ruth Wood (Lincoln Envirotown), Kerry Thomason (Lincoln Senior Citizens), Selwyn District Council, Mike Noonan (Community Care), Denise Carrick (Councillor), Melanie Webster (Mumlife)

Brought to you by

# Lincoln's trusted real estate advisor



**Sha Jega**  
Real Estate Advisor  
0273753670



Licensed under the REA 2008.



## ANZAC DAY TRIBUTE

This was my first year as a Councillor on Anzac Day. It was a huge and daunting honour to be placing a wreath at the Prebbleton Anzac Day Ceremony.

I also attended the dawn service at Burnham and my local Lincoln Service in the afternoon.

I will be honest that I find the services really hard and emotional but it seems more and more important each passing year, with the state of the world and that real peace is truly illusive in so many parts of the world.

As a personal tribute to the day I shared a piece of writing that is from a biography of one of my nans brothers (my great Uncle) Marine Edward Salthouse. It is not poetic or fancy - just very real.....

### **Marine Edward Salthouse**

**Unit: "E" Troop, No 45 Commando**

'My section being first off, we were in the fore hold of our landing craft. So many of us crammed into a small space with the rough seas, nearly all of us sea sick. We were in a mess, the smell awful, not allowed on deck, lack of space and all the flak flying about - it was dangerous. We took turns poking our heads out of the hold to look at the beach. What a sight - just like a giant firework display, the noise was tremendous, a sight never forgotten.

We hit the beach. The two ramps went down. A few of us started down the ramps but the skipper had made a slight error and we found ourselves going over the side of the ramps into deep water. The skipper had a second go at the landing and the rest of the troops went ashore without getting their feet wet. Meanwhile the few of us were struggling not to drown. Being up to our necks in rough seas with 80lb packs on our backs, being constantly knocked off our feet had not been part of our training.

Eventually I crawled ashore. I stood on my head to get rid of all the water as it was making it hard to move very quickly. I was in pretty poor shape to fight a war. I had no weapon, it had been lost at sea. There were plenty of weapons I could have used, the owners not having any use for them but I could not bring myself to take one. I felt like I would have been leaving them defenceless. I did acquire a rifle later. Getting off the beach as quick as possible we made our way to our rallying area, marshy ground. Fortunately the mortars (Moaning Minnie's) dropping near us were not causing any casualties. The soft ground was smothering the shrapnel.

I was part of Lord Lovat's 1st Special Service Brigade, 45 Royal Marine Commandos. My troop 'E' (Easy Parachute Troop), all troops specialised in something.

Our objective on D Day was the Monville Batteries, a back up in case the Airborne didn't do the job. We had two men drop with the 6th Airborne, Lt Peter Winston and Marine Donald. The idea being that they would link up with us at Pegasus Bridge with the latest information about our targets. Unfortunately both were taken prisoner. Peter Winston did escape, made his way back to England and rejoined us several months later. Sadly he was then killed in action in Germany.

Although in the hands of the Airborne, Pegasus Bridge was still a dangerous place. Our C.O. Lieutenant Day was wounded crossing, evacuated back to the beach and received another wound whilst waiting to be shipped out. My Sgt wasn't so lucky either. A sniper put a bullet through his neck. I think maybe he was the first Green Beret to be treated in the Cafe by the bridge (this was Sergeant Hepper; he survived the war.) Our orders now were to attack Monville. This proved to be very costly in lives, 25 dead plus all our wounded on top of the previous casualties.

Our heavy packs were causing problems. They were self sufficient, three days supplies of ammunitions

and rations. However they were slowing us up so it was decided to dump the packs at the side of the road and carry what we could in our pockets. This was a decision we came to regret. With the heavy fighting the ammunition got a bit low. During the night a patrol set out to retrace some packs. No luck. The enemy had been there first and booby-trapped the lot. From then on every shot had to count. At the end of the day we were low on men and ammunition.

So ended my D Day.'



HOMES BY  
**PARKLANE**

**NEW LINCOLN  
SHOW HOME  
COMING SOON!**

STAY TUNED...



## New Builds in Lincoln From \$729,000\*

At Homes by Parklane, we've been building quality homes across Canterbury for over 25 years, thoughtfully creating spaces where families thrive and communities grow.

Earlsbrook in Lincoln offers the perfect blend of peaceful living and modern convenience - surrounded by parks, great schools, cafés, and a welcoming community spirit.

### Why Build with us?

- New builds from \$729,000\*
- Contemporary designs with quality finishes
- Backed by a 10-Year Master Build Guarantee

### Let's discuss your dream home build:

James Maher - 029 201 2453  
Ashish Sapra - 021 265 9394

[parklane.nz](http://parklane.nz)



\*T's & C's Apply



## LINCOLN ENVIROTOWN COMMUNITY GARDENS

We encourage groups to visit the Community Gardens, especially those with an interest in gardening, and young people. With only limited garden tasks required at this time of year, it is sometimes a challenge to come up with an activity to engage our younger visitors.

For a recent visit by around 20 girls from the Lincoln Guides group, we came up with the idea of adding to our collection of decorated stones. We had received a collection of sample pots of acrylic paint from Resene Hornby, with almost all the colours of the rainbow represented. Equipped with paints, brushes, and stones of various sizes the guides tackled the task with enthusiasm. The colourful collection of stones produced by the guides has been placed prominently around the Community Gardens to brighten up the area. Why not produce some decorated stones to enhance your garden?

The guides also brought brassica plants that they had nurtured from seed, and they planted these

Tony Bywater shared his enthusiasm for bonsai tree growing in March at his annual workshop. He always brings along his impressive collection of tiny trees to the workshop, and these encourage the participants in what can be achieved with dedication. They were taken through the steps required in “training” a tree to assume the desired shape by branch trimming and wiring. Tony also provided instructions on how to care

for their ‘baby’ bonsai. Our granddaughter Isla was pleased with her effort and she is looking forward to returning to Tony’s refresher workshop in a year’s time.

It’s nice to receive positive feedback. After the workshop one of the participants wrote, “Thank you for organising the Basic Bonsai Workshop Ruth. I enjoyed it very much – it was skilfully presented and stimulating. As a newcomer to Selwyn, I appreciate the effort put into welcoming me into your community.”

### Forthcoming workshops

- 20th June – Rose pruning
- 25th July – Apple tree maintenance

More details in next month’s report.

### Ruth Wood

Coordinator

ruth.wood@xtra.co.nz



## COUNCIL RELEASES DRAFT UPPER SELWYN HUTS LICENCE TERMS AHEAD OF DECISION

Proposed new licence terms for Upper Selwyn Huts are now available, giving owners an early opportunity to review and provide feedback ahead of Council’s decision.

The draft terms, which would underpin new 30-year licences, will be presented to Councillors for approval at a Council meeting on 24 June.

The early release of the draft terms demonstrates Council’s commitment to open communication and supporting greater certainty for the Upper Selwyn Huts community ahead of the June decision.

Under the Local Government Act 2002, Reserves and Other Lands Disposal and Public Bodies Empowering Act 1924, and the Reserves Act 1977, Council is required to provide services and manage Upper Selwyn Huts as an established settlement, reflecting obligations that differ from those applying to other nearby hut settlements around Te Waihora Lake Ellesmere.

Under the proposal, a single, standard set of terms and conditions would apply to all Upper Selwyn Huts licence holders. This approach is consistent with the Council’s role as manager of Crown-owned reserve land and helps ensure fairness, clarity, and consistent expectations across the settlement.

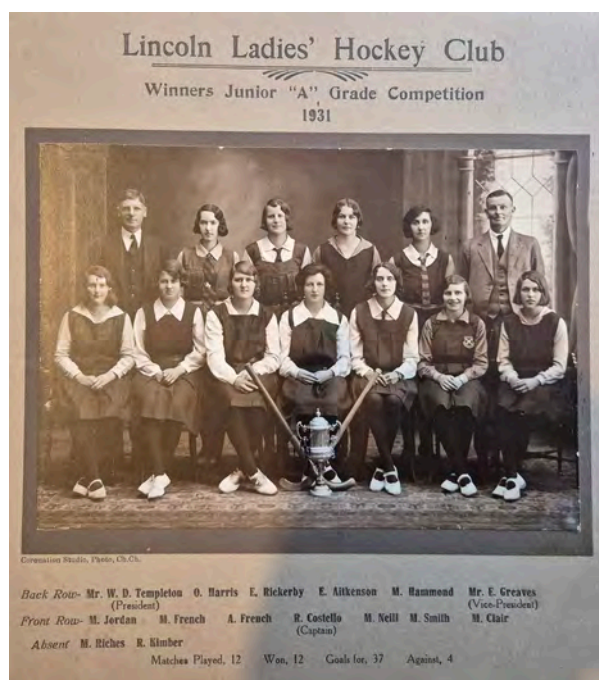
The terms have resulted from reviewing the feedback received during the engagements with hut community in 2024 and 2025, Council’s legal responsibilities as manager of Crown-owned reserve land, decisions already made by Council, and conditions that are practical, fair, and enforceable. Council Interim Chief Executive Steve Gibling said the Council understood the importance of certainty for people who live in and care for the huts.

“We recognise the long connection many people have with Upper Selwyn Huts. These proposed terms are about balancing that history and current use with our legal, environmental, and safety responsibilities. Just as importantly, we want work with the community in a way that is clearer, and more respectful of the community.”

While existing licences will reach their expiry date shortly, the Council has confirmed there will be no gap in licensing. Current licences remain operative, and existing terms and conditions will continue to apply while the transition to new licences is completed, subject to Council approval.

Full information, including details on how to provide feedback, is available on the Selwyn District Council website.

## A HISTORIC LINCOLN PHOTO REAPPEARS



Joanne Glassford sent a copy of a photo which belonged to her Nan, Ethel Rickerby, who was in the victorious Lincoln Ladies' Hockey team in 1931.

The Lincoln Ladies Hockey Club was formed in April 1925 at a meeting in the Lincoln Public Library. There was a good attendance of ladies and the meeting was chaired by the Rev. F. Robertson. The opening day was held in a paddock lent by Mr W. Templeton and many people from surrounding districts attended. Their first game was against Dunsandel in June 1925, at Lincoln, when they were beaten 3:nil against a side that had been playing since at least 1903. In the return match Dunsandel beat Lincoln by 6:nil. Lincoln played Southbridge in August 1925 which resulted in a nil-all draw. Both teams had been formed about the same time. The 1925 season ended in October with a ball in the Druids' Hall tastefully decorated with the Club colours of black and gold, with over 80 couples attending.

At the AGM, held in the Public Library in May 1926, it was decided to enter a team in the junior competition in Christchurch and they were beaten by New Brighton 2:nil in their first game. In the 1926 season they were beaten by Digby's, Aranui, Southbrook, and Trinity but they did beat Technical B. At the five-a-side competitions in June, Lincoln entered two teams that were beaten early in the rounds by good teams. The Lincoln team had improved by June and held Dunsandel to a nil-all draw.

In 1927, two games against Southbridge were drawn but in the 3rd game Southbridge won 4:1. Preparations for the September ball were underway by July. The ball was again a success with a good attendance with representatives from Christchurch, Southbridge, Leeston and Dunsandel etc. A move was made by Lincoln to form an Ellesmere Ladies' Hockey Sub-Association at a meeting held at the end of September 1927 in the Lincoln Public Library. Details were deferred to an October meeting held at Leeston. Lincoln pulled out and Southbridge, Leeston and Dunsandel formed the Sub-Association. At that stage Lincoln had only 12 playing members including 1 in Christchurch and 2 at Prebbleton and the future was uncertain, but in 1928 they were given permission to play in Christchurch.

Again in 1928 Lincoln played Southbridge and Leeston and started to organize the ball in August for early September. Somewhat unusually the hall decorating was to be carried out by a Christchurch firm. While the team had only 12 players they came 3rd in the junior competition in Christchurch in the 1928 season however it was interesting to read that the

Tai Tapu School girls' B hockey team played a match against the Lincoln B team in September and won 10:nil.

Two teams were entered in the six-a-side tournament at King's Birthday weekend in Christchurch where the B team was beaten in the first round but the A team was only beaten in the final match. The 1929 ball was held in early September and was similar to earlier balls and although the weather was inclement, the hall was well filled.

The report at the 1930 AGM stated that the 1929 year was successful and it was decided to continue with a team in the Christchurch competition's Junior B grade. As was common in Ladies' Hockey teams, girls were married and celebrations were organized. In July 1930 a social was held in Mr Howell's granary for the now Mrs A. E. Payne. Through the 1930 season newspaper reports stated that the Lincoln team had not lost a game in the Junior B competition although there was one draw. At the 1930 ball in the Druids' Hall, the building was taxed to its utmost capacity and the event was an unqualified success.

The Southbridge team came to Lincoln for its 1931 annual friendly match which ended in a 1-all draw.

**Mike Noonan**

JOIN US FOR A

# *Vintage Vibes*

## MORNING TEA

WEDNESDAY 3 JUNE

11-12pm

Delicious Housemade treats  
w tea or coffee  
only \$18pp



at

# The LABORATORY

BOOKINGS REQUIRED



## SUPPORT GROUP AT COMMUNITY CARE LINCOLN

### Ladies' Support Cuppa

Our Support Group Cuppa came about in October 2024 when, one morning, a lady came in looking for a support group and then, that same day in the afternoon, another lady came in also looking for a support group. Both lady's husbands were suffering from memory loss – one had been diagnosed with Dementia, the other had not reached that stage.

I came up with the idea of a drop in Cuppa. I put the idea forward to the CCL Board to start a Support Group for those who needed support caring with someone with Dementia, Alzheimer's, Parkinson's, a brain injury, anything at all. The Board were very supportive.

The idea was just to have a cuppa and sit around and talk (only if they wanted to), share their situations or just listen, ask questions. Six ladies attended the first meeting.

A year on, we have about 8 – 10 ladies who attend when they can and all the ladies say they look so forward to their monthly gathering – they make sure it is booked in their diaries! The ladies are all at different stages on their journey so are able to help each other with information and guidance.

We have had a local lawyer speak to the group on Power of Attorney, wills and other information as these are very important issues to understand when you have someone whose health is declining very quickly.

It has been so rewarding to see all the lady's growth

from when they first arrive, especially those in very challenging situations and the confidence they have now, with the help of others in the group.

I would like to thank the ladies for teaching me, sharing their lives and situations and becoming part of their journey, even though it may be a small part of once a month. If the group is looking for certain information, I try to find it for them through my contacts.

It is so important for the caregiver to have an outlet, to be able to talk to others in similar situations. - so just a simple gathering for an hour or so, a cuppa, a biscuit (the odd home baking) is a great mix for support from each other.

### Men's Support Cuppa

We would like to offer a men's Support Cuppa as well as we feel it is important for the men who may be caring for their wives/partners. This would be run by our male volunteers. So if you know of any men who would like to join this men's group, please ring our office.

There is no judgement – just caring help, guidance & support.

So if you know of anyone who may benefit from these Support Cuppas, please ring me, Sally, at Community Care Lincoln, (03) 325 2007 for further information.

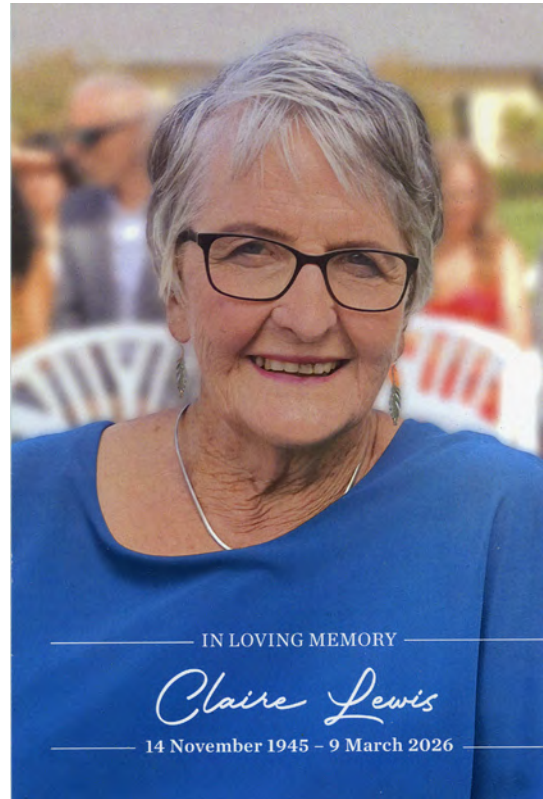
**Claire Lewis**

As emphasised at her recent funeral, Claire was heavily involved in helping the community and this included being a very dedicated volunteer for Community Care Lincoln (CCL). She had previously delivered Meals in Westport and joined Lincoln in 2016 indicating that she wanted to help with out as a Meals on Wheels driver, providing hospital/doctor transport and assisting at events.

More recently, Claire was on the roster to collect the frozen meals on a Monday from Lincoln University. She would bring them back to CCL and sort them out for delivery. Claire would find any discrepancies with the meals, and sometimes she would sort out problems when picking them up. She would then help bag, label and put the meals in the freezer ready for delivery the following week.

When a driver was not available, Claire always offered to help out by delivering the meals. Claire also helped out at Reception when needed and loved the contact with the community. She was always ready to help with any Cake Stalls, Fairs and the Spring Fling.

Claire is sadly missed, for her unwavering help, her humour and caring personality.





# OVER 60 YEARS OF COMBINED SELLING EXPERIENCE.

✔ \$12,500 <sup>+GST</sup> Flat Fee\*
✔ No Upfront Costs
✔ No Sale, No Fee



## Thinking of selling? We are here to help.

<b>Anna James</b> 027 222 2742	<b>Dawn Pollard</b> 022 073 7580	<b>Tracy Stevenson</b> 027 543 9029	<b>Chelsea Palmer</b> 021 0245 0395	<b>Helen Gilmore</b> 027 503 9219
-----------------------------------	-------------------------------------	--	--	--------------------------------------

Arizto Ltd. Licensed REAA 2008 | \*Admin Fee + T&C's Apply



## LINCOLN SENIOR CITIZENS

The 7th of April saw 38 of our Lincoln Senior Citizens members board their coach at the Lincoln Events Centre for the trip to the Rolleston Resource Recovery Park. This was a real eye opener for many of our members who had not been to the park before. On arrival a lovely staff member came aboard our coach and he gave us an extremely interesting talk about the rubbish, the ever increasing volumes of it and their processes to deal with it and its uses. There were many questions, like what happens to the green waste and how is it converted to compost then where does it go. Also he explained how the recycling waste is handled, what ends up in the bins that shouldn't be there and which types of waste should go in which bins. Many of our members are now hopefully clearer on what goes in which bin and how important it is to get it right as it is too time consuming and expensive for staff to sort it. He then explained some of their future plans for the next 10 years on how they hope to improve their recycling abilities. He explained about their educational centre, the community garden area and how they are trialing some waste into foot paths etc. A very informative talk, a very well done and special thanks to the recovery park and SDC for making this happen. Those who wished went into their very large, clean and tidy well laid out shop and browsed around. I hear there was a few bargain purchases made to be collected later. It was a great place to visit.

Then it was time to board our coach for a scenic journey to the Darfield Hotel for the ever important lunch. They put on a wonderful meal for us all, there was many happy faces and contented tummies, well done Darfield Hotel. All too soon it was time to head back home, another well organised and enjoyable outing for those members who were able to be there.



### Upcoming Events

The next outing on the 5th of May, will be another coach trip this time to Rangiora. This may depend on the fuel situation, which is changing very rapidly due to events far away from us. We will try and keep you as well informed as we can in the near future.

On the 2nd of June it will be the Lincoln Senior Citizens groups 50th birthday, yes 50th, amazing. This will be held at the Lincoln Bowling Club with a start time of 11am. You will need to be there to enjoy a 2 course meal, entertainment, raffles and expect lots of chat and laughter. Because we are celebrating 50 wonderful years of helping your community expect lots of gold decorations about. Our group continues to grow in members so a very special thanks to your hard working committee members who continue to make your outings informative, enjoyable and a venue to meet and chat with others.

New members are always welcome and if you think this is for you and you would like to join us we would love to meet you. Come along and meet us.

Contacts are: Evelyn on 0277127195  
or Gloria on 0274346554.

**ELLESMERE LIONS PEA STRAW**

Help the Lions continue with their current fundraising projects. Small bales \$8 and medium bales at \$70. Price includes delivery in Lincoln and Selwyn District. Contact: Richard Boyce, phone 027 7141 324 or 325 2279 or Alex Hayward, phone 324 4094. Email lionspeastraw02@gmail.com with name, address, telephone number and amount required.



## 5 SIMPLE WAYS TEENS CAN GET ON TOP OF THEIR SKIN (WITHOUT THE DRAMA!)

Skin during the teen years can be an absolute rollercoaster of a journey. One week it's calm, the next there's a breakout right before something important. Hormones, stress, sport, phones glued to faces, and a flood of skincare advice online all add to the confusion — for teens and parents alike.

The good news? Healthy skin doesn't need a complicated routine or harsh products. In fact, some of the biggest improvements come from simple habits done consistently.

Here are five easy, realistic ways teens can get more control over their skin.

### 1. Clean your phone screen

Phones collect oil, bacteria, makeup, sweat — then get pressed straight onto the face. Not ideal! Giving your phone screen a quick wipe with a screen-safe cleaner or alcohol wipe once a day (or at least a few times a week) can really help reduce breakouts, especially around the cheeks and jaw.

### 2. Change pillowcases every 2–3 nights

Pillowcases soak up oil, sweat, hair products, and bacteria. Sleeping on the same one for a week means rubbing all of that back onto your skin night after night. Changing pillowcases every couple of days, or flipping them halfway through, is a simple, low-effort habit that often makes a noticeable difference.

### 3. Eat zinc-rich foods (and supplement if needed)

Zinc plays an important role in skin healing, inflammation control, immune function, and oil balance. Good sources include red meat, eggs, pumpkin seeds,

sunflower seeds, chickpeas, lentils, and sea-food. Some teens may benefit from a zinc supplement, particularly with ongoing or inflamed acne, but dosing does matter, so it's best done with guidance.

### 4. Keep skincare (and makeup) simple

More products don't equal better skin. Using too many actives can irritate the skin and clog pores. Most teen skin does well with a gentle cleanser, a light moisturiser, and sunscreen during the day. That's it. It's also worth being mindful with makeup — some lower-quality or heavily fragranced products can trigger breakouts. Choosing simpler, good-quality makeup and removing it properly each night can go a long way.

### 5. Hands off the face (most of the time)

Touching, picking, or leaning on the face transfers bacteria and increases inflammation. Picking spots can also slow healing and increase scarring. No one's perfect, but a bit of awareness here can really help skin settle.

It isn't about having flawless skin, that is pretty rare for teenagers! But we can aim for healthy, clear skin, it just needs support, consistency, and a bit of patience. Small daily habits genuinely add up.

Written by Melanie, a local naturopath, medical herbalist and clinical nutritionist.

Through MumLife, she supports families with simple, evidence-informed natural health solutions. Melanie offers consultations by phone, helping people choose and access the right herbs, supplements and skincare without the overwhelm.

[www.mumlife.nz](http://www.mumlife.nz)



## RATES CORRECTION TO BE APPLIED AUTOMATICALLY TO FINAL 2025/26 INSTALMENT

Selwyn District Council has confirmed how it will correct the General Rates overcharges identified earlier this year, with affected ratepayers receiving an automatic credit adjustment in instalment 4 of the 2025/26 rating year.

In February, the Council advised the community of an issue in how General Rates were calculated for 2025/26, after updated property valuations supplied by Quotable Value (QV) were loaded into its rating system. While residents' rates bills included the updated property valuations, the way in which the Council calculated the General Rate factor did not include the updated property valuation.

As a result, some ratepayers were charged more than they should have been, through instalments 1, 2, and 3 of the 2025/26 rating year. Though the exact amount varies by property, most residential properties were overcharged by an average \$85 for the full year, and rural properties, which generally experienced larger valuation increases, were overcharged by an average \$500 for the full year.

At the time the error was found, Mayor Lydia Gliddon said the Council's priority was transparency and fairness. "When something isn't right, we need to front it, fix it, and make sure it doesn't happen again.

"Residents deserve complete confidence in how their rates are set. Bringing in an independent review is the right step to confirm facts, correct the impact and give our community assurance that every step is being taken to fix the issue and put stronger safeguards in to prevent it happening again."

Ratepayers do not need to take any action, as the adjustment will be made automatically to affected accounts. Instalment 4 will show a reduced amount to offset any earlier overcharge. Instalments 1, 2 and 3 will not change on invoices.

Interim Chief Executive Steve Gibling said the Council's continued focus is on accuracy and restoring trust.

"Our team takes this matter extremely seriously. We acted quickly once the issue was identified and have brought in external experts to ensure every calculation is validated. I'm proud that we have been able to make the necessary corrections and credit adjustments for residents promptly and accurately."

Invoices for instalment 4 will be sent out from Friday 24 April.

## THE ARTFUL USE OF LINES



Did you know there's an Art Gallery in Lincoln? Each month Down By The Liffey Gallery features a selection of talented artists in an exciting exhibition.

This month's exhibition 'The Artful Use of Lines' is on display from 7th May to 31st May. Featuring artists Justine Jensen and Hayley Landreth as they explore nature and landscapes through their individual styles, using a combination of lines within their compositions to create visual intrigue.

**Opening hours are:**

11.30am - 2.30pm Thursday.

10am - 4pm Friday to Sunday.

Down By The Liffey Gallery,  
1 James St, Lincoln



## UPCOMING LINCOLN ENVIROTOWN EVENTS

We are thrilled to share our upcoming lineup of workshops and discussions that reflect our commitment to a sustainable future. View tickets for all these initiatives by [searching Lincoln Envirotown on Humanitix](#)



### Mahoe Reserve Working Bees

2pm – 4pm,  
Sunday, 3rd May | Sunday 7th June | Sunday, 5 July.

@ Mahoe Reserve, Boundary Road, Lincoln

Come along and help us in the restoration and maintenance of the Mahoe Native Reserve in Lincoln from 2pm onwards. We need to start preparations for the planting on Sunday, 5th July, so we have planned several working bees.



### ReDiscover Repair Café

10am – 1pm, Saturday 23rd May  
@ Pines Resource Recovery Park

We are planning to fix Bikes, Clothing, Electronics, Jewellery, Household Appliances and Knife Sharpening.



### Selwyn Trap Library

10am - 12pm, Saturday 30th May  
@ Lincoln Farmers & Craft Market

Come and see us for free trap hire and advice. We will lend you the right type of trap to remove pests like rats, hedgehogs, possums, and stoats. We can also advise you on bait and the best location for your trap. The library is usually open on the last Saturday of every month.



### Part-Time Employment Opportunity Business Assessor

We are looking for an assessor for Lincoln Envirotown Trust's Responsible Business Network for all areas of Selwyn.

This is a part-time fixed-term position that will run from the end of May to early November, to undertake the assessment of businesses by making site visits and recording data, as well as assisting in the organisation of the awards presentation evening. Please note that during this time, a commitment averaging 15 hours a week will be required. This is an independent contractor role with flexible work times determined by the

appointee and the requirements of the businesses.

The deadline for applications is Monday, 18th May 2026. Please send a CV with a short letter to Maree Hamilton at [rbacoordinator@gmail.com](mailto:rbacoordinator@gmail.com). More information about this position can be obtained by emailing or calling Maree on 022 438 4496.

**It is important that any applicant is a resident of Selwyn District and is legally permitted to work in New Zealand.**

## FEATURED EVENTS



### Science & Solutions

1:00pm – 2:30pm, Wednesday 13 May  
@ S2, Stewart Building, Lincoln University

Join leading researchers for an insightful session on “Reducing Nitrous Oxide: Science and Solutions for a Low-Emissions Future.” As part of Lincoln University’s commitment to sustainable land use, this talk explores how evidence-led planning and new technologies are helping shape the future of Canterbury’s farming and environment.



### Selwyn Stars Talent Search

6:00pm – 8:00pm, Friday 16 May  
@ Lincoln Event Centre

Can you sing, dance, or play an instrument? The Selwyn Stars Talent Search hits Lincoln for the regional heats! This is a fantastic opportunity for local performers to showcase their skills in front of a live audience. Whether you’re competing or just coming to support our local talent, it’s set to be a night of high-quality entertainment.



### Selwyn Marathon 2026

7:30am – 2:00pm, Sunday 31 May  
@ Lincoln Event Centre

The Urban Estates Selwyn Marathon returns on King’s Birthday weekend. This flat, fast course takes runners through the heart of Lincoln, the surrounding countryside, and even through the scenic Rossendale Wines. With Full Marathon, Half Marathon, and 10km options, it’s a great challenge for all fitness levels. Come down to cheer on the athletes at the finish line!

## AROUND YOU



### Dancing Through the Decades

6:30pm – 8:00pm  
Saturday 9 May  
@ Lincoln Event Centre



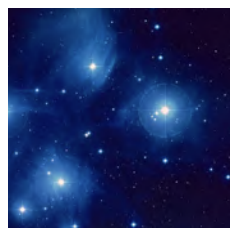
### Mother’s day reminder

Saturday 10 May



### NZ Music Month: Music with Michal

11:20am – 12:00pm  
Saturday 10 May  
@ Te Ara Ātea



### Matariki Community Star Gazing

6:00pm – 7:30pm,  
Friday 19 June  
@ Lincoln Domain



## MUSIC AT THE LABORATORY

Our Sunday Music Sessions run every Sunday from 3– 5pm

Sun 3 May – Fly by Night

Sun 10 May – Hazel Brown (Mothers Day)

Sun 17 May – Jack Thomson

Sun 24 May – Leah Kelsey

Sun 31 May – Nick Jackman

Come on down and enjoy the good food, good brews and good tunes!



## Down By The Liffey Gallery

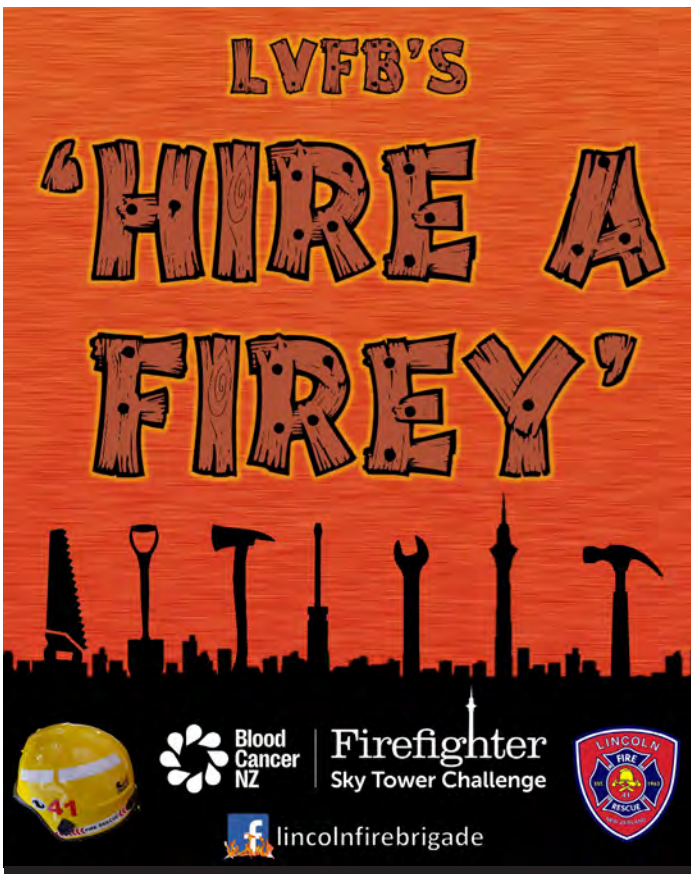
Opening hours: 11.30am – 2.30pm Thursday

10am – 4pm Friday to Sunday

Down By The Liffey Gallery, 1 James St, Lincoln

Discover the intersection of nature and structure in our latest exhibition featuring Justine Jensen and Hayley Landreth. Both artists explore landscapes through their distinct styles, utilizing a combination of intricate lines and thoughtful compositions to create visual intrigue.

May 7 - May 31



Have any jobs around your place that have been on your to-do list forever?

Why not “Hire-A-Firey”

In just over a month (May 23), 7 of our crew are climbing the Auckland Skytower all in the name of Blood Cancer NZ.

We'd love to help you knock off those jobs in exchange for a donation of your choosing.

How is it May already?! As the days get cooler, there's no better place to be than tucked up in our warm and cosy wee cinema, The Apollo—complete with our much-loved nana rugs to keep you snug.

This month brings a fantastic mix of films to the big screen, from exciting new releases to some must-see favourites. Whether you're looking for a relaxed outing, a catch-up with friends, or just an excuse to get out of the cold, we've got something for everyone.

Settle in, get comfortable, and take a look at what's coming up this May—we can't wait to see you at The Apollo!



**Michael**  
*Biography / 22 Apr*

Follow the story of “King of Pop” Michael Jackson, played by his real-life nephew Jaafar Jackson. From his childhood leading The Jackson 5, through times of abuse by his father, to becoming a global superstar, blending personal moments with iconic early solo performances. Discover the making of a king.



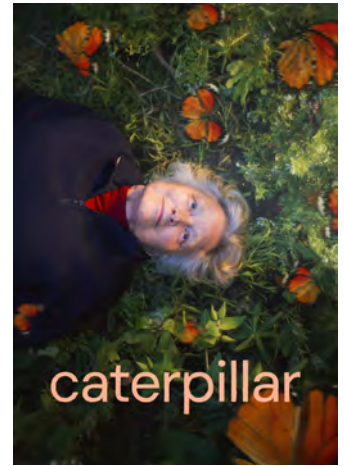
**The Devil Wears Prada 2**  
*Comedy / 30 Apr*

The wait is over! Nearly twenty years after their iconic roles as Miranda, Andy, Emily and Nigel, Meryl Streep, Anne Hathaway, Emily Blunt and Stanley Tucci return to the fashionable streets of New York City and the sleek offices of Runway magazine.



**The Sheep Detectives**  
*Family Comedy / 7 May*

When their beloved shepherd George Hardy is found dead, a flock of mystery-loving sheep decide to solve the crime themselves. But leaving their peaceful meadow to investigate the human world proves far more complicated than the murder stories they've been listening to! Starring Hugh Jackman & Emma Thompson.



**Caterpillar**  
*Drama / 14 May*

Caterpillar follows three generations of women living under one leaky roof. When a grandmother's mind begins to betray her, the family is drawn into a journey of love, loss and transformation—alongside her lifelong fascination with monarch caterpillars and their remarkable butterfly migration.



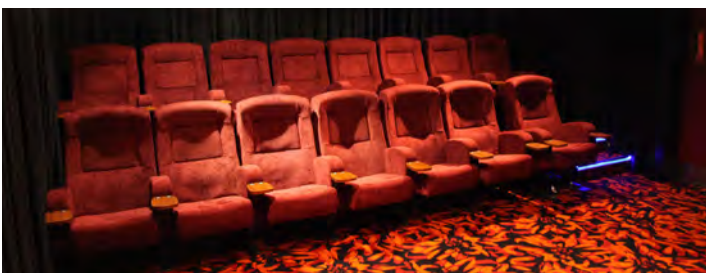
**Tuner**  
*Crime / 28 May*

A talented piano tuner's precision leads to an unexpected skill: cracking safes. What begins as curiosity soon draws him into a dangerous world, turning his life upside down. Blending suspense with a compelling romance, this is a gripping thriller that will keep you hooked!



**The Christophers**  
*Comedy / 4 Jun*

The estranged children of a once-famous artist hire a forger to complete his unfinished works, planning to “discover” and sell them after his death—until deception and family tensions threaten to unravel their scheme.



**APOLLO**  
LINCOLN

THE LABORATORY - 17 WEST BELT - LINCOLN  
apollo.thelaboratory.co.nz



## Parents, help your child read and write with confidence

Word Whizz makes it easy for Kiwi parents to boost their child's early literacy skills, helping them catch up or excel in reading and writing.

14-Day Free Trial - [wordwhizz.co.nz](http://wordwhizz.co.nz)

★ Builds reading fluency ★ Strengthens spelling foundations

## USEFUL CONTACTS

Art Group of Lincoln	Faye 347 3399
Community Garden	021 074 3905
Death Café Lincoln	020 425 0369
Down by the Liffey Gallery	325 2877
Ellesmere Badminton Club	027 325 2044
Ellesmere Indoor Bowls	325 3143
Ellesmere Probus Club	325 6165
Junior Enviro Action Group	027 307 0767
Kaituna Golf Course	027 477 9425
Liffey Toastmasters	027 955 7996
Lincoln Badminton Club	347 9707
Lincoln Bowling Club	325 2289
Lincoln Bridge Club	325 3222
Lincoln Business Assn	325 2039
Lincoln Community Care	325 2007
Lincoln Cricket Club	029 240 0093
Lincoln & Districts Historical Soc.	325 3320
Lincoln Envirotown	329 5858
Lincoln Farmers Market	329 5757
Lincoln Girl Guides	027 462 8871
Lincoln Golf Club	325 2453
Lincoln ICONZ	347 8722
Lincoln Indoor Bowls	347 3212
Lincoln Masonic Lodge	349 9905
Lincoln Men's Shed	linolnmensshed@gmail.com
Lincoln Netball Club	lincolnnetballsecretary@gmail.com
Lincoln Outdoor Bowls	325 2289
Lincoln Patchwork and Quilting	021 129 2833
Lincoln Plunket	325 2179
Lincoln Rugby Club	027 303 1879
Lincoln Scottish Dance Club	3497126
Lincoln Scouts	021 258 5680 (text)
Lincoln Table Tennis Club	325 7694
Lincoln Tennis Club	lincolnintennisnz@gmail.com
Mother4Mother	357 4970
Rotary Club of Lincoln	029 999 8330
Selwyn Lions	325 7957
Selwyn Parenting Network	021 166 8603
Selwyn Printing Co.	741 3049
Senior Citizens Club	027 712 7195
SeniorNet	027 547 4793
Spinning/Knitting Group	325 3320
Springs Day Club	329 5634
Springston Evening Garden Club	344 5781
Springston Garden Club (daytime)	325 5002
St Patricks Craft and Friendship Group	027 334 1151
Tai Tapu Garden Club	329 6268
Time Banking	423 0456
Toy Library	021 044 2407
U3A Ellesmere	028 415 4961
Community Dental	0800 846 983
Healthline	0800 611 116
Lincoln Comm. Response	325 7732
Lincoln Library	347 2876
Lincoln Police	378 0160
Lincoln Fire Station	325 2801
Nurse Maude	375 4200
Selwyn Community Patrol	info@selwyncommunitypatrol.org.nz



**BRIDGESTONE** **TYRE CENTRE**  
**LINCOLN**

📍 23 Gerald Street, Lincoln

☎ 03 325 2129 🌐 [fb.com/bridgestonelincn](https://fb.com/bridgestonelincn)