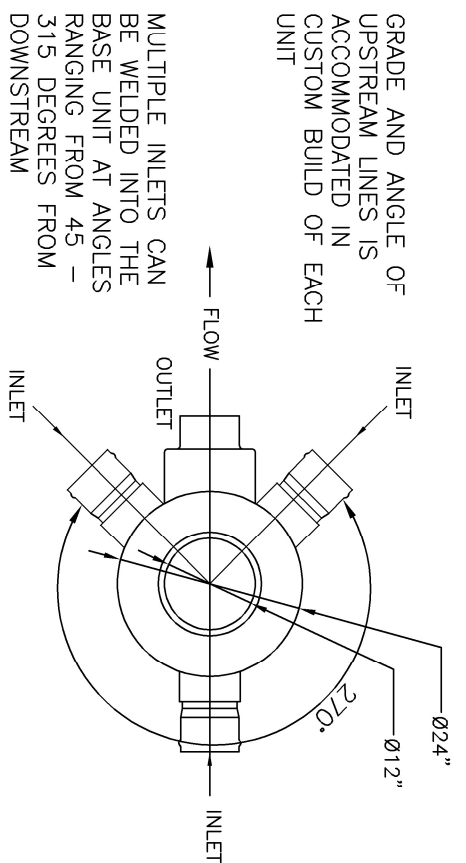
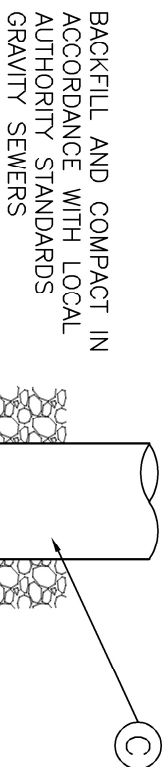
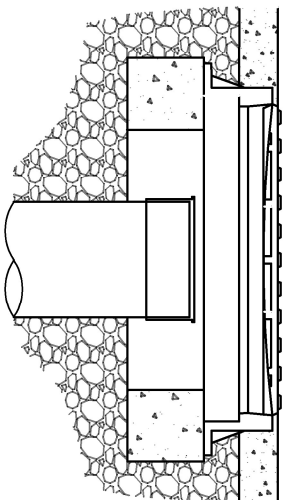


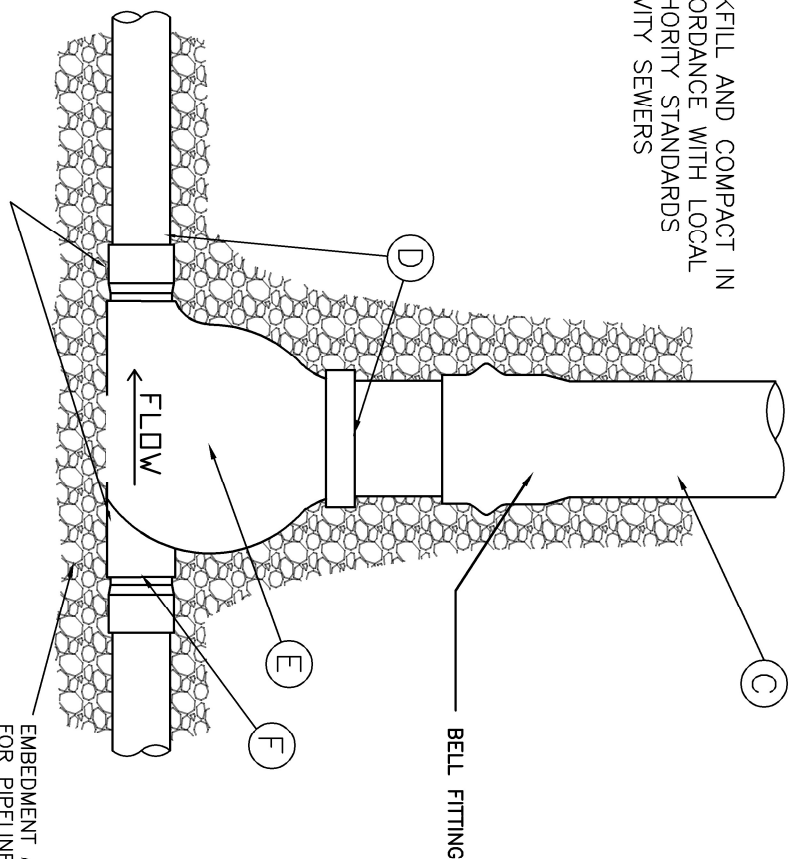
ENHANCED VIEW OF GRADE SIDE PROFILE



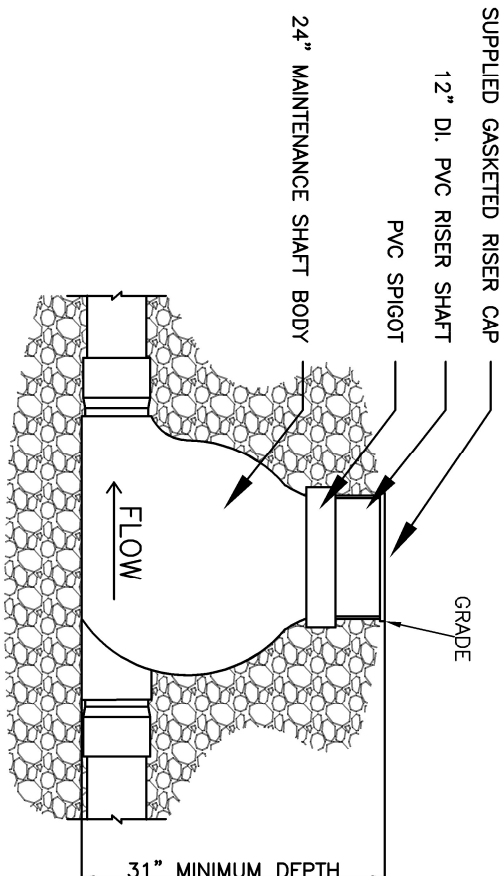
PLAN VIEW
(SHOWS RANGE OF UPSTREAM ANGLE)



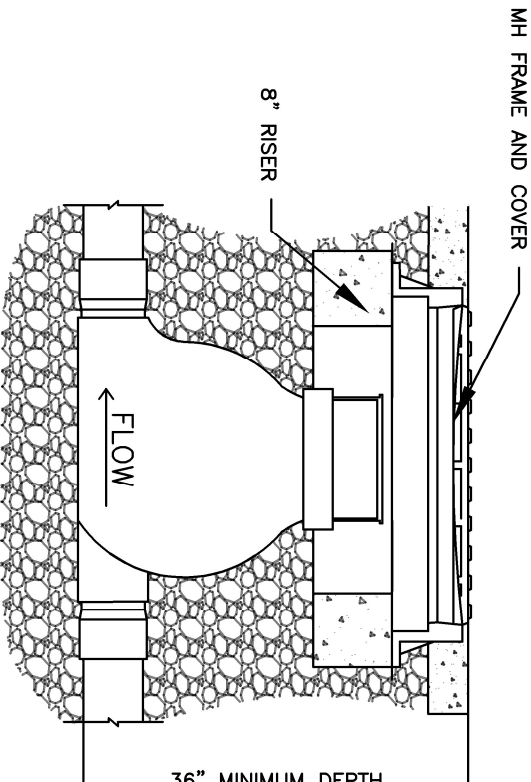
BACKFILL AND COMPACT IN
ACCORDANCE WITH LOCAL
AUTHORITY STANDARDS
GRAVITY SEWERS



GRADE THROUGH MAINTENANCE SHAFT IS
0.50% MINIMUM SIDE ELEVATION



MINIMUM DEPTH RISER CAP ONLY



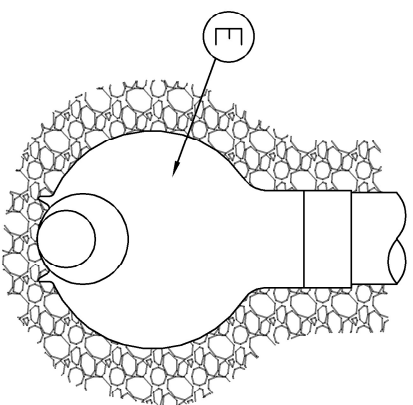
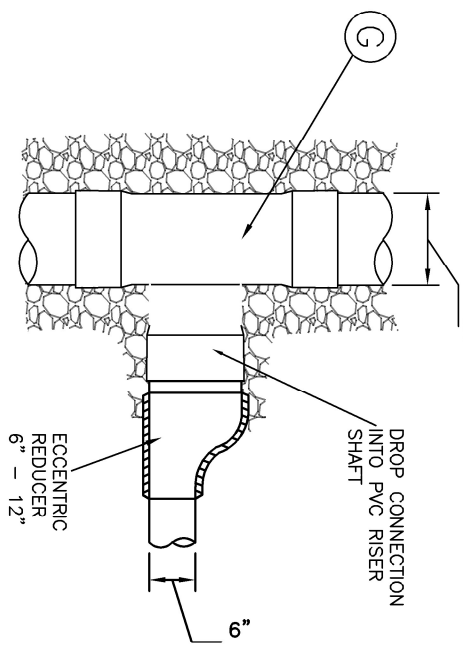
MINIMUM DEPTH WITH CAST IRON FRAME AND COVER

ITEM	DESCRIPTION	MATERIAL
A	GASKETED LOCKING VERTICAL RISER CAP	PVC
B	8" RISER	-
C	ø12" PVC RISER SHAFT (SUPPLIED BY OTHERS)	PVC
D	PVC SPIGOT	PVC
E	24" MAINTENANCE SHAFT BODY	POLYETHYLENE
F	PVC SPIGOT (6", 8", 10" OR 12")	PVC
G	12" PVC TEE	PVC
H	MH FRAME & COVER	-

COMPONENTS

GENERAL NOTES

1. ALL DIMENSIONS IN INCHES
2. MAINTENANCE SHAFTS CAN ACCOMMODATE MOST CONNECTION TYPES FOR 6"– 12" PIPE, REFER TO MANUFACTURER FOR DETAILS.
3. BACKFILL AND COMPACTION IN ACCORDANCE WITH LOCAL AUTHORITY INSTRUCTIONS FOR GRAVITY SEWERS
4. CONTRACTOR TO SUPPLY PIPE FROM MAINTENANCE SHAFT TO VERTICAL RISER CAP.
5. CAPABLE OF 12"+ DROPS DEPENDING ON INLET SIZE
6. 4" – 6" AIR GAP WHEN USING FRAME AND COVER (SEE 'ENHANCED VIEW OF GRADE SIDE PROFILE')
7. RECOMMEND ECCENTRIC REDUCERS WHEN USING T-FITTINGS FOR DROP CONNECTIONS
8. FOR FRAME & COVER AND RISER RING INSTALLATION, FOLLOW MANUFACTURER INSTALLATION INSTRUCTIONS
9. CONCRETE RISER RING SUGGESTED FOR HIGH WATER TABLES^{12"}



EXAMPLE OF DROP JUNCTION INTO RISER SHAFT

ISSUE	DATE	REVISION	DRN	CHKD	<p>POOPITTM</p> <p><i>This drawing is the property of QuickStream Solutions Inc and shall not be copied or altered with permission</i></p>		
					DO NOT SCALE FROM DRAWING		DRAWN BY: NG DATE: 06.16.2025
					SCALE: DIAGRAMMATIC	CHECKED BY: RM DATE: 06.16.2025	ALL DIMENSIONS ARE IN INCHES
					<p>TYPE 8 MAINTENANCE SHAFT (POO PIT)</p> <p>GENERAL INSTALLATION</p>		
					DRAWING REF: SST-0006-A	SHEET : 1 OF 1	ISSUE : A
					<p>ANSI B</p>		