

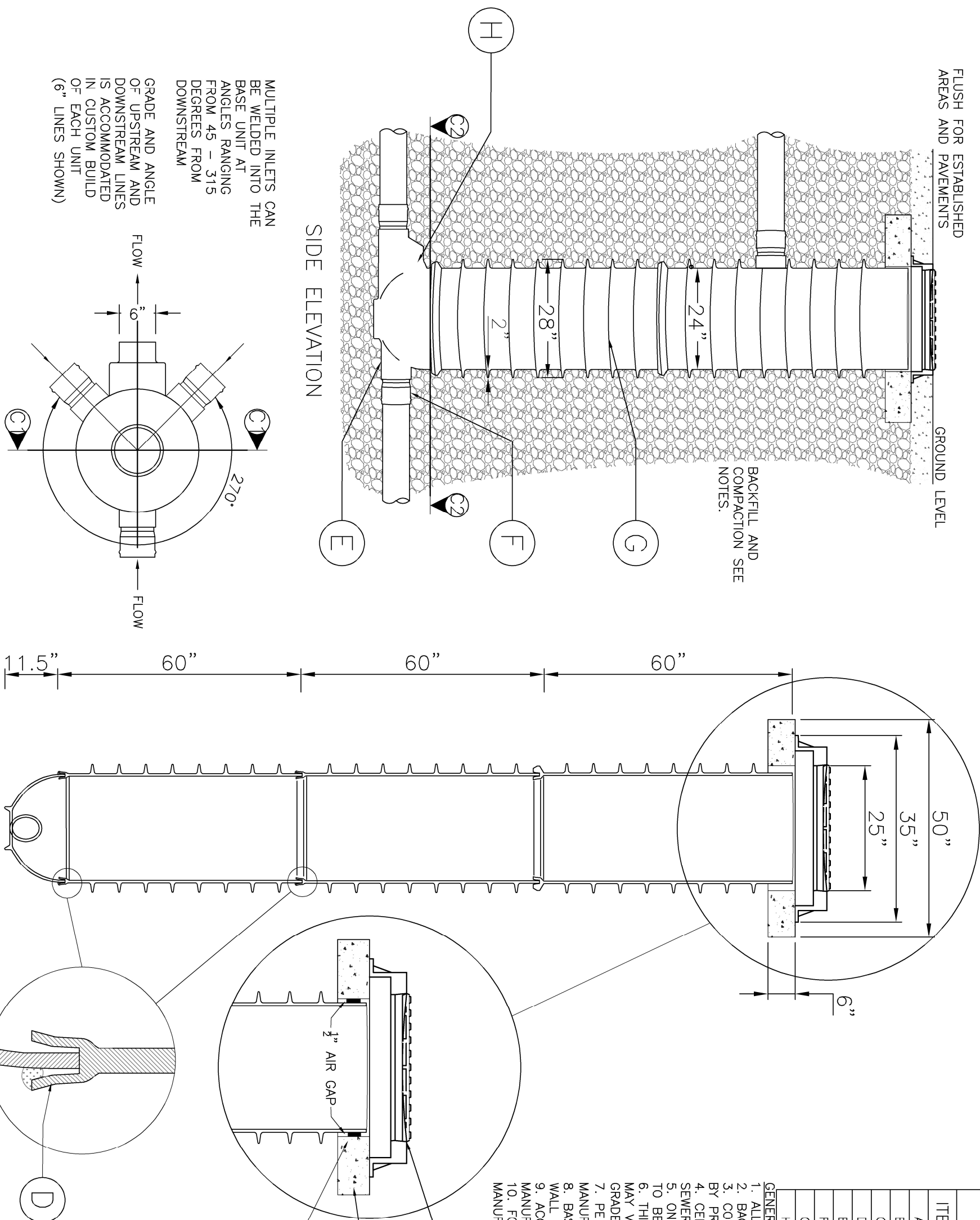
COMPONENTS		
ITEM	DESCRIPTION	MATERIAL
A	MH FRAME & COVER	-
B	6" PRECAST CONCRETE CONVERSION SLAB	-
C	SIKAFLEX SEALANT OR SIMILAR	POLYURETHANE SEALANT
D	P.E. WELD	POLYETHYLENE
E	PE SPIGOT (6", 8", 10" OR 12")	POLYETHYLENE
F	PVC SPIGOT (6", 8", 10" OR 12")	PVC
G	24" P.E. MINI PIT LINER	POLYETHYLENE
H	24" DIA. MINI PIT BASE	POLYETHYLENE

COMPONENTS

ITEM	DESCRIPTION	MATERIAL
A	MH FRAME & COVER	-
B	6" PRECAST CONCRETE CONVERSION SLAB	-
C	SIKAFLEX SEALANT OR SIMILAR	POLYURETHANE SEALANT
D	P.E WELD	POLYETHYLENE
E	PE SPIGOT (6", 8", 10" OR 12")	POLYETHYLENE
F	PVC SPIGOT (6", 8", 10" OR 12")	PVC
G	24" P.E MINI PIT LINER	POLYETHYLENE
H	24" DIA. MINI PIT BASE	POLYETHYLENE

GENERAL NOTES

1. ALL DIMENSIONS ARE IN INCHES
2. BACKFILL AND COMPACTION IN ACCORDANCE WITH LOCAL AUTHORITY
3. CONVERSION SLAB AND ADJUSTMENT SEGMENTS TO BE SUPPLIED SEPARATELY BY PREFERRED DISTRIBUTOR
4. CENTRE POINT OF ACCESS CHAMBER TO BE ON INTERSECTION POINT OF SEWERS
5. ONLY ACCESS CHAMBERS AND COMPONENTS APPROVED BY LOCAL AUTHORITY TO BE USED
6. THIS DRAWING IS AN EXAMPLE DRAWING. THE DETAILS OF SOME CHAMBERS MAY VARY FROM THOSE SHOW IN THE DRAWING WITH INLETS ADDED AT ANY GRADE AND ANGLE ON THE BODY AND LINER
7. PE WELDING TO BE CARRIED OUT BY ACCREDITED PERSONNEL ONLY (REFER TO MANUFACTURER FOR DETAILS)
8. BASE, LINERS AND REDUCER COMPONENTS ROTOMOULDED FROM MDPE 0.59" WALL THICKNESS
9. ACCESS CHAMBERS SHALL BE INSTALLED IN ACCORDANCE WITH MANUFACTURERS INSTRUCTIONS
10. FOR FRAME & COVER AND CONVERSION SLAB INSTALLATION, FOLLOW MANUFACTURER INSTALLATION INSTRUCTIONS



MULTIPLE INLETS CAN
BE WELDED INTO THE
BASE UNIT AT
ANGLES RANGING
FROM 45 – 315
DEGREES FROM
DOWNSTREAM

GRADE AND ANGLE
OF UPSTREAM AND
DOWNSTREAM LINES
IS ACCOMMODATED
IN CUSTOM BUILD
OF EACH UNIT
(6" LINES SHOWN)

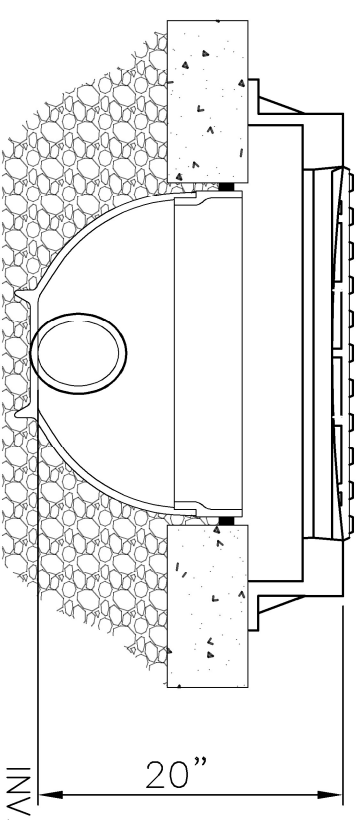
SIDE ELEVATION

SECTION 'C2' - 'C2'

MAX DEPTH 25'
SECTION 'C1'-'C1'

MAX DEPTH 25

MINIMUM HEIGHT




三

Minipie™

ISSUE	DATE	REVISION	DRN	CHKD

This drawing is the property of Quickstream Solutions Inc. and shall not be copied without permission

DO NOT SCALE FROM DRAWING		DRAWN BY: NG	DATE: 06.18.2025	24" MINI ACCESS CHAMBER GENERAL INSTALLATION - TRAFFICABLE	DRAWING REF: QS-MINIPT	SHEET: 1 OF 1	ISSUE: D	ORIGINAL SHEET SIZE ANSI B
		CHECKED BY: RM	DATE: 06.18.2025					
SCALE: DIAGNOSTIC		ALL DIMENSIONS ARE IN INCHES						