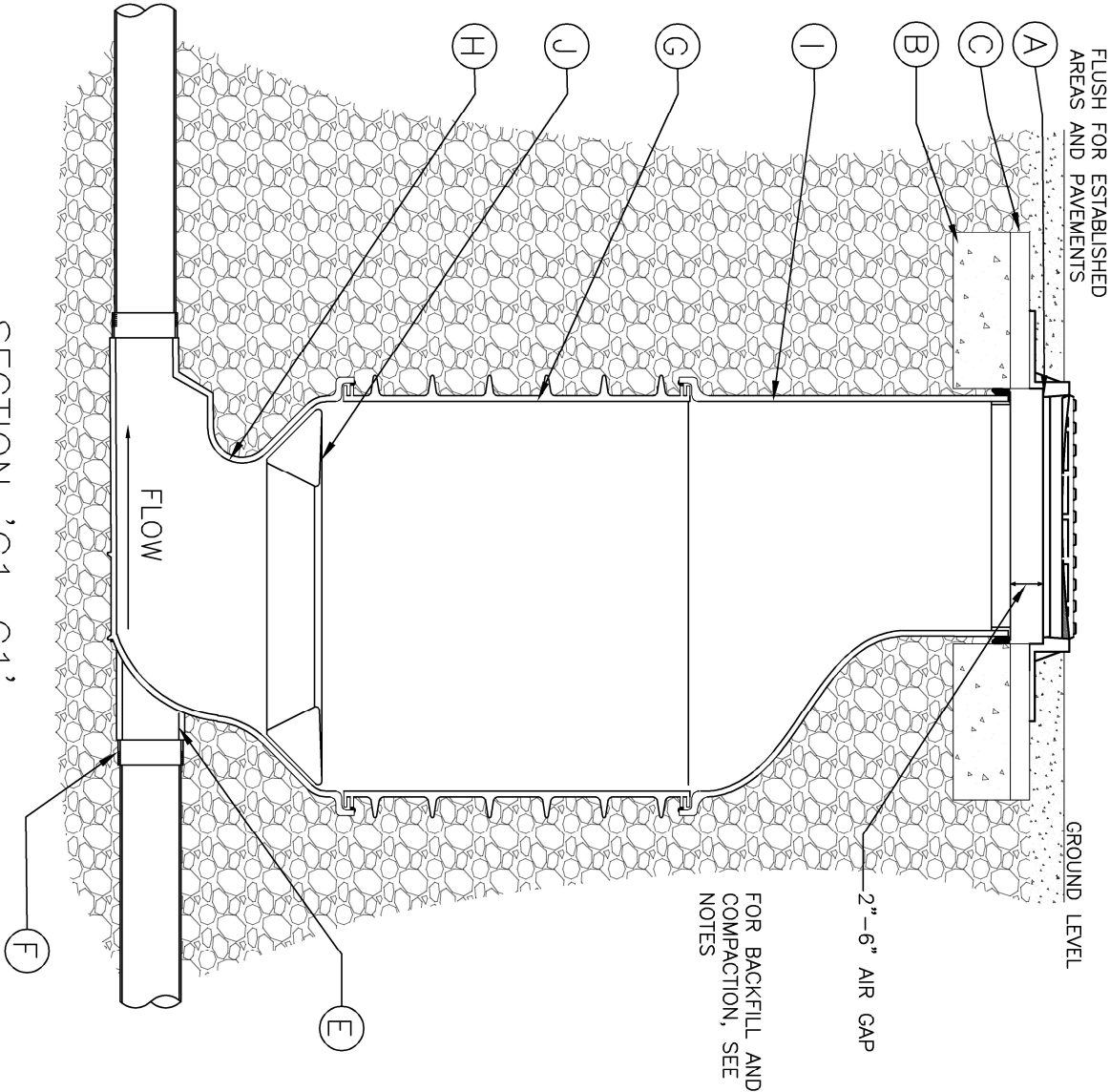
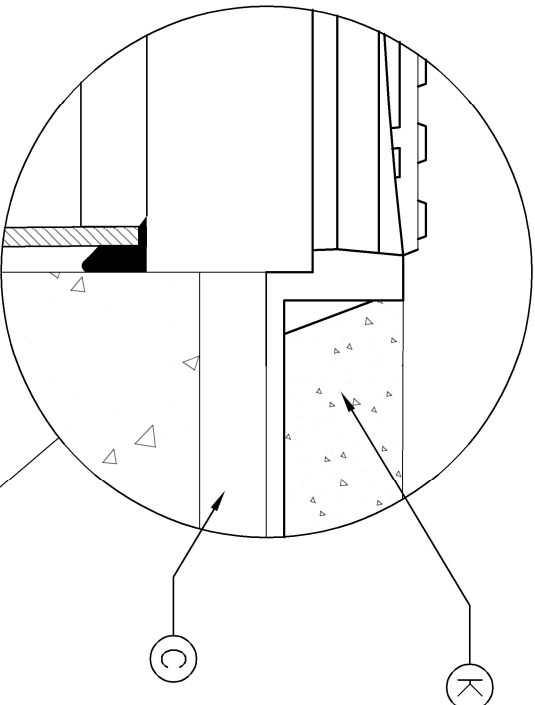
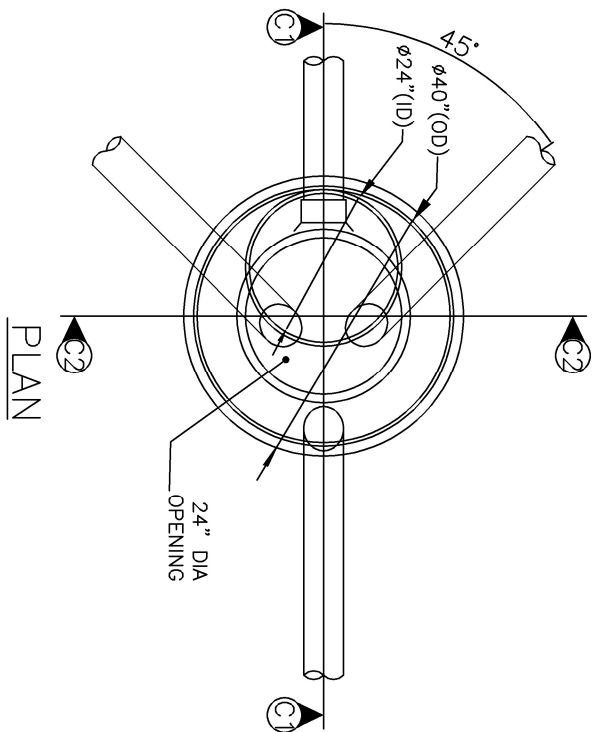
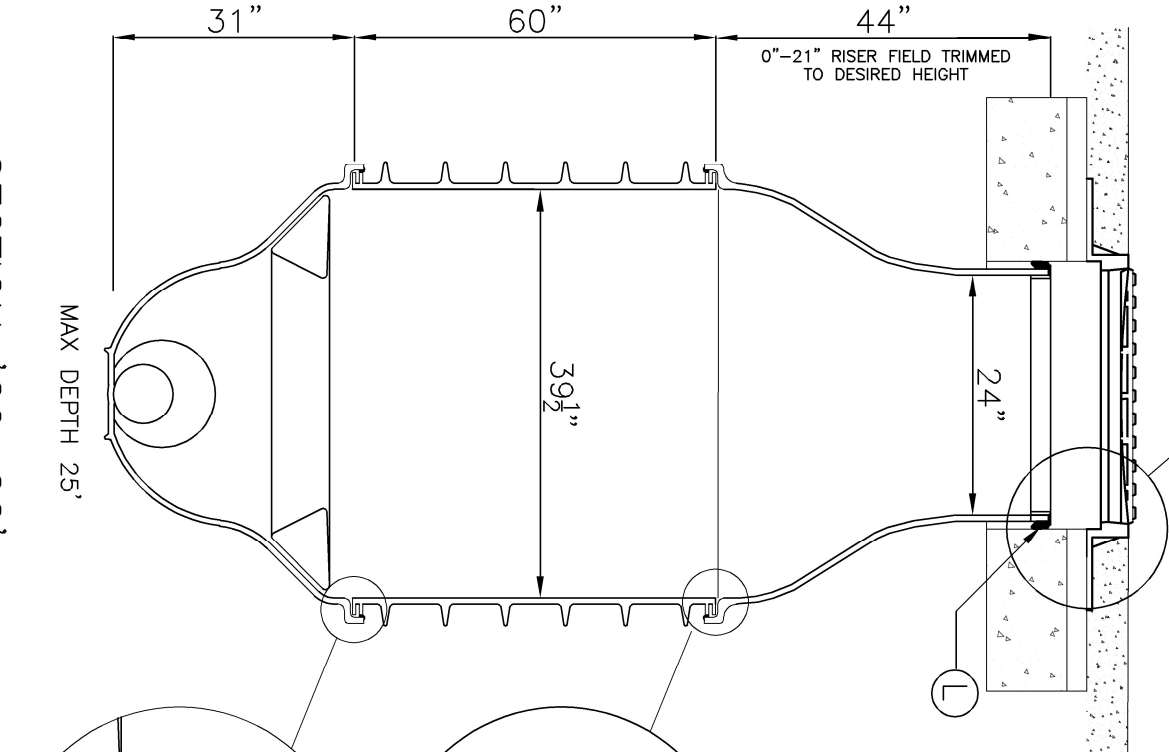


MULTIPLE INLETS CAN BE WELDED INTO THE BASE UNIT AT ANGLES RANGING FROM 45°-315° FROM THE DOWNSTREAM

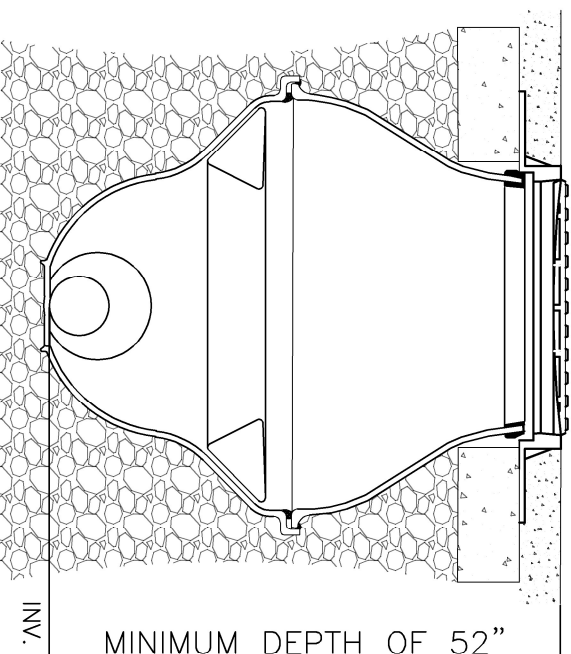
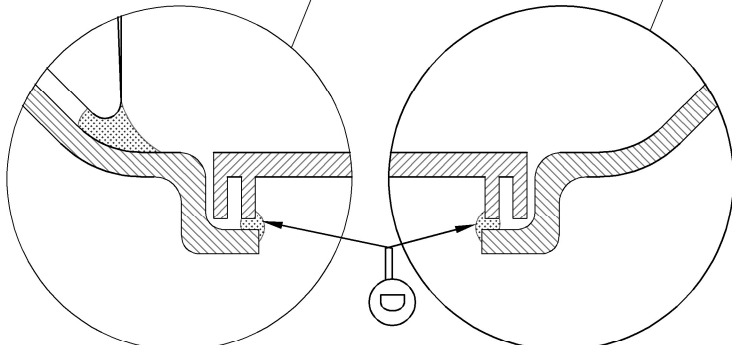
GRADE AND ANGLE OF UPSTREAM AND DOWNSTREAM LINES IS ACCOMMODATED IN CUSTOM BUILD OF EACH UNIT



SECTION 'C1-C1'



SECTION 'C2-C2'



MINIMUM HEIGHT

COMPONENTS

ITEM	DESCRIPTION	MATERIAL
A	24" NOMINAL SIZE C.I./D.I. COVER	-
B	6" CONVERSION SLAB	-
C	2" RISER RING	-
D	P.E WELD	POLYETHYLENE
E	PE SPIGOT (6", 8", 10" OR 12")	POLYETHYLENE
F	PVC SPIGOT (6", 8", 10" OR 12")	PVC
G	38" DIA. P.E SMART PIT LINER	POLYETHYLENE
H	38" DIA. SMART PIT BASE	POLYETHYLENE
I	SMART PIT TAPER TOP	POLYETHYLENE
J	FACTORY INSTALLED 360° PE BENCH	POLYETHYLENE
K	6" SURROUND	-
L	SIKAFLEX SEALANT OR SIMILAR	-

GENERAL NOTES

1. ALL DIMENSIONS ARE IN INCHES
2. LADDERS SHALL BE AVAILABLE UPON REQUEST.
3. CONCRETE SHALL BE GRADE N25.
4. CONVERSION SLAB AND ADJUSTMENT SEGMENTS TO BE SUPPLIED SEPARATELY.
5. CENTRE POINT OF ACCESS CHAMBER TO BE ON INTERSECTION POINT OF SEWERS.
6. ONLY ACCESS CHAMBERS AND COMPONENTS APPROVED BY LOCAL AUTHORITY SHALL BE USED. THIS DRAWING IS AN EXAMPLE DRAWING. THE DETAILS OF SOME CHAMBERS MAY VARY FROM THOSE SHOW IN THE DRAWING.
7. PE WELDING TO BE CARRIED OUT BY ACCREDITED PERSONNEL ONLY (REFER TO MANUFACTURER FOR DETAILS)
8. MANHOLE CAN BE ADJUSTED BY CUTTING CONVERSION TO REQUIRED HEIGHT USING STANDARD CUTTING EQUIPMENT.
9. BASE, LINERS AND REDUCER COMPONENTS ROTOMOULDDED FROM MDPE 0.6" WALL THICKNESS.
10. ACCESS CHAMBERS SHALL BE INSTALLED IN ACCORDANCE WITH MANUFACTURERS INSTRUCTIONS.
11. BACKFILL AND COMPACTION IN ACCORDANCE WITH LOCAL AUTHORITY INSTRUCTIONS OF WHERE THE PRODUCT IS TO BE INSTALLED.
12. FOR FRAME & COVER AND RISER RING INSTALLATION, FOLLOW MANUFACTURER INSTALLATION INSTRUCTIONS