



# Sealing Technology for Rotating Equipment

High quality sealing systems for pumps, compressors, agitators and other machines  
Innovative and customized technology for challenging applications

**METAX**  
**DIE DICHTUNG.**

Machine element with high duty function

# Mechanical Seal in Action

METAX mechanical seals are hardly visible in the machine  
but they fulfill the customer's request:

- Process of the plant is running
- Environment is protected
- People are protected against hazardous fluids

Mechanical seals and supply systems work together as a sealing system.  
METAX products are well designed for the individual application and together  
with innovative monitoring technology our customers get the highest level  
of predictive maintenance in the plant.



Standard mechanical seals as a

# Component

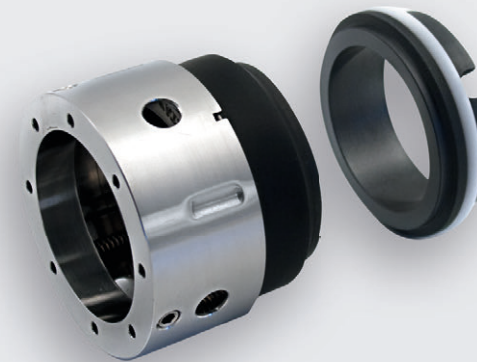
Installation space according  
DIN EN 12756

Not balanced or balanced

Single spring or group springs

With elastomer bellow or metal bellow

Customized solutions, single pieces or series



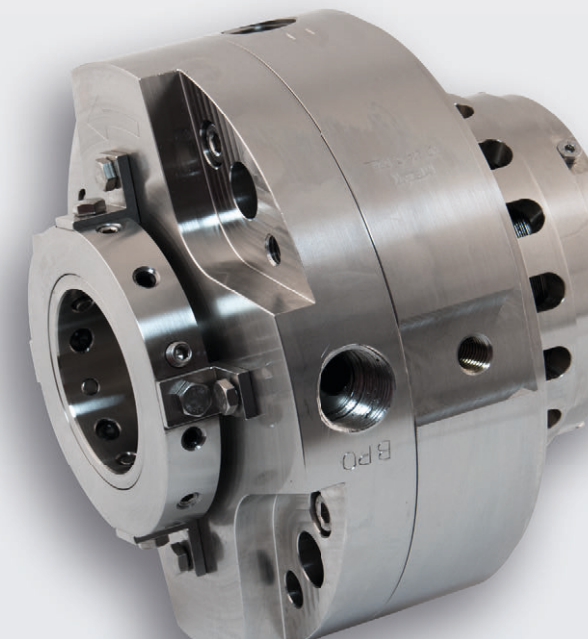
Special mechanical seals

# Engineered

depending on the application  
according to API 682, ATEX, DIN, EHEDG, 3A, FDA

Problem solver for special sealing requirements

Improvement of life time



Users perspective

## Your Benefit

- ✓ High operating safety
- ✓ High availability of the plant by minimizing the downtime
- ✓ Simple and cost-efficient maintenance
- ✓ Fulfilling of environmental requirements
- ✓ Sustainable usability of the machines by conversion to improved equipment

» Solutions are developed by dialogue –  
the METAX team stands up for that «

User benefits through technology

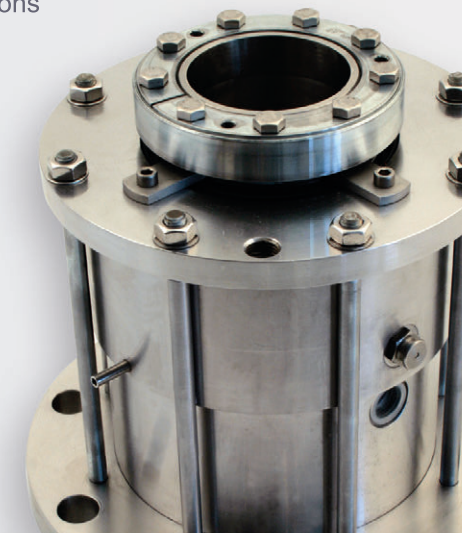
## METAX – Seals

- ✓ Timely recognition of wear through innovative monitoring technology
- ✓ Assurance of favorable operation conditions
- ✓ Redundant systems
- ✓ Pre-assembled units
- ✓ Premature detection of changing operation parameters
- ✓ Conversion of pumps to changed operation conditions
- ✓ Conversion of mechanical seals for the reduction of emission levels

Mixing applications

## Agitator Seals

- Designs for top-, side- and bottom drive
- Designs with integrated bearings
- Optional additional devices
- Customized solutions



Double seals

## Supply Systems

- Complete designs according API 682 and according customer specification
- Making of the barrier pressure and circulation of the barrier fluid
  - Storage and cleaning of the barrier fluid
  - Cooling of the barrier fluid
  - Equipment with monitoring sensors







## **METAX Kupplungs- und Dichtungstechnik GmbH**

Unter den Linden 34  
35410 Hungen-Obbornhofen  
Germany

☎ +49 (0) 6036 97 33 - 0  
📠 +49 (0) 6036 97 33 - 18  
✉ [info@metax-gmbh.de](mailto:info@metax-gmbh.de)  
🌐 [www.metax-gmbh.de](http://www.metax-gmbh.de)

Rev. 1.1