

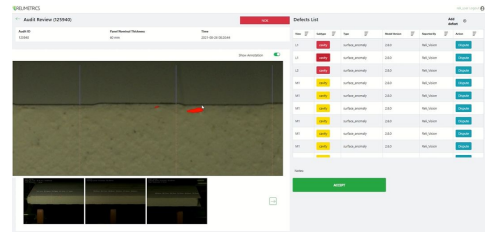
PANEL INSPECTION

ABOUT RELIMETRICS

Relimetrics is part of the Industry 4.0 movement, helping companies to digitally transform. Relimetrics is a platform solution applicable to numerous industries, including automotive, manufacturing, electronics and construction. Our software uses computer vision and machine learning to automate inspections and perform predictive maintenance. This increases productivity, cuts costs and helps companies to innovate at a more rapid rate.

OUR CUSTOMER

Covestro is a leading global supplier of innovative polymers used in nearly every part of modern life across industries and products. It is helping its own customers to innovate and create better products by designing better performing materials and modernizing manufacturing.



Assembly issues flagged on the HMI can be disputed by an operator. The information is filtered and used for retraining with Relimetrics in-line retraining technology.

CHALLENGE

Strict quality demands in the construction industry puts high pressure on panel suppliers to deliver quality assured products.

Visual inspections are slow, subjective and often prone to errors, making defects undetectable until panels show signs of tear and wear while in use. Extraction of defective panels is costly, and expose the panel suppliers to fines and other liabilities.

Identifying the root cause of defects poses an additional challenge due to lack of understanding of correlation between machine, process and quality parameters.

SOLUTION

Relimetrics solution digitizes quality inspection of polymer panels using **ReliVision** and provides a full overview of quality before the products leave the shop floor.

The system can be used to inspect a variety of quality parameters in the manufactured panels, including panel alignment, thickness, and surface anomalies, such as cavities and voids.

The deployed system also integrates with the shop floor MES, and offers the customer additional value metrics to improve its manufacturing and quickly detect quality drifts.

For more details, visit our [Insight.tech](#) article.

IMPACT



1s

Inspection time for a whole panel



Full traceability

More accurate way to determine root cause of defects



>99.9%

Probability of detection