

AURA



CAPITOL
CONSTRUCTIONS

AURA

Choose "aura" as your home and make an exceptional life choice.

This exclusive nine floor boutique project is a true gem that redefines sophistication. With unmatched construction quality and premium finishes, every 3-bhk apartment enhances your living experience.

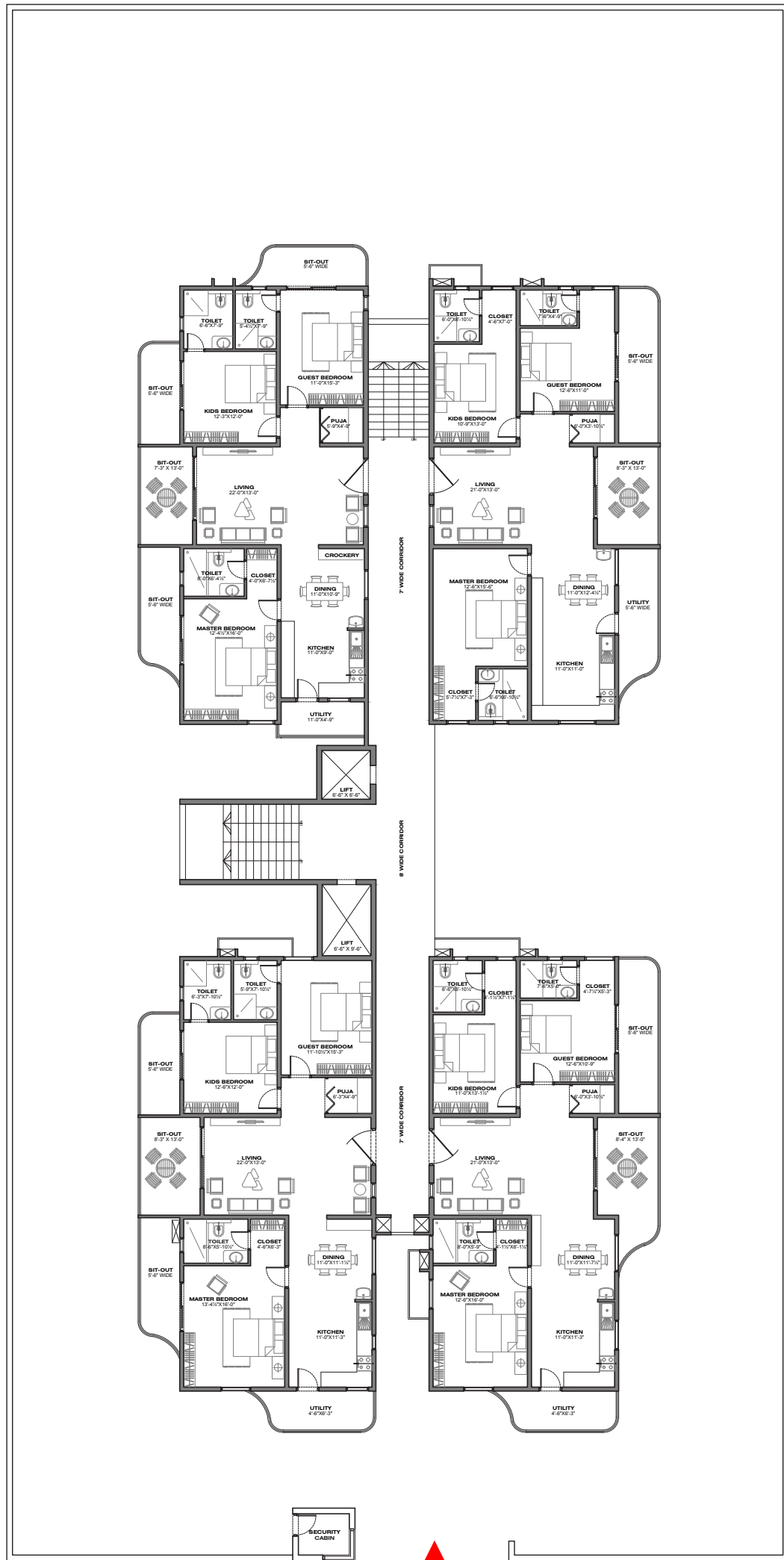
Each family member enjoys their own private spaces, while the spacious living and dining areas are perfect for nurturing family connections.



AURA

Experience the pinnacle of luxury at Aura,
where every aspect is crafted to reflect
elegance and refined living.





80' WIDE ROAD



TYPICAL FLOORE PLAN

Thoughtfully crafted rooms designed to offer you the perfect blend of comfort, convenience, and modern aesthetics.



- 2330 SFT 1
- 2310 SFT 2
- 2250 SFT 3
- 2250 SFT 4

AURA

PROJECT HIGHLIGHTS

HOME THEATER

6"X4" MATTE FINISH TILES IN ALL
ROOMS EXCEPT TOILETS

GYM

CHILDREN'S PLAY AREA

OPEN BADMINTON COURT

YOGA AND INDOOR GAME ROOMS

20'-0" HEIGHT ROOF IN STILT FLOOR





LOBBY

AURA

Experience the luxury of living in a stand-alone building with exclusive access to a modern gym, vibrant clubhouse, and family-friendly play arena.



HOME THEATER

AURA

GYM

Step into a world of comfort and convenience, where a premium gym, contemporary clubhouse, and fun-filled play arena are all part of your everyday living.





INDOOR PLAY AREA

AURA

Name any aspect of comfort combined with luxury and design, and you'll see it before you when living here at Aura.

SPECIFICATIONS



STRUCTURE

Super Structure: RCC “Shear Wall Structural System”, designed to withstand wind and sesimic loads as per relevant IS Codes.

WALLS: RCC Non Structural Walls / Block Masonry as per design.



CEILING FINISHES

Lobby Ceiling: False Ceiling with two coats of putty and two coats of emulsion paint of reputed make over a coat of primer, with Cove / Roof Lighting.

Internal Ceiling: Smoothly finished with putty and acrylic emulsion paint of reputed brands.

Bathrooms: Grid ceiling to cover all service lines.



WALL FINISHES AND PAINTING

Internal Wall Finish: Smoothly finished with putty and acrylic emulsion paint of reputed brands.

External: Texture finish & two coats of exterior emulsion paint of reputed brands with architectural features.



FLOORING

Drawing/Dining and Living, Bedrooms, Kitchen: 6ft x 4ft Premium quality large format matt finish tiles

Bathrooms: 600mm x 600mm Matt Vitrified tiles for the floor

Staircase: Natural Stone / Granite

Corridors: Natural Stone / Granite

Balconies: Non-Slip Vitrified Tiles in wooden finish

Utilities: 600mm x 600mm Matt Vitrified tiles of reputed make



TILE CLADDING/DADOOING

Bathrooms: 1200mm x 600mm Matt Vitrified tiles of reputed make

Utilities: 600mm x 600mm Matt Vitrified tiles of reputed make



DOORS & WINDOWS

Main Door: Factory made Teak wood frame, Batten Door with veneer, aesthetically designed with melamine/ PU polish fitted with good quality hardware and locking system of reputed make.

Internal Doors: Factory made Engineered solid wood door frame and good quality flush shutter with veneer or laminate on both sides fixed with good quality hardware and lock.

Balcony Doors: UPVC sliding door with 5mm thick float glass, Mosquito Mesh.

Windows: UPVC sliding window with 5mm thick float glass, Mosquito Mesh.

Grills: M.S safety grills for windows aesthetically designed.



BATHROOMS

- All C.P fitting of Kohler.
- Wall mounted commode with concealed flush tank.
- Hot and cold-water diverter in shower area
- Provision for geyser and exhaust fan.



KITCHEN

Stainless steel sink with both Drinking and Bore water connection and provision for water purifier.



UTILITY/WASH AREA

Plumbing provision for washing machine.



ELECTRICAL

- AC Conduiting & Copper Wiring for Drawing and all bedrooms.
- Concealed copper wiring with POLYCAB or equivalent make.
- Modular switches/sockets will be of LEGRAND or equivalent make.
- Power Provision for Air conditioners in drawing and all bedrooms.
- Power outlets for Geysers in all bathrooms.
- Miniature Circuit Breakers (MCB) for each distribution board.
- Power outlets for chimney, refrigerator, microwave, mixer/ grinder in kitchen.
- 3-Phase power supply for each flat.



TELECOM

Telephone points in drawing/living area.



INTERNET

Provision for Internet connection in drawing/living area and master bedroom.



CABLE TV

Provision for Internet connection in drawing/living area and all bedrooms.area and master bedroom.



GENERATOR

Back-up upto 1 Kv limit for each flat with Auto turn on mode apart from AC's and Geysers



LIFT

Automatic Passenger Lift of KONE / JOHNSON or Equivalent make.



PARKING

Covered Parking Space.



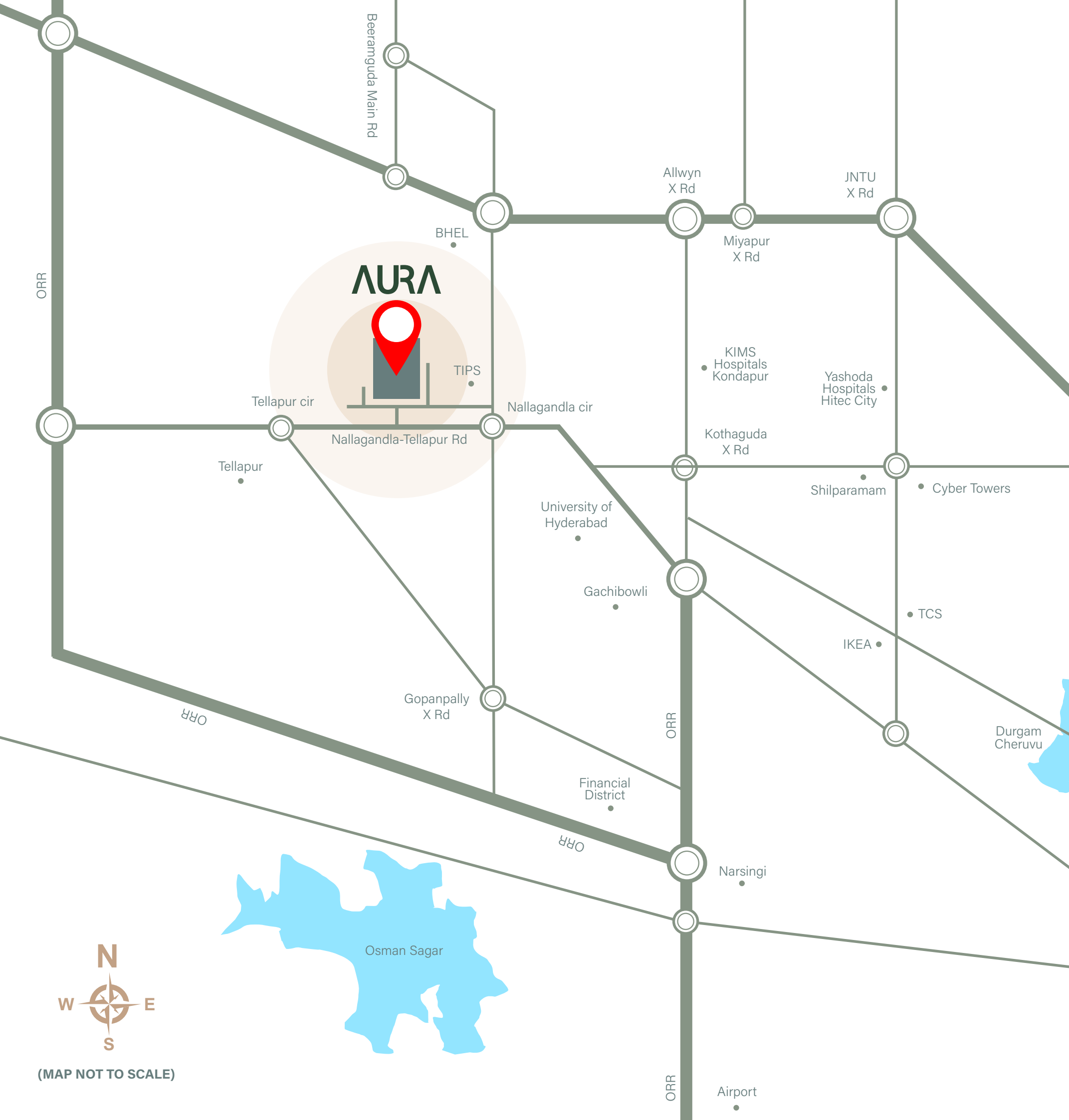
ADDITIONAL SPECIFICATIONS

Water Sub-Meter: Sub-Meter for all individual Flats & Common area to track Water usage consumption for entire Flat and Building.

CC.TV Surveillance: Closed Circuit Television Coverage in Building Premises



AURA



LOCATION HIGHLIGHTS

200 m
to Sadhana Infinity
International School

1.6 km
to Epistemo Vikas Leadership
School

2.2 km
to Citizens Specialty Hospital

2.5 km
to Aparna Neo Mall

4.8 km
to University of Hyderabad

20 min
drive to US consulate

25 min
drive to Financial District

AURA

CAPITOL CONSTRUCTIONS

#####