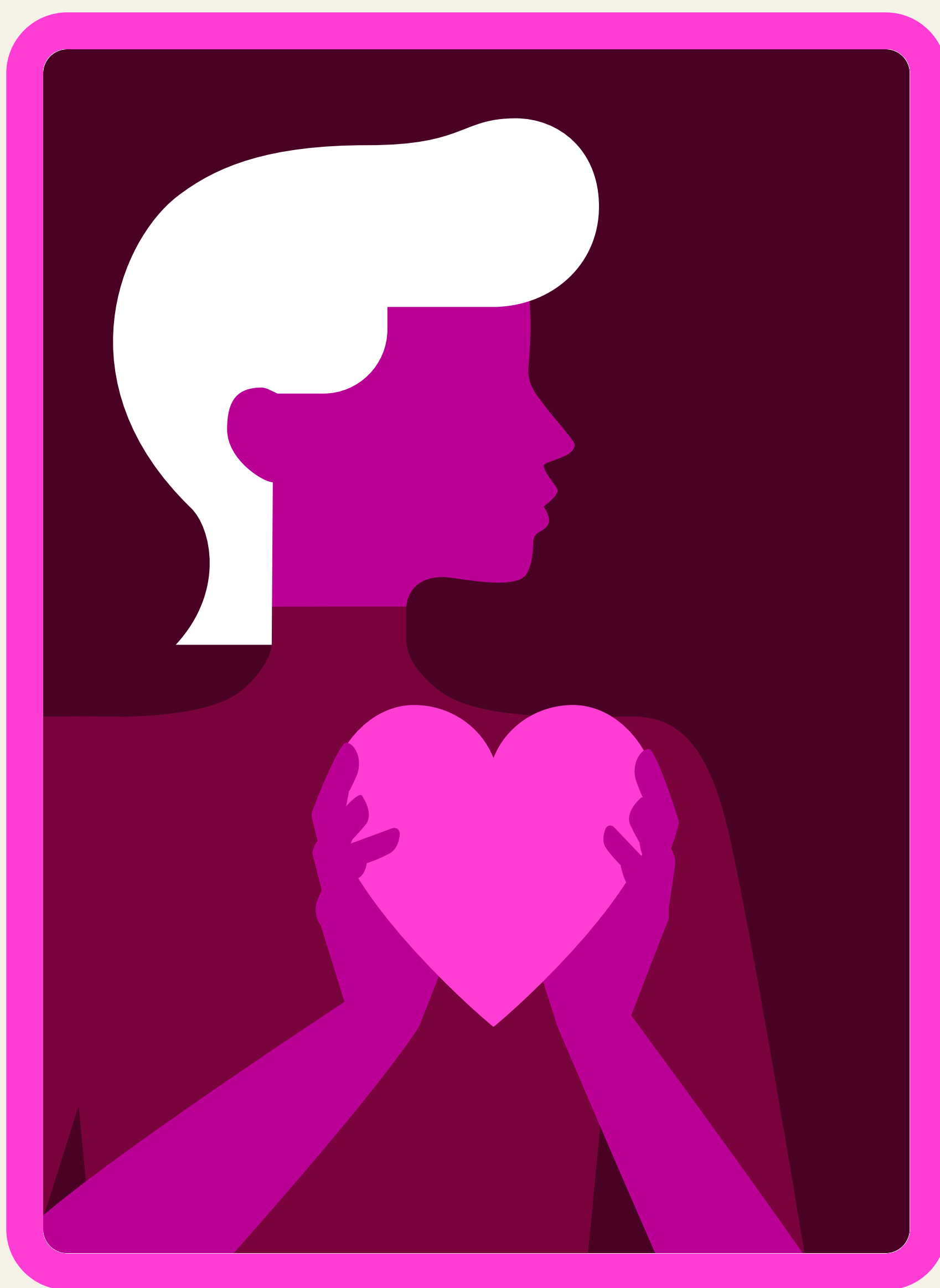




THE CONNECTOR

INTUITIVE • EMPATHETIC • AUTHENTIC



“People tell you everything —
you just have to listen.”

Poker Power



About the Connector

You walk into any room and immediately understand the dynamics, the unspoken tensions, and the untapped opportunities for collaboration. While others focus on individual hands, you're building the relationships that create lasting success.

Your superpower? You turn every interaction into a strategic advantage through genuine connection and emotional intelligence.

At the poker table and in your career, you know that the most powerful plays aren't about outsmarting people — they're about understanding them so well that you create outcomes where everyone wants to support your success.



Your Strengths

- ◆ You pick up on tone shifts and body language that others completely miss.
- ◆ You make people feel genuinely seen and heard. This isn't just a nice trait — it's strategic gold.
- ◆ You don't just close deals; you craft solutions that make everyone feel like they've won.
- ◆ You see what people really want, even when they don't say it directly.



Growth Opportunities

- ◆ Having difficult conversations when necessary
- ◆ Holding firm on your value and boundaries
- ◆ Balancing others' needs with your own goals



Career Sweet Spots

Client Success & Account Management

Your ability to build deep relationships and understand client needs makes you indispensable.

Executive Leadership & People Development

Teams thrive under your leadership because you understand what motivates each person. You're not just managing — you're unleashing potential.

Business Development & Partnerships

You don't just network; you build ecosystems of mutual success. Your relationship portfolio becomes your competitive moat.

Executive Coaching & Organizational Development

Your insight into human motivation and team dynamics makes you a natural at helping individuals and organizations transform.