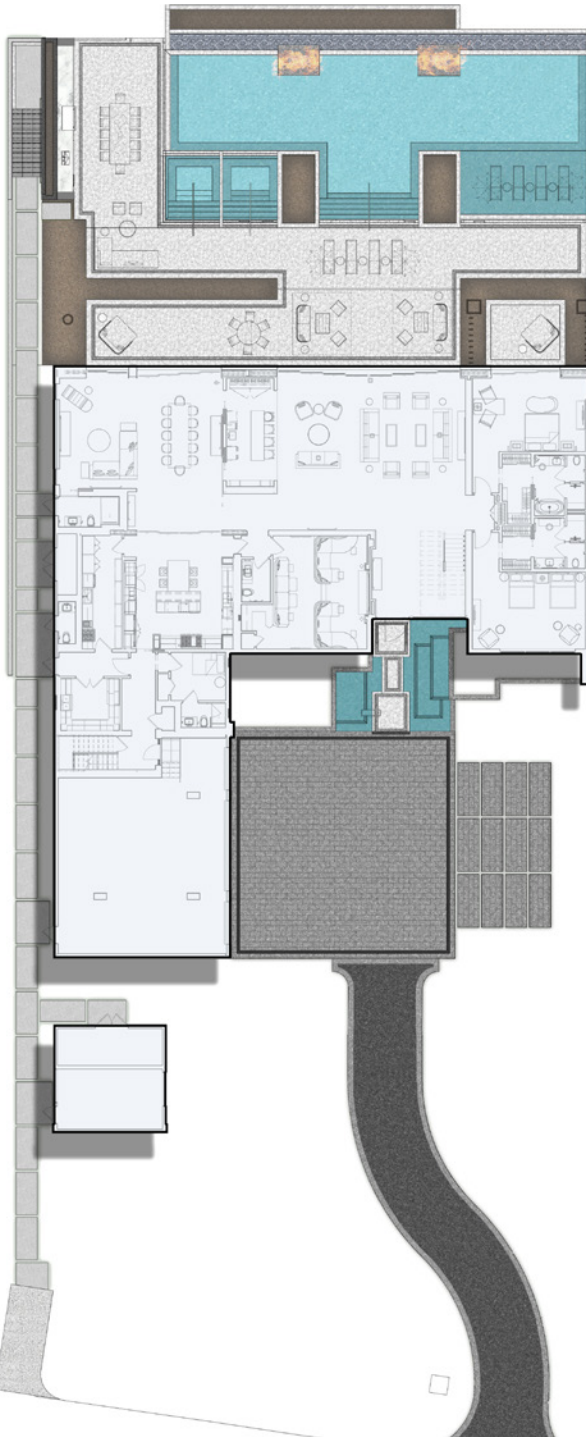




FOUR SEASONS
PRIVATE RESIDENCES
PUERTO RICO

A PAULSON PUERTO RICO DEVELOPMENT

BEACH/OCEAN VIEW



ATLANTIC DRIVE - 1ST FLOOR

5 Bedrooms | 7 Full Bathrooms | 2 Powder Rooms

Interior: 12,439 SF | Exterior: 8,866 SF

Total Area: 21,305 SF

Key features

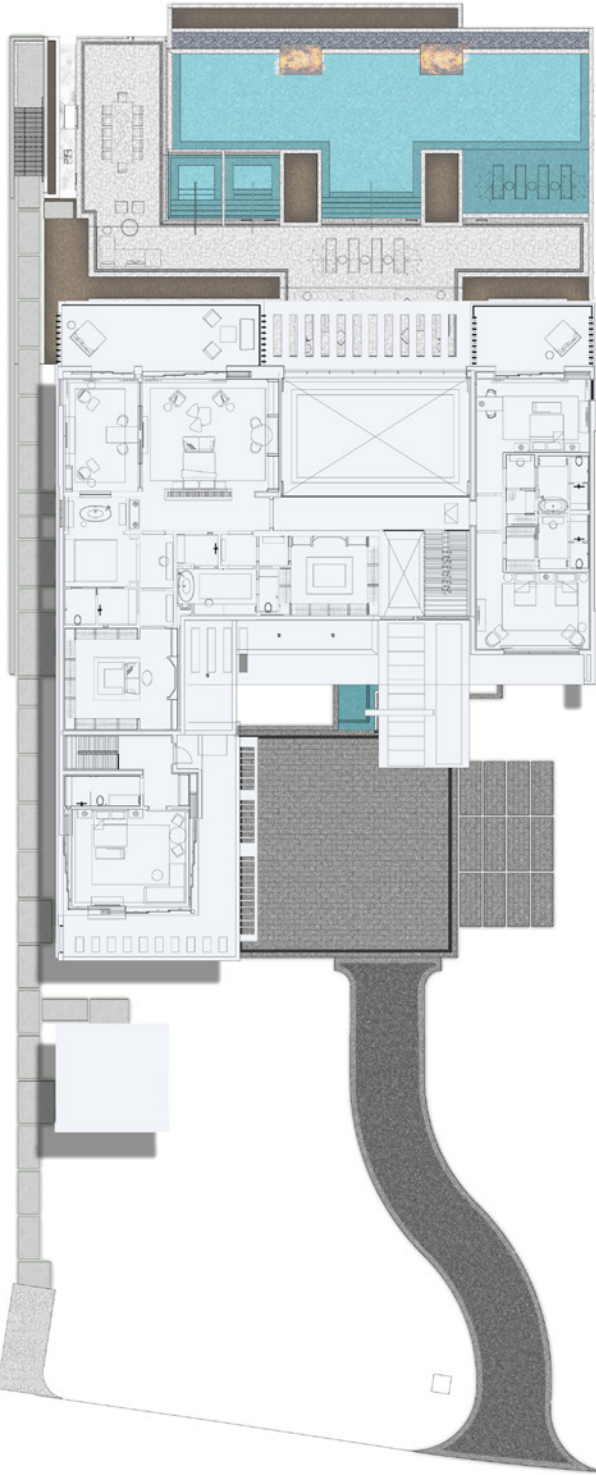
- 5 en suite bedrooms, including a grand primary suite with home office, dual bathrooms, and walk-in closets
- 7 full bathrooms plus 2 powder rooms
- Grand room with double-height ceilings
- Family room, dining area, media room, and flexible-use space
- Beach-facing oversized infinity pool with hot and cold plunge pools
- Interior and exterior kitchens and full bars



FOUR SEASONS
PRIVATE RESIDENCES
PUERTO RICO

A PAULSON PUERTO RICO DEVELOPMENT

BEACH/OCEAN VIEW



ATLANTIC DRIVE - 2ND FLOOR

5 Bedrooms | 7 Full Bathrooms | 2 Powder Rooms

Interior: 12,439 SF | Exterior: 8,866 SF

Total Area: 21,305 SF

Key features

- 5 en suite bedrooms, including a grand primary suite with home office, dual bathrooms, and walk-in closets
- 7 full bathrooms plus 2 powder rooms
- Grand room with double-height ceilings
- Family room, dining area, media room, and flexible-use space
- Beach-facing oversized infinity pool with hot and cold plunge pools
- Interior and exterior kitchens and full bars