



# NCPX US MOBILE UNIT INFORMATION

Updated 5/4/2026

NEPGROUP.COM



1080p Capable | Travels with A & B Unit

# NCP10: TECHNICAL SPECIFICATIONS

## POWER REQUIREMENTS

- A-UNIT: 2 208 VOLT, 3 PHASE, 200 AMPS OR 1 208 VOLT, 3 PHASE, 400 AMPS
- B-UNIT 1 208 VOLT, 3 PHASE, 200 AMPS

## PRODUCTION SWITCHER

- KAYENNE K FRAME - 5 M/E

## CAMERAS

- 2 SONY HDC4300 CAMERAS
- 12 SONY HDC2500 CAMERAS
- 8 SLEDS
- 8 HEAVY PANHEAD W/STICKS
- 6 LIGHTWEIGHT STICKS
- 2 SETS HARD CAMERA WHEELS

## LENSES

- 8 HARD LENSES
- 4 HANDHELD LENSES
- 4 WIDE ANGLE LENSES

## RECORD/REPLAY

- 2 EVS VIA 12 CHANNEL
- 6 EVS XT3 6 CHANNEL LSM
- 1 EVS XS3 6 CHANNEL SPOT BOX
- 1 EVS XFILE 3
- 1 EVS IP DIRECTOR
- 1 EVX XT ACCESS

## AUDIO

- MAIN MIX: CALREC ALPHA WITH 96 DUAL FADERS
- SUB MIX: CALREC ZETA

## COMMS

- RTS ADAM INTERCOM SYSTEM – 128 PORTS

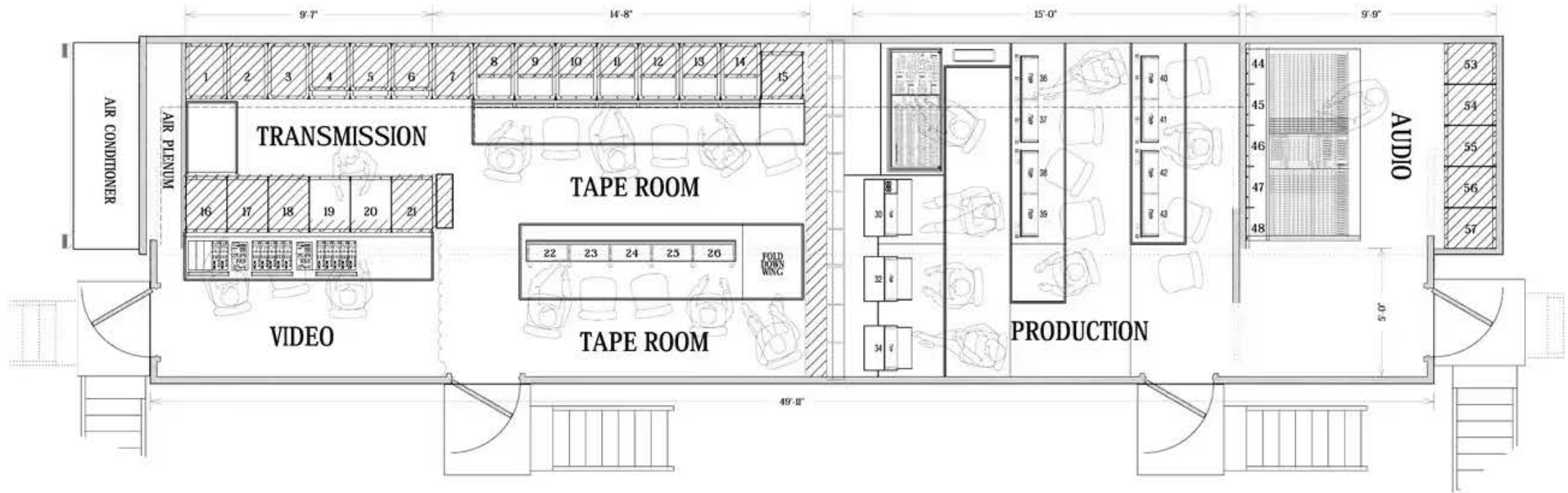
## SUPPORT EQUIPMENT

- UTAH SCIENTIFIC ROUTER
- HD VIDEO - 1052 INPUTS X 1052 OUTPUTS
- 107 INPUTS X 107 OUTPUTS EMBED/DE-EMBED
- AES 64 INPUTS X 64 OUTPUTS
- ANALOG AUDIO 67 INPUTS X 103 OUTPUTS
- BASIC TRUCK COMPLIMENT OF CABLE, MICS, ETC.



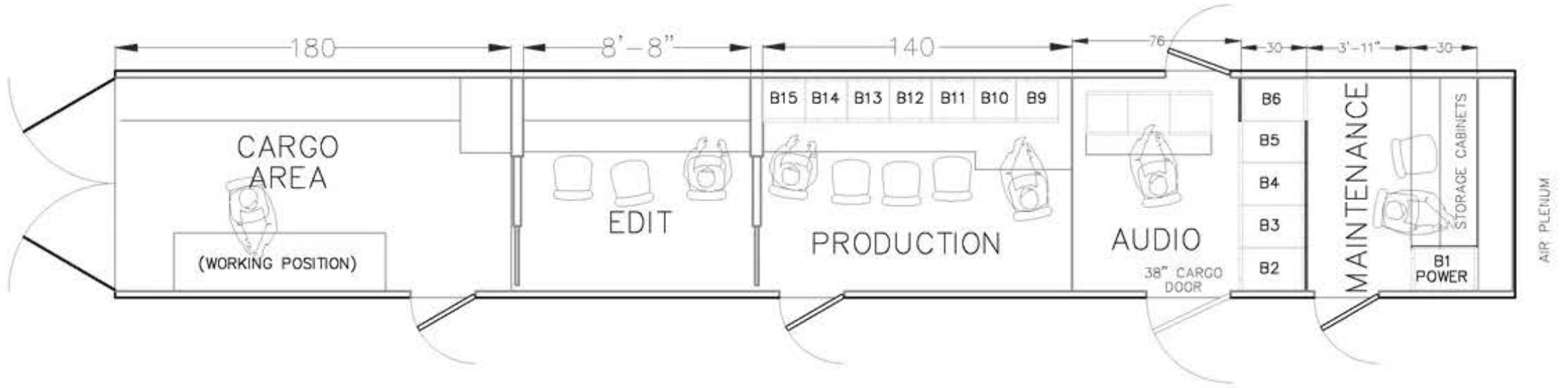
# NCPX A-UNIT

# FLOORPLAN

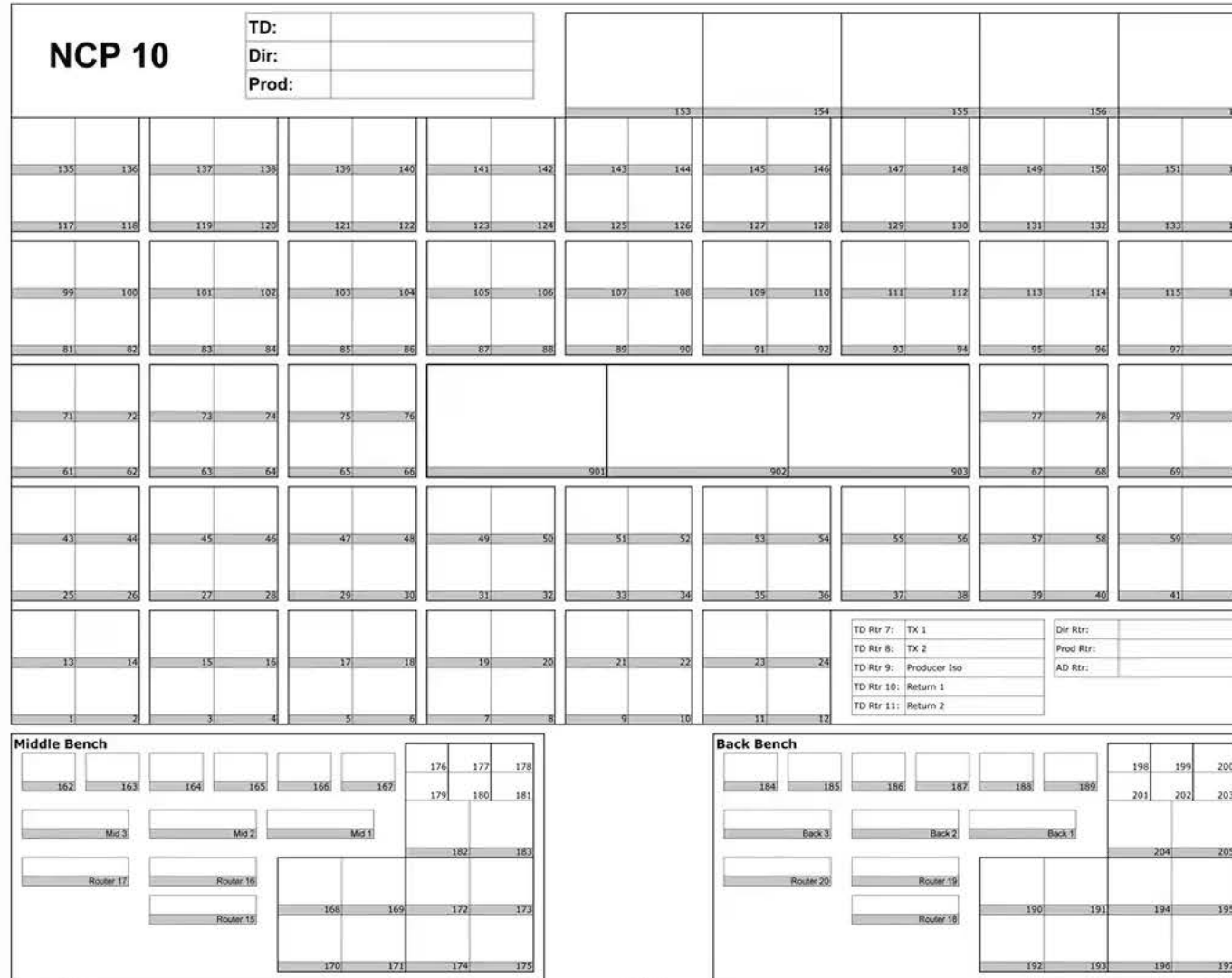


# NCPX B-UNIT

# FLOORPLAN



# PRODUCTION MONITOR WALL



# NCPX A-UNIT

# TAPE MONITOR WALL

PITCHING	More Patching	DVD 1	VHS 1	Xfile	Allen Pym	VTR 39	VTR 40	
		DVD 2	VHS 2					
			VHS/DVD Monitors					
		A500	DVC		A500	DVC		
VTR 31		VTR 32		VTR 33		VTR 34		
Wohler 7	Wohler 8	Wohler 9	Wohler 10	Wohler 11	Wohler 12	Wohler 13	Wohler 14	Wohler 15
398 399 400	406 407 408	414 415 416	422 423 424	430 431 432	438 439 440	446 447 448	454 455 456	462 463 464
401 402 403	409 410 411	417 418 419	425 426 427	433 434 435	441 442 443	449 450 451	457 458 459	465 466 467
	VGA	VGA	VGA	VGA	VGA	VGA	VGA	VGA
404 405	412 413	420 421	428 429	436 437	444 445	452 453	460 461	468 469
470 471	474 475	478 479	482 483	486 487	490 491	494 495	498 499	502 503
472 473	476 477	480 481	484 485	488 489	492 493	496 497	500 501	504 505
Adam 49		Adam 32		Adam 34		Adam 36		Adam 38
Rtr 49	Rtr 31	Rtr 32	Rtr 33	Rtr 34	Rtr 35	Rtr 36	Rtr 37	Rtr 38

**Back Beach**

SP 27	518	519	520	521	SP 27
	522	523	524	525	
	526	527	528	529	

Left Plasma

Adam 41	Adam 43
Rtr 41	Rtr 43
Wohler 22	Wohler 23

SP 28	530	531	532	533	SP 28
	534	535	536	537	
	538	539	540	541	

Right Plasma

Adam 45	Adam 47
Rtr 45	Rtr 47
Wohler 25	Wohler 26

506	507	508	509	510	511	512	513	514	515	516	517
Rtr 53	Rtr 55	Rtr 57	Rtr 59								

Show	Truck #	Type
	31	DVC
	32	
	33	A500
	34	DVC
	35	
	36	A500
	37	
	38	
	39	
	40	

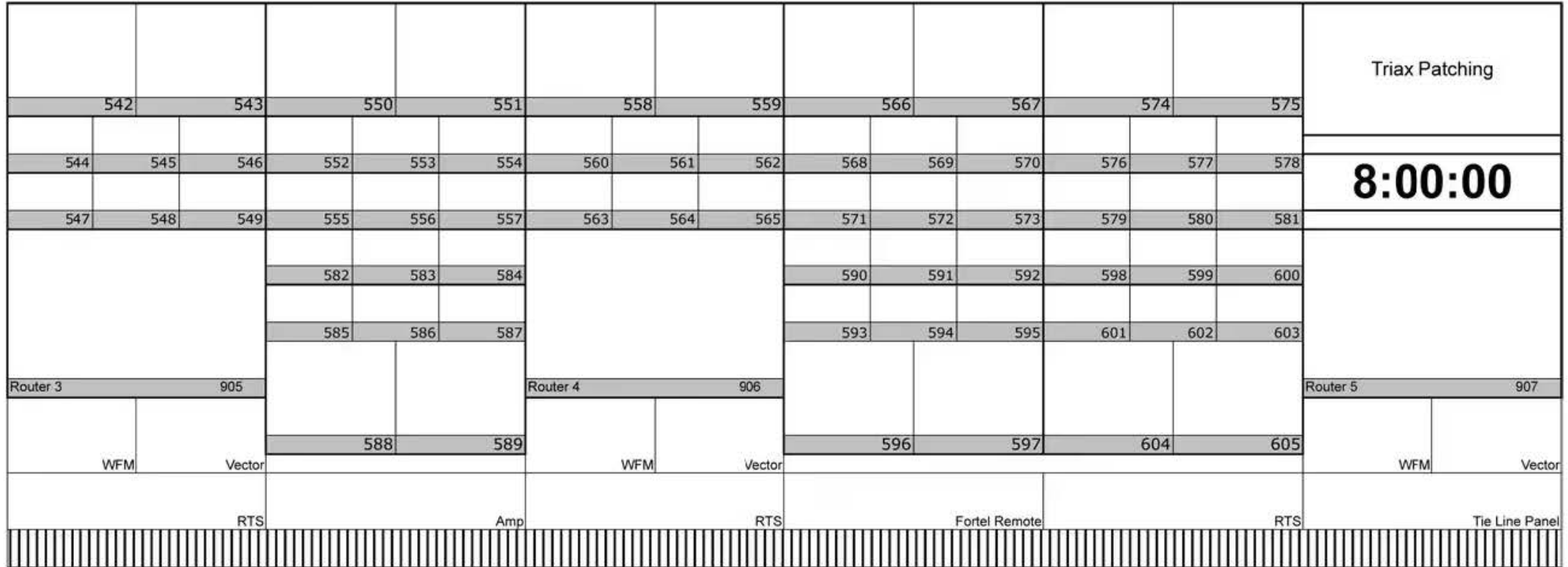
Show	Truck #	Type
	41	XT2
	42	XT2
	43	XT2
	44	XT2
	45	XT2
	46	XT2
	47	XT2
	48	XT2
	49	
	50	
	51	
	52	

Show	Truck #	Type
	53	RO
	54	RO
	55	RO
	56	RO
	57	RO
	58	RO
	59	RO
	60	RO
	61	
	62	
	63	XT2
	64	XT2

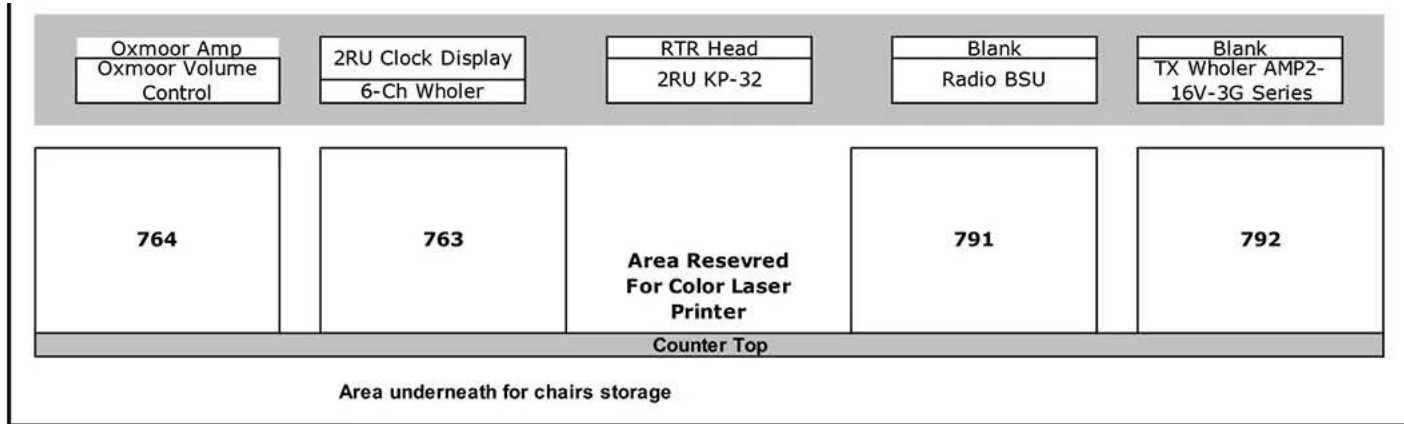


NCPX A-UNIT

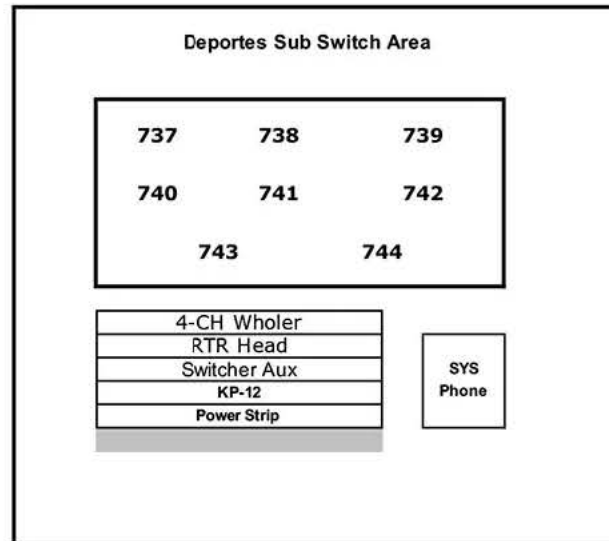
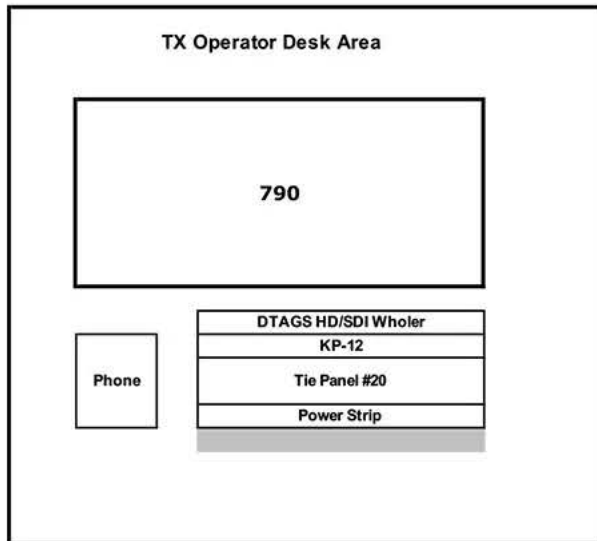
# VIDEO MONITOR WALL



# OFFICE & SUBMIX MONITOR WALL

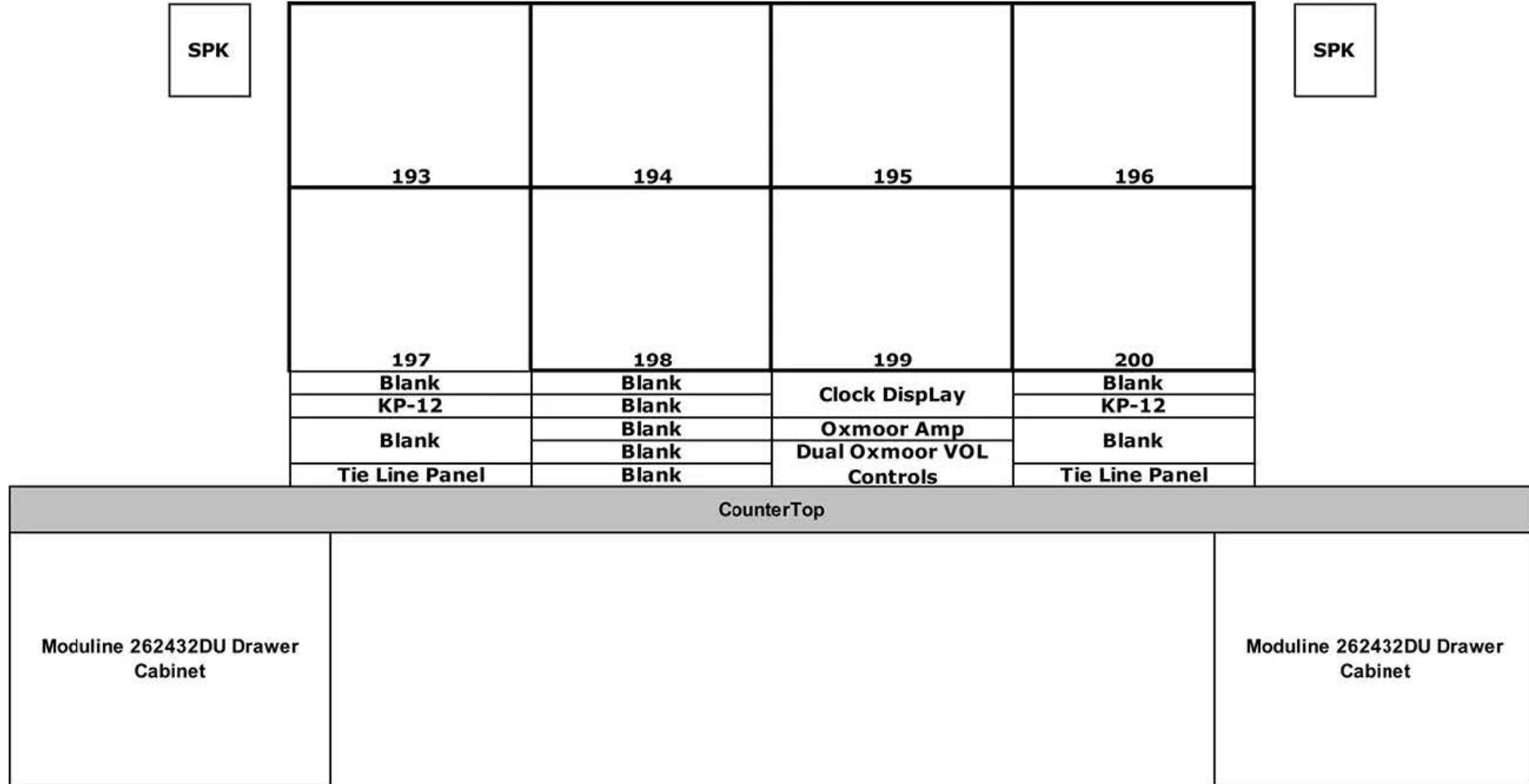


TX Wholer Feed By  
Router Outs 735 and 736



NCPX B-UNIT

# MAINTENANCE / ROBO MONITOR WALL



NCPX B-UNIT

# RACK ROOM MONITOR WALL

Shelf Above monitors to store extra gear on																
754	755	756	745	746	747	726	727	728	717	718	719	713	714	709	710	
757	758	759	748	749	750	729	730	731	720	721	722					
760	761	762	751	752	753	732	733	734	723	724	725	715	716	711	712	
LCD #6 VIP 74(18 DUO2-2)		LCD #5 VIP 73 (18 DUO2-1)			LCD #4 VIP 72 (18 DUO1-2)			LCD #3 VIP 72 (18 DUO1-1)			LCD #2 VIP 71 (8 DUO2-2)		LCD #1 VIP 71 (8 DUO2-1)			
789 Monitor #15		788 Monitor #14		787 Monitor #13		786 Monitor #12		785 Monitor #11		784 Monitor #10		783 Monitor #9		782 Monitor #8		781 Monitor #7
4-CH Wholer	4-CH Wholer	4-CH Wholer	4-CH Wholer	4-CH Wholer	4-CH Wholer	4-CH Wholer	4-CH Wholer	4-CH Wholer	4-CH Wholer	4-CH Wholer	4-CH Wholer	4-CH Wholer	4-CH Wholer	4-CH Wholer	4-CH Wholer	4-CH Wholer
RTR Head .115	RTR Head .114	RTR Head .113	RTR Head .112	RTR Head .111	RTR Head .110	RTR Head .109	RTR Head .108	RTR Head .107								
KP-12	EVS KVM Shelf	KP-12	Blank	Oxmoor Amp	KP-12	Blank	KP-12	Blank								
Tie Panel #15		Power Strip	Tie Panel #13	Power Strip	SPK Volume Control	Blank	Tie Panel #9	Blank								
Desk area in front of 5RU units, depth is TBD																

