



SUPERSHOOTER 20 US MOBILE UNIT INFORMATION

Updated 05/28/2026

NEPGROUP.COM



Single Trailer Unit

SUPERSHOOTER 20: TECHNICAL SPECIFICATIONS

POWER REQUIREMENTS

- 400 AMP, 208 VOLT, 3 PHASE OR 2 200AMP, 208 VOLT, 3 PHASE

PRODUCTION SWITCHER

- KAYENNE K FRAME - 9 M/E

CAMERAS

- 1 SONY HDC4300 CAMERA
- 12 SONY HDC2500 CAMERA
- 6 SLEDS
- 6 HEAVY PANHEADS W/STICKS
- 7 LIGHTWEIGHT STICKS

LENSES

- 6 HARD LENSES
- 8 HANDHELD LENSES
- 2 WIDE ANGLE LENSES

RECORD/REPLAY

- 4 EVX XT3 12 CHANNEL LSM
- 1 EVS XS3 6 CHANNEL SPOT BOX
- 1 EVS XFILE 3
- 2 PDW-F1500 XDCAM VTR
- 1 SXS CARD READER/RECORDER

AUDIO

- CALREC ARTEMIS BEAM WITH 64 DUAL FADERS

COMMS

- RTS ADAM INTERCOM SYSTEM

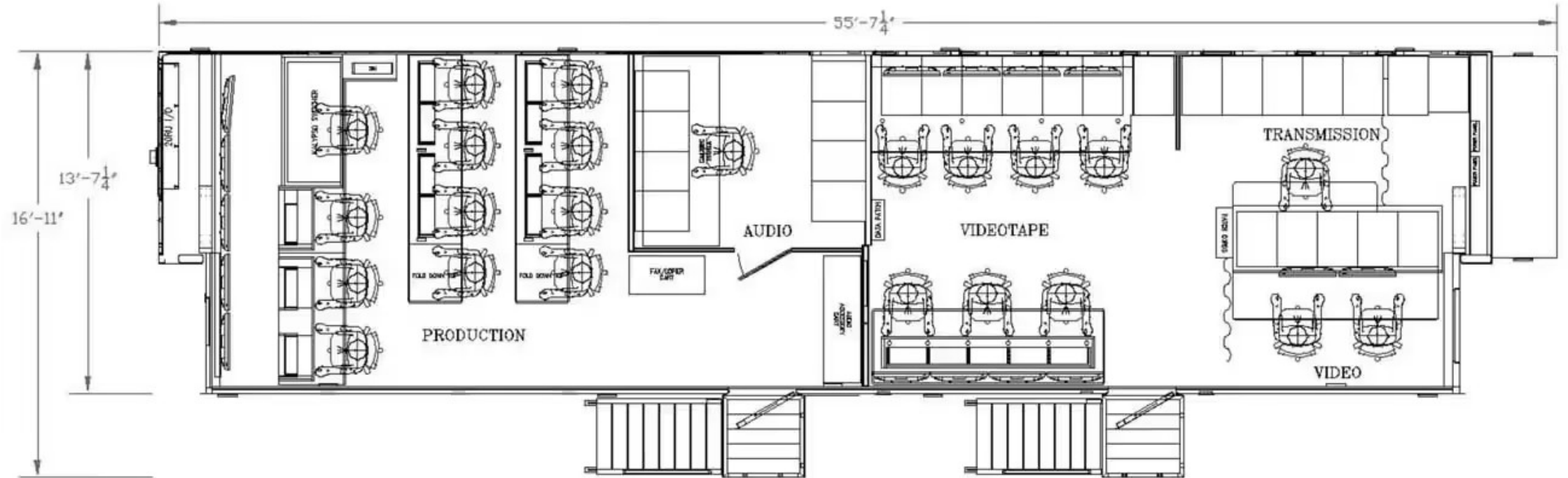
SUPPORT EQUIPMENT

- PESA ROUTER
- HD VIDEO - 144 INPUTS X 144 OUTPUTS
- MADI 6 INPUTS X 6 OUTPUTS
- AES 640 INPUTS X 768 OUTPUTS
- ANALOG 128 INPUTS X 128 OUTPUT
- 16 UTILITY FRAME SYNC/PROCESSORS
- 1 BOOTH KIT
- NO HYDRA BOXES
- BASIC TRUCK COMPLIMENT OF CABLE, MICS, ETC.



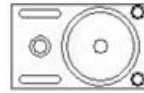
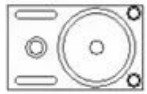
SUPERSHOOTER 20

FLOORPLAN

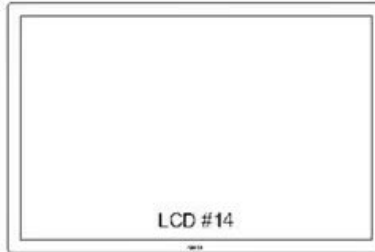
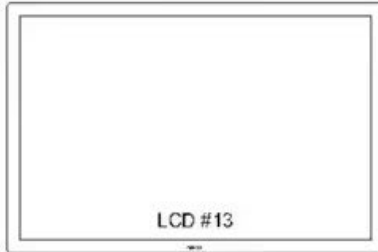
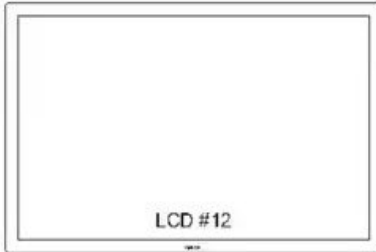
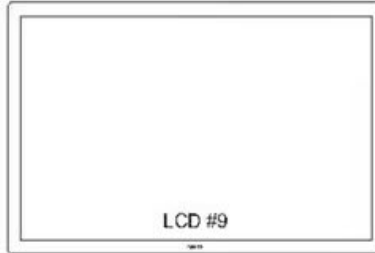
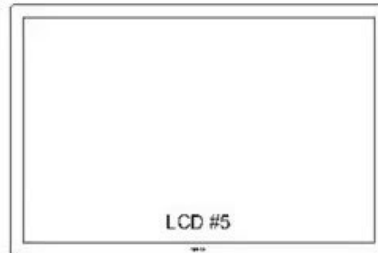
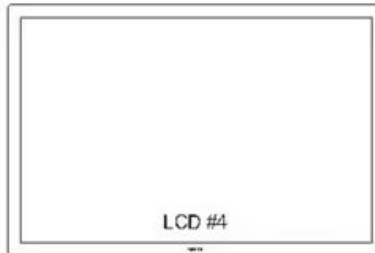
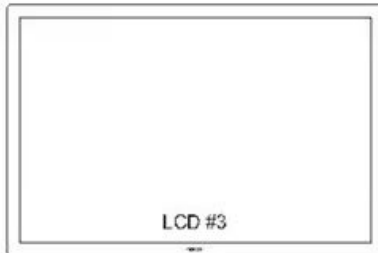
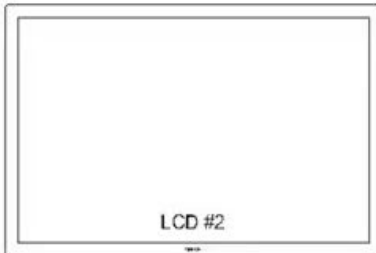
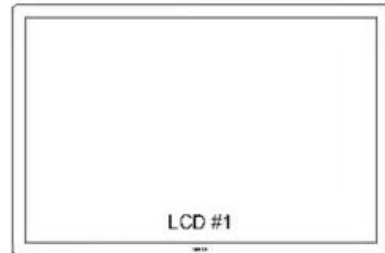
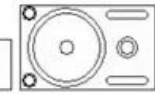


SUPERSHOOTER 20

PRODUCTION MONITOR WALL



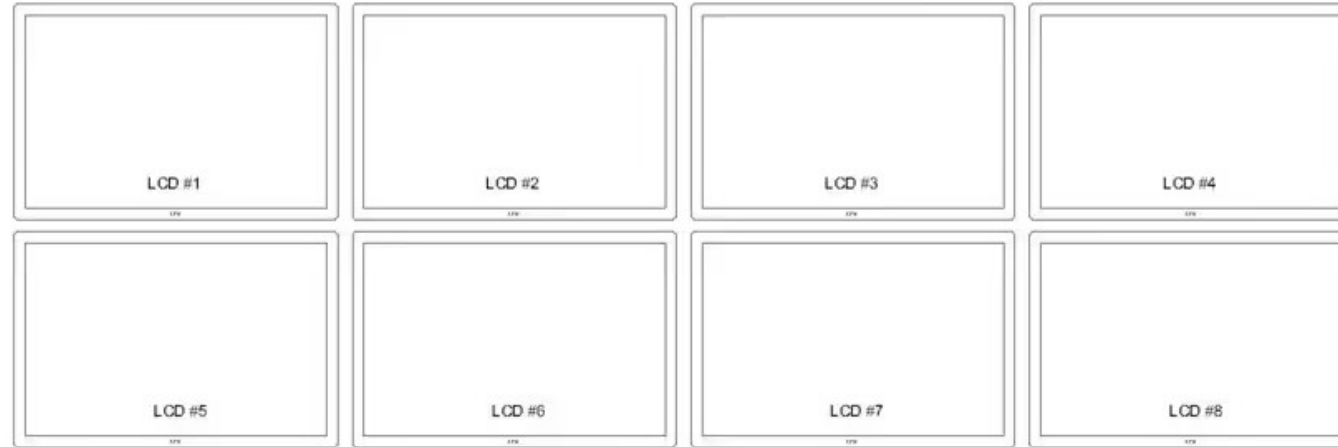
CLOCK



SUPERSHOOTER 20

TAPE MONITOR WALL

VIDEOTAPE MONITOR WALL



VT CONSOLE MONITOR WALL

