



TOUR US MOBILE UNIT INFORMATION

Updated 06/01/2026



IP-Based, TFC Driven, 1080p, HDR, and 4k Capable | 8 Trailer Unit

TOUR: TECHNICAL SPECIFICATIONS

PRODUCTION

- GVG KAYENNE XP SERIES ELITE SWITCHER
- IP 192 INPUTS / 96 OUTPUTS
- SDI 32 INPUTS / 16 OUTPUTS
- 16 IDPM / EDPM / 2D DPM

CAMERAS

- UP TO 53 SONY HDC-3500L CAMERAS – WIRED FOR 72
- 1 SONY HDC-5500L CAMERA
- 4 SONY HDC-P50 COMPACT POV CAMERAS
- 25 SONY HDLA LARGE LENS ADAPTER
- 25 HARD CAMERA PANHEAD & TRIPOD
- 38 HH CAMERA PANHEAD & TRIPOD
- 2 ENG CAMERA PACKAGES
- 2 SONY FR7 ROBO CAMERAS

LENSES

- 25 CANON 122X8.2 HARD LENS
- 36 CANON 25X7.6 HAND HELD LENS
- 4 CANON 20X5 HAND HELD LENS
- 9 CANON 15X4.3 WIDE ANGLE LENS

SUPPORT EQUIPMENT

- IP ROUTER WITH CISCO SWITCHES AND TFC CONTROL – WITH MADI
- 120 UDX IP CONVERTERS
- 4 AJA VIDEO FS-HDR UDX
- 12 3G/HD VIDEO OVER FIBER TRANSMITTERS
- MONITORS: 4-27" LCD, 4-23" LCD, 10-21" 3G/HD-SDI

AUDIO

- 3 CALREC APOLLO DIGITAL AUDIO CONSOLE WITH BLUEFIN
- 2 HIGH DENSITY SIGNAL PROCESSING
- 1122 CHANNELS WITH FULL SIGNAL PROCESSING
- 128 MIX BUSSES FOR GROUP AND MAIN OUTPUTS
- 96 MULTI-TRACK BUSSES
- 48 AUX BUSSES
- 72 FADER, A/B LAYERS
- 18 HYDRA II FIELD BOXES
- 4 FIBER BOOTH/FIELD KITS

MICROPHONES

- A FULL COMPLIMENT OF MICS, INCLUDING: ANNOUNCER HEADSETS, STICK, SHORT AND LONG SHOTGUN AND LAVALIER

COMMUNICATIONS

- ADAM INTERCOM SYSTEM - 880 PORTS
- 12 DANTE BELTPACKS
- 12 DANTE IFB BELTPACKS
- 300 WALKIE TALKIES WITH 50 BASE STATIONS
- 10 TIF - TELEPHONE INTERFACES
- 8 QKT

RECORD & PLAYBACK

- 8 EVS XT-VIA 12 CHANNEL
- 1 XS-VIA 6 CHANNEL SPOT BOX
- 2 EVS X-FILE[3]
- 4 EVS XT ACCESS
- 5 EVS IP DIRECTOR
- 4 EVS XHUBVIA
- 2 EVS DB SERVER
- 2 AJA VIDEO KIPRO GO RECORD SYSTEM

GRAPHICS

- 3 CHRYON PRIME
- 1 FINGERWORKS TELESTRATOR

CABLE

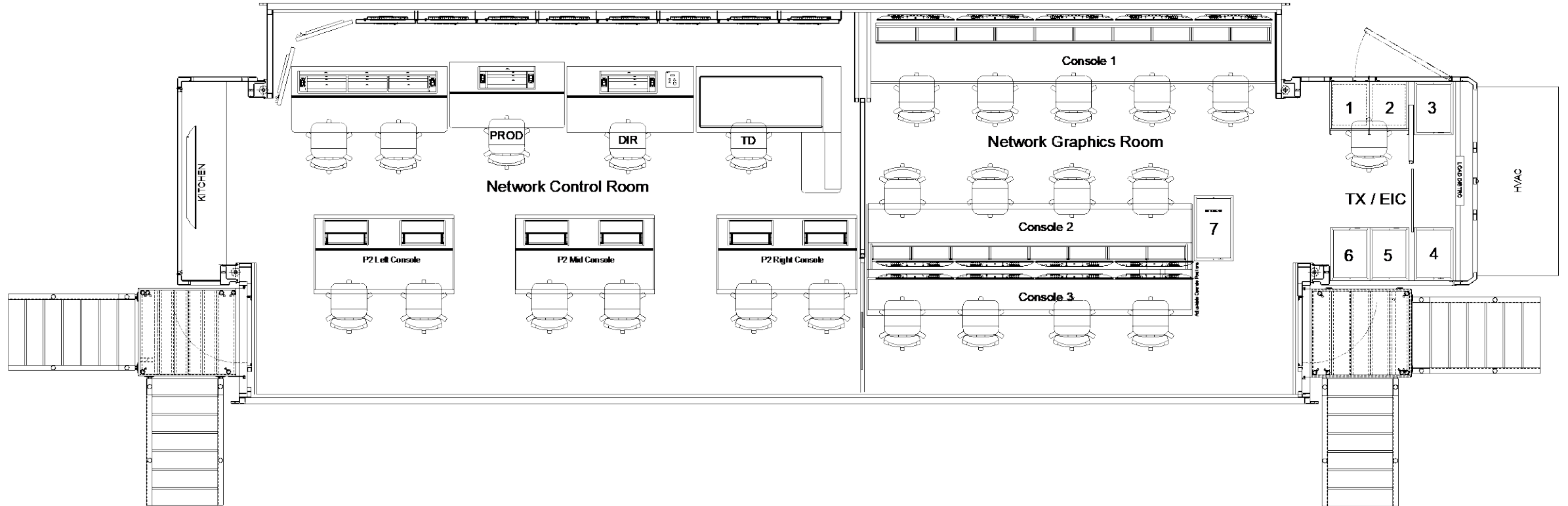
- FIBER AND COAX CABLE

DIMENSIONS AND POWER

- PCR - 53' DOUBLE EXPAND - 208 VOLT 3 PHASE, 200 AMP SERVICE REQUIRED
- FAU 1, FAU 2, BSI - 53' DOUBLE EXPAND - 208 VOLT 3 PHASE, 1 400 AMP OR 2 200 AMP SERVICE REQUIRED
- RECORD/FLEX -53' SINGLE EXPANDO - 208 VOLT 3 PHASE, 200 AMP SERVICE REQUIRED
- BSI HAUL -53' TRAILER - 208 VOLT 3 PHASE, 200 AMP SERVICE REQUIRED
- OFFICE 1 & 2 -53' DOUBLE EXPAND - 208 VOLT 3 PHASE, 100 AMP SERVICE REQUIRED
- EXTRA HAUL -53' TRAILER

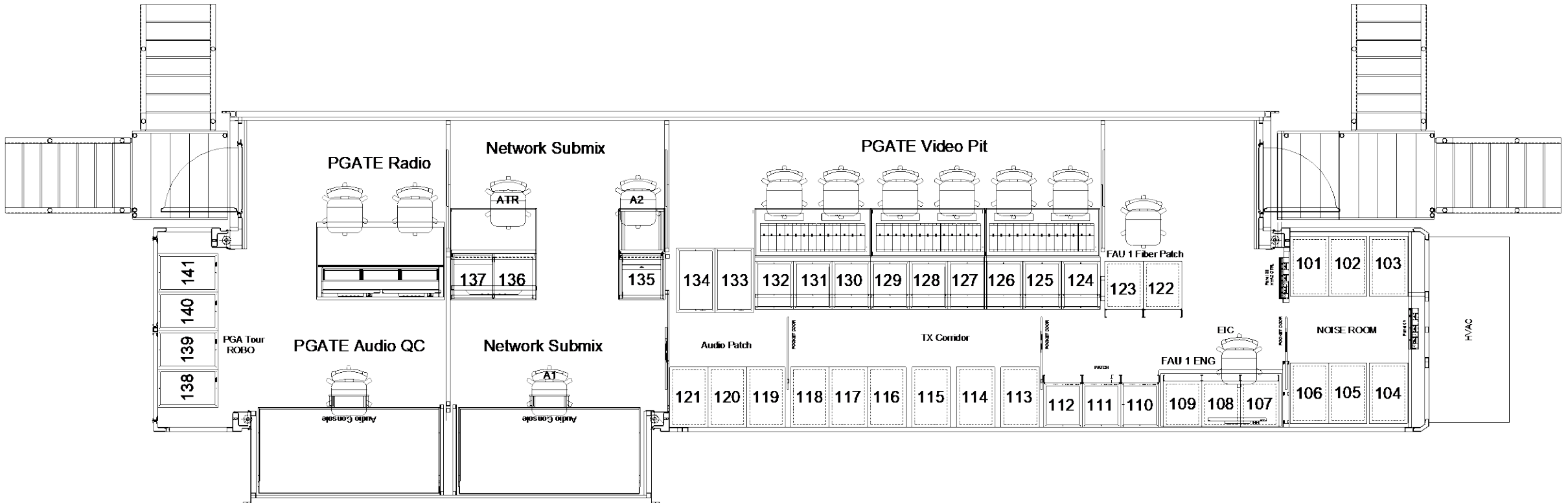


PCR FLOORPLAN



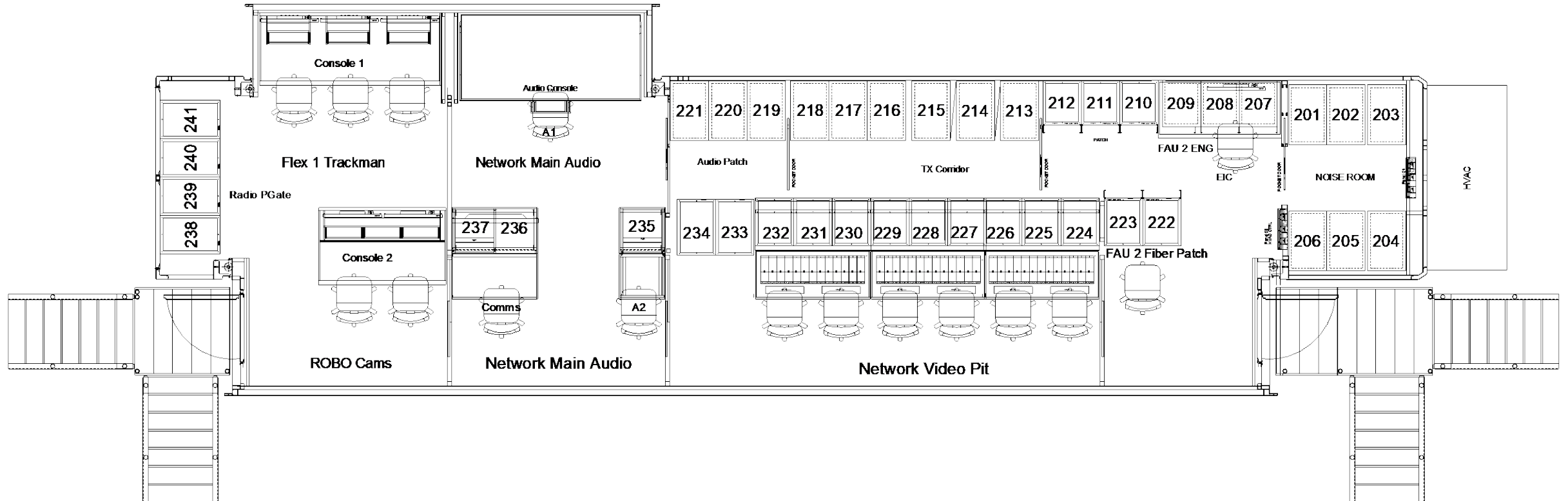
FAU-1

FLOORPLAN

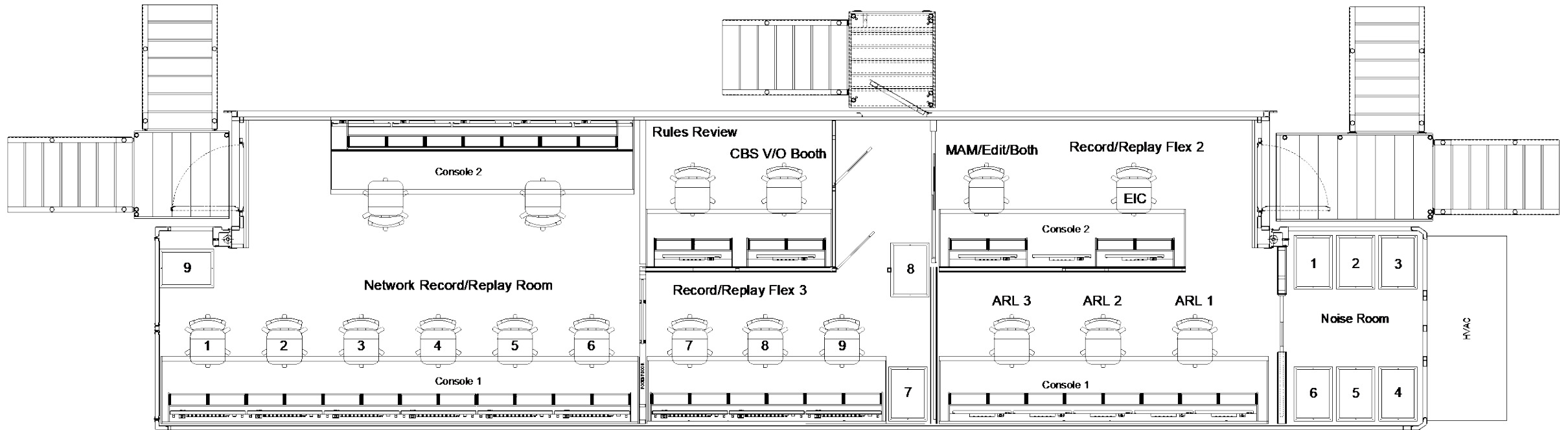


FAU-2

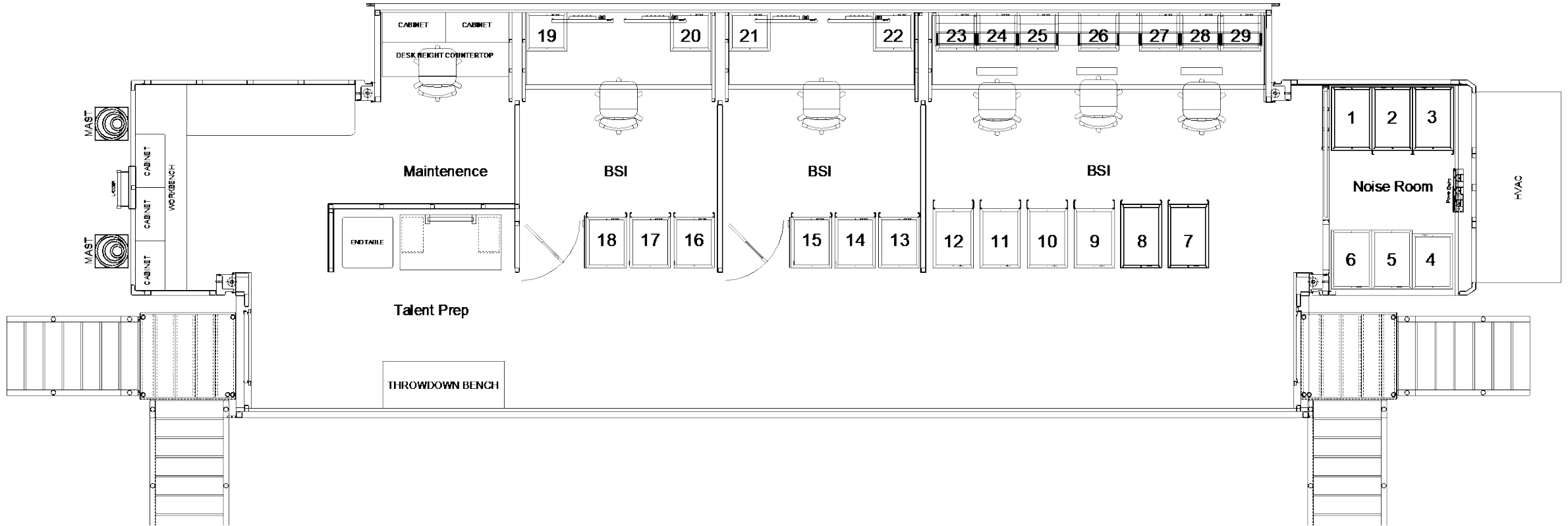
FLOORPLAN



RECORD/REPLAY FLOORPLAN

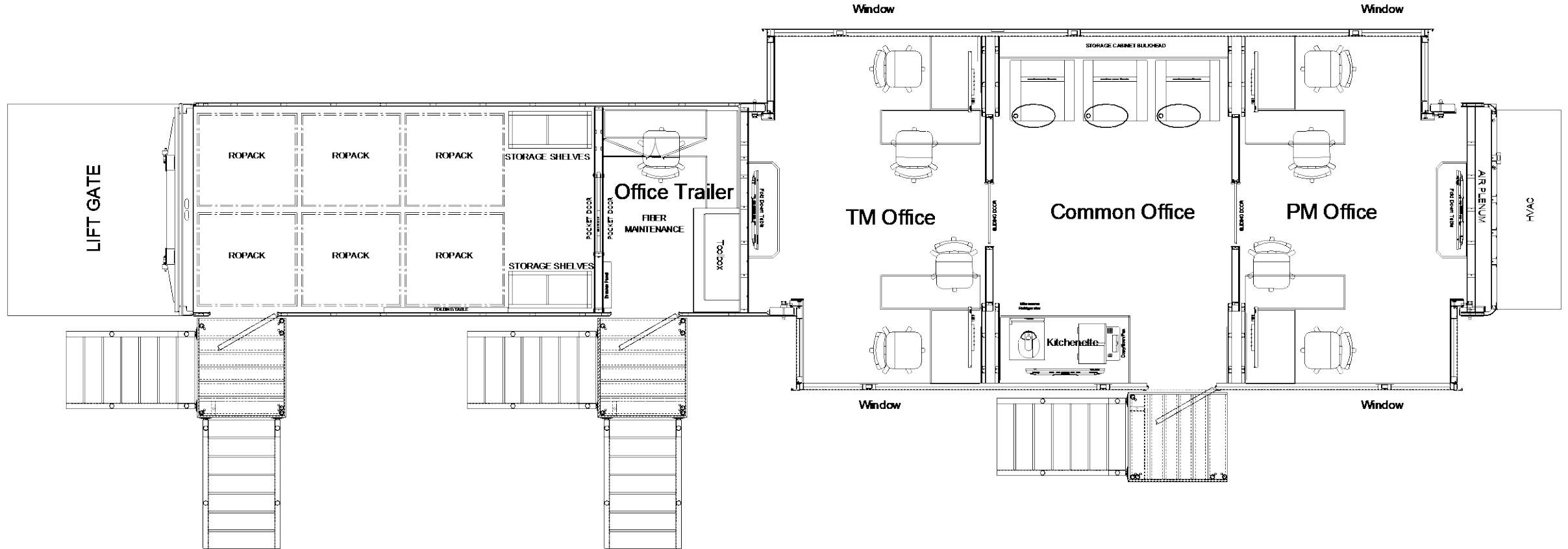


BSI FLOORPLAN

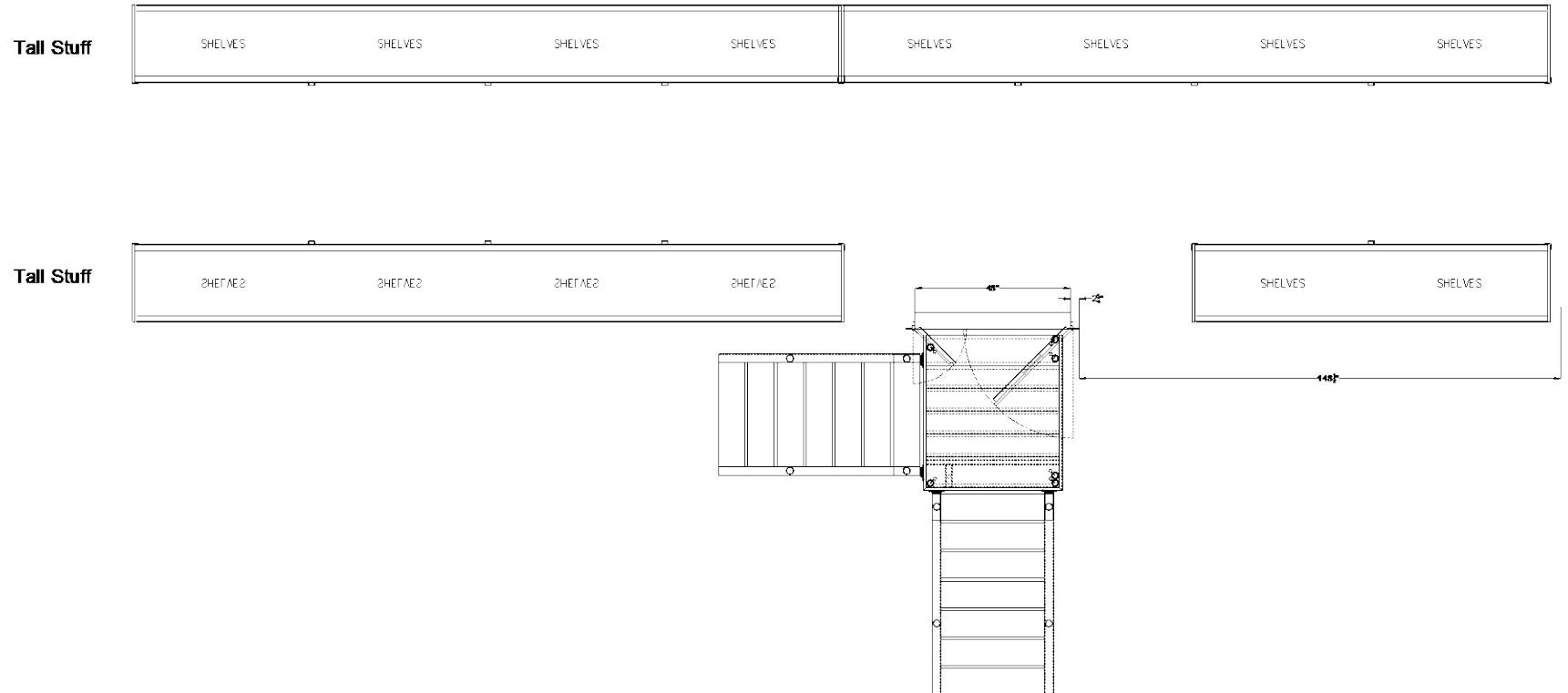


OFFICE 1 & 2

FLOORPLAN

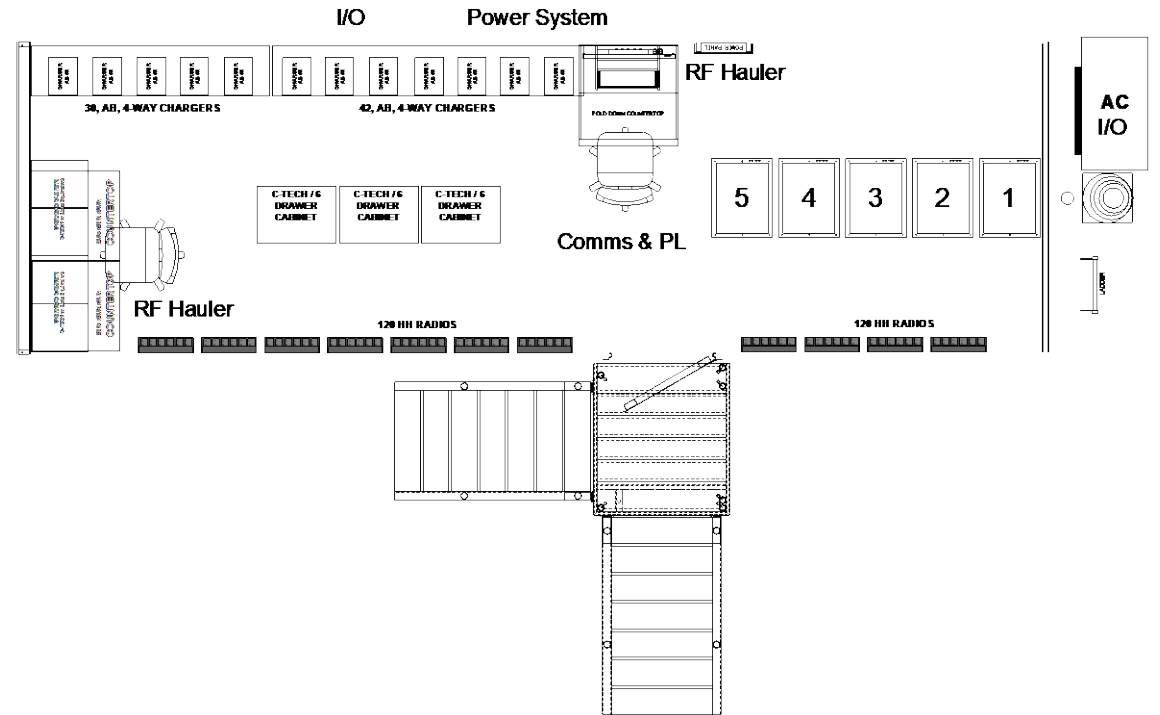
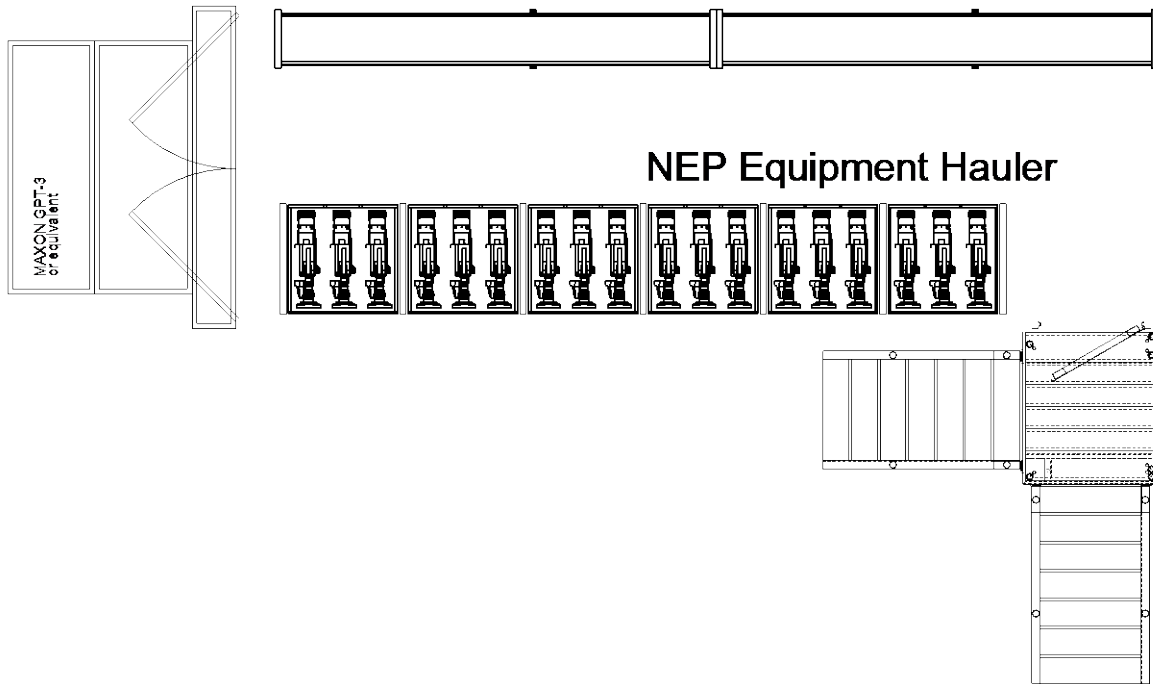


EXTRA HAUL FLOORPLAN



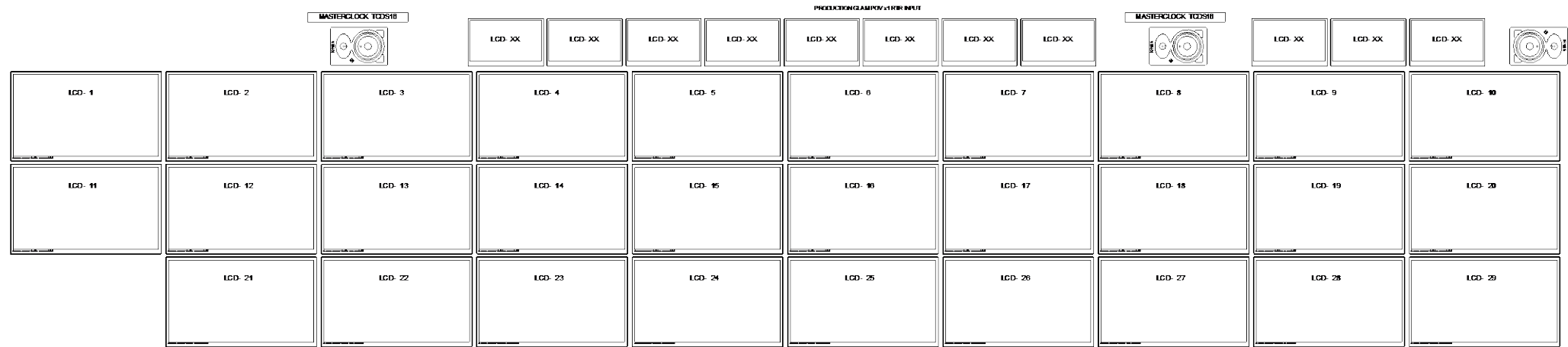
BSI HAUL

FLOORPLAN



TOUR

PRODUCTION MONITOR WALL



5

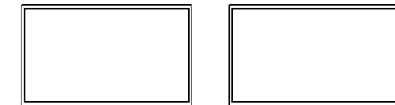
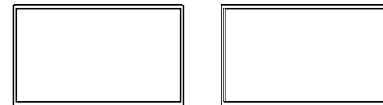
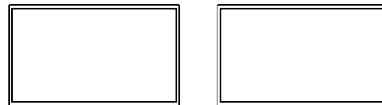
4

PROD

DIR

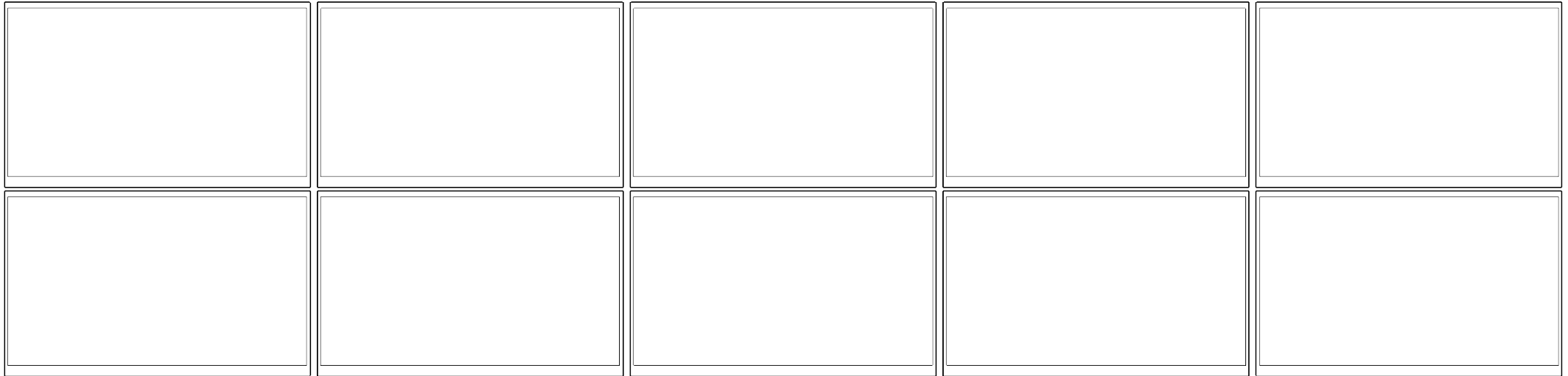
TD

Production P2 Monitors



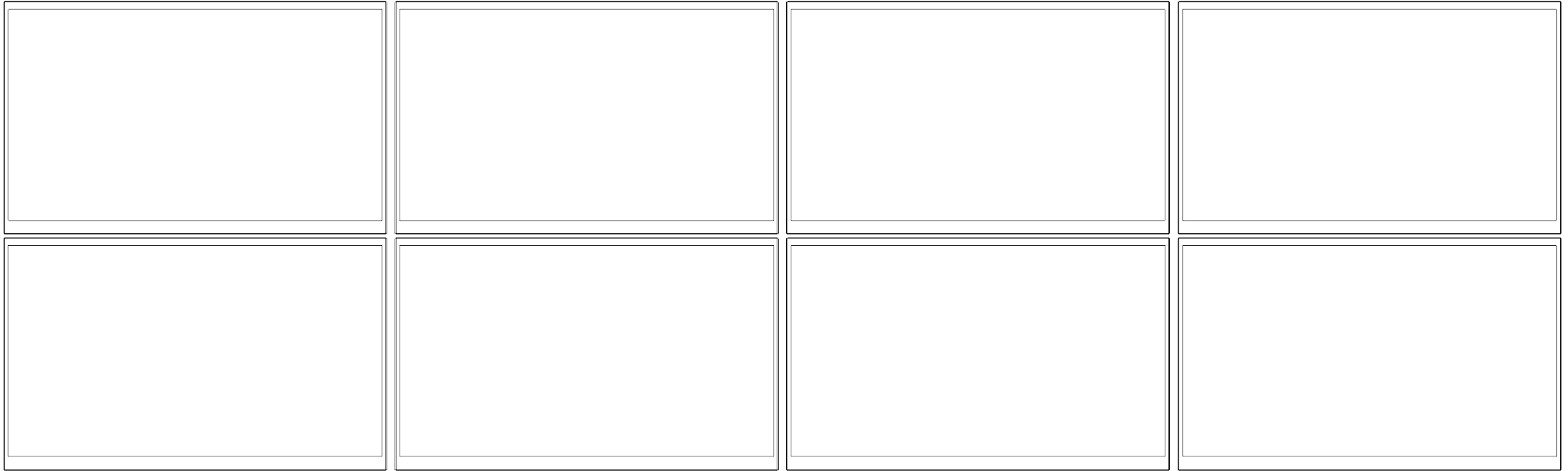
TOUR

GFX CONSOLE 1 MONITOR WALL



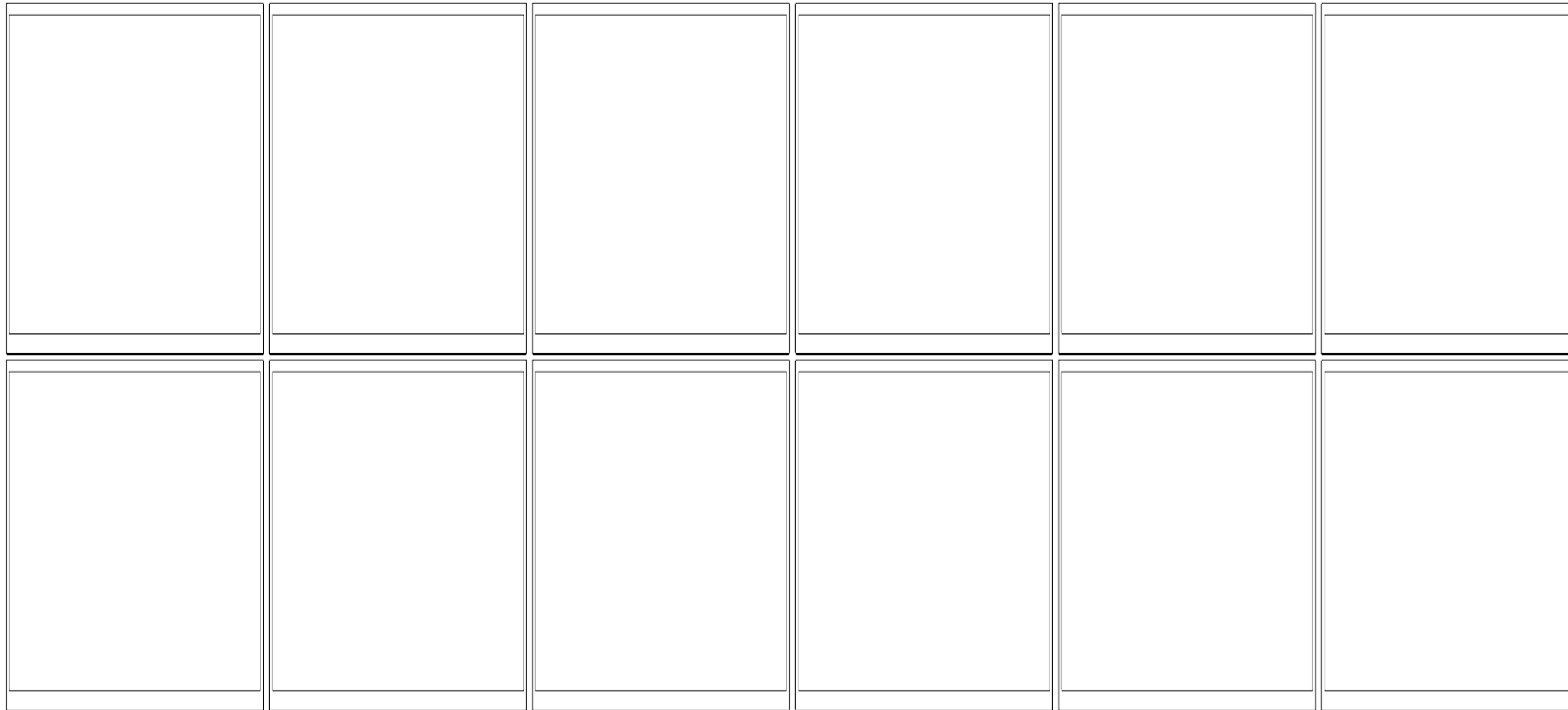
TOUR

GFX CONSOLES 2 & 3 MONITOR WALL



TOUR

REPLAY CONSOLE 1 MONITOR WALL



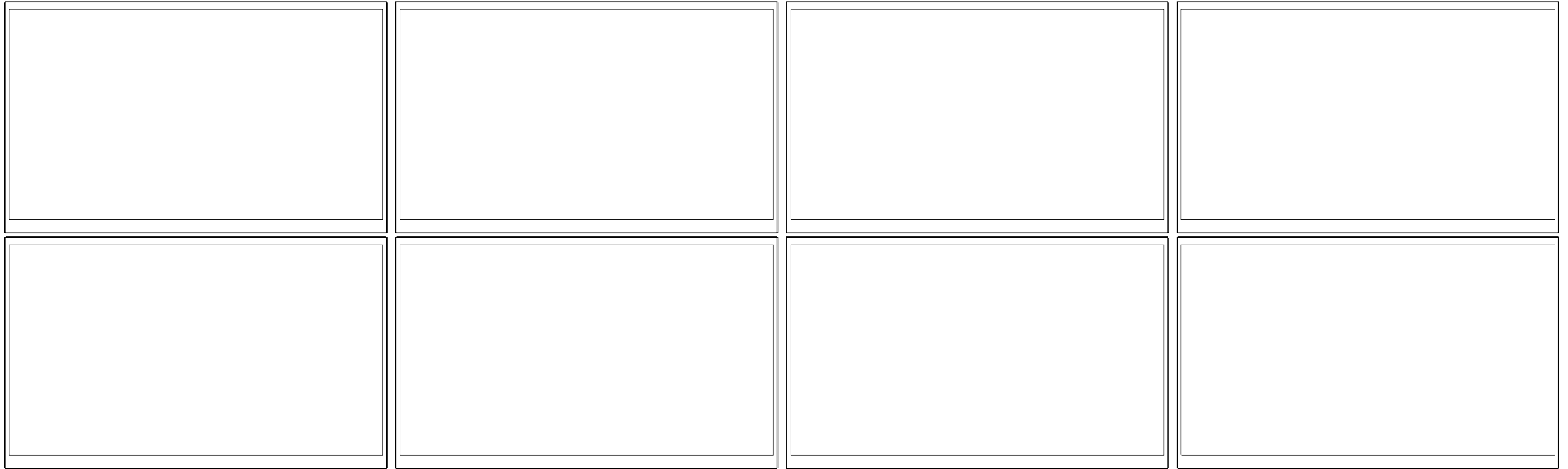
TOUR

REPLAY CONSOLE 2 MONITOR WALL



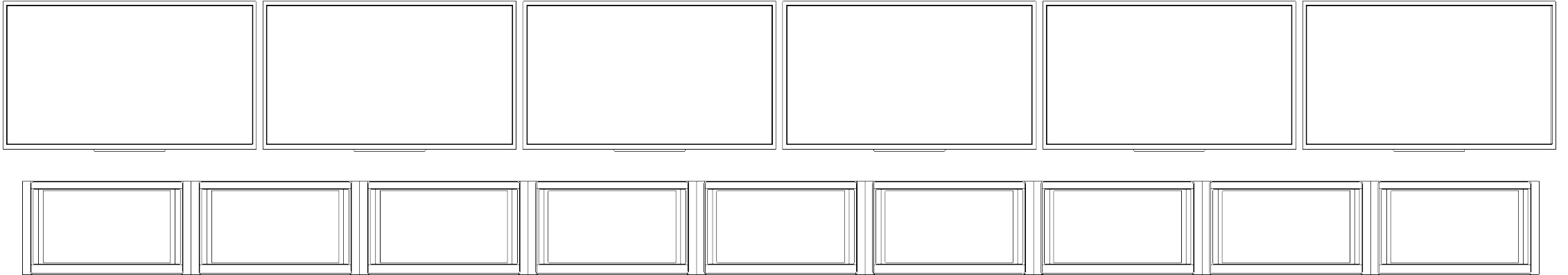
TOUR

FLEX AREA MONITOR WALL



TOUR

VIDEO 1 & 2 MONITOR WALL



TOUR

MAIN MIX & SUBMIX MONITOR WALL

