



# **ST25**

## **US MOBILE UNIT INFORMATION**

Updated 06/03/2026

## Single Trailer Support Unit

# ST25: TECHNICAL SPECIFICATIONS

### DIMENSIONS

- 75' LONG X 13'6" HIGH X 12.5' WIDE - WITH STEPS & TRACTOR
- 55' LONG X 13'6" HIGH X 12.5' WIDE - W/STEPS & WITHOUT TRACTOR
- NO EXPANDO

### COMMUNICATIONS

- 9 DUAL LISTEN BELTPACKS

### SUPPORT EQUIPMENT

- 1 UTILITY FRAME SYNCs/PROCESSORS
- 1 LIGHT KIT

### AUDIO

- CALREC ALPHA DIGITAL AUDIO CONSOLE
- BLUEFIN DSP PROCESSING
- 340 CHANNELS WITH FULL SIGNAL PROCESSING
- 48 MULTI-TRACK BUSSES
- 20 AUX BUSSES
- 60 FADER, A/B LAYERS
- 4 MADI PORTS
- 3 HYDRA I FIELD BOX (12X4)
- 1 DIGICART

### MICROPHONES

- 4 LONG SHOTGUN MICROPHONES

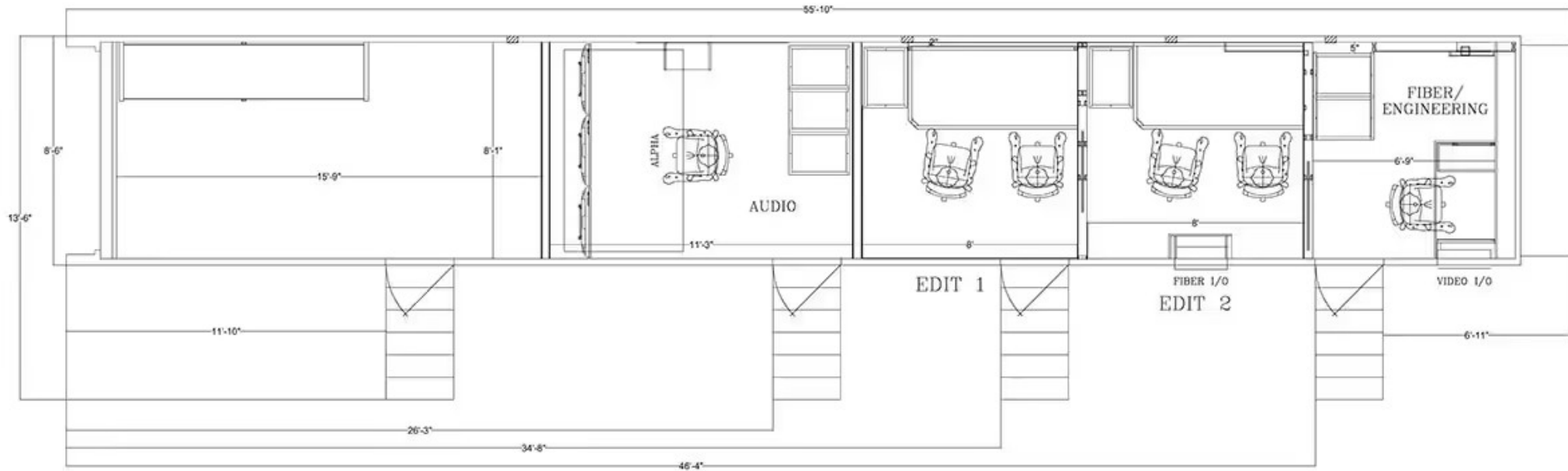
### CABLES

- ASSORTED SINGLE LINE XLR CABLES
- 2 SETS OF 75' 4/0 POWER CABLES



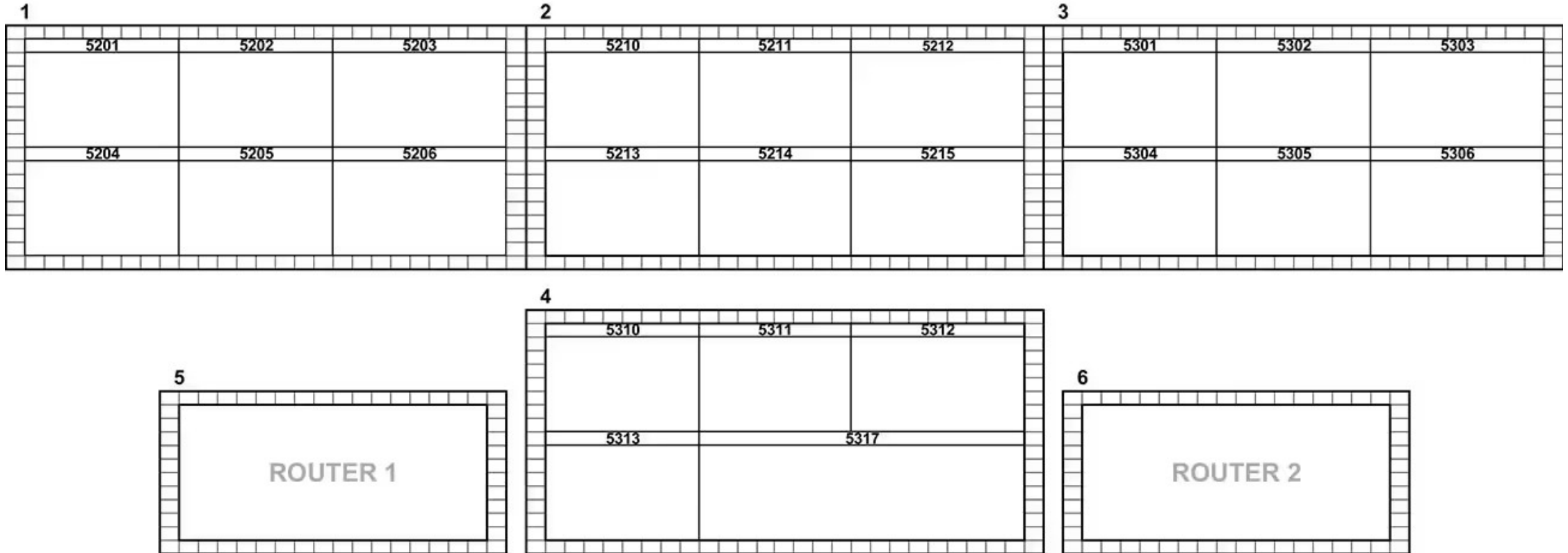
ST25

# FLOORPLAN



ST25

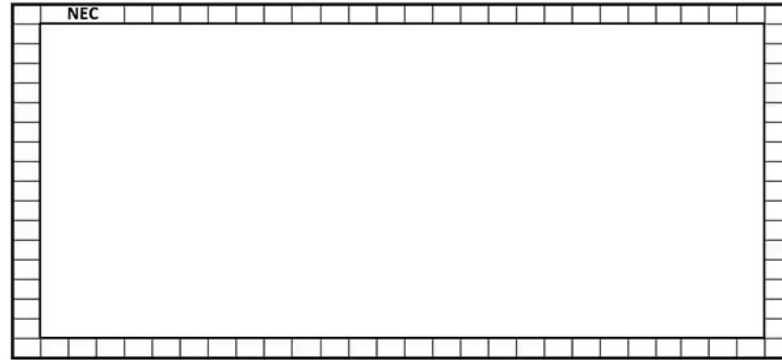
# AUDIO MONITOR WALL



ST25

# EDIT MONITOR WALL

Middle



Left



Right

