



# SUPERSHOOTER 8 US MOBILE UNIT INFORMATION

Updated 05/29/2026

[NEPGROUP.COM](http://NEPGROUP.COM)



IP Based, TFC Driven, 1080p and HDR Capable | Travels with support unit, ST8

# SUPERSHOOTER 8: TECHNICAL SPECIFICATIONS

## PRODUCTION SWITCHER

- KAYENNE X FRAME - 8 M/E

## CAMERAS

- 4 SONY HDC 3500 CAMERAS
- 2 SONY HDC2500 CAMERAS
- 10 SLEDS
- 10 HEAVY PANHEAD X/STICKS
- 6 LIGHTWEIGHT STICKS
- 1 STUDIO BUILDOUT KIT
- 1 ENG KIT

## LENSES

- 10 HARD LENSES
- 10 HANDHELD HENSES
- 2 WIDE ANGLE LENSES

## RECORD/REPLAY

- 5 EVS XT-VIA 12 CHANNEL
- 1 EVS XS VIA 6 CHANNEL SPOT BOX
- 1 EVS XFILE3
- 2 EVS IP DIRECTOR
- 1 EVS XT ACCESS
- 1 KIPRO-GO USB RECORDER

## AUDIO

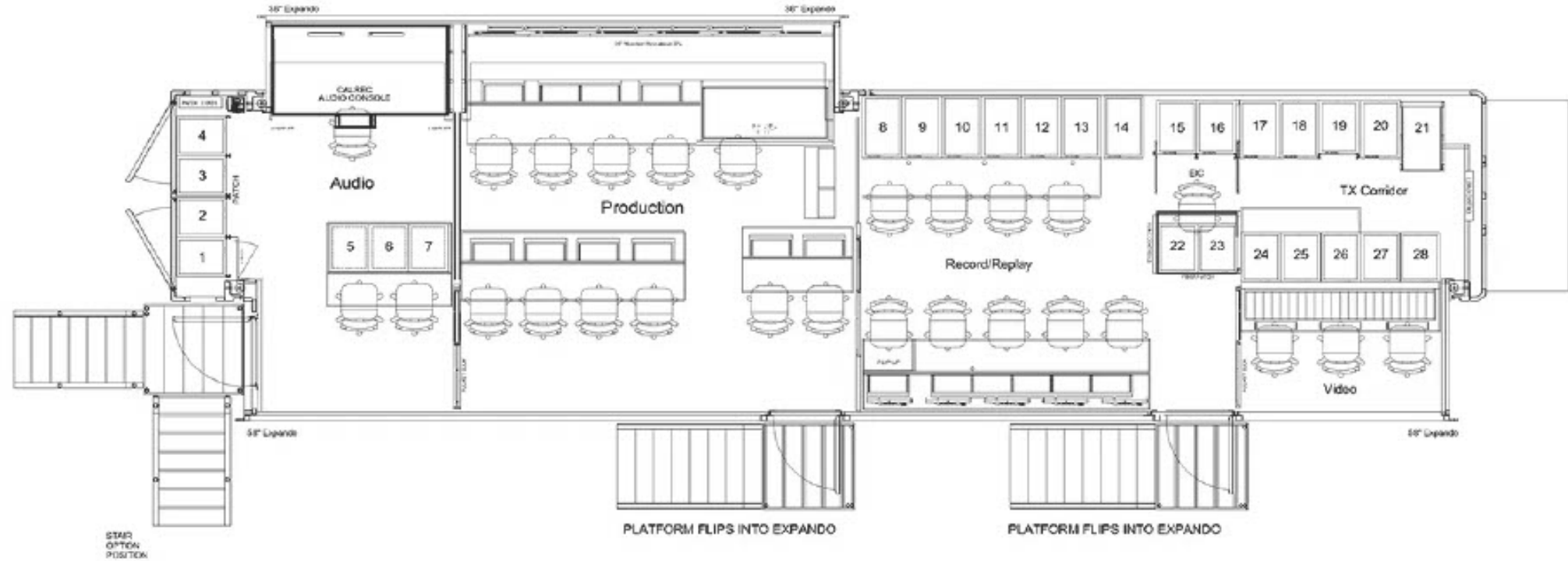
- CALREC APOLLO WITH 64 DUAL FADERS

## SUPPORT EQUIPMENT

- LAWO IP ROUTER
- HD VIDEO 670 INPUTS X 734 OUTPUTS
- SDI VIDEO 442 INPUTS X 393 OUTPUTS
- 380 X 312 DE-EMBED/EMBED
- ANALOG AUDIO 96 INPUTS X 96 OUTPUTS
- AES 96 INPUTS X 96 OUTPUTS
- MADI 18 INPUTS X 18 OUTPUTS
- 1 FS HDR FRAME SYNC
- 30 UDX FRAME SYNCs
- 2 FIBER FIELD/BOOTH KITS
- 3 HYDRA BOXES
- 2 32X32 AT300 KITS
- BASIC TRUCK COMPLIMENT OF CABLE, MICS, ETC.

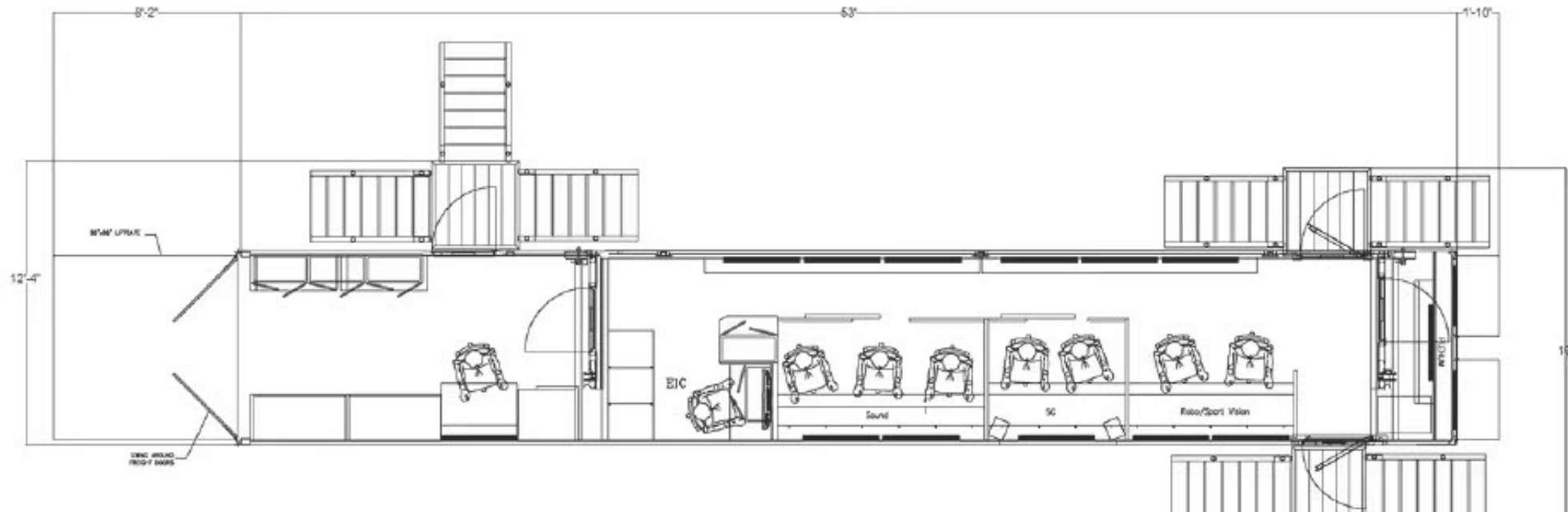


# SUPERSHOOTER 8 FLOORPLAN



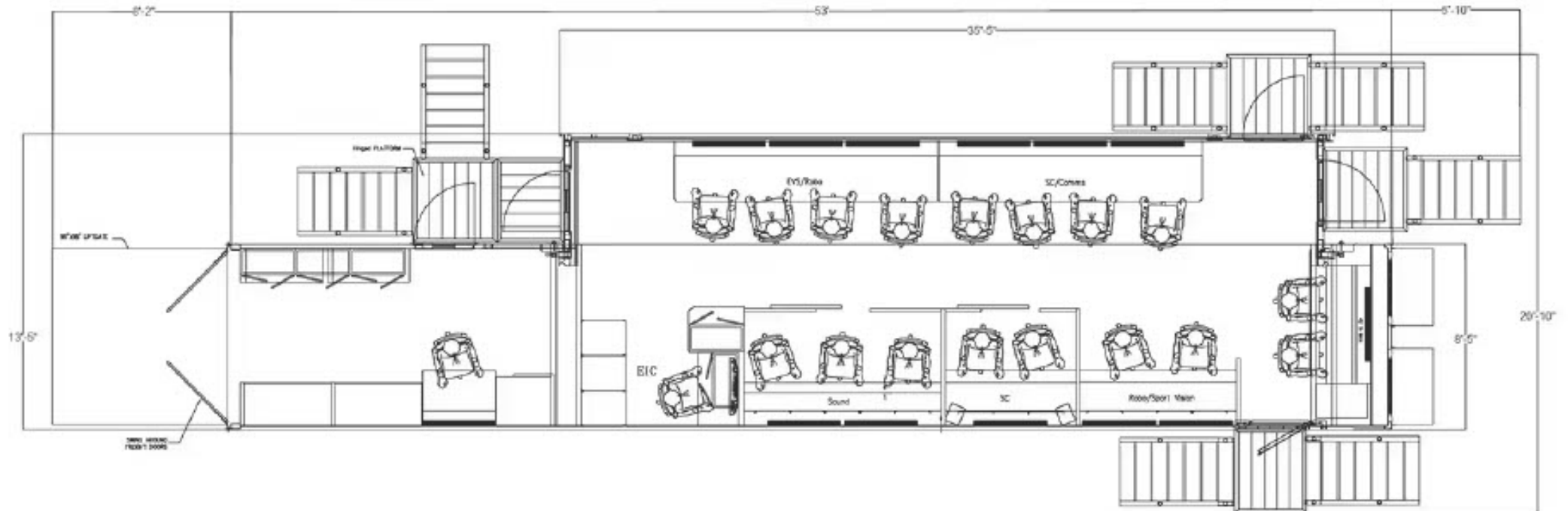
ST8 SUPPORT

# OPTION 1 FLOORPLAN



## ST8 SUPPORT

# OPTION 2 FLOORPLAN



# SUPERSHOOTER 8

# PRODUCTION MONITOR WALL



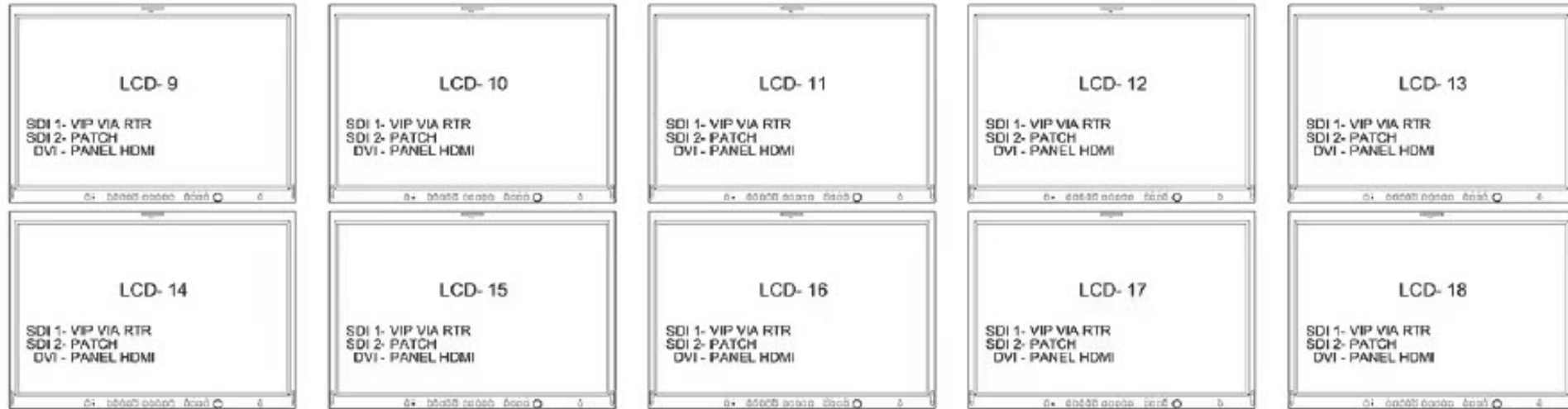
## SUPERSHOOTER 8

# RECORD & REPLAY FRONT MONITOR WALL



## SUPERSHOOTER 8

# RECORD & REPLAY REAR MONITOR WALL



## SUPERSHOOTER 8

# VIDEO MONITOR WALL

