



TS2
US MOBILE UNIT
INFORMATION

Updated 05/29/2026

1080p Capable | Travels with B-Unit, TS2B

TS2: TECHNICAL SPECIFICATIONS

POWER REQUIREMENTS

- 2 208 VOLTS, 3 PHASE, 200 AMPS
- B UNIT: 1 208 VOLT, 3 PHASE, 200 AMP

PRODUCTION SWITCHER

- KAYENNE K FRAME - 4 M/E

CAMERAS

- 2 SONY HDC4300 CAMERAS
- 10 SONY HDC2500 CAMERAS
- 7 SLEDS
- 7 HEAVY PANHEAD W/STICKS
- 5 LIGHTWEIGHT STICKS

LENSES

- 7 HARD LENSES
- 5 HANDHELD LENSES
- 2 WIDE ANGLE LENSES

AUDIO

- CALREC APOLLO WITH 64 DUAL FADERS

COMMS

- RTS ADAM INTERCOM SYSTEM

RECORD/REPLAY

- 4 EVS XT3 12 CHANNEL LSM
- 1 EVS XS 6 CHANNEL SPOT BOX
- 1 EVS XFILE3
- 1 EVS XT ACCESS
- 1 SONY HDW-M2000 HDCAM & IMX VTR

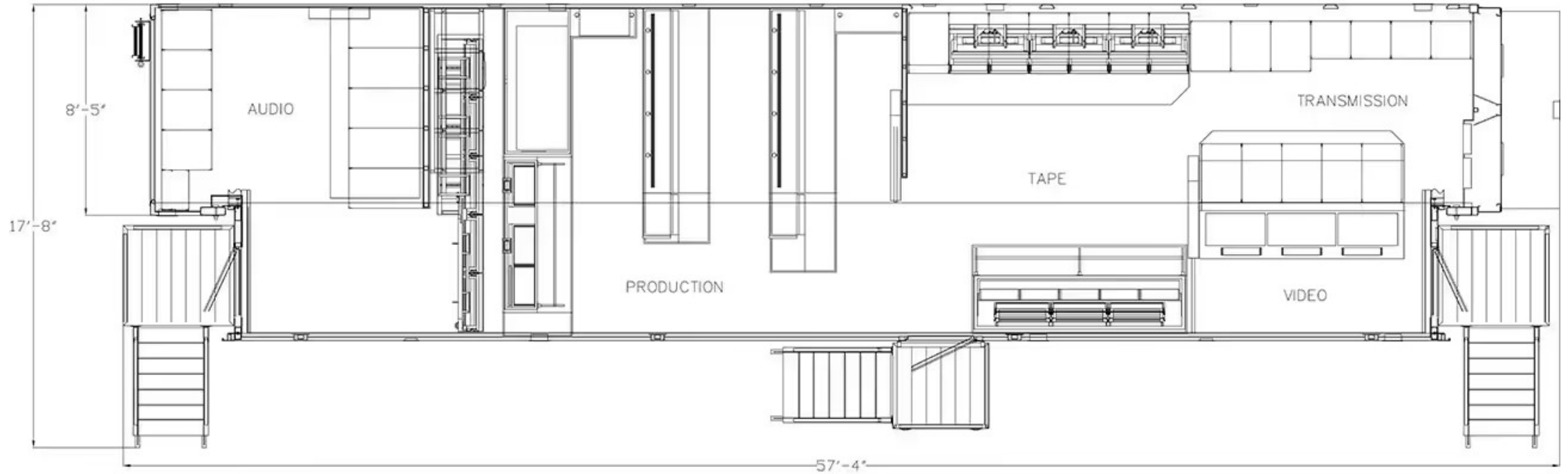
SUPPORT EQUIPMENT

- EVERTZ EQX 3G ROUTER
- HD VIDEO - 558 INPUTS X 302 OUTPUTS
- 192 INPUTS X 180 OUTPUTS EMBED/DE-EMBED(16 CHANNELS)
- MADI 16 INPUTS X 16 OUTPUTS
- AES 192 INPUTS X 192 OUTPUTS
- ANALOG AUDIO 96 INPUTS X 96 OUTPUTS
- 5 AJA FSHDR
- 2 AJA FS1
- 10 COBALT UDX
- 3 FIBER BOOTH FIELD KITS
- 2 HYDRA BOXES
- BASIC TRUCK COMPLIMENT OF CABLE, MICS, ETC.



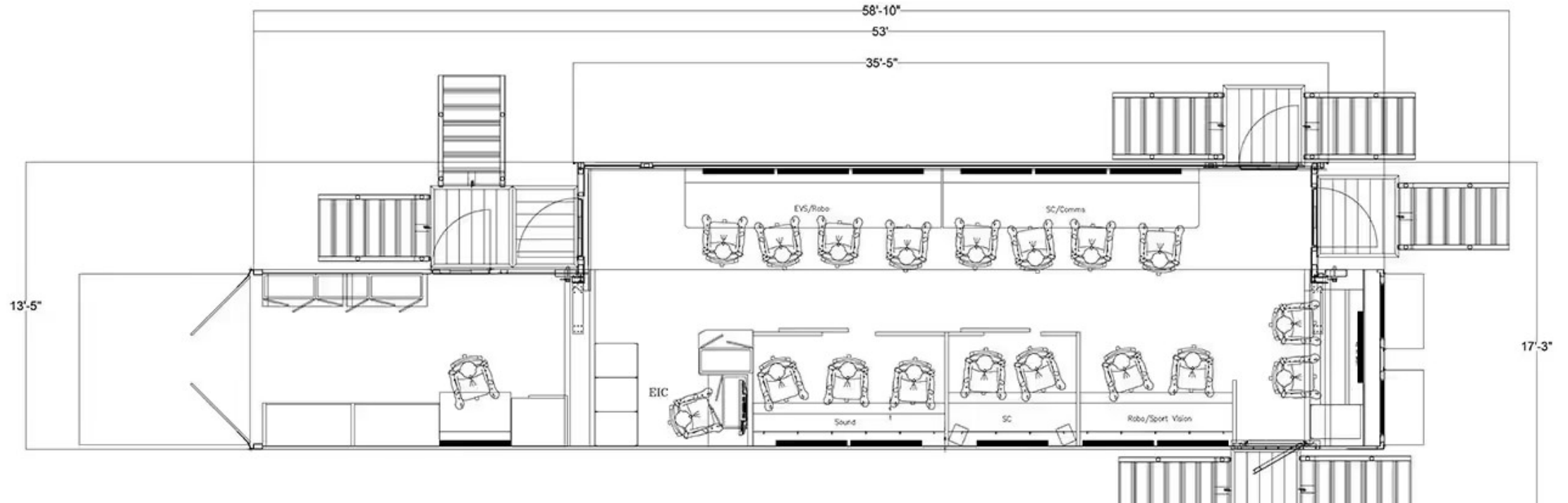
TS2 A-UNIT

FLOORPLAN



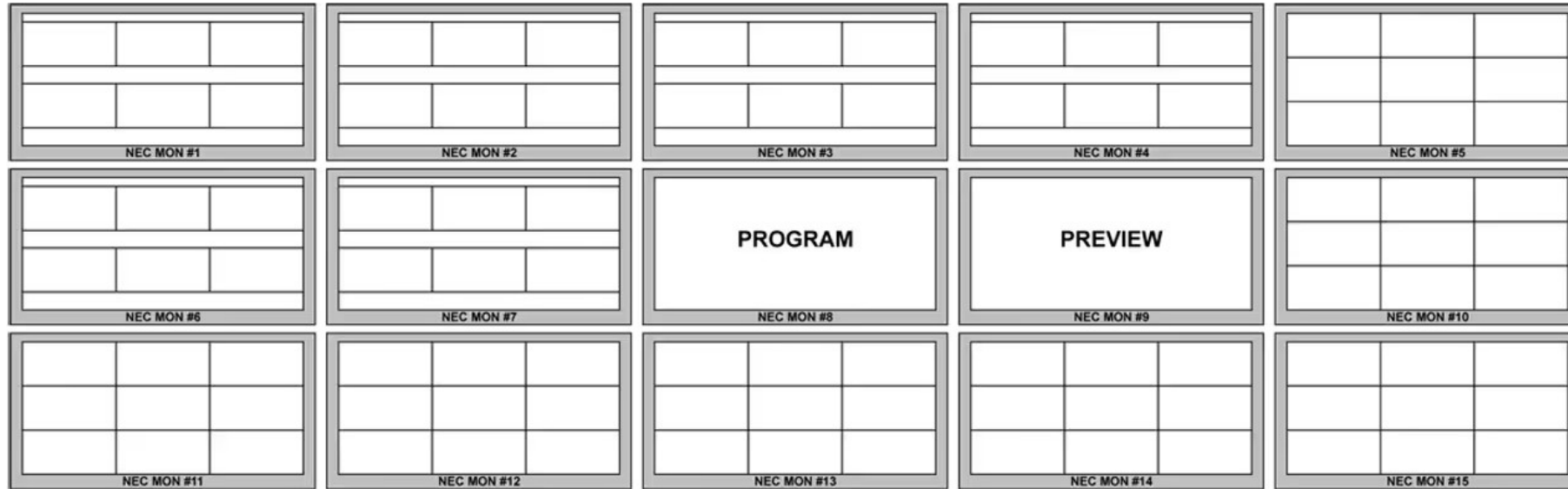
TS2 B-UNIT

FLOORPLAN



TS2

PRODUCTION MONITOR WALL



TRUCK DEFAULT SWITCHER INPUT SHEET

IN 1 CAM 1	IN 11 CAM 11	IN 21 UDX 5 / CAM 21	IN 31 FS-1 #5 / CAM 31	IN 41 EVS 1-1	IN 51 EVS 5-1	IN 61 EVS 8-2	IN 71 BUG VIDEO 1	IN 81 CG VIDEO 2-1	IN 91 CLIP PLYR 2-1
IN 2 CAM 2	IN 12 CAM 12	IN 22 UDX 6 / CAM 22	IN 32 FS-1 #6 / CAM 32	IN 42 EVS 1-2	IN 52 EVS 5-2	IN 62 EVS 8-3	IN 72 BUG KEY 1	IN 82 CG KEY 2-1	IN 92 CLIP PLYR 2-2
IN 3 CAM 3	IN 13 CAM 13	IN 23 UDX 7 / CAM 23	IN 33 FS-1 #7 / CAM 33	IN 43 EVS 1-3	IN 53 EVS 5-3	IN 63 SPOT-1	IN 73 BUG VIDEO 2	IN 83 CG VIDEO 2-2	IN 93 CLIP PLYR 3-1
IN 4 CAM 4	IN 14 CAM 14	IN 24 UDX 8 / CAM 24	IN 34 FS-1 #8 / CAM 34	IN 44 EVS 2-1	IN 54 EVS 6-1	IN 64 SPOT-2	IN 74 BUG KEY 2	IN 84 CG KEY 2-2	IN 94 CLIP PLYR 3-2
IN 5 CAM 5	IN 15 CAM 15	IN 25 UDX 9 / CAM 25	IN 35 FS-1 #9 / CAM 35	IN 45 EVS 2-2	IN 55 EVS 6-2	IN 65 SPOT-3	IN 75 TELE VIDEO	IN 85 DVE 1	IN 95 BARS
IN 6 CAM 6	IN 16 CAM 16	IN 26 UDX 10 / CAM 26	IN 36 FS-1 #10 / CAM 36	IN 46 EVS 2-3	IN 56 EVS 6-3	IN 66 SPOT-4	IN 76 TELE KEY	IN 86 DVE 2	IN 96 BLACK
IN 7 CAM 7	IN 17 UDX 1 / CAM 17	IN 27 FS-1 #1 / CAM 27	IN 37 FS-1 #11 / CAM 37	IN 47 EVS 3-1	IN 57 EVS 7-1	IN 67 VTR 1	IN 77 CG VIDEO 1-1	IN 87 REMOTE 1	
IN 8 CAM 8	IN 18 UDX 2 / CAM 18	IN 28 FS-1 #2 / CAM 28	IN 38 FS-1 #12 / CAM 38	IN 48 EVS 3-2	IN 58 EVS 7-2	IN 68 VTR 2	IN 78 CG KEY 1-1	IN 88 REMOTE 2	
IN 9 CAM 9	IN 19 UDX 3 / CAM 19	IN 29 FS-1 #3 / CAM 29	IN 39 FS-1 #13 / CAM 39	IN 49 EVS 4-1	IN 59 EVS 7-3	IN 69 VTR 3	IN 79 CG VIDEO 1-2	IN 89 CLIP PLYR 1-1	
IN 10 CAM 10	IN 20 UDX 4 / CAM 20	IN 30 FS-1 #4 / CAM 30	IN 40 FS-1 #14 / CAM 40	IN 50 EVS 4-2	IN 60 EVS 8-1	IN 70 VTR 4	IN 80 CG KEY 1-2	IN 90 CLIP PLYR 1-2	

MONITOR WALL TEMPLATES

