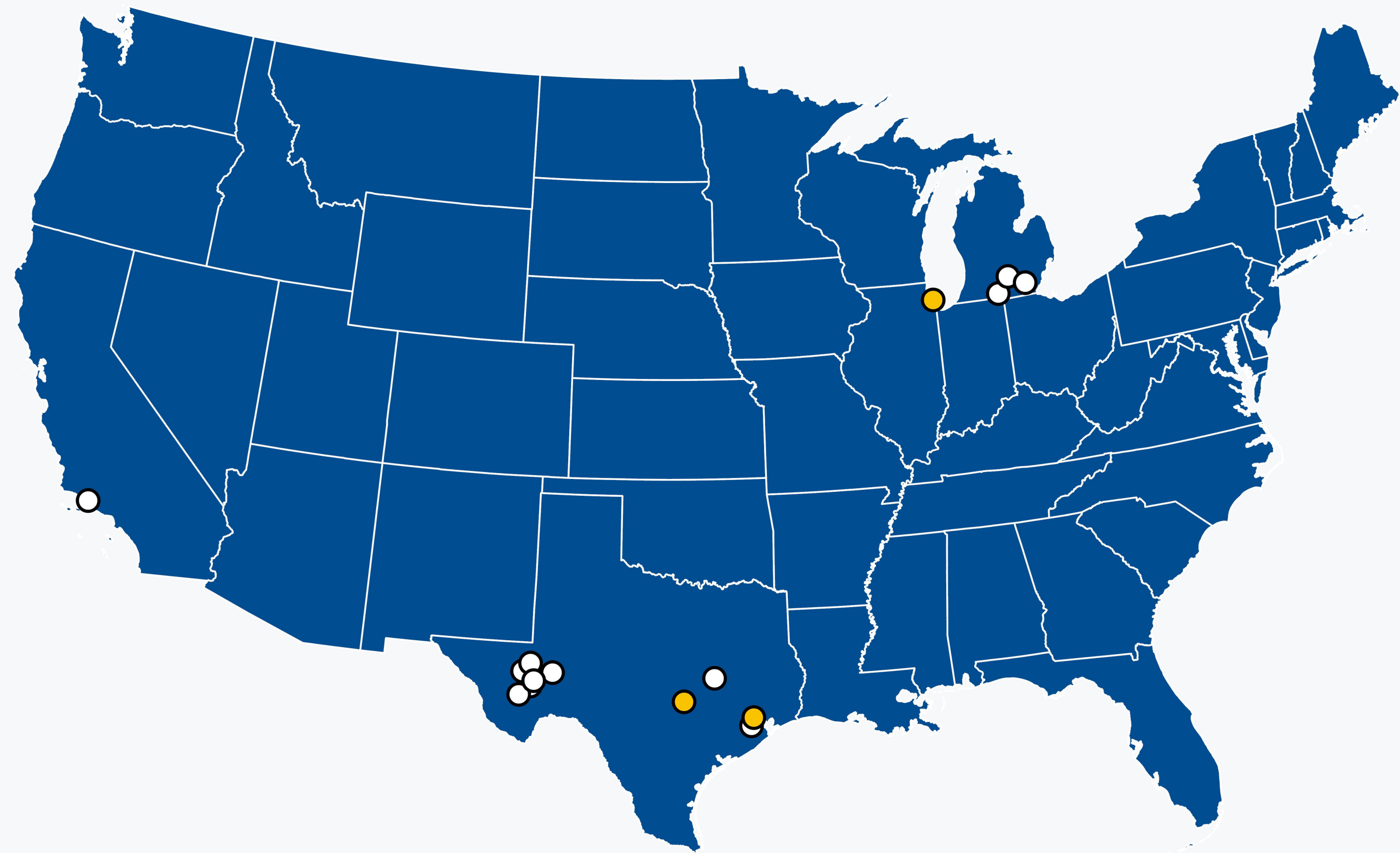


WHO WE ARE

A Pioneer in U.S. Energy Storage

Jupiter Power builds and operates safe, reliable standalone battery energy storage projects that help make the electric grid more responsive and resilient. Founded in 2017, we were among the first companies dedicated entirely to standalone energy storage — and today we operate one of the largest portfolios in the United States.



— DEVELOPMENT FOOTPRINT ○ OPERATING/IN CONSTRUCTION ● CORPORATE OFFICES

12

Operating projects across the U.S.

7

Projects under construction

175+

Team members led by energy industry veterans

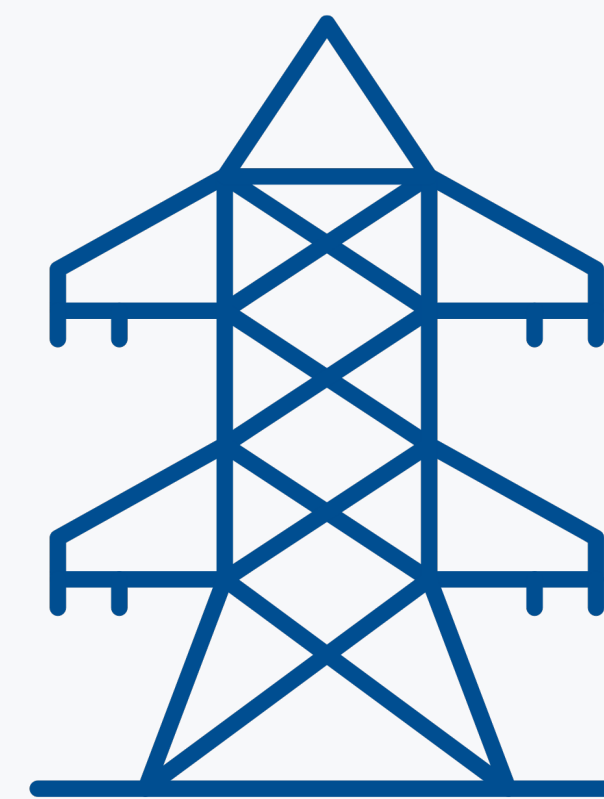
Reliable & Cost-Effective Infrastructure

Reliable & Fast-Acting



- ✓ Batteries provide reliable, flexible support to the grid by storing electricity & delivering it when it's needed most.
- ✓ Batteries can respond within fractions of a second to stabilize the electric grid when the system is stressed.

Supporting Infrastructure



- ✓ Electricity demand varies hourly, daily, and seasonally. Renewable energy resources are also highly variable. Batteries support variations in both supply and demand.
- ✓ Batteries can avoid and defer costly transmission & generation upgrades.

Consumer Cost Savings



- ✓ With electricity demand rising, batteries create additional supply on the grid and help keep costs down.
- ✓ By storing energy when electricity is abundant and cheap, and releasing it during peak demand, batteries reduce overall costs.

How Does Battery Energy Storage Work?

1

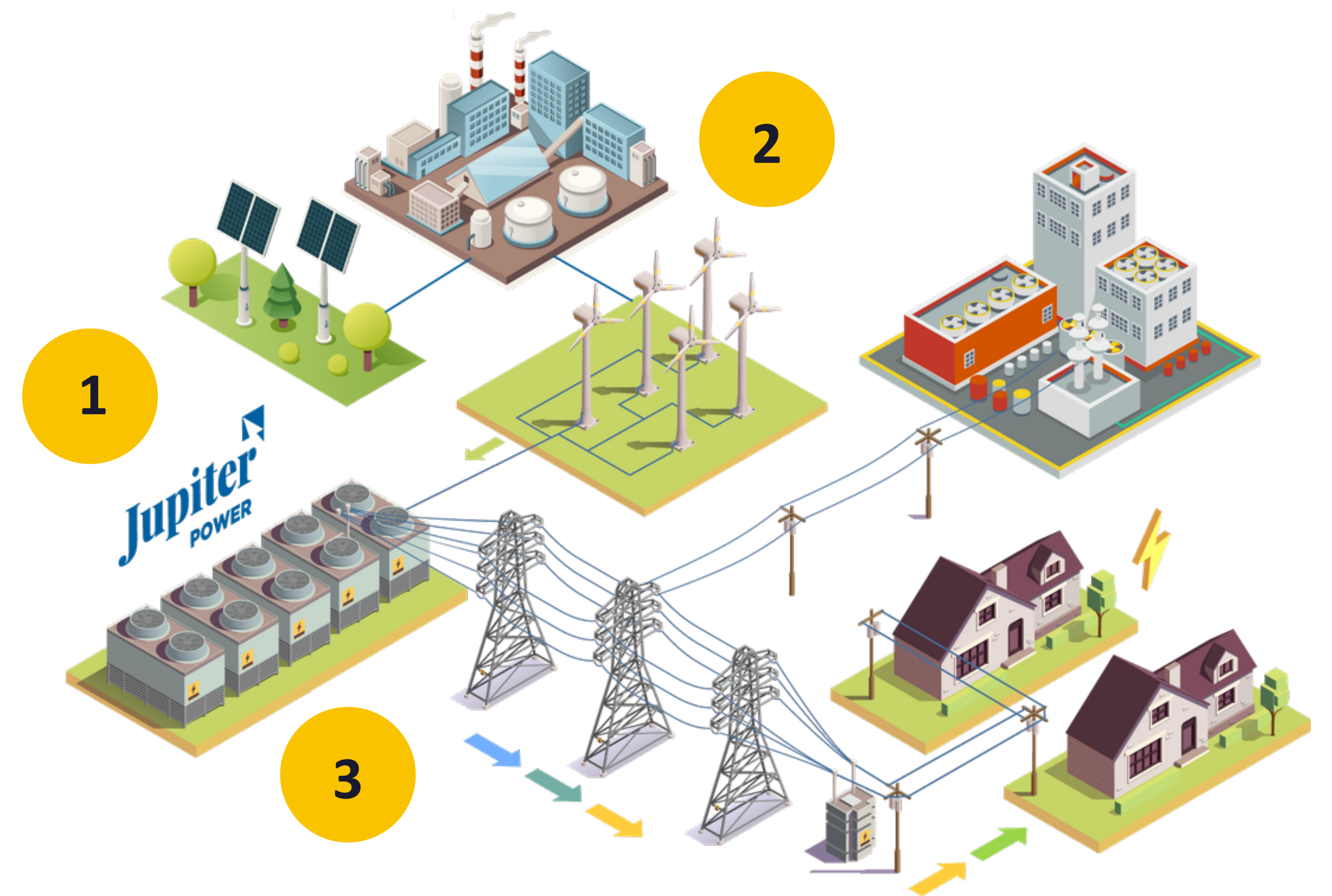
A battery storage facility is connected to the regional electric grid via an electric substation.

2

The batteries charge from the electric grid, and the various power sources supplying the grid at the time.

3

The batteries discharge when power is needed on the electric grid via the same substation.



Where does the energy come from?

Rather than being tied to one single source of energy, Jupiter's batteries charge from the grid — utilizing the full mix of resources available on the system.

Where does the energy go?

Jupiter puts power directly back onto the grid when needed — during high demand, when other generating sources are offline or at low production, or when the grid operator calls on batteries to perform.

Battery Storage on the Grid Today

299

Operational BESS (20+ MW)

117

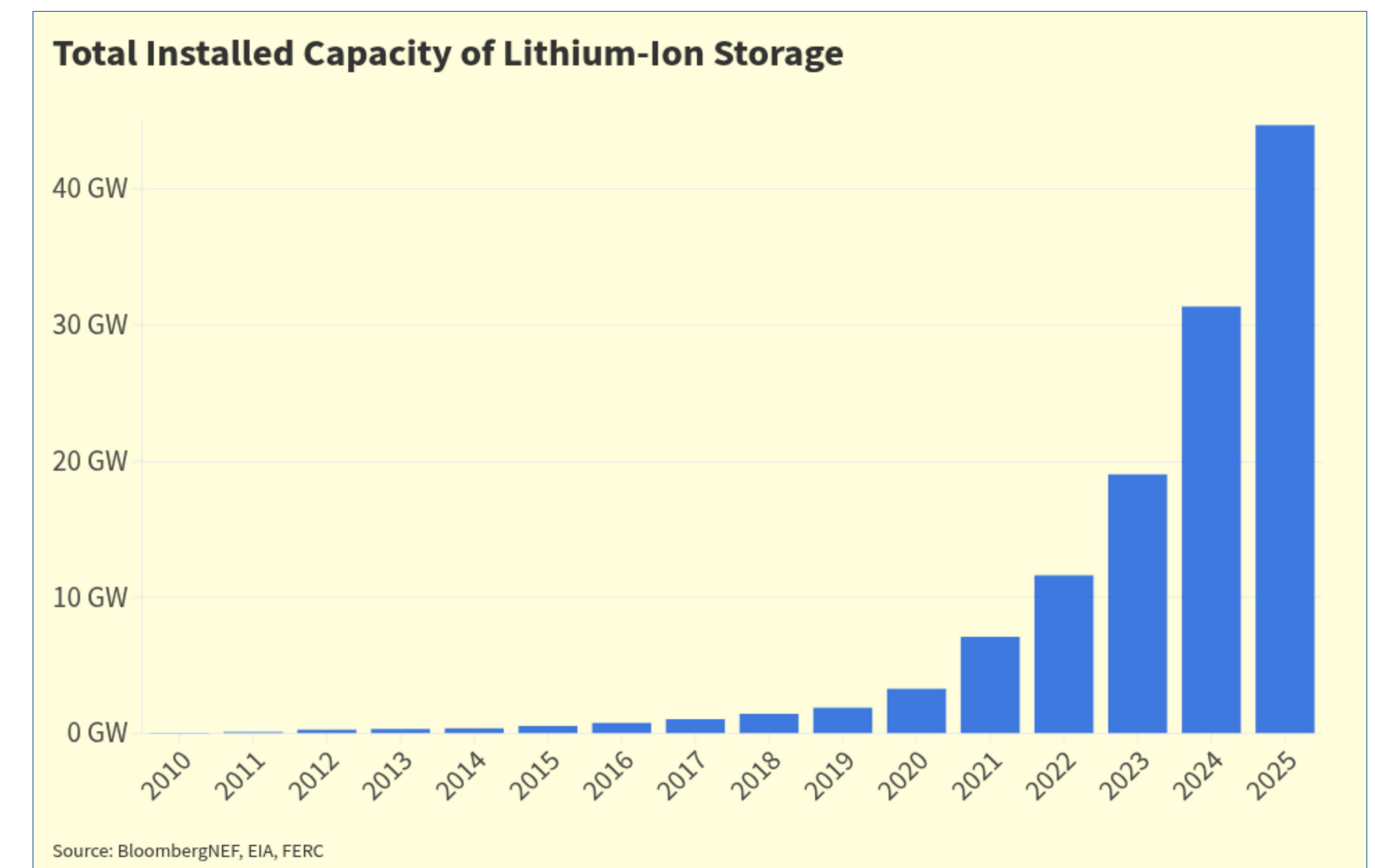
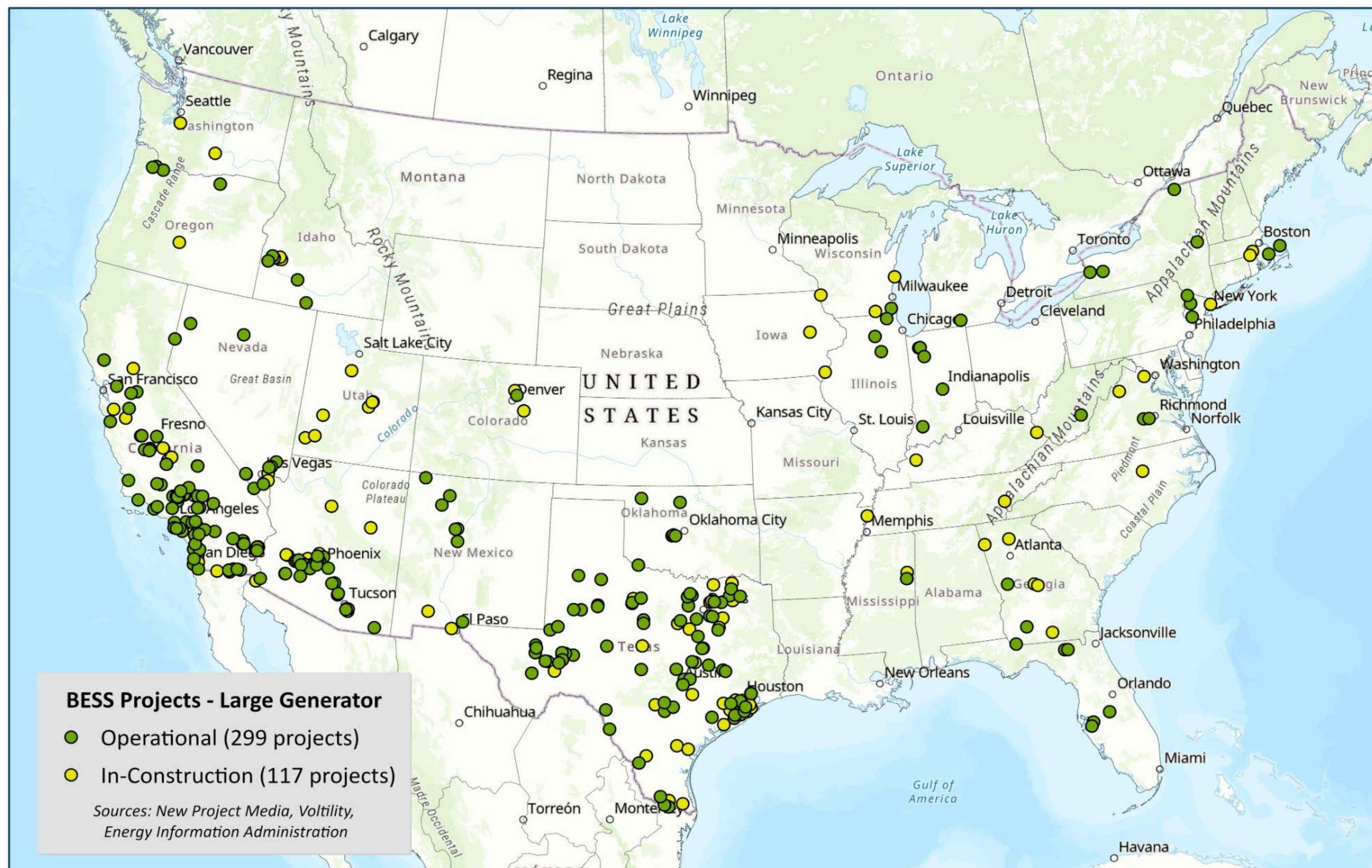
Under construction

44,000+ MW

Total installed capacity

100 MW

Average operating BESS



At the end of 2025, there were 299 large generator (20+ MW) operational BESS and 117 BESS in construction, with over 44,000 MW total installed capacity of lithium-ion BESS in the United States. The average operating BESS has a capacity of 100 MW.



HOW IT WORKS

Battery Energy Storage Systems

1

CELL



Basic unit of a battery

2

MODULE



Collection of interconnected cells

3

RACK



Collection of interconnected modules

4

CONTAINER



Pre-fabricated, factory-tested unit

5

PROJECT



Network of interconnected containers

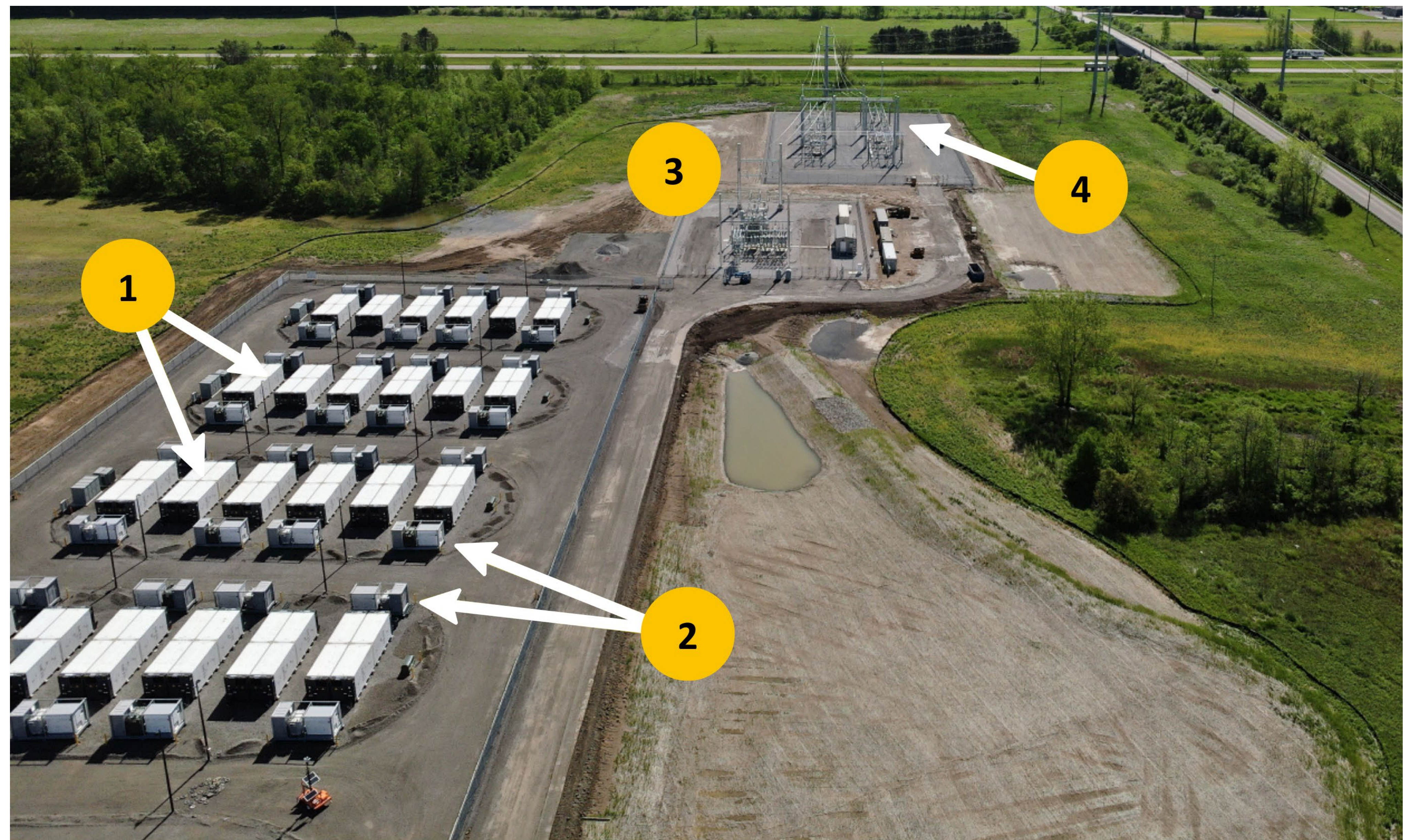
Battery energy storage systems are built in layers — from battery cells to full grid-connected projects

Jupiter Power's Projects: Tibbits Energy Storage



Coldwater, MI
100 MW/400 MWh

1. Battery containers
2. Power conversion systems
3. Project substation
4. Existing substation – grid connection



THE PROJECT

Designed to be a Safe, Low-Impact Neighbor



The Project:

- Utilizes not more than 30 acres of the 45-acre project boundary
- Generates minimal noise and no emissions or pollution during charging or discharging
- Produces minimal to zero traffic impacts after construction
- Compliant with all recently updated fire safety codes and standards
- Establishes permanent buffers to wetlands adjacent to Fisher Creek Park
- Preserves existing tree buffers
- Uses no regular nighttime lighting to reduce visual impacts

Investing in the Community

**\$11,400,000-
\$16,300,000**

Estimated total local tax revenue over 20 years to support schools, roads, & other public spending

**\$780,000-
\$1,100,000**

Estimated annual local tax revenues, operating years 3-12*

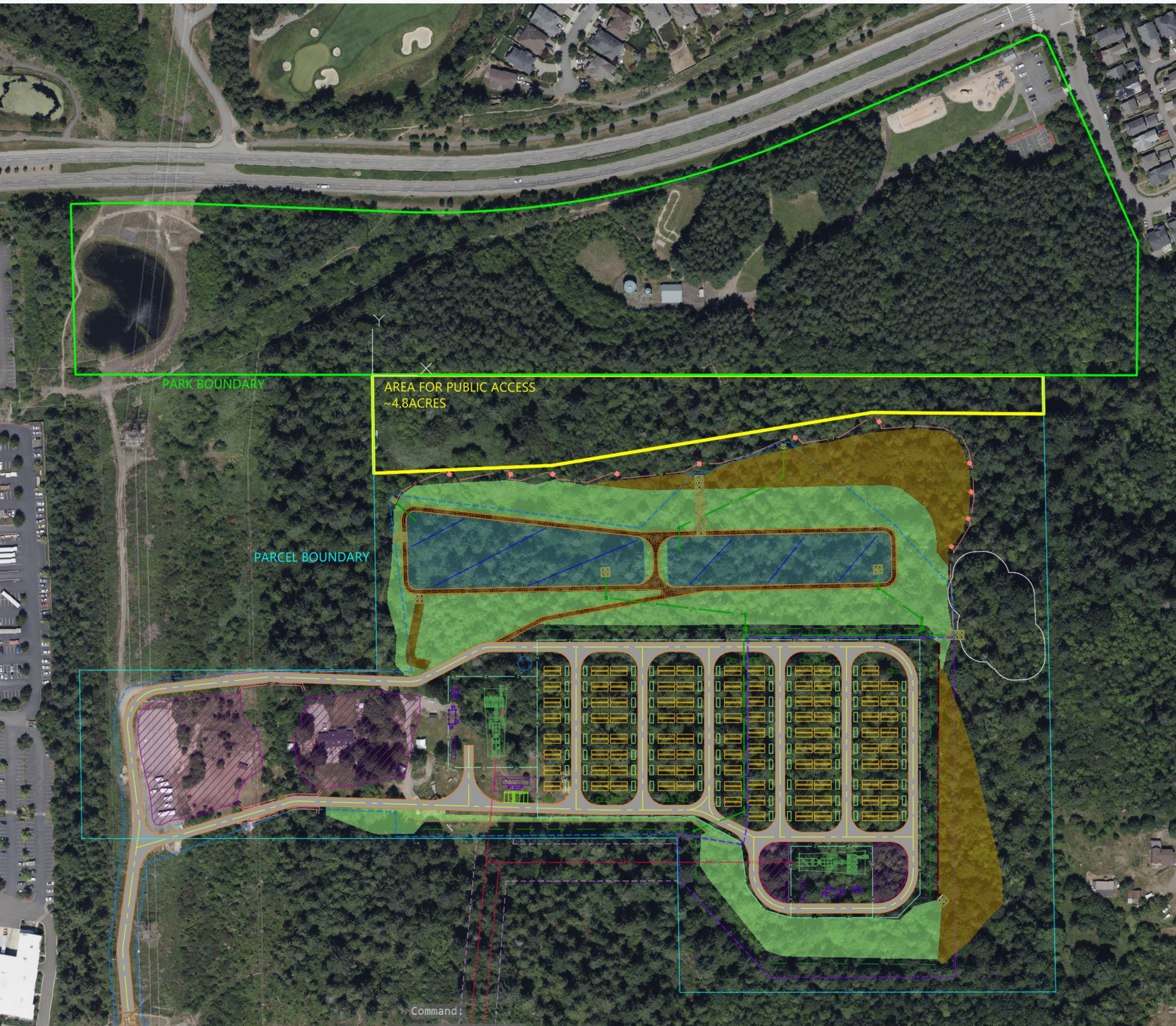
** per pending legislation
HB 1960 (Ramel)*

~100

High wage local union jobs created during construction period



Partnership supporting local workforce training programs



COMMUNITY BENEFITS

Potential 20% Increase to Fisher Creek Park Area

- Cascadia Ridge Resiliency is willing to designate at least 4.8 acres of existing natural areas for public access along the boundary of Fisher Creek Park
- Additionally, the project will preserve existing tree buffers and establish wetland and stream buffers



Cascadia Ridge Resiliency

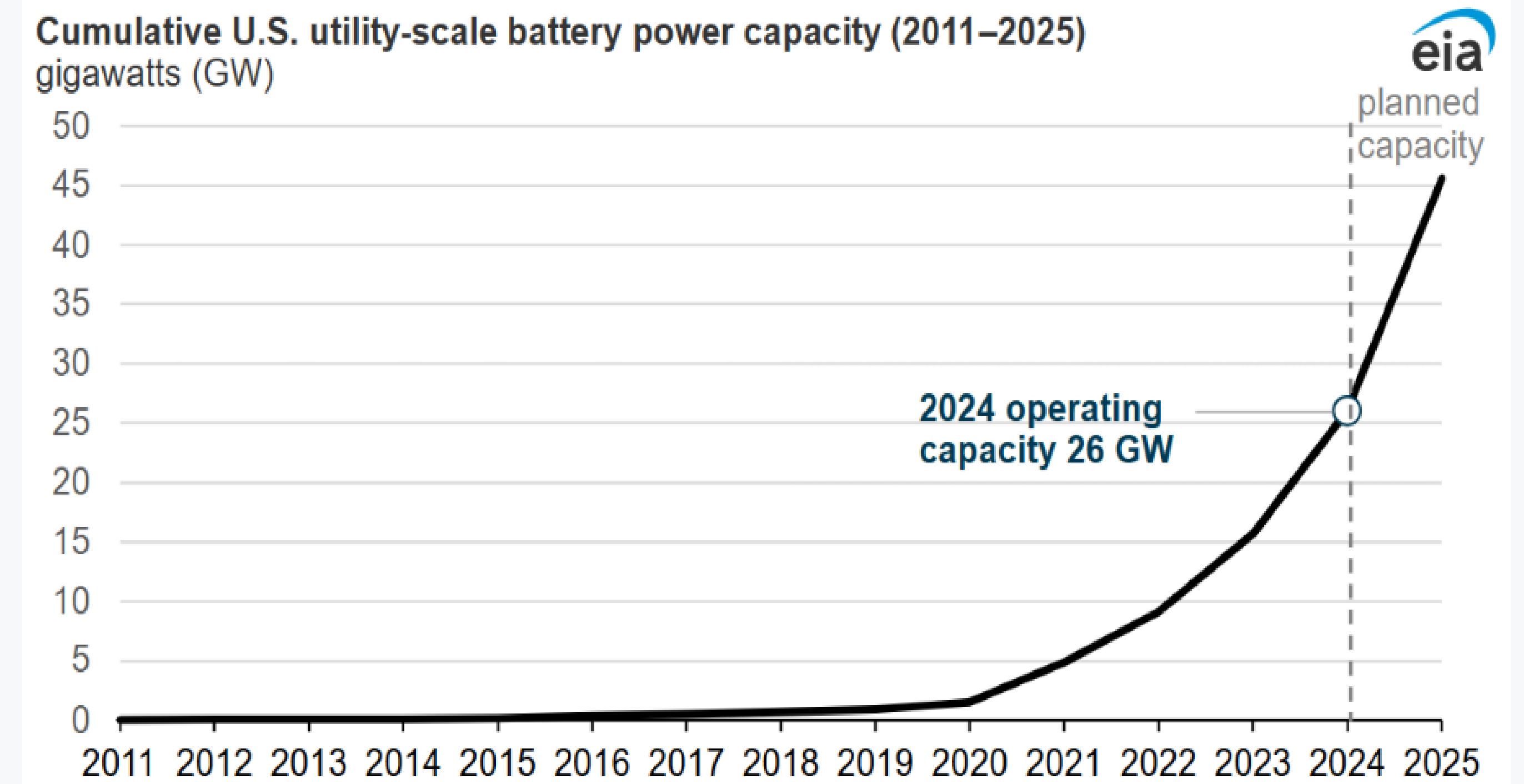
Draft Rendering (actual project may be smaller)

Hazard Considerations

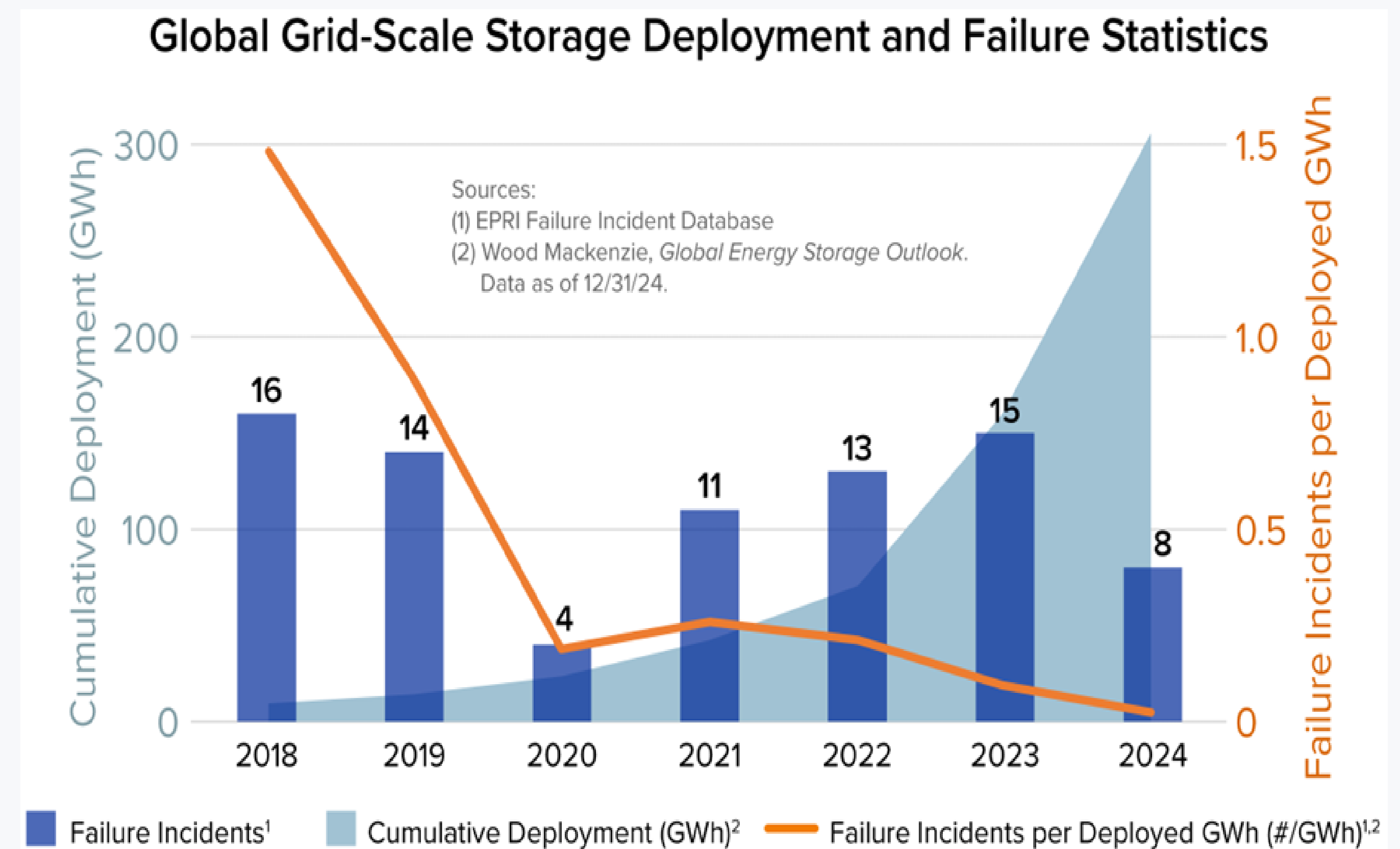
The hazards associated with battery energy storage systems are common considerations for many power/industrial facilities and are well understood within the fire protection industry. The emergence of industry standards such as NFPA 855 has significantly improved the safety of these systems.

BESS Safety Regulatory Updates and Performance

- **NFPA 855, IFC, and UL 9540** – Regulatory focus on emphasizing engineering analysis to mitigate failure consequences. Shifting focus on hazard mitigation, rather than reactive measures.
- **Testing and Analysis** – Rigorous standardized safety testing frameworks to align with updated regulatory codes, including LSFT.
- **Proven Safety Resilience:** As evidenced by engineering improvements and more rigorous regulatory standards, fire-related incidents remain disproportionately low compared to the rapid global expansion of BESS.
- **Drastic Failure Rate Reduction:** 97% drop in global grid-scale BESS failure rates between 2018 and 2023.



Data source: U.S. Energy Information Administration, Preliminary Monthly Electric Generator Inventory, January 2025



Electric Power Research Institute, "Insights from EPRI's Battery Energy Storage Systems (BESS) Failure Incident Database," 2024.

Safety at Every Stage

Jupiter Power's top priority is to operate safe and reliable energy storage projects.

Our team ensures clear, open, and regular communication channels with all first responders, including regular trainings.



- All energy storage components are UL tested.
- The project is designed to prevent small fires from spreading from one component to another.
- Internal setbacks protect adjacent properties from any fire risks or health impacts.
- A Fire Response Command Post will be located outside the facility and will provide first responders with 24/7 contact with Jupiter fire experts as needed.
- Jupiter Power incorporates the latest industry design standards, often above and beyond local code requirements. All projects follow the latest version of NFPA 855 and IFC/IBC codes.
- Members of the Jupiter Power team regularly attend NFPA meetings to stay current on pending code updates.

Safety at Every Stage

Pre-construction risk assessments have allowed Jupiter and Fire Risk Alliance to develop response plans that define the training we provide to emergency services to enhance their safety and to ensure incident mitigation and containment.

Planning

Emergency Response Plan (ERP)

Comprehensive plan that evaluates site equipment, safety features, potential failure modes and risk mitigation tactics. Serves as the platform for fire department training.

Emergency Response Action Plan (ERAP)

Condensed quick action plan used by Jupiter and fire services to provide guidance on resolving alarm conditions.

Decommissioning Plan

Plan for safe removal and recycling of equipment at end of life or disposal in the event of a fire.

Training

Classroom

Hazards & response tactics for battery energy storage facility emergencies.

Site Familiarization Tours

Conducted with members of fire services to familiarize them with site equipment, safety features, means of entry & egress. Fire alarm scenarios and appropriate intervention strategies are discussed.

Exercises

Training exercises evaluate the effectiveness of our response plans. Exercises are scaled in complexity over a multi-year cycle.

CELL

Basic unit of a battery



MODULE

Collection of interconnected cells



RACK

Collection of interconnected modules



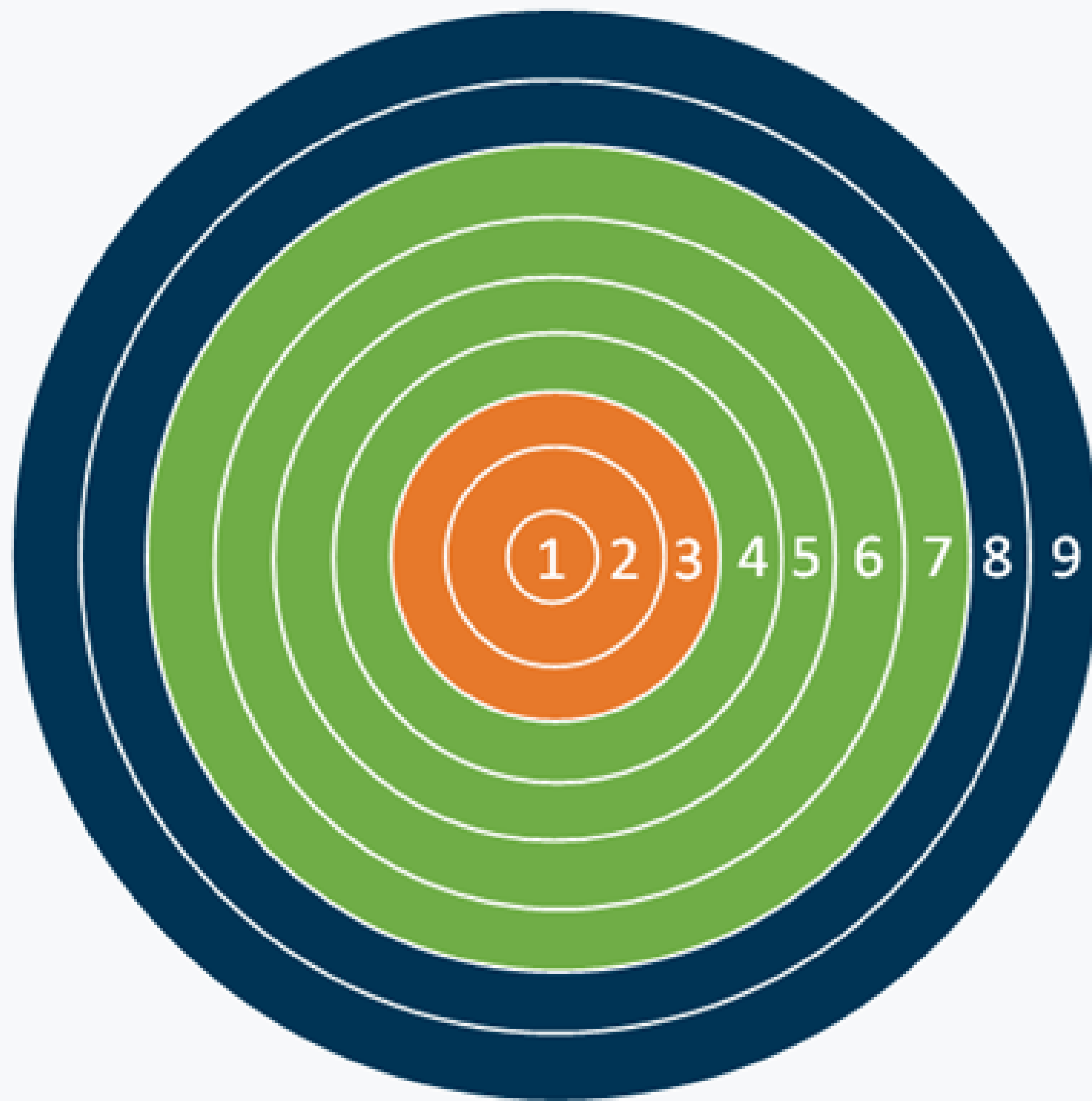
CONTAINER

Pre-fabricated, factory-tested



The Layered Approach

The BESS system and facility design uses a layered security approach to fire safety risk mitigation — sometimes referred to as the "onion" method.



1. Battery cell
2. Laboratory tests — UL 9540A
3. Standardized systems and components
4. Thermal Management System
5. Battery Management System
6. Fire and gas detection system
7. Explosion control system
8. 24-hr monitoring
9. Emergency response plan and training with the local fire departments

Jupiter is Committed to Robust Outreach and Engagement

Jupiter is coordinating with King County staff, the City of Snoqualmie, the King County Fire Marshal, the Eastside Fire District, the City of Snoqualmie Fire Department, and others.

If you have any comments or feedback on the project, please leave a comment card and/or reach out to us at:

CascadiaRidge@jupiterpower.io

Thank You for Attending the Community Open House!

Please visit our website for more information:



cascadiaridgeenergy.com