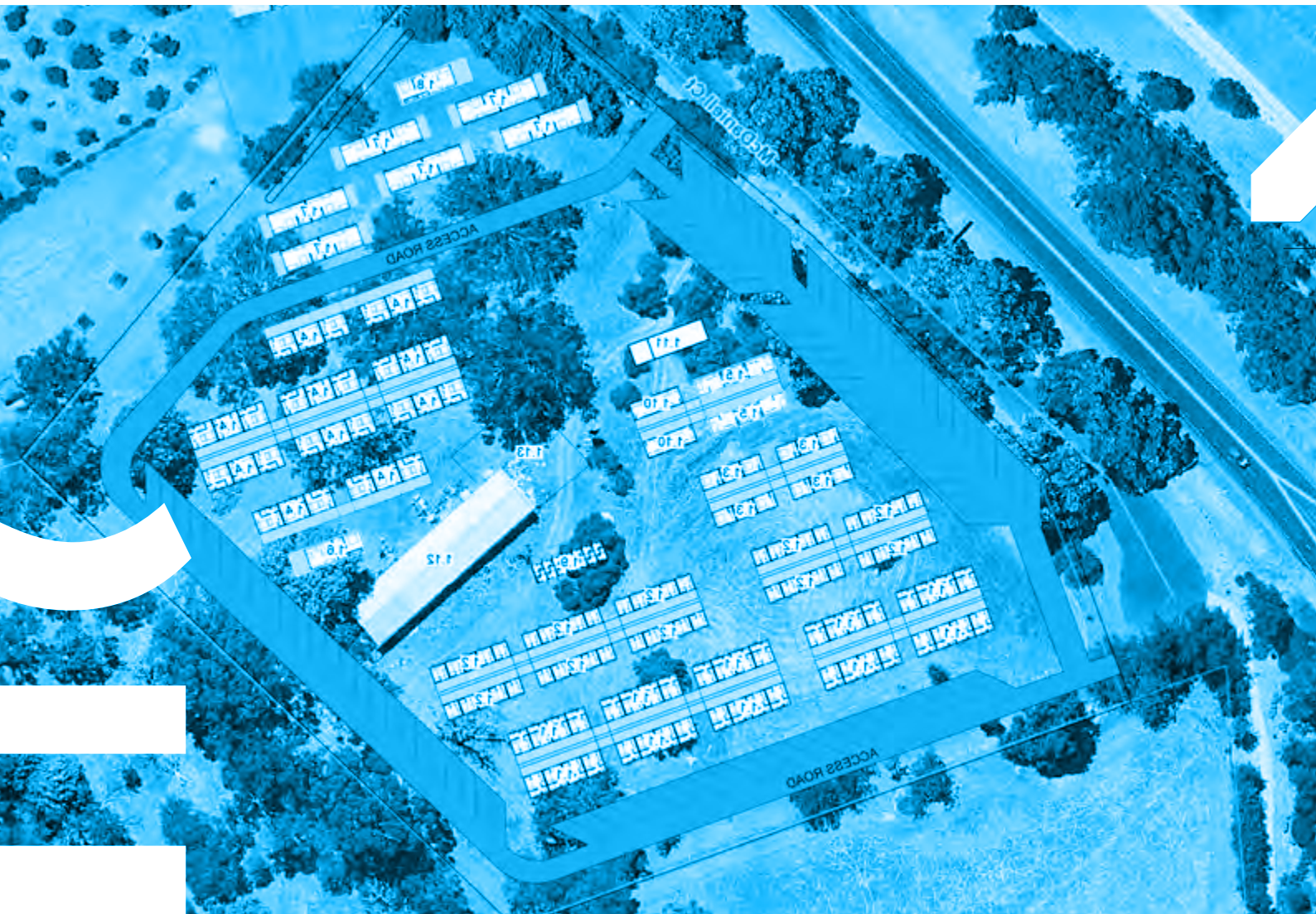
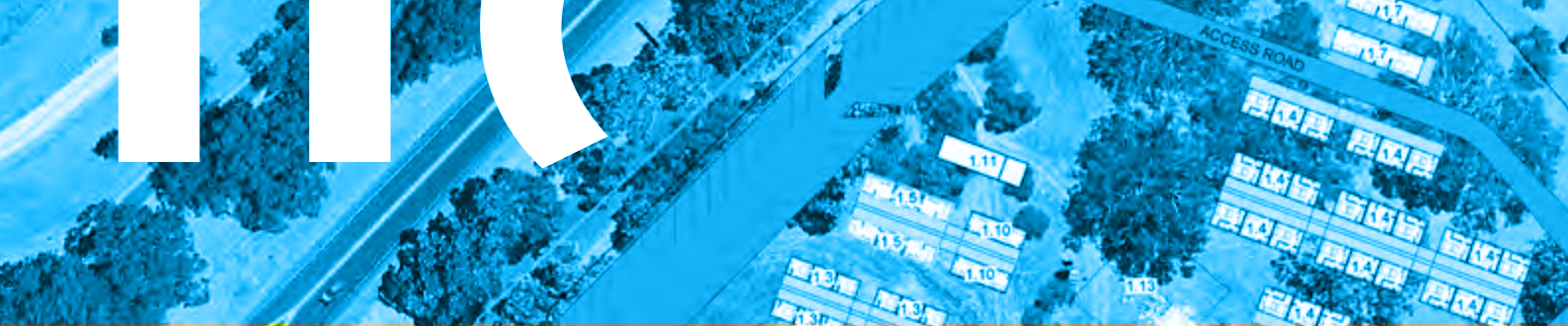


SW Workers Accommodation Village ROI





SW Workers Accommodation Village

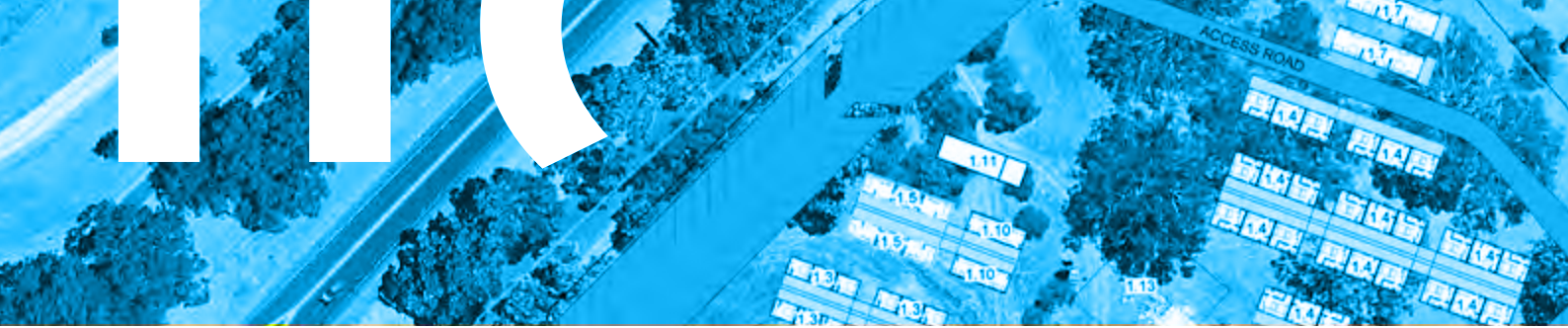
The Workers Accommodation Village offers a unique solution, bridging the gap between caravan parks and hotels.

The brief is to provide a secure, gated accommodation village with various levels of accommodation options and integrated shared social facilities. These shared spaces are intended to provide mixed opportunities for interaction among participants, enhancing the fabric of communal living and its responsibilities.

The project emphasizes sustainable practices in both its construction and use of services. The build form is designed to have minimal environmental impact through elevated living, stormwater bio-drainage, and modular construction. A passive energy approach of additional shading for structures and solar-powered solutions, such as site lighting towers, building and carpark PV systems will be implemented.

The location is to be centrally located between town/urban centres to reduce the impact of transport reach but also close enough to have town & coastal amenities available within walking distance.

The village is to be on a management profile of site managers and staff. Accommodation is offered with a minimum stay of one week, featuring fully serviced rooms with laundry changed weekly and on-site personal laundry facilities. Residents will also have access to extensive communal amenities, including a fully equipped kitchen, cold and dry storage, theatre,



library, recreation rooms, indoor and alfresco dining areas, BBQ and social alfresco spaces, gazebos, and an outdoor gym. BBQ and social alfresco, gazebos & outdoor gym.

→ Accommodation to appeal to mixed levels of single bed local amenities to self contained suites.

→ Breezeways to living pods

→ Register your interest now:

www.sandcastle.agency/south-west-workers-accommodation-roi

Go to the next
page for:

**SW Workers
Accommodation
Village Plans**



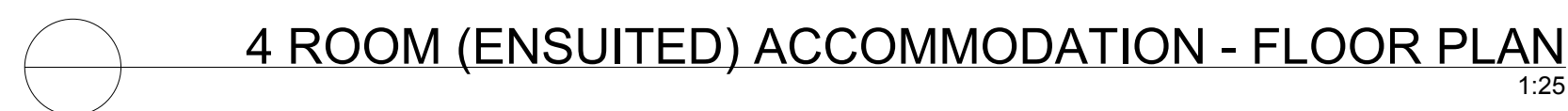
arc+d

Kieran O'Neill
0422 614 655
kieran@cogplex.com.au

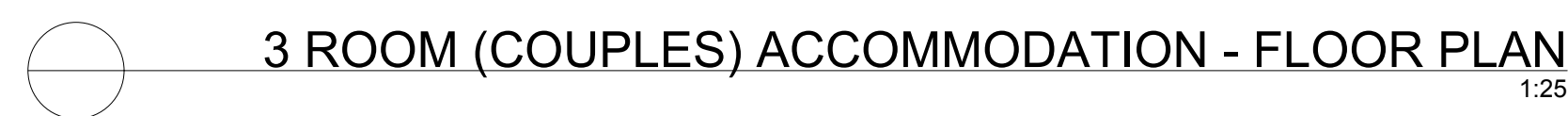
Aaron Rycroft
0408 750 105
a.rycroft@consultinganddesign.com.au



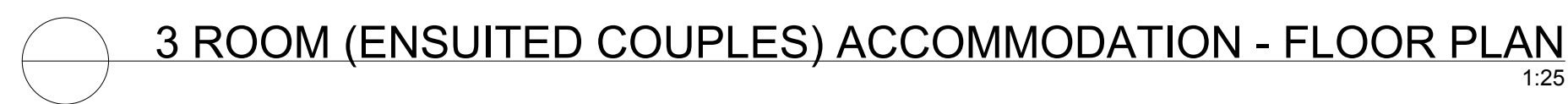
Project Management	
 cogplex your project, our expertise	
Designer	
 consultinganddesign.com.au	
ACCOMMODATION UNIT - 5 ROOM FLOOR PLAN	
DRAWING NUMBER	REVISION
00360-01-A001	B



<p>Project Management</p> <div style="display: flex; align-items: center;">  <div style="margin-left: 10px;"> <p>cogplex</p> <p><i>your project, our expertise</i></p> </div> </div>	
<p>Designer</p> <div style="display: flex; align-items: center; justify-content: center;">  </div> <p style="text-align: center; color: red;">consultinganddesign.com.au</p>	
<p>ACCOMMODATION UNIT - 4 ROOM (ENSUITED) FLOOR PLAN</p>	
<p>DRAWING NUMBER</p> <p>00360-02-A001</p>	<p>REVISION</p> <p>B</p>





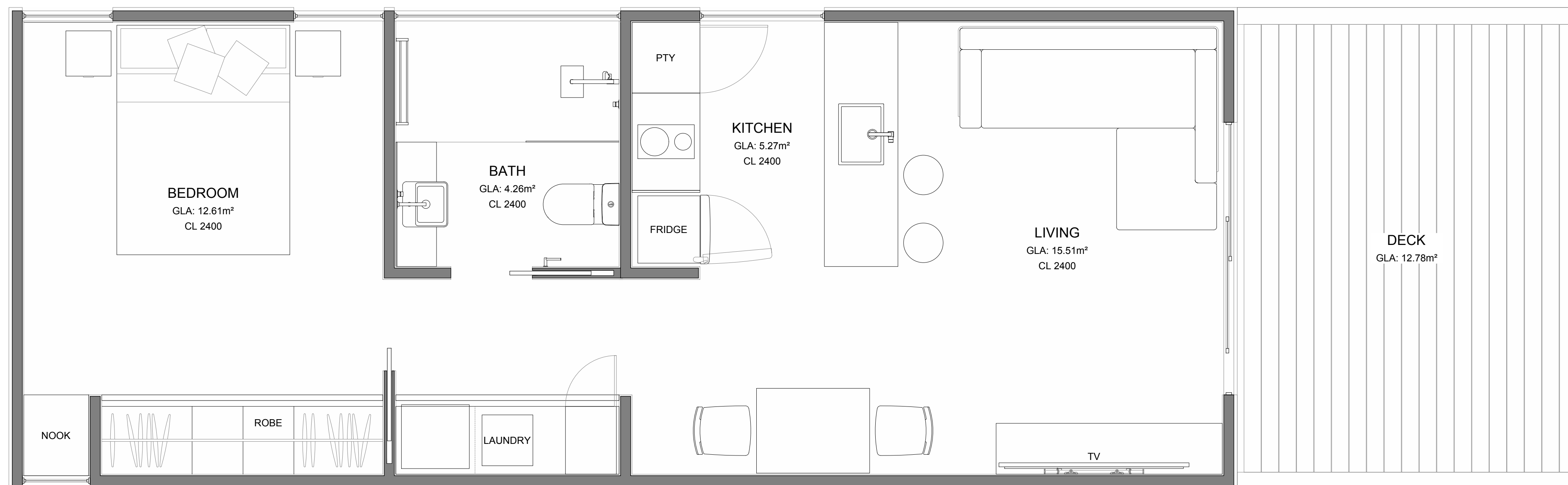
Project Management		 cogplex your project, our expertise	
Designer			
ACCOMMODATION UNIT - 3 ROOM (COUPLES) FLOOR PLAN			
DRAWING NUMBER		REVISION	
00306-03-A001		B	



Project Management		 cogplex your project, our expertise	
Designer		 consultinganddesign.com.au	
ACCOMMODATION UNIT - 3 ROOM (ENSUITED) FLOOR PLAN			
DRAWING NUMBER		REVISION	
00360-04-A001		B	



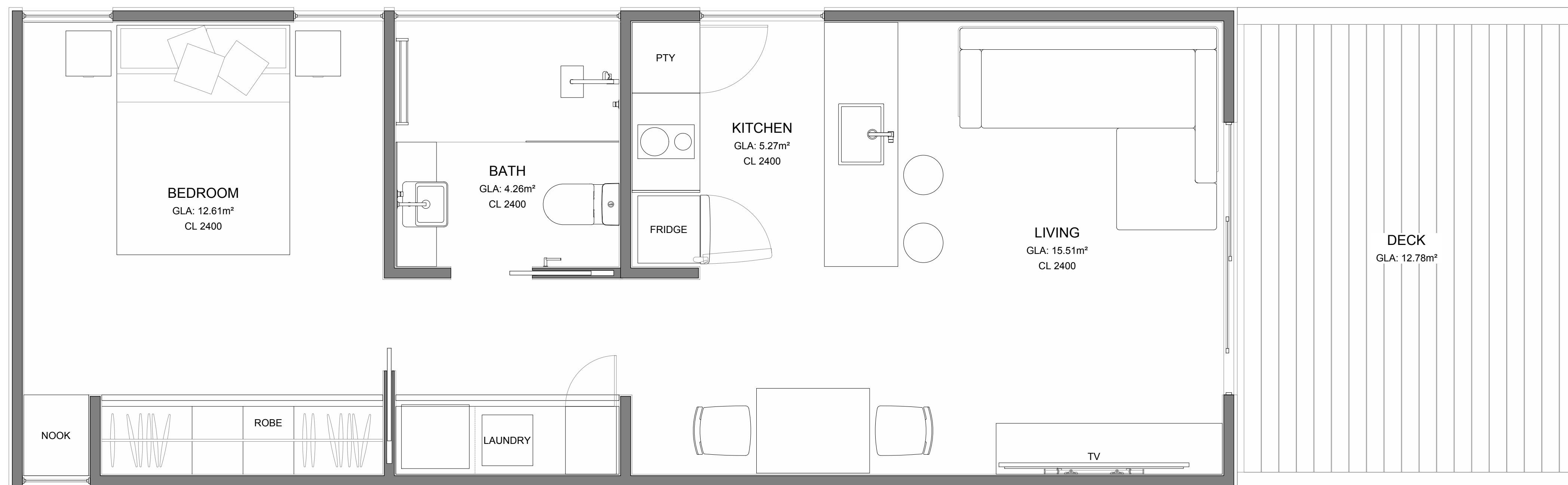
<p>Project Management</p> <div style="display: flex; align-items: center; justify-content: center;">  <div style="margin-left: 20px;"> <p>cogplex</p> <p><i>your project, our expertise</i></p> </div> </div>	
<p>Designer</p> <div style="display: flex; align-items: center; justify-content: center; margin-top: 50px;">  </div> <p style="text-align: center; color: red; margin-top: 10px;">consultinganddesign.com.au</p>	
<p>ACCOMMODATION UNIT - 2 ROOM UAT FLOOR PLAN</p> <p>DRAWING NUMBER</p>	
<p>00360-05-A001</p>	<p>REVISION</p> <p>B</p>



1 ROOM (FULLY SELF-CONTAINED) ACCOMMODATION - FLOOR PLAN

1:25

[illegible]



1 ROOM (FULLY SELF-CONTAINED) ACCOMMODATION - FLOOR PLAN

1:25

[illegible]

UNCONTROLLED WHEN PRINTED



Project Management		 cogplex your project, our expertise	
Designer		 consultinganddesign.com.au	
ACCOMMODATION UNIT - 2 BEDROOM (SC) FLOOR PLAN			
DRAWING NUMBER		REVISION	
00360-22-A001		B	